



HAL
open science

Electro-clinical correlation between seizures induced by direct electrical cortical stimulation and spontaneous seizures: relevance to define the epileptogenic zone

Nastasia Tardy

► **To cite this version:**

Nastasia Tardy. Electro-clinical correlation between seizures induced by direct electrical cortical stimulation and spontaneous seizures: relevance to define the epileptogenic zone. Human health and pathology. 2017. dumas-01826169

HAL Id: dumas-01826169

<https://dumas.ccsd.cnrs.fr/dumas-01826169v1>

Submitted on 29 Jun 2018

HAL is a multi-disciplinary open access archive for the deposit and dissemination of scientific research documents, whether they are published or not. The documents may come from teaching and research institutions in France or abroad, or from public or private research centers.

L'archive ouverte pluridisciplinaire **HAL**, est destinée au dépôt et à la diffusion de documents scientifiques de niveau recherche, publiés ou non, émanant des établissements d'enseignement et de recherche français ou étrangers, des laboratoires publics ou privés.



AVERTISSEMENT

Ce document est le fruit d'un long travail approuvé par le jury de soutenance et mis à disposition de l'ensemble de la communauté universitaire élargie.

Il n'a pas été réévalué depuis la date de soutenance.

Il est soumis à la propriété intellectuelle de l'auteur. Ceci implique une obligation de citation et de référencement lors de l'utilisation de ce document.

D'autre part, toute contrefaçon, plagiat, reproduction illicite encourt une poursuite pénale.

Contact au SID de Grenoble :
bump-theses@univ-grenoble-alpes.fr

LIENS

Code de la Propriété Intellectuelle. articles L 122. 4
Code de la Propriété Intellectuelle. articles L 335.2- L 335.10

<http://www.cfcopies.com/juridique/droit-auteur>

<http://www.culture.gouv.fr/culture/infos-pratiques/droits/protection.htm>

Année : 2017

Electro-clinical correlation between seizures induced by direct electrical cortical stimulation and spontaneous seizures: relevance to define the epileptogenic zone

THÈSE PRÉSENTÉE POUR L'OBTENTION DU TITRE DE DOCTEUR EN MÉDECINE

DIPLÔME D'ÉTAT

TARDY Nastasia

[Données à caractère personnel]

Thèse soutenue publiquement le 20 octobre 2017 à la Faculté de médecine de Grenoble, devant un jury composé de:

Monsieur de Professeur Philippe Kahane, Président du jury
Monsieur le Professeur Fabrice Bartolomei
Monsieur le Professeur Stéphane Chabardes
Monsieur le Professeur Olivier David
Monsieur le Professeur François Dubeau
Madame le Docteur Lorella Minotti, directrice de thèse

L'UFR de Médecine de Grenoble n'entend donner aucune approbation ni improbation aux opinions émises dans les thèses ; ces opinions sont considérées comme propres à leurs auteurs.

Remerciements à messieurs Fabrice Bartolomei, Stephan Chabardes, Olivier David et François Dubeau pour avoir accepté d'expertiser ce travail et d'en composer le jury.

Recevez toute ma gratitude.

J'exprime particulièrement ma sincère reconnaissance à Lorella Minotti et Philippe Kahane, qui m'ont encadrée chaleureusement tout au long de ce travail, et pendant mon cursus.

Doyen de la Faculté : Pr. Jean Paul ROMANET

Année 2017-2018

ENSEIGNANTS A L'UFR DE MEDECINE

CORPS	NOM-PRENOM	Discipline universitaire
PU-PH	ALBALADEJO Pierre	Anesthésiologie réanimation
PU-PH	APEL Florent	Ophthalmologie
PU-PH	ARVIEUX-BARTHELEMY Catherine	Chirurgie générale
PU-PH	BAILLET Athan	Rhumatologie
PU-PH	BARONE-ROCHETTE Gilles	Cardiologie
PU-PH	BAYAT Sam	Physiologie
PU-PH	BENHAMOU Pierre Yves	Endocrinologie, diabète et maladies métaboliques
PU-PH	BERGER François	Biologie cellulaire
MCU-PH	BIDART-COUTTON Marie	Biologie cellulaire
MCU-PH	BOISSET Sandrine	Agents infectieux
PU-PH	BONAZ Bruno	Gastro-entérologie, hépatologie, addictologie
PU-PH	BONNETERRE Vincent	Médecine et santé au travail
PU-PH	BOREL Anne-Laure	Endocrinologie, diabète et maladies métaboliques
PU-PH	BOSSON Jean-Luc	Biostatistiques, informatique médicale et technologies de communication
MCU-PH	BOTTARI Serge	Biologie cellulaire
PU-PH	BOUGEROL Thierry	Psychiatrie d'adultes
PU-PH	BOUILLET Laurence	Médecine interne
PU-PH	BOUZAT Pierre	Réanimation
MCU-PH	BRENIER-PINCHART Marie Pierre	Parasitologie et mycologie
PU-PH	BRICAULT Ivan	Radiologie et imagerie médicale
PU-PH	BRICHON Pierre-Yves	Chirurgie thoracique et cardio-vasculaire
MCU-PH	BRIOT Raphaël	Thérapeutique, médecine d'urgence
MCU-PH	BROUILLET Sophie	Biologie et médecine du développement et de la reproduction
PU-PH	CAHN Jean-Yves	Hématologie
PU-PH	CARPENTIER Françoise	Thérapeutique, médecine d'urgence
PU-PH	CARPENTIER Patrick	Chirurgie vasculaire, médecine vasculaire
PU-PH	CESBRON Jean-Yves	Immunologie
PU-PH	CHABARDES Stephan	Neurochirurgie
PU-PH	CHABRE Olivier	Endocrinologie, diabète et maladies métaboliques
PU-PH	CHAFFANJON Philippe	Anatomie
PU-PH	CHARLES Julie	Dermatologie
PU-PH	CHAVANON Olivier	Chirurgie thoracique et cardio-vasculaire
PU-PH	CHIQUET Christophe	Ophthalmologie

PU-PH	CHIRICA Mircea	Chirurgie générale
PU-PH	CINQUIN Philippe	Biostatistiques, informatique médicale et technologies de communication
MCU-PH	CLAVARINO Giovanna	Immunologie
PU-PH	COHEN Olivier	Biostatistiques, informatique médicale et technologies de communication
PU-PH	COURVOISIER Aurélien	Chirurgie infantile
PU-PH	COUTURIER Pascal	Gériatrie et biologie du vieillissement
PU-PH	CRACOWSKI Jean-Luc	Pharmacologie fondamentale, pharmacologie clinique
PU-PH	CURE Hervé	Oncologie
PU-PH	DEBILLON Thierry	Pédiatrie
PU-PH	DECAENS Thomas	Gastro-entérologie, Hépatologie
PU-PH	DEMATTEIS Maurice	Addictologie
MCU-PH	DERANSART Colin	Physiologie
PU-PH	DESCOTES Jean-Luc	Urologie
MCU-PH	DETANTE Olivier	Neurologie
MCU-PH	DIETERICH Klaus	Génétique et procréation
MCU-PH	DOUTRELEAU Stéphane	Physiologie
MCU-PH	DUMESTRE-PERARD Chantal	Immunologie
PU-PH	EPAULARD Olivier	Maladies Infectieuses et Tropicales
PU-PH	ESTEVE François	Biophysique et médecine nucléaire
MCU-PH	EYSSERIC Hélène	Médecine légale et droit de la santé
PU-PH	FAGRET Daniel	Biophysique et médecine nucléaire
PU-PH	FAUCHERON Jean-Luc	Chirurgie générale
MCU-PH	FAURE Julien	Biochimie et biologie moléculaire
PU-PH	FERRETTI Gilbert	Radiologie et imagerie médicale
PU-PH	FEUERSTEIN Claude	Physiologie
PU-PH	FONTAINE Éric	Nutrition
PU-PH	FRANCOIS Patrice	Epidémiologie, économie de la santé et prévention
MCU-MG	GABOREAU Yoann	Médecine Générale
PU-PH	GARBAN Frédéric	Hématologie, transfusion
PU-PH	GAUDIN Philippe	Rhumatologie
PU-PH	GAVAZZI Gaétan	Gériatrie et biologie du vieillissement
PU-PH	GAY Emmanuel	Neurochirurgie
MCU-PH	GILLOIS Pierre	Biostatistiques, informatique médicale et technologies de communication
MCU-PH	GRAND Sylvie	Radiologie et imagerie médicale
PU-PH	GRIFFEY Jacques	Chirurgie infantile
PU-PH	GUEBRE-EGZIABHER Fitsum	Néphrologie
MCU-PH	GUZUN Rita	Endocrinologie, diabétologie, nutrition, éducation thérapeutique
PU-PH	HAINAUT Pierre	Biochimie, biologie moléculaire
PU-PH	HENNEBICQ Sylviane	Génétique et procréation
PU-PH	HOFFMANN Pascale	Gynécologie obstétrique
PU-PH	HOMMEL Marc	Neurologie
PU-MG	IMBERT Patrick	Médecine Générale
PU-PH	JOUK Pierre-Simon	Génétique
PU-PH	JUVIN Robert	Rhumatologie

PU-PH	KAHANE Philippe	Physiologie
MCU-PH	KASTLER Adrian	Radiologie et imagerie médicale
PU-PH	KRACK Paul	Neurologie
PU-PH	KRAINIK Alexandre	Radiologie et imagerie médicale
PU-PH	LABARERE José	Epidémiologie ; Eco. de la Santé
MCU-PH	LABLANCHE Sandrine	Endocrinologie, diabète et maladies métaboliques
MCU-PH	LANDELLE Caroline	Bactériologie - virologie
MCU-PH	LAPORTE François	Biochimie et biologie moléculaire
MCU-PH	LARDY Bernard	Biochimie et biologie moléculaire
MCU-PH	LARRAT Sylvie	Bactériologie, virologie
MCU - PH	LE PISSART Audrey	Biochimie et biologie moléculaire
PU-PH	LECCIA Marie-Thérèse	Dermato-vénéréologie
PU-PH	LEROUX Dominique	Génétique
PU-PH	LEROY Vincent	Gastro-entérologie, hépatologie, addictologie
PU-PH	LEVY Patrick	Physiologie
PU-PH	LONG Jean-Alexandre	Urologie
PU-PH	MAGNE Jean-Luc	Chirurgie vasculaire
MCU-PH	MAIGNAN Maxime	Thérapeutique, médecine d'urgence
PU-PH	MAITRE Anne	Médecine et santé au travail
MCU-PH	MALLARET Marie-Reine	Epidémiologie, économie de la santé et prévention
MCU-PH	MARLU Raphaël	Hématologie, transfusion
MCU-PH	MAUBON Danièle	Parasitologie et mycologie
PU-PH	MAURIN Max	Bactériologie - virologie
MCU-PH	MC LEER Anne	Cytologie et histologie
PU-PH	MERLOZ Philippe	Chirurgie orthopédique et traumatologie
PU-PH	MORAND Patrice	Bactériologie - virologie
PU-PH	MOREAU-GAUDRY Alexandre	Biostatistiques, informatique médicale et technologies de communication
PU-PH	MORO Elena	Neurologie
PU-PH	MORO-SIBILOT Denis	Pneumologie
PU-PH	MOUSSEAU Mireille	Cancérologie
PU-PH	MOUTET François	Chirurgie plastique, reconstructrice et esthétique ; brûlologie
MCU-PH	PACLET Marie-Hélène	Biochimie et biologie moléculaire
PU-PH	PALOMBI Olivier	Anatomie
PU-PH	PARK Sophie	Hémato - transfusion
PU-PH	PASSAGGIA Jean-Guy	Anatomie
PU-PH	PAYEN DE LA GARANDERIE Jean-François	Anesthésiologie réanimation
MCU-PH	PAYSANT François	Médecine légale et droit de la santé
MCU-PH	PELLETIER Laurent	Biologie cellulaire
PU-PH	PELLOUX Hervé	Parasitologie et mycologie
PU-PH	PEPIN Jean-Louis	Physiologie
PU-PH	PERENNOU Dominique	Médecine physique et de réadaptation
PU-PH	PERNOD Gilles	Médecine vasculaire
PU-PH	PIOLAT Christian	Chirurgie infantile
PU-PH	PISON Christophe	Pneumologie

PU-PH	PLANTAZ Dominique	Pédiatrie
PU-PH	POIGNARD Pascal	Virologie
PU-PH	POLACK Benoît	Hématologie
PU-PH	POLOSAN Mircea	Psychiatrie d'adultes
PU-PH	PONS Jean-Claude	Gynécologie obstétrique
PU-PH	RAMBEAUD Jacques	Urologie
PU-PH	RAY Pierre	Biologie et médecine du développement et de la reproduction
PU-PH	REYT Émile	Oto-rhino-laryngologie
PU-PH	RIGHINI Christian	Oto-rhino-laryngologie
PU-PH	ROMANET Jean Paul	Ophthalmologie
PU-PH	ROSTAING Lionel	Néphrologie
MCU-PH	ROUSTIT Matthieu	Pharmacologie fondamentale, pharmaco clinique, addictologie
MCU-PH	ROUX-BUISSON Nathalie	Biochimie, toxicologie et pharmacologie
MCU-PH	RUBIO Amandine	Pédiatrie
PU-PH	SARAGAGLIA Dominique	Chirurgie orthopédique et traumatologie
MCU-PH	SATRE Véronique	Génétique
PU-PH	SAUDOU Frédéric	Biologie Cellulaire
PU-PH	SCHMERBER Sébastien	Oto-rhino-laryngologie
PU-PH	SCHWEBEL-CANALI Carole	Réanimation médicale
PU-PH	SCOLAN Virginie	Médecine légale et droit de la santé
MCU-PH	SEIGNEURIN Arnaud	Epidémiologie, économie de la santé et prévention
PU-PH	STAHL Jean-Paul	Maladies infectieuses, maladies tropicales
PU-PH	STANKE Françoise	Pharmacologie fondamentale
MCU-PH	STASIA Marie-José	Biochimie et biologie moléculaire
PU-PH	STURM Nathalie	Anatomie et cytologie pathologiques
PU-PH	TAMISIER Renaud	Physiologie
PU-PH	TERZI Nicolas	Réanimation
MCU-PH	TOFFART Anne-Claire	Pneumologie
PU-PH	TONETTI Jérôme	Chirurgie orthopédique et traumatologie
PU-PH	TOUSSAINT Bertrand	Biochimie et biologie moléculaire
PU-PH	VANZETTO Gérard	Cardiologie
PU-PH	VUILLEZ Jean-Philippe	Biophysique et médecine nucléaire
PU-PH	WEIL Georges	Epidémiologie, économie de la santé et prévention
PU-PH	ZAOUÏ Philippe	Néphrologie
PU-PH	ZARSKI Jean-Pierre	Gastro-entérologie, hépatologie, addictologie

PU-PH : Professeur des Universités et Praticiens Hospitaliers
MCU-PH : Maître de Conférences des Universités et Praticiens Hospitaliers
PU-MG : Professeur des Universités de Médecine Générale
MCU-MG : Maître de Conférences des Universités de Médecine Générale

Introduction

The primary aim of epilepsy surgery is to remove the epileptogenic zone (EZ), i.e. ‘the minimum amount of cortex that must be resected (inactivated or completely disconnected) to produce seizure freedom’ (**Rosenow and Lüders, 2001**). In this context, intracranial EEG (iEEG) can be performed when non-invasively obtained data remain insufficiently concordant, when they are discordant or inconclusive, or when they suggest an early involvement of highly eloquent areas (**Jayakar et al., 2016**). Such recordings aim not only at precisely identifying the cortical areas to be removed, but also at evaluating their functional integrity. This needs on the one hand the recording of spontaneous seizures, and on the other hand the use of cortical electrical stimulation (CES) to map eloquent cortical areas that will have to be spared during surgery.

Although the iEEG definition of the EZ mainly relies on the recording of spontaneous seizures (SS), some teams, mainly in France and Italy, routinely use CES during stereotactic iEEG (SEEG) recordings to aid in delineating the EZ, providing that the patient's typical electro-clinical pattern is produced (**Kahane et al., 2006; Trébuchon and Chauvel, 2016**). This approach, promoted by the Hospital Sainte Anne school (**Bancaud and Chauvel, 1986**), is considered as a necessary complement of SS recording, particularly when spontaneous ictal discharges are widely extended from the onset, when they apparently arise independently from different brain structures, or when regions that are initially silent at seizure onset abruptly activate in the course of the ictal discharge. The clinical utility of CES-induced seizures (CESS), however, remains controversial and most of north-american centers using subdural electrodes do not rely on such information because they consider and CES-induced afterdischarges and seizures as a by-product of cortical mapping that can disrupt the procedure (**Bank et al., 2014**), may inaccurately localize cortical functions (**Blume et al., 2004**), and do not show consistent colocalization between the stimulation site

and the SS onset area (**Blume et al., 2004**). This controversy is partly linked to the great variability in the methodologies used across centers, to the lack of a consensual definition of CESS, and to the differences in the conceptual approach to epilepsy surgery.

Surprisingly and despite decades of intra- and extraoperative CES procedures in epilepsy surgery candidates, only a few studies have investigated the relevance of CESS in clinical practice. In a recent review, 14 studies were identified during a 30 years period (1974-2004), of which 9 used SEEG electrodes, 3 intraoperative CES, and 2 subdural electrodes (**Kovac et al., 2016**). Overall, the percentage of patients in whom seizures could be elicited varied from 37 to 100%, with a large predominance of CES-elicited auras. The concordance rate between the electrodes exhibiting CESS and those overlying the site(s) of SS onset, evaluated in only 6 of these 14 studies, varied from 26% to 100%, with the best results obtained in patients with focal cortical dysplasia or suffering from temporal lobe epilepsy (**Bernier et al., 1990; Chassoux et al., 2000; Chauvel et al., 1993; Landré et al., 2004; Schulz et al., 1997; Wieser et al., 1979**). How the information obtained from CESS might influence seizure outcome was assessed in only one study, that did not show any differences according to whether CESS site(s) were included in the resection or not (**Schulz et al. 1997**). Based on these existing data, it thus appear that further studies are needed to better evaluate the clinical and iEEG overlap between SS and CESS, and to determine what is the precise added contribution of CESS over SS in terms of seizure outcome. The present retrospective study aimed at answering these issues in a series of 30 consecutive patients who underwent SEEG recordings at our institution. Whether general features might influence the information provided par CESS was also evaluated.

Patients and methods

Patients selection

Between October 2013 and November 2015, 32 patients suffering from drug-resistant focal seizures underwent a SEEG study at Grenoble-Alpes University Hospital as part of their presurgical evaluation. For the purpose of the study were selected the 30 patients in whom at least one complete spontaneous electro-clinical seizure was recorded during SEEG investigation.

Patients's characteristics

The 30 patients were all suffering from drug-resistant focal epilepsy, the operability of which could not be decided on the basis of non-invasive procedures only. These latter included in all cases high-resolution MRI, scalp-video-EEG monitoring, and neuropsychological tests. Some patients underwent also functional neuroimaging.

A summary of the patients' characteristics is given in Table 1. Briefly, there were 15 males and 15 females, whose mean age at SEEG investigation was 28 years (range 9-59 years). Mean age at seizure onset was 15 years (range 0.5-38 years), and mean duration of epilepsy was 14 years (range 3-40 years). MRI demonstrated different kind of lesions in 21 patients, of whom 6 had previously undergone unsuccessful resective surgery before SEEG procedure. MRI was negative in 9 cases.

Pt	Sex	Age at SEEG (years)	Epilepsy onset/duration (years)	MRI findings	Surgery	Number of SEEG electrodes	Histology	Outcome (Engel's class)	Follow-up (months)
1	M	41	4/37	R F FCD	R F (mesial)	13 L	FCD IIb	IA	16
2	F	11	8/3	N	RT (antero-mesial)	13 R/5 L	Heterotopic neurons	IB	15
3	M	48	38/10	R HS	No (bi-T)	9 R/7 L	NA	NA	NA
4	M	34	24/10	Bilateral PVNH	LT (antero-mesial)	4 R/10 L	Heterotopia	IA	3
5	M	28	25/3	R F tumor residue *	R F (mesial)	12 R	Oligodendroglioma	IA	3
6	M	28	12/16	L posterior PVNH	LT-P RFTC	13 L	NA	IVB	3
7	M	29	25/4	R F tumor residue *	R F (basal)	15 R	DNET	IA	9
8	M	12	6/6	L FCD	L F (mesial)	15 L	FCD IIb	IA	14
9	M	59	37/22	L F scar *	L F (basal)	12 L	Gliosis	IA	3
10	M	14	1/13	L F scar *	LT-Ins	14 L	MMCDOH	IVB	8
11	F	31	28/4	N	R F (basal)	15 R	FCD IIb	IA	3
12	F	47	7/40	N	No (bi-multifocal)	10 R/6 L	NA	NA	NA
13	F	23	4/19	L Patrophy	L F-P (mesial)	15 L	FCD Ia	IVB	2
14	F	15	12/3	LT polar blurring	LT (basal)	15 L	Gliosis	IIIA	12
15	F	31	24/7	N	LT (antero-mesial)	11 L	Heterotopia	IA	4
16	M	16	7/9	N	L Ins RFTC	7 L	NA	IID	28
17	F	15	7/8	RT polar blurring	RT-Ins-opercular	16 R	FCD IIIa	IVB	19
18	M	32	21/11	N	No (bi-T)	12 R/4 L	NA	NA	NA
19	F	33	14/19	L Ins-opercular scar	L Ins RFTC	17 L	NA	IIIA	29
20	F	13	10/3	R F FCD	R F (lateral)	16 R	FCD Ia	IA	19
21	M	26	10/16	L F scar *	L F (mesial)	4 R/12 L	Gliosis	IID	5
22	M	37	4/33	LT Scar *	L F (basal)	2 R/11 L	FCD Ia	IB	14
23	M	48	12/36	N	RT (antero-mesial)	15 R	FCD IIb	IA	24
24	F	20	12/8	HS	LT (antero-mesial)	5 R/10 L	FCD IIIa	IA	28
25	F	42	13/29	N	LT (antero-mesial)	3 R/10 L	HS	IA	19
26	F	24	10/14	Polymicrogyria	RT-C	14 R	FCD Ia	IVA	31
27	M	14	0.5/14	R-T-P cortical thickness	R-T-P (lateral)	15 R	FCD Ia	IVB	18
28	F	26	20/6	N	L F (mesial)	14 L	Gliosis	IA	28
29	F	45	42/3	N	LT (antero-mesial)	11 L	FCD IIIa	IA	38
30	F	9	7/2	N	L F (mesial)	16 L	FCD Ia	IA	3.2

Table 1: Patient's characteristics. Patients who experienced at least one CES-elicited electro-clinical seizure are highlighted in grey (n=24). Pt: patient number; M: male; F: female; N: normal; R: right; L: left; F: frontal; T: temporal; P: parietal; C: central; Ins: insular; O: occipital; DNET: dysembryoplastic neuroepithelial tumor; FCD: focal cortical dysplasia; HS: hippocampal sclerosis; MMCDOH: mild malformation of cortical development with oligodendroglial cells; PVNH: periventricular nodular heterotopia; RFTC: radiofrequency thermocoagulation; NA: not applicable; ¹ previously operated (#5: R F oligodendroglioma; #7: R F DNET; #8: L F cavernoma; #10: L F resection/disconnection (negative histology); #21: L F resection with negative MRI; #22: L T disconnection with negative MRI).

SEEG investigation

Twelve to 18 (mean: 14.3) multicontact semirigid intracerebral electrodes were implanted in each patient in stereotaxic conditions, according to the SEEG methodology developed in our group (**Kahane et al., 2004**). Electrodes placement and number was tailored in each individual depending on the suspected origin of seizures. Preoperative targeting was performed using 3-D T1 brain MRI computed with a stereotactic software (ROSA stereotactic assistance®), and using a stereotaxic and stereoscopic digitalized arteriography to determine avascular trajectories of the electrodes. Insertion of the electrodes (DIXI Medical, Besançon, France; diameter of 0,8 mm; 10 to 18 contacts, 2 mm length, 1.5 mm apart) was guided by a robotic arm (Medtronic O-Arm®) that was connected to the stereotactic frame and driven by the stereotactic software. Electrodes contacts were visualized directly on post-implantation MRI, and/or after a computer-assisted matching of post-implantation CT-scan with a pre-implantation 3D MRI.

SEEG recordings were conducted extra-operatively for about 2 weeks with reduced medication in 23 of the 30 patients, using an audio-video-EEG monitoring system (MicromedTreviso, Italy) that allowed to record simultaneously up to 128 contacts, with a sampling rate of 512 Hz and an acquisition band-pass filter between 0.1 and 200 Hz. Data were acquired using a referential montage, with a reference electrode chosen in the white matter. SEEG activity was displayed between contiguous contacts at different levels along the axis of each electrode, and interictal and ictal analysis of SEEG traces was done visually.

CES were performed for a few days during one to three hour sessions, according to our routine procedure (**Kahane et al., 1993**). The aim was to reproduce part or the totality of the ictal clinical symptomatology, and to localize functionally eloquent areas that had to be spared during surgery. Bipolar stimuli were delivered using a constant current rectangular pulse generator designed for a safe diagnostic stimulation of the human brain (Micromed, Teviso, Italy). Bipolar CES were performed at 1 Hz (pulse width: 1msec; ES duration: 40 sec)

and 50 Hz (pulse width: 0.5-1ms; ES duration: 5 sec), and applied between all contiguous contacts located in the cortex, with stepwise increasing intensities up to 5 mA and until clinical responses, after-discharges or seizures were obtained.

Following SEEG results, 17 patients had a left-sided, 10 a right-sided, and 3 a bilateral focal epilepsy (Table 1). The epilepsy was unilobar in 21 cases (frontal: 11, temporal: 8, insular: 2), multilobar in 6 (temporo-parietal: 2, temporo-central: 1, temporo-insular: 1, temporo-insulo-opercular: 1, fronto-parietal: 1), bitemporal in 2, and bilateral multifocal in 1.

Surgery

Surgery, including radiofrequency thermocoagulation (RFTC), was performed in all but 3 cases, according to SEEG results (Table 1). The extent of the resection/RFTC was assessed on a 3-D T1 post-operative MRI usually performed 3 months after surgery. After a mean post-operative follow-up of 15 months (range: 2-38 months), 17 patients (63%) were in class I according to Engel's classification, 2 in class II (7.4%), 2 in class III (7.4%), and 6 in class IV (22.2%). Pathological examination, available in all the 24 resective cases, found different kind of lesions in 13 of the 16 patients whose MRI proved positive, and in 7 of the 8 patients without any abnormality on MRI.

Data analysis

Spontaneous seizures

All SEEG-recorded SS were reviewed, but neither subclinical seizures, nor seizures in which auras occurred without any SEEG modification were kept for analysis.

The EZ was defined according to its electrophysiological definition, i.e. the “site of the beginning and of the primary organization of the epileptic seizures” (**Munari and Bancaud, 1987**). The EZ therefore included the seizure onset zone (the region exhibiting the first SEEG change that occurred prior to, or concomitant with, the clinical onset of the seizure) as well as

the region of early seizure spread (that was arbitrarily defined as the region involved by the SEEG discharge within the first 20 seconds following the ictal onset). SEEG changes at seizure onset were classified, whatever possible, according to the seizure-onset patterns proposed by **Perucca et al. (2014)**.

The anatomical extent of the EZ was evaluated in each patient by the number of electrode contacts involved during the first 20 seconds of the SS. If different seizure patterns were recorded, all the contacts involved within the first 20 seconds, whatever the seizures, were included in the EZ.

Seizure semiology was analyzed according to a working definition of clinical phenomena derived from the classification of **Lüders et al. (1998)**. Briefly, a total number of 6 core clinical signs were systematically evaluated, including aura, autonomic signs, loss of contact, simple motor signs, complex motor signs and negative phenomena. They were quoted as present or absent in each SS, and they were then compiled in a single list for all SS.

CES-elicited seizures

Only CES-induced electro-clinical seizures were analysed, and neither elicited isolated aura (without SEEG discharge), nor isolated after-discharges (without clinical accompaniment), were considered in the present work.

CESS thus referred to electro-clinical events that occurred as an immediate result of CES, and in which both clinical signs and SEEG discharge outlasted the electrical stimulus. They were considered as habitual (non habitual) when elicited clinical manifestations were (were not) recognized by the patient and/or his/her relatives.

The parameters used to elicit CESS were first evaluated. Then, the CESS onset patterns, anatomical extent of the elicited discharges, and CESS semiology were assessed using the same criteria than those used for SS analysis. Whether the CES location within or outside the EZ might influence the rate of CESS was also evaluated.

Comparison between SS and CESS

A rate of electrical concordance was calculated for each patient by comparing the extent of the EZ with the mean extent of all elicited discharges. Similarly, a rate of clinical concordance was evaluated in each patient by comparing the mean number of clinical signs observed during CESS with the list of SS clinical signs.

Still, whether other factors might influence the rate of electrical and/or clinical concordance was assessed. These factors included the age at seizure onset, epilepsy duration, MRI findings (negative versus positive), and epilepsy type (temporal versus extra-temporal).

CESS and outcome

All the post-operative MRI were reviewed to evaluate, for each patient, the percentage of CESS contacts that were located in the resective (or thermo-coagulated) area. This percentage was then compared with post-operative seizure outcome.

Other potential prognosis factors were also evaluated, including the number of CESS, the percentage of contacts that elicited CESS within the EZ, the SEEG LVFA pattern at CESS onset, and the rates of electrical/clinical concordance.

Statistics

We used Fisher's exact test for categorical data, and Mann-Whitney's U test or Spearman's correlation for continuous data. Significance was set at $p \leq 0.05$.

Results

Twenty four of the 30 patients (80%) exhibited at least one CESS. Their general characteristics did not seem to differ from the ones of the 6 patients who did not present any CESS (Table 1). None of these later, however, were suffering from temporal lobe epilepsy (TLE), as compared with 10 of the 24 patients with CESS.

The following sections will refer only to these 24 patients, who exhibited both SS and CESS.

Pt	N° of SS	N° of contacts involved in the EZ	N° of CESS (CS)	N° of CESS elicited by CES of the EZ (CS)	Mean N° of contacts involved during CESS (CS)	Mean N° of CESS contacts located in the EZ (CS)	Percentage of electrical correlation between SS and CESS (CS)	Percentage of clinical correlation between SS and CESS (CS)	N° of contacts eliciting CESS		Engel's class
									All	Resected	
1	2	17	2 (1)	2 (1)	8 (7)	8 (7)	100 (100)	75 (75)	2	1 (50%)	IA
2	3	8	7 (1)	3 (0)	6 (8)	3.6 (7)	59.5 (70)	88.9 (60)	7	3 (43%)	IB
3	3	25	2 (2)	2 (2)	15 (15)	10 (10)	66.7 (66.7)	100 (100)	2	no surgery	na
4	5	30	8 (0)	7 (-)	11 (-)	7.4 (-)	67 (-)	100 (-)	8	8 (100%)	IA
5	3	6	2 (1)	1 (0)	4 (5)	3.5 (4)	87.5 (80)	100 (100)	2	1 (50%)	IA
6	3	34	1 (1)	0 (0)	13 (13)	11 (11)	84.6 (84.6)	100 (100)	1	1 (100%)	IVB
7	2	6	1 (1)	0 (0)	10 (10)	3 (3)	30 (30)	100 (100)	2	0 (0%)	IA
8	12	27	13 (2)	11 (1)	10.8 (26.5)	10.6 (26.5)	98.6 (100)	25 (25)	10	4 (40%)	IA
11	18	47	1 (1)	1 (1)	21 (21)	21 (21)	100 (100)	100 (100)	1	1 (100%)	IA
12	4	37	1 (0)	0 (-)	12 (-)	7 (-)	58.3 (-)	33 (-)	1	no surgery	na
13	193	34	2 (2)	0 (0)	12 (12)	11 (11)	91.7 (91.7)	100 (100)	2	0 (0%)	IVB
14	70	19	12 (0)	9 (-)	6.2 (-)	3.4 (-)	55.4 (-)	92.3 (-)	10	2 (20%)	IIIA
15	14	18	5 (2)	4 (2)	9 (9)	4.6 (6)	51.1 (66.7)	100 (100)	4	2 (50%)	IA
16	1	18	7 (0)	7 (-)	12.6 (-)	10 (-)	79.5 (-)	100 (-)	7	3 (43%)	IID
18	17	46	4 (1)	3 (0)	18.2 (48)	13 (34)	71.2 (70.8)	85.7 (100)	3	no surgery	na
19	2	15	3 (2)	0 (0)	16.3 (17.5)	6.3 (6.5)	38.8 (37.1)	- *	4	2 (50%)	IIIA
20	9	47	1 (0)	1 (-)	4 (-)	4 (-)	100 (-)	100 (-)	1	0 (0%)	IA
23	12	14	4 (1)	3 (1)	14.5 (10)	10 (10)	67.7 (100)	100 (100)	4	2 (50%)	IA
24	13	15	6 (0)	4 (-)	13.8 (-)	8.8 (-)	63.8 (-)	100 (-)	6	3 (50%)	IA
25	20	74	1 (1)	1 (1)	48 (48)	48 (48)	100 (100)	66.7 (66.7)	1	1 (100%)	IA
26	2	12	1 (0)	0 (-)	11 (-)	0 (-)	0 (-)	0 (-)	10	2 (20%)	IVA
27	13	54	1 (0)	1 (-)	2 (-)	2 (-)	100 (-)	100 (-)	7	1 (14%)	IVB
28	11	72	4 (1)	4 (1)	15.7 (20)	15.7 (20)	100 (100)	83.3 (100)	4	2 (50%)	IA
29	1	23	10 (3)	5 (3)	3.2 (62.3)	1.2 (20)	37.3 (32.1)	100 (100)	10	6 (60%)	IA

Table 2: Comparison between stimulation-induced and spontaneous electro-clinical seizures. Patients who experienced at least one complete CES-elicited electro-clinical seizure are highlighted in grey (n=16). Pt: patient; SS: spontaneous seizures; EZ: epileptogenic zone; CESS: electro-clinical seizures elicited by CES (cortical electrical stimulation); CS: complete electro-clinical seizures elicited by CES; * no video material available; na: not applicable.

Spontaneous seizures (SS) (Tables 1 and 2)

A total number of 402 SS (mean: 16.7/patient; range: 1-193) was recorded in the 24 patients. Six to 74 contacts per patient were part of the EZ (mean: 29), which was temporal in 10 patients (mesial: 7, temporo-basal: 1, bitemporal: 2), frontal in 7 patients (mesial: 4, fronto-basal: 2, lateral: 1), insular in 2 patients, and multilobar or multifocal in 5 patients.

Most SS started with a low-voltage fast activity (LVFA, n=270, 67%) (Figure 1a). The other seizure onset patterns included a fast discharge or spikes or polyspikes (FDS, n=68, 17%), a mixture of LVFA and FDS, (n=50, 12%), a rhythmic spikes or spike-and-waves discharge (RSD, n=13, 3%), and a rhythmic alpha-theta sharp activity (RSA, n=1, <1%).

CES-elicited electro-clinical seizures (CESS) (Tables 1, 2 and 3)

A total number of 99 electro-clinical seizures (mean: 4.1/patient; range: 1-14) were elicited by CES in the 24 patients, of which 76 (in 22 patients, mean: 3.4/patient) were clinically characterized by auras (77%), and 23 (in 16 patients, mean: 1.4/patient) by complete seizures (CS, 23%). CES-elicited aura was the main seizure type in TLE (48/59), insular epilepsy (ILE, 8/10), and frontal epilepsy (FLE, 17/24), but not multilobar/multifocal epilepsy (MLE, 3/6) epilepsy.

Five of the 76 auras (in 5 patients) and 4 of the 23 CS (in 4 patients) were reported by the patients as non habitual seizures (NHS). (Figure 2b) All but one were observed in TLE cases, while the remaining one occurred in an ILE case. Six of the 9 NHS, however, were considered by the observers as quite similar to the SS recorded during the video-(S)EEG monitoring. Thus, only 3 of 99 CESS (3%) raised the issue of 'false positive' electro-clinical events; they were elicited in 2 patients with TLE (#24, #25) and in one patient with ILE (#19). CESS were more frequently induced using 50Hz CES (n=77, 77.8%) than using 1Hz CES (n=22, 22.2%), but the difference did not reach statistical significance (p=0.27, Fisher's exact test). Also, the intensity used to elicit CESS was lower with 50Hz than with 1Hz stimulation, without any significant association (p=1, Fisher's exact test). 50Hz CES induced more

commonly CS (20/77, 26%) than 1Hz CES did (3/22, 13.6%), but they were also more prone to elicit NHS (8/9 NHS after 50 Hz CES versus 1/9 after 1 Hz CES, $p=0.68$, Fisher's exact test).

In comparison with SS, the elicited discharges started more frequently with a FDS ($n=78$, 65%) than with a LVFA ($n=13$, 16%) (Figure 1bc). The other ictal patterns included LVFA+FDS ($n=5$, 14%), and RSA (1, 1%). Elicited RSD was never observed.

Sixty nine of the 99 CESS (70%), and 13 of the 23 CS (13/23, 56.5%), were elicited by a contact located within the EZ.

	Pts	CESS	Epilepsy type				1Hz CES		50Hz CES	
	n°	n°	TLE (Pts)	FLE (Pts)	ILE (Pts)	MLE (Pts)	n°	intensity (mA)	n°	intensity (mA)
All	24	99	59 (10)	24 (7)	10 (2)	6 (5)	22	2.9 (1-5)	77	2.2 (0.4-5)
Aura	22	76	48 (10)	17 (7)	8 (2)	3 (3)	19	2.9 (1-5)	57	2.2 (0.4-5)
CS	16	23	11 (8)	7 (5)	2 (1)	3 (2)	3	3.0 (3-3)	20	2.3 (1-5)
NHS *	8	9	8 (7) **	0	1 (1) ***	0	1	3	8	2.4 (2-3)

Table 3: General characteristics of stimulation-induced electro-clinical seizures. Pts: patients; n°: number; CES: cortical electrical stimulation; CESS: electro-clinical seizure elicited by CES; : aura: electro-clinical aura elicited by CES; CS: complete electro-clinical seizure elicited by CES; NHS: non habitual electro-clinical seizure elicited by CES; * 5 (in 5 pts) were part of auras, and 4 (in 4 pts) were part of CS; ** 5 (in 5 pts) were part of auras, and 3 (in 3 pts) were part of CS; *** this event was part of CS; TLE: temporal lobe epilepsy; FLE: frontal lobe epilepsy; ILE: insular lobe epilepsy; MLE: multilobar/multifocal epilepsy.

Electro-clinical comparison between SS and CESS (Tables 2 and 3)

SEEG findings were available in all the 24 patients. Overall, 1312 contacts were involved within the first 20 seconds of all the CESS (mean number/patient: 3.2-48), of which 854 (70.4%) (mean number/patient: 0-48) overlapped with the EZ. The rate of electrical concordance varied from 0 to 100% per patient, with an average of 77.4%. This concordance

rate was even better when considering only the CS, with a mean of 86.7% per patient (30-100%) (Figure 1abc).

Seizure semiology was available in all but one patients, in whom the video material of the unique seizure recorded could not be visualized (#19). For the remaining 23 patients, 126 (85.1%) of the 148 clinical signs identified during CESS (1-21/patient) were concordant with those identified during SS. As for electrical findings, the rate of clinical concordance was higher for CS (n=15 patients, mean: 95.3%, range: 25-100%) than for the whole group of CESS (mean: 85.1%, range: 0-100%).

No statistically significant association was found between the rates of electrical/clinical concordance and (i) the age at seizure onset ($p=0.14/0.09$, Spearman's correlation), (ii) epilepsy duration ($p=0.44/0.33$, Spearman's correlation), (iii) MRI findings ($p=0.67/0.33$, Mann-Whitney's U test), and (iv) epilepsy type ($p=0.15/0.67$, Mann-Whitney's U test).

CESS and seizure outcome

Overall, the percentage of contacts that elicited seizures and which were located in the resective (or thermo-coagulated) area varied from 0% to 100% per patient (mean: 43.7%) for all CESS, and from 0% to 100% (mean: 48%) for CS only. These percentages did not significantly correlated with the post-operative seizure outcome (respectively $p=0.24$ and $p=0.74$, Mann-Whitney's U test).

Otherwise, no statistically significant association was found between seizure outcome and (i) the number of CESS ($p=0.26$, Mann-Whitney's U test), (ii) the percentage of contacts that elicited CESS within the EZ ($p=0.24$, Mann-Whitney's U test), (iii) the SEEG pattern of LVFA at CESS onset ($p=1$, Fisher's exact test), and (iv) the rates of electrical/clinical concordance ($p=0.96/0.45$, Mann-Whitney's U test).

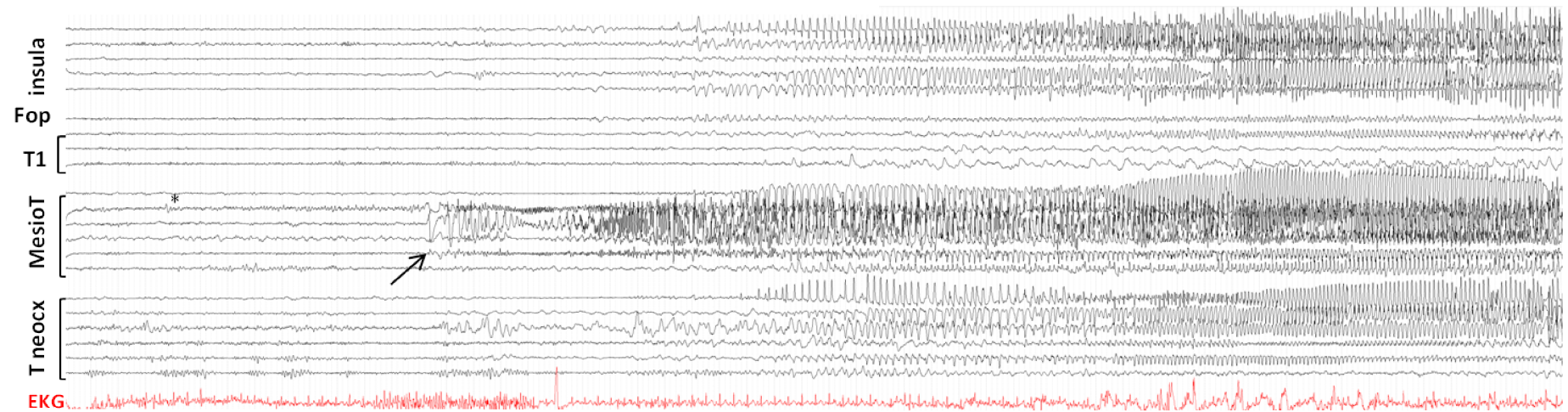


Figure 1a. Spontaneous seizure (patient 29). Low voltage fast activity (LVFA) involving first the amygdala (*), followed by a mixture of LVFA with a fast discharge of spikes within mesial temporal structures 12 seconds later (arrow). The discharge then propagate to the insula and temporal neocortex. Fop: frontal operculum; STG: superior temporal gyrus; MesioT: mesio-temporal structures; T neocortex: temporal neocortex. EKG: electrocardiogram.



Figure 1b. 1Hz-stimulated seizure, anterior hippocampus, 3mA (same patient as in Figure 1a). The spatial distribution and shape of the elicited discharge is similar to the spontaneous one. Clinical semiology is the same. Fop: frontal operculum; STG: superior temporal gyrus; MesioT: mesio-temporal structures; T neocortex: temporal neocortex. EKG: electrocardiogram.

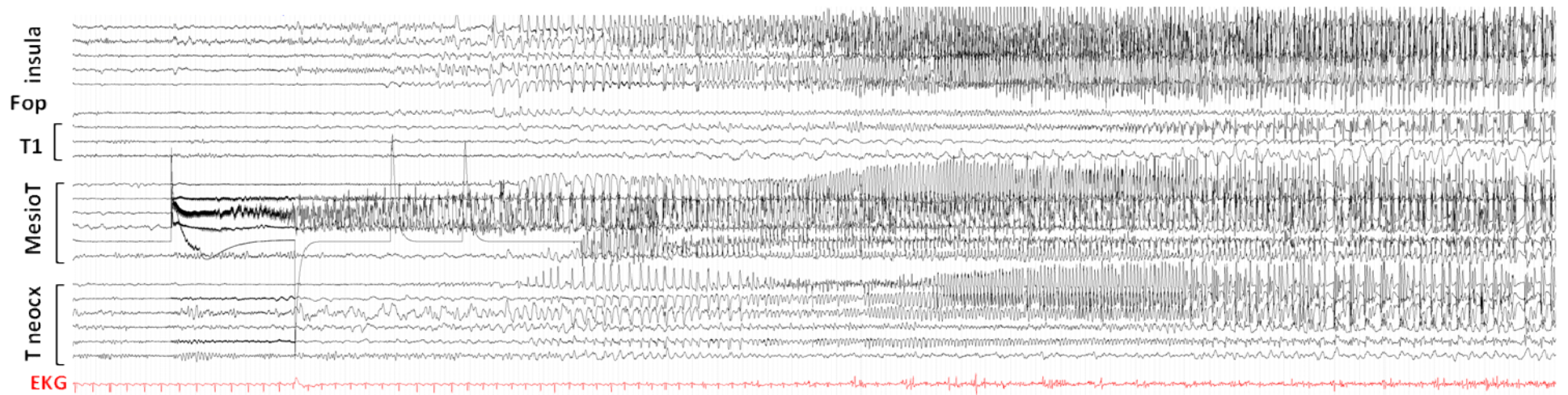


Figure 1c. 50Hz-stimulated seizure, entorhinal cortex, 2mA (same patient as in Figure 1ab). As compared with the spontaneous seizure (Fig.1a), the initial part of the elicited seizure is obscured by artefacts, the SEEG pattern consists from the onset in a fast discharge of spikes, and seizure spread faster, therefore explaining some clinical discrepancies (loss of contact from the onset and amnesia of the episode).



Figure 1d: 50Hz-stimulated seizure, temporal pole, 2mA: the patient referred a chest warmth recognized as a part of her habitual seizure. The afterdischarge involves the mesial temporal structures, the anterior insula and the temporal neocortex with different electrical patterns than the spontaneous one, more tonic on the temporal pole (arrow).

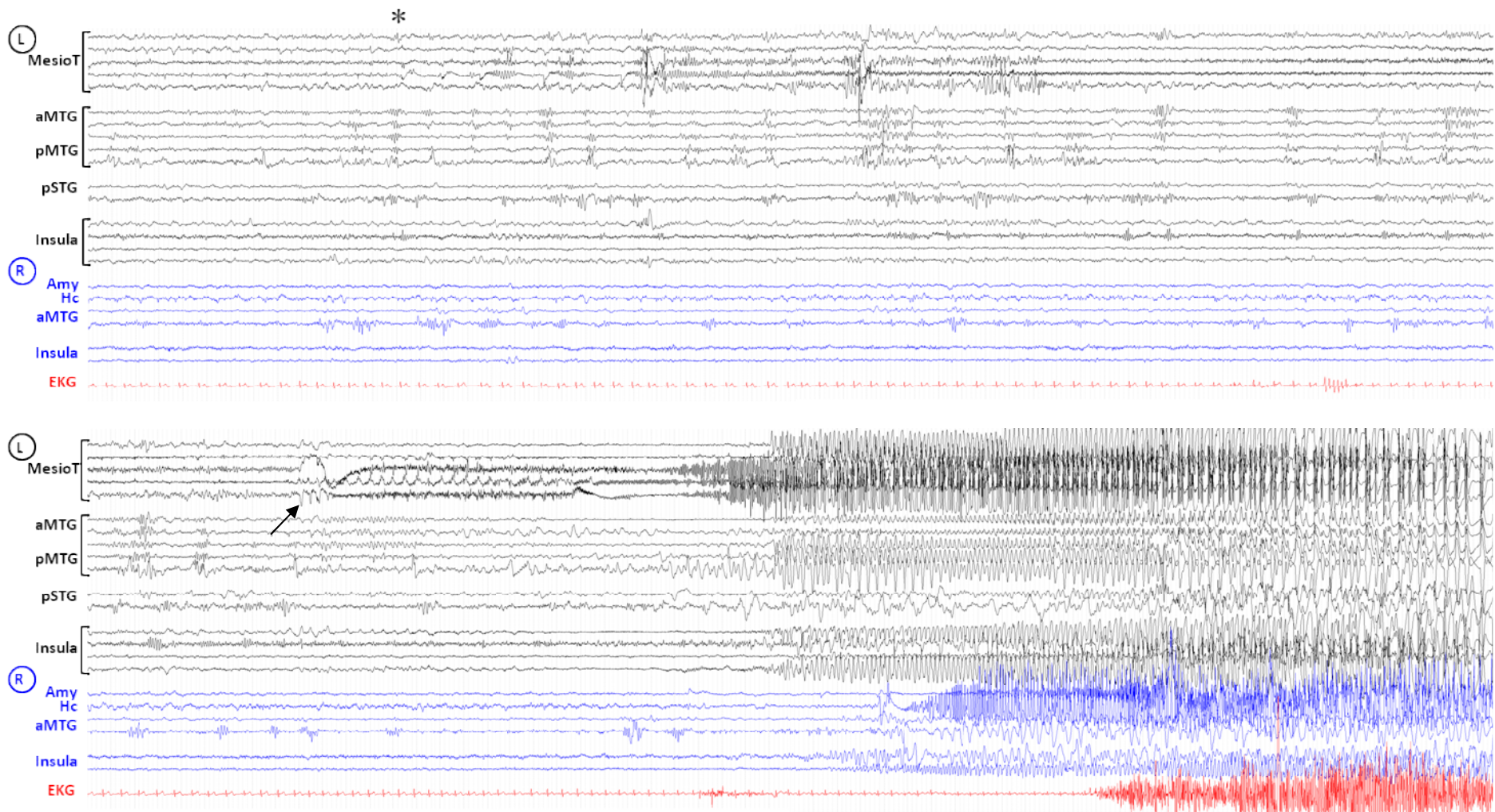


Figure 2a: spontaneous seizure: the discharge involves first (*) the left mesial temporal structures (mesioT), becoming more tonic and spreading (arrow) 54 seconds after the onset, to the left insular cortex, the left temporal neocortex (aMTG, pMTG, PSTG) and to the right mesial temporal structures (amygdala and hippocampus) and the right insula. L: left. R/right. MesioT: mesial temporal structures. aMTG: anterior middle temporal gyrus. pMTG: posterior middle temporal gyrus. pSTG : posterior first temporal gyrus. Amy: amygdala. Hc: hippocampus. EKG: electrocardiogram.

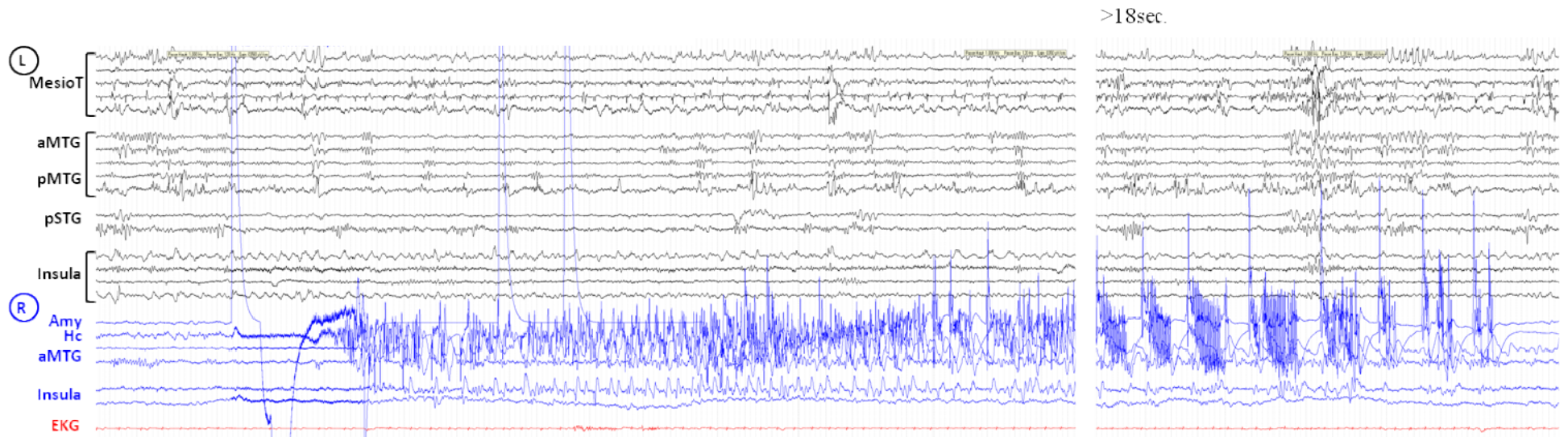


Figure 2b: right amygdala 50Hz stimulation : the afterdischarge involves the right amygdala and the right hippocampus and in a lesser extent the right insula, as in the second part of the spontaneous seizure.

Discussion

Since the pioneering works of Penfield and Jasper (**Penfield and Jasper, 1954**), CES has appeared as a powerful technique to study network mechanisms in epilepsy, including functional mapping of brain functions, estimation of functional connectivity, assessment of cortical excitability, and elicitation of seizures (**David et al., 2010**). This later aspect, however, has been poorly investigated (**Kovac et al., 2016**) and the main purposes of the present work were to evaluate how CESS and SS overlapped, both electrically and clinically, and whether the information obtained from CESS might help for the surgical decision. To this aim, attention was focused on electro-clinical events in order to rule out all the ambiguities raised by the elicitation of isolated auras (i.e., auras that are generated during the stimulation without concomitant nor further iEEG change), or by the induction of isolated afterdischarges (i.e., asymptomatic discharges of spikes, polyspikes or sharp waves that are directly related to and outlast CES, without evolving in frequency and spatial location).

CESS is not a rare phenomenon

In a recent review, the rate of CESS was shown to vary from 37 to 100%, depending on the type of CES procedure, on the criteria used to define CESS, and on the studied population (**Kovac et al., 2016**). Our study, conducted in an heterogenous population of consecutive patients, confirms that CESS resembling to SS (i.e., electro-clinical CESS) can be found in a vast majority of patients submitted to SEEG recordings (24/30 patients, 80%), a rate which is close to the overall rate of CESS (343/449 patients, 76%) found in other studies conducted by means of intracerebral electrodes (**Bernier et al., 1990; Chassoux et al., 2000; Chauvel et al., 1993; Halgren et al. 1978; Kahane et al., 1993; Landré et al., 2004; Munari et al., 1993; Wieser et al., 1979**). By comparison, the overall rate of CESS observed intraoperatively (**Salanova et al., 1992; Salanova et al., 1995a,b**) or using subdural electrodes (**De Salles et al., 1994; Schulz et al., 1997**) has been shown to be much lower

(65/173, 38%), a finding that might be related to the use of electrodes that penetrate the cortex rather than overlay it, as well as to the use of bipolar CES which delivers more localized current flows than unipolar CES does (**Nathan et al., 1993**).

As shown by others (**Landré et al., 2004**), our study also found that the temporal lobe was more sensitive than the frontal lobe for eliciting CESS, since all of the 10 stimulated TLE patients (of whom 8 were suffering from mesio-TLE) exhibited CESS, as compared with 7 of the 10 patients with FLE (see Table 1). Additionally, CES of the insular lobe resulted in CESS in the 2 patients stimulated so far. Limbic structures therefore appear as particularly responsive to CES, which may in turn lead more frequently to NHS, as suggested by our results (all the NHS were elicited either in TLE or ILE patients).

Previous studies have shown that a large percentage of CESS clinically resulted in auras, that could be associated or not with iEEG changes (**Halgren et al., 1978; Kahane et al., 1993; Salanova et al., 1992; Salanova et al., 1995a,b; Schulz et al., 1997**). Most were elicited from the temporal lobe (**Halgren et al., 1978; Kahane et al., 1993**) or from the posterior cortex (**Salanova et al., 1992; Salanova et al., 1995a,b**). CS were less frequent and were observed in any locations, in particular when stimulating the frontal lobe (**Bancaud et al., 1974**). Using more strict criteria for defining CESS, we also found a large predominance of auras (77%) as compared with CS (23%). This over-representation of auras was found in all forms of epilepsies, except in MLE.

Whereas literature has shown that most CESS were elicited using high frequency (50-60Hz) CES, a few studies have reported the interest to use low frequency (1Hz) stimulation to elicit seizures (**Chassoux et al., 2000; Chauvel et al., 1993; Kahane et al., 1993; Landré et al., 2004; Munari et al., 1993**). 1Hz CES, indeed, allows a better visualization of the SEEG recording at the onset of the induced discharge and during the stimulation itself (see Figure 1b), though with a more uncertain effectiveness (**Kahane et al., 1993; Munari et al., 1993**). Our results confirm that 50Hz CES was more prone than 1Hz CES to elicit CESS (78%

versus 22%), especially for CS. However, 50Hz CES also accounted of most NHS (89%), which could thus limit its utility.

Are CES-induced seizures similar to the spontaneous ones?

A few studies have tried to evaluate the electrical and/or clinical similarities between CESS and SS, with an estimation of the concordance rate that varied between 26% and 100% (**Bernier et al. 1990, Chassoux et al., 2000; Chauvel et al., 1993; Landré et al., 2004; Schultz et al., 1997; Wieser et al., 1979**). Data analysis, however, face with many difficulties such as the lack of information on the number of stimulated electrodes (**Bernier et al., 1990; Chassoux et al., 2000; Chauvel et al., 1993; Landré et al., 2004; Wieser et al., 1979**), CES parameters (**Wieser et al., 1979**), type of epilepsy (**Bernier et al., 1990**), iEEG changes (**Schulz et al., 1997**), and type (auras versus complete seizures) of CESS (**Bernier et al., 1990; Chassoux et al., 2000; Chauvel et al., 1993; Landré et al., 2004; Wieser et al., 1979**). Still, some studies evaluated the concordance rate only in terms of seizure laterality (**Wieser et al., 1979**), or in specific situations such as focal cortical dysplasias (**Chassoux et al., 2000**).

Our study, despite some limitations, compared carefully both electrical and clinical correlates of SS and CESS. It showed that a strong electrical (77.4%) and clinical (85.1%) concordance with SS did exist for the whole group of CESS, that was even better (86.7% and 95.3%, respectively) after having excluded the elicited auras which were likely to activate only part of the EZ. This high rate of electro-clinical concordance, which was neither influenced by the age at seizure onset, duration of epilepsy, MRI data, and epilepsy type, therefore suggests that CES can reactivate accurately the cortical areas involved in spontaneous ictogenesis, and thus could be reliable enough to define the EZ. This assumption, however, must be softened based on the following elements: i) we chose arbitrarily the first 20 seconds of SEEG discharges to account for the extent of the EZ, which prevented us to analyse the whole seizures evolution;

we thus have possibly missed some late discordances between SS and CESS, or late activations of initially silent areas that were more relevant than those occurring as the immediate result of CES (Figure 2a,b) ii) As compared with SS, which started more frequently with a LVFA (i.e., the most common iEEG seizure onset pattern, see **Singh et al., 2015**), CESS started more frequently with a FSD, even when they involved the same anatomical sites (Figure 1c,d); the way neural synchronization is produced could be therefore different in SS and CESS, although providing similar information about the spatial organisation of the EZ; iii) 30% of CESS and 43.5% of CS were elicited from a cortical region located outside the EZ, which can limit the utility of CESS for defining the extent of the resection; worse results were found by **Jacobs et al. (2010)**: they found a maximum of 34% of stimulated contacts inducing an ictal response and located in the SOZ. On the other hand, interpretation may be less straightforward, and analysis of CESS must take into account the way the ictal discharge is generated, both spatially and temporally, rather than to simply consider that the seizure onset zone lies where the seizure is produced (**Trébuchon and Chauvel, 2016**); iv) 9/99 CESS were reported by the patients as non habitual, of which only 3 definitely showed unusual electro-clinical patterns after having reviewed the previously recorded episodes; the rate of such 'false positive' seizures therefore remains low (3%), but clinicians should be aware that such episodes do exist, especially in mesio-temporal lobe structures and when applying 50Hz CES; whether they are only a by-product of CES, or whether they need an abnormal underlying hyperexcitable cortex to be elicited remains debatable.

Can CES-elicited seizures contribute in improving surgical outcome ?

Despite a strong electro-clinical concordance between CESS and SS, the resections that included CESS-eliciting sites did not lead to any superior outcome, compared to resections that did not include these sites, as already showed in another study (**Schulz et al. 1997**).

CESS-eliciting sites, however, were fully resected in only a few patients of our series (4/24), so that the prognostic significance of removing CESS-eliciting sites cannot be definitely ruled out.

30 % of CESS and 43.5% of the CS were induced by a stimulation performed outside of the epileptogenic zone. This finding probably reflects the existence of cortical regions more extended than the considered epileptogenic zone which could participate in the seizure production. The limits of this region and the consequences of its resection on the post surgical prognostic were not evaluated. However, its lack of consideration could explain the recurrence of seizures after a transient post operative seizure-free period.

Finally, no association was found between the electroclinical correlations and the post operative outcome (neither electrical $p=0.96$ – nor clinical $p=0.45$). The epileptogenic zone appeared not to be better identified with a higher correlation rate. In our study, the small size of the sampling doesn't enable us to draw any conclusions. However, a high number of seizures was not associated to a worse prognostic, demonstrating that CESS do not disturb the presurgical evaluation and the cortical mapping, as it was assumed by Bank et al. **Bank et al (2014)**.

THÈSE SOUTENUE PAR : Nastasia TARDY

TITRE :

Electro-clinical correlations of seizures induced by direct cortical stimulations and spontaneous seizures: relevance to define the epileptogenic zone.

CONCLUSION :

This study, even based on a small sampling, is the first one evaluating the electro-clinical correlations between spontaneous and stimulation-induced seizures and determining the relevance of the stimulations-induced discharges to define the epileptogenic zone.

Our results show a good overlap both for clinical and SEEG findings between the two types of seizures, therefore strongly suggesting that the epileptogenic network can be reactivated by the stimulation. This strengthens the usefulness of stimulation to delineate the epileptogenic zone. However, the removal of the brain area from which seizures were elicited did not seem to have any post-operative prognostic significance.

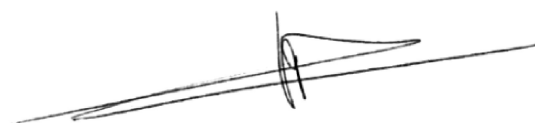
This study was based on visual analysis of SEEG signals, and further studies aiming at comparing spontaneous and electrically-induced seizures could benefit from quantitative measurements of SEEG signals, such as the epileptogenicity index (Bartholomei et al., 2008) or the epileptogenicity maps (David et al., 2011).

VU ET PERMIS D'IMPRIMER
Grenoble, le 20/10/2017

LE DOYEN
DE L'UFR DE MÉDECINE

Pour la Présidente
et par délégation
Le Doyen de Médecine
Pr. Jean-Paul ROMANET

LE PRÉSIDENT DE LA THÈSE
JURY DE MÉDECINE



Pr. Philippe KAHANE

References

Bancaud J, Chauvel P. Commentary: acute and chronic intracranial recordings and stimulation with depth electrodes. In: Engel J Jr., ed. Surgical treatment of the epilepsies. New-York: Raven Press, 1986: 289-96.

Bancaud J, Talairach J, Morel P, Bresson M, Bonis A, Geier S, et al. “Generalized” epileptic seizures elicited by electrical stimulation of the frontal lobe in man. *Electroencephalogr Clin Neurophysiol* 1974; 37: 275-282.

Bank AM, Schevon CA, Hamberger MJ. Characteristics and clinical impact of stimulation-evoked seizures during extraoperative cortical mapping. *Epilepsy Behav* 2014; 34: 6-8.

Bernier GP, Richer F, Giard N, Bouvier G, Mercier M, Turmel A, Saint-Hilaire JM, Electrical Stimulation of the Human Brain in Epilepsy. *Epilepsia* 1990; 31: 513-520.

Chassoux F, Devaux B, Landré E, Turak B, Nataf F, Varlet P, et al. Stereoelectroencephalography in focal cortical dysplasia: a 3D approach to delineating the dysplastic cortex. *Brain* 2000; 123: 1733-1751.

Chauvel P, Landré E, Trottier S, Vignel JP, Biraben A, Devaux B, et al. Electrical stimulation with intracerebral electrodes to evoke seizures. *Adv Neurol* 1993; 63: 115–121.

David O, Bastin J, Chabardès S, Minotti L, Kahane P. Studying network mechanisms using intracranial stimulation in epileptic patients. *Front Syst Neurosci* 2010 Oct 20; 4: 148.

De Salles AA, Swartz BE, Lee TT, Delgado-Escueta AV. Subdural recording and electrical stimulation for cortical mapping and induction of usual seizures. *Stereotact Funct Neurosurg* 1994; 62: 226-231.

Engel JJ, Van Ness Paul C, Rasmussen TB et al. Outcome with respect to epileptic seizures. In: Engel JJr ed. *Outcome with respect to epileptic seizures*. Philadelphia: Lippincott-Raven; 1996: 609–621.

Halgren E, Walter RD, Cherlow DG, Crandall PH. Mental phenomena evoked by electrical stimulation of the human hippocampal formation and amygdala. *Brain* 1978; 101:83-117.

Jacobs J, Zijlmans M, Zelmann R, Olivier A, Hall J, Gotman J, Dubeau François, Value of electrical stimulations and high frequency oscillations (80-500Hz) in identifying epileptogenic areas during intracranial EEG recordings, *Epilepsia*, 51 (4): 573-582, 2010

Jayakar P, Gotman J, Harvey AS, Palmmini A, Tassi L, Schomer D, Dubeau F, Bartolomei F, Yu A, Kršek P, Velis D, Kahane P. Diagnostic utility of invasive EEG for epilepsy surgery: Indications, modalities, and techniques. *Epilepsia* 2016; 57: 1735-1747.

Kahane P, Minotti L, Hoffmann D, Lachaux JP, Ryvlin P. Invasive EEG in the definition of the seizure onset zone: depth electrodes. In : Rosenow F, Lüders HO, eds. *Handbook of Clinical Neurophysiology, Vol.3. Presurgical assessment of the epilepsies with clinical neurophysiology and functional imaging*. Amsterdam : Elsevier BV, 2004 : 109-133.

Kahane P, Tassi L, Francione S, Hoffmann D, Lo Russo G, Munari C. Electroclinical manifestations elicited by intracerebral electric stimulation “shocks” in temporal lobe epilepsy. *Neurophysiol Clin* 1993; 23: 305-326.

Kahane P, Landré E, Minotti L, Francione S, Ryvlin P, The Bancaud and Talairach view on the epileptogenic zone: a working hypothesis, *Epileptic Disord* 2006; 8 (Suppl. 2): S16-26.

Kovac S, Kahane P, Diehl B. Seizures induced by direct electrical cortical stimulation. Mechanisms and clinical considerations. *Clinical Neurophysiology* 2016; 127: 31–39.

Landré E, Turak B, Toussaint D, Trottier S. Intérêt des stimulations électriques intracérébrales en stéréoelectroencéphalographie dans les épilepsies partielles. *Epilepsies* 2004;16: 213-225.

Lüders H, Acharya J, Baumgartner C, Benbadis S, Bleasel A, Burgess R, Dinner DS, Ebner A, Foldvary N, Geller E, Hamer H, Holthausen H, Kotagal P, Morris H, Meencke HJ, Noachtar S, Rosenow F, Sakamoto A, Steinhoff BJ, Tuxhorn I, Wyllie E. Semiological seizure classification. *Epilepsia*. 1998; 39: 1006-1013.

Munari C, Kahane P, Tassi L, Francione S, Hoffmann D, Lo Russo G, Benabid AL., Intracerebral low frequency electrical stimulation: a new tool for the definition of the "epileptogenic area"?. *Acta Neurochir Suppl (Wien)* 1993; 58: 181-185.

Nathan SS, Sinha SR, Gordon B, Lesser RP, Thakor NV. Determination of current density distributions generated by electrical stimulation of the human cerebral cortex. *Electroencephalogr Clin Neurophysiol* 1993; 86: 183-192.

Penfield, Jasper. *Epilepsy and the functional anatomy of human brain*. Boston: 1954; Little, Brown.

Perucca P, Dubeau F, Gotman J. Intracranial electroencephalographic seizure-onset patterns: effect of underlying pathology. *Brain* 2014; 137: 183–96.

Salanova V, Andermann F, Olivier A, Rasmussen T, Quesney LF. Occipital lobe epilepsy: electroclinical manifestations, electrocorticography, cortical stimulation and outcome in 42 patients treated between 1930 and 1991. Surgery of occipital lobe epilepsy. Brain 1992; 115: 1655-1680.

Salanova V, Andermann F, Rasmussen T, Olivier A, Quesney LF. Parietal lobe epilepsy. Clinical manifestations and outcome in 82 patients treated surgically between 1929 and 1988. Brain 1995a; 118: 607-627.

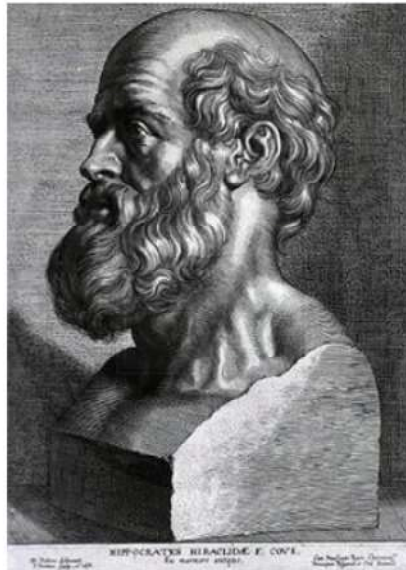
Salanova V, Andermann F, Rasmussen T, Olivier A, Quesney LF. Tumoural parietal lobe epilepsy. Clinical manifestations and outcome in 34 patients treated between 1934 and 1988. Brain 1995b;118:1289–304.

Schulz R, Lüders HO, Tuxhorn I, Ebner A, Holthausen H, Hoppe M, et al. Localization of epileptic auras induced on stimulation by subdural electrodes. Epilepsia 1997; 38: 1321-1329.

Singh S, Sandy S, Wiebe S. Ictal onset on intracranial EEG: Do we know it when we see it? State of the evidence. Epilepsia 2015; 56: 1629-1638.

Trébuchon A, Chauvel P. Electrical Stimulation for Seizure Induction and Functional Mapping in Stereoelectroencephalography. J Clin Neurophysiol 2016; 33: 511-521.

Wieser HG, Bancaud J, Talairach J, Bonis A, Szikla G. Comparative value of spontaneous and chemically and electrically induced seizures in establishing the lateralization of temporal lobe seizures. Epilepsia 1979; 20: 47-59.



SERMENT D'HIPPOCRATE

En présence des Maîtres de cette Faculté, de mes chers condisciples et devant l'effigie d'HIPPOCRATE,

Je promets et je jure d'être fidèle aux lois de l'honneur et de la probité dans l'exercice de la Médecine.

Je donnerais mes soins gratuitement à l'indigent et n'exigerais jamais un salaire au dessus de mon travail. Je ne participerai à aucun partage clandestin d'honoraires.

Admis dans l'intimité des maisons, mes yeux n'y verront pas ce qui s'y passe ; ma langue taira les secrets qui me seront confiés et mon état ne servira pas à corrompre les mœurs, ni à favoriser le crime.

Je ne permettrai pas que des considérations de religion, de nation, de race, de parti ou de classe sociale viennent s'interposer entre mon devoir et mon patient.

Je garderai le respect absolu de la vie humaine.

Même sous la menace, je n'admettrai pas de faire usage de mes connaissances médicales contre les lois de l'humanité.

Respectueux et reconnaissant envers mes Maîtres, je rendrai à leurs enfants l'instruction que j'ai reçue de leurs pères.

Que les hommes m'accordent leur estime si je suis fidèle à mes promesses.

Que je sois couvert d'opprobre et méprisé de mes confrères si j'y manque.

Remerciements

Merci à Lorella pour ces longues heures de lecture de SEEG, humoristiques d'un côté (« comme un malade! »), et source d'inspiration de l'autre, comme peut l'être votre personnalité, à la fois maternelle et directive. On en a souvent besoin. Merci d'avoir compris que mettre en avant les qualités des personnes permet de soutenir, rassurer et faire avancer.

Merci à Philippe pour ses visites inspirantes et son humour décalé, dont nous avons souvent besoin pour soulager la pression. Ce fut un honneur de travailler avec vous, le soutien moral dont vous nous faites preuve est précieux. Merci également pour l'inspiration clinique, la dyschronométrie, l'aphasie anomique, l'akinésie de l'AMS. C'est tout ce dont nous avons besoin pour nous rappeler pourquoi nous pratiquons la neurologie. L'apprentissage de l'urinal compartimenté pourra évidemment aussi nous être utile...

A la Neurologie :

Tout d'abord merci à Pierre Marie Gonnaud qui m'a donné le goût de la neurologie, et à Vincent Tarel qui a pris la suite. Pour leur générosité et gentillesse démesurées.

A mes chefs tant appréciés :

Tout d'abord à Anne Sophie Job, dont j'aurais voulu être la petite sœur, je me contenterai d'être ton camionneur, merci pour ton calme rassurant et ton intégrité, ta capacité à mettre les gens en valeur, merci aussi de n'avoir pas (trop) peur de montrer tes faiblesses. Tu es notre exemple à tous et j'espère que tu le sais.

A Elena Moro, notre maman de la neuro. Merci pour votre personnalité parfois déconcertante et le souci que vous avez pu mettre pour notre formation. Merci aussi pour ce restaurant du 1^{er} semestre, qui a contribué au fait que je continue la médecine.

A Mathieu Vaillant, pour sa gentillesse, et son partage, ses remises en question perpétuelles.

A Olivier Casez pour avoir été présent et m'avoir tant rassurée, et prolongé les contre visites humoristiques où avec un point d'honneur à ne pas écouter. Toc toc.

A Gérard Besson, pour sa personnalité et son grand cœur même s'il le cache bien parfois.

A Olivier Detante pour sa disponibilité au milieu de la nuit pour les thrombolyses improbables, et Isabelle Favre pour son accessibilité et sa gentillesse.

A Marie Barré et Julien Gere, pour ce semestre mémorable, plein de chocolat et de coca cola, de débats anti/pro féministes, et perchés dans la galaxie des spice girls. On évitera les thrombolyses à H+7 la prochaine fois Julien.

A l'équipe d'infectiologie de Chambéry, Emmanuel Forestier, Olivier Rogeaux, Claire Lecomte, Claire Marie Dutrop, et Nastasia El Zeenni dont j'ai tant apprécié l'humanité.

A Louise Cavat, qui a tellement embelli mes gardes, à la fois par sa bonne humeur, son professionnalisme, et ses fromages.

A toutes les équipes hospitalières, dévouées au service des patients, que je respecte tant et qui font un travail si difficile au quotidien, merci pour les prescriptions rattrapées, et votre compréhension dans les moments difficiles.

A mes cointernes,

A Marie, merci d'être là quand on en a besoin, pour ta bonne humeur, et ta nonchalance qui me font tellement de bien, je suis heureuse d'avoir partagé cette période de nos vies avec toi. Merci aussi à Alexis, son humour sarcastique incomparable, et le winch bien sûr.

A Pauline, pour ce semestre difficile, et les semaines de DU, ton exigence a pu me pousser vers le haut, même si je pense qu'elle pourrait être revue à la baisse parfois, tant pour toi que pour les autres, et dans laquelle je me reconnais trop souvent.

A Clem pour sa gentillesse profonde, « un peu de mystère c'est bien parfois », et Seb pour les potins, et le soutien rassurant de celui « qui y est déjà passé ». A Jérémie, avec un « e » merci pour ton savoir vivre, et ta bonne humeur, à Fanny et Anne, les accolithes si généreuses et humaines par nature, à Guillaume l'être sensible de la neuro, à Lucie et Hélène avec qui j'aurais voulu partager plus, à Giovanni, pour sa curiosité envers tout et tous, Sara pour ce semestre difficile pour moi, merci d'avoir supporté mes sauts d'humeur, à Loïc, Hugo, pour leur calme tranquille, et à Thomas pour avoir forcé tout le monde à manger à l'heure!

A Victor Cubillé, Anne Laure Destrem, et Chloé Moulin pour ce semestre à Chambéry mémorable...

A ma famille,

Plus particulièrement à ma mère qui m'a tant soutenue, et a vécu autant que moi les moments difficiles, de la P1 à l'accident de voiture pendant l'internat. Merci de l'exemple que tu me montres chaque jour, de tolérance avant tout. Les années toutes les deux n'ont pas toujours été roses, et pourtant elles sont d'autant plus lumineuses que tu les as éclairées de ta philosophie et ton amour, mais pour tellement d'autre chose encore. Merci aussi de l'exemple de femme indépendante que tu représentes. Malgré mes tentatives, je ne le suis probablement pas autant que toi.

A Franck, que j'aime tant, un autre exemple dans ma vie, de simplicité, de courage et d'humilité, tu as été un pilier dans la tempête. Merci d'avoir embelli nos vies, à maman et à moi.

A Claude et Catherine, merci de votre présence votre soutien et votre amour, je pense que vous pouvez arrêter de croire qu'il faut encore rattraper le temps perdu à présent. A mon frère Paul, dont je suis si fière, de son ouverture envers les autres, sa capacité à apprécier sincèrement n'importe quelle attention, son ingéniosité et sa curiosité. Je vous aime fort.

A Gérard pour son amour et son éducation, se perpétrant malgré l'absence et l'incompréhension de mes choix de vie, merci pour m'avoir poussée au début, et tenté de me ralentir à la fin, merci pour les bain-douches, les cours de math, de dessin, pour la musique classique et tout le reste... A Luan et Neil Vinh, pour ne pas m'avoir oubliée, et pour la fusée-bouteille ! Je souhaite de tout cœur faire d'avantage partie de vos vies.

A mes grands parents, Yvonne et Guy, pour leur amour et leur soutien inconditionnel. Merci pour les allers-retours à la fac et les repas chronométrés pendant les révisions. Les révision d'histoire et merci mamy pour ton énergie et ton amour, inépuisables, comme tes recettes de cuisine.

A ma marraine Cath, pour tout ce que tu es, ton humilité, ton soutien, ton amour et ta présence.

A mamy Helga, d'avantage ma grand-mère que bien d'autre. Merci pour ton soutien malgré l'absence, pour tes histoires du soir et les semaines de vacances, les coccinelles sur la neige. On ne peut pas le dire à toutes les grandes mères mais toi oui : merci d'être ma mamy.

A tous mes cousins cousines, et oncles et tantes, si nombreux et si présents dans ma vie, pour leur soutien et leur bonne humeur.

A Béa pour son côté décalé et féministe, ses plans foireux, et son ouverture sur le monde qui m'a beaucoup appris, et l'importance qu'elle met à être présente dans ma vie.

A Elodie pour sa bonne humeur, son insistance téléphonique et son hippocampe surnaturel.

A Chris, ma maman de substitution pour certaines périodes de ma vie.

A mamy Dedette, pour ton émotivité à toute épreuve, et pour le mois à l'usine...

Aux Bozons, pour m'avoir accueillie parmi les leurs, et avoir également supporté mes heures de travail, pour leur amour des montagnes, et toutes les petites attentions.

A mes amis :

A Léa, que je respecte tant, merci pour ton amitié sans faille, et ton exigence qui m'ont poussée vers le haut. Je sais que nous allons encore partager tant de chose encore, tant sportives que familiales...

Je n'oublie pas Jason et Laloum qui me font tant rire. Si vous pouviez être un tout petit moins macho, je vous aimerais encore plus...

A Féréole, ma zouev, les 2 distraites de service, merci pour tous les moments passés et futurs partagés, merci d'être aussi bon public, et de l'importance que tu accordes à notre amitié et à la vie en générale.

A Manu pour les révisions de l'internat surtout, et son amitié, ses préoccupations de fille qui m'autorise à l'être aussi un peu et Clem, pour les rigolades, et le rosé, sa présence n'importe quand si ça ne va pas.

A Camila pour son côté dégenté, les soirées lycéennes, les vacances au Brésil, les hébergements à Paris, et Julia et Maud, dont l'amitié compte tellement pour moi.

A Aurélie pour les footings du matin, et ce semestre en neuro gé transformé grâce à toi.

A Margaux, que j'admire tant et que j'aurai voulu voir plus souvent.

A Anais, pour son peps, et sa joie de vivre qui transcende les gens alentours.

A Eve pour cette année de coloc, le chocolat dans le placard et le fromage dans le frigo, que je mangeais autant que toi, les virées à carrefour à 21h et surtout ces dernières semaines où tu m'as supportée et chouchouter.

Et toute la clique, Victor pour me faire relativiser alors que c'est le plus stressé, et Nico celui sur qui on peut compter, sauf pour compter l'éstran, à la belle Lucille, Quentin son leadership en soirée, et sa chambre abracadabrante, Charles et Linéa les intrépides, Thomas et son placard vide et sa Céline que j'apprécie tant, à Aude pour sa gentillesse et son bonheur de vivre, à Fx pour la participation vaisselle à la coloc...

A Elise et Mariane, les star wars girls, merci pour les quelques rencontres qui ont eu le pouvoir de me transcender tant par les discussions philosophiques que par votre humour inépuisable, non épuisant...

A Bruno et Enora, pour leur côté aventurier, et les soirées barbecue.

A Cécile, Megan et Javi pour cette année à Madrid si mémorable.

A Claire et Sam pour les éclats de rire, les fenecs et autres animaux nocturnes. A Manu et Virginie, Julien et Jess, Arsène et Manu de qui j'ai partagé la vie pendant un certain temps, et à leurs nombreux, actuels ou futurs enfants.

A Benjamin, mon amour. Merci de m'avoir attendue pendant toutes ces années, de ne pas avoir lâché malgré la distance et les coups durs, les concours blancs, les heures dans les bouquins à la lumière de ta petite lampe de bureau, puis les gardes, le tout malgré mon stress parfois ingérable. Merci de ton honnêteté et ton intégrité qui m'ont transformée, de ta confiance en moi. Merci d'avoir traversé ma vie et d'avoir grandi avec moi. Notre histoire est déjà si belle, notre nouvelle vie qui commence risque de nous transporter, comme ce fameux train qui ne cessait d'accélérer...