



**HAL**  
open science

# Transcatheter closure of patent ductus arteriosus in very and extremely preterm infants: the Grenoble-Alpes University Hospital experience since 2015 and the comparison to the historical surgical cohort of 2010-2015

Johanne Auriau

## ► To cite this version:

Johanne Auriau. Transcatheter closure of patent ductus arteriosus in very and extremely preterm infants: the Grenoble-Alpes University Hospital experience since 2015 and the comparison to the historical surgical cohort of 2010-2015. Human health and pathology. 2019. dumas-02078317

**HAL Id: dumas-02078317**

**<https://dumas.ccsd.cnrs.fr/dumas-02078317>**

Submitted on 25 Mar 2019

**HAL** is a multi-disciplinary open access archive for the deposit and dissemination of scientific research documents, whether they are published or not. The documents may come from teaching and research institutions in France or abroad, or from public or private research centers.

L'archive ouverte pluridisciplinaire **HAL**, est destinée au dépôt et à la diffusion de documents scientifiques de niveau recherche, publiés ou non, émanant des établissements d'enseignement et de recherche français ou étrangers, des laboratoires publics ou privés.



## AVERTISSEMENT

Ce document est le fruit d'un long travail approuvé par le jury de soutenance et mis à disposition de l'ensemble de la communauté universitaire élargie.

Il n'a pas été réévalué depuis la date de soutenance.

Il est soumis à la propriété intellectuelle de l'auteur. Ceci implique une obligation de citation et de référencement lors de l'utilisation de ce document.

D'autre part, toute contrefaçon, plagiat, reproduction illicite encourt une poursuite pénale.

Contact au SID de Grenoble :  
[bump-theses@univ-grenoble-alpes.fr](mailto:bump-theses@univ-grenoble-alpes.fr)

## LIENS

Code de la Propriété Intellectuelle. articles L 122. 4

Code de la Propriété Intellectuelle. articles L 335.2- L 335.10

<http://www.cfcopies.com/juridique/droit-auteur>

<http://www.culture.gouv.fr/culture/infos-pratiques/droits/protection.htm>

Année : 2019

**FERMETURE PERCUTANÉE DU CANAL ARTÉRIEL PERSISTANT  
CHEZ LE GRAND ET TRÈS GRAND PRÉMATURÉ**

Expérience du CHU de Grenoble depuis 2015 et Comparaison à la  
Cohorte Historique Chirurgicale de 2010-2015

THÈSE  
PRÉSENTÉE POUR L'OBTENTION DU TITRE DE DOCTEUR EN MÉDECINE  
DIPLOME D'ÉTAT

**Johanne AURIAU**

[Données à caractère personnel]

THÈSE SOUTENUE PUBLIQUEMENT À LA FACULTÉ DE MÉDECINE DE  
GRENOBLE

Le : **07/03/2019**

DEVANT LE JURY COMPOSÉ DE :

**Président du jury** : Monsieur le Professeur Gérald VANZETTO

**Membres** :  
Monsieur le Professeur Thierry DEBILLON  
Monsieur le Professeur Alain FRAISSE (co-directeur de thèse)  
Madame le Docteur Hélène BOUVAIST (directrice de thèse)  
Madame le Docteur Stéphanie DOUCHIN

## ENSEIGNANTS DE L'UFR MEDECINE

Doyen de la Faculté : **Professeur Patrice MORAND**

**Année 2018-2019**

<b>CORPS</b>	<b>NOM – PRENOM</b>	<b>Discipline Universitaire</b>
PU-PH	ALBALADEJO Pierre	Anesthésiologie réanimation
PU-PH	APEL Florent	Ophtalmologie
PU-PH	ARVIEUX-BARTHELEMY Catherine	Chirurgie générale
PU-PH	BAILLET Athan	Rhumatologie
PU-PH	BARONE-ROCHETTE Gilles	Cardiologie
PU-PH	BAYAT Sam	Physiologie
PU-PH	BENHAMOU Pierre Yves	Endocrinologie, diabète et maladies métaboliques
PU-PH	BERGER François	Biologie cellulaire
MCU-PH	BIDART-COUTTON Marie	Biologie cellulaire
MCU-PH	BOISSET Sandrine	Agents infectieux
PU-PH	BOLLA Michel	Cancérologie-Radiothérapie
PU-PH	BONAZ Bruno	Gastro-entérologie, hépatologie, addictologie
PU-PH	BONNETERRE Vincent	Médecine et santé au travail
PU-PH	BOREL Anne Laure	Endocrinologie, diabète et maladies métaboliques
PU-PH	BOSSON Jean Luc	Biostatistiques, informatique médicale et technologies de communication
MCU-PH	BOTTARI Serge	Biologie cellulaire
PU-PH	BOUGEROL Thierry	Psychiatrie d'adultes
PU-PH	BOUILLET Laurence	Médecine interne
PU-PH	BOUZAT Pierre	Réanimation
PU-PH	BRAMBILLA Christian	Pneumologie
PU-PH	BRAMBILLA Elisabeth	Anatomie et Cytologie pathologiques
MCU-PH	BRENIER-PINCHART Marie Pierre	Parasitologie et mycologie
PU-PH	BRICAULT Yvan	Radiologie et imagerie médicale
PU-PH	BRICHON Pierre Yves	Chirurgie thoracique et cardio-vasculaire
MCU-PH	BRIOT Raphaël	Thérapeutique, médecine d'urgence
MCU-PH	BROUILLET Sophie	Biologie et médecine du développement et de la reproduction
PU-PH	CAHN Jean Yves	Hématologie
PU-PH	CANALI-SCHWEBEL Carole	Réanimation médicale
PU-PH	CARPENTIER Françoise	Thérapeutique, médecine d'urgence
PU-PH	CARPENTIER Patrick	Chirurgie vasculaire, médecine vasculaire
PU-PH	CESBRON Jean Yves	Immunologie
PU-PH	CHABARDES Stephan	Neurochirurgie
PU-PH	CHABRE Olivier	Endocrinologie, diabète et maladies métaboliques
PU-PH	CHAFFANJON Philippe	Anatomie
PU-PH	CHARLES Julie	Dermatologie
PU-PH	CHAVANON Olivier	Chirurgie thoracique et cardiovasculaire
PU-PH	CHIQUET Christophe	Ophtalmologie
PU-PH	CHIRICA Mircea	Chirurgie générale
PU-PH	CINQUIN Philippe	Biostatistiques, informatique médicale et technologies de communication
MCU-PH	CLAVARINO Giovanna	Immunologie
PU-PH	COHEN Olivier	Biostatistiques, informatique médicale et technologies de communication
PU-PH	COURVOISIER Aurélien	Chirurgie Infantile
PU-PH	COUTTON Charles	Génétique
PU-PH	COUTURIER Pascal	Gériatrie et biologie du vieillissement
PU-PH	CRACOWSKI Jean Luc	Pharmacologie fondamentale, pharmacologie clinique
PU-PH	CURE Hervé	Oncologie
PU-PH	DEBATY Guillaume	Médecine d'urgence
PU-PH	DEBILLON Thierry	Pédiatrie
PU-PH	DECAENS Thomas	Gastro-entérologie, hépatologie, addictologie
PU-PH	DEMATTEIS Maurice	Addictologie
PU-PH	DEMONGEOT Jacques	Biostatistiques, informatique médicale et technologies de communication

MCU-PH	DERANSART Colin	Physiologie
PU-PH	DESCOTES Jean Luc	Urologie
PU-PH	DETANTE Olivier	Neurologie
MCU-PH	DIETRICH Klaus	Génétique et procréation
MCU-PH	DOUTRELEAU Stéphane	Physiologie
MCU-PH	DUMESTRE-PERARD Chantal	Immunologie
PU-PH	EPAULARD Olivier	Maladies infectieuses et Tropicales
PU-PH	ESTEVE François	Biophysique et médecine nucléaire
	EYSSERIC Hélène	Médecine légale et droit de la santé
PU-PH	FAGRET Daniel	Biophysique et médecine nucléaire
PU-PH	FAUCHERON Jean Luc	Chirurgie générale
	FAURE Julien	Biochimie et biologie moléculaire
PU-PH	FERRETTI Gilbert	Radiologie et imagerie médicale
PU-PH	FEUERSTEIN Claude	Physiologie
PU-PH	FONTAINE Éric	Nutrition
PU-PH	FRANCOIS Patrice	Epidémiologie, économie de la santé et prévention
MCU-MG	GABOREAU Yoann	Médecine générale
PU-PH	GARBAN Frédéric	Hématologie, transfusion
PU-PH	GAUDIN Philippe	Rhumatologie
PU-PH	GAVAZZI Gaëtan	Gériatrie et biologie du vieillissement
PU-PH	GAY Emmanuel	Neurochirurgie
MCU-PH	GILLOIS Pierre	Biostatistiques, informatique médicale et technologies de communication
PU-PH	GIOT Jean Philippe	Chirurgie plastique, reconstructrice et esthétique
MCU-PH	GRAND Sylvie	Radiologie et imagerie médicale
PU-PH	GRIFFET Jacques	Chirurgie infantile
MCU-PH	GUZUN Rita	Endocrinologie, diabète et maladies métaboliques
PU-PH	HAINAUT Pierre	Biochimie, biologie moléculaire
PU-PH	HALIMI Serge	Endocrinologie, diabète et maladies métaboliques
PU-PH	HENNEBICQ Sylviane	Génétique et procréation
PU-PH	HOFFMANN Pascale	Gynécologie obstétrique
PU-PH	HOMMEL Marc	Neurologie
PU-PG	IMBERT Patrick	Médecine générale
PU-PH	JOUK Pierre Simon	Génétique
PU-PH	JUVIN Robert	Rhumatologie
PU-PH	KAHANE Philippe	Neurologie
MCU-PH	KASTLER Adrien	Radiologie et imagerie médicale
PU-PH	KRAINIK Alexandre	Radiologie et imagerie médicale
PU-PH	LABARERE José	Epidémiologie, Eco. De la Santé
MCU-PH	LABLANCHE Sandrine	Endocrinologie, diabète et maladies métaboliques
MCU-PH	LANDELLE Caroline	Bactériologie - Virologie
MCU-PH	LARDY Bernard	Biochimie et biologie moléculaire
MCU-PH	LE PISSART Audrey	Biochimie et biologie moléculaire
PU-PH	LECCIA Marie Thérèse	Dermatologie
PU-PH	LEROUX Dominique	Génétique
PU-PH	LEROY Vincent	Gastro-entérologie, hépatologie, addictologie
PU-PH	LETOUBLON Christian	Chirurgie digestive et viscérale
PU-PH	LEVY Patrick	Physiologie
PU-PH	LONG Jean Alexandre	Urologie
MCU-PH	LUPO Julien	Virologie
PU-PH	MAGNE Jean Luc	Chirurgie vasculaire
MCU-PH	MAIGNAN Maxime	Médecine d'urgence
PU-PH	MAITRE Anne	Médecine santé et travail
MCU-PH	MALLARET Marie Reine	Epidémiologie, Eco. De la Santé et prévention
PU-PH	MALLION Jean Michel	Cardiologie
MCU-PH	MARLU Raphaël	Hématologie, transfusion
MCU-PH	MAUBON Danièle	Parasitologie, mycologie
PU-PH	MAURIN Max	Bactériologie - Virologie
MCU-PH	MC LEER Anne	Cytologie et histologie
PU-PH	MORAND Patrice	Bactériologie – Virologie
PU-PH	MOREAU-GAUDRY Alexandre	Biostatistiques, informatique médicale et technologies de communication
PU-PH	MORO Elena	Neurologie
PU-PH	MOROT-SIBILOT Denis	Pneumologie

PU-PH	<b>MOUSSEAU Mireille</b>	Cancérologie
PU-PH	<b>MOUTET François</b>	Chirurgie plastique, reconstructrice et esthétiques. Brûlologie
MCU-PH	<b>PACLET Marie Hélène</b>	Biochimie et biologie moléculaire
PU-PH	<b>PALOMBI Olivier</b>	Anatomie
PU-PH	<b>PARK Sophie</b>	Hématologie, transfusion
PU-PH	<b>PASSAGIA Jean Guy</b>	Anatomie
PU-PH	<b>PAYEN DE LA GARANDERIE Jean François</b>	Anesthésiologie réanimation
MCU-PH	<b>PAYSANT François</b>	Médecine légale et droit de la santé
MCU-PH	<b>PELLETIER Laurent</b>	Biologie cellulaire
PU-PH	<b>PELLOUX Hervé</b>	Parasitologie et mycologie
PU-PH	<b>PEPIN Jean Louis</b>	Physiologie
PU-PH	<b>PERENNOU Dominique</b>	Médecine physique et réadaptation
PU-PH	<b>PERNOD Gilles</b>	Médecine vasculaire
PU-PH	<b>PIOLAT Christian</b>	Chirurgie infantile
PU-PH	<b>PISON Christophe</b>	Pneumologie
PU-PH	<b>PLANTAZ Dominique</b>	Pédiatrie
PU-PH	<b>POIGNARD Pascal</b>	Virologie
PU-PH	<b>POLACK Benoit</b>	Hématologie
PU-PH	<b>POLOSAN Mircea</b>	Psychiatrie d'adultes
PU-PH	<b>PONS Jen Claude</b>	Gynécologie Obstétrique
PU-PH	<b>RAMBEAUD Jean Jacques</b>	Urologie
PU-PH	<b>RAY Pierre</b>	Biologie et médecine du développement et de la reproduction
MCU-PH	<b>RENDU John</b>	Biochimie et Biologie moléculaire
MCU-PH	<b>RIALLE Vincent</b>	Biostatistiques, informatique médicale et technologies de communication
PU-PH	<b>RIGHINI Christian</b>	Oto-rhino-laryngologie
PU-PH	<b>ROMANET Jean Paul</b>	Ophtalmologie
PU-PH	<b>ROSTAING Lionel</b>	Néphrologie
MCU-PH	<b>ROUSTIT Matthieu</b>	Pharmacologie fondamentale, pharmaco clinique, addictologie
MCU-PH	<b>ROUX-BUISSON Nathalie</b>	Biochimie, toxicologie et pharmacologie
MCU-PH	<b>RUBIO Amandine</b>	Pédiatrie
PU-PH	<b>SARAGAGLIA Dominique</b>	Chirurgie orthopédique et traumatologie
MCU-PH	<b>SARTRE Véronique</b>	Génétique
PU-PH	<b>SAUDOU Frédéric</b>	Biologie cellulaire
PU-PH	<b>SCHMERBER Sébastien</b>	Oto-rhino-laryngologie
PU-PH	<b>SCOLAN Virginie</b>	Médecine légale et droit de la santé
MCU-PH	<b>SEIGNEURIN Arnaud</b>	Epidémiologie, Eco. De la Santé et prévention
PU-PH	<b>STAHL Jean Paul</b>	Maladies infectieuses, maladies tropicales
PU-PH	<b>STANKE Françoise</b>	Pharmacologie fondamentale
MCU-PH	<b>STASIA Marie José</b>	Biochimie et biologie moléculaire
PU-PH	<b>STURM Nathalie</b>	Anatomie et cytologie pathologiques
PU-PH	<b>TAMISIER Renaud</b>	Physiologie
PU-PH	<b>TERZI Nicolas</b>	Réanimation
MCU-PH	<b>TOFFART Anne Claire</b>	Pneumologie
PU-PH	<b>TONETTI Jérôme</b>	Chirurgie orthopédique et traumatologie
PU-PH	<b>TOUSSAINT Bertrand</b>	Biochimie et biologie moléculaire
PU-PH	<b>VANZETTO Gérald</b>	Cardiologie
PU-PH	<b>VUILLEZ Jean Philippe</b>	Biophysique et médecine nucléaire
PU-PH	<b>WEIL Georges</b>	Epidémiologie, Eco. De la Santé et prévention
PU-PH	<b>ZAUI Philipe</b>	Néphrologie
PU-PH	<b>ZARSKI Jean Pierre</b>	Gastro-entérologie, hépatologie, addictologie

**PU-PH** : Professeur des Universités et Praticien Hospitalier

**MCU-PH** : Maître de Conférences des Universités et Praticien Hospitalier

**PU-MG** : Professeur des Universités de Médecine Générale

**MCU-MG** : Maître de Conférences des Universités de Médecine Générale

## **Remerciements :**

A Monsieur le Professeur Gérald Vanzetto, merci d'avoir accepté de présider mon jury de thèse. La richesse de votre enseignement et la simplicité avec laquelle vous le transmettez a fortement contribué à me faire aimer la cardiologie. C'est un honneur de vous avoir comme président de jury.

A Madame le Docteur Hélène Bouvaist et Monsieur le Professeur Alain Fraisse, merci de m'avoir encadrée et dirigée pour ce travail.

Hélène, merci pour ton soutien, tes conseils et tout simplement ta présence tout au long de mon parcours. Tes mots sont toujours justes, c'est une grande fierté de t'avoir comme directrice de thèse.

Alain, merci d'avoir accepté depuis Londres de co-diriger mon travail. J'admire votre énergie, votre disponibilité et surtout votre approche pédagogique toujours constructive dans les travaux que l'on a pu faire ensemble. Pour tout cela, j'espère continuer à travailler et apprendre à vos côtés.

A Monsieur le Professeur Thierry Debillon, c'est un honneur de vous compter parmi les membres de mon jury. Merci pour votre confiance et votre soutien.

A Madame le Docteur Stéphanie Douchin, je suis très heureuse de t'avoir dans mon jury. C'est une chance de travailler et d'apprendre avec toi, merci pour tout le temps que tu me consacres en plus de la place que tu m'as faite dans ton bureau pour cette année.

Au Docteur Gérard Blaysat, votre rencontre a été décisive dans mon choix de rester sur Grenoble pour me former à la cardiologie congénitale. Merci pour tout, vous m'avez transmis votre passion, votre engagement et votre humanité avec les patients comme avec les équipes. J'espère en faire bon usage.

Au Professeur Pierre-Simon Jouk, merci de m'avoir encadrée pour mon Master 2. Votre optimisme à toute épreuve est une force qui m'a portée. Merci aussi à l'équipe du laboratoire TIMC-IMAG, le Docteur Yves Usson, Madame Gabrielle Michalowicz et le Docteur Luu Truong qui ont partagé mon travail et m'ont transmis la rigueur scientifique et le plaisir de la recherche.

Au Docteur Benoît Berthoud, l'assistant idéal de tout interne (et de tout patient). Merci Benoit pour tout ce que tu m'as appris, de l'écho cœur aux mots pour les patients, toujours avec une pointe d'humour. C'était une chance de t'avoir à mon tout début d'internat.

Au Docteur Stéphanie Marlière, j'ai adoré travailler avec toi à l'USIC, et resterai toujours admirative sur ta conduite défilant tout SAMU quand il s'agit de venir à 3h du matin sauver un infarctus.

Au Docteur Muriel Salvat, merci pour ta bienveillance et ton modèle d'engagement quotidien pour les patients.

Au Docteur Carole Saunier, merci d'être toujours disponible pour partager tes connaissances échographiques, et m'avoir aidé dans beaucoup de situations, toujours avec humilité et humour.

Au Docteur Estelle Vautrin, j'ai apprécié ta disponibilité et ta clarté dans les prises en charge des patients pour toutes les fois où je t'ai sollicitée.

Au Docteur Pierre-Vladimir Ennezat, votre anticonformisme et votre plaisir de transmettre nous poussent au quotidien à se remettre en question. Merci d'oser nous bousculer.

A l'équipe de Rythmologie du CHU : le Professeur Pascal Defaye, le Docteur Peggy Jacon, le Docteur Sandrine Venier et le Docteur Florian Dugenet. J'ai aimé travailler à vos côtés, vous savez transmettre et ne comptez pas votre temps pour nous apprendre la rythmologie, c'est précieux.

Aux Docteurs Aude Boignard, Caroline Augier, Marion Maurin, Olivier Ormezzano et Bernard Bertrand, merci d'avoir partagé avec moi vos connaissances.

Au Docteur Damien Bedague, présent sur l'ensemble des cathétérismes pédiatriques et néonataux, que j'admire pour son audace de se confronter aux grands prématurés, toujours avec calme et sérénité.

Aux médecins de Réanimation Pédiatrique de l'Hôpital Couple-Enfants, merci pour votre accueil dans ma première expérience pédiatrique en tant qu'interne. Vous m'avez accordé votre confiance, et j'ai apprécié travailler avec vous. Merci pour cela, et pour votre cadeau de départ qui me suit désormais partout... la calculette, outil indispensable en pédiatrie !

Aux médecins de Réanimation Néonatale de l'Hôpital Couple-Enfants, équipe unie et généreuse, merci de m'avoir appris le monde de la Néonatalogie. J'ai découvert la prématurité, sa complexité, et surtout la prise en charge globale et très souvent pluridisciplinaire de l'enfant au-delà de la simple prise en charge cardiologique. J'espère que mon travail de thèse reflète cela.

Au Docteur Eglantine Hullo, qui transmet à chaque moment sourire et bonne humeur, ingrédients essentiels pour le travail d'équipe.

Au Professeur Jacques Monségu, chef de service de la cardiologie du GHM ainsi qu'à l'ensemble des cardiologues du service (Dr Benjamin Faurie, Dr Mohamed Abdellaoui, Dr Thierry Fourme, Dr Damien Guijarro, Dr Pierre Gautier, Dr Pierre Bourlard, Dr Alix Martin, Dr Alain Rouge, Dr Agathe Gaillard-Coadon), merci pour votre accueil, que ce soit dans le service, au bloc CICI pour les quatre mains en coro ou encore à tes côtés Alix pour les piles du vendredi soir. J'ai aussi apprécié le temps que vous m'avez accordé pour finaliser ce travail de thèse, ça m'a été très précieux.

A mes cointernes de cardio, pour la plupart devenus grands avec qui j'ai eu le plaisir de partager mes années d'internat et qui m'ont pour certains beaucoup appris : Adrien, épicurien toujours prêt à recharger les batteries (à piles); Katell, fleur des îles et docteur des petits cœurs; Nicolas, maître dompteur des radiales; Matthieu, le plus annécien des



parisiens; Thomas, Duracell-ultraplusboost-power+: l'énergie qui ne s'arrête pas, et toujours là quand j'ai eu besoin de toi; Elodie, la force tranquille et ma grande sœur des débuts; Océane, philosophe green-cardiologie; Marjorie, ma co-young-usic-girl; Lisa, qui m'a fait découvrir les joies du ski de fond (et du déjeuner en terrasse qui suit); Léa, ma binôme de boxe préférée; Lauriane, crazy mama d'une petite Agathe; Anne, chef interne en or; Sara, l'efficacité incarnée ; et tous les autres, Aure-Elise, Thomas B., Antoine, Arnaud, Lucie, Elodie, Victor, Benjamin, Guillaume, Antoine, Estelle, Remi, Laura, Lou et Charles-Éric.

A tous mes cointernes/assistants venus d'autres horizons : Virgile et Cédric, merci pour les fou-rires; Emilien, même si nos débats politiques ont parfois divergé j'ai adoré bosser avec toi; Delphine et Pauline, vous nous manquez sur Grenoble ; Myriam, Marie, Charlotte, Claire-Sophie et Aurélie, vous êtes de super pédiatres.

Et bien sûr, à tous mes amis et ma famille qui m'accompagnent depuis de nombreuses années, que j'aime, et qui font de ma vie un chouette équilibre.

Lucie, avec toi pas besoin de finir les phrases, tu connais déjà la fin. Et pourtant, l'impression d'avoir toujours quelque chose à te raconter ! Ce stage de médecine interne aura créé une belle amitié.

Agnès, j'espère continuer à entendre ton rire encore longtemps, surtout ne change jamais, reste entière comme tu es, notre amitié est faite pour durer.

Sonia, dix ans d'amitié déjà, qui a résisté à ton départ pour le pays du Chardonnay... obligées de se retrouver à Deauville ou ailleurs, et de créer de nouveaux beaux souvenirs... finalement c'est pas mal aussi !

Charlène, bon Toulouse-Grenoble ce n'est pas très pratique, tu me manques... alors... tu reviens quand ?

Alex, je te tire mon chapeau pour avoir tenu toutes ces soirées où ça parlait médecine, souvent entouré de filles, quand toi tu projetais de t'envoler aux commandes de ton avion. C'est chose faite, j'en suis fière, et suis heureuse de te compter parmi mes amis.

Lucie (aka *Lucia de la noche*), tu es la preuve que médecine et pharma ça peut faire un joli couple d'amitié, et qui dure !

Au complément du Club des 5 (Quentin, Antoine, Ariane), merci pour les moments de rire et de détente avec vous !

A tous ceux que je ne cite pas mais qui comptent aussi beaucoup pour moi.

A ma mère, fidèle et à mes côtés depuis le début (pas le choix !). Ta force est mon modèle.

A Robin, que j'aime.

## **RESUME**

Depuis 2015, une nouvelle stratégie de fermeture percutanée du canal artériel persistant (CAP) du prématuré a été adoptée au CHUGA, en remplacement de l'ancienne stratégie chirurgicale de référence (ligature par thoracotomie). L'objectif de l'étude est de comparer l'efficacité et la sécurité de ces deux stratégies, en analysant de façon rétrospective la cohorte historique de CAP fermés par voie chirurgicale entre 2010-2015, et celle des CAP fermés par voie veineuse percutanée (prothèse ADOIIAS-Abbott®) entre 2015-2018 au CHUGA. Les données ont été recueillies sur la base des dossiers médicaux, et secondairement comparées aux résultats de la littérature. 11 prématurés ont été identifiés dans chaque groupe, avec des caractéristiques comparables à la naissance. L'âge et poids médian lors de la procédure était de 29 jours et 1400g dans le groupe percutané contre 25 jours et 1225g dans le groupe chirurgical ( $p=0.17$  et  $p=0.21$  respectivement). Aucun décès lié aux procédures n'est survenu, ni complication grave suite à la fermeture percutanée. Cependant la durée médiane de ventilation invasive post-procédure était de 9 jours dans le groupe chirurgical contre 3 jours dans le groupe percutané ( $p=0.052$ ), associé à un nombre plus élevé de complications liées à la ventilation prolongée : 6/11 contre 0/11,  $p=0.012$ . Dans notre centre, la stratégie interventionnelle apparaît aussi efficace que la chirurgie à court et moyen terme, avec un très faible taux de complication per et post-procédure. Ces données sont concordantes avec celles de la littérature et permettent d'avancer que la balance bénéfique/risque semble actuellement favorable pour la stratégie percutanée au-delà de 1000 grammes.

**Mots-Clés** : Canal artériel Persistant ; Fermeture percutanée ; Prématurité

## **SUMMARY**

Since 2015, a new percutaneous strategy for invasive patent ductus arteriosus (PDA) closure in preterm infants replaced the old surgical strategy (ligation by thoracotomy) in the CHUGA. Our objective is to compare the efficacy and the safety of both strategies, as the surgical ligation remains the gold standard for many centers. We analyzed the historical cohort of preterm infants who underwent surgical PDA ligation over 2010-2018 ( $n=11$ ), and the consecutive cohort of those who underwent percutaneous PDA closure (ADOIIAS device-Abbott®) over 2015-2018 ( $n=11$ ). Data were collected from medical reports, and were secondarily compared to the literature. The median age and weight at the procedure were 29 days and 1400 grams in the percutaneous group, versus 25 days and 1225 grams in the surgical group ( $p=0.17$  and  $p=0.21$  respectively). No death occurred related to both procedures, and no complications of percutaneous closure were reported. However, the median time under invasive ventilation after surgical PDA closure was 9 days, whereas it was 3 days after percutaneous closure ( $p=0.052$ ). More complications related to prolonged invasive ventilation were report in the surgical group: 6/11 versus 0/11,  $p=0.012$ . Finally, in our center, the interventional strategy appears as effective as the surgery at short- and mid-term follow-up, with very low rate of complications. These results are consistent with the literature and suggest that the benefit/risk balance seems actually favorable for the percutaneous strategy beyond 1000 grams.

**Key-Words**: PDA closure; Transcatheter intervention; Prematurity

## TABLE of CONTENTS

<b>1. INTRODUCTION.....</b>	<b>11</b>
<b>2. METHODS .....</b>	<b>14</b>
2.1. Study design.....	14
2.2. Selection of patients for invasive PDA closure .....	15
2.3. Percutaneous closure procedure.....	16
2.4. Surgical closure procedure .....	18
2.5. Statistical analysis .....	20
<b>3. RESULTS .....</b>	<b>20</b>
3.1. Transcatheter PDA closure: the new invasive strategy .....	20
3.1.1. <i>Demographics and preprocedural management</i> .....	20
3.1.2. <i>Transcatheter intervention and follow-up</i> .....	22
3.1.3. <i>Respiratory status and Weight gain</i> .....	23
3.2. Surgical Ligation: the old strategy compared to the new .....	24
3.2.1. <i>Before the surgery</i> .....	24
3.2.2. <i>At the time of surgical PDA ligation</i> .....	26
3.2.3. <i>Surgical complications and follow-up</i> .....	26
<b>4. DISCUSSION.....</b>	<b>27</b>
4.1. Percutaneous vs surgical closure: Is there a better choice?.....	27
4.2. Transcatheter PDA closure: Is there a limit weight? .....	28
4.3. Is there an optimal timing for invasive PDA the closure?.....	32
<b>5. CONCLUSION .....</b>	<b>33</b>
<b>6. REFERENCES .....</b>	<b>34</b>

## LIST OF ABBREVIATION

**BDP:** Bronchopulmonary Dysplasia

**BiPAP:** Bilevel Positive Airway Pressure

**BW:** Birth Weight

**CPAP:** Continuous Positive Airway Pressure

**DA:** Ductus Arteriosus

**ENT:** Ear, Nose, Throat

**GA:** Gestational Age

**HFO:** High Frequency Oscillation

**IVC:** Inferior Vena Cava

**IVH:** Intraventricular Hemorrhage

**LA:** Left Atrium

**LPA:** Left Pulmonary Artery

**NICU:** Neonatal Intensive Care Unit

**NEC:** Necrotizing Enterocolitis

**PDA:** Patent Ducts Arteriosus

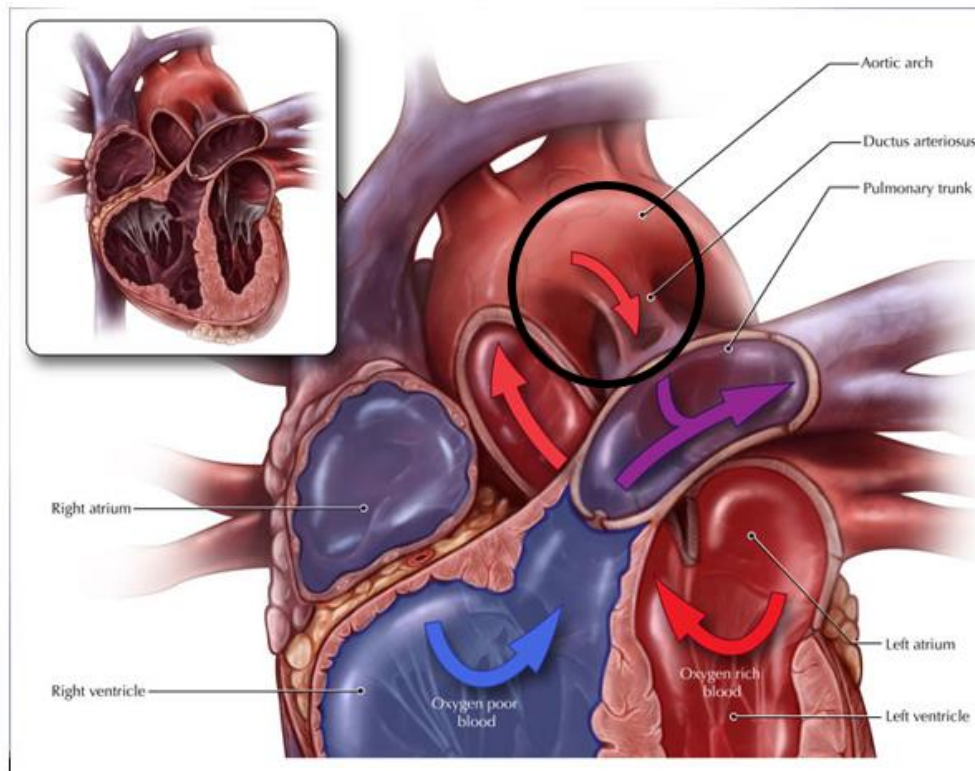
**ROP:** Retinopathy Of Prematurity

# TRANSCATHETER CLOSURE OF PATENT DUCTUS ARTERIOSUS IN EXTREMELY AND VERY PRETERM INFANTS

The Grenoble-Alpes University Hospital Experience since 2015, and the  
Comparison to the Historical Surgical Cohort of 2010-2015

## 1. INTRODUCTION

Permanent progress in neonatal medicine and care, led to an increase of very (28-32 weeks of GA) and extremely (< 28 weeks of GA) premature infants resuscitated at birth, and admitted in NICU. Among the different short and mid-term issues of the preterm infants, neonatologist often had to deal with the management of patent ductus arteriosus (PDA). In the preterm population, a PDA is defined by a failure of spontaneous closure of the ductus arteriosus (DA) within the first 72h of life.<sup>1</sup> While the DA allows the blood to be carried from the right ventricle through the aorta in the absence of functional lungs during fetal life, it generates a left-to-right shunt after birth, resulting in a pulmonary overflow and a systemic hypoperfusion (Figure 1). Although almost all full-term children spontaneously closed their ductus arteriosus within the first 96h of life, the closure failure rate increase with the prematurity.<sup>2</sup> Hence, it has been showed that only one third of premature infants weighting less than 1000g at birth, closed their ductus arteriosus within their first week of life.<sup>3</sup> However, the therapeutic approach between interventional versus conservative management of PDA in premature neonates, still remains controversial and debated.



**Figure 1.** The **ductus arteriosus** is an open vascular structure connecting the LPA near its origin to the descending aorta, resulting in a left-to-right shunt. This shunt increases with the drop of pulmonary resistances after birth, leading to pulmonary overflow and systemic hypoperfusion.<sup>4</sup>

Several studies highlighted an association between PDA and severe complications related to prematurity, such as bronchopulmonary dysplasia (BPD), intraventricular hemorrhage (IVH) or necrotizing enterocolitis (NEC).<sup>5,6</sup> This is strengthened by Noori et al. who demonstrated an eightfold increase in mortality in preterm infants with a PDA.<sup>7</sup> For many years, these findings led neonatologist to attempt the closure of PDA in premature neonates. Until recently, the two current strategies were: medical treatment with non-selective cyclo-oxygenase inhibitor (Ibuprofen or formerly Indomethacin) and lately Paracetamol<sup>8</sup>; or surgical ligation by left-thoracotomy, for refractory PDA. However, because of potential serious adverse outcomes with either medical or surgical treatment, some experts turned to a conservative approach,

waiting for a late spontaneous closure of PDA.<sup>9-11</sup> Indeed, treatment with Cox-inhibitors may be associated with renal failure, spontaneous intestinal perforation, gastrointestinal hemorrhage or disturbed cerebral circulation, even if Ibuprofen seemed to appear with better side effect profile than Indomethacin.<sup>12-14</sup> Parallely, serious morbidities after surgical ligation have been reported including vocal cord paralysis (by recurrent laryngeal nerve injury), chylothorax, pneumothorax, scoliosis, pulmonary contusion or diaphragmatic paralysis.<sup>15,16</sup> Considering all these issues, the development of percutaneous closure of PDA aims to improve the management of PDA closure on this very specific population of extremely premature infants with low birth weight. Indeed, this has been suggested to be equivalent in safety and efficacy than surgical strategy.<sup>17</sup>

Since the first transcatheter closure of PDA performed in 1966 by Portsmann et al. in a 17-year-old boy, materials and devices considerably improved with a miniaturization, to progressively allow its feasibility in smaller patients weighting less than 1000g.<sup>18</sup> However, some major concerns remains: what is the perfect timing for PDA closure ? How to prevent and avoid severe adverse events related to the procedure? Namely, is there a threshold weight below which the procedure would be too risky? In order to provide possible answers and to assess this new and innovative strategy, we reported two consecutive series of invasive PDA closures performed in very and extremely preterm infants in the Grenoble-Alpes-University Hospital. They correspond to two different strategies carried out in our center: the surgical ligation, replaced since 2015 by the transcatheter closure.

## **2. METHODS**

### **2.1. Study design**

This was an observational, monocentric, retrospective cohort study. We included all preterm infants hospitalized in the NICU of the Grenoble-Alpes University Hospital (CHUGA) who underwent invasive closure of their PDA after the failure of medical therapies, between 2010 and 2018. Since the percutaneous strategy replaced the surgical ligation in our center in 2015, we identified two different and consecutive cohorts of patients: the historical surgical cohort (between 2010-2015), and the percutaneous cohort (between 2015-2018). The analysis was limited on an eight-year period to reduce potential bias related to the evolution and the changes of neonatal intensive care.

All data were collected from medical reports, observations and operative reports. Pregnancy and delivery data were recorded, as well as demographic characteristics at birth and at the time of the closure (gestational age, weight, sex). Similarly, we collected respiratory and growth parameters before and after the PDA closure, and severe complications related to the prematurity (IVH, NEC, ROP). For percutaneous PDA closure, major complications related to the procedure included: death within 24 hours following the procedure, pericardial effusion, device migration necessitating transcatheter or surgical removal, LPA stenosis or aortic obstruction (maximal velocity  $>2\text{m/s}$  with prolonged diastolic flow measured by continuous-wave doppler). For surgical PDA ligation, major complications related to the surgery included: death within 24 hours following the surgery, intraoperative bleeding, left recurrent nerve injury, left phrenic nerve injury, chylothorax or pneumothorax.



## 2.2. Selection of patients for invasive PDA closure

All patients referred for invasive PDA closure were necessarily under ventilatory support with a large symptomatic PDA, after the failure or the contraindication of medical therapies. The first screening was performed by neonatologists, and the indication of PDA closure was confirmed by cardiologists.

Before 2015, only very symptomatic infants under maximal ventilatory support and optimal medical treatments were referred for surgical ligation. The surgery was then considered as the last intention treatment to improve respiratory and hemodynamic condition. After percutaneous strategy replaced surgery in 2015, clinical criteria for PDA closure were extended to patients with non-invasive ventilatory support dependence, when PDA was considered hemodynamically significant. In these cases, the echocardiographic assessment was crucial, and multiple echocardiographic parameters were used to assess hemodynamic consequences of PDA : the shunt size, the amount of volume overload, the degree of pulmonary overflow and the magnitude of systemic hypoperfusion (Table 1).<sup>19,20</sup>

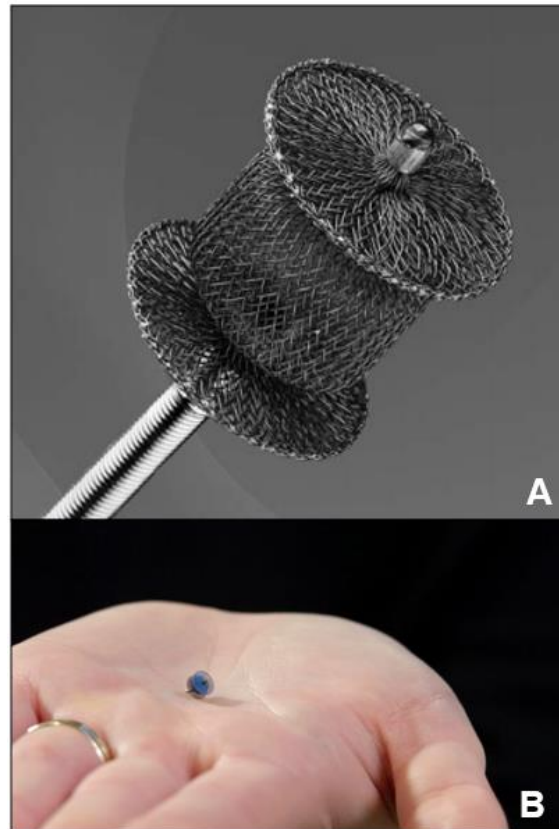
**Table 1.** Echocardiographic parameters suggesting a hemodynamic significant PDA

Parameters	
<b>Ductal characteristics:</b>	<ul style="list-style-type: none"><li>▪ A moderate to large PDA &gt; 1.5mm at the narrowest point</li><li>▪ Unrestrictive pulsatile transductal flow</li></ul>
<b>Volume Overload and Pulmonary Overflow:</b>	<ul style="list-style-type: none"><li>▪ LA:Ao ratio &gt;1.5</li><li>▪ LPA end-diastolic flow &gt; 20cm/s</li></ul>
<b>Systemic hypoperfusion:</b>	<ul style="list-style-type: none"><li>▪ Absent or reversed diastolic flow in the superior mesenteric artery and/or in the middle cerebral artery</li><li>▪ Retrograde descending aortic flow</li></ul>

*Ao: aorta; LA: left atrium; LPA: left pulmonary artery*

### 2.3. Percutaneous closure procedure

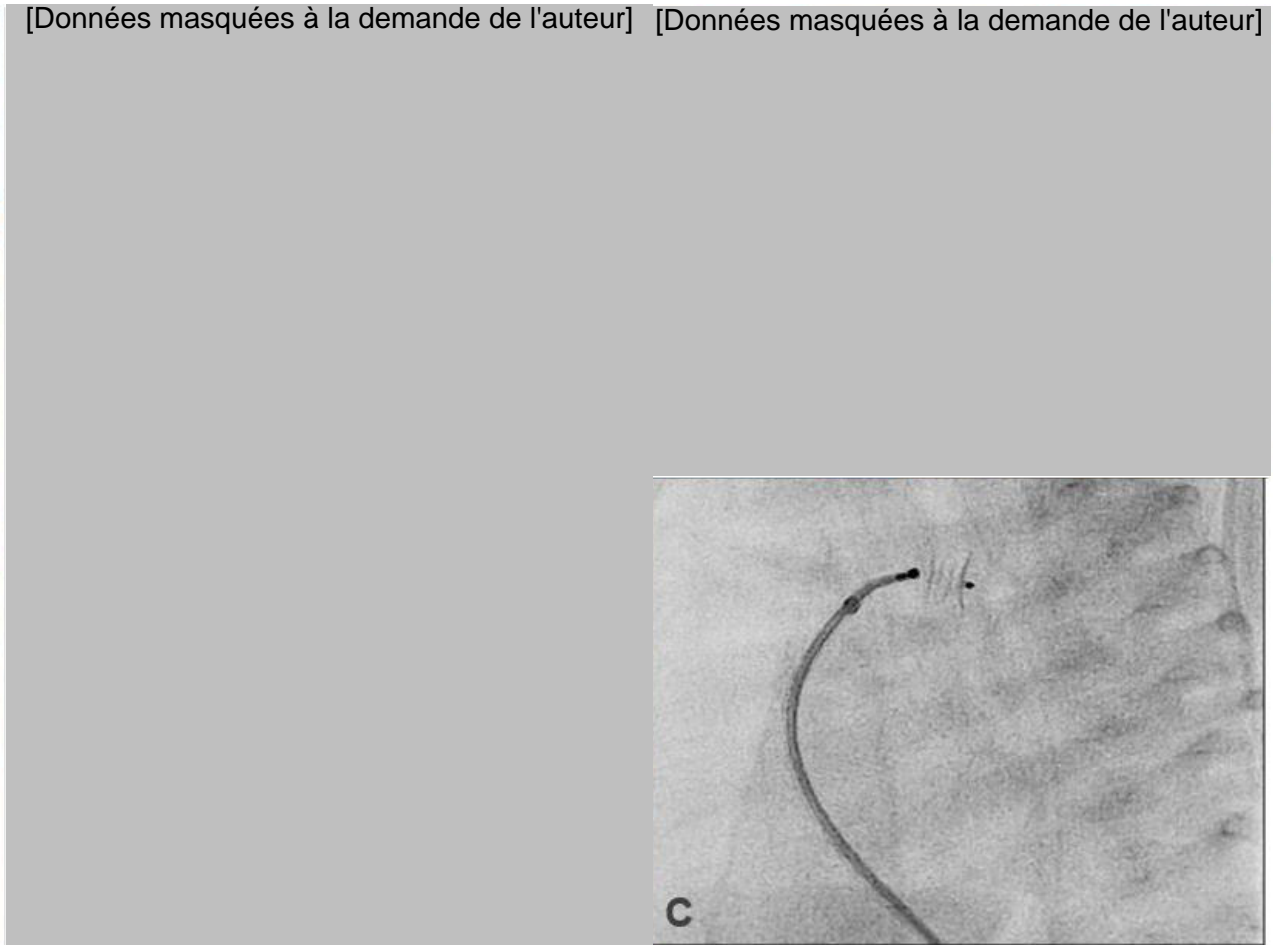
Parental consent was obtained before each procedure, after detailed information was provided about the procedure and its risks and benefits. All implanted devices were Amplatzer Duct Occluders II Additional Size (ADO-II-AS; Abbott, Menlo Park, CA), designed for percutaneous PDA closure (Figure 2A and B).<sup>21</sup>



**Figure 2. A, B.** ADO-II-AS device, constituted of two layers of braided Nitinol wire with a central waist and two symmetrical discs (1-1.5mm larger than the plug). The size of the device is defined by the central plug diameter, and by the length between both discs

Procedures were performed under general anesthesia and invasive ventilation, both necessarily initiated before the transfer to the catheterization laboratory. Neonates were laid down with a heating blanket in order to limit heat loss during the exam (Figure 3 A, B).

[Données masquées à la demande de l'auteur] [Données masquées à la demande de l'auteur]



**Figure 3 (patient 4).** **A, B.** Preparation of the neonate on the cath-laboratory for venous femoral puncture **C.** Anterograde catheterization of the PDA with deployment of the device under lateral fluoroscopy (*Photo courtesy of Dr Bedague*)

The size of the PDA as well as the transductal flow direction were systematically measured by echocardiography before the procedure. To reduce potential local complications, a single vascular access through the femoral vein was obtained with an epicranial needle, which allowed the insertion of a 4F-sheath. Then, an anterograde catheterization of the PDA from the pulmonary artery to the aorta was performed, under lateral fluoroscopy control. No angiography was done in order to preserve renal function. The device was carefully and progressively deployed from the posterior wall of the aorta to the ductus arteriosus by pulling back the delivery system (**Figure 2C**). The final release was done once after having controlled the

absence of aortic or left pulmonary obstruction under echocardiographic guidance, and felt a sufficient stability of the device. After transferring back the patient to the NICU, a chest X-ray and an echocardiography were performed to control the good position of the device and the absence of immediate complication. Then, a regular echocardiography follow-up was started: 24h after the procedure, before discharge home, at one month, and one year after the procedure (Figure 4 A and B).

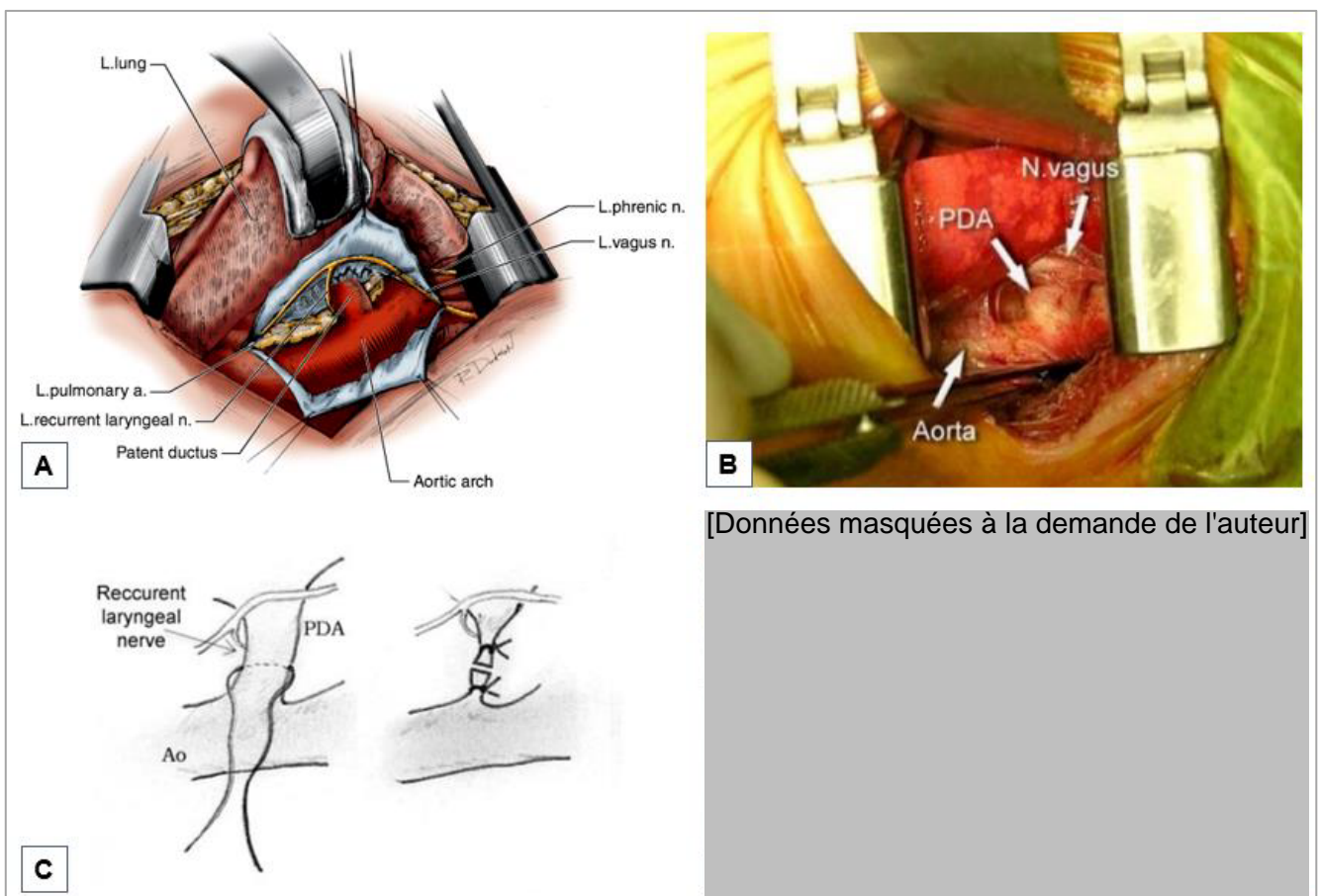


**Figure 4 (patient 5).** **A.** Chest-X ray - 6 hours after the PDA closure - showing a cardiomegaly with bilateral alveolar opacities, and a good-positioned device. **B.** Chest-X ray - one year later - showing a normal size of the heart, and normal pulmonary blood flow.

#### **2.4. Surgical closure procedure**

Similarly to the percutaneous procedure, parental consent was obtained before each PDA ligation. The surgical repair was performed under general anesthesia by a

cardiovascular surgeon, in an operating room located in the pediatric hospital. The mediastinal pleura was incised along the aorta, through left posterolateral thoracotomy via the third or the fourth intercostal space (Figure 3A, B). The DA was progressively dissected to allow the placement of a clamp behind it, and finally the DA was ligated (Figure 3C). The chest was closed with an intercostal drain left in position and generally removed 3 days after the surgery. Postoperative management of the neonate was performed in the NICU, as well as regular echocardiographic controls.



**Figure 5. Surgical ligation of a PDA.** A, B. Operative views showing the dissection of the ductus arteriosus through left posterolateral thoracotomy, as seen by the cardiac surgeon C. Surgical closure of the PDA by two ligatures with silk. D. Post-operative scar, 21 days following the surgical repair. <sup>22,23</sup>

## **2.5. Statistical analysis**

All statistical analyzes were performed with JASP (Version 9.0), a statistical program based on the R-Core. Standard descriptive statistics were calculated. Continuous variables were expressed as median and interquartile range (IQR), with *Mann-Whitney U test* to compare differences between groups. Categorical variables were expressed as counts and percentage, with *Fischer's exact test* to compare differences between groups. For all significance testing, a difference was considered significant at  $p < 0.05$ .

## **3. RESULTS**

### **3.1. Transcatheter PDA closure: the new invasive strategy**

#### **3.1.1. Demographics and preprocedural management**

Since the first procedure performed in October 2015, eleven premature infants underwent transcatheter PDA closure. Their characteristics are reported in [Table 2](#). All except one, were extremely premature infants with median weight at birth under 1000 grams. Five (45%) were females and none suffered from hypotrophy. The median maternal age was 31 years. Two mothers (18%) didn't received full antenatal corticosteroid treatment before delivery, among the six (55%) who required cesarean-section. Medical treatment for PDA closure before the procedure was tried in almost all the infants, with either Ibuprofen alone (n=8) or both Ibuprofen and Paracetamol (n=2). The one who didn't receive any medical treatment was contraindicated because of renal failure. 4/10 infants medically treated (40%) developed renal failure consecutive to the treatment.

**Table 2.** Transcatheter PDA closure: demographic and procedural characteristics

Patient	Sex	GA at birth (weeks)	BW (grams)	APGAR Score at 5min	Previous medical PDA treatment (No of cures)	2 <sup>nd</sup> ary renal failure	Age at procedure (days)	Weight at Procedure (grams)	PDA (mm)	Device	LPA stenosis	Aortic obstruction	Death < 24h or <30 days	Complication of prematurity (NEC, IVH, ROP)
1	F	25+5	800	9	Ibuprofen (2)		29	1200	Tubular 2.5x4.6	ADOIIAS 4 2			-	
2	F	27+6	1480	8	Ibuprofen (1) Paracetamol (1)		46	2300	Tubular 1.9x5.4	ADOIIAS 5 4			-	
3	F	25+3	730	9	Ibuprofen (2)		25	1050	Conic 2.2x4	ADOIIAS 4 2			-	IVH grade 3
4	F	24+6	715	3	Ibuprofen (2)	+	28	1200	Tubular 2.4x4	ADOIIAS 5 2	Transient <2 months		-	
5	M	25+2	920	10	Ibuprofen (2)		21	1180	Tubular 2.4x4	ADOIIAS 5 2			-	ROP grade 3 (laser)
6	M	27+3	785	9	Ibuprofen (2)		28	1400	Tubular 2.8x3.7	ADOIIAS 5 2		Transient <6 months	-	
7	M	26+2	940	-	Ibuprofen (2)	+	66	1800	Tubular 2.5x4.5	ADOIIAS 5 2	Transient <3 months		-	NEC (medical treatment)
8	F	24+5	580	6	Ibuprofen (1) Paracetamol (1)		91	2300	Conic 2.5x4.5	ADOIIAS 5 2			-	NEC (medical treatment)
9	M	25	650	9	Ibuprofen (2)	+	112	2990	Tubular 3.1x3.5	ADOIIAS 5 2			-	NEC (surgical treatment)
10	M	24+6	655	10	Ibuprofen (2)	+	25	1000	Tubular 3x5	ADOIIAS 5 2			-	ROP grade 3 (laser)
11	M	30	1290	7	0		42	1870	Tubular 3x5	ADOIIAS 5 2			-	
<b>Median</b>		<b>25+3</b>	<b>785</b>	<b>9</b>			<b>29</b>	<b>1400</b>						
<b>(IQR)</b>		<b>(2)</b>	<b>(350)</b>	<b>(6)</b>			<b>(35)</b>	<b>(1085)</b>						

### 3.1.2. Transcatheter intervention and follow-up

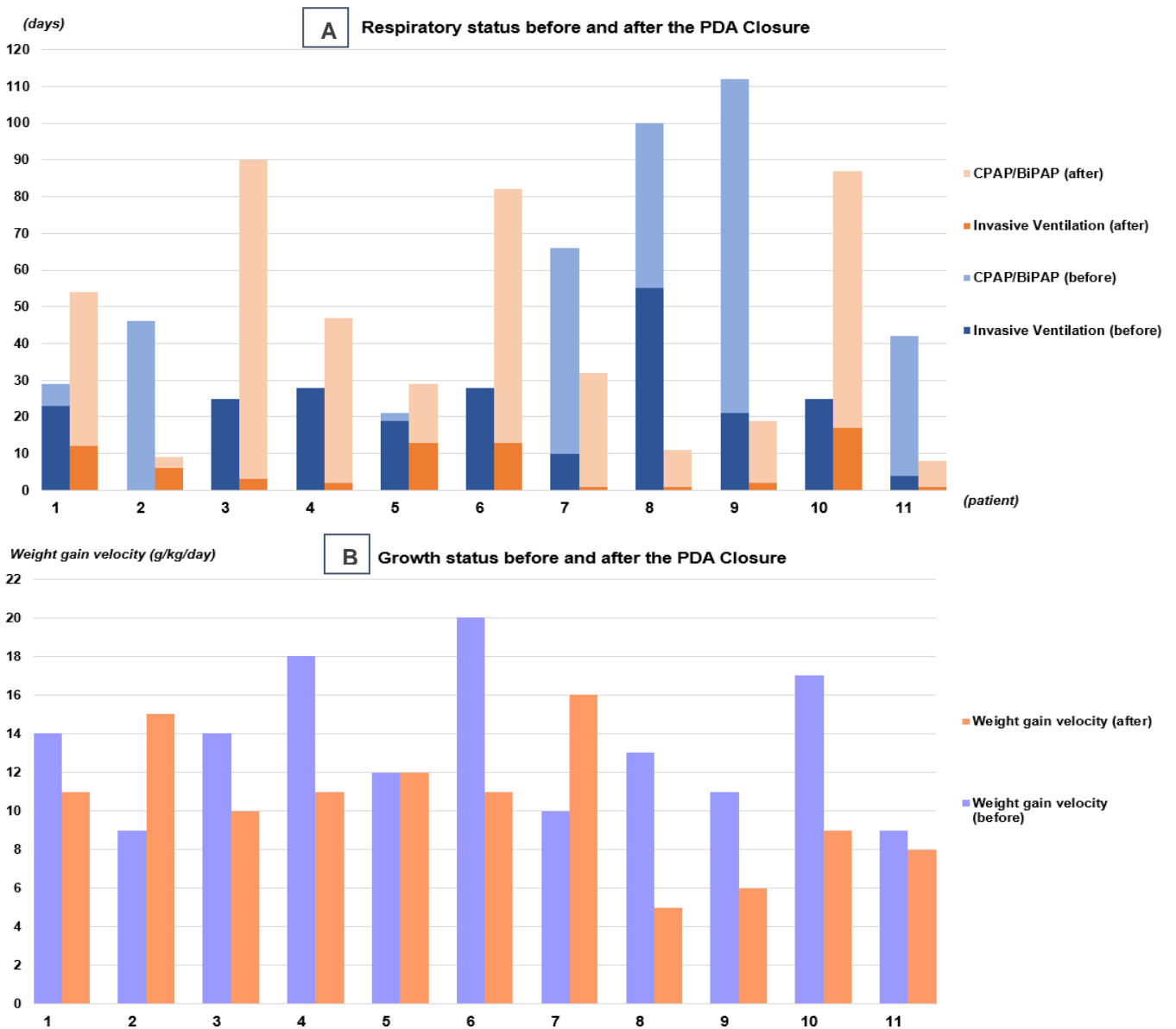
At the time of the transcatheter closure, the median age was 29 days of life (range 21-112 days), and the median weight was 1400 grams (range 1000-2990 grams). Majority of infants (n=8) weighed less than 2 kilograms, and the lowest baby weighed 1000 grams. All procedures were successful, without major complication related to the catheterization or the vascular access. There were performed under both fluoroscopic and echocardiographic guidance, with a median fluoroscopy time of 9.5 minutes. In four cases (45%) the device was unstable after the first deployment, necessitating to change for a larger device in the same procedure. No angiography was performed, except in one case, in whom 2 ml of contrast were injected into the LPA to ensure the absence of obstruction (poorly visualized by trans-thoracic echocardiography).

No death occurred within the 24 hours nor within the 30 days following the procedure, and no severe complications related to the procedure were reported. Two infants (18%) presented a transient LPA flow acceleration, and two (18%) a transient aortic flow acceleration after the release of the device, measured by continuous-wave doppler (>2m/s without prolonged diastolic flow). Those, spontaneously resolved within the third and the sixth months after the procedure respectively, with the growth of the vessels. Similarly, two babies had small residual shunt just after the procedure, that disappeared in echocardiographic controls during the first week after the closure. During follow-up, one baby died at 442 days of life (14 months), due to respiratory distress caused by bilateral stenosis of the pulmonary veins associated with supra-systemic pulmonary hypertension. The mean follow-up after the procedure was  $19 \pm 8.1$  months



### 3.1.3. Respiratory status and Weight gain

Before the procedure, six infants (55%) were under invasive ventilation whereas five infants (45%) were ventilated by CPAP or BiPAP. After the closure, babies required less invasive ventilation: median time of 3 (11) days versus 23 (12) days, ( $p=0.009$ ), **Figure 6A**.



**Figure 6A.** Comparison of modalities and duration of ventilatory support before and after the procedure (invasive ventilation  $p=0.009$ , CPAP/BiPAP  $p=0.7$ ) **B.** Comparison of weight gain velocity (g/kg/day) before and after the closure ( $p=0.17$ ). Patient 7, 8 and 9 presented NEC prior to the PDA closure, at 30, 31 and 7 days of life respectively.

Four infants (36%) still had nasal-oxygen supplement when they discharged home, indicating severe bronchopulmonary dysplasia.

The comparison of growth status before and after the procedure is presented in **Figure 6B**. There was no statistical difference between weight gain velocities ( $p=0.17$ ) after and before the PDA closure.

### **3.2. Surgical Ligation: the old strategy compared to the new**

#### **3.2.1. Before the surgery**

Since 2010, eleven premature infants underwent surgical PDA ligation by left thoracotomy. The last surgery was in 2014, just before percutaneous PDA closure program was started in our center. Characteristics of both groups are detailed in **Table 3**. The median gestational age at birth, as well as the median weight at birth were similar between groups: 26 weeks and 770 grams for surgical group versus 25.4 weeks and 785 grams for the percutaneous group). All surgical babies had previously received a medical treatment by Ibuprofen before the surgery, either one or two cycles. One presented renal failure consecutive to the treatment, and a second developed NEC two days after the beginning of the treatment.

**Table 3.** Comparison between catheter and surgical babies

<b>Parameter</b>	<b>Transcatheter PDA closure</b> n=11	<b>Surgical ligation</b> n=11	<b>p-value</b>
<b>Birth and Delivery</b>			
Gestational age (weeks)	25.4 (2.5)	26.0 (1)	0.47
Weight (grams)	785 (285)	770 (220)	0.87
Male	6 (54)	9 (82)	0.17
APGAR at 5min	9 (2)	8 (2)	0.64
Maternal age (years)	31 (4)	33 (8)	0.41
Antenatal Corticosteroids	6 (55)	5 (45)	0.84
C-Section	6 (55)	6 (55)	-
<b>Previous PDA medical treatment</b>			
Ibuprofen and/or Paracetamol	10 (91)	11 (100)	0.31
Side effect	4 (36)	2 (18)	0.34
<b>At procedure</b>			
Days of life (days)	29 (41)	25 (18)	0.17
Weight (grams)	1400 (1120)	1225 (410)	0.21
Weight gain velocity (g/kg/d)	13 (7)	13 (2)	1
On diuretics	6 (55)	11 (100)	0.01
On Invasive ventilation	6 (55)	10 (91)	0.056
<b>After the procedure</b>			
Mechanical ventilation (days)	3 (12)	9 (12)	0.052
CPAP (days)	31 (59)	28 (40)	0.9
Number of IV feeding days	10 (20)	16 (15)	0.32
Weight gain velocity (g/kg/d)	11 (3)	11 (3)	0.42
Total Mechanical ventilation (days)	30 (11)	36 (14)	0.1
On O <sub>2</sub> at discharge	5 (45)	7 (64)	0.39
Death < 24h	0	0	-
Death < 30 days	0	0	-
Prolongated Invasive Ventilation Morbidity	0	6 (55)	0.012

*Values are expressed as Median (Interquartile Range) or Number (%)*

*IV: intravenous*

### 3.2.2. At the time of surgical PDA ligation

Although babies seemed younger (25 days versus 29 days of life;  $p=0.17$ ) and with a smaller weight (1225 grams versus 1400 grams;  $p=0.21$ ) at the time of the surgical ligation compared to the transcatheter group, there was no statistical difference between groups. At the time of the surgery, ten infants (91%) were under invasive ventilation and all were on diuretics, whereas they were only six (55%) under both invasive ventilation and diuretic medication in the catheter group ( $p=0.056$  and  $p=0.01$  respectively).

### 3.2.3. Surgical complications and follow-up

Median follow-up after the surgery was 4.7 years. No death occurred within the 30 days after the PDA ligation. However, all infants necessitated blood transfusion the 24 hours following the surgery among which one required urgent transfusion during the procedure due to severe hemorrhage. One developed severe pneumopathy the days following the surgery necessitating 36 hours of HFO, and one presented a left vocal cord paralysis confirmed by laryngoscopy during the follow-up.

The median duration of invasive ventilation after surgical ligation was 9 days versus 3 days after percutaneous closure ( $p=0.052$ ). The morbidity related to prolonged invasive ventilation was higher: 6/11 versus 0/11,  $p=0.012$ . One baby presented subglottic stenosis requiring surgery repair, one had late ankylosis of the vocal cords with dysphony, and four babies were under long-term enteral feeding when discharged home (in the absence of NEC). Finally, seven babies (64%) had nasal-oxygen supplement at their discharge from hospital.

## **4. DISCUSSION**

### **4.1. Percutaneous vs surgical closure: Is there a better choice?**

Since the beginning of percutaneous PDA closure program in preterm infants in our center, this innovative technique replaced the surgical strategy, which still remains the only invasive option for PDA closure in many other French centers. The choice of this new strategy was collegially made in 2015 between cardiologists, neonatologists and anesthetists, after first encouraging results of the Reims team led by Pr Morville.<sup>24</sup> Importantly, our initial experience with transcatheter closure included a period of learning-curve. However, all procedures were successful and no major complication occurred. Rather, the post-procedural morbidity was higher in the surgical group with 6/11 infants who presented complications related to invasive ventilation, whereas none were reported in the catheter group ( $p=0.012$ ). This is consistent with our results showing a trend to decreased invasive ventilation time after percutaneous procedure compared to surgery (median time 3 days versus 9 days,  $p=0.052$ ).

Although two recent studies aimed to compare both strategies for PDA closure in preterm infants, their conclusions were limited by several differences between groups at the time of the PDA closure (age, weight and gestational age).<sup>25,26</sup> Even if a largest retrospective study with matching groups would bring more arguments to reinforce the position for percutaneous closure, our positive results support our choice for the interventional strategy.

Beyond the simple change of the technique, this study also shows that the choice for interventional approach led to a global change in the invasive PDA closure management in preterm infants in our center. Indeed, we progressively shifted into a

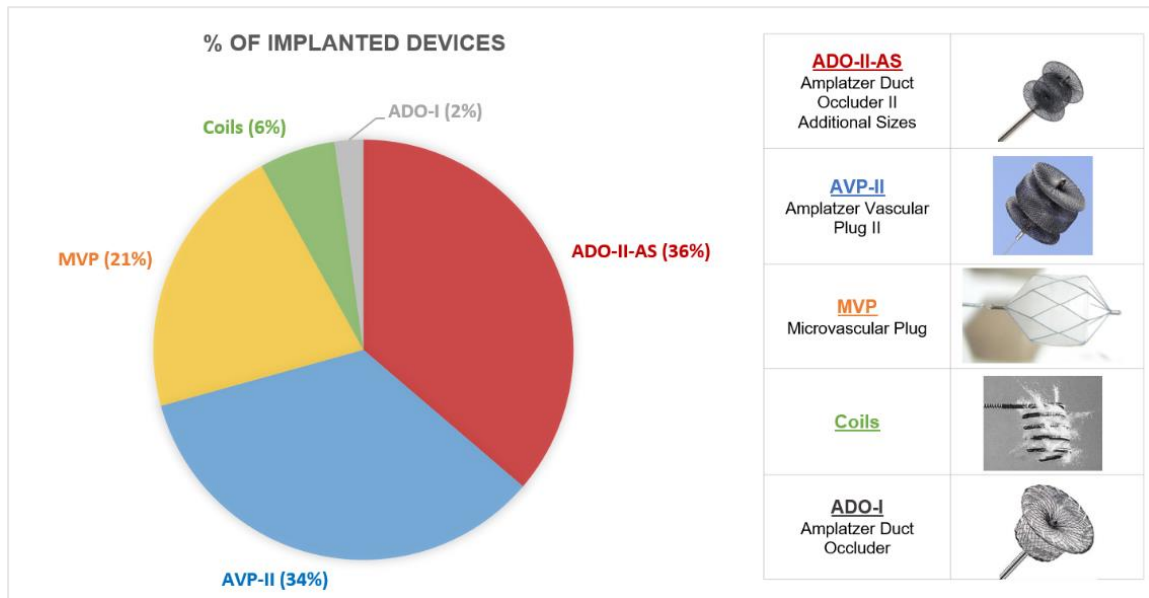
more proactive than curative strategy. While almost all infants referred for surgery were under invasive ventilation and diuretics, there were just above half of them in the catheter group. Probably because of the high perioperative morbidity, the surgical ligation was proposed for more severe infants who were under optimal medical treatment and ventilatory support. PDA ligation was then considered to be the last intention treatment to improve respiratory and hemodynamical condition. However, in the catheter group, 5/11 infants were only dependent of CPAP or BiPAP. For those, PDA closure was performed to optimize their respiratory condition, limit the severity of BDP and prevent enteral complications, but almost certainly, they would not have been candidates for surgery. In some ways, this reflects the progress in the peri- and postnatal management of very and extremely preterm neonates during the last decade. Neonatologists are nowadays more proactive toward this new interventional strategy.

#### **4.2. Transcatheter PDA closure: Is there a limit weight?**

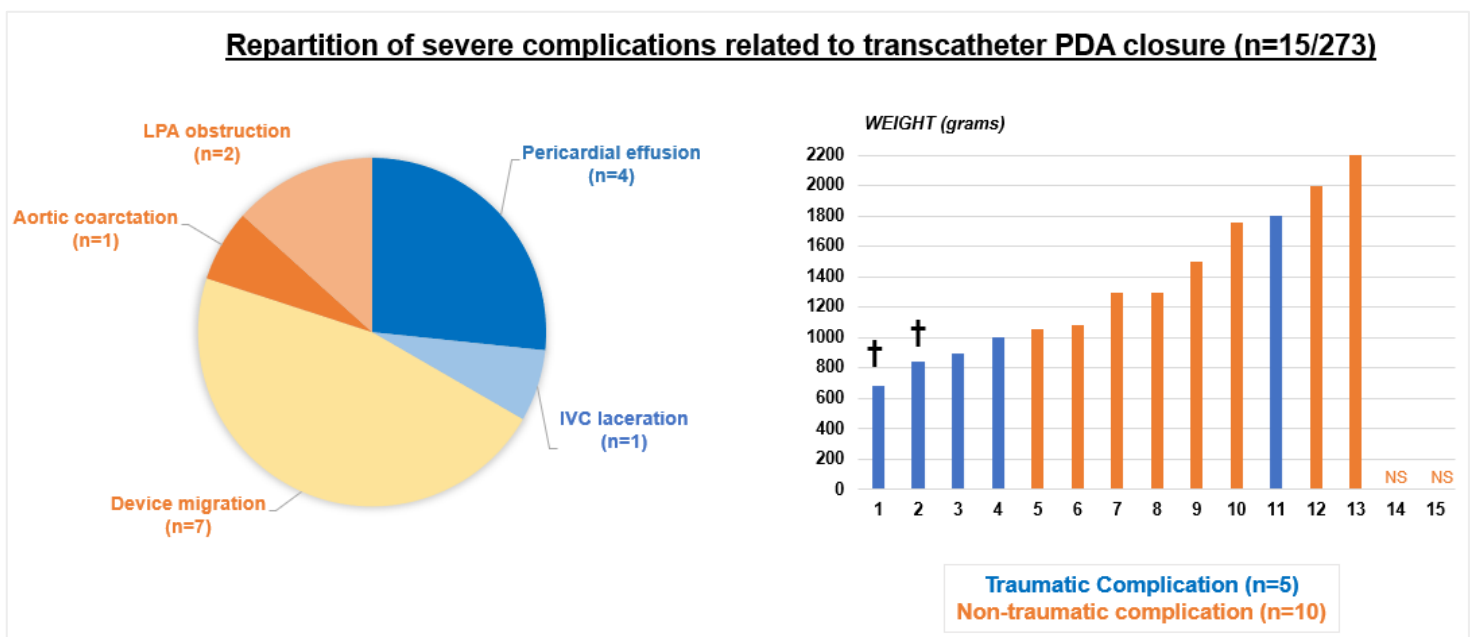
One of the main concerns about the transcatheter PDA closure, is to determine a limit of weight below which risks related to the procedure would exceed benefits. In order to provide possible answers, we analyzed a total of 273 percutaneous PDA closure procedures performed in preterm infants weighing less than 4kg (Table 4).<sup>24,25,27-34</sup> The Figure 7 illustrated the repartition of different implanted devices among the 273 procedures.

Reassuringly, only 15 severe complications were reported out of the 273 procedures (5.5%), among which two were lethal (0.07%). Both deaths occurred in babies weighing less than 1000 grams, and were caused by traumatic injuries: right ventricle

perforation with a 4F vertebral catheter (680 grams), and IVC laceration during the sheath exchange (840 grams).<sup>31,33</sup> In the 13/15 complications for which a weight was reported, the median weight was 1300 grams (Figure 8).



**Figure 7.** Repartition of different implanted devices for PDA closure among 273 procedures performed in preterm infants weighing less than 4kg at the procedure<sup>24,25,27-3</sup> While the ADO-II-AS obtained CE mark in 2011, the FDA approval dated from January 2019.



**Figure 8.** Repartition of the 15 severe complications related to transcatheter PDA closure reported among 273 procedures (n=15/273)<sup>24,25,27-33</sup>. NS: non-specified; †: death

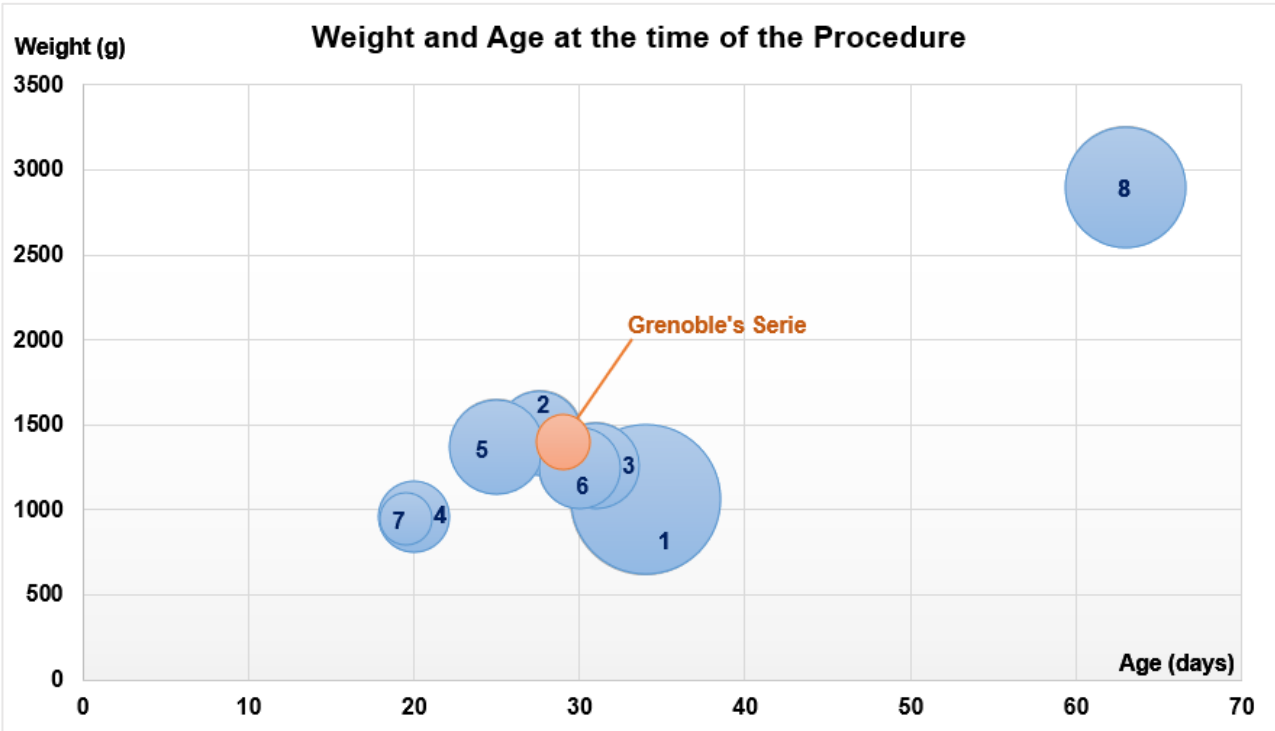
**Table 4.** Series of transcatheter PDA closures in premature infants weighing less than 4kg

	Author (Country)	Period of study	n	Age at procedure (days of life) *	Weight at procedure (g) *	Device	Arterial access	Major complication	Transient LPA or aortic stenosis (<6 months)
1	Sathanandam et al. (US)	2014 (Aug) 2017 (Dec)	80	34 (14-78)	1060 (640-2000)	AVP-II (22) MVP (58)	+	2 ▪ Pericardial drainage (n=1; <b>900g</b> ) ▪ <b>Death</b> by laceration of the IVC during sheath exchange (n=1; <b>840g</b> )	4 LPA
2	Pamukcu (Turkish)	2012 (March) 2014 (Oct)	26	27.6 ±18	1455 (967-1770)	ADO-I (1) ADO-II-AS (25)	+	4 ▪ Device migration (n=2, one retrieved during procedure <b>2000g</b> , one by surgery <b>1760g</b> ) ▪ Aortic coarctation (n=1, surgery removal <b>1500g</b> ) ▪ Perforation of the right atrium (n=1, surgery repair <b>1000g</b> )	2 LPA
3	Rodriguez Orgando et al. (Spain)	2011 (Jan) 2016 (Dec)	27	31 (17-87)	1260 (100-1980)	ADO-II-AS		3 ▪ Device migration (n=2, <b>1080g</b> and <b>1300g</b> ) ▪ Pericardial effusion (n=1, <b>1800g</b> )	
4	Morville et al. (France)	2013 (Sept) 2016 (Sept)	18	20 ±10	962±169	ADO-II-AS		<i>Same as previous the series (n=14 were similar)</i>	1 LPA
5	Morville et al. (France)	2013 (Sept) 2015 (June)	32	25 (25-70)	1373±535	ADO-II-AS		2 ▪ LPA obstruction (n=1, surgically removed 1 month later <b>1060g</b> ) ▪ Pericardial tamponade by perforation of the right ventricle, <b>Death</b> (n=1, <b>680g</b> )	2 LPA
6	Zahn et al. (US)	2013 (March) 2015 (Febr)	24	30 (5-80)	1249 (755-2240)	AVP-II		1 ▪ LPA stenosis (n=1, stenting of the LPA 3 months later, <b>1300g</b> )	2 Aortic
7	Narin et al. (Turkey)	2014 (June) 2016 (June)	10	19.5 ±7.2	950 (842-983)	ADO-II-AS	+	0	2 LPA
8	Backes et al. (US)	2015 (Jan) 2014 (Jan)	52	63 (29-91)	2900 (1200-3900)	ADO-I (4) AVP-II (48)	+	3 ▪ Device migration (n=3, one surgically removed, <b>2200g</b> and two retrieved during the procedure) 6 ▪ Arterial vascular complication (n=6, prolonged anticoagulation treatment)	3 LPA 1 Aortic
9	Francis et al. (India)	2002 (Jan) 2008 (Aug)	8	NS	1100 (930-1800)	Coils	+	0	NS
10	Roberts et al. (UK)	Before 2006 (July)	10	NS	2200±NS	Coils (8) ADO (1)	+	0	2 LPA

\*As median (range) or mean±SD.



Compared to other series (excepted the *Sathanandam et al.* cohort), our patients were quite comparable in weight and age at the time of the procedure, but none weighted less than 1000 grams (Figure 9). The absence of severe complication among our eleven procedures demonstrate promising results and a high expertise of the technique in our center. However, caution must be observed especially with babies under 1000 grams, who seem to be the ones most at risk of serious and potential lethal complications, in view of all the results.



**Figure 9.** Grenoble’s series vs. 10 series: Weight & Age at procedure (median age 29 days, median weight 1400g)

*Numbering refers to series reported in Table 4.*

### **4.3. Is there an optimal timing for invasive PDA the closure?**

Even though the invasive strategy is still controversial, we don't know if there is an optimal timing to propose invasive PDA closure in preterm infants after the failure of medical therapies. When surgery was the only option, its high periprocedural morbidity led neonatologists to wait spontaneous DA closure or attempt several courses of Ibuprofen before referring patients for surgical ligation. The development of the percutaneous strategy could lead to a change in practices, and propose early invasive PDA closure, before 15 days of life.

Indeed, one of major interests to propose early PDA closure would be to avoid, or at least to limit the consequences of pulmonary shear-stress and overflow (caused by the left-to-right shunt), known to be one of the main mechanisms implied in the pathophysiology of BPD.<sup>35</sup> As symptoms related to BDP begin at the third week of life, the objective would be to close the PDA before the early stage of the disease. Additionally, PDA closure early in life would also limit the systemic hypoperfusion and therefore, reduce the risk of NEC.

In a Korean retrospective study, two cohorts of preterm infants who underwent either early (<15 days) or late (>15 days) surgical PDA ligation were compared.<sup>36</sup> They showed that early PDA ligation reduce the rate of NEC and the time under parenteral nutrition. As we demonstrated lower periprocedural morbidity and lower time under invasive ventilation after percutaneous PDA closure compared to surgery, we can assume that percutaneous procedure would bring both digestive and respiratory benefits with an early closure. In order to confirm this hypothesis, and maybe change the mid and long-term prognosis of preterm infants with large PDA, we propose to compare both early (<15 days) and late (>15 days) percutaneous PDA closure strategies in preterm infants, in a longitudinal and prospective and randomized study.

## **5. CONCLUSION**

Our study demonstrates that percutaneous strategy for invasive PDA closure in preterm infants appears as effective as surgery at short- and mid-term follow-up, with very low rate of periprocedural complications. Moreover, the global management of invasive PDA closure changed into a more proactive than curative approach. These results are consistent with the literature and suggest that the benefit/risk balance seems actually favorable for the percutaneous strategy beyond 1000 grams.

As with all new innovative and invasive procedure, continuous caution must be observed, especially regarding the risks related to the progressive lower weight of infants at the time of the procedure. Parents must receive a complete, detailed and update information about the procedure and its risks.

Feasibility of a randomized study seems difficult, but national and international registries are in progress, and they will probably help to better define benefit/risks of the procedure and its outcomes.

## 6. REFERENCES

1. Dice JE, Bhatia J. Patent Ductus Arteriosus: An Overview. 2007;12(3):9.
2. Furzan JA, Reisch J, Tyson JE, Laird P, Rosenfeld CR. Incidence and risk factors for symptomatic patent ductus arteriosus among inborn very-low-birth-weight infants. *Early Hum Dev.* 1985;12(1):39-48. doi:10.1016/0378-3782(85)90135-5
3. Koch J. Prevalence of Spontaneous Closure of the Ductus Arteriosus in Neonates at a Birth Weight of 1000 Grams or Less. *PEDIATRICS.* 2006;117(4):1113-1121. doi:10.1542/peds.2005-1528
4. Treating Patent Ductus Arteriosus in Neonates: Evaluating Current Therapies. Medscape. <http://www.medscape.org/viewarticle/825399>. Accessed January 21, 2019.
5. Evans N, Kluckow M. Early ductal shunting and intraventricular haemorrhage in ventilated preterm infants. *Arch Dis Child - Fetal Neonatal Ed.* 1996;75(3):F183-F186. doi:10.1136/fn.75.3.F183
6. Dollberg S, Lusky A, Reichman B. Patent Ductus Arteriosus, Indomethacin and Necrotizing Enterocolitis in Very Low Birth Weight Infants: A Population-Based Study: *J Pediatr Gastroenterol Nutr.* 2005;40(2):184-188. doi:10.1097/00005176-200502000-00019
7. Noori S, McCoy M, Friedlich P, et al. Failure of Ductus Arteriosus Closure Is Associated With Increased Mortality in Preterm Infants. *PEDIATRICS.* 2009;123(1):e138-e144. doi:10.1542/peds.2008-2418
8. Ohlsson A, Shah PS. Paracetamol (acetaminophen) for patent ductus arteriosus in preterm or low birth weight infants. Cochrane Neonatal Group, ed. *Cochrane Database Syst Rev.* April 2018. doi:10.1002/14651858.CD010061.pub3
9. Laughon MM, Simmons MA, Bose CL. Patency of the ductus arteriosus in the premature infant: is it pathologic? Should it be treated?: *Curr Opin Pediatr.* 2004;16(2):146-151. doi:10.1097/00008480-200404000-00005
10. Mohamed MA, El-Dib M, Alqahtani S, Alyami K, Ibrahim AN, Aly H. Patent ductus arteriosus in premature infants: to treat or not to treat? *J Perinatol.* 2017;37(6):652-657. doi:10.1038/jp.2017.4
11. Semberova J, Sirc J, Miletin J, et al. Spontaneous Closure of Patent Ductus Arteriosus in Infants  $\leq$ 1500 g. *Pediatrics.* 2017;140(2):e20164258. doi:10.1542/peds.2016-4258
12. Sivanandan S, Agarwal R. Pharmacological Closure of Patent Ductus Arteriosus: Selecting the Agent and Route of Administration. *Pediatr Drugs.* 2016;18(2):123-138. doi:10.1007/s40272-016-0165-5
13. Ohlsson A, Walia R, Shah SS. Ibuprofen for the treatment of patent ductus arteriosus in preterm or low birth weight (or both) infants. Cochrane Neonatal

Group, ed. *Cochrane Database Syst Rev*. February 2015.  
doi:10.1002/14651858.CD003481.pub6

14. Fanos V, Benini D, Verlato G, Errico G, Cuzzolin L. Efficacy and renal tolerability of ibuprofen vs. indomethacin in preterm infants with patent ductus arteriosus. *Fundam Clin Pharmacol*. 2005;19(2):187-193. doi:10.1111/j.1472-8206.2004.00314.x
15. Mandhan P, Brown S, Kukkady A, Samarakkody U. Surgical Closure of Patent Ductus Arteriosus in Preterm Low Birth Weight Infants. *Congenit Heart Dis*. 2009;4(1):34-37. doi:10.1111/j.1747-0803.2008.00241.x
16. Lehenbauer DG, Fraser CD, Crawford TC, et al. Surgical Closure of Patent Ductus Arteriosus in Premature Neonates Weighing Less Than 1,000 grams: Contemporary Outcomes. *World J Pediatr Congenit Heart Surg*. 2018;9(4):419-423. doi:10.1177/2150135118766454
17. Abu Hazeem AA, Gillespie MJ, Thun H, et al. Percutaneous closure of patent ductus arteriosus in small infants with significant lung disease may offer faster recovery of respiratory function when compared to surgical ligation: Percutaneous Closure of PDA in Small Infants. *Catheter Cardiovasc Interv*. June 2013:n/a-n/a. doi:10.1002/ccd.25032
18. Baruteau A-E, Hascoët S, Baruteau J, et al. Transcatheter closure of patent ductus arteriosus: Past, present and future. *Arch Cardiovasc Dis*. 2014;107(2):122-132. doi:10.1016/j.acvd.2014.01.008
19. Shepherd JL, Noori S. What is a hemodynamically significant PDA in preterm infants? *Congenit Heart Dis*. December 2018. doi:10.1111/chd.12727
20. Arlettaz R. Echocardiographic Evaluation of Patent Ductus Arteriosus in Preterm Infants. *Front Pediatr*. 2017;5. doi:10.3389/fped.2017.00147
21. Kenny D, Morgan GJ, Bentham JR, et al. Early clinical experience with a modified amplatzer ductal occluder for transcatheter arterial duct occlusion in infants and small children: Transcatheter Arterial Duct Occlusion. *Catheter Cardiovasc Interv*. June 2013:n/a-n/a. doi:10.1002/ccd.24522
22. Valentík P, Omeje I, Poruban R, Šagát M, Nosál M. Surgical closure of patent ductus arteriosus in pre-term babies. *Images Paediatr Cardiol*. 2007;9(2):27-36.
23. Lamar Twinners: Day 21: PDA ligation.  
<http://lamartwinners.blogspot.com/2009/11/day-21-pda-ligation.html>. Accessed February 5, 2019.
24. Morville P, Akhavi A. Transcatheter closure of hemodynamic significant patent ductus arteriosus in 32 premature infants by amplatzer ductal occluder additional size-ADOIIAS: Closure of Ductus Arteriosus in Premature Infants with ADOIIAS. *Catheter Cardiovasc Interv*. 2017;90(4):612-617. doi:10.1002/ccd.27091

25. Pamukcu O, Tuncay A, Narin N, et al. Patent Ductus Arteriosus closure in preterms less than 2 kg: Surgery versus transcatheter. *Int J Cardiol.* 2018;250:110-115. doi:10.1016/j.ijcard.2017.10.020
26. Rodríguez Ogando A, Planelles Asensio I, de la Blanca ARS, et al. Surgical Ligation Versus Percutaneous Closure of Patent Ductus Arteriosus in Very Low-Weight Preterm Infants: Which are the Real Benefits of the Percutaneous Approach? *Pediatr Cardiol.* 2018;39(2):398-410. doi:10.1007/s00246-017-1768-5
27. Francis E, Singhi AK, Lakshmivenkateshaiah S, Kumar RK. Transcatheter Occlusion of Patent Ductus Arteriosus in Pre-Term Infants. *JACC Cardiovasc Interv.* 2010;3(5):550-555. doi:10.1016/j.jcin.2010.01.016
28. Backes CH, Cheatham SL, Deyo GM, et al. Percutaneous Patent Ductus Arteriosus (PDA) Closure in Very Preterm Infants: Feasibility and Complications. *J Am Heart Assoc.* 2016;5(2). doi:10.1161/JAHA.115.002923
29. Narin N, Pamukcu O, Baykan A, Sunkak S, Ulgey A, Uzum K. Percutaneous PDA Closure in Extremely Low Birth Weight Babies: PDA CLOSURE <1,000 gr. *J Intervent Cardiol.* 2016;29(6):654-660. doi:10.1111/joic.12352
30. Zahn EM, Peck D, Phillips A, et al. Transcatheter Closure of Patent Ductus Arteriosus in Extremely Premature Newborns. *JACC Cardiovasc Interv.* 2016;9(23):2429-2437. doi:10.1016/j.jcin.2016.09.019
31. Morville P, Douchin S, Bouvaist H, Dauphin C. Transcatheter occlusion of the patent ductus arteriosus in premature infants weighing less than 1200 g. *Arch Dis Child - Fetal Neonatal Ed.* 2018;103(3):F198-F201. doi:10.1136/archdischild-2016-312582
32. Rodríguez Ogando A, Ballesteros Tejerizo F, Blanco Bravo D, Sánchez Luna M, Zunzunegui Martínez JL. Transcatheter Occlusion of Patent Ductus Arteriosus in Preterm Infants Weighing Less Than 2 kg With the Amplatzer Duct Occluder II Additional Sizes Device. *Rev Esp Cardiol Engl Ed.* 2018;71(10):865-866. doi:10.1016/j.rec.2017.08.014
33. Sathanandam S, Balduf K, Chilakala S, et al. Role of Transcatheter patent ductus arteriosus closure in extremely low birth weight infants. *Catheter Cardiovasc Interv.* 2019;93(1):89-96. doi:10.1002/ccd.27808
34. Roberts P, Adwani S, Archer N, Wilson N. Catheter closure of the arterial duct in preterm infants. *Arch Dis Child - Fetal Neonatal Ed.* 2007;92(4):F248-F250. doi:10.1136/ad.2005.078600
35. Jobe AH, Steinhorn R. Can We Define Bronchopulmonary Dysplasia? *J Pediatr.* 2017;188:19-23. doi:10.1016/j.jpeds.2017.06.064
36. Lee JH, Ro SK, Lee HJ, et al. Surgical Ligation on Significant Patent Ductus Arteriosus in Very Low Birth Weight Infants: Comparison between Early and Late Ligations. *Korean J Thorac Cardiovasc Surg.* 2014;47(5):444-450. doi:10.5090/kjtcs.2014.47.5.444

THÈSE SOUTENUE PAR : AURIAU Johanne

**TITRE : Fermeture percutanée du Canal artériel Persistant Chez le Grand et Très Grand Prématuré**

*Expérience du CHU de Grenoble depuis 2015 et comparaison à la cohorte historique chirurgicale de 2010-2015*

**Introduction :** La stratégie de fermeture invasive du canal artériel persistant du prématuré après échec des thérapeutiques médicamenteuses reste un sujet controversé. Alors que la ligature chirurgicale est la technique de référence, la fermeture percutanée se développe en France depuis 2014 comme alternative. Nous proposons d'analyser la cohorte des prématurés ayant nécessité une fermeture invasive du canal artériel au CHUGA entre 2010 et 2018. L'objectif est d'analyser et de comparer efficacité et sécurité des deux stratégies sur les périodes 2010-2015 (fermeture chirurgicale) et 2015-2018 (fermeture percutanée).

**Méthodes :** Il s'agit d'une étude monocentrique, rétrospective. La base informatique du CHUGA a permis d'identifier 22 enfants très grands (< 28 SA) et grands (28-32 SA) prématurés traités entre 2010 et 2018. Les données démographiques à la naissance et au moment de la procédure, les modalités et durées de ventilation avant et après fermeture du canal artériel, ainsi que les complications liées à la procédure et à la prématurité ont été recueillies à partir de l'observation médicale et des comptes rendus opératoires. Ces données ont été ensuite comparées aux résultats de la littérature.

**Résultats :** Entre 2010 et 2015, 11 canaux artériels persistants ont été fermés par voie chirurgicale, (ligature par thoracotomie latérale) puis de façon consécutive, entre 2015 et 2018, 11 ont été fermés par voie veineuse percutanée (abord fémoral 4French - prothèse ADOII-Abbott®). L'âge et le poids médian des patients à la naissance était comparable dans les deux groupes : 25.4 SA et 785 g dans le groupe percutané versus 26 SA et 770 g dans le groupe chirurgical ;  $p=0.47$  et  $0.87$  respectivement). Au moment de la procédure, l'âge et le poids médian était de 29 jours et 1400 g dans le groupe percutané versus 25 jours et 1225 g dans le groupe chirurgical ( $p=0.17$  et  $p=0.21$  respectivement). Seuls 6/11 patients étaient sous ventilation mécanique avant la procédure percutanée contre 10/11 avant la chirurgie. La durée médiane de ventilation mécanique après la fermeture du canal était de 3 jours dans le groupe percutané contre 9 jours dans le groupe chirurgical ( $p=0.052$ ). On ne déplore aucun décès lié aux procédures dans notre population. La morbidité liée à la ventilation prolongée était toutefois plus importante dans le groupe chirurgical que dans le groupe interventionnel : 6/11 versus 0/11,  $p=0.012$ .

**Conclusion :** Il apparaît que dans notre centre la fermeture percutanée du canal artériel est aussi efficace que la ligature chirurgicale à court et moyen terme, avec un très faible taux de complication per et post-procédure et une diminution de la morbidité liée à la ventilation. Ces données sont concordantes avec celle de la littérature. Au regard de l'ensemble de ces données, la balance bénéfique/risque semble actuellement favorable pour la stratégie percutanée au-delà de 1000 grammes. La faisabilité d'une étude randomisée paraît complexe, les données des registres nationaux et internationaux en cours, permettront de préciser le rapport bénéfice-risque de chacune des techniques et ses déterminants.

VU ET PERMIS D'IMPRIMER

Grenoble, le :

20/02/19  
LE DOYEN

Pour le Président  
et par délégation

—  
Le Doyen de Médecine  
Pr. Patrice MORAND

Pr. Patrice MORAND

LE PRÉSIDENT DE LA THÈSE

Pr. G. VANZETTO  
Soins Intensifs et Urgences Cardiológicas  
Clinique Universitaire de Cardiologie

CHU de GRENOBLE  
RPPS 10002991254

Pr. Gérald Vanzetto