



HAL
open science

Safety and long term efficacy of radiofrequency ablation for lung tumors

Jean-Baptiste Sautiere

► **To cite this version:**

Jean-Baptiste Sautiere. Safety and long term efficacy of radiofrequency ablation for lung tumors. Human health and pathology. 2018. dumas-02099993

HAL Id: dumas-02099993

<https://dumas.ccsd.cnrs.fr/dumas-02099993>

Submitted on 15 Apr 2019

HAL is a multi-disciplinary open access archive for the deposit and dissemination of scientific research documents, whether they are published or not. The documents may come from teaching and research institutions in France or abroad, or from public or private research centers.

L'archive ouverte pluridisciplinaire **HAL**, est destinée au dépôt et à la diffusion de documents scientifiques de niveau recherche, publiés ou non, émanant des établissements d'enseignement et de recherche français ou étrangers, des laboratoires publics ou privés.

UNIVERSITÉ de CAEN NORMANDIE

FACULTÉ de MÉDECINE

Année 2017/2018

THÈSE POUR L'OBTENTION
DU GRADE DE DOCTEUR EN MÉDECINE

Présentée et soutenue publiquement le : 18 octobre 2018

par

M SAUTIERE Jean-Baptiste

Né le 5 mai 1989 à Croix (Nord)

**SAFETY AND LONG TERM EFFICACY OF RADIOFREQUENCY
ABLATION FOR LUNG TUMORS**

Président : Monsieur le Professeur PELAGE Jean-Pierre

Membres : Monsieur le Professeur BERGOT Emmanuel

Monsieur le Professeur DAO Manh Thông

Monsieur Docteur OULKHOUIR Youssef

Directeur de thèse : Pr PELAGE Jean-Pierre

Année Universitaire 2017 / 2018**Doyen**

Professeur Emmanuel TOUZÉ

Assesseurs

Professeur Paul MILLIEZ (pédagogie)

Professeur Guy LAUNOY

Professeur Sonia DOLLFUS & Professeur Evelyne Emery (3^{ème} cycle)**Directrice administrative**

Madame Sarah CHEMTOB

PROFESSEURS DES UNIVERSITÉS - PRATICIENS HOSPITALIERS

M.	AOUBA Achille	Médecine interne
M.	AGOSTINI Denis	Biophysique et médecine nucléaire
M.	AIDE Nicolas	Biophysique et médecine nucléaire
M.	ALLOUCHE Stéphane	Biochimie et biologie moléculaire
M.	ALVES Arnaud	Chirurgie digestive
M.	BABIN Emmanuel	Oto-Rhino-Laryngologie
M.	BÉNATEAU Hervé	Chirurgie maxillo-faciale et stomatologie
M.	BENOIST Guillaume	Gynécologie - Obstétrique
M.	BERGER Ludovic	Chirurgie vasculaire
M.	BERGOT Emmanuel	Pneumologie
M.	BIBEAU Frédéric	Anatomie et cytologie pathologique
Mme	BRAZO Perrine	Psychiatrie d'adultes
M.	BROUARD Jacques	Pédiatrie
M.	BUSTANY Pierre	Pharmacologie
Mme	CHAPON Françoise	Histologie, Embryologie
Mme	CLIN-GODARD Bénédicte	Médecine et santé au travail
M.	COQUEREL Antoine	Pharmacologie
M.	DAO Manh Thông	Hépatologie-Gastro-Entérologie
M.	DAMAJ Ghandi Laurent	Hématologie
M.	DEFER Gilles	Neurologie
M.	DELAMILLIEURE Pascal	Psychiatrie d'adultes
M.	DENISE Pierre	Physiologie
M.	DERLON Jean-Michel	Neurochirurgie
Mme	DOLLFUS Sonia	Psychiatrie d'adultes
M.	DREYFUS Michel	Gynécologie - Obstétrique

M. DU CHEYRON Damien	Réanimation médicale
M. DUHAMEL Jean-François <small>Éméritat jusqu'au 31/08/2018</small>	Pédiatrie
Mme ÉMERY Evelyne	Neurochirurgie
M. ESMAIL-BEYGUI Farzin	Cardiologie
Mme FAUVET Raffaèle	Gynécologie – Obstétrique
M. FISCHER Marc-Olivier	Anesthésiologie et réanimation
M. GÉRARD Jean-Louis	Anesthésiologie et réanimation
M. GUILLOIS Bernard	Pédiatrie
Mme GUITTET-BAUD Lydia	Epidémiologie, économie de la santé et prévention
M. HABRAND Jean-Louis	Cancérologie option Radiothérapie
M. HAMON Martial	Cardiologie
Mme HAMON Michèle	Radiologie et imagerie médicale
M. HANOUS Jean-Luc	Anesthésiologie et réanimation
M. HÉRON Jean-François <small>Éméritat jusqu'au 31/08/2018</small>	Cancérologie
M. HULET Christophe	Chirurgie orthopédique et traumatologique
M. HURAU de LIGNY Bruno <small>Éméritat jusqu'au 31/01/2020</small>	Néphrologie
M. ICARD Philippe	Chirurgie thoracique et cardio-vasculaire
M. JOIN-LAMBERT Olivier	Bactériologie - Virologie
Mme JOLY-LOBBEDEZ Florence	Cancérologie
Mme KOTTLER Marie-Laure	Biochimie et biologie moléculaire
M. LAUNOY Guy	Epidémiologie, économie de la santé et prévention
M. LE COUTOUR Xavier	Epidémiologie, économie de la santé et prévention
Mme LE MAUFF Brigitte	Immunologie
M. LEPORRIER Michel <small>Éméritat jusqu'au 31/08/2020</small>	Hématologie
M. LEROY François	Rééducation fonctionnelle
M. LOBBEDEZ Thierry	Néphrologie
M. MANRIQUE Alain	Biophysique et médecine nucléaire
M. MARCÉLLI Christian	Rhumatologie
M. MARTINAUD Olivier	Neurologie
M. MAUREL Jean	Chirurgie générale
M. MILLIEZ Paul	Cardiologie
M. MOREAU Sylvain	Anatomie/Oto-Rhino-Laryngologie
M. MOUTEL Grégoire	Médecine légale et droit de la santé
M. NORMAND Hervé	Physiologie
M. PARIENTI Jean-Jacques	Biostatistiques, info. médicale et tech. de communication

M. PELAGE Jean-Pierre	Radiologie et imagerie médicale
Mme PIQUET Marie-Astrid	Nutrition
M. RAVASSE Philippe	Chirurgie infantile
M. REZNIK Yves	Endocrinologie
M. ROUPIE Eric	Thérapeutique
Mme THARIAT Juliette	Radiothérapie
M. TILLOU Xavier	Urologie
M. TOUZÉ Emmanuel	Neurologie
M. TROUSSARD Xavier	Hématologie
Mme VABRET Astrid	Bactériologie - Virologie
M. VERDON Renaud	Maladies infectieuses
Mme VERNEUIL Laurence	Dermatologie
M. VIADER Fausto	Neurologie
M. VIVIEN Denis	Biologie cellulaire
Mme ZALCMAN Emmanuèle	Anatomie et cytologie pathologique

PROFESSEUR DES UNIVERSITÉS

M. LUET Jacques <small>Éméritat jusqu'au 31/08/2018</small>	Médecine générale
--	-------------------

PROFESSEUR ASSOCIÉ DES UNIVERSITÉS A TEMPS PLEIN

M. VABRET François	Addictologie
---------------------------	--------------

PROFESSEURS ASSOCIÉS DES UNIVERSITÉS A MI-TEMPS

M. de la SAYETTE Vincent	Neurologie
Mme DOMPMARTIN-BLANCHÈRE Anne	Dermatologie
Mme LESCURE Pascale	Gériatrie et biologie du vieillissement
M. SABATIER Rémi	Cardiologie

PRCE

Mme LELEU Solveig	Anglais
--------------------------	---------

Année Universitaire 2017 / 2018

Doyen

Professeur Emmanuel TOUZÉ

Assesseurs

Professeur Paul MILLIEZ (pédagogie)

Professeur Guy LAUNOY

Professeur Sonia DOLLFUS & Professeur Evelyne Emery (3^{ème} cycle)

Directrice administrative

Madame Sarah CHEMTOB

MAITRES DE CONFERENCES DES UNIVERSITÉS - PRATICIENS HOSPITALIERS

M.	ALEXANDRE Joachim	Pharmacologie clinique
Mme	BENHAÏM Annie	Biologie cellulaire
M.	BESNARD Stéphane	Physiologie
Mme	BONHOMME Julie	Parasitologie et mycologie
M.	BOUVIER Nicolas	Néphrologie
M.	COULBAULT Laurent	Biochimie et Biologie moléculaire
M.	CREVEUIL Christian	Biostatistiques, info. médicale et tech. de communication
Mme	DEBRUYNE Danièle <small>Éméritat jusqu'au 31/08/2019</small>	Pharmacologie fondamentale
Mme	DERLON-BOREL Annie <small>Éméritat jusqu'au 31/08/2020</small>	Hématologie
Mme	DINA Julia	Bactériologie - Virologie
Mme	DUPONT Claire	Pédiatrie
M.	ÉTARD Olivier	Physiologie
M.	GABEREL Thomas	Neurochirurgie
M.	GRUCHY Nicolas	Génétique
M.	GUÉNOLÉ Fabian <small>sera en MAD à Nice jusqu'au 31/08/18</small>	Pédopsychiatrie
M.	HITIER Martin	Anatomie - ORL Chirurgie Cervico-faciale
M.	LANDEMORE Gérard <small>sera en retraite à partir du 01/01/18</small>	Histologie, embryologie, cytogénétique
M.	LEGALLOIS Damien	Cardiologie
Mme	LELONG-BOULOUARD Véronique	Pharmacologie fondamentale
Mme	LEPORRIER Nathalie <small>Éméritat jusqu'au 31/10/2017</small>	Génétique
Mme	LEVALLET Guénaëlle	Cytologie et Histologie
M.	LUBRANO Jean	Chirurgie générale
M.	MITTRE Hervé	Biologie cellulaire
M.	REPESSEY Yohann	Hématologie
M.	SESBOÛÉ Bruno	Physiologie
M.	TOUTIRAIS Olivier	Immunologie

MAITRES DE CONFERENCES ASSOCIÉS DES UNIVERSITÉS A MI-TEMPS

Mme	ABBATE-LERAY Pascale	Médecine générale
M.	COUETTE Pierre-André	Médecine générale
M.	GRUJARD Philippe	Médecine générale
M.	LE BAS François	Médecine générale
M.	SAINMONT Nicolas	Médecine générale

Remerciements

J'adresse mes remerciements aux membres du jury pour avoir accepté d'avoir évalué mon travail.

A mon Président de jury et directeur de thèse, Monsieur le Professeur Jean-Pierre PELAGE. Je vous remercie pour votre aide et votre disponibilité tout au long de ce travail ainsi pour votre bienveillance tout au long des cinq années de mon internat.

A mon juge, Monsieur le Professeur Emmanuel BERGOT. Pour m'avoir fait l'honneur de participer au jury, je vous adresse Monsieur le Professeur mes sincères remerciements.

A mon juge, Monsieur le Professeur DAO Manh Thông. Pour m'avoir fait l'honneur de participer au jury, je vous adresse Monsieur le Professeur mes sincères remerciements.

A mon juge, Monsieur le Docteur Youssef OULKHOUIR. Pour m'avoir fait l'honneur de participer au jury, je vous adresse Monsieur le Professeur mes sincères remerciements

A Marine, pour ton soutien ces cinq dernières années, ton calme, ton objectivité, tes encouragements, et ta confiance ces six derniers mois et pour les années à venir. Merci.

A mes Parents, ma sœur Héloïse mon beau-frère Marco, mon frère Théo pour vos encouragements et votre soutien tout au long de ces années. Merci.

A ma famille et plus particulièrement à Bruno, Michael et mon grand-père qui m'ont supportés, accompagnés et rassurés tout au long de ces années. Merci.

A la famille de Marine, pour votre gentillesse et votre soutien.

A Axel, pour ta bonne humeur, ton soutien, ta gentillesse, ta disponibilité et ta pédagogie.

A Vincent, pour ton soutien, tes conseils, ta sérénité et ta franchise.

A mes amis et particulièrement à Maxime et Adrien, pour votre soutien, votre bonne humeur et votre générosité.

Au Dr Fohlen et à Yassine pour leur aide et leurs conseils avisés.

Aux équipes de manipulateurs et aux secrétaires du service de radiologie du CHU, pour votre gentillesse.

Abréviations

RFA : Radiofrequency ablation

MWA : Microwave ablation

SABR: stereotatic ablative radiotherapy

SBRT: stereotatic body radiotherapy

CT: Computed tomography

US: Ultrasonography

MR: Magnetic resonance

G: Gauge

kHz: kilo hertz

W: Watt

mm: millimeter

Tableaux et figures

Figures

Figure 1 : Histological and immune pathological changes in RFA

Figure 2: Cockade phenomenon

Figure 3: RFA of lung metastasis of colorectal carcinoma

Figure 4: RFA of the longest lesion

Figure 5: Flow diagram showing course of treatment

Figure 6: Overall survival after RFA

Figure 7: Overall without recurrence after RFA

Tables:

Table 1: Demographics

Table 2: Adverse events

Table 3: Imaging follow up

Table 4: Complications after RFA

Summary

I. Introduction	
A. Lung radiofrequency ablation	1
1. Physical principle	1
2. Available technologies	2
3. Ablation procedure	3
4. Histological and immune pathological changes after RFA	3
5. Imaging feature of post ablation zone	4
a. Early phase	4
b. Intermediate phase	6
c. Late phase	6
6. Complication	7
7. Indications	8
B. Others ablation techniques	9
1. Thermoablation technologies	9
a. Microwave ablation	9
b. Cryoablation	9
c. laser induced thermotherapy	10
2. Stereotatic body radiotherapy	10
II. Materials and methods	11
1 Study design	11
2. RFA technique	12
3. Follow up	13
4. Statistical analysis	13
III. Results	14
1. Demographics	14
2. Initial imaging evaluation	14
3. Thermal ablation	15
4. Complications	16
5. Imaging follow up	16
6. Progression	17
a. Pulmonary progression	17
b. Extra pulmonary progression	17
c. Progression summary	18
d. Survival rates	18
IV Discussion	19
1. Complications	19
2. Clinical results	21
3. Follow up and future directions	25
V. Conclusion	27
Tables and figures	28
Bibliography	39
Appendix	44

I/ Introduction

Surgical resection is the treatment of choice for early non-small cell lung cancer and for the treatment of lung metastases (1). Depending on the localization of tumor, the number of lesions and the patient comorbidities surgery may not be a valid therapeutic option. Since last decade, thermoablation techniques have been developed in the liver, the kidney and the lungs to treat small and unresectable tumors (2). The purpose of this single center study was to evaluate safety and long-term efficacy of radiofrequency ablation using small 17-Gauge (17-G) needles in the management of primary and secondary lung cancer.

A/ Lung radiofrequency ablation

1/ Physical principle

Radiofrequency is a physical technique used to destroy tumor cells by thermoablation (3). An oscillating electric current (in the radio waves frequency, 400-500 kHz) passes between an active electrode (applicator) and a reference electrode (grounding pad). Ionic agitation caused by electron collisions in the tissues adjacent to the electrode tip leads to local frictional tissue heating (Joule effect). The aim of this technique is to produce a temperature exceeding 60°C that will induce irreversible damages on cells. As a consequence, an area of tissue necrosis encompassing both the tumor and a margin of normal surrounding lung parenchyma will be obtained.

The characteristics of lung parenchyma that make thermal ablation so effective are low electrical conductivity and heat insulation (4).

However, the presence of vessels within the ablation zone induces a cooling by convection known as heat-sink effect (5). Gilliams AR and Lees WR reported that presence of vessels greater than 3 mm within the ablation zone was associated with a higher rate of tumor recurrence (6).

2/ Available technologies

As previously described, radiofrequency generator (150-200W), produces an oscillating current (400-500 kHz), which passes between an active electrode and a reference electrode-grounding pad most frequently put on lower limbs of the patient. Active electrodes are divided in two groups: monopolar electrodes and bipolar electrodes.

In monopolar electrodes energy, scatters centrifugally from the active electrode put to the center of tumor.

Several technical improvements allow an increase in the size of radiofrequency ablation treatment area:

-Cool tip electrode (Covidien, Mansfield, Massachusetts) is an internally cooled electrode. It is a dual-lumen electrode with a non-insulated active tip in which is delivered a continuous perfusion of chilled fluid. This prevents heat accumulation and thereby charring of tissue adjacent to the tip. This cooling of the electrode allows a progressive increase of temperature and thus a size increase of radiofrequency ablation treatment zone.

-Expandable electrodes are electrodes with fine metallic tines that are deployed through a coaxial access needle. This allows an increase of radiofrequency treatment zone.

Several sizes and shapes of electrodes are proposed by different manufactures:

The superslim electrode (Leveen, Boston Scientific) is a small 17-G multitined expandable electrode, a diameter comparable to biopsy needles. The diameter once electrodes are expanded varies between 2 and 3 cm and should then be used to destroy tumors measuring 3-cm or less. Beyond this diameter, there are larger multitined expandable electrode with size ranging from 15-G to 13-G (Leveen CoAcces needle, Boston Scientific), a diameter larger than for biopsy needles. Inside the tumor electrodes tines are deployed in an umbrella like fashion. StarBurst XL and StarBurst Talon (Angiodynamics, Latham, NY) are also expandable devices with Christmas tree like shape once electrode tines are deployed.

With bipolar electrodes, oscillating current does not cross the body but circulates between two parts of the same needle or between two needles inserted in the tumor. This allow not to use a reference electrode (grounding pad) and to increase the size of treatment zone by positioning these two electrodes inside a same tumor

3/ Ablation procedure

CT is the preferred imaging modality for safe guidance even if ultrasonography (US) may be used for superficial pleural lesion (7). New angiography rooms include 3D-CT reconstructions and fusion tool allowing users to perform thermal ablation of large and peripheral nodules without CT (8).

Most centers prefer to use general anaesthesia for thermal ablation but radiofrequency ablation (RFA) can be performed with conscious sedation. General anesthesia is useful in the treatment of lower lobe lesions and diaphragmatic lesions that can be mobile. It is also preferred when a long time of ablation is needed to treat multiple lesions or in case multiple needles need to be inserted to treat a large lesion.

Grounding pad is placed on lower limbs of patient and tumor lesion is targeted with active electrode using fluoro-CT control. If an expandable electrode is used metallic tines are deployed within the lesion after confirmation of the optimal position.

The generator is then activated. Most generators allow evaluation of post-ablation local temperature, time of treatment and impedance. Every manufacturer offers a specific algorithm and instruction for use depending on the type of needle and the size of lesion. During ablation, it is also possible to monitor the temperature inside the needle and inside the ablation zone.

When tissue get charred, impedance of external loads increases. This prevents radiofrequency generator to deliver energy in the tumor. This increase of impedance and decrease of radiofrequency power is called "roll-off".

At the end of treatment, chest CT is performed to assess the adequacy of the ablation zone and to identify early complications including pneumothorax, alveolar hemorrhage and pleural effusion that may require immediate treatment.

4/ Histologic and immune-pathological changes after RFA

Inside the treated lesion, three areas are classically described (Figure 1) (9).

A central area where the ablation temperature is greater than or equal to 50°C. In this area coagulation necrosis occurs defined by cell membrane collapse, protein denaturation, mitochondrial dysfunction, failure of enzymatic function especially of polymerase function that lead to an interruption of DNA replication.

A peripheral zone surrounds this central area. In this area temperature of treatment is between 41°C and 45°C. This temperature induces sub-lethal and reversible damages in enzymatic and metabolic cell functions. These enzymatic and metabolic cell dysfunctions are not associated with cell death but induce a vulnerability to further injury. In this zone, inflammatory phenomena occur like an increase of the blood flow that may increase the production of free radical and the circulation of liposomal agents (good vector of chemotherapeutic agents). Exposition of damaged tissue markers such as markers of endothelial injury and hyaluronic acid, associated with chemokines and cytokines, first promotes a recruitment of innate immunity (dendritic cells, neutrophilia, antigen-presenting cells, natural killer cells) followed by the recruitment of humoral cells (B and T lymphocytes).

An area of normal tissue surrounds the peripheral zone. In this area “heat sink effect” occurs that causes tissue cooling and induces a decrease of ablation efficiency. Lymphatic drainage of tumor antigens promotes stimulation of dendritic cells and naïve T cells.

5/ Imaging features of the post ablation zone

There is no well-defined criterion to follow the ablation zone. Immediate post treatment CT allows identification of modifications in the ablation area that will change and disappear in the CT follow-up. RECIST 1.1 criteria cannot be used initially to follow the treated lesion. CT performed at one month will be used as the baseline CT since size will increase immediately after ablation (10).

a) Early phase

In the early phase (less than one week after ablation), a cone-shaped or a rim of ground glass opacity may completely or partially surround the targeted lesion. Anderson et al have observed that a thickness of ground glass opacity margin less than 3mm was associated with a higher risk of local recurrence (11). Ground glass opacity margin at least 5 mm around the complete tumor volume is suggested to be the ideal margin after RFA. Intra-lesional bubbles are frequently seen. On the needle tract, increased attenuation, and a lightbulb-shaped opacity may also be seen between the ablated tumor and the skin entry. Thus, immediately after RFA the ablated lesion is larger than the initial tumor (10).

After radiofrequency, the ablated lesion shows a central hypo-attenuating area with reduction of enhancement (12).

Benign peri-ablation rim of enhancement with a size less than 5 mm may be seen. This rim is thick, has a concentric aspect and probably represents inflammatory reaction to radiofrequency. This benign rim must be differentiated from irregular and nodular peripheral enhancement, which represents incompletely ablated tumor or residual tumor.

On immediate post treatment CT, some patients may exhibit a particular pattern of post ablation imaging. It is called the cockade phenomenon and is defined by the presence of multiple concentric rings of varying attenuation surrounding the ablated lesion (Figure 2) (14).

Six areas are commonly described:

- In A area, we can find a thin area of charred tissue corresponding to needle tract.
- In B area, we can find a partial emptying due to the vaporization of lesion and coagulative necrotic area with destroyed capillaries and ghost phenomenon (seemingly intact tissue after sudden thermal coagulation (13)).
- In C area, coagulation necrosis is found surrounding the tumor with collapsed alveoli, entrapped air and ghost phenomenon.
- In D area: enzymatic necrosis is observed, associated with blood capillaries destruction, micro thrombosis and lysosomal enzymatic activation.
- In D1 area, micro hemorrhages are found.
- In E area, edema, inflammatory reaction and vascular congestion are found.

These different concentric rings of attenuation seem to correspond to the different areas describe by Miao et al in the MR follow-up and histologic analysis of mice lung tumors ablated by RFA (13).

b) Intermediate phase

In the intermediate phase (between one week and two months after ablation), involution of the ground glass opacity occurs and therefore a nodular aspect of the scar may be present. Cavitation is a common feature found in 24%-31% of treated lesions (15). The ablated lesion is larger than the initial lesion, but its size decreases compare to the diameter found on CT obtained at one month. This decrease can be explained by a regression of parenchymal edema, inflammation and hemorrhage (involution of ground glass opacity). Linear opacities nearby the scar may be found as a result of segmental volume loss. Pleural thickening on the tract of needle is also commonly found. No enhancement of the scar is normally found. An irregular or nodular enhancement is suggestive of residual disease or progression. Nevertheless, like on early CT evaluation, a thin peripheral regular enhancement may be found.

c) Late phase

In the late phase, observed more than two months after treatment, the intra-lesional bubbles have disappeared. Wall thickness and size of cavities tend to decrease. Cavitation may completely disappear and be replaced by an architectural distortion of lung parenchyma. Residual pleural effusion and pleural thickening of tract needle have to totally disappear. Satellite nodules, nodules along needle tract and an irregular or nodular aspect of the scar are indicators of recurrence (10). An increase in size of the ablated zone three months after RFA is to be considered as a local tumor recurrence. In the late phase, RFA scar may have an inferior enhancement compare to the initial tumor, a central enhancement more than 10 mm or more than 15 Hounsfield units (HU) suggests local disease progression or incompletely ablated tumor (12)

Figure 3 shows the typical evolution of a successful RFA of a lung tumor.

6/ Complications

It is well known that the size of the needle used for lung biopsy has an effect on risk of complication like pneumothorax. Kuban et al found that the use of a 19-G coaxial guide needle significantly decreased the risk of pneumothorax and chest tube placement compared with an 18-G coaxial guide needle after computed tomography-guided lung biopsy (16). Not surprisingly, the most common complication reported after radiofrequency ablation is pneumothorax (17). In a retrospective study of de Baere et al 67% of pneumothorax were found (18). No treatment was needed in 28%, single aspiration was made in 14% of pneumothorax cases but 58% of pneumothorax required chest tube placement. Gillams et al defined that the number of tumors, the electrode position and the length of electrode trajectory through aerated lung, impact on the likelihood of pneumothorax (19). Pre-existing emphysema is also an independent risk factor for pneumothorax requiring pleurodesis (20).

Unlike pneumothorax after lung biopsy, pneumothorax after lung radiofrequency treatment may occur or recur late after ablation procedure (12) These are called delayed or recurrent pneumothorax. Yoshimatsu et al describe that contact of ground glass opacity to the pleura was associated with a higher risk of delayed or recurrent pneumothorax (21). The absence of pneumothorax should always be checked one day after procedure on X rays chest control.

Pleural effusion is a common side effect after radiofrequency procedure. Large pleural effusions needing drain are relatively rare and can be reactive. Kashima et al (20) describe two significant risk factors of aseptic pleuritis: number of pleural punctures and previous systemic chemotherapy. Fortunately, haemothorax is a rare complication and should be suspected in case of circulatory failure and massive pleural effusion.

In a retrospective study of 1,000 lung RFA procedures, an incidence of pneumonia of 1.8% and an incidence of 1.6% of lung abscess were reported (20). Care should be taken to diagnose these infectious complications, indeed abscess like appearance and cavitation might be seen on CT controls several months after RFA procedure.

Hemoptysis is rare even if large parenchymal hemorrhage are found in 7-8% after RFA procedure but are most of the time asymptomatic (22)(23). Pseudo-aneurysm caused by vascular injury are rare events, in a retrospective series of 583 RFA procedures Sakurai J et

al found an incidence of 0.2% of pseudoaneurysm (24). Rupture and massive hemorrhage require urgent catheter angiography and embolization (25).

Other complications including rib fractures, superficial skin burns, intercostal nerve injury and damage to the diaphragm have also been described (26).

7/ Indications

Decision for radiofrequency ablation is always taken during a multidisciplinary tumor board. Gold standard treatment for lung primitive tumors and metastasis remains surgery. Thus, RFA is discussed in case of contraindications to surgery or if patient refused surgery. Radiofrequency is a second intention and curative treatment.

Indications for radiofrequency have been well established:

- Lesion less than 3 cm in diameter (at to 4 cm).
- Less than 5 metastasis in the two lungs.

Contraindications for radiofrequency include:

- Contraindication for general anesthesia.
- Low platelet level (< 50,000/mm³).
- Low prothrombin time (<50%) and anticlotting medicines.
- Pacemaker.

B/ Other ablation techniques.

1/ Thermo-ablation technologies

a/ Microwave ablation

Microwave ablation uses electromagnetic waves in the microwaves spectrum (300MHz to 300GHz). Electromagnetic microwave produce friction between water molecules. The spinning between water molecules interacts with surrounding tissue and causes tissue heating by transfer of kinetic energy (5).

This allows a raise of temperature to 60°C-150°C in a short time leading to coagulation necrosis of the cell. In microwave ablation energy is not transmitted by electrical current thus grounding pad is not necessary.

Microwave enables simultaneous delivery with multiple probe so the ablation zone is larger than RFA. Microwave ablation procedure is made under general anesthesia (4). Microwave electrode size is 13G or 14G.

Lower convective cooling (heat sink effect), because of high work temperature in MWA, has been demonstrated in animal studies (27).

b/ Cryo-ablation

Cryo-ablation uses pressurized argon gas and distributes it to area of lower pressure. This allows the gas to expand and to reach ultracold temperature leading to the formation of iceball (5).

With this iceball, probe is stuck inside the tumor (like with expandable electrode).

When temperature is less than -40°C, protein denaturation, cell rupture and tissue ischemia occur, leading to cryogenic cell destruction (5).

Cryoablation allows simultaneous delivery of energy though several probes which can be activated at the time provided a synergistic effect.

Ground glass opacity is not created during cryoablation. Indeed, an ice ball formation at the extremity of cryoablation tip and edematous changes in the surrounding lung parenchyma are used to estimate the ablated margins (4).

c/ Laser-induced thermotherapy

Laser ablation is less developed than the three other techniques.

The physical mechanism of laser induced thermotherapy is temperature elevation within the tumor by laser fiber to induce coagulation necrosis of tumor cells (28). Laser ablation is performed by using neodymium-doped yttrium aluminum garnet laser with the wavelength of 1064nm. Optical fiber is introduced within a 21 gauge needle so there are less complications. Ablation is short because of instant release of laser energy.

2/ Stereotatic body radiotherapy

Stereotatic body radiotherapy (SBRT) also known as stereotatic ablative radiotherapy (SABR) uses a three dimensional coordinate system with internal fiducial or image guidance for tumor tracking (29). Precise adjustment of the focus of the radiation beam to compensate respiratory and unintentional motions of patient or targeted lesion is achieved. The delivery of SBRT generally uses multiple non coplanar arcing fields directed at the radiation target. Thus, the dose gradient is deeper than conventional radiotherapy treatment. Stereotatic body radiation fractionation uses doses ranging from 5 to 33Gy per fraction (29).

Since, radiofrequency ablation is not the treatment of choice for centrally-based tumors and it could be difficult to place needles in small apical tumor, in posteriorly positioned tumor, and in tumor close to scapula, SBRT may be considered as an alternative treatment to treat small solitary lung tumors (30)

II/ Materials and methods

1/ Study design

Retrospective analysis of a prospectively acquired database. This study was approved by our institutional review board and informed consent was obtained from patients.

All patients with primary or secondary lung tumors treated using RFA using 17-G needles between June 2005 to October 2008 at University Hospital Ambroise-Paré Paris, were included to obtain a potential follow-up of more than 10 years.

Indication for RFA was confirmed by a pluridisciplinary tumor board with interventional radiologists, medical oncologist, pulmonologists, surgeons and pathologists involved.

Inclusion criteria for ablation were: proven diagnosis of lung tumor (biopsy or previous history of neoplasm), age greater than 18 years, unilateral or bilateral unresectable primary or secondary lung tumors, less than three tumors in the two lungs, Eastern Cooperative Oncology Group (ECOG) performance status of 0,1 or 2, platelet count greater than $100 \times 10^9/L$ and international normalized ratio of 1.5 or less. Patient with minimal extra-pulmonary metastasis were not excluded.

Exclusion criteria for ablation were: patient considered high risk for ablation because of major comorbidities, more than three tumors in the two lungs, ECOG performance status of more than 2, platelet count less than or equal to $100 \times 10^9/L$, international normalized ratio more than 1.5, pregnant or breast-feeding patient. In addition, all patients treated during the study period using microwave or RFA with needles larger than 17-G were also excluded from analysis.

2/ Radiofrequency ablation technique

All procedures were performed under general anesthesia and intubation.

CT planning was obtained to assess the size of nodules and to select the optimal access route. The electrodes were percutaneously introduced into tumor using CT fluoroscopic guidance. Two types of small 17-G electrodes were used for ablation: a multitined expandable electrode (LeVeen Superslim; Boston Scientific, Natick MA) and a single internally cooled electrode (Cool Tip; Covidien, Mansfield, Massachusetts). Prophylactic antibiotics were given before and after ablation procedure.

Recommended algorithms provided by the manufacturer were used and ablation time and power were recorded.

If tumor ablation was incomplete or other nodules remained untreated a second procedure of RFA was planned.

Fluoro-CT was used to monitor the procedure and identify complications such as: pneumothorax, pleural effusion hemorrhage, every early complication was reported.

Per procedural and post procedural complications were carefully recorded.

Complications were defined using the Common Terminology Criteria for Adverse Event version 5.0.

Any death 30 days after the procedures was considered as a grade 5 adverse event. The grade 3 or 4 adverse event (severe symptoms or life threatening) were considered as major complication. The grade 2 or 1 adverse event (moderate symptom or asymptomatic) was considered as minor complication.

Pneumothorax were divided in three groups: minimal which not requiring any treatment, mild treated with simple aspiration and large or clinically poorly-tolerated requiring chest tube placement.

Chest CT was performed at the end of procedure to assess the ablation zone and diagnose complication.

3/ Follow up

Clinical and imaging follow up using whole-body CT were obtained at 3, 6, 12, 15 months after ablation and every 6 months thereafter.

The assessment target tumor response was based on the CT analysis of lesion size and shape. In CT follow-up during first months after RFA, a high density area representing the ablation zone usually larger than the initial tumor is found.

Local tumor progression was defined as enlargement in the overall size of the ablation zone after the first CT post-ablation used as a baseline examination.

When a nodule appeared outside the ablation area it was defined as new pulmonary metastasis corresponding to lung progression. Distant progression in the liver, brain and other organs (except lung) corresponded to disease progression outside lung.

Time of last office visit and death were used to define overall survival (OS). Lung-free survival (at the treated site or distant lung progression) and extra-pulmonary progression-free survival were defined based on CT findings.

4/ Statistical analysis

Continuous variables were expressed as mean \pm standard deviation (SD). Median and range were provided when appropriate. Categorical variables were expressed as frequency and percent. Time to progression was measure from date of treatment (radiofrequency ablation) to date of progression, death or last follow-up at the site of ablation, in the lungs or outside the lungs (progression in other organs). Comparisons of means were performed using the Wilcoxon signed-rank test. Overall survival and overall survival without progression were calculated by Kaplan-Meir method. Differences were considered statistically significant if the p value was less than 0.05. Statistical analysis was performed using the SAS 9.4 software (SAS Institute, Cary, NC, USA).

III/ Results

1/ Demographics

Forty-two consecutive patients composed of 17 women (41%) and 25 men (59%) aged 70.7 ± 9.4 (39-77) were included in this study. Thirty-eight (90%) patients were Caucasian and 4 patients (10%) belonged to other ethnic groups.

Nineteen additional patients treated with ablation technique during the study period were excluded: 13 patients were treated with radiofrequency needle with a diameter greater than 17-G and 6 additional patients were treated using microwave ablation.

Five patients (12%) had primary lung carcinoma including adenocarcinoma (n=2) and epidermoid (n=3). Thirty-seven patients (88%) presented with lung metastases. The location of the primary tumor was colorectal in 19 patients (45%), breast in 5 (12%), kidney in 4 (9.5%), head and neck in 4 (9.5%), lung in 2 (5%), miscellaneous in 3 (7%). (Table 1).

Thirteen patients (31%) had previous lung surgery and 26 patients (62%) had prior chemotherapy (Table 1).

Nine patients (21%) had extra-pulmonary metastases. Liver metastases were treated by surgery and RFA whereas brain and bone metastases were treated using radiation therapy.

2/ Initial imaging evaluation

Twenty-nine (69%) patients had only one nodule, 11 (26%) patients had two nodules and 2 (5%) patients had 3 nodules. The diameters of treated nodules were 22.7 ± 6.1 mm (median 24.4 mm; range 11-60 mm) for the first nodule and 17.6 ± 7.2 mm (median 16.0mm; range 8.5-35 mm) for the second nodule respectively.

3/ Thermal ablation

Fifty-one procedures were performed in 42 patients. Fifty-one nodules were ablated during 56 thermal-ablations. Thirty-three patients had one procedure and 9 patients had two procedures for retreatment or presence of a second nodule. LeVeen electrodes were used in 19 procedures (37%) and Cooltip electrodes were used in 32 procedures (63%). The choice of equipment was left at the operator discretion.

The delay between diagnosis and first RFA was 10.2 ± 17.5 months. During the first RFA, LeVeen electrode (2.5-3.5 cm diameter when electrodes are expanded) was used in 16 patients (38%) and Cooltip electrode (with a theoretical ablation zone of 3 cm) was used in 26 patients (62%). In the cooltip electrode group, switching system (two electrodes used simultaneously) was used in 4 patients.

The mean duration of the first RFA was 18.6 ± 4.8 min (range 10-38 min) with a maximum power output of 105.3 ± 15.4 W (range 60-80 W).

A second RFA procedure was performed in 9 patients (21%). In 5 patients for incomplete ablation after the first RFA and in four patients to treat additional nodules after the first RFA. Delay between first and second ablation was 7.2 ± 5.6 months. LeVeen electrodes (2.5-3.5 cm) were used in 3 patients and Cooltip electrodes (3 cm) were used in 6 RFA sessions, respectively. In the Cooltip electrode group, switching system was used in 1 patient and three electrodes were inserted to treat a single lesion in one patient. Figure 4.

The mean duration of the second RFA was 25.0 ± 15.4 min (range 10-60 min) with a maximum power output of 112.2 ± 51.1 W (range 40-200 W).

4/ Complications

Pneumothorax was found in 14/42 (33%) patients and in 14/51 (27%) procedures. One (2%) patient had a large volume pneumothorax, rated as CTCAE grade 3, that required chest tube placement and one (2%) patient had mild pneumothorax, rated as CTCAE grade 2, which only required aspiration. A total of 12 (29%) other patients had minor pneumothorax diagnosed using CT but not requiring any treatment (CTCAE grade 1).

Hemoptysis which occurred in 2 (5%) patients was rated CTCAE grade 3 and treated conservatively. One patient had pleural effusion not requiring treatment (CTCAE grade 1). Ground glass opacity and alveolar hemorrhage at the ablation site and along the needle track were found in 16 (38%) patients and in 16 (31%) procedures. These minor complications were rated CTCAE grade 1. Major complications occurred in 3 patients (7%). (Table 2)

5/ Imaging follow-up

The mean and median long diameter of nodules at baseline were respectively 22.7 ± 6.1 mm and 24.4 mm (range 11-60 mm). On the first CT evaluation obtained 2.2 \pm 1.8 months after RFA in all patients, the mean long diameter of the lesions showed a significant size increase compare to pretreatment: 31.5 ± 8.3 mm corresponding to an increase of $44\% \pm 36$ ($p=0,0001$). On the second CT evaluation obtained 6.8 \pm 4.4 months after RFA on 41 patients, a significant size increase still noticeable compare to pretreatment values $27.6 \pm 11,8$ mm ($+23\% \pm 30$, $p=0,0001$) was found. On the third CT evaluation obtained 11.9 \pm 5.3 months after RFA on 37 patients, no significant difference in size was found compared to pretreatment mean long diameter $22.7 \pm 11,9$ mm ($-2\% \pm 37$, NS). On the fourth CT evaluation obtained 17.0 \pm 6.2 months after RFA on 23 patients, a significant decrease in size was found with a mean long diameter of 17.5 ± 8.4 mm ($-19 \pm 33\%$, $p=0.002$). (Table 3).

6/ Progression

a/ Pulmonary progression

After the first RFA pulmonary progression of ablated nodules was found in eight patients (19%), 4 of these patients was previously treated by using LeVeen electrodes (4/16, 25%) and 4 of these patients was previously treated by using Cooltip electrodes (4/26, 15%). The difference between both needles was not significant.

Long diameter of 27.0 ± 7.5 mm vs 21.5 ± 5.1 mm was a predictive factor of progression in univariate analysis ($p=0.02$).

Second RFA was performed in 5 patients, systemic chemotherapy was performed in 2 patients and 1 patient refuse to have additional treatment.

Figure 5 shows treatments performed after the first RFA.

At the end of follow up, 3 patients had exclusive local tumor progression (progression in ablation site) (7.1%), mean time of exclusive local tumor progression was 7.9 ± 2.1 months, 16 patients had pulmonary progression outside site of treatment (38.1%), mean time of pulmonary progression was 21.2 ± 15.6 months. Six patients had both local tumor progression and progression outside RFA treatment site (14.3%), mean time of progression was 32.6 ± 18.8 months.

b/ Extra-pulmonary progression

After 16.1 ± 8.7 months extra pulmonary progression was detected in 8 patients (19%). Six patients had bone progression, including one tract needle seeding, 3 patients presented liver metastasis, 1 patient presented adrenal gland metastasis and one patient had muscle metastasis. In univariate analysis, no predictive factor was identified.

At the end of follow up 25 patients had extrapulmonary progression (59.5%), mean time of extra pulmonary progression was 32.6 ± 26.3 months.

c/ Progression summary

After 16.1 ± 8.7 months, pulmonary progression was found in 22 patients (52%), 8 patients had local tumor progression (19%) and 14 patients had new nodules (33%).

At the end of follow-up, 9 patients had local tumor progression, rate of local tumor progression per patient was 21.4%. Twelve patients did not have progressive disease, thus 30 patients had overall progressive disease (71.4%).

Thirty-two patients (76%) required additional chemotherapy.

d/ Survival rates

After 16.1 ± 8.7 months lung-free and progression free survival was 46% and 41%, respectively.

Median and mean OS was 29.8 and 39.5 months (1.8 -154.4), respectively and 1-, 2-, 3-, 4-, 5 and 9- years OS rate were 93%, 71%, 58%, 39%, 31% and 10% respectively (figure 6).

Table 5 (appendix) shows evaluation of OS.

Median and mean OS without progression were 25.6 months and 34.9 months (SE= 6.1), respectively. (figure 7)

A total of 20 (48%) patients died during the follow-up.

IV/ Discussion

1/ Complications

In this study, only used 17-G electrodes were used whereas in the literature most authors do not specify the electrode size. This information seems clinically relevant since the rate of pneumothorax varies between 11% and 67% (31)(18). Moreover, rate of pneumothorax is sometimes expressed in rate per lesion or rate per patient which makes the frequency of this complication difficult to understand.

The rate of pneumothorax per procedure in this study was 27% with 2% of severe pneumothorax requiring treatment. In a prospective study made in 137 RFA procedures using 15-G electrode, Lencioni et al found a rate pneumothorax and severe pneumothorax of 40% and 19.7%, respectively (32). de Baère et al in a retrospective study of 642 RFA procedures using mainly 15-G electrodes (3% of 17-G electrodes) reported a rate of pneumothorax of 67% with 38.7% of severe pneumothorax, much higher than in our series (18). Vogl et al reported their experience using large 14-G electrodes in 65 procedures and found a rate of pneumothorax of 20% with 7.6% of severe pneumothorax (28).

Finally, in a retrospective study on 1,000 RFA procedures using 17-G internally cooled electrode Kashima et al found a pneumothorax rate of 46.1% and a rate of severe pneumothorax (treated with pleurodesis) of 1.6% (20).

As expected, these results tend to prove that the size of electrode have an impact on pneumothorax occurrence during RFA procedure.

The significant difference regarding the rate of pneumothorax between the study by de Baère and our own experience should be taken with care indeed as it may also be explained by the difference of population. In de Baere study there was a high proportion of patients (127/566 corresponding to 22%) with 3 lesions or more whereas in our study only 2/42 patients had 3 lesions (18).

In a retrospective study made on 66 MWA procedures using large 14.5-G electrode in patient with metastases and primary tumors, Wolf et al reported 39% of pneumothorax and 12% of severe pneumothorax (33). In the MWA literature, the rate of pneumothorax varies widely, ranging from 8.5% to 63% (34). These results seem comparable to those reported using RFA.

SABR is not associated with a risk of pneumothorax but it requires the placement of fiducials in most cases. In a retrospective study, Trumm et al reported 33.3% of pneumothorax (13.3% major and 21% minor) and 30.5% of peri-tumoral hemorrhage after fiducial

placement in 105 patients with lung tumors (35). These results are also closely similar to those reported after RFA.

In our study we found 1.9% of pleural effusion similar to Kashima et al who reported a rate of pleural effusion of 2.3% (20). In our study, alveolar hemorrhage occurred in 31% of cases but hemoptysis occurred only in 2 patients (1.9% of procedure). In a meta-analysis based on 32 studies and 8133 transthoracic lung core biopsy, Heerink et al found an occurrence of 18% of lung hemorrhage and 4.1% of hemoptysis after lung biopsy (36). In a retrospective study of 249 CT-guided transthoracic biopsies with 17-G and 18-G needle core, Chassagnon et al found that the concordance between occurrence of significant alveolar hemorrhage and hemoptysis was poor ($\kappa= 0.28$) (37).

(Table 4)

In our study, one case of tumor seeding (rib metastasis) along the needle tract occurred. This is a serious delayed complication after RFA. Hiraki et al reported two cases out of 661 procedures (0.3%) (38). It is a poorly understood phenomenon because of the paucity of reported cases. The main hypothesis is that the removing of electrode without cauterizing the needle tract may be a risk factor of tumor seeding (38).

2/ Clinical results

For patients with early-stage lung cancer (NSCLC), surgical resection remains the standard treatment and provides the best curative option, with 5 year survival rates of 60 to 80% for stage I NSCLC and 30 to 50% for stage II (39).

Pulmonary metastasectomy has also been described as standard treatment for pulmonary metastases. Criteria for metastasectomy in curative intent has been described by Thomford et al in 1965 and with few changes, they remain relevant today (40). Nowadays, the criteria for surgery are as follow: controlled or controllable primary malignancy, absence or controlled or controllable extrathoracic metastasis, all lesions are resectable, adequate remaining respiratory reserve, absence of alternative treatment options with lower morbidity. Only 15 to 25% of patients with pulmonary metastases will be appropriate candidates for surgery (41). In an important publication in 1997 reported from the internal registry of lung metastasectomy of 5,206 patients from Europe and North America, Pastorino et al found that the overall survival after complete metastasectomy was 36% at 5 years (42). Better 5-years survival rate was found for patients with a single metastasis (43%) when compared to those with 2 to 3 metastases (34%) or those with 3 or more metastases (27%) (42).

There is also a wide difference in 5-year survival, depending on the type of cancer. In a systematic review and meta-analysis of 25 studies, including 2,925 patient treated with pulmonary metastasectomy for colorectal cancer, Gonzalez et al, found an overall 5-year survival after complete resection ranging from 27% to 68% (43).

In our study, progression free survival and lung-free survival after 16.1 ± 8.7 months were receptively 41% and 46%. Median and mean OS was 29.8 and 39.5 months, respectively and 1-, 2-, 3-, 4-, 5- and 9 years OS rate were 93%, 71%, 58%, 39%, 31% and 10% respectively. Our results are a little bit different from the largest report on 566 patients made by de Baère et al: median OS was 62 months and OS rates was 92.4%, 79.4%, 67.7%, 58.9% and 51.5% at 1-, 2-, 3-, 4-, and 5 years respectively, rate of local tumor progression per patient were 10.4%, 15.5%, 17.5% and 18.1% at 1, 2, 3 and 4 years respectively (18). Moreover, local tumor progression at the ablation site was associated with poor overall survival with local tumor progression being a time dependent variable.

Several hypotheses may account for our results.

First, patients were carefully selected regarding the number of metastases, most patients presenting with a single lesion.

de Baère reported results obtained in a population with 22% of patients presenting with 3 or more metastases (18). In our study patients, only 2/42 patients had 3 lesions. Even if we had very strict criteria regarding the overall control of metastatic disease at the time of inclusion 31% of our patient had previous lung surgery and 21% had extrapulmonary metastases. In de Baère study 22% of patients had extrapulmonary active diseases amenable to local therapy and rate of patient with previous lung surgery was not indicated (18).

Secondly, we reported a high proportion (45%) of colorectal metastases in our population.

Our OS rates are quite similar to those found in the RAPTURE study, Lencioni et al reported an OS of 70% and 48% at 1 and 2 years after RFA in the subgroup of patients with NSCLC, and OS of 89% and 66% at 1 and 2 years after RFA in the subgroup of patients with colorectal metastases (32).

In our study, 62% of patient had prior chemotherapy before RFA and at 16.1 ± 8.7 months, 76% of patients had additional chemotherapy but we did not evaluated the effect of chemotherapy on overall survival after RFA. Chua et al in a retrospective study have demonstrated that the use of adjunctive chemotherapy was an independent predictor for survival after thermo-ablation of colorectal metastases (44).

We found that tumor diameter was predictive of local progression, with significantly larger diameter in patients with local progression (27.0 ± 7.5 mm) compared to patients without local progression (vs 21.5 ± 5.1 mm; $p=0.02$). In a prospective study evaluating factors influencing success after RFA in 37 patients with lung metastases, Gilliams and Lee demonstrated that recurrence was significantly more common in tumors larger than 3.5 cm (100%) than in tumors smaller than 3.5 (28%) (6).

In another monocentric retrospective study of 153 patients treated with RFA for pulmonary malignancy, tumor size was a statistically significant predicator of local tumor progression in patients with tumors larger than 3 cm presenting with a median time to progression of 12 months vs patients with size lower than to 3 cm with a median time to progression of 45 months (45).

Microwave ablation in treatment of lung metastases and NSCLC is a thermal ablation technique with a relatively poor literature. There are a high variability of results and methods in MWA studies. Vogl et al reported a 1 and 2 year OS rates of 91.3% and 75% respectively

in a series of 130 ablated metastases (46). Lu et al found a 1-, 2 and 3 year OS rates of 47%, 21% and 14% after the ablation of 37 metastases (47).

Even if MWA technology allows ablation of larger volumes faster and has demonstrated less susceptibility to heat sink effect in animal study, the relatively few and heterogenous results do not provide sufficient data to indicate any superiority of MWA compare to RFA in local control and survival (48).

Treatment of lung oligo-metastatic disease by SABR is based on few phase I/II studies and relatively small retrospective studies (49). One of the largest study analyzed outcome and complications after SABR over 13 years in 321 patients with 587 metastases (50). The overall survival at 1, 3, 5 and 7.5 years were respectively 80%, 39%, 23% and 12%. WHO performance PS (0-1) (HR=0.49; $p<0.001$), solitary metastasis (HR=0.75; $p=0.049$), metastasis with size inferior to 30 mm (HR=0.053; $p<0.001$), metachronous metastases (HR=0.71; $p=0.02$) and pre SABR chemotherapy (HR=0.59; $p<0.001$) were independently related to favorable OS. In this study 201/587 lesions were colorectal metastases. A meta-analysis of SABR used in lung oligometastases, based on 18 studies and 1,920 patients found that the local rate of control in patients with pulmonary oligo metastases from colorectal cancer was significantly lower than that in patients with pulmonary oligo metastases from other cancers (OR= 3.10, $p<0.00001$) (51). Laarhoven et al suggested that the large amount of hypoxic cells in liver metastases from colorectal cancer provides radio resistance compare to metastases from other cancer (52).

The effectiveness of SABR in NSCLC was evaluated by Chang et al in a study that pooled, two independent randomized phase 3 trials which failed to complete accrual (STAR and ROSEL registered with Clinicaltrial.gov), eligible patients were those with clinical T1-2a ($<4\text{cm}$), N0M0, operable NSCLC (49). These patients were randomly assigned in a 1:1 ratio to SABR or lobectomy with lymph node dissection or sampling. A total of 31 patients were assigned to SABR and 27 patients were assigned to surgery. OS at 3 years was 95% in SABR group and 79% in surgery group (HR=0.14, 95% CI: 0.017-1.190; $p=0.037$), recurrence free survival at 3 years was 86% in SABR group and 80% in surgery group (HR=0.69, 95% CI: 0.21-2.29; $p=0.54$).

These pooled analysis underwent many criticisms but SABR should be considered has an alternative to surgery in stage I NSCLC for patient with clinically significant morbidities.

Even if SABR is considered as a non-invasive technique some complications such as post radiation toxicity complications may occur. That is why the main limitation of SABR is to treat

several metastases in the same region because of the risk of overlapping of radiation fields and the difficulty to re-treat a recurrent lesion after previous SABR treatment (53).

In NSCLC, surgery remain the standard treatment especially because of lymph node dissection, which provides a survival benefit (39). A possible advantage but not demonstrated of SABR treatment of lung metastases is low dose lymph node irradiation.

3/ Follow up and future direction

One of the major issue in the post ablation follow up is the early detection of recurrence. In the study of de Baere, the follow up CT evaluation only detected 50% of case of local progression during the first year; the rates of local progression per tumor were 5.9%, 8.5%, 10.2% and 11% at 1, 2, 3 and 4 years respectively (18).

As we previously described, there are several CT patterns in the area ablation that vary with time. This induce a real challenge for radiologists to detect the local recurrence.

Apart from the size of the ablation zone, some authors suggest that the evaluation of dynamic enhancement should be used to detect recurrence. To obtain dynamic contrast-enhanced images, CT acquisition is repeated at 45, 90, 180 and 300 seconds after intravenous injection of 100ml of iodinated contrast material at a rate of 2-3mL/second (10). The identification of a nodular or a central enhancement in the ablation area may be an added value to measurements but perfusion CT is associated with increased radiation dose, and thus is not routinely performed in most centers.

Even if no standard imaging protocol for the follow-up of patients treated with ablation for lung tumors has been validated, some authors suggest that PET/CT should be incorporated into the imaging follow-up.

FDG-PET allows a whole-body survey, evaluating metabolic activity of malignant tissues. In a retrospective study Suzawa et al evaluated the diagnostic performance of detection of local tumor progression of FDG PET and CT in 143 patient with 231 tumors treated RFA, local progression was identified in 47 tumors (20.4%): the area under the receiver operating channel curve of PET diagnostic performance was significantly higher than the ROC curve of CT performance at 4 time points; (0.71 vs 0.55 at 3 months, 0.82 vs 0.60 at 6 months, 0.84 vs 0.66 at 9 months and 0.92 vs 0.68 at 12 months) (54).

However, few days after RFA, the peripheral area of treated nodules shows an increase in FDG uptake when PET is obtained because of inflammatory and necrotic changes. Because of inflammation, false-positive results mimicking active tumor and false negative masking tumor foci may be found (55). In a prospective study evaluating the effectiveness of RFA in 20 patients (24 lesions) with thoracic malignancy, Higuchi et al evaluated tumor response using FDG-PET and CT (56). The FDG-PET results 7-14 days after RFA did not correlate with local recurrence whereas positive findings 3-6 months after RFA were significantly correlated with local recurrence ($p=0.0016$). PET-CT seems to be an effective tool for assessing treatment response and recurrence and should be included in the strategy of post RFA follow up after 3

months. However, because of the cost and availability, PET-CT is used only in selected patients.

Personalized strategy of therapy using histology, immunohistochemistry and molecular biology is actually a subject of increased interest. Wan et al found that incomplete RFA promoted expression of HSP70/HIF- α in experimental nude mice model with xenograft of cell tumor (57). Combination of RFA and treatment targeting HSP70/HIF- α was associated with a synergistic reduction of tumor growth compare to RFA alone (57). The authors concluded that accelerated proliferation and angiogenesis of lung carcinoma following RFA treatment was induced by HSP70/HIF- α . This study shows theoretical basis for the use of combined therapies for lung cancer treatment.

VI/ Conclusion

The use of 17-G needles for radiofrequency ablation of lung nodules is safe with a lower rate of complications than in studies using larger needles. The threshold for complete ablation was 27 mm slightly lower than previously reported. Median OS was 29.8 months, overall survival rates at 1, 2, 3, 4 and 5 years were 93%, 71%, 58%, 39% and 31% respectively. Local recurrence of ablated nodule was higher than expected 19% at 16.1 ± 8.7 months and 21.4% at the end of follow up. The majority of our patients had extra pulmonary progression 59.5%. These results tend to demonstrate the usefulness of combined treatment strategies. Systemic chemotherapy and ablation are needed to improve overall survival and allow therapeutic windows free of chemotherapy.

Tables and figures

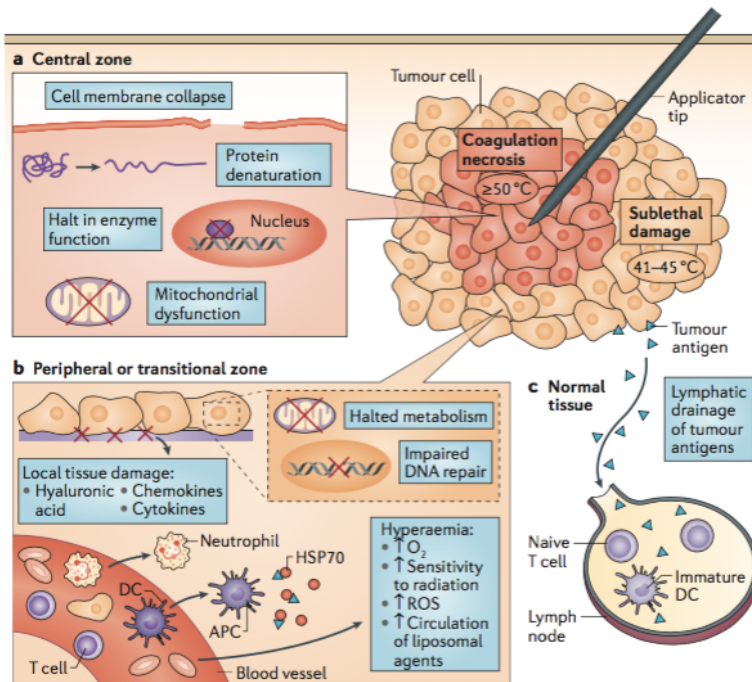


Figure 1

From Chu KS et al. Nature Review Cancer (5)

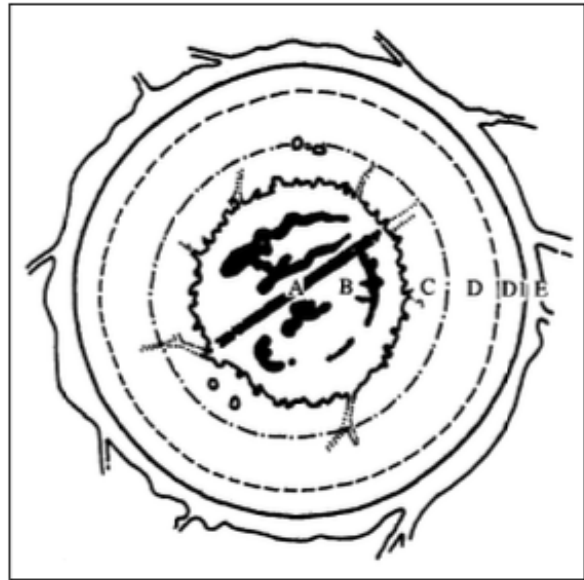
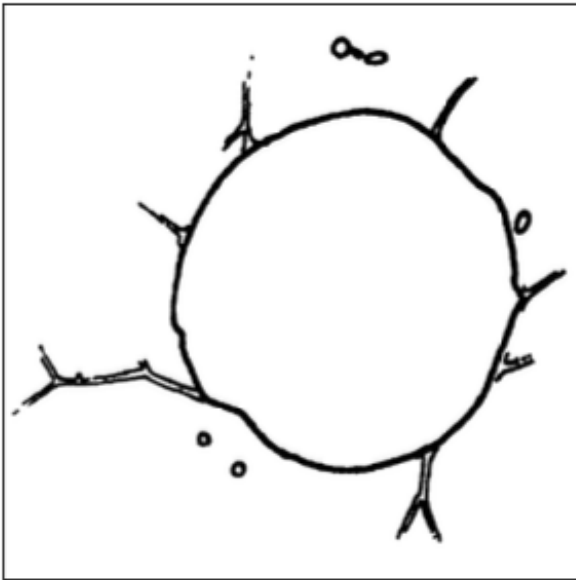


Figure 2

From Gadaleta et al. AJR (14)

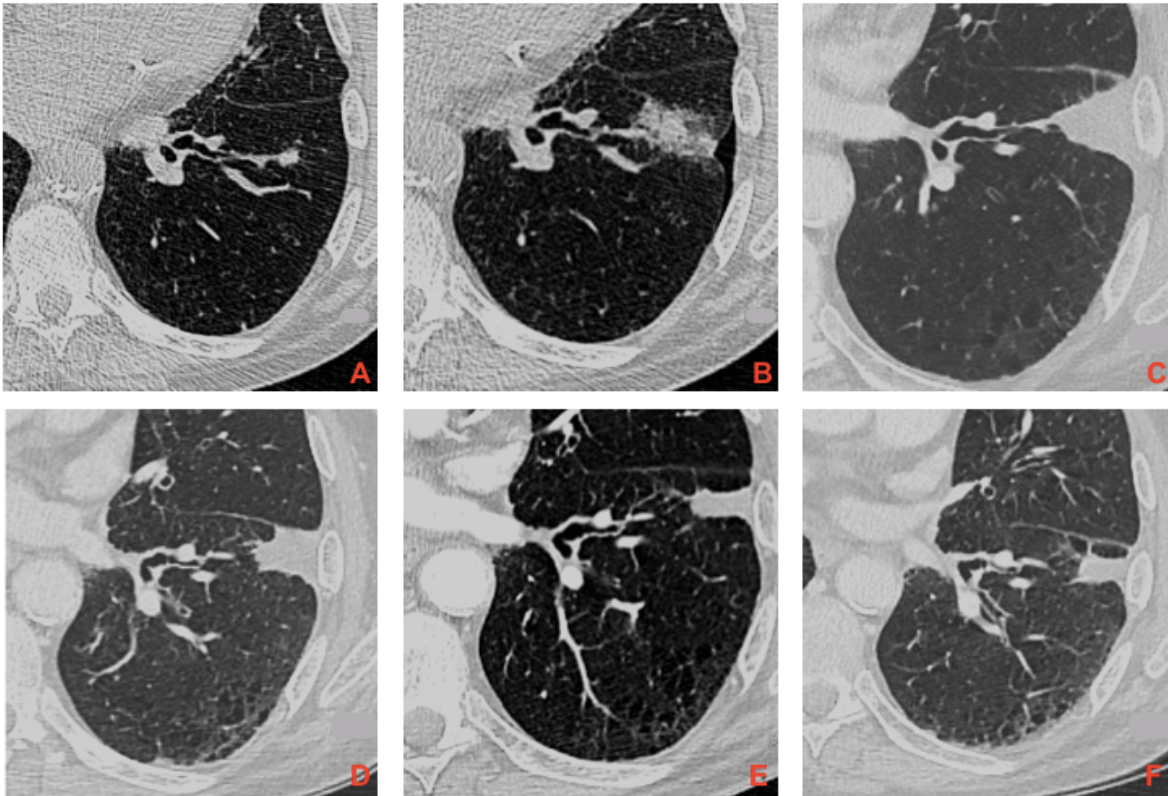


Figure 3

Radiofrequency of a lung metastasis of colorectal carcinoma. Typical evolution of the ablation zone after successful ablation. **A** Pre interventional aspect of the tumor. **B** Image obtained just after the ablation. **C** Image obtained 1 month after ablation showing a size increase of the ablation zone and a regression of ground glass opacity. **D** image obtained at 3 months, **E** image obtained at 6 months and **F** one year after ablation showing a continuous contraction of the ablation zone.

Table 1 Demographics

	n	%
Patients	42	100
Gender		
Male	25	59
Female	17	41
Type of tumor		
Primary lung cancer	5	12
Adenocarcinome	2	5
Epidermoid	3	7
Metastases	37	88
Colorectal	19	45
Breast	5	12
Kidney	4	9.5
Head and neck	4	9.5
Lung	2	5
Miscellaneous	3	7
Previous lung surgery		
Yes	13	31
No	29	69
Prior systemic chemotherapy		
Yes	26	62
No	16	38

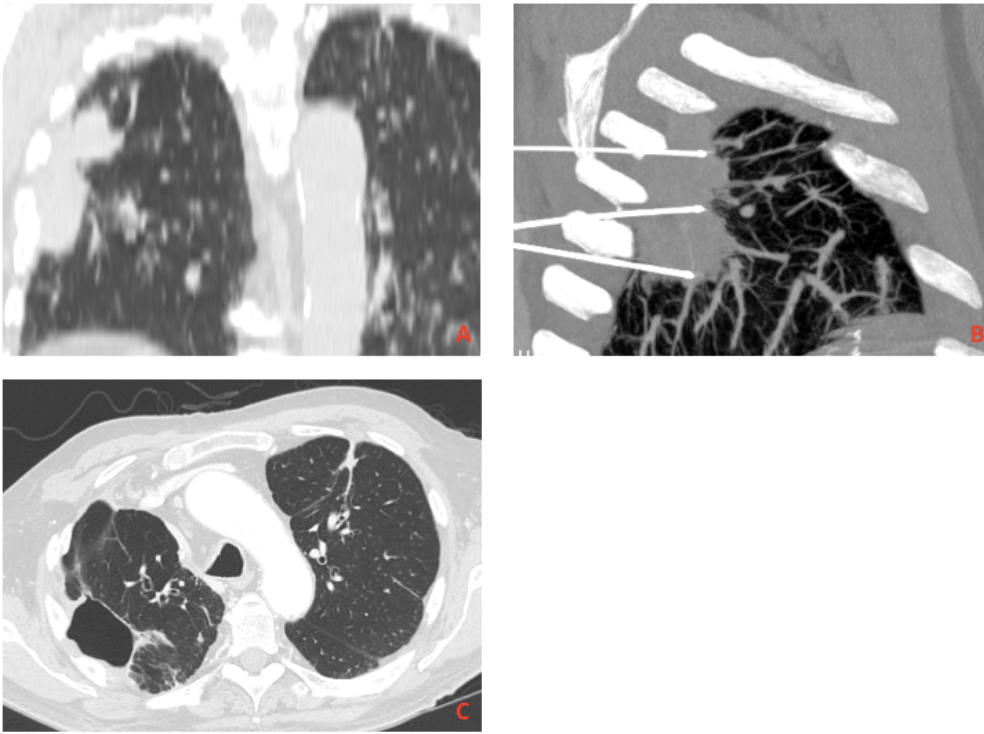


Figure 4

Radiofrequency of the longest lesion. **A** Pre-interventional CT demonstrates a large tumor (6-cm in long axis) adjacent to the pleura. **B** CT control during RFA, demonstrates the satisfactory position of the three electrodes inserted inside the lesion. **C** Successful CT control during the follow up with cavitation of the treated lesion.

Table 2 Adverse events

	CTCAE grade	patients (n)	(%)	No.(%) of RFA Sessions
Major				
Pneumothorax (chest drain)	3	1	2%	1.9%
Hemoptysis	3	2	5%	3.9%
Minor				
Pneumothorax (needle aspiration)	2	1	2%	1.9%
Pneumothorax (no treatment)	1	12	29%	23%
Pleural effusion	1	1	2%	1.9%
Alveolar hemorrhage	1	16	38%	31%

Table 3 Imaging follow up

	Time (months)	patients (n)	mean longest diameter (mm)	rate (%)	p
Pretreatment CT	-	42	22.7 (6.1)	-	-
CT 1	2.2 (1.8)	42	31.5 (8.3)	↑ + 44 (36)	0.0001
CT 2	6.8 (4.4)	41	27.6 (11.8)	↑ + 23 (30)	0.0001
CT 3	11.9 (5.3)	37	22.7 (11.9)	↓ -2 (37)	ns
CT 4	17 (6.0)	23	17.5 (8.4)	↓ -19 (33)	0.002

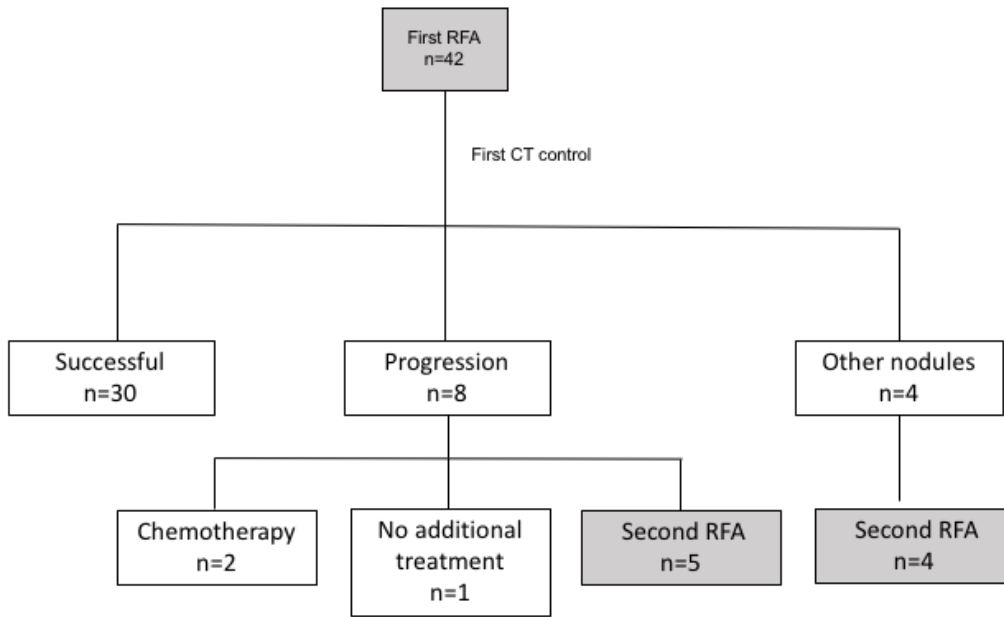


Figure 5 . Flow diagram showing courses of treatment.

Author, year*	Technique	Electrode (G)	procedures (n)	Death**	Pneumothorax	Severe Pneumothorax	Pleural effusion	Severe pleural effusion	Hemoptysis (P), hemorrhage (H)
Lencioni, 2008	RFA	15G	137	0	40%	19.7%	11%	3%	2% (H)
De Baere, 2015	RFA	15G and 17G (3%)	642	2	67%	38.7%	-	-	0.3% (hemothorax)
Vogl, 2016	RFA	14G	65	0	20%	7.6%	33.8%	-	7.6% (P), 10.7% (H)
Kashima, 2011	RFA	17G	1000	4	46.1%	1.6%***	2.3%	-	6% (H)
Wolf, 2008	MWA	14.5G	66	1	39%	12%	-	-	6% (H)
Zheng, 2014	MWA	14G	204	1	-	15.7%	-	2.9%	-
	RFA	17G	51	0	27%	2%	1.9%	-	3.9% (P), 31% (H)

Table 4 Complications after thermoablation

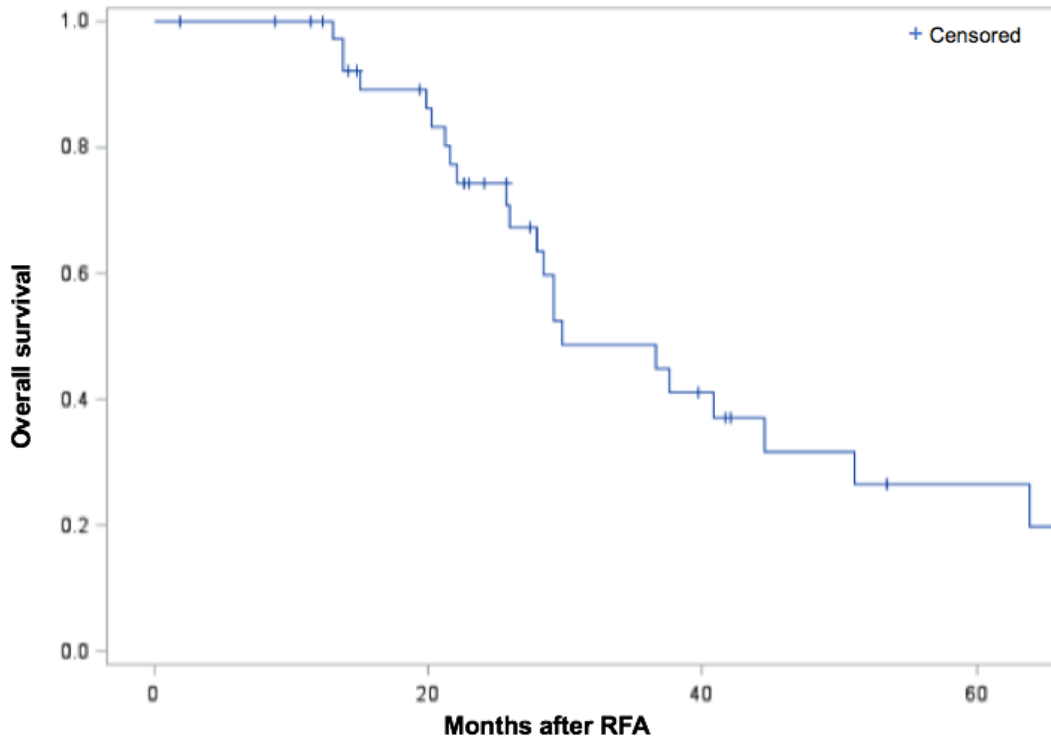


Figure 6 Overall survival curve of patients with primary or secondary pulmonary malignancies who received RFA.

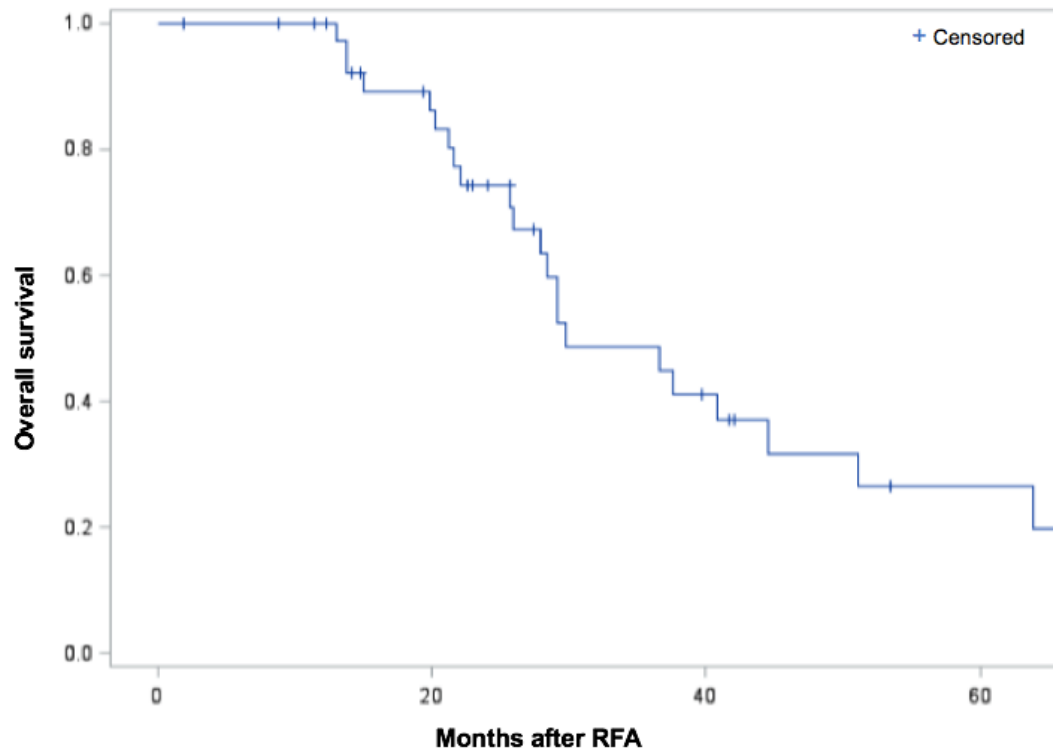


Figure 7 Overall survival without progression curve of patient with primary or secondary pulmonary malignancies who received RFA.

Bibliography

1. Hoffman PC, Mauer AM, Vokes EE. Lung cancer. *Lancet* 2000; 355:479-85
2. Dupuy DE, Zagoria RJ, Akerley W, Mayo-Smith WW, Kavanagh PV, Safran H. Percutaneous radiofrequency ablation of malignancies in the lung. *AJR* 2000;174:57-59.
3. Jaskolka JD, Kachura JR, Hwang DM, Tsao MS, Waddell TK, Asch MR, et al. Pathologic assessment of radiofrequency ablation of pulmonary metastases. *JVIR* 2010; 21:1689-1696.
4. Alexander ES, Dupuy DE. Lung cancer ablation: technologies and techniques. *Semin Interv Radiol* 2013; 30:141-150
5. Mouli SK, Kurilova I, Sofocleous CT, Lewandowski RJ. The Role of Percutaneous Image-Guided Thermal Ablation for the Treatment of Pulmonary Malignancies *AJR* 2017; 209:740-751
6. Gillams AR, Lees WR. Radiofrequency ablation of lung metastases: factors influencing success. *Eur Radiol* 2008; 18:672-667
7. Ye X, Fan W, Wang H, Wang J, Wang Z, Gu S, et al. Expert consensus workshop report: Guidelines for thermal ablation of primary and metastatic lung tumors (2018 edition). *J Cancer Res Ther* 2018; 14:730-744
8. Cazzato RL, Battistuzzi J-B, Catena V, Grasso RF, Zobel BB, Schena E, et al. Cone-Beam Computed Tomography (CBCT) Versus CT in Lung Ablation Procedure: Which is Faster? *Cardiovasc Intervent Radiol* 2015; 38:1231-1236
9. Chu KF, Dupuy DE. Thermal ablation of tumours: biological mechanisms and advances in therapy. *Nat Rev Cancer* 2014; 14:199-208
10. Abtin FG, Eradat J, Gutierrez AJ, Lee C, Fishbein MC, Suh RD. Radiofrequency ablation of lung tumors: imaging features of the postablation zone. *Radiographics* 2012; 32:947-969
11. Anderson EM, Lees WR, Gillams AR. Early indicators of treatment success after percutaneous radiofrequency of pulmonary tumors. *Cardiovasc Intervent Radiol* 2009; 32:478-483
12. Suh RD, Wallace AB, Sheehan RE, Heinze SB, Goldin JG. Unresectable pulmonary malignancies: CT-guided percutaneous radiofrequency ablation--preliminary results. *Radiology* 2003; 229:821-829
13. Miao Y, Ni Y, Bosmans H, Yu J, Vaninbroukx J, Dymarkowski S, et al. Radiofrequency ablation for eradication of pulmonary tumor in rabbits. *J Surg Res* 2001; 99:265-271
14. Gadaleta C, Mattioli V, Colucci G, Cramarossa A, Lorusso V, Canniello E, et al. Radiofrequency ablation of 40 lung neoplasms: preliminary results. *AJR* 2004; 183:361-368
15. Bojarski JD, Dupuy DE, Mayo-Smith WW. CT imaging findings of pulmonary neoplasms after treatment with radiofrequency ablation: results in 32 tumors. *AJR* 2005; 185:466-471

16. Kuban JD, Tam AL, Huang SY, Ensor JE, Philip AS, Chen GJ, et al. The Effect of Needle Gauge on the Risk of Pneumothorax and Chest Tube Placement After Percutaneous Computed Tomographic (CT)-Guided Lung Biopsy. *Cardiovasc Intervent Radiol* 2015; 38:1595-1602
17. Zhu JC, Yan TD, Morris DL. A systematic review of radiofrequency ablation for lung tumors. *Ann Surg Oncol* 2008; 15:1765-1774
18. de Baère T, Aupérin A, Deschamps F, Chevallier P, Gaubert Y, Boige V, et al. Radiofrequency ablation is a valid treatment option for lung metastases: experience in 566 patients with 1037 metastases. *Ann Oncol* 2015; 26:987-991
19. Gillams AR, Lees WR. Analysis of the factors associated with radiofrequency ablation-induced pneumothorax. *Clin Radiol* 2007; 62:639-644.
20. Kashima M, Yamakado K, Takaki H, Kodama H, Yamada T, Uraki J, et al. Complications after 1000 lung radiofrequency ablation sessions in 420 patients: a single center's experiences. *AJR* 2011; 197:576-580
21. Yoshimatsu R, Yamagami T, Terayama K, Matsumoto T, Miura H, Nishimura T. Delayed and recurrent pneumothorax after radiofrequency ablation of lung tumors. *Chest* 2009; 135:1002-1009
22. Steinke K, King J, Glenn D, Morris DL. Pulmonary hemorrhage during percutaneous radiofrequency ablation: a more frequent complication than assumed? *Interact Cardiovasc Thorac Surg* 2003; 2:462-465
23. Steinke K, King J, Glenn D, Morris DL. Radiologic appearance and complications of percutaneous computed tomography-guided radiofrequency-ablated pulmonary metastases from colorectal carcinoma. *J Comput Assist Tomogr* 2003; 27:750-757
24. Sakurai J, Mimura H, Gobara H, Hiraki T, Kanazawa S. Pulmonary artery pseudoaneurysm related to radiofrequency ablation of lung tumor. *Cardiovasc Intervent Radiol* 2010; 33:413-416.
25. Yamakado K, Takaki H, Takao M, Murashima S, Kodama H, Kashima M, et al. Massive hemoptysis from pulmonary artery pseudoaneurysm caused by lung radiofrequency ablation: successful treatment by coil embolization. *Cardiovasc Intervent Radiol* 2010; 33:410-412
26. Smith SL, Jennings PE. Lung radiofrequency and microwave ablation: a review of indications, techniques and post-procedural imaging appearances. *Br J Radiol* 2015; 88:20140598.
27. Planché O, Teriitehau C, Boudabous S, Robinson JM, Rao P, Deschamps F, et al. In vivo evaluation of lung microwave ablation in a porcine tumor mimic model. *Cardiovasc Intervent Radiol* 2013; 36:221-228
28. Vogl TJ, Eckert R, Naguib NNN, Beeres M, Gruber-Rouh T, Nour-Eldin N-EA. Thermal Ablation of Colorectal Lung Metastases: Retrospective Comparison Among Laser-Induced Thermoablation, Radiofrequency Ablation, and Microwave Ablation. *AJR* 2016; 207:1340-1349
29. Joseph B, Supe SS, Ramachandra A. Cyberknife: A double edged sword? *Rep Pract*

30. Bilal H, Mahmood S, Rajashanker B, Shah R. Is radiofrequency ablation more effective than stereotactic ablative radiotherapy in patients with early stage medically inoperable non-small cell lung cancer? *Interact Cardiovasc Thorac Surg* 2012;15:258-265
31. Hiraki T, Gobara H, Fujiwara H, Ishii H, Tomita K, Uka M, et al. Lung Cancer Ablation: Complications. *Semin Interv Radiol* 2013; 30:169-175
32. Lencioni R, Crocetti L, Cioni R, Suh R, Glenn D, Regge D, et al. Response to radiofrequency ablation of pulmonary tumours: a prospective, intention-to-treat, multicentre clinical trial (the RAPTURE study). *Lancet Oncol* 2008; 9:621-628
33. Wolf FJ, Grand DJ, Machan JT, Dipetrillo TA, Mayo-Smith WW, Dupuy DE. Microwave ablation of lung malignancies: effectiveness, CT findings, and safety in 50 patients. *Radiology* 2008; 247:871-879
34. Nour-Eldin N-EA, Exner S, Al-Subhi M, Naguib NNN, Kaltenbach B, Roman A, et al. Ablation therapy of non-colorectal cancer lung metastases: retrospective analysis of tumour response post-laser-induced interstitial thermotherapy (LITT), radiofrequency ablation (RFA) and microwave ablation (MWA). *Int J Hyperth* 2017; 33:820-829
35. Trumm CG, Häussler SM, Muacevic A, Stahl R, Stintzing S, Paprottka PM, et al. CT fluoroscopy-guided percutaneous fiducial marker placement for CyberKnife stereotactic radiosurgery: technical results and complications in 222 consecutive procedures. *J Vasc Interv Radiol* 2014; 25:760-768
36. Heerink WJ, de Bock GH, de Jonge GJ, Groen HJM, Vliegenthart R, Oudkerk M. Complication rates of CT-guided transthoracic lung biopsy: meta-analysis. *Eur Radiol* 2017; 27:138-148
37. Chassagnon G, Gregory J, Al Ahmar M, Magdeleinat P, Legmann P, Coste J, et al. Risk factors for hemoptysis complicating 17–18 gauge CT-guided transthoracic needle core biopsy: multivariate analysis of 249 procedures. *Diagn Interv Radiol* 2017; 23:347-353
38. Hiraki T, Mimura H, Gobara H, Sano Y, Fujiwara H, Iguchi T, et al. Two cases of needle-tract seeding after percutaneous radiofrequency ablation for lung cancer. *J Vasc Interv Radiol* 2009; 20:415-418
39. Howington JA, Blum MG, Chang AC, Balekian AA, Murthy SC. Treatment of stage I and II non-small cell lung cancer: Diagnosis and management of lung cancer, 3rd ed: American College of Chest Physicians evidence-based clinical practice guidelines. *Chest* 2013; 143:278-313
40. Thomford NR, Woolner LB, Clagett OT. THE SURGICAL TREATMENT OF METASTATIC TUMORS IN THE LUNGS. *J Thorac Cardiovasc Surg* 1965; 49:357-363
41. Erhunmwunsee L, Tong BC. Preoperative Evaluation and Indications for Pulmonary Metastasectomy. *Thorac Surg Clin* 2016; 26:7-12
42. Pastorino U, Buyse M, Friedel G, Ginsberg RJ, Girard P, Goldstraw P, et al. Long-term results of lung metastasectomy: Prognostic analyses based on 5206 cases. *J Thorac Cardiovasc Surg* 1997; 113:37-49

43. Gonzalez M, Poncet A, Combescure C, Robert J, Ris HB, Gervaz P. Risk factors for survival after lung metastasectomy in colorectal cancer patients: a systematic review and meta-analysis. *Ann Surg Oncol* 2013; 20:572-579
44. Chua TC, Thornbury K, Saxena A, Liauw W, Glenn D, Zhao J, et al. Radiofrequency ablation as an adjunct to systemic chemotherapy for colorectal pulmonary metastases. *Cancer* 2010; 116:2106-2114
45. Simon CJ, Dupuy DE, DiPetrillo TA, Safran HP, Grieco CA, Ng T, et al. Pulmonary radiofrequency ablation: long-term safety and efficacy in 153 patients. *Radiology*. 2007; 243:268-275
46. Vogl TJ, Naguib NNN, Gruber-Rouh T, Koitka K, Lehnert T, Nour-Eldin N-EA. Microwave ablation therapy: clinical utility in treatment of pulmonary metastases. *Radiology* 2011; 261:643-651
47. Lu Q, Cao W, Huang L, Wan Y, Liu T, Cheng Q, et al. CT-guided percutaneous microwave ablation of pulmonary malignancies: Results in 69 cases. *World J Surg Oncol* 2012; 10:80
48. Vogl TJ, Nour-Eldin N-EA, Albrecht MH, Kaltenbach B, Hohenforst-Schmidt W, Lin H, et al. Thermal Ablation of Lung Tumors: Focus on Microwave Ablation. *ROFO Fortschr Geb Rontgenstr Nuklearmed* 2017; 189:828-843
49. Chang JY, Senan S, Paul MA, Mehran RJ, Louie AV, Balter P, et al. Stereotactic ablative radiotherapy versus lobectomy for operable stage I non-small-cell lung cancer: a pooled analysis of two randomised trials. *Lancet Oncol* 2015; 16:630-637
50. Fode MM, Høyer M. Survival and prognostic factors in 321 patients treated with stereotactic body radiotherapy for oligo-metastases. *Radiother Oncol J* 2015; 114:155-160
51. Jingu K, Matsushita H, Yamamoto T, Umezawa R, Ishikawa Y, Takahashi N, et al. Stereotactic Radiotherapy for Pulmonary Oligometastases From Colorectal Cancer: A Systematic Review and Meta-Analysis. *Technol Cancer Res Treat* 2018
52. van Laarhoven HWM, Kaanders JHAM, Lok J, Peeters WJM, Rijken PFJW, Wiering B, et al. Hypoxia in relation to vasculature and proliferation in liver metastases in patients with colorectal cancer. *Int J Radiat Oncol Biol Phys* 2006; 64:473-482.
53. Vyfhuis MAL, Rice S, Remick J, Mossahebi S, Badiyan S, Mohindra P, et al. Reirradiation for locoregionally recurrent non-small cell lung cancer. *J Thorac Dis* 2018; 10:2522-2536.
54. Suzawa N, Yamakado K, Takao M, Taguchi O, Yamada T, Takeda K. Detection of local tumor progression by (18)F-FDG PET/CT following lung radiofrequency ablation: PET versus CT. *Clin Nucl Med* 2013; 38:166-170
55. Higuchi M, Suzuki H, Gotoh M. Role of PET/Computed Tomography in Radiofrequency Ablation for Malignant Pulmonary Tumors. *PET Clin* 2016; 11:47-55
56. Higuchi M, Honjo H, Shigihara T, Shishido F, Suzuki H, Gotoh M. A phase II study of radiofrequency ablation therapy for thoracic malignancies with evaluation by FDG-PET. *J Cancer Res Clin Oncol* 2014; 140:1957-1963

57. Wan J, Wu W, Huang Y, Ge W, Liu S. Incomplete radiofrequency ablation accelerates proliferation and angiogenesis of residual lung carcinomas via HSP70/HIF-1 α . *Oncol Rep* 2016; 36:659-368

Appendix

Time (years)	Patients	Censored	Deaths	n=V-C	(n-D)/n	Survival rates
0_1	42	0	3	42	0,92857143	0,92857143
1_2	39	9	7	30	0,76666667	0,71190476
2_3	23	7	3	16	0,8125	0,57842262
3_4	13	4	3	9	0,66666667	0,38561508
4_5	6	1	1	5	0,8	0,30849206
5_6	4	1	0	3	1	0,30849206
6_7	3	0	2	3	0,33333333	0,10283069
7_8	1	0	0	1	1	0,10283069
8_9	1	0	0	1	1	0,10283069
9_10	1	0	1	1	0	0

Table 5 Overall Survival rates

« Par délibération de son Conseil en date du 10 Novembre 1972, l'Université n'entend donner aucune approbation ni improbation aux opinions émises dans les thèses ou mémoires. Ces opinions doivent être considérées comme propres à leurs auteurs ».

VU, le Président de Thèse

VU, le Doyen de la Faculté

VU et permis d'imprimer
en référence à la délibération
du Conseil d'Université
en date du 14 Décembre 1973

Pour le Président
de l'Université de CAEN et P.O

Le Doyen

ANNEE DE SOUTENANCE : 2018

SAUTIERE JEAN-BAPTISTE

TITRE DE LA THESE :

Safety and long term efficacy of radiofrequency ablation for lung tumors.

ABSTRACT :

Background: The purpose of this study was to evaluate the safety and long-term efficacy of radiofrequency ablation in lung tumors using small 17-gauge needles.

Materials and methods: All patients with lung tumors treated using radiofrequency ablation performed with 17-gauge needles between June 2005 and October 2008, were enrolled in the study. All procedures were performed under general anesthesia. After RFA procedure, patients underwent clinical and imaging follow-up at regular intervals up to 10 years.

Results: Forty-two consecutive patients with 57 lung tumors including 5 patients with lung carcinoma, 19 patients with colorectal carcinoma metastasis and 18 patients with metastasis from other origin met the inclusion criteria. Median tumor size was 24.4 mm (range: 11-60 mm). Three patients (5.8%) presented with major complications including hemoptysis treated conservatively (n=2) and pneumothorax requiring chest tube placement (n=1). Univariate analysis demonstrated that a tumor diameter of 27.0 ± 7.5 mm vs 21.5 ± 5.1 mm was a predictive factor of progression (p=0.02).

After 16.1 ± 8.7 months, lung-free and progression free survival were 46% and 41%, respectively. Median overall survival was 29.8 months (1.8 -154.4) and median overall survival without progression were 25.6 months. Overall survival rates at 1-, 2-, 3-, 4- and 5- years were 93%, 71%, 58%, 39% and 31%, respectively.

Conclusion: Radiofrequency ablation using small 17-gauge needles is a valuable treatment option of small size lung tumors (<27 mm) and is associated with a low rate of complications.

KEY WORDS:

- Radiofrequency
- Lung tumors
- Complication
- Outcome
- Survival

RESUME :

Introduction: L'objectif de cette étude était d'évaluer l'efficacité et le taux de complication de la radiofréquence pulmonaire (RF) dans le traitement des lésions primitives et secondaires.

Matériels et méthodes: Entre juin 2005 et octobre 2008, les patients atteints de tumeurs pulmonaires traités par RF ont été inclus dans une étude prospective mono centrique. Toutes les RF étaient réalisées sous anesthésie générale. Les patients bénéficiaient d'un suivi clinique et radiologique à 3, 6, 12, 15 mois, puis tous les 6 mois jusque dix ans après la RF.

Résultats: Cinquante-six RF ont été réalisées sur 42 patients avec 57 tumeurs. Cinq patients étaient porteurs de primitif pulmonaire, 19 patients de métastases de cancer colo-rectal et 18 patients de métastases issues d'autre primitif. La taille médiane des tumeurs était de 24.4mm (11-60mm). Chez les patients présentant une récurrence locale la taille de la tumeur était de 27.0 ± 7.5 mm contre 21.5 ± 5.1 mm chez les patients sans récurrence locale. Le suivi moyen était de 20.5 ± 11.2 mois. Après 16.1 ± 8.7 mois la survie sans progression pulmonaire était de 46%, la survie sans progression était de 41% et la survie sans progression à distance était de 88%.

La médiane de survie globale était de 29.8 mois (1.8 -154.4). Les taux de survie globale étaient respectivement de 93%, 71%, 58%, 39% et 31% à 1, 2, 3, 4 et 5 ans après RF. Le taux de complications majeures (pneumothorax, hémoptysie) était de 5,8%.

Conclusion: La RF des lésions néoplasiques pulmonaires avec une aiguille 17G apparait dans notre étude comme un traitement efficace avec un faible taux de complications majeures.

MOT CLES :

- Radiofréquence
- Tumeur du poumon
- Complication
- Survie