



HAL
open science

Percutaneous CT-guided biopsy of lytic bone lesions in patients clinically suspected of lung cancer: diagnostic performances for pathological diagnosis and molecular testing

Stéphane Adam Asfari

► **To cite this version:**

Stéphane Adam Asfari. Percutaneous CT-guided biopsy of lytic bone lesions in patients clinically suspected of lung cancer: diagnostic performances for pathological diagnosis and molecular testing. Human health and pathology. 2019. dumas-02929561

HAL Id: dumas-02929561

<https://dumas.ccsd.cnrs.fr/dumas-02929561>

Submitted on 3 Sep 2020

HAL is a multi-disciplinary open access archive for the deposit and dissemination of scientific research documents, whether they are published or not. The documents may come from teaching and research institutions in France or abroad, or from public or private research centers.

L'archive ouverte pluridisciplinaire **HAL**, est destinée au dépôt et à la diffusion de documents scientifiques de niveau recherche, publiés ou non, émanant des établissements d'enseignement et de recherche français ou étrangers, des laboratoires publics ou privés.



AVERTISSEMENT

Ce document est le fruit d'un long travail approuvé par le jury de soutenance et mis à disposition de l'ensemble de la communauté universitaire élargie.

Il n'a pas été réévalué depuis la date de soutenance.

Il est soumis à la propriété intellectuelle de l'auteur. Ceci implique une obligation de citation et de référencement lors de l'utilisation de ce document.

D'autre part, toute contrefaçon, plagiat, reproduction illicite encourt une poursuite pénale.

Contact au SID de Grenoble :
bump-theses@univ-grenoble-alpes.fr

LIENS

Code de la Propriété Intellectuelle. articles L 122. 4
Code de la Propriété Intellectuelle. articles L 335.2- L 335.10

<http://www.cfcopies.com/juridique/droit-auteur>

Année : 2019

**PERCUTANEOUS CT-GUIDED BIOPSY OF LYTIC BONE LESIONS IN PATIENTS
CLINICALLY SUSPECTED OF LUNG CANCER: DIAGNOSTIC PERFORMANCES
FOR PATHOLOGICAL DIAGNOSIS AND MOLECULAR TESTING**

THÈSE
PRÉSENTÉE POUR L'OBTENTION DU TITRE DE DOCTEUR EN MÉDECINE
DIPLOME D'ÉTAT

Stéphane Adam ASFARI

[Données à caractère personnel]

THÈSE SOUTENUE PUBLIQUEMENT À LA FACULTÉ DE MÉDECINE DE GRENOBLE

Le : 07/10/2019

DEVANT LE JURY COMPOSÉ DE

Président du jury :

M. Le Professeur Gilbert R. FERRETTI (directeur de thèse)

Membres :

Mme. Le Docteur Anne-Claire TOFFART

Mme. Le Docteur Anne Mc LEER

M. Le Docteur Olivier STEPHANOV

L'UFR de Médecine de Grenoble n'entend donner aucune approbation ni improbation aux opinions émises dans les thèses ; ces opinions sont considérées comme propres à leurs auteurs.

Doyen de la Faculté : **Pr. Patrice MORAND**

Année 2019-2020

ENSEIGNANTS DE L'UFR DE MEDECINE

CORPS	NOM-PRENOM	Discipline universitaire
PU-PH	ALBALADEJO Pierre	Anesthésiologie-réanimation et médecine péri-opératoire
PU-PH	APTEL Florent	Ophthalmologie
PU-PH	ARVIEUX-BARTHELEMY Catherine	Chirurgie viscérale et digestive
PU-PH	BAILLET Athan	Rhumatologie
PU-PH	BARONE-ROCHETTE Gilles	Cardiologie
PU-PH	BAYAT Sam	Physiologie
MCF Ass.MG	BENDAMENE Farouk	Médecine Générale
PU-PH	BENHAMOU Pierre Yves	Endocrinologie, diabète et maladies métaboliques
PU-PH	BERGER François	Biologie cellulaire
MCU-PH	BIDART-COUTTON Marie	Biologie cellulaire
PU-PH	BLAISE Sophie	Chirurgie vasculaire ; médecine vasculaire
MCU-PH	BOISSET Sandrine	Bactériologie-virologie
PU-PH	BOLLA Michel	Cancérologie-Radiothérapie
PU-PH	BONAZ Bruno	Gastroentérologie, hépatologie, addictologie
PU-PH	BONNETERRE Vincent	Médecine et santé au travail
PU-PH	BOREL Anne-Laure	Nutrition
PU-PH	BOSSON Jean-Luc	Biostatistiques, informatique médicale et technologies de communication
MCU-PH	BOTTARI Serge	Biologie cellulaire
PR Ass.MG	BOUCHAUD Jacques	Médecine Générale
PU-PH	BOUGEROL Thierry	Psychiatrie d'adultes
PU-PH	BOUILLET Laurence	Médecine interne
MCU-PH	BOUSSAT Bastien	Epidémiologie, économie de la santé et prévention
PU-PH	BOUZAT Pierre	Anesthésiologie-réanimation et médecine péri-opératoire
PU-PH	BRAMBILLA Christian	Pneumologie
PU-PH	BRAMBILLA Elisabeth	Anatomie et cytologie pathologiques
MCU-PH	BRENIER-PINCHART Marie Pierre	Parasitologie et mycologie
PU-PH	BRICAULT Ivan	Radiologie et imagerie médicale
PU-PH	BRICHON Pierre-Yves	Chirurgie thoracique et cardiovasculaire
MCU-PH	BRIOT Raphaël	Thérapeutique-médecine de la douleur
MCU-PH	BROUILLET Sophie	Biologie et médecine du développement et de la reproduction
PU-PH	CAHN Jean-Yves	Hématologie
PU-PH	CARPENTIER Patrick	Chirurgie vasculaire, médecine vasculaire
PR Ass.MG	CARRILLO Yannick	Médecine Générale
PU-PH	CESBRON Jean-Yves	Immunologie
PU-PH	CHABARDES Stephan	Neurochirurgie
PU-PH	CHABRE Olivier	Endocrinologie, diabète et maladies métaboliques
PU-PH	CHAFFANJON Philippe	Anatomie

CORPS	NOM-PRENOM	Discipline universitaire
PU-PH	CHARLES Julie	Dermato-vénérologie
MCF Ass.MG	CHAUVET Marion	Médecine Générale
PU-PH	CHAVANON Olivier	Chirurgie thoracique et cardio- vasculaire
PU-PH	CHIQUET Christophe	Ophthalmologie
PU-PH	CHIRICA Mircea	Chirurgie viscérale et digestive
PU-PH	CINQUIN Philippe	Biostatistiques, informatique médicale et technologies de communication
MCU-PH	CLAVARINO Giovanna	Immunologie
PU-PH	COHEN Olivier	Histologie, embryologie et cytogénétique
PU-PH	COURVOISIER Aurélien	Chirurgie infantile
PU-PH	COUTTON Charles	Génétique
PU-PH	COUTURIER Pascal	Gériatrie et biologie du vieillissement
PU-PH	CRACOWSKI Jean-Luc	Pharmacologie fondamentale, pharmacologie clinique
PU-PH	CURE Hervé	Cancérologie
PU-PH	DEBATY Guillaume	Médecine d'Urgence
PU-PH	DEBILLON Thierry	Pédiatrie
PU-PH	DECAENS Thomas	Gastro-entérologie, Hépatologie
PU-PH	DEMATTEIS Maurice	Addictologie
PU-PH	DEMONGEOT Jacques	Biostatistiques, informatique médicale et technologies de communication
MCU-PH	DERANSART Colin	Physiologie
PU-PH	DESCOTES Jean-Luc	Urologie
PU-PH	DETANTE Olivier	Neurologie
MCU-PH	DIETERICH Klaus	Génétique
MCU-PH	DOUTRELEAU Stéphane	Physiologie
MCU-PH	DUMESTRE-PERARD Chantal	Immunologie
PU-PH	EPAULARD Olivier	Maladies infectieuses ; Maladies tropicales
PU-PH	ESTEVE François	Biophysique et médecine nucléaire
MCU-PH	EYSSERIC Hélène	Médecine légale et droit de la santé
PU-PH	FAUCHERON Jean-Luc	Chirurgie viscérale et digestive
MCU-PH	FAURE Julien	Biochimie et biologie moléculaire
PU-PH	FERRETTI Gilbert	Radiologie et imagerie médicale
PU-PH	FEUERSTEIN Claude	Physiologie
PU-PH	FONTAINE Éric	Nutrition
PU-PH	FRANCOIS Patrice	Epidémiologie, économie de la santé et prévention
MCU-MG	GABOREAU Yoann	Médecine Générale
PU-PH	GARBAN Frédéric	Hématologie ; Transfusion
PU-PH	GAUDIN Philippe	Rhumatologie
PU-PH	GAVAZZI Gaëtan	Gériatrie et biologie du vieillissement
PU-PH	GAY Emmanuel	Neurochirurgie
MCU-PH	GILLOIS Pierre	Biostatistiques, informatique médicale et technologies de communication
PU-PH	GIOT Jean-Philippe	Chirurgie plastique, reconstructrice et esthétique
MCU-PH	GRAND Sylvie	Radiologie et imagerie médicale
PU-PH	GRIFFET Jacques	Chirurgie infantile
MCU-PH	GUZUN Rita	Nutrition
PU-PH	HAINAUT Pierre	Biochimie et biologie moléculaire
PU-PH	HALIMI Serge	Nutrition
PU-PH	HENNEBICQ Sylviane	Biologie et médecine du développement et de la reproduction
PU-PH	HOFFMANN Pascale	Gynécologie-obstétrique

CORPS	NOM-PRENOM	Discipline universitaire
PU-PH	HOMMEL Marc	Neurologie
PU-MG	IMBERT Patrick	Médecine Générale
PU-PH	JOUK Pierre-Simon	Génétique
PU-PH	KAHANE Philippe	Physiologie
MCU-PH	KASTLER Adrian	Radiologie et imagerie médicale
PU-PH	KRAINIK Alexandre	Radiologie et imagerie médicale
PU-PH	LABARERE José	Epidémiologie, économie de la santé et prévention
MCU-PH	LABLANCHE Sandrine	Endocrinologie, diabète et maladies métaboliques
MCU-PH	LANDELLE Caroline	Bactériologie – virologie ; Hygiène hospitalière
PU-PH	LANTUEJOL Sylvie	Anatomie et cytologie pathologiques
MCU-PH	LARDY Bernard	Biochimie et biologie moléculaire
MCU - PH	LE GOUELLEC Audrey	Biochimie et biologie moléculaire
PU-PH	LECCIA Marie-Thérèse	Dermato-vénérologie
MCF Ass.MG	LEDOUX Jean-Nicolas	Médecine Générale
PU-PH	LEROY Vincent	Gastroentérologie ; hépatologie ; addictologie
PU-PH	LETOUBLON Christian	Chirurgie viscérale et digestive
PU-PH	LEVY Patrick	Physiologie
PU-PH	LONG Jean-Alexandre	Urologie
MCU-PH	LUPO Julien	Bactériologie-virologie
PU-PH	MAGNE Jean-Luc	Chirurgie vasculaire ; Médecine vasculaire
MCU-PH	MAIGNAN Maxime	Médecine d'urgence
PU-PH	MAITRE Anne	Médecine et santé au travail
MCU-PH	MALLARET Marie-Reine	Hygiène hospitalière
PU-PH	MALLION Jean-Michel	Cardiologie
MCU-PH	MARLU Raphaël	Hématologie ; Transfusion
MCU-PH	MAUBON Danièle	Parasitologie et mycologie
PU-PH	MAURIN Max	Bactériologie-virologie
MCU-PH	MC LEER Anne	Histologie, embryologie et cytogénétique
MCU-PH	MONDET Julie	Histologie, embryologie et cytogénétique
PU-PH	MORAND Patrice	Bactériologie-virologie
PU-PH	MOREAU-GAUDRY Alexandre	Biostatistiques, informatique médicale et technologies de communication
PU-PH	MORO Elena	Neurologie
PU-PH	MORO-SIBILOT Denis	Pneumologie
MCU-PH	MORTAMET Guillaume	Pédiatrie
PU-PH	MOUSSEAU Mireille	Cancérologie
PU-PH	MOUTET François	Chirurgie plastique, reconstructrice et esthétique ; brûlogie
MCF Ass.MG	ODDOU Christel	Médecine Générale
MCU-PH	PACLET Marie-Hélène	Biochimie et biologie moléculaire
PU-PH	PAILHE Régis	Chirurgie orthopédique et traumatologie
PU-PH	PALOMBI Olivier	Anatomie
PU-PH	PARK Sophie	Hématologie ; Transfusion
PU-PH	PASSAGGLIA Jean-Guy	Anatomie
PR Ass.MG	PAUMIER-DESBRIERES Françoise	Médecine Générale
PU-PH	PAYEN DE LA GARANDERIE Jean-François	Anesthésiologie-réanimation et médecine péri-opératoire
MCU-PH	PAYSANT François	Médecine légale et droit de la santé
MCU-PH	PELLETIER Laurent	Biologie cellulaire
PU-PH	PELLOUX Hervé	Parasitologie et mycologie

CORPS	NOM-PRENOM	Discipline universitaire
PU-PH	PEPIN Jean-Louis	Physiologie
PU-PH	PERENNOU Dominique	Médecine physique et de réadaptation
PU-PH	PERNOD Gilles	Médecine vasculaire
PU-PH	PIOLAT Christian	Chirurgie infantile
PU-PH	PISON Christophe	Pneumologie
PU-PH	PLANTAZ Dominique	Pédiatrie
PU-PH	POIGNARD Pascal	Bactériologie-virologie
PU-PH	POLACK Benoît	Hématologie
PU-PH	POLOSAN Mircea	Psychiatrie d'adultes
PU-PH	RAMBEAUD Jean-Jacques	Urologie
PU-PH	RAY Pierre	Biologie et médecine du développement et de la reproduction
MCU-PH	RENDU John	Biochimie et biologie moléculaire
MCU-PH	RIALLE Vincent	Biostatistiques, informatique médicale et technologies de communication
PU-PH	RIETHMULLER Didier	Gynécologie-obstétrique ; gynécologie médicale
PU-PH	RIGHINI Christian	Oto-rhino-laryngologie
PU-PH	ROMANET Jean Paul	Ophthalmologie
PU-PH	ROSTAING Lionel	Néphrologie
MCU-PH	ROUSTIT Matthieu	Pharmacologie fondamentale ; pharmacologie clinique ; addictologie
MCU-PH	ROUX-BUISSON Nathalie	Biochimie et biologie moléculaire
MCF Ass.MG	ROYER DE VERICOURT Guillaume	Médecine Générale
MCU-PH	RUBIO Amandine	Pédiatrie
PU-PH	SARAGAGLIA Dominique	Chirurgie orthopédique et traumatologie
MCU-PH	SATRE Véronique	Génétique
PU-PH	SAUDOU Frédéric	Biologie cellulaire
PU-PH	SCHMERBER Sébastien	Oto-rhino-laryngologie
PU-PH	SCHWEBEL Carole	Médecine intensive-réanimation
PU-PH	SCOLAN Virginie	Médecine légale et droit de la santé
MCU-PH	SEIGNEURIN Arnaud	Epidémiologie, économie de la santé et prévention
PU-PH	STAHL Jean-Paul	Maladies infectieuses ; Maladies tropicales
PU-PH	STANKE Françoise	Pharmacologie fondamentale
MCU-PH	STASIA Marie-José	Biochimie et biologie moléculaire
PU-PH	STURM Nathalie	Anatomie et cytologie pathologiques
PU-PH	TAMISIER Renaud	Physiologie
PU-PH	TERZI Nicolas	Médecine intensive-réanimation
MCU-PH	TOFFART Anne-Claire	Pneumologie
PU-PH	TONETTI Jérôme	Chirurgie orthopédique et traumatologie
PU-PH	TOUSSAINT Bertrand	Biochimie et biologie moléculaire
PU-PH	VANZETTO Gérald	Cardiologie
PU-PH	VUILLEZ Jean-Philippe	Biophysique et médecine nucléaire
PU-PH	WEIL Georges	Epidémiologie, économie de la santé et prévention
PU-PH	ZAOUI Philippe	Néphrologie
PU-PH	ZARSKI Jean-Pierre	Gastroentérologie ; hépatologie ; addictologie

PU-PH : Professeur des Universités - Praticiens Hospitaliers
MCU-PH : Maître de Conférences des Universités - Praticiens Hospitaliers
PU-MG : Professeur des Universités de Médecine Générale
MCU-MG : Maître de Conférences des Universités de Médecine Générale
PR Ass.MG : Professeur des Universités Associé de Médecine Générale
MCF Ass.MG : Maître de Conférences Associé de Médecine Générale

TABLES DES MATIERES

Résumé en français	page 6
Abstract	page 8
Introduction	page 10
Materials and Methods	
✓ Subjects and study design	page 12
✓ Data	page 12
✓ Biopsy procedure	page 13
✓ Histopathological and molecular biology analysis	page 14
✓ Complications	page 14
✓ Statistical analysis.....	page 15
Results	
✓ Patients.....	page 16
✓ Performance of histopathology and molecular analyses...	page 16
✓ Complications.....	page 17
✓ Therapeutic Impact.....	page 17
Discussion.....	page 18
Conclusion.....	page 21
Annexes.....	page 22
Bibliographie.....	page 27
Serment d’Hippocrate.....	page 30

Biopsie percutanée scano-guidée de lésion osseuse lytique chez des patients soupçonnés de cancer du poumon: performances diagnostiques pour analyse histologique et moléculaire

RÉSUMÉ :

Introduction: Les os sont un lieu fréquent de métastase du cancer pulmonaire. Les cliniciens sont souvent réticents à la biopsie des métastases osseuses, car elle nécessite un processus de décalcification qui endommage les acides nucléiques, la rendant incompatible aux tests moléculaires. Nous avons réalisé cette étude pour évaluer les performances diagnostiques histologiques et moléculaires des biopsies osseuses percutanées guidées par tomodensitométrie (TDM) des lésions osseuses lytiques lors de l'évaluation initiale ou de la progression du cancer du poumon.

Méthodes: Cette étude rétrospective a porté sur les patients chez lesquels un cancer primitif du poumon et des biopsies guidées par scanner d'os lytique ont été réalisées entre janvier 2010 et juin 2017. Le critère de jugement principal était la performance diagnostique histologique. Les critères d'évaluation secondaires étaient la performance diagnostique moléculaire et l'incidence des complications.

Résultats: Cinquante patients ont été inclus. Le rendement pour l'analyse histologique était de 100%, permettant dans tous les cas d'établir un diagnostic de certitude. Le pourcentage de cellules tumorales (mentionné dans 31/50 cas) était supérieur au seuil de 20% dans 83,9% des cas. Le rendement de l'analyse moléculaire était de 94,6% (35 échantillons sur 37). Une mutation a été trouvée dans 60% des cas; le plus souvent KRAS (28,6%) et EGFR (14,3%). Le taux de complications était de 2% : un pneumothorax mineur non drainé.

Conclusion: les biopsies d'os lytique percutanées scanoguidées sont associées à un taux de complications très faible et des performances diagnostiques histologiques et moléculaires élevées.

MOTS CLÉS :

métastases osseuses, biopsie percutanée, biopsie sous scanner, histopathologie, biologie moléculaire, génotype tumoral

Percutaneous CT-guided biopsy of lytic bone lesions in patients clinically suspected of lung cancer: diagnostic performances for pathological diagnosis and molecular testing

Running title: Percutaneous CT-guided biopsy of lytic bone lesions

Stéphane ASFARI 1, Anne-Claire TOFFART 2, Anne Mc LEER 3, Emilie REYMOND 1, Adrien JANKOWSKI 1, Denis MORO-SIBILOT 2, Olivier STEPHANOV 4, Julien GHELFI 1, Sylvie LANTUEJOUL 5, Gilbert R. FERRETTI 6

1 Service de radiologie diagnostique et interventionnelle Nord, CS 10217, 38043 Grenoble

2 Unité d'oncologie thoracique, Service de pneumologie, CS 10217, 38043 Grenoble

3 pathologie moléculaire, Institut de Biologie et de Pathologie - Rdc Bas, CS 10217, 38043 Grenoble

4 anatomopathologie, Institut de Biologie et de Pathologie - Rdc Bas, CS 10217, 38043 Grenoble

5 Plateforme Anapath Recherche Synergie Lyon Cancer-Est, Département de Recherche Translationnelle et d'Innovations Centre de Lutte Contre le Cancer UNICANCER Léon Bérard, 28 rue Laënnec, 69008 Lyon

6 INSERM U 1209 IAB, la Tronche, 38700 France

Corresponding author: G R Ferretti, Service de radiologie diagnostique et interventionnelle Nord, CS 10217, 38043 Grenoble, gferretti@chu-grenoble.fr

Abstract

Introduction:

Bone is a common location for lung cancer metastasis. Clinicians are often reluctant to biopsy bone metastases, as they are known to require a decalcification process that damages nucleic acids, which makes it incompatible with molecular testing. We performed this study to assess the diagnostic performance of histopathology and molecular testing of computed tomography (CT)-guided percutaneous bone biopsies of lytic bone lesions during the initial assessment or during the progression of lung cancer.

Methods:

This retrospective study included all patients suspected of having or known to have primary lung cancer and CT-guided percutaneous bone biopsies of lytic bone from January 2010 to June 2017. The main judgment criterion was the diagnostic performance of the pathological analysis. Secondary endpoints were the diagnostic performance of molecular testing and incidence of complications.

Results:

Fifty patients were included. The yield of CT-guided percutaneous bone biopsies for pathological analysis was 100%, allowing for a diagnosis of certainty in all cases. The percentage of tumor cells in samples (mentioned in 31/50 cases) was higher than the 20% threshold in 83.9% of cases. The yield of molecular analysis was 94.6% (35 of 37 samples). A mutation was found in 60% of cases; most frequently in *KRAS* (Kirsten rat sarcoma viral oncogene homolog) (28.6%) and *EGFR* (epidermal growth factor receptor) (14.3%). The complication rate was 2%, i.e. a minor undrained pneumothorax.

Conclusion: CT-guided percutaneous bone biopsies of lytic bone is associated with a very low complication rate and high diagnostic performance for histopathology and mutation testing.

Key words: lung cancer; bone metastasis; core biopsy; computed tomography; CT-guided biopsy; histopathology; molecular biology; tumor genotype.

Introduction

The management of advanced stage non-small cell lung cancer (NSCLC) has significantly improved in the last decades with the introduction of personalized treatments showing better efficacy than chemotherapy [1,2]. However, such treatments require precise histopathological subtyping of the tumor, molecular testing and PD-L1 (Programmed death-ligand 1) immunohistochemistry (IHC) to predict immune checkpoint inhibitor response. In cases of tumor progression, a rebiopsy is often performed with specific molecular testing to detect mechanisms of EGFR (epidermal growth factor receptor) or ALK (anaplastic lymphoma kinase) inhibitor resistance. Finally, this multistep approach for the biological diagnosis of lung cancer requires sufficient quantity and optimal quality of material [3]. Alternatively, while the number of biological tests has increased, sample size has decreased with the growing development of small biopsies under local anesthesia, such as those provided by computed tomography (CT)-guided biopsies.

The contribution to the histopathological diagnosis and molecular testing of CT-guided biopsies of NSCLC bone metastases (initial diagnosis or rebiopsy at progression) is, however, poorly understood. Indeed, whereas bone is a frequent or exclusive site of lung cancer metastasis, biopsies frequently require decalcification, with acidic reagents leading to degradation of nucleic acids and DNA, incompatible with molecular testing [4].

Nonetheless, it has been shown that biopsies of lytic bone lesions perform better, regarding diagnosis and theranostics, than biopsies of sclerotic bone lesions [5,6]. To our knowledge, no studies have specifically examined the performances and complications of CT-guided percutaneous bone biopsies in patients with suspected or known advanced lung cancer.

Complications of bone biopsies are on the order of 0.2 to 1.6% for percutaneous biopsies, compared to 6 to 16% for open surgical biopsies [7], including hematomas, pneumothorax and neurological complications. In a meta-analysis involving 9,500 patients,

Murphy [8] recorded severe neurological complications (paralysis, meningitis) in 0.08% of cases and death in 0.02%. The theoretical risk of dissemination on the path of biopsy is low.

The purpose of our study was to determine the diagnostic performance and complication rate of imaging-guided percutaneous needle core biopsy in patients with lytic bone metastases and known or suspected lung cancer.

Materials and Methods

Subjects and study design

This monocentric retrospective study was conducted at the University Hospital of Grenoble Alpes, France. All patients known or suspected of having lung cancer who received CT-guided percutaneous bone biopsies of a lytic bone between January 2010 and June 2017 were included. Lytic bone lesions were detected by regular contrast enhanced CT of the thorax, abdomen and pelvis and defined as a bone defect filled with tissue density material, with or without cortical rupture. Patients with lytic bone metastases of known extra-pulmonary origin were excluded as well as those with entirely sclerotic bone lesions. The main endpoint of this study was the diagnostic performance of the pathological analysis. Secondary endpoints were the diagnostic performance of molecular testing and incidence of complications.

According to the French regulations for retrospective non-interventional clinical research, written information was delivered to the last known postal address to all selected patients, with the possibility of sending back, within the specified time limits (1 month), their opposition to the anonymous collection of their data. This study was registered at www.ClinicalTrials.gov with the identifier NCT03386916.

Data

Data for each CT-guided percutaneous bone biopsies were collected from our hospital's computerized patient record and the radiology information system (RIS-PACS). The patients' electronic medical records were reviewed to obtain clinical history.

Collected data included characteristics of the patient, biopsied lesion (location, size), occurrence of a complication during and after the biopsy, histopathological and molecular biology results and the resulting therapeutic impact.

Biopsy procedure

Prior to each CT-guided percutaneous bone biopsy, the risks and benefits of percutaneous biopsies were discussed and written informed consent was obtained from each patient.

All CT-guided percutaneous bone biopsies were performed by a board-certified radiologist (with 3 to 27 years of experience) or by a radiology resident under direct senior radiologist supervision.

Coagulation screening was performed before all procedures (exclusion criteria were an international normalized ratio > 1.5 or a platelet count $< 50,000/L$). For all patients, the biopsy was performed percutaneously under CT scan guidance.

All patients underwent a CT of the chest-abdomen-pelvis prior to biopsy to confirm the site of biopsy and calculate the optimal trajectory of the needle. At the time of biopsy, selected images were obtained in the area of interest with 1 mm-thick contiguous CT sections. The procedure was performed with the patient in a prone, supine, or lateral position, depending on the location of the lesion (Figure 1). The position allowed the easiest access route to avoid neurovascular structures and viscera. All CT-guided percutaneous bone biopsies were performed using a local anesthetic (20 mL of 1% lidocaine). We used a coaxial biopsy system consisting of a 15- or 17-gauge (G) outer needle (Angiotech coaxial introducer needle; Medical Device Technologies Inc., Gainesville, FL, USA) and a 16- or 18-G core biopsy needle (Angiotech BioPince™ full core biopsy instrument), respectively, which allows for 13-mm or 23-mm or 33-mm long core tissue biopsies. The coaxial technique allows for acquisition of multiple samples using only one transgression through the skin. The number of samples depended on the will of the radiologist in charge of the patient according to the visual quality and quantity of the material obtained. After the biopsy, the patients were transferred to the chest unit for a 3-hour clinical follow-up. A chest radiograph was performed

3 hours after the procedure in cases of thoracic biopsy. Biopsies were immediately fixed in formalin and embedded in paraffin within 24 hours.

Histopathological and molecular biology analysis

As mentioned in our prescription form, pathologists received the information of a lytic bone lesion to preclude decalcification.

Hematoxylin–eosin–safran (HES) sections of formalin-fixed and paraffin-embedded TTNB were analyzed histologically. The lengths of biopsies and the average percentage of tumor cells present on the slides were recorded.

For nonsquamous NSCLC, samples were tested by pyrosequencing or NGS (next generation sequencing) for *EGFR*, *KRAS*, *BRAF* (BRAF proto oncogene), and *HER2* (human epidermal growth factor receptor 2), and screened for *ALK* and *ROS1* (ROS1 proto oncogene) rearrangement by IHC and by FISH (Fluorescence in situ hybridization) for *MET* amplification in cases of EGFR TKI (Tyrosine kinase inhibitor) resistance. Detection of *MET* (hepatocyte growth factor receptor) exon 14 mutation was performed when requested by the oncologist. PD-L1 IHC (using the 22C3 assay) was performed starting in May 2015 and only for requested patients.

Complications

Immediate complications were collected on the radiologist's report. The clinical files were reviewed for complications.

Complications were classified as minor or major according to the Society of Interventional Radiology (SIR) Guidelines [9]. Minor complications consisted of pneumothorax without need for intervention, ground glass opacity around the target diagnosed as pulmonary hemorrhage, and transient hemoptysis. Major complications

consisted of pneumothorax requiring intervention, hemothorax, air embolism, needle tract seeding, and death. Intervention was defined as treatment consequences (manual aspiration, chest tube placement, or pain control) or hospital admission.

Statistical analysis

The diagnostic performance of CT-guided percutaneous bone biopsies of lytic bone for histopathology was calculated by the number of samples that could be analyzed / total number of bone biopsies performed x100. The diagnostic performance of molecular analysis was calculated as the number of analyzable samples / total number of samples sent for molecular testing x 100.

Tumor size is the sum of the larger tumor axis and the larger perpendicular axis divided by two [10]. The percentage of tumor cells collected was classified according to the following threshold values: less than 20%, between 20 and 50% and greater than 50%, acknowledging that a minimum rate of 10 to 20% is commonly necessary for genetic testing.

Quantitative variables were expressed as median [interquartile (IQR) 25%-75%] and qualitative variables as n (%).

All statistical analyses were performed using SAS 9.4 (SAS Institute, Cary, NC, USA).

Results

Patients

A total of 773 biopsies were collected in the thoracic imaging unit of our hospital during the study period (Figure 2). Of these, 58 (8%) involved suspected bone metastases in patients with known or suspected primary lung cancer. Eight patients were excluded because the suspected bone lesions were not lytic. Finally, data from 50 patients with biopsies of lytic bone were included.

The main characteristics of biopsies are reported in Table 1. The characteristics of the biopsied lesions in terms of morphology and location are reported in Table 2. The average size of the biopsied lesions was 33 mm (IQR 25%-75%, 24-43 mm), located 27 mm deep (IQR 25%-75%, 20-36 mm). Bone lesions affecting the thoracic region (41 biopsies / 50, 82%) were at a median distance of 0 mm from the pleura (IQR 25%-75%, 0-6). Costal location predominated (28 cases (56%)), followed by sternum and iliac bone locations. A median of 3 biopsy samples were taken (1 to 5 samples, IQR 25%-75%, 2-3) with a median sampling length of 13 mm [IQR 25%-75%, 13-23]. A majority of biopsies were performed with a 16G needle (n=33, 66%).

Performance of histopathology and molecular analyses

The biopsy was informative in 100% of cases. Lung adenocarcinoma accounted for the majority of the cases (31 patients (62%)). Table 3 summarizes the main results.

For 31 (62%) patients, the percentage of tumor cells was mentioned in the pathological report. Among them, 26/31 (84%) patients had a tissue sample with more than 20% tumor cells and higher than 50% in 58.1%, allowing for reliable molecular analysis.

Molecular testing was requested for 37 of the 50 patients (74%), consistent with the current recommendations according to histological subtype of the tumor (Table 3). In 35/37 cases, the molecular analyses could be performed. Two samples were not analyzable due to

insufficient tissue material. In 21 patients, mutations were identified, mainly *KRAS* mutations (n=10; 29%) and *EGFR* mutations (n=6; 17%). In one patient, an adenocarcinoma was diagnosed on a biopsy performed during fibroscopy, but due to insufficient material for molecular testing, a biopsy of the metastatic bone was subsequently performed and showed an *EGFR* mutation.

Complications

Only one (2%) complication was detected. The complication was a pneumothorax of low abundance (13 mm thick) complicating a biopsy of a rib and requiring no drainage or specific management and therefore was minor according to the SIR classification.

Therapeutic Impact

Following the bone biopsy analyses, 8 patients received a specific targeted therapy, 28 received chemotherapy and 3 received immunotherapy. No follow-up information was found for 1 patient.

In 8 patients, an *EGFR* mutation or *ALK* translocation was identified. Six received a new targeted therapy. For the other 2 patients, no new targeted therapy could be proposed, and the patients received chemotherapy.

Discussion

Our retrospective study showed a 100% yield for histopathological diagnosis. Forty-five biopsies (90%) showed metastases from a primary lung cancer, of which adenocarcinoma was the most common subtype (62%). The diagnostic yield for molecular biology was 94.6% (35/37). A mutation was found in 60% of cases, and the most frequent were in *KRAS* (28.6%) and *EGFR* exons 19-21 (14.3%), in accordance with the literature [11]. The percentage of tumor cells in samples (mentioned in 31/50 cases) was higher than the usually recommended 20% threshold [12] in 83.9% of cases. The complication rate was very low (2%), in the form of a minor complication with spontaneous resolution of the pneumothorax type.

One of the criteria for inclusion in our study was the osteolytic nature of bone lesions on CT images, i.e., the calcified bone structure was replaced by soft attenuation tissue, with or without rupture of the cortical bone. This presentation at CT allowed for the following:

1/ Using a simple coaxial technique protocol of biopsy without specific tools that are required to biopsy suspected osteoblastic metastasis on the bone.

2/ Using a selected needle-length of the sample (13, 23, 33 mm) adapted to the size of the target lesion. As bone biopsies are at lower risk for complications than intrathoracic biopsies [8-10], we used larger diameter needles (16G) to optimize the quantity and quality of tissue samples. In our study, 66% of the samples (33 biopsies) were obtained with 16G needles and 34% (17 biopsies) with 18G needles.

3/ Specifying to the pathologist that the sample should not be decalcified before analysis. The absence of decalcification and subsequent absence of degradation of nucleic acids and antigens explains the excellent yield of histopathological and molecular analyses [3].

Indeed, the histopathological yield of bone biopsies in the literature varies according to the series, depending on the osteoblastic or osteolytic nature of the targeted lesion. The yield of histopathology in cases of lytic lesions biopsies was 71% in the study by Jelinek et al. [13]

(bone tumors) and 85% in the study by Fraser-Hill et al. [14]. For osteoblastic lesions, the yield varies between 69 and 82% [14, 15]. The study by Vieillard et al. [6] evaluated the yield of percutaneous bone biopsies for vertebral and peripheral bone tumors. The efficacy was higher for lytic lesions (87%; 64/73) than for osteoblastic lesions (66%; 2/3) but with no significant difference between these subgroups due to small figures. The lower diagnostic yield of osteoblastic lesions is due to the difficulty in identifying the tiny spinal cord areas within bone fragments containing a few groups of neoplastic cells [6].

When the amount of calcified bone tissue is small, it is not necessary to perform a decalcification step, which deteriorates membrane antigens and nucleic acids [16]. The study by VanderLaan et al. [5] evaluated the success rate of *EGFR/KRAS* mutations and *ALK* rearrangements by comparing surgical specimens of all types (pulmonary / lymph node / bone / pleural and cerebral) vs. percutaneous biopsy vs. bronchoalveolar lavage in non-small cell lung cancers. Failure rates for *EGFR* molecular testing were higher in percutaneous biopsy if the biopsy sample was bone: 40% (4/10) compared to 0% (0/13) ($p=0.024$) in surgical resection. Bone samples were of all types, lytic and condensing, with decalcification of tumor tissue before sample preparation correlating with a higher failure rate for genotypic research: 60% (3/5) vs. 5.5% (1/18) ($p=0.021$) for *EGFR* with similar rates for *ALK* (44% vs. 0%) and *KRAS* (22% vs. 0%).

Due to the infrequent availability of PET-CTs in our PACS system at the time of bone biopsy, it was not possible to assess the correlation between the lytic nature of a bone lesion at CT chosen as a target and the hypermetabolic activity at PET-CT. This correlation was performed by Wei Guo et al. [17] in 51 patients with a strong suspicion of metastatic lung cancer and bone lesions. Biopsies confirmed the metastatic nature of bone lesions in 96.1% of cases (49/51 patients) after the first biopsy while a second sampling was needed in two patients. Forty-seven out of 51 lesions showed lung cancer metastases. *EGFR* molecular testing was

performed in 23 cases, 7 of which were positive (31.4%). *ALK* rearrangements tested positive in 31.6% of cases (6/19 patients). The results of the study by Wei Guo et al. [17] are comparable to those of the present study regarding the pathological efficiency of biopsies. We therefore question the interest of PET-CT to target the bone lesion in a lung cancer context, regarding its cost and low availability [18].

In the context of recent diagnosis or progression of lung cancer with secondary bone metastases, the question of the choice of the lesion to biopsy, either the primary lung tumor or a secondary lytic bone lesion, arises. For many clinicians, a biopsy of a bone lesion is not desirable because of the decalcification process that degrades the quality of the samples [16]. The study by Ferretti et al. performed in 2013 [19] included CT-guided lung biopsies. Confirmation of lung cancer was obtained in 80 to 95% of cases, with successful molecular biology tests in nearly 95% of cases for *EGFR* and *KRAS* and 100% for *ALK*. The cancer cell count on the samples was approximately 42%. The results of the present study are similar and demonstrate the importance of osteolytic bone sampling in the specific context of bronchopulmonary cancers.

The benefit/risk ratio is an important issue for the choice of any invasive procedure. All of the published studies in the literature on percutaneous bone biopsies show extremely low complication rates [6, 13, 18, 19-22], including Lorenzo Monfardini's retrospective study [23], which included 308 percutaneous bone metastases and reported complications in 3.5% (11/308), all considered minor. This result is consistent with our study, which found only one minor complication (2%), a limited pneumothorax. In contrast, CT-guided lung biopsies have a substantially higher complication rate as recently confirmed in the multicenter retrospective analysis by Fontaine-Delaruelle et al. [24], who showed complications in 34% of cases (pneumothorax and hemoptysis), including 6% that were severe complications (drained pneumothorax, hemoptysis or hemothorax).

Conclusion

CT-guided biopsy of lytic bone lesions occurring in a context of diagnosis or progression of lung cancer is a simple, safe and cost-effective procedure for pathological diagnosis and molecular biology analysis. The excellent yield of lytic bone biopsies associated with a low complication rate should encourage biopsies of lytic bone lesions if present and accessible instead of lung targets. In addition, these biopsies can be performed with the same material as soft tissue biopsies.

ANNEXES

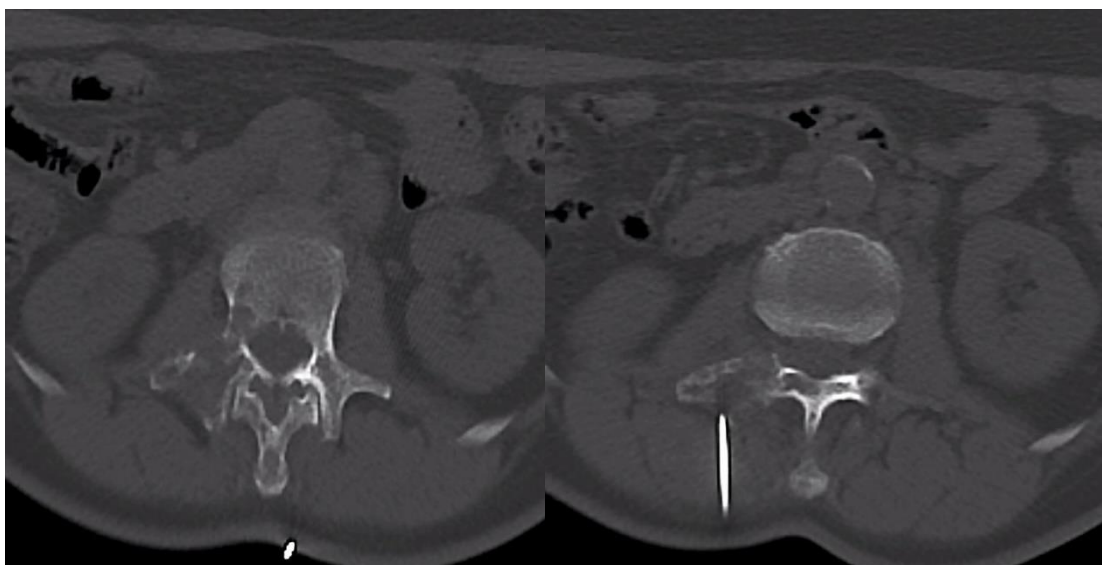


Figure 1: CT guided biopsy of focal osteolysis of right transverse process extended to pedicle.

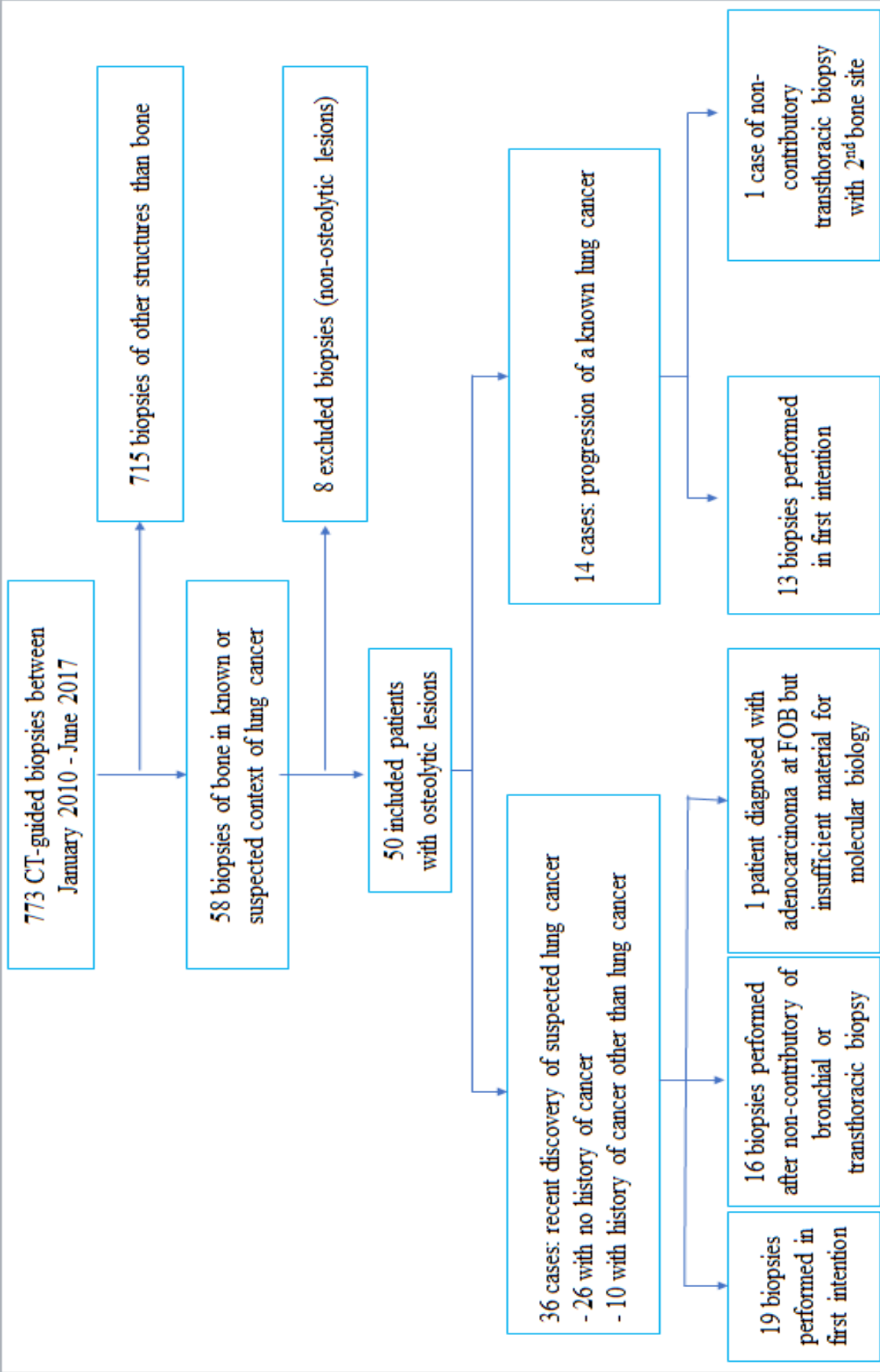


Figure 2. Flowchart

Table 1. Patients' characteristics

*Qualitative variables were expressed as n (%) and quantitative variables as median (interquartile 25%-75%)

CT, computed tomography-guided percutaneous bone biopsies; NSCLC, *non-small-cell lung cancer*

Patients' characteristics	N=50
Age (years)	65 [62-73]
History of cancer	24 (48%)
Nonsmokers patients	9 (18%)
Former/current smokers	38 (76%)
Unknown	3 (6%)
Number of pack-year	28 [40-50]
Prior cancer	
Lung cancer	14 (58%)
Adenocarcinoma	8 (33%)
NSCLC	3 (13%)
Squamous cell carcinoma	2 (8%)
Carcinoid tumor	1 (4%)
Other cancer	9 (42%)
Initial molecular biology in patients with adenocarcinoma of the lung (mutations)	N = 10
No	8 (80%)
EGFR 19 21	1 (10%)
ALK	1 (10%)
Indication of CT – guided percutaneous bone biopsies	N = 50
Initial evaluation of suspected lung cancer	35 (70%)
Progression of lung cancer	14 (28%)
Molecular biology testing	1 (2%)
Initial extra osseous biopsy failure's causes	N = 18
Tissue without cancer	10 (56%)
Uncertainty	3 (17%)
Doubt adenocarcinoma	2 (11 %)
No molecular biology	2 (11%)
Doubt Squamous cell carcinoma	1 (5%)

Table 2. biopsies characteristics.

Qualitative variables were expressed as n (%) and quantitative variables as median (IQR 25%-75%)

Biospies' characteristics	N=50
Size of lesions (mm)	40 [29-55]
Maximum diameter	22 [17-31]
Minimum diameter	33 [23-42]
Mean diameter	
Distance from skin (mm)	27 [20-36]
Distance from pleura if thoracic biopsy (mm)	0 [0-6]
Number of samples	3 [2-3]
Needle size	
16 G	33 (66%)
18 G	17 (34%)
Location	
Ribs	28 (56%)
Pelvis	8 (16%)
Sternum	6 (12%)
Arm	5 (10%)
Vertebra	3 (6%)

Table 3. Histological and molecular biology results.

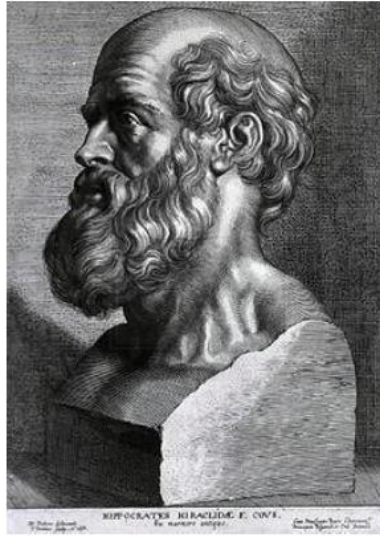
Results	Number (percentage%)
Histological type	31 (62%)
Pulmonary adenocarcinoma	6 (12%)
Non small cells carcinoma	5 (10%)
Squamous cells carcinoma	2 (4%)
Small cells carcinoma	1 (2%)
Lung atypical carcinoid	3 (6%)
	2 (4%)
Other cancer's metastasis	
Non-tumoral	
Molecular biology performed	13 (26%)
No	2 (4%)
Insufficient material	35 (70%)
Yes	14 (40%)
No genomic alteration	11 (31%)
KRAS/NRAS mutation	5 (14%)
EGFR exon 19/21 mutation	1 (3%)
EGFR T790M mutation	2 (6%)
ALK rearrangement	2 (6%)
CMET amplification? Exon 14 mutation?	

REFERENCES BIBLIOGRAPHIQUES

1. Peters S, Camidge DR, Shaw AT, Gadgeel S, Ahn JS, Kim D-W, et al. Alectinib versus Crizotinib in Untreated ALK-Positive Non-Small-Cell Lung Cancer. *N Engl J Med.* 31 2017;377(9):829-38.
2. Soria J-C, Ohe Y, Vansteenkiste J, Reungwetwattana T, Chewaskulyong B, Lee KH, et al. Osimertinib in Untreated EGFR-Mutated Advanced Non-Small-Cell Lung Cancer. *N Engl J Med.* 11 2018;378(2):113-25.
3. Bubendorf L, Lantuejoul S, de Langen AJ, Thunnissen E. Nonsmall cell lung carcinoma: diagnostic difficulties in small biopsies and cytological specimens: Number 2 in the Series « Pathology for the clinician » Edited by Peter Dorfmueller and Alberto Cavazza. *Eur Respir Rev Off J Eur Respir Soc.* 30 juin 2017;26(144).
4. Singh VM, Salunga RC, Huang VJ, Tran Y, Erlander M, Plumlee P, et al. Analysis of the effect of various decalcification agents on the quantity and quality of nucleic acid (DNA and RNA) recovered from bone biopsies. *Ann Diagn Pathol.* août 2013;17(4):322-6.
5. Vanderlaan PA, Yamaguchi N, Folch E, Boucher DH, Kent MS, Gangadharan SP, et al. Success and failure rates of tumor genotyping techniques in routine pathological samples with non-small-cell lung cancer. *Lung Cancer Amst Neth.* avr 2014;84(1):39-44.
6. Vieillard M-H, Boutry N, Chastanet P, Duquesnoy B, Cotten A, Cortet B. Contribution of percutaneous biopsy to the definite diagnosis in patients with suspected bone tumor. *Jt Bone Spine Rev Rhum.* janv 2005;72(1):53-60.
7. Mankin HJ, Mankin CJ, Simon MA. The hazards of the biopsy, revisited. Members of the Musculoskeletal Tumor Society. *J Bone Joint Surg Am.* mai 1996;78(5):656-63.
8. Murphy WA, Destouet JM, Gilula LA. Percutaneous skeletal biopsy 1981: a procedure for radiologists--results, review, and recommendations. *Radiology.* juin 1981;139(3):545-9.

9. Sacks D, McClenny TE, Cardella JF, Lewis CA. Society of Interventional Radiology clinical practice guidelines. *J Vasc Interv Radiol JVIR*. sept 2003;14(9 Pt 2):S199-202.
10. Bankier AA, MacMahon H, Goo JM, Rubin GD, Schaefer-Prokop CM, Naidich DP. Recommendations for Measuring Pulmonary Nodules at CT: A Statement from the Fleischner Society. *Radiology*. 2017;285(2):584-600.
11. Barlesi F, Mazieres J, Merlio J-P, Debieuvre D, Mosser J, Lena H, et al. Routine molecular profiling of patients with advanced non-small-cell lung cancer: results of a 1-year nationwide programme of the French Cooperative Thoracic Intergroup (IFCT). *Lancet Lond Engl*. 2 avr 2016;387(10026):1415-26.
12. Smits AJJ, Kummer JA, de Bruin PC, Bol M, van den Tweel JG, Seldenrijk KA, et al. The estimation of tumor cell percentage for molecular testing by pathologists is not accurate. *Mod Pathol Off J U S Can Acad Pathol Inc*. févr 2014;27(2):168-74.
13. Jelinek JS, Murphey MD, Welker JA, Henshaw RM, Kransdorf MJ, Shmookler BM, et al. Diagnosis of primary bone tumors with image-guided percutaneous biopsy: experience with 110 tumors. *Radiology*. juin 2002;223(3):731-7.
14. Fraser-Hill MA, Renfrew DL. Percutaneous needle biopsy of musculoskeletal lesions. 1. Effective accuracy and diagnostic utility. *AJR Am J Roentgenol*. avr 1992;158(4):809-12.
15. Leffler SG, Chew FS. CT-guided percutaneous biopsy of sclerotic bone lesions: diagnostic yield and accuracy. *AJR Am J Roentgenol*. mai 1999;172(5):1389-92.
16. Schrijver WAME, van der Groep P, Hoefnagel LD, Ter Hoeve ND, Peeters T, Moelans CB, et al. Influence of decalcification procedures on immunohistochemistry and molecular pathology in breast cancer. *Mod Pathol Off J U S Can Acad Pathol Inc*. 2016;29(12):1460-70.
17. Guo W, Hao B, Chen H-J, Zhao L, Luo Z-M, Wu H, et al. PET/CT-guided percutaneous biopsy of FDG-avid metastatic bone lesions in patients with advanced lung cancer: a safe and effective technique. *Eur J Nucl Med Mol Imaging*. janv 2017;44(1):25-32.

18. Fournier L-S, Cuénod C-A, Clément O, Frija G. [Treatment response evaluation by functional imaging]. *Cancer Radiother J Soc Francaise Radiother Oncol.* nov 2006;10(6-7):484-7.
19. Ferretti GR, Busser B, de Fraipont F, Reymond E, McLeer-Florin A, Mescam-Mancini L, et al. Adequacy of CT-guided biopsies with histomolecular subtyping of pulmonary adenocarcinomas: influence of ATS/ERS/IASLC guidelines. *Lung Cancer Amst Neth.* oct 2013;82(1):69-75.
20. Logan PM, Connell DG, O'Connell JX, Munk PL, Janzen DL. Image-guided percutaneous biopsy of musculoskeletal tumors: an algorithm for selection of specific biopsy techniques. *AJR Am J Roentgenol.* janv 1996;166(1):137-41.
21. Cox M, Pukenas B, Poplawski M, Bress A, Deely D, Flanders A. CT-guided Cervical Bone Biopsy in 43 Patients: Diagnostic Yield and Safety at Two Large Tertiary Care Hospitals. *Acad Radiol.* nov 2016;23(11):1372-5.
22. Preteseille O, Barral FG, Court L, Russias B, Manet L, Tanji P, et al. [Value of percutaneous core needle biopsy in the investigation of a suspected bone tumor]. *J Radiol.* juin 2003;84(6):693-7.
23. Monfardini L, Preda L, Aurilio G, Rizzo S, Bagnardi V, Renne G, et al. CT-guided bone biopsy in cancer patients with suspected bone metastases: retrospective review of 308 procedures. *Radiol Med (Torino).* nov 2014;119(11):852-60.
24. Fontaine-Delaruelle C, Souquet P-J, Gamondes D, Pradat E, de Leusse A, Ferretti GR, et al. [Predictive factors of complications during CT-guided transthoracic biopsy]. *Rev Pneumol Clin.* avr 2017;73(2):61-7.



SERMENT D'HIPPOCRATE

En présence des Maîtres de cette Faculté, de mes chers condisciples et devant l'effigie d'HIPPOCRATE,

Je promets et je jure d'être fidèle aux lois de l'honneur et de la probité dans l'exercice de la Médecine.

Je donnerai mes soins gratuitement à l'indigent et n'exigerai jamais un salaire au dessus de mon travail. Je ne participerai à aucun partage clandestin d'honoraires.

Admis dans l'intimité des maisons, mes yeux n'y verront pas ce qui s'y passe ; ma langue taira les secrets qui me seront confiés et mon état ne servira pas à corrompre les mœurs, ni à favoriser le crime.

Je ne permettrai pas que des considérations de religion, de nation, de race, de parti ou de classe sociale viennent s'interposer entre mon devoir et mon patient.

Je garderai le respect absolu de la vie humaine.

Même sous la menace, je n'admettrai pas de faire usage de mes connaissances médicales contre les lois de l'humanité.

Respectueux et reconnaissant envers mes Maîtres, je rendrai à leurs enfants l'instruction que j'ai reçue de leurs pères.

Que les hommes m'accordent leur estime si je suis fidèle à mes promesses.

Que je sois couvert d'opprobre et méprisé de mes confrères si j'y manque.

THÈSE SOUTENUE PAR : Stéphane ASFARI

TITRE :

**PERCUTANEOUS CT-GUIDED BIOPSY OF LYTIC BONE LESIONS IN PATIENTS
CLINICALLY SUSPECTED OF LUNG CANCER: DIAGNOSTIC PERFORMANCES FOR
PATHOLOGICAL DIAGNOSIS AND MOLECULAR TESTING**

CONCLUSION :

CT-guided biopsy of lytic bone lesions occurring in a context of diagnosis or progression of lung cancer is a simple, safe and cost-effective procedure for pathological diagnosis and molecular biology analysis. The excellent yield of lytic bone biopsies associated with a low complication rate should encourage biopsies of lytic bone lesions if present and accessible instead of lung targets. In addition, these biopsies can be performed with the same material as soft tissue biopsies.

VU ET PERMIS D'IMPRIMER

Grenoble, le : 29/10/11

LE DOYEN



Pr. Patrice MORAND

Pour le Président
et par délégation
—
Le Doyen de Médecine
Pr. Patrice MORAND

LE PRÉSIDENT DE LA THÈSE

Pr. Gilbert R. FERRETTI

