



HAL
open science

Diagnostic échographique des pneumopathies acquises sous ventilation mécanique en réanimation pédiatrique

Justine Uguen

► **To cite this version:**

Justine Uguen. Diagnostic échographique des pneumopathies acquises sous ventilation mécanique en réanimation pédiatrique. Sciences du Vivant [q-bio]. 2021. dumas-03195810

HAL Id: dumas-03195810

<https://dumas.ccsd.cnrs.fr/dumas-03195810v1>

Submitted on 12 Apr 2021

HAL is a multi-disciplinary open access archive for the deposit and dissemination of scientific research documents, whether they are published or not. The documents may come from teaching and research institutions in France or abroad, or from public or private research centers.

L'archive ouverte pluridisciplinaire **HAL**, est destinée au dépôt et à la diffusion de documents scientifiques de niveau recherche, publiés ou non, émanant des établissements d'enseignement et de recherche français ou étrangers, des laboratoires publics ou privés.

**UNIVERSITE DE LA REUNION
UFR SANTE**

2021

N° 2021LARE009M

**THESE POUR LE DIPLOME D'ETAT
DE DOCTEUR EN MEDECINE**

**Diagnostic échographique des pneumopathies acquises sous
ventilation mécanique en réanimation pédiatrique**

Présentée et soutenue publiquement le 12/03/2021 à 16h
À La Réunion
Par Justine Uguen

JURY

Président :

Madame la Professeure Silvia IACOBELLI

Assesseurs :

Madame la Professeure Elise LAUNAY

Monsieur le Docteur Etienne DARRIEUX

Directeur de Thèse :

Madame la Docteure Lise PEIPOCH

Table des matières

Abréviations	4
Introduction	5
Article	11
<i>Abstract</i>	11
<i>Introduction</i>	13
<i>Materials and methods</i>	14
Study design and setting	14
Participants.....	14
Data collection	15
Statistical analyses.....	17
Ethics statement	17
<i>Results</i>	17
<i>Discussion</i>	20
Lung ultrasound signs of VAP	20
Lung ultrasound scores.....	21
Inter-observer agreement	22
Incidence	23
Local ecology	23
Limitations	23
<i>Conclusion</i>	24
<i>Acknowledgments</i>	24
<i>Conflict of interest statement</i>	24
Discussion	25
Lung ultrasound signs of VAP	25
Lung ultrasound scores.....	26
Inter-observer agreement	27
Incidence	27
Local ecology	28
Risk factors of VAP.....	28
Limitations	30
Conclusion	31
Serment d’Hippocrate	32
Bibliographie	33
Abstract	37

Table des matières des tableaux et figures

Figure 1 Diagnostic score of ventilator-associated-pneumonia by the Centers of disease control and prevention (CDC) 2018	7
Figure 2 Normal lung in ultra-sound view.....	8
Figure 3 B-Lines.....	8
Figure 4 Sub-pleural consolidations.....	9
Figure 5 Consolidations without air bronchogram.....	9
Figure 6 Pleural effusion.....	10
Figure 7 Flow-chart.....	15
Figure 8 LUS examination areas.....	16
Table 1 Patients' main clinical characteristics	18
Table 2 LUS performances in the diagnostic of VAP	19
Table 3 LUS performances in the diagnostic of VAP with microbiologic findings	19

Abréviations

VAP : ventilator-associated-pneumonia
MV : mechanical ventilation
PICU : pediatric intensive care unit
CXR: chest X-Ray
CDC : center of disease control
LUS : lung-ultra-sound
BL : B-Lines
SPC : sub-pleural consolidation
CS : consolidation
DAB : dynamic air bronchogram
PE: pleural effusion
CAP : community-acquired-pneumonia
PRISM : PICU admission Pediatric Risk of Mortality scores
PELOD : PEdiatric Logistic Organ Dysfonction score
ARDS : acute-respiratory-distress-syndrome
BAL: bronchoalveolar lavage
PSB : protected specimen brush
ETA : endotracheal aspirate
CFU : colony forming units
Ml : milliliter
NPV : negative predictive value
PPV : positive predictive value
CRP : C-reactive protein
Ped-VAE : Pediatric ventilator-associated-event
PEEP : positive end-expiratory pressure
FiO2 : fraction of inspired oxygen
NICU : neonatal-intensive-care-unit
CEPPIS : chest echography and pulmonary infection Score
CPIS : clinical pulmonary infection score
LUPPIS : lung ultrasound and pentraxin-3 pulmonary infection score
SRLF : société de réanimation en langue française
ICU : intensive-care-unit

Introduction

Ventilator-associated-pneumonia (VAP) refers to diagnosis of nosocomial pneumonia occurring 48 hours or more after initiation of mechanical ventilation (MV).

The physiopathology of VAP can be explained by different factors: presence of bacteria in the oropharynx, especially in the area of dental plaque, stagnation of secretions above the balloon and in the subglottic space, and micro-inhalations (1). This colonisation of the respiratory tract is favoured by effective cough reduction increased by curarisation and by the irritation of the respiratory mucous membranes.

Ventilator-associated-pneumonia and bloodstream infections are the two most common healthcare-associated infections in pediatric intensive care units (PICU). According to the studies, the overall prevalence of VAP varies from 2% to 32% (2). The incidence is between 1 to 63 VAP per 1000 ventilator days (3) and is higher in university hospitals and in developing countries (4). Early VAP is defined as VAP occurring within 48 to 96 hours after intubation; those occurring after 96 hours of intubation are referred to as late VAP.

Intrinsic factors predisposing for VAP are immunodeficiency, genetic syndrome, subglottic or tracheal stenosis, gastroesophageal reflux, young age (<1year) (5)(6)(7). Extrinsic factors are the length of ventilation, continuous sedation, curarisation, use of steroids, central vascular lines, reintubation and self-extubation, bloodstream infection, prior antibiotic therapy, bronchoscopy, transport out of the PICU, use of enteral feeding and proton pump inhibitors and trauma(8)(9).

Several studies have shown that VAP increases the duration of ventilation, the length of hospitalization and the hospital cost (10)(11). It is the leading cause of antibiotic use in PICU (12) and it is known to cause increased mortality for affected patients (20% versus 7% for patients without VAP (13)).

In PICU at the Saint Denis University Hospital on La Réunion (France), the VAP prevalence from 23/03/2015 to 28/11/2018 was 19,5% (28 VAP/143 patients ventilated more than 48 hours). The rate per year was 11% in 2015, 21% in 2016, 16% in 2017 and 29% in 2018. The average diagnosis of VAP was made after 15,3 days of intubation. Fifty-seven percent of the patients were hospitalized in PICU for pulmonary reasons. The most frequently germs found were *Klebsiella pneumoniae* (14%), *Pseudomonas aeruginosa* (14%), *Strenotrophomonas maltophilia* (10%) and *Enterobacter aerogenes* (10%). *Staphylococcus aureus*, *Acinetobacter*

baumani and *Haemophilus influenzae* were each found in 3% of patients, respectively. Twenty-one percent presented no pathogen.

Although VAP is a real issue in PICU, there is no gold-standard for the diagnosis in the literature (14). However, the diagnosis is most frequently made through the combined use of clinical criteria and chest X-ray (CXR). A commonly used validated pediatric population score for the VAP diagnosis, the Centers of disease control and prevention (CDC) 2018 score (14) (Figure 1) had a sensitivity of 86% and a specificity of 77% (15). It includes clinical criteria such as: fever $>38^{\circ}\text{C}$ or temperature instability, leukopenia (≤ 4000 white blood cells WPC/mm^3) or leukocytosis ($\geq 12\ 000$ for children > 12 years old and $\geq 15\ 000$ WPC/mm^3 for children ≤ 12 years old), new onset or change in character of sputum, new onset or worsening cough or dyspnea or tachypnea, rales or bronchial breath sounds, worsening gas exchange or increased oxygen requirements or ventilator demand. For infants ≤ 1 year old, bradycardia (< 100 $\text{beats}\cdot\text{min}^{-1}$) or tachycardia (> 170 $\text{beats}\cdot\text{min}^{-1}$) are also included. Concerning radiological criteria, one or two CXR (for patients underlying pulmonary or cardiac disease) with new or progressive infiltrate, consolidation cavitation or pneumatocele (in infants ≤ 1 year old) allow to confirm VAP in suspected patients.

Radiological diagnosis of VAP presents some limitations like the absence of radiological signs in early VAP, such as areas not visible on CXR, resulting in a lack of diagnosis of VAP with size inferior of 1 cm (16). For the diagnosis of VAP, consolidations with an aerial bronchogram have a sensibility of 58 to 89% when those of an infiltrate vary from 50 to 78% and a low specificity of 33 to 42% (16). In addition, irradiation of the patient with daily CXR may be deleterious (17). Chest computed tomography provides a better diagnosis than CXR, but is comparatively highly irradiating and requires moving the patient out of the PICU (18).

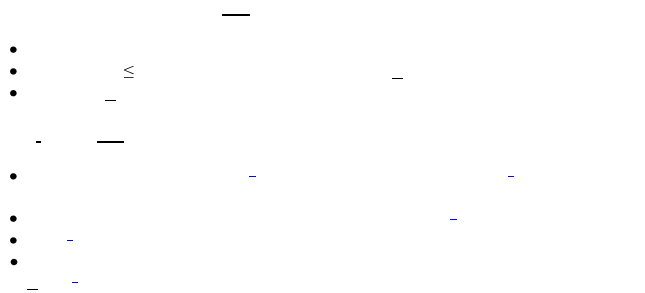

<ul style="list-style-type: none"> • • • • 	
<p>infants ≤ 1</p> <p>for example:</p>	
	<p>ALTERNATE CRITERIA, for child > 1 year old or ≤ 12 years old, at least ____</p> <p>• \leq _____) or leukocytosis ($\geq 15,000$ WBC/mm³)</p> <p>• _____</p> <p>• _____</p> <p>• _____</p>

Figure 1 Diagnostic score of ventilator-associated-pneumonia by the Centers of disease control and prevention (CDC) 2018

Lung ultrasound (LUS) is a non-irradiating examination and can be performed daily at the bedside in PICU. In a healthy lung, the air does not reflect the ultrasound so only the pleural line can be seen. During ventilation, the lung expands and the visceral pleural line slides against the parietal line. This is called pleural gliding. The reverberation of these lines is visualized by horizontal lines, the A lines, which are artefacts. A normally ventilated lung is defined by the pleural gliding and the A lines(19) (Figure 2).

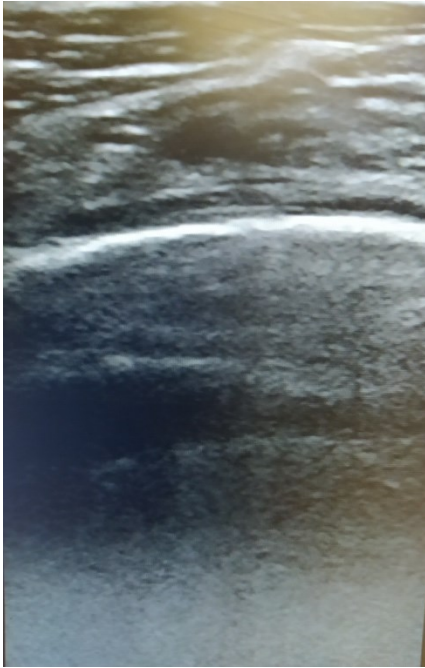


Figure 2 Normal lung in ultra-sound view

B-lines (BL) are hyperechoic vertical lines starting from the pleural line, erasing the A lines. They are generated when lung density increases (increase in hydrostatic pressure or altered capillary permeability) and are significant from 3 B-Lines(19) (Figure 3). They may be physiological in the healthy or bedridden patient(20). Seen together they are defined as “lung rocket” artefact.

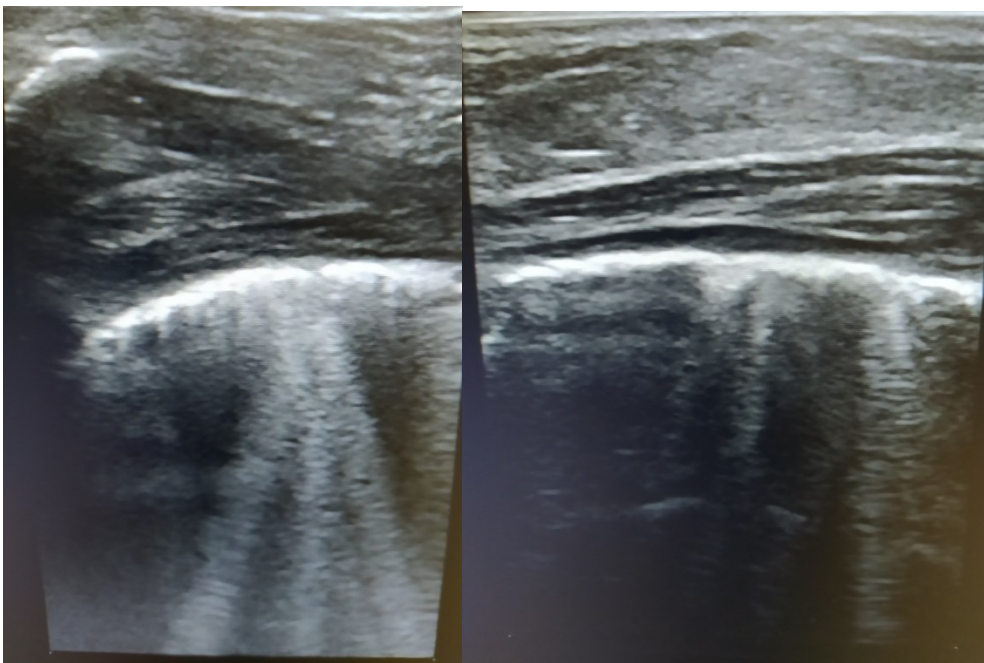


Figure 3 Lung ultrasound view of B-lines

Sub-pleural consolidations (SPC) are small consolidations juxtaposed to the pleura with irregular contours (Figure 4). It is an intermediate stage in the loss of aeration due to pneumonia, between the BL and the appearance of alveolar consolidation.

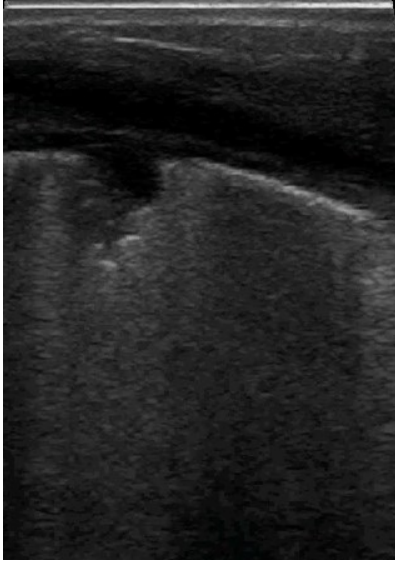


Figure 4 Sub-pleural consolidation.

Consolidations (CS) with or without air bronchogram are visualized when the loss of ventilation is complete, and the lung appears as a tissue structure (Figure 5). It is quite limited. Air bronchogram visualized inside are hyper-echoic. On inhalation, the penetration of air through the bronchial tree into the consolidations reinforces their appearance and forms a dynamic air bronchogram (DAB). If it is static or absent, it can be a sign of atelectasis, pneumonia or pulmonary edema(21).

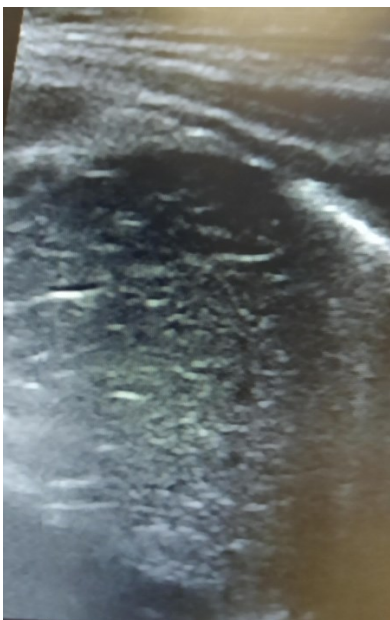


Figure 5 Lung ultrasound view of consolidation without dynamic air bronchogram

Pleural effusion (PE) is visualised as an anechogenic zone separating the two pleural sheets (Figure 6).

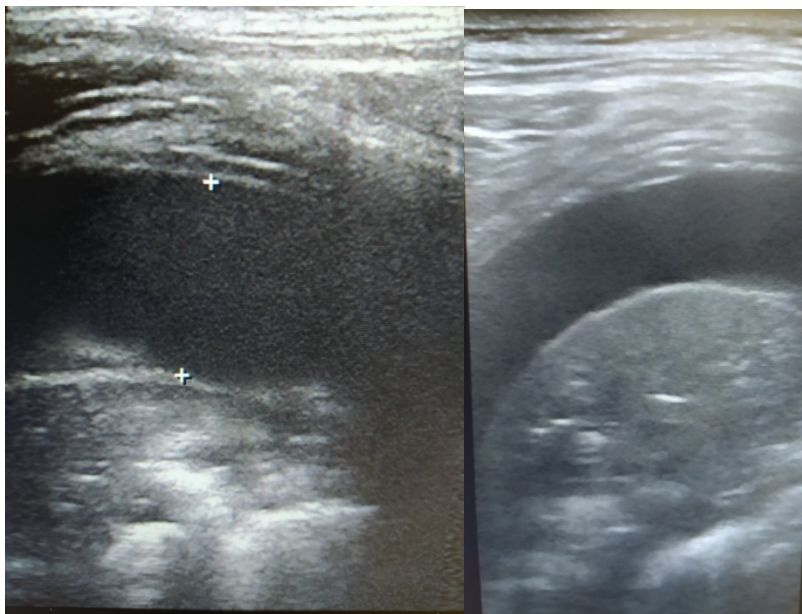


Figure 6 Lung ultrasound views of pleural effusion

The efficiency of LUS has been proven in the diagnosis of community-acquired pneumonia (CAP) in children and it is feasible and safe to substitute LUS for CXR(22). The DAB had a specificity of 97% and a sensitivity of 86%(23).

Lung ultrasound has been successfully applied in adults and neonates for the diagnosis and monitoring of VAP(24)(25). Subpleural consolidations and DAB were the most useful sonographic signs to diagnose VAP in suspected adult patients(26). Some publications suggest that LUS allows VAP diagnosis earlier than CXR(27). However, to our knowledge, no substantial scientific evidence is yet available on whether LUS reliably improves the diagnosis of VAP in PICU.

The primary outcome of this study was to evaluate the LUS performances in the diagnosis of VAP in children. The secondary outcomes were to describe the LUS signs of VAP in children; to evaluate the inter-observer agreement of LUS; to determine the local incidence and ecology of VAP and to compare the diagnostic delay of VAP by LUS and by the CDC score.

Lung ultrasound in diagnosis of ventilator-associated-pneumonia in pediatric intensive care unit: a prospective study.

Justine UGUEN¹, Dr Nicolas BOUSCAREN², Dr Gaëlle PASTURAL³, Dr Etienne DARRIEUX¹, Dr Yael LEVY¹, Dr Lise PEIPOCH¹

¹ Réanimation et USC pédiatrique, CHU Réunion, Saint Denis, La Réunion, France

² Service de santé publique et soutien à la recherche, Inserm CIC 1410, CHU Réunion, Saint Pierre, la Réunion, France

³ Radiologie pédiatrique, CHU Réunion Saint Denis, La Réunion, France

Abstract

Objective: Lung ultrasound (LUS) is an accurate tool to diagnose community-acquired-pneumonias in children and ventilator-associated-pneumonia (VAP) in adults and neonates. The objective is to evaluate the LUS performances in the diagnosis of VAP in a pediatric intensive care unit (PICU).

Design: Monocentric, prospective study between November 1, 2018 and July 31, 2020.

Setting: 5-bed PICU in a tertiary care university hospital.

Patients: All patients under 18 years old that were admitted to the PICU, intubated and mechanically ventilated for more than 48 hours were included.

Interventions: LUS was performed daily and compared to diagnostic of VAP by the center of disease control (CDC) 2018 score identified as the “gold-standard”. Five signs of VAP were studied by LUS (dynamic air bronchogram (DAB), sub-pleural consolidations (SPC), consolidations, B-Lines (BL) and pleural effusion).

Measurements and main results: Fifty-seven patients were included. Median age was 8 [2,7-34.1] months. Nineteen (33%) children developed a VAP, among which 9 (47%) had a microbiological confirmation. The incidence of VAP was 18 (95% CI 10.8-28.1) /1000 days of ventilation. For LUS diagnosis, the most accurate sign was DAB with 94.1 [90.8-96.5] % specificity and 25.0 [7.3-52.4] % sensitivity. With microbiological confirmation, sensitivity

was improved (50 [15.7-84.3] %). Accuracy was improved with the association of LUS and the clinical score: DAB had a positive and negative predictive value of 80 [28.4-99.5] %, and 96 [93.1-97.9] % and BL sensitivity and specificity were 100 [79.4-100] % and 95.5 [92.4-97.6] %, respectively. The simultaneous presence of clinical and microbiological CDC score, DAB and SPC allowed to achieve 67.6 [9.2-99.2] % positive predictive value and 98.0 [95.7-99.3] % negative predictive value.

Conclusion: DAB was the most accurate sonographic sign to diagnose VAP in suspected patients. Association between clinical score and LUS had better diagnosis accuracy than LUS alone.

Introduction

Ventilator-associated-pneumonia (VAP) and bloodstream infections are the two most common healthcare-associated infections in pediatric intensive care units (PICU). According to the studies, the overall prevalence of VAP varies from 2% to 32% (2). The incidence is between 1 to 63 VAP per 1000 ventilator days (3) and is higher in university hospitals and in developing countries (4).

Several studies have shown that VAP increases the duration of ventilation, the length of hospitalization and the hospital cost (10)(11). It is the leading cause of antibiotic use in PICU (12) and it is known to cause increased mortality for affected patients (20% versus 7% for patients without VAP (13)).

Although VAP is a real issue in PICU, there is no gold-standard for the diagnosis in the literature (14). However, the diagnosis is most frequently made through the combined use of clinical criteria and chest X-ray (CXR). A commonly used validated pediatric population score for the VAP diagnosis, the Centers of Disease Control and Prevention (CDC) 2018 score (14), had a sensitivity of 86% and a specificity of 77%(15). It includes clinical criteria such as: fever $>38^{\circ}\text{C}$ or temperature instability, leukopenia (≤ 4000 white blood cells WPC/ mm^3) or leukocytosis ($\geq 12\ 000$ for children > 12 years old and $\geq 15\ 000$ WPC/ mm^3 for children ≤ 12 years old), new onset or change in character of sputum, new onset or worsening cough or dyspnea or tachypnea, rales or bronchial breath sounds, worsening gas exchange or increased oxygen requirements or ventilator demand. For infants ≤ 1 year old, bradycardia (< 100 beats. min^{-1}) or tachycardia (> 170 beats. min^{-1}) are also included. Concerning radiological criteria, one or two CXR (for patients underlying pulmonary or cardiac disease) with new or progressive infiltrate, consolidation cavitation or pneumatocele (in infants ≤ 1 year old) allow to confirm VAP in suspected patients.

Radiological diagnosis of VAP presents some limitations like the absence of radiological signs in early VAP, such as areas not visible on CXR, resulting in a lack of diagnosis of VAP with size inferior of 1 cm (16). For the radiological diagnosis of VAP, consolidations with an aerial bronchogram have a sensibility of 58 to 89% when those of an infiltrate vary from 50 to 78% and a low specificity of 33 to 42% (16). In addition, irradiation of the patient with daily CXR may be deleterious (17). Chest computed tomography provides a better diagnosis than CXR, but is comparatively high irradiating and requires moving the patient out of the PICU (18).

Lung ultrasound (LUS) is a non-irradiating examination and can be performed daily at the bedside in PICU. The efficiency of LUS has been proven in the diagnosis of community-acquired pneumonia (CAP) in children and it is feasible and safe to substitute LUS for CXR(22). The dynamic air bronchogram (DAB) had a specificity of 97% and a sensitivity of 86%(23). Lung ultrasound has been successfully applied in adults and neonates for the diagnosis and monitoring of VAP(24)(25). Subpleural consolidations and DAB were the most useful sonographic signs to diagnose VAP in suspected adult patients(26). Some publications suggest that LUS allows VAP diagnosis earlier than CXR(27). However, to our knowledge, no substantial scientific evidence is yet available on whether LUS reliably improves the diagnosis of VAP in PICU.

The primary outcome of this study was to evaluate the LUS performances in the diagnosis of VAP in children patients. The secondary outcomes were to describe the LUS signs of VAP in children; to evaluate the inter-observer agreement of LUS; to determine the local incidence and ecology of VAP and to compare the diagnostic delay of VAP by LUS and by the CDC criteria.

Materials and methods

Study design and setting

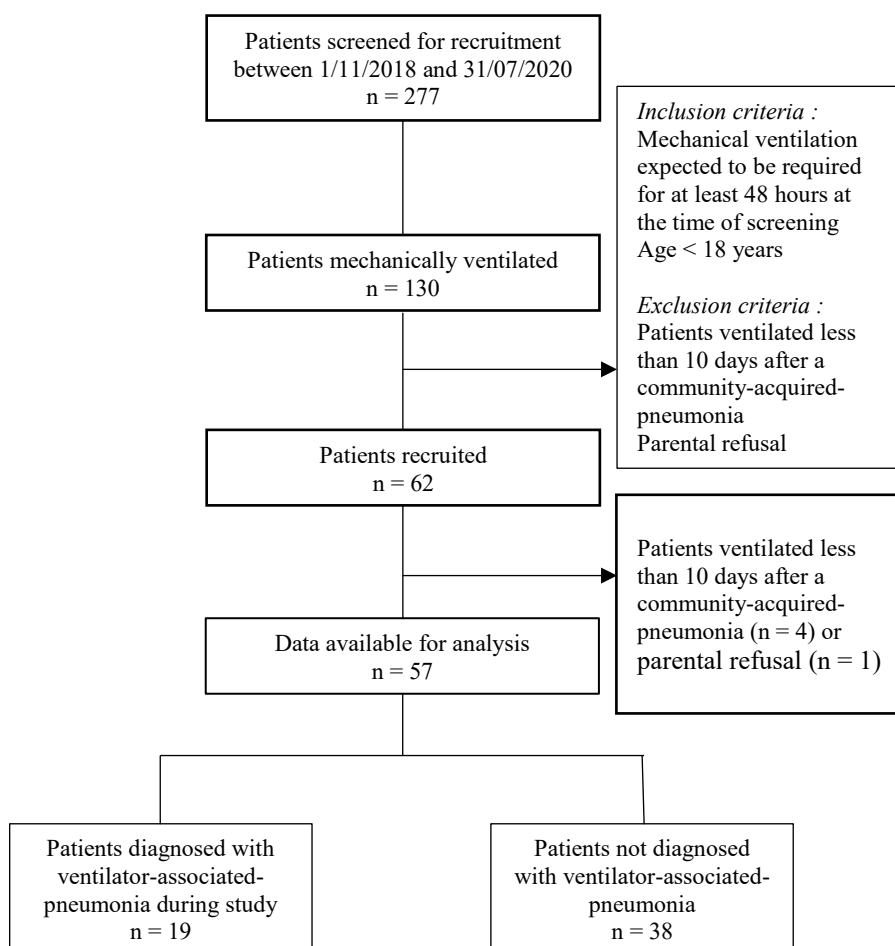
This single-center observational study prospectively involved mechanically ventilated children admitted in our mixed PICU (post-surgical and medicine) between November 1, 2018 and July 31,2020. Our PICU is located in a tertiary care university hospital in the North of La Réunion island (French overseas department in the Indian Ocean). It is a 5-bed multidisciplinary care unit.

Participants

All the patients from birth up to 18 years old admitted in our unit, and mechanically ventilated for more than 48 hours (orotracheal or nasotracheal intubation or tracheotomy) were included. The patients were discharged from the study on the day of diagnosis of VAP or, in the absence of VAP, 48 hours after extubation. Data of patients with CAP at intubation were analysed after healing (10 days after pneumonia diagnosis).

Sixty-two patients were ventilated more than 48 hours. Four patients were excluded because they had a CAP and were ventilated less than 10 days after diagnosis. One patient was excluded due to parent refusal. As a result, a total of 57 patients were prospectively included (Figure 7).

Figure 7: Flow-chart



Data collection

Data collected during the PICU stay concerned demographic information, underlying illness, patient severity (with Pediatric Risk of Mortality scores (PRISM II) (28), and PEdiatric Logistic Organ Dysfunction score (PELOD-2) at discharge (29)), PICU length of stay, duration of mechanical ventilation, and mortality. Data on risk factors such as enteral feeding, proton pump inhibitors and corticosteroids use, curarization, number of re-intubation, supine positioning and presence of endotracheal cuff pressure were collected (13)(8).

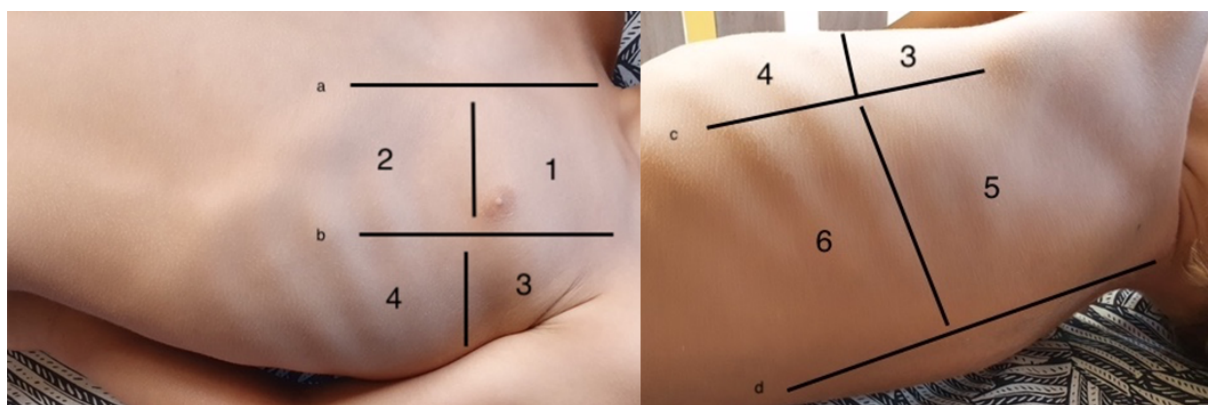
We used as gold-standard of VAP diagnosis a clinical and radiologic score, according to criteria established by CDC score 2018. Clinical scores were calculated daily by the medical

team caring for the patient until 48 hours after extubation. A frontal CXR was performed when clinical criteria were present. Chest X-ray were interpreted by an expert paediatric radiologist from the University Hospital of the PICU to confirm the VAP diagnosis. Respiratory cultures, as bronchoalveolar lavage (BAL), protected specimen brush (PSB) or endotracheal aspirate (ETA), were obtained by the clinical team caring for the patient and analysed in our bacteriology laboratory. Threshold values for cultured specimens were $\geq 10^3$ colony-forming units (CFU) per milliliter (mL) for PSB, $\geq 10^4$ CFU/mL for BAL and $\geq 10^5$ CFU/mL for ETA(30).

Prior to the study, all physicians had the same training in LUS, including reminders about the terminology used in the study during one hour. LUS was performed daily by a member of the medical team (residents or senior doctors) using a linear probe, L-15 or L-12 according to the patient's size (respective frequency range 7-15MHz; 3-12MHz) with a commercial bedside ultrasound system (CX50 POC system Philips Ultrasounds, Andover, USA).

Each hemithorax was divided in 3 areas between the anterior and the posterior axillary lines: anterior, lateral and posterior (Figure 8). Each area was divided into superior and inferior halves. Six zones were studied for each of the two lungs. A clip for each view was realized and reviewed retrospectively by one of the investigators blind to the diagnosis of VAP to analyse the LUS performances. To calculate the inter-observer reliability between medical team and investigators, we used all over the clips realized on the 57 patients included.

Figure 8: LUS examination areas



a= parasternal line, b= anterior axillary line, c= posterior axillary line, d= paravertebral line, 1= antero-superior area, 2= antero-inferior area, 3= latero-superior area, 4= latero-inferior area, 5=postero-superior area 6= postero-inferior area

Five LUS signs were collected: air bronchogram (DAB), sub-pleural consolidation (SPC) ≥ 2 per area(26), lung consolidation (CS) without DAB, B-lines (BL) ≥ 3 per area(19) and pleural effusion (PE).

Statistical analyses

Qualitative variables were expressed as numbers and percentages, and quantitative variables were expressed as medians [Q1-Q3]. VAP/no VAP patients were compared using the Pearson's chi-squared test or the Fisher exact test for categorical variables, and the Student's t-test or the Mann-Whitney U test for quantitative variables as appropriate, respectively. The significance level was set to 5%. VAP incidence was expressed as the number of VAP infections per 1000 mechanical ventilator days. Sensitivity, specificity, positive/negative predictive value were calculated for each LUS sign with and without CDC criteria. Statistical uncertainty was indicated by reporting [95% Confidence Intervals]. Inter-observer agreement was based on the analysis of the two independent series of measurement. Reproducibility was evaluated by Cohens's kappa coefficient. All analyses were performed using Stata V13 software (StataCorp LP, College Station, TX).

Ethics statement

This study was approved by the "Comité de Protection des Personnes Sud Méditerranée III" (number 2019.07.02 bis_ 19.05.15.40407). The data were collected, recorded and stored after having informed and obtained written consent from a parent or legal guardian for each participant.

Results

Population characteristics are detailed in Table 1. Age at intubation was 8 [2.7-34.1] months, respiratory failure was the main reason for hospitalization (61,4%). The length of intubation was 14 [9-20] days and the length of stay in PICU was 26 [17-47] days, 7 patients died during the PICU hospitalization.

The LUS performances in patients with VAP are summarized in Table 2. The presence of both signs (DAB and SPC) was highly specific (95.9 [92.9-97.8] %). B-lines had the best sensitivity (100 [79.4-100] %) and the best negative predictive value (NPV) (100 [86.8-100] %) and DAB (94.1 [90.8-96.5] %) the best specificity.

Table 1 : Patients' main clinical characteristics

	Total population^a (n=57)	VAP^a (n=19)	no VAP^a (n=38)	p^b
Sex				0.001
Female	25 (43.9)	14 (73.7)	11 (29.0)	
Male	32 (56.1)	5 (26.3)	27 (71.1)	
Age at intubation (months)	8.0 [2.7-34.1]	8.7 [3.6-128.1]	7.8 [2.1-29.3]	0.015
Age categories				0.47
New-born [0-1months]	8 (14.0)	2 (10.5)	6 (15.8)	
Infant [1month – 2years]	31 (54.4)	9 (47.4)	22 (57.9)	
Child [2 - 18years]	18 (31.6)	8 (42.1)	10 (26.3)	
Weight (kg)	13.2 [4.2-17]	6.5 [4.2-27]	5.35 [4.2-13]	0.536
Chronic pathology				
Pulmonary	18 (31.5)	6 (31.6)	12 (31.6)	1
Cardiovascular	18 (31.5)	6 (31.6)	12(31.6)	1
Neurological	15(26.3)	5 (26.3)	10(26.3)	1
Immunosuppressed	2 (3.5)	0	2 (5.3)	0.548
Reason for hospitalization				
Cardio-vascular	14(24.6)	4(21.1)	10(26.3)	0.754
Respiratory	35(61.4)	12(63.2)	23(60.5)	0.847
Neurological	8(14.0)	5(26.3)	3(7.9)	0.102
Other	14(24.5)	4(21)	10(26.3)	0.754
PRISM	17.5 [11-25]	22 [16-30]	14 [11-22]	0.051
PELOD	20.5 [10.5-31]	21 [20-32]	20 [10-31]	0.308
PICU entry mode				0.65
Domicile/Emergencies	7 (12)	3 (15.8)	4 (10.5)	
Medical evacuation	23 (40.6)	7 (36.8)	16 (42.1)	
Operating room	10 (17.5)	2 (10.5)	8 (21.1)	
Other service	17 (29.8)	7 (36.8)	10 (26.3)	
Community-acquired-pneumonia	21(36.8)	5(26.3)	16(42.1)	0.244
Length of intubation (days)	14 [9-20]	19 [11-35]	12 [7-17]	0.08
Endotracheal tube cuff	43 (75.4)	15 (79.0)	28 (73.7)	0.754
Reintubation	20 (35)	6(31.6)	14(36.8)	0.695
Type of mechanical ventilation				0.758
Oro-tracheal	37 (64.9)	13 (68.4)	24 (63.2)	
Naso-tracheal	16 (28.1)	6 (31.6)	10 (26.3)	
Tracheotomy	2 (3.5)	0	2 (5.3)	
Non-invasive ventilation before intubation	27 (47.4)	11 (57.9)	16 (42.1)	0.26
ARDS	23 (41.1)	10 (55.6)	13 (34.2)	0.129
Pulmonary hypertension	20 (35.1)	9 (47.4)	11 (29.0)	0.17
Extra-corporal membrane oxygenation	11 (19.3)	5 (26.3)	6 (15.8)	0.478
Supine positioning	48 (84.2)	16 (84.2)	32 (84.2)	1
Proton pump inhibitors	19 (33.3)	9 (47.4)	10 (26.3)	0.112
Enteral feeding	52 (98.9)	19 (100)	33 (89.2)	0.288
Corticosteroids	36 (63.2)	13 (68.4)	23 (60.5)	0.56
Neuromuscular blocking agents	44 (77.2)	18 (94.7)	26 (68.4)	0.042
PICU length of hospitalisation (days)	26 (17-47)	28(19-54)	23 (12-47)	0.445
Mortality in PICU	7 (12.3)	3 (15.8)	4 (10.5)	0.675

^aData are presented as number (%) or median (interquartile range).

^bVAP/no VAP were compared using the Pearson's chi-squared test of the Fisher exact test for categorical variables, and the Students's t-test or the Mann-Whitney U test for quantitative variables as appropriate, respectively. VAP = ventilator-associated-pneumonia, PRISM II = PICU admission Pediatric Risk of Mortality scores II, PELOD-2 = PEdiatric Logistic Organ Dysfunction score 2, PICU = pediatric intensive care unit, ARDS = acute respiratory distress syndrome.

For the diagnosis of VAP with the association of LUS and clinical criteria by the CDC score, DAB had a positive predictive value (PPV) of 80 [28.4-99.5] %, a NPV of 96 [93.1-97.9] %. B-lines had a sensitivity of 100 [79.4-100] % and a specificity of 95.5 [92.4-97.6] %.

Table 2: Lung ultrasound performances in the diagnosis of ventilator-associated-pneumonia

	Sensitivity ^a	Specificity ^a	PPV ^a	NPV ^a	Correctly classified ^a
DAB	25 [7.3-52.4]	94.1 [90.8-96.5]	19 [5.4-41.9]	95.8 [92.8-97.8]	90.5 [86.7-93.6]
cCDC + DAB	25 [7.3-52.4]	99.7 [98.1-100]	80 [28.4-99.5]	96 [93.1-97.9]	95.7 [92.8-97.7]
SPC	50 [24.7-75.3]	35.2 [29.7-41]	4.1 [1.8-7.9]	92.7 [86.2-96.8]	35.9 [30.6-41.6]
cCDC + SPC	50 [24.7-75.3]	97.2 [94.6-98.8]	50 [24.7-75.3]	97.2 [94.6-98.8]	94.8 [91.6-97]
DAB + SPC	12.5 [1.6-38.3]	95.9 [92.9-97.8]	14.3 [1.8-42.8]	95.2 [92.1-97.4]	91.5 [87.8-94.4]
cCDC + (DAB + SPC)	12.5 [1.6-38.3]	99.7 [98.1-100]	66.7 [9.4-99.2]	95.4 [92.3-97.4]	95.1 [92-97.2]
BL	100 [79.4-100]	9 [5.9-12.9]	5.7 [3.3-9.1]	100 [86.8-100]	13.7 [10.1-18.1]
cCDC + BL	100 [79.4-100]	95.5 [92.4-97.6]	55.2 [35.7-73.6]	100 [98.7-100]	95.7 [92.8-97.7]
CS	68.8 [41.3-89]	44.5 [38.7-50.4]	6.4 [3.2-11.2]	96.3 [91.5-98.8]	45.8 [40.1-51.5]
cCDC + CS	68.8 [41.3-89]	97.6 [95.1-99]	61.1 [35.7-82.7]	98.3 [96-99.4]	96.1 [93.2-98]
PE	37.5 [15.2-64.6]	84.1 [79.4-88.1]	11.5 [4.4-23.4]	96.1 [92.9-98.1]	81.7 [76.9-85.9]
cCDC + PE	37.5 [15.2-64.6]	97.9 [95.5-99.2]	50 [21.1-78.9]	96.6 [93.8-98.4]	94.8 [91.6-97]

^aData are given as % and 95% confidence intervals. PPV = predictive positive value, NPV = negative predictive value, cCDC = clinical CDC score, DAB = consolidation with dynamic air bronchogram, SPC = sub-pleural consolidation, BL = B-lines, CS = consolidation without dynamic air bronchogram, PE = pleural effusion.

The diagnostic performances of the combination of LUS and the clinical diagnosis of VAP by CDC score with microbiological confirmation are depicted in Table 3. For the diagnostic of VAP, DAB had 50 [15.7-84.3] % sensitivity. The simultaneous presence of DAB and SPC produced 66.7 [9.4-99.2] % of PPV and 98 [95.7-99.3] % of NPV.

Table 3: Lung ultrasound performances in the diagnosis of ventilator-associated-pneumonia with microbiologic confirmation

	Sensitivity ^a	Specificity ^a	PPV ^a	NPV ^a	Correctly classified ^a
DAB	50 [15.7-84.3]	94.3 [91-96.6]	19 [5.4-41.9]	98.6 [96.4-99.6]	93.1 [89.7-95.7]
cCDC + DAB	50 [15.7-84.3]	99.7 [98.1-100]	80 [28.4-99.5]	98.7 [96.6-99.6]	98.4 [96.2-99.5]
SPC	50 [15.7-84.3]	35.6 [30.1-41.3]	2 [0.6-5.1]	96.4 [91-99]	35.9 [30.6-41.6]
cCDC + SPC	50 [15.7-84.3]	96 [93-97.9]	25 [7.3-52.4]	98.6 [96.5-99.6]	94.8 [91.6-97]
DAB + SPC	25 [3.2-65.1]	96 [93.1-97.9]	14.3 [1.8-42.8]	97.9 [95.6-99.2]	94.1 [90.9-96.5]
cCDC + (DAB + SPC)	25 [3.2-65.1]	99.7 [98.1-100]	66.7 [9.4-99.2]	98 [95.7-99.3]	97.7 [95.3-99.1]
BL	100 [63.1-100]	8.7 [5.8-12.5]	2.9 [1.2-5.6]	100 [86.8-100]	11.1 [7.8-15.2]
cCDC + BL	100 [63.1-100]	92.9 [89.4-95.6]	27.6 [12.7-47.2]	100 [98.7-100]	93.1 [89.7-95.7]
CS	50 [15.7-84.3]	43.6 [37.9-49.5]	2.3 [0.6-5.8]	97 [92.5-99.2]	43.8 [38.2-49.6]
cCDC + CS	50 [15.7-84.3]	95.3 [92.2-97.4]	22.2 [6.4-47.6]	98.6 [96.4-99.6]	94.1 [90.8-96.5]
PE	37.5 [8.5-75.5]	83.6 [78.9-87.6]	5.8 [1.2-15.9]	98 [95.5-99.4]	82.4 [77.6-86.5]
cCDC + PE	37.5 [8.5-75.5]	97 [94.3-98.6]	25 [5.5-57.2]	98.3 [96.1-99.4]	95.4 [92.4-97.5]

^aData are given as % and 95% confidence intervals. PPV = predictive positive value, NPV = negative predictive value, cCDC = clinical CDC score, DAB = consolidation with dynamic air bronchogram, SPC = sub-pleural consolidation, BL = B-lines, CS = consolidation without dynamic air bronchogram, PE = pleural effusion.

Three patients did not have a LUS on the day of VAP diagnosis. Among the 16 patients with LUS on the day of VAP diagnosis, 16 had BL, 11 had CS without DAB, 8 had SPC, 6 had PE and 4 had DAB.

Concerning inter-observer reproducibility for LUS signs, a low agreement between operators was found for DAB ($\kappa = 0.4$, $p < 0.001$) and for CSP ($\kappa = 0.3$, $p = 0.002$). A moderate agreement was observed for BL ($\kappa = 0.5$, $p < 0.001$), for CS ($\kappa = 0.52$, $p < 0.001$) and for pleural effusion ($\kappa = 0.48$, $p < 0.001$).

Nineteen (33%) patients had a VAP diagnosed with clinical and radiological CDC score 2018 positive. The incidence of VAP was 18 [10.8-28.1] /1000 days of ventilation. Median time between intubation and diagnosis of VAP by CDC score was 9 [4-14] days. Twenty-six percent (5/19) were early VAP (< 5 days), 74% (14/19) were late VAP (≥ 5 days).

Nine out of 19 (47%) patients had a bacteriological confirmation with the CDC 2018 criteria. Three patients had a positive ETA but at an insignificant rate (10^4 CFU/mL). The most frequent bacteriological sampling was ETA (19/20 samples), one patient had a BAL. None had PSB. The most common organism isolated was *Pseudomonas aeruginosa* (3 (15%) patients). *Haemophilus influenzae* and *Klebsiella pneumoniae* were each isolated in 2 (10%) patients. *Staphylococcus aureus*, *Enterobacter cloacae*, *Stenotrophomonas maltophilia* and *Rhinovirus* were each found in 5% of patient. Two ETAs were positive for multiple pathogens.

Concerning the diagnosis delay by LUS, 5/11 patients had SPC and 0/11 had a DAB the day-before VAP diagnosis by the gold-standard.

Discussion

Lung ultrasound signs of VAP

To our knowledge, it is the first study dealing with the LUS diagnosis of VAP in the pediatric population.

The results of this study suggested that DAB was the most accurate sonographic signs for VAP diagnosis in suspected patients. In the literature, DAB is the most specific sign of VAP

in adults(24), as confirmed in our results with a specificity of 94.1 [90.8-96.5] %). However, DAB sensitivity in this case was 25 [7.3-52.4] % which is lower than in previous studies(31). In a prospective study, with the performance of LUS during 5 successive days beginning the first day of intubation, Berlet and *al* (31) found a sensitivity of 92% and a specificity of 65% for DAB or fluid bronchogram. In their study, they did not use radiological diagnostic criteria. In another prospective multicentre study (Italy, France, Canada), Mongodi and *al* (26) analysed 99 adult patients (63 with and 36 without VAP) with a clinical and radiological diagnosis of VAP. In these circumstances, DAB sensitivity was 44% and DAB specificity was 81%. For SPC, sensitivity was 81% and specificity 41%. The specificity was better when sonographic signs were present in different zones (97% for DAB and 56% for SPC). With SPC and DAB combined, PPV was 86%, for which our results showed 14.3 [1.8-42.8] % (26). Berlet and *al* did not use SPC as a sign of VAP because they would have been very common in anterior and lateral areas(31), even if they obtained 81% specificity and 41% sensibility.

Consolidations with static air bronchogram show a loss of pulmonary aeration and may be caused by other etiologies such as atelectasis (32). In our study, CS was a sensitive sign (68.8 [41.3-89] %), but with limited PPV (6.4 [3.5-12] %). B-lines were very common (specificity of 9 [5.9-12.9] %) in intubated patients but combined with clinical CDC criteria (cCDC), they became very specific (95.5 [92.4-97.6] %) for VAP, but the PPV remained moderate (55.2 [35.7-73.6] %). In the literature, BL are rarely included in a diagnostic score, as they are frequently found in both VAP group and non-VAP group(25). In our study, BL were also the most frequent sign found in the day of the clinical and radiological diagnosis of VAP (100% of VAP) before CS (68%).

Lung ultrasound scores

Many non-infectious processes may cause fever and pulmonary infiltration in patients with mechanical ventilatory support, symptoms of VAP are nonspecific (16)(33). Although VAP are a major cause of morbimortality in PICU, the diagnosis is difficult because there is no universally validated score (14). The score most commonly used when writing the protocol, the CDC 2018, has drawbacks, particularly the diagnostic performance of the CXR (34). Levinsky and *al*, studied the inter-observer reproducibility in diagnosis of CAP with CXR. There was a poor interobserver agreement, especially among residents, which may impact major clinical decisions. There is a need to systematically train physicians in CXRs reading (35).

However, there is no diagnostic score including LUS in children presently. In this study, the combined use of cCDC and LUS was more accurate than LUS alone for the diagnosis of

VAP. We showed this in particular for the BL and for the SPC, with an improvement in specificity from 9 to 100% and 35 to 97% respectively. Although its sensitivity was low, DAB coupled with cCDC score had excellent PPV and PNV as well as a specificity close to 100%. Moreover, when microbiological confirmation was additionally performed, the sensitivity of DAB increased by 50 [15.7-84.3] % to 25 [7.3-52.4] %.

In neonatal intensive care unit (NICU), Tusor and *al* (25) used a predictive score including temperature, change in pulmonary secretions, respiratory deterioration, LUS results (consolidation > 0.5cm, pleural effusion, DAB) and results of microbiological sampling on the third day of the infection. It was compared with VAP defined by the “NICU Lucerne score” including clinical criteria, CXR and CRP(36). The new score including LUS had a better sensitivity on first day than the score coupled with the CXR (94% versus 81%).

Several adult studies have suggested combined scores because they have a better accuracy for VAP diagnosis than LUS alone(24)(37). Zagli and *al* (38) created a new score based on Procalcitonin, called chest echography and pulmonary infection Score (CEPPIS) and they had an 80% sensitivity and an 85% specificity. CEPPIS was better in predicting VAP than clinical pulmonary infection score (CPIS) (sensitivity 39.8% and specificity 83.3%). Moreover, Haliloglu and *al* studied their score called the lung ultrasound and pentraxin-3 pulmonary infection score (LUPPIS) including temperature, pentatrix-3, pa02/fi02, tracheal secretions, LUS score (2 areas SPC or 1 with DAB) and tracheal culture. Sensitivity and specificity were better for LUPPIS (87.5% and 91.3% respectively) than CPIS (43.8% and 82.6%) (37). Finally, by including the Gram reading in the ultrasound score, Mongodi and *al* obtained a specificity of 97% without waiting for the microbiological culture (26).

Inter-observer agreement

This current practice study demonstrated operator-dependant variability. DAB had low reproducibility but also low prevalence. The CS had the best inter-observer agreement. It concurs with the meta-analysis of Tsou and *al* (39) which studies the accuracy of LUS diagnosis performed by advanced and novice sonographers for CAP. More experienced sonographers had a better diagnosis accuracy. The literature obtains better results when interpretations are made by experts or well-trained physicians(40). Tusor and *al* found an excellent inter-agreement of 0.89 (95% CI 0.8-0.95) in LUS scoring, the only disagreement was identifying DAB(25). Additional training is required to improve performance, especially for residents who were largely involved in the first interpretation (41).

Incidence

Our rate of pneumonia was 33% and the incidence was 18,0 [10.8-28.1] /1000 days of ventilation. These results are close to the data for developing countries, like India or Egypt(3). Staub and *al's* meta-analysis on the ultrasound diagnosis of adult VAP also found high prevalence (38% to 64%)(24). Although on the same territory, we have a higher incidence than a similar study carried out in adult intensive care unit (ICU) in Saint Pierre, in 2015(27). VAP incidence was 13%, diagnosed with CPIS score. Faced with this high local incidence, we need to improve the “VAP Bundles” of our PICU, which have proven to be effective (42). It includes for example, hand hygiene, head elevation from 30 to 45°, continuous control of tracheal cuff pressure(43), daily evaluation of sedation and no change of the ventilation circuits if not necessary (42).

Local ecology

Concerning the local ecology of VAP, we found the same data as in the literature (3)(44). The majority of the infections were caused by gram-negative. Main pathogen was *Pseudomonas aeruginosa*. They are mainly isolated in late-onset lung disease, unlike *Haemophilus influenzae*, which is more common in early-onset lung disease(44). A retrospective study conducted in our department between 2015 and 2018 found the same distribution. The proportion of gram-positive *cocci* infections, mainly *Staphylococcus aureus*, is higher in Europe and the USA. According to the literature, the rate of viral VAP would be underestimated(44).

Limitations

Our study presented several limitations. The main limitations of our cohort were its relatively small sample size and a low number of VAP analysed. As a result, it was not possible to undertake multivariate analysis adjusting for cofounders. In some cases, we met difficulties to perform LUS, mainly due to the presence of pleural or pericardial drain, sternotomy dressing, study of posterior zones with ECMO, ventilation with high frequency oscillation. LUS was not available in every VAP episode, depending on workload and available medical staff. For consolidations, recruitment manoeuvre, although a dynamic and important element to explore further, was not attempted

Some authors decided to exclude CAP at admission (24). According to the CDC, the CAP had a 7-day infection window period, so we chose to include 10 days after their diagnosis(45). But, LUS signs may persist 14 days after diagnosis(46). Therefore, the

performance of LUS for the diagnosis of VAP may be lower in our study, but not including patients with CAP on admission would not have reflected current practice.

Therefore, substituting LUS for CXR in diagnosis of VAP needs to be explored further with larger studies.

Conclusion

In summary, LUS is an accurate lung-imaging tool to assist VAP diagnosis. Combining ultrasound signs with clinical and microbiological data provides even greater accuracy. Multicenter studies with larger population need to be performed in order to create and validate a predictive VAP score including LUS in PICU.

Acknowledgments

We are grateful for all families and staff on the PICU at Saint Denis University Hospital for supporting the project. Thanks to V.Kyulavki, I. El Ghernougui and A.Burtz for their editorial help.

Conflict of interest statement

All authors have disclosed that they do not have any conflicts of interest.

Discussion

Lung ultrasound signs of VAP

To our knowledge, it is the first study dealing with the LUS diagnosis of VAP in the pediatric population.

The results of this study suggested that DAB was the most accurate sonographic signs for VAP diagnosis in suspected patients. In the literature, DAB is the most specific sign of VAP in adults(24), as confirmed in our results with a specificity of 94.1 [90.8-96.5] %. However, DAB sensitivity in this case was 25 [7.3-52.4] % which is lower than in previous studies(31). In a prospective study, with the performance of LUS during 5 successive days beginning the first day of intubation, Berlet and *al* (31) found a sensitivity of 92% and a specificity of 65% for DAB or fluid bronchogram. In their study, they did not use radiological diagnostic criteria. In another prospective multicentre study (Italy, France, Canada), Mongodi and *al* (26) analysed 99 adult patients (63 with and 36 without VAP) with a clinical and radiological diagnosis of VAP. In these circumstances, DAB sensitivity was 44% and DAB specificity was 81%. For SPC, sensitivity was 81% and specificity 41%. The specificity was better when sonographic signs were present in different zones (97% for DAB and 56% for SPC). With SPC and DAB combined, PPV was 86%, for which our results showed 14.3 [1.8-42.8] % (26). Berlet and *al* did not use SPC as a sign of VAP because they would have been very common in anterior and lateral areas(31), even if they obtained 81% specificity and 41% sensibility.

Consolidations with static air bronchogram show a loss of pulmonary aeration and may be caused by other etiologies such as atelectasis (32). In our study, CS were a sensitive sign (68.8 [41.3-89] %), but with limited PPV (6.4 [3.5-12] %). B-lines were very common (specificity of 9 [5.9-12.9] %) in intubated patients but combined with clinical CDC criteria (cCDC), they became very specific (95.5 [92.4-97.6] %) for VAP, but the PPV remained moderate (55.2 [35.7-73.6] %). In the literature, BL are rarely included in a diagnostic score, as they are frequently found in both VAP group and non-VAP group(25). In our study, BL were also the most frequent sign found in the day of the clinical and radiological diagnosis of VAP (100% of VAP) before CS (68%).

Many non-infectious processes may cause fever and pulmonary infiltration in patients with mechanical ventilatory support, symptoms of VAP are nonspecific (16)(33). Although VAP are a major cause of morbimortality in PICU, the diagnosis is difficult because there is no universally validated score (14). The score most commonly used when writing the protocol, the CDC 2018, has drawbacks, particularly the diagnostic performance of the CXR (34). Levinsky and *al*, studied the inter-observer reproducibility in diagnosis of CAP with CXR. There was a poor interobserver agreement, especially among residents, which may impact major clinical decisions. There is a need to systematically train physicians in CXRs reading (35).

The CDC introduced a new algorithm for the surveillance of VAP in 2013, with a pediatric definition in 2015: the Pediatric ventilator-associated-event (Ped-VAE). It includes the positive end-expiratory pressure (PEEP) and the fraction of inspired oxygen (FiO₂). Thus, the Ped-VAE exclude potentially subjective interpretations of radiographic or clinical findings. According to Peña-Lopez and *al*, the Ped-VAE algorithm had more accuracy in predicting outcomes by characterizing lower oxygenation changes and identifying hypoxaemia severity, a major driver of management (47). But Cirulis and *al* showed that adult VAE criteria with modified pediatric criteria, had good specificity (99%), but low sensitivity (46%) compared to CDC score 2015 in a population of pediatric traumatic brain injury patients(48). Implemented in current form, the VAE criteria would miss a large number of VAP diagnoses, which may result in higher PICU morbidity and mortality (49).

However, there is no diagnostic score including LUS in children presently. In this study, the combined use of cCDC and LUS was more accurate than LUS alone for the diagnosis of VAP. We showed this in particular for the BL and for the SPC, with an improvement in specificity from 9 to 100% and 35 to 97% respectively. Although its sensitivity was low, consolidations with DAB coupled with CDC score had excellent positive and negative predictive values as well as a specificity close to 100%. Moreover, when microbiological confirmation was additionally performed, the sensitivity of DAB rises to 50 [15.7-84.3] % versus 25 [7.3-52.4] %.

In neonatal intensive care unit (NICU), Tusor and *al* (25) used a predictive score including temperature, change in pulmonary secretions, respiratory deterioration, LUS results (consolidation > 0.5cm, pleural effusion, DAB) and results of microbiological sampling on the third day of the infection. It was compared with VAP defined by the “NICU Lucerne score”

including clinical criteria, CXR and CRP(36). The score including LUS had a better sensitivity on first day than the score coupled with the CXR (94% versus 81%).

Several adult studies have suggested combined scores because they have a better accuracy for VAP diagnosis than LUS alone(24)(37). Zagli and *al* (38) created a new score based on Procalcitonin, called chest echography and pulmonary infection Score (CEPPIS) and they had an 80% sensitivity and an 85% specificity. CEPPIS was better in predicting VAP than clinical pulmonary infection score (CPIS) (sensitivity 39.8% and specificity 83.3%). Moreover, Haliloglu and *al* studied their score called the lung ultrasound and pentraxin-3 pulmonary infection score (LUPPIS) including temperature, pentatrix-3, paO₂/fiO₂, tracheal secretions, LUS score (2 areas SPC or 1 with DAB) and tracheal culture. Sensitivity and specificity were better for LUPPIS (87.5% and 91.3% respectively) than CPIS (43.8% and 82.6%) (37). Finally, by including the Gram reading in the ultrasound score, Mongodi and *al* obtained a specificity of 97% without waiting for the microbiological culture (26).

Inter-observer agreement

This current practice study demonstrated operator-dependant variability. DAB had low reproducibility but also low prevalence. The CS had the best inter-observer agreement. It concurs with the meta-analysis of Tsou and *al* (39) which studies the accuracy of LUS diagnosis performed by advanced and novice sonographers for CAP. More experienced sonographers had a better diagnosis accuracy. The literature obtains better results when interpretations are made by experts or well-trained physicians(40). Tusor *and al* found an excellent inter-agreement of 0.89 (95% CI 0.8-0.95) in LUS scoring, the only disagreement was identifying DAB(25). Additional training is required to improve performance, especially for residents who were largely involved in the first interpretation (41).

Incidence

Our rate of pneumonia was 33% and the incidence was 18,0 [10.8-28.1] /1000 days of ventilation. These results are close to the data for developing countries, like India or Egypt(3). Staub and *al*'s meta-analysis on the ultrasound diagnosis of adult VAP also found high prevalence (38% to 64%)(24). Although on the same territory, we have a higher incidence than a similar study carried out in an adult intensive care unit (ICU) in La Réunion, in 2015(27). VAP incidence was 13%, diagnosed with CPIS score. Faced with this high local incidence, we need to improve the “VAP Bundles” of our PICU, which have proven to be effective (42). It includes for example, hand hygiene, head elevation from 30 to 45°, continuous control of

tracheal cuff pressure(43), daily evaluation of sedation and no change of the ventilation circuits if not necessary (42).

Local ecology

Concerning the local ecology of VAP, we found the same data as in the literature (3)(44). The majority of the infections were caused by gram-negative. Main pathogen was *Pseudomonas aeruginosa*. They are mainly isolated in late-onset lung disease, unlike *Haemophilus influenzae*, which is more common in early-onset lung disease(44). A retrospective study conducted in our department between 2015 and 2018 found the same distribution. The proportion of gram-positive *cocci* infections, mainly *Staphylococcus aureus*, is higher in Europe and the USA. The rate of viral VAP would be underestimated(44).

Concerning bacteriological samples, endotracheal cultures are sensitive but not specific(50) and this was the most used technique in our study (19/20 samplings). Positive bacterial cultures of tracheal aspirates increase rapidly after intubation and usually include bacteria considered to be pathogens. Tracheal aspirate cultures do not appear to distinguish between infection and colonization(51). It is rather recommended to carry out protected specimen brush(52). It does not require bronchoscopic technique. Sixteen percent (3/19) of our patients were not on antibiotic therapy when VAP was diagnosed. Three patients with VAP had a bacteremia but not with the same pathogen. Twenty (35%) patients had bacterial resistance, of which 26% (15/57) a multi-resistant-bacteria, 2% (1/57) a methicillin-resistant staphylococcus, and 7% (4/57) an extended-spectrum beta-lactamase. Two ETA were positive to multi-resistant bacteria, *Enterobacter cloacae complex* and *Klebsiella pneumoniae*. They produced extended-spectrum-beta-lactamase.

Risk factors of VAP

About associated-factors of VAP (Table 1), we were surprised to see that length of hospitalisation, duration of intubation and mortality were not associated with VAP, contrary to the literature(3).

The only significant differences between the two groups occurred in three parameters: the use of curares is more frequent in the VAP group (94,7% versus 68,4%; $p = .042$), age ($p = .015$) and sex ($p = .001$). The length of curarization was 11 days [4-16]. Continuous sedation is a risk factor for VAP as it increases the duration of intubation, a paediatric study of 93 patients

in 2012 also defined it as such(30). Reassessing the situation daily is recommended by many organisations(53)(54)(42)(1).The use of nursing protocols known as "Daily sedation interruption" is a reversal of usual sedation practices (55)(6) but it is not used in our PICU.

In contrast of our study, using an endotracheal tube cuff would protect against VAP thanks to a reduction in the passage of secretions in the respiratory tract(1). Genovap recommends a pressure higher than 25cmH₂O(53). Nesir *and al* noted a decrease in digestive micro-aspirations in the lungs during continuous monitoring of the balloon pressure and a reduction in the number of VAP without an increase in tracheal ischaemia(43). It is recommended in Europe to monitor the pressure at least each 24 hours (42).

We did not find proton pump inhibitors as risk factors for VAP. The SRLF (Société de réanimation en langue française) does not recommend its systematic use(54). The combination of anti-ulcer drugs and enteral nutrition would increase the risk of pneumopathy and death(56).

Length of enteral feeding was 15 [7-27] days and not associated with VAP event. In the literature, opinions are contrasted. It is recommended, in particular by the SRLF, based in particular on the meta-analysis of Doig *and al*, which shows a reduction in mortality and the incidence of VAP thanks to the early introduction of enteral nutrition(57). However, an absence of superiority and inferiority of early versus late enteral nutrition was noted in a 2017 meta-analysis by Reintam *and al*.

None of the patients with a tracheostomy had VAP (p=0,085). Five patients were tracheotomized during the mechanical ventilation. The various authors disagree on its role as a protective factor(58)(59)(60). According to Pena-Lopez *and al*, tracheotomized children are more at risk of VAP, but the effect of preventive measures has a better impact on them.

Supine body position is a risk factor of VAP, but we could not find it. A study published in "Lancet" in 1999 shows that a VAP incidence had a rate of 5% in the "semi-seated" group compared to 23% in the supine group, with a risk of 50% for patients in the supine position with enteral nutrition(61). However, difficulties in maintaining the supine body position at 45° exist(62), it must be higher than 30° to have a reduction in the number of VAP. Frequency of controls are recommended at 3 times a day(53).

Limitations

Our study presented several limitations. The main limitations of our cohort were its relatively small sample size and a low number of VAP analysed. As a result, it was not possible to undertake multivariate analysis adjusting for cofounders. In some cases, we met difficulties to perform LUS, mainly due to the presence of pleural or pericardial drain, sternotomy dressing, study of posterior zones with ECMO, ventilation with high frequency oscillation. LUS was not available in every VAP episode, depending on workload and available medical staff. For consolidations, recruitment manoeuvre, although a dynamic and important element to explore further, was not attempted

Some authors decided to exclude CAP at admission (24). According to the CDC, the CAP had a 7-day infection window period, so we chose to include 10 days after their diagnosis(45). But, LUS signs may persist 14 days after diagnosis(46). Therefore, the performance of LUS for the diagnosis of VAP may be lower in our study, but not including patients with CAP on admission would not have reflected current practice.

Therefore, substituting LUS for CXR in diagnosis of VAP needs to be explored further with larger studies.

Conclusion

In summary, LUS is an accurate lung-imaging tool to assist VAP diagnosis. The results of this study suggested that consolidations with dynamic air bronchogram were the most accurate signs for VAP diagnosis in suspected patients. Combining ultrasound signs with clinical and microbiological data provides greater accuracy. The inter-observer reproducibility of the different parameters is average and requires a longer training of the physicians. The high incidence of VAP in our population requires the implementation of VAP bundles. Multicenter studies with larger population need to be performed in order to validate a predictive VAP score including LUS in PICU.

Serment d'Hippocrate

“Au moment d’être admise à exercer la médecine, je promets et je jure d’être fidèle aux lois de l’honneur et de la probité.

Mon premier souci sera de rétablir, de préserver ou de promouvoir la santé dans tous ses éléments, physiques et mentaux, individuels et sociaux.

Je respecterai toutes les personnes, leur autonomie et leur volonté, sans aucune discrimination selon leur état ou leurs convictions. J’interviendrai pour les protéger si elles sont affaiblies, vulnérables ou menacées dans leur intégrité ou leur dignité. Même sous la contrainte, je ne ferai pas usage de mes connaissances contre les lois de l’humanité.

J’informerai les patients des décisions envisagées, de leurs raisons et de leurs conséquences. Je ne tromperai jamais leur confiance et n’exploiterai pas le pouvoir hérité des circonstances pour forcer les consciences.

Je donnerai mes soins à l’indigent et à quiconque me les demandera. Je ne me laisserai pas influencer par la soif du gain ou la recherche de la gloire.

Admise dans l’intimité des personnes, je tairai les secrets qui me seront confiés. Reçue à l’intérieur des maisons, je respecterai les secrets des foyers et ma conduite ne servira pas à corrompre les mœurs.

Je ferai tout pour soulager les souffrances. Je ne prolongerai pas abusivement les agonies. Je ne provoquerai jamais la mort délibérément.

Je préserverai l’indépendance nécessaire à l’accomplissement de ma mission. Je n’entreprendrai rien qui dépasse mes compétences. Je les entretiendrai et les perfectionnerai pour assurer au mieux les services qui me seront demandés.

J’apporterai mon aide à mes confrères ainsi qu’à leurs familles dans l’adversité.

Que les hommes et mes confrères m’accordent leur estime si je suis fidèle à mes promesses ; que je sois déshonorée et méprisée si j’y manque.”

Bibliographie

1. VAN EECKHOUDT S. CJ. PRÉVENTION DES PNEUMONIES DE VENTILATION [Internet]. Belgique. Available from: <http://www.slbo.be/wp-content/uploads/2017/10/vap-bundle-final-v3-ppt-002.pdf>
2. Raymond J, Aujard Y. Nosocomial infections in pediatric patients: a European, multicenter prospective study. European Study Group. *Infect Control Hosp Epidemiol.* 2000 Apr;21(4):260–3.
3. Aelami MH, Lotfi M, Zingg W. Ventilator-associated pneumonia in neonates, infants and children. *Antimicrob Resist Infect Control.* 2014 Sep 30;3(1):30.
4. Rosenthal VD, Jarvis WR, Jamulitrat S, Silva CPR, Ramachandran B, Dueñas L, et al. Socioeconomic impact on device-associated infections in pediatric intensive care units of 16 limited-resource countries: international Nosocomial Infection Control Consortium findings. *Pediatr Crit Care Med.* 2012 Jul;13(4):399–406.
5. Abdel-Gawad TA, El-Hodhod MA, Ibrahim HM, Michael YW. Gastroesophageal reflux in mechanically ventilated pediatric patients and its relation to ventilator-associated pneumonia. *Crit Care.* 2009;13(5):R164.
6. Hamid MH, Malik MA, Masood J, Zia A, Ahmad TM. Ventilator-associated pneumonia in children. *J Coll Physicians Surg Pak.* 2012 Mar;22(3):155–8.
7. Bigham MT, Amato R, Bondurant P, Fridriksson J, Krawczeski CD, Raake J, et al. Ventilator-Associated Pneumonia in the Pediatric Intensive Care Unit: Characterizing the Problem and Implementing a Sustainable Solution. *The Journal of Pediatrics.* 2009 Apr 1;154(4):582-587.e2.
8. Liu B, Li S-Q, Zhang S-M, Xu P, Zhang X, Zhang Y-H, et al. Risk factors of ventilator-associated pneumonia in pediatric intensive care unit: a systematic review and meta-analysis. *J Thorac Dis.* 2013 Aug;5(4):525–31.
9. Fayon MJ, Tucci M, Lacroix J, Farrell CA, Gauthier M, Lafleur L, et al. Nosocomial pneumonia and tracheitis in a pediatric intensive care unit: a prospective study. *Am J Respir Crit Care Med.* 1997 Jan;155(1):162–9.
10. Brilli RJ, Sparling KW, Lake MR, Butcher J, Myers SS, Clark MD, et al. The Business Case for Preventing Ventilator-Associated Pneumonia in Pediatric Intensive Care Unit Patients. *The Joint Commission Journal on Quality and Patient Safety.* 2008 Nov 1;34(11):629–38.
11. Srinivasan R, Asselin J, Gildengorin G, Wiener-Kronish J, Flori HR. A prospective study of ventilator-associated pneumonia in children. *Pediatrics.* 2009 Apr;123(4):1108–15.
12. Fischer JE, Ramser M, Fanconi S. Use of antibiotics in pediatric intensive care and potential savings. *Intensive Care Med.* 2000 Jul;26(7):959–66.
13. Foglia E, Meier MD, Elward A. Ventilator-Associated Pneumonia in Neonatal and Pediatric Intensive Care Unit Patients. *Clin Microbiol Rev.* 2007 Jul;20(3):409–25.
14. Iosifidis E, Pitsava G, Roilides E. Ventilator-associated pneumonia in neonates and children: a systematic analysis of diagnostic methods and prevention. *Future Microbiol.* 2018;13:1431–46.
15. Ningtiar HW, Lestari DP, Kusumastuti NP, Setyaningtyas A, Setyoningrum RA, Dharmawati I, et al. The CDC PNU-1 criteria for diagnosis of ventilator-associated pneumonia. *Paediatrica Indonesiana.* 2019 Aug 14;59(4):195–201.
16. Venkatachalam V, Hendley JO, Willson DF. The diagnostic dilemma of ventilator-associated pneumonia in critically ill children. *Pediatr Crit Care Med.* 2011 May;12(3):286–96.
17. Ait-Ali L, Andreassi MG, Foffa I, Spadoni I, Vano E, Picano E. Cumulative patient effective dose and acute radiation-induced chromosomal DNA damage in children with congenital heart disease. *Heart.* 2010 Feb;96(4):269–74.

18. Self WH, Courtney DM, McNaughton CD, Wunderink RG, Kline JA. High discordance of chest x-ray and computed tomography for detection of pulmonary opacities in ED patients: implications for diagnosing pneumonia. *Am J Emerg Med.* 2013 Feb;31(2):401–5.
19. Bouhemad B, Dransart-Rayé O, Mojoli F, Mongodi S. Lung ultrasound for diagnosis and monitoring of ventilator-associated pneumonia. *Ann Transl Med [Internet].* 2018 Nov [cited 2020 Apr 4];6(21). Available from: <https://www.ncbi.nlm.nih.gov/pmc/articles/PMC6275403/>
20. Lichtenstein DA. Échographie pleuropulmonaire. In: *Imagerie en réanimation [Internet].* Elsevier; 2007 [cited 2021 Jan 19]. p. 113–34. Available from: <https://linkinghub.elsevier.com/retrieve/pii/B9782842998219500060>
21. Wang G, Ji X, Xu Y, Xiang X. Lung ultrasound: a promising tool to monitor ventilator-associated pneumonia in critically ill patients. *Crit Care [Internet].* 2016 Oct 27 [cited 2020 Apr 4];20. Available from: <https://www.ncbi.nlm.nih.gov/pmc/articles/PMC5081926/>
22. Jones BP, Tay ET, Elikashvili I, Sanders JE, Paul AZ, Nelson BP, et al. Feasibility and Safety of Substituting Lung Ultrasonography for Chest Radiography When Diagnosing Pneumonia in Children: A Randomized Controlled Trial. *CHEST.* 2016 Jul 1;150(1):131–8.
23. Shah VP, Tunik MG, Tsung JW. Prospective evaluation of point-of-care ultrasonography for the diagnosis of pneumonia in children and young adults. *JAMA Pediatr.* 2013 Feb;167(2):119–25.
24. Staub LJ, Biscaro RRM, Maurici R. Accuracy and Applications of Lung Ultrasound to Diagnose Ventilator-Associated Pneumonia: A Systematic Review. *J Intensive Care Med.* 2018 Aug 1;33(8):447–55.
25. Tumor N, De Cunto A, Basma Y, Klein JL, Meau-Petit V. Ventilator-associated pneumonia in neonates: the role of point of care lung ultrasound. *Eur J Pediatr.* 2020 Jun 26;
26. Mongodi S, Via G, Girard M, Rouquette I, Misset B, Braschi A, et al. Lung Ultrasound for Early Diagnosis of Ventilator-Associated Pneumonia. *Chest.* 2016 Apr 1;149(4):969–80.
27. Desvergez A, Portet N, Iacobelli S, Parcevaux M, Ocquidant P, Couret D. Diagnostic échographique des pneumopathies acquises sous ventilation mécanique. *Anesthésie & Réanimation.* 2015 Sep 1;1:A57–8.
28. Pollack MM, Ruttimann UE, Getson PR. Pediatric risk of mortality (PRISM) score. *Critical Care Medicine.* 1988 Nov;16(11):1110–6.
29. Leteurtre S, Martinot A, Duhamel A, Proulx F, Grandbastien B, Cotting J, et al. Validation of the paediatric logistic organ dysfunction (PELOD) score: prospective, observational, multicentre study. *The Lancet.* 2003 Jul 19;362(9379):192–7.
30. Kalil AC, Metersky ML, Klompas M, Muscedere J, Sweeney DA, Palmer LB, et al. Management of Adults With Hospital-acquired and Ventilator-associated Pneumonia: 2016 Clinical Practice Guidelines by the Infectious Diseases Society of America and the American Thoracic Society. *Clin Infect Dis.* 2016 Sep 1;63(5):e61–111.
31. Berlet T, Etter R, Fehr T, Berger D, Sendi P, Merz TM. Sonographic patterns of lung consolidation in mechanically ventilated patients with and without ventilator-associated pneumonia: a prospective cohort study. *J Crit Care.* 2015 Apr;30(2):327–33.
32. Lichtenstein D, Mezière G, Seitz J. The dynamic air bronchogram. A lung ultrasound sign of alveolar consolidation ruling out atelectasis. *Chest.* 2009 Jun;135(6):1421–5.
33. Torres A, el-Ebiary M, Padró L, Gonzalez J, de la Bellacasa JP, Ramirez J, et al. Validation of different techniques for the diagnosis of ventilator-associated pneumonia. Comparison with immediate postmortem pulmonary biopsy. *Am J Respir Crit Care Med.* 1994 Feb;149(2 Pt 1):324–31.
34. Orso D, Ban A, Guglielmo N. Lung ultrasound in diagnosing pneumonia in childhood: a systematic review and meta-analysis. *J Ultrasound.* 2018 Sep;21(3):183–95.
35. Levinsky Y, Mimouni FB, Fisher D, Ehrlichman M. Chest radiography of acute

- paediatric lower respiratory infections: experience versus interobserver variation. *Acta Paediatr.* 2013 Jul;102(7):e310-314.
36. Goerens A, Lehnick D, Büttcher M, Daetwyler K, Fontana M, Genet P, et al. Neonatal Ventilator Associated Pneumonia: A Quality Improvement Initiative Focusing on Antimicrobial Stewardship. *Front Pediatr* [Internet]. 2018 Sep 24 [cited 2021 Jan 20];6. Available from: <https://www.ncbi.nlm.nih.gov/pmc/articles/PMC6165906/>
 37. Haliloglu M, Bilgili B, Bilginer H, Kasapoglu US, Sayan I, Aslan MS, et al. A new scoring system for early diagnosis of ventilator-associated pneumonia: LUPPIS. *Arch Med Sci.* 2020 Aug 10;16(5):1040–8.
 38. Zagli G, Cozzolino M, Terreni A, Biagioli T, Caldini AL, Peris A. Diagnosis of ventilator-associated pneumonia: a pilot, exploratory analysis of a new score based on procalcitonin and chest echography. *Chest.* 2014 Dec;146(6):1578–85.
 39. Tsou P-Y, Chen KP, Wang Y-H, Fische J, Gillon J, Lee C-C, et al. Diagnostic Accuracy of Lung Ultrasound Performed by Novice Versus Advanced Sonographers for Pneumonia in Children: A Systematic Review and Meta-analysis. *Acad Emerg Med.* 2019;26(9):1074–88.
 40. Nazerian P, Volpicelli G, Vanni S, Gigli C, Betti L, Bartolucci M, et al. Accuracy of lung ultrasound for the diagnosis of consolidations when compared to chest computed tomography. *The American Journal of Emergency Medicine.* 2015 May 1;33(5):620–5.
 41. Blackstock U, Munson J, Szyld D. Bedside ultrasound curriculum for medical students: report of a blended learning curriculum implementation and validation. *J Clin Ultrasound.* 2015 Mar;43(3):139–44.
 42. Rello J, Lode H, Cornaglia G, Masterton R, VAP Care Bundle Contributors. A European care bundle for prevention of ventilator-associated pneumonia. *Intensive Care Med.* 2010 May;36(5):773–80.
 43. Nseir S, Zerimech F, Fournier C, Lubret R, Ramon P, Durocher A, et al. Continuous control of tracheal cuff pressure and microaspiration of gastric contents in critically ill patients. *Am J Respir Crit Care Med.* 2011 Nov 1;184(9):1041–7.
 44. Patel JC, Mollitt DL, Pieper P, Tepas JJ. Nosocomial pneumonia in the pediatric trauma patient: a single center’s experience. *Crit Care Med.* 2000 Oct;28(10):3530–3.
 45. 6psevapcurrent.pdf [Internet]. [cited 2021 Jan 10]. Available from: <https://www.cdc.gov/nhsn/pdfs/pscmanual/6psevapcurrent.pdf>
 46. Caiulo VA, Gargani L, Caiulo S, Fisicaro A, Moramarco F, Latini G, et al. Lung ultrasound characteristics of community-acquired pneumonia in hospitalized children. *Pediatr Pulmonol.* 2013 Mar;48(3):280–7.
 47. Peña-López Y, Pujol M, Campins M, Lagunes L, Balcells J, Rello J. Assessing prediction accuracy for outcomes of ventilator-associated events and infections in critically ill children: a prospective cohort study. *Clin Microbiol Infect.* 2018 Jul;24(7):732–7.
 48. Cirulis MM, Hamele MT, Stockmann CR, Bennett TD, Bratton SL. Comparison of the New Adult Ventilator-Associated Event Criteria to the Centers for Disease Control and Prevention Pediatric Ventilator-Associated Pneumonia Definition (PNU2) in a Population of Pediatric Traumatic Brain Injury Patients. *Pediatr Crit Care Med.* 2016 Feb;17(2):157–64.
 49. Iosifidis E, Chochliourou E, Violaki A, Chorafa E, Psachna S, Roumpou A, et al. Evaluation of the New Centers for Disease Control and Prevention Ventilator-Associated Event Module and Criteria in Critically Ill Children in Greece. *Infect Control Hosp Epidemiol.* 2016;37(10):1162–6.
 50. Gauvin F, Dassa C, Chaïbou M, Proulx F, Farrell CA, Lacroix J. Ventilator-associated pneumonia in intubated children: comparison of different diagnostic methods. *Pediatr Crit Care Med.* 2003 Oct;4(4):437–43.
 51. Wilson. Pediatric Ventilator-Associated Events: Analysis of the Pediatric Ventilator-Associated Infection Data. 2018 Dec; Available from: <https://www.ncbi.nlm.nih.gov/pubmed/30234739>
 52. Sachdev A, Chugh K, Raghunathan V, Gupta D, Wattal C, Menon GR. Diagnosis of

- bacterial ventilator-associated pneumonia in children: reproducibility of blind bronchial sampling. *Pediatr Crit Care Med*. 2013 Jan;14(1):e1-7.
53. Valérie Nocquet Boyer. GeNoVAP Stratégie multimodale de prévention des Pneumopathies Associées à la Ventilation Mécanique (VAP) -Projet qualité SIA [Internet]. 2016. Available from: https://www.hug-ge.ch/sites/interhug/files/structures/qualite_des_soins/documents/forumqualite_genovap.pdf
54. Leone M, Bouadma L, Bouhemad B, Brissaud O, Dauter S, Gibot S, et al. Pneumonies associées aux soins de réanimation. *Anesthésie & Réanimation*. 2018 Sep;4(5):421–41.
55. Shahabi M, Yousefi H, Yazdannik AR, Alikiaii B. The effect of daily sedation interruption protocol on early incidence of ventilator-associated pneumonia among patients hospitalized in critical care units receiving mechanical ventilation. *Iran J Nurs Midwifery Res*. 2016;21(5):541–6.
56. Marik PE, Vasu T, Hirani A, Pachinburavan M. Stress ulcer prophylaxis in the new millennium: a systematic review and meta-analysis. *Crit Care Med*. 2010 Nov;38(11):2222–8.
57. Doig GS, Heighes PT, Simpson F, Sweetman EA, Davies AR. Early enteral nutrition, provided within 24 h of injury or intensive care unit admission, significantly reduces mortality in critically ill patients: a meta-analysis of randomised controlled trials. *Intensive Care Med*. 2009 Dec;35(12):2018–27.
58. Topal S, Demir E, Atakul G, Çolak M, Soydan E, Karaarslan ÜU, et al. The effect of tracheotomy on ventilator-associated pneumonia rate in children. *Int J Pediatr Otorhinolaryngol*. 2020 Jan 21;132:109898.
59. Morar P, Singh V, Jones AS, Hughes J, van Saene R. Impact of tracheotomy on colonization and infection of lower airways in children requiring long-term ventilation: a prospective observational cohort study. *Chest*. 1998 Jan;113(1):77–85.
60. Peña-López Y, Pujol M, Campins M, González-Antelo A, Rodrigo JÁ, Balcells J, et al. Implementing a care bundle approach reduces ventilator-associated pneumonia and delays ventilator-associated tracheobronchitis in children: differences according to endotracheal or tracheostomy devices. *Int J Infect Dis*. 2016 Nov;52:43–8.
61. Drakulovic MB, Torres A, Bauer TT, Nicolas JM, Nogué S, Ferrer M. Supine body position as a risk factor for nosocomial pneumonia in mechanically ventilated patients: a randomised trial. *Lancet*. 1999 Nov 27;354(9193):1851–8.
62. van Nieuwenhoven CA, Vandenbroucke-Grauls C, van Tiel FH, Joore HCA, van Schijndel RJMS, van der Tweel I, et al. Feasibility and effects of the semirecumbent position to prevent ventilator-associated pneumonia: A randomized study*. Read Online: *Critical Care Medicine | Society of Critical Care Medicine*. 2006 Feb;34(2):396–402.

[Diagnostic échographique des pneumopathies acquises sous ventilation mécanique en réanimation pédiatrique]

Résumé

Introduction : Les pneumopathies acquises sous ventilation mécanique (PAVM) sont une cause fréquente d'infection nosocomiale en réanimation pédiatrique avec majoration de la morbi-mortalité. L'échographie pulmonaire (EP) a prouvé son intérêt dans le diagnostic des pneumopathies communautaires de l'enfant et dans les PAVM de d'adulte. L'objectif de cette étude est d'évaluer les performances de l'EP dans le diagnostic des PAVM en réanimation pédiatrique (RP).

Méthode : Étude mono-centrique prospective réalisée en RP au CHU Saint Denis à La Réunion. Tout patient mineur admis en RP, ventilé depuis plus de 48 heures entre le 1^{er} Novembre 2018 et le 31 Juillet 2020 a été inclus. Une EP a été réalisée quotidiennement et a été comparée au diagnostic de PAVM par le score clinico-radiologique CDC 2018 identifié comme le gold-standard.

Résultats : Cinquante-sept patients ont été inclus avec un âge médian de 8 mois. Dix-neuf patients ont développé une PAVM et parmi eux, 9 (47%) ont eu une confirmation microbiologique. L'incidence était de 18,0 [IC 95% 10,8-28,1] PAVM /1000 jours de ventilation. Le signe le plus spécifique était le bronchogramme aérien dynamique (DAB) (94,1 [90.8-96.5] %). La précision diagnostique a été améliorée par l'association de l'EP avec la clinique : le DAB avait respectivement des valeurs prédictives positives et négatives de 80 [28.4-99.5] %, et 96 [93.1-97.9] % et les lignes B, une sensibilité et spécificité de 100 [79.4-100] % et 95.5 [92.4-97.6] %. La présence simultanée de la clinique, de la culture microbiologique et du DAB associée aux consolidations sous-pleurales avait 66,7 [9.2-99.2] % de valeur prédictive positive et 98 [95.7-99.3] % de valeur prédictive négative.

Conclusion : Le DAB est le signe échographique le plus performant pour le diagnostic des PAVM de l'enfant associé à un score clinique et à la culture microbiologique.

Disciplines : Pédiatrie, réanimation pédiatrique.

Mots-clés : Échographie pulmonaire, pneumopathies acquises sous ventilation mécanique, PAVM, réanimation pédiatrique, bronchogramme aérien dynamique.

[Lung ultrasound in diagnosis of ventilator-associated-pneumonia in pediatric intensive care unit]

Abstract

Backgrounds: Ventilator-associated-pneumonia (VAP) is a leading cause of nosocomial infections in paediatric intensive care unit (PICU) with increased morbidity and mortality, length of intubation and hospitalisation. Lung ultrasound (LUS) has been successfully applied to diagnose community-acquired-pneumonia in children and VAP in adult and neonatal population. The objective was to evaluate LUS performances in the diagnosis of VAP in a PICU.

Method: Monocentric, prospective study between November 1, 2018 and July 31, 2020 in a 12-beds PICU in Saint Denis, La Réunion were included all patients under 18 years old that were admitted to the PICU, mechanically ventilated for more than 48 hours. LUS was performed daily and compared to diagnostic of VAP by the center of disease control (CDC) 2018 score identified as the "gold-standard".

Measurements and main results: Fifty-seven patients were included. Median age was 8 [2.7-34.1] months. Nineteen (33%) children developed a VAP, among which 9 (47%) had a microbiological confirmation. The incidence of VAP was 18 (95% CI 10.8-28.1) /1000 days of ventilation. For LUS diagnosis, the most accurate sign was the dynamic air bronchogram (DAB) with 94.1 [90.8-96.5] % specificity. Accuracy was improved with the association of LUS and the clinical score: DAB had a positive and negative predictive value of 80 [28.4-99.5] %, and 96 [93.1-97.9] %, respectively, and the B-lines sensitivity and specificity were 100 [79.4-100] % and 95.5 [92.4-97.6] %. The simultaneous presence of clinical criteria of CDC, DAB, sub-pleural consolidations and microbiological confirmation allowed to achieve 66,7 [9.2-99.2] % positive predictive value and 98 [95.7-99.3] % negative predictive value.

Conclusion: DAB was the most accurate sonographic sign to diagnose VAP in suspected patients associated with clinical score and microbiology.

Discipline: Pediatrics, PICU

Keywords: Lung ultrasonography, LUS, echography, ventilated-associated-pneumonia, VAP, PICU