



HAL
open science

Could Analgesia Nociception Index (ANI) reflect a symptom other than pain in intensive care units?

Chloé Raimbert

► **To cite this version:**

Chloé Raimbert. Could Analgesia Nociception Index (ANI) reflect a symptom other than pain in intensive care units?. Human health and pathology. 2021. dumas-03446327

HAL Id: dumas-03446327

<https://dumas.ccsd.cnrs.fr/dumas-03446327>

Submitted on 24 Nov 2021

HAL is a multi-disciplinary open access archive for the deposit and dissemination of scientific research documents, whether they are published or not. The documents may come from teaching and research institutions in France or abroad, or from public or private research centers.

L'archive ouverte pluridisciplinaire **HAL**, est destinée au dépôt et à la diffusion de documents scientifiques de niveau recherche, publiés ou non, émanant des établissements d'enseignement et de recherche français ou étrangers, des laboratoires publics ou privés.



Distributed under a Creative Commons Attribution - NonCommercial - ShareAlike 4.0 International License

UNIVERSITE DE MONTPELLIER
FACULTE DE MEDECINE MONTPELLIER-NIMES

THESE

Pour obtenir le titre de
DOCTEUR EN MEDECINE

Présentée et soutenue publiquement
Par
Chloé RAIMBERT

le Lundi 20 Septembre 2021

TITRE
COULD ANALGESIA NOCICEPTION INDEX (ANI) REFLECT A SYMPTOM
OTHER THAN PAIN IN INTENSIVE CARE UNITS?

Directeur de thèse : Monsieur le Professeur Gérald CHANQUES

JURY

Président :

Monsieur le Professeur Samir JABER

Assesseurs :

Monsieur le Professeur Gérald CHANQUES

Madame la Maître de Conférence Universitaire Audrey DE
JONG

ANNEE UNIVERSITAIRE 2020 - 2021

PERSONNEL ENSEIGNANT

Professeurs Honoraires

ALBAT Bernard	BRUNEL Michel	HUMEAU Claude	MIRO Luis
ALLIEU Yves	CANAUD Bernard	JAFFIOL Claude	NAVARRO Maurice
ALRIC Robert	CHAPTAL Paul-André	JANBON Charles	NAVRATIL Henri
ARNAUD Bernard	CIURANA Albert-Jean	JANBON François	OTHONIEL Jacques
ASENCIO Gérard	CLOT Jacques	JARRY Daniel	PAGES Michel
ASTRUC Jacques	COSTA Pierre	JOURDAN Jacques	PEGURET Claude
AUSSILLOUX Charles	D'ATHIS Françoise	KLEIN Bernard	PELISSIER Jacques
AVEROUS Michel	DEMAILLE Jacques	LAFFARGUE François	PETIT Pierre
AYRAL Guy	DESCOMPS Bernard	LALLEMANT Jean Gabriel	POUGET Régis
BAILLAT Xavier	DIMEGLIO Alain	LAMARQUE Jean-Louis	PUJOL Henri
BALDET Pierre	DUBOIS Jean Bernard	LAPEYRIE Henri	RABISCHONG Pierre
BALDY-MOULINIER Michel	DUJOLS Pierre	LEROUX Jean-Louis	RAMUZ Michel
BALMES Jean-Louis	DUMAS Robert	LESBROS Daniel	REBOUL Jean
BANSARD Nicole	DUMAZER Romain	LOPEZ François Michel	RIEU Daniel
BAYLET René	ECHENNE Bernard	LORIOT Jean	ROCHEFORT Henri
BILLIARD Michel	FABRE Serge	LOUBATIERES Marie Madeleine	ROUANET DE VIGNE LAVIT Jean Pierre
BLARD Jean-Marie	FREREBEAU Philippe	MAGNAN DE BORNIER Bernard	SAINT AUBERT Bernard
BLAYAC Jean Pierre	GALIFER René Benoît	MARTY ANE Charles	SANCHO-GARNIER Hélène
BLOTMAN Francis	GODLEWSKI Guilhem	MARY Henri	SANY Jacques
BONNEL François	GRASSET Daniel	MATHIEU-DAUDE Pierre	SEGNARBIEUX François
BOURGEOIS Jean-Marie	GUILHOU Jean-Jacques	MEYNADIER Jean	SENAC Jean-Paul
BOUSQUET Jean	GUITER Pierre	MICHEL François-Bernard	SERRE Arlette
BRUEL Jean Michel	HEDON berbard	MION Charles	SOLASSOL Claude
BUREAU Jean-Paul	HERTAULT Jean	MION Henri	VIDAL Jacques
			VISIÉ Jean Pierre

Professeurs Emérites

ARTUS Jean-Claude	LE QUELLEC Alain
BLANC François	MARES Pierre
BONAFE Alain	MAUDELONDE Thierry
BOULENGER Jean-Philippe	MAURY Michèle
BOURREL Gérard	MESSNER Patrick
BRINGER Jacques	MILLAT Bertrand
CLAUSTRES Mireille	MONNIER Louis
DAURES Jean-Pierre	MOURAD Georges
DAUZAT Michel	PREFAUT Christian
DAVY Jean-Marc	PUJOL Rémy
DEDET Jean-Pierre	RIBSTEIN Jean
ELEDJAM Jean-Jacques	SCHVED Jean-François
GROLLEAU RAOUX Robert	SULTAN Charles
GUERRIER Bernard	TOUCHON Jacques
GUILLOT Bernard	UZIEL Alain
JONQUET Olivuer	VOISIN Michel
LANDAIS Paul	ZANCA Michel
LARREY Dominique	

Docteurs Emérites

PRAT Dominique
PUJOL Joseph

ANNEE UNIVERSITAIRE 2020 - 2021

PERSONNEL ENSEIGNANT

Professeurs des Universités - Praticiens Hospitaliers

PU-PH de classe exceptionnelle

ALRIC Pierre	Chirurgie vasculaire ; médecine vasculaire (option chirurgie vasculaire)
BACCINO Eric	Médecine légale et droit de la santé
BASTIEN Patrick	Parasitologie et mycologie
BEREGI Jean-Paul	Radiologie et imagerie médicale
BLAIN Hubert	Médecine interne ; gériatrie et biologie du vieillissement, médecine générale, addictologie
BOULOT Pierre	Gynécologie-obstétrique ; gynécologie médicale
CAPDEVILA Xavier	Anesthésiologie-réanimation et médecine péri-opératoire
CHAMMAS Michel	Chirurgie orthopédique et traumatologique
COLSON Pascal	Anesthésiologie-réanimation et médecine péri-opératoire
COMBE Bernard	Rhumatologie
COSTES Valérie	Anatomie et cytologie pathologiques
COTTALORDA Jérôme	Chirurgie infantile
COUBES Philippe	Neurochirurgie
COURTET Philippe	Psychiatrie d'adultes ; addictologie
CRAMPETTE Louis	Oto-rhino-laryngologie
CRISTOL Jean Paul	Biochimie et biologie moléculaire
CYTEVAL Catherine	Radiologie et imagerie médicale
DE LA COUSSAYE Jean Emmanuel	Médecine d'urgence
DE WAZIERES Benoît	Médecine interne ; gériatrie et biologie du vieillissement, médecine générale, addictologie
DELAPORTE Eric	Maladies infectieuses ; maladies tropicales
DEMOLY Pascal	Pneumologie ; addictologie
DOMERGUE Jacques	Chirurgie viscérale et digestive

DUFFAU Hugues	Neurochirurgie
ELIAOU Jean François	Immunologie
FABRE Jean Michel	Chirurgie viscérale et digestive
FRAPIER Jean-Marc	Chirurgie thoracique et cardiovasculaire
HAMAMAH Samir	Biologie et Médecine du développement et de la reproduction ; gynécologie médicale
HERISSON Christian	Médecine physique et de réadaptation
JABER Samir	Anesthésiologie-réanimation et médecine péri-opératoire
JEANDEL Claude	Médecine interne ; gériatrie et biologie du vieillissement, médecine générale, addictologie
JORGENSEN Christian	Thérapeutique ; médecine d'urgence ; addictologie
KOTZKI Pierre Olivier	Biophysique et médecine nucléaire
LABAUGE Pierre	Neurologie
LEFRANT Jean-Yves	Anesthésiologie-réanimation et médecine péri-opératoire
LEHMANN Sylvain	Biochimie et biologie moléculaire
LUMBROSO Serge	Biochimie et Biologie moléculaire
MERCIER Jacques	Physiologie
MEUNIER Laurent	Dermato-vénéréologie
MONDAIN Michel	Oto-rhino-laryngologie
MORIN Denis	Pédiatrie
PAGEAUX Georges-Philippe	Gastroentérologie ; hépatologie ; addictologie
PUJOL Pascal	Biologie cellulaire
QUERE Isabelle	Chirurgie vasculaire ; médecine vasculaire (option médecine vasculaire)
RENARD Eric	Endocrinologie, diabète et maladies métaboliques ; gynécologie médicale
REYNES Jacques	Maladies infectieuses, maladies tropicales
RIPART Jacques	Anesthésiologie-réanimation et médecine péri-opératoire
ROUANET Philippe	Cancérologie ; radiothérapie
SOTTO Albert	Maladies infectieuses ; maladies tropicales
TAOUREL Patrice	Radiologie et imagerie médicale

TOUITOU Isabelle

Génétique

VANDE PERRE Philippe

Bactériologie-virologie ; hygiène hospitalière

YCHOU Marc

Cancérologie ; radiothérapie

PU-PH de 1^{re} classe

AGUILAR MARTINEZ Patricia

Hématologie ; transfusion

ASSENAT Éric

Gastroentérologie ; hépatologie ; addictologie

AVIGNON Antoine

Nutrition

AZRIA David

Cancérologie ; radiothérapie

BAGHDADLI Amaria

Pédopsychiatrie ; addictologie

BLANC Pierre

Gastroentérologie ; hépatologie ; addictologie

BORIE Frédéric

Chirurgie viscérale et digestive

BOURDIN Arnaud

Pneumologie ; addictologie

CAMBONIE Gilles

Pédiatrie

CAMU William

Neurologie

CANOVAS François

Anatomie

CAPTIER Guillaume

Anatomie

CARTRON Guillaume

Hématologie ; transfusion

CAYLA Guillaume

Cardiologie

CHANQUES Gérald

Anesthésiologie-réanimation et médecine péri-opératoire

CORBEAU Pierre

Immunologie

COULET Bertrand

Chirurgie orthopédique et traumatologique

CUVILLON Philippe

Anesthésiologie-réanimation et médecine péri-opératoire

DADURE Christophe

Anesthésiologie-réanimation et médecine péri-opératoire

DAUVILLIERS Yves

Physiologie

DE TAYRAC Renaud

Gynécologie-obstétrique, gynécologie médicale

DE VOS John

Histologie, embryologie et cytogénétique

DEMARIA Roland	Chirurgie thoracique et cardio-vasculaire
DEREURE Olivier	Dermatologie - vénéréologie
DROUPY Stéphane	Urologie
DUCROS Anne	Neurologie
DUPEYRON Arnaud	Médecine physique et de réadaptation
FESLER Pierre	Médecine interne ; gériatrie et biologie du vieillissement, médecine générale, addictologie
GARREL Renaud	Oto-rhino-laryngologie
GENEVIEVE David	Génétique
GUILLAUME Sébastien	Psychiatrie d'adultes ; addictologie
GUIU Boris	Radiologie et imagerie médicale
HAYOT Maurice	Physiologie
HOUEDE Nadine	Cancérologie ; radiothérapie
KLOUCHE Kada	Médecine intensive-réanimation
KOENIG Michel	Génétique
KOUYOUMDJIAN Pascal	Chirurgie orthopédique et traumatologique
LAFFONT Isabelle	Médecine physique et de réadaptation
LAVABRE-BERTRAND Thierry	Histologie, embryologie et cytogénétique
LAVIGNE Jean-Philippe	Bactériologie-virologie ; hygiène hospitalière
LE MOING Vincent	Maladies infectieuses ; maladies tropicales
LECLERCQ Florence	Cardiologie
MARIANO-GOULART Denis	Biophysique et médecine nucléaire
MATECKI Stéfan	Physiologie
MORANNE Olivier	Néphrologie
MOREL Jacques	Rhumatologie
NAVARRO Francis	Chirurgie viscérale et digestive
NOCCA David	Chirurgie viscérale et digestive
PASQUIE Jean-Luc	Cardiologie

PERNEY Pascal	Médecine interne ; gériatrie et biologie du vieillissement, médecine générale, addictologie
PRUDHOMME Michel	Anatomie
PUJOL Jean Louis	Pneumologie ; addictologie
PURPER-OUAKIL Diane	Pédopsychiatrie ; addictologie
ROGER Pascal	Anatomie et cytologie pathologiques
TRAN Tu-Anh	Pédiatrie
VERNHET Héléne	Radiologie et imagerie médicale

PU-PH de 2ème classe

BOURGIER Céline	Cancérologie; radiothérapie
CANAUD Ludovic	Chirurgie vasculaire ; médecine vasculaire (option chirurgie vasculaire)
CAPDEVIELLE Delphine	Psychiatrie d'Adultes ; addictologie
CLARET Pierre-Géraud	Médecine d'urgence
COLOMBO Pierre-Emmanuel	Cancérologie ; radiothérapie
COSTALAT Vincent	Radiologie et imagerie médicale
DAIEN Vincent	Ophthalmologie
DORANDEU Anne	Médecine légale et droit de la santé
FAILLIE Jean-Luc	Pharmacologie fondamentale ; pharmacologie clinique ; addictologie
FUCHS Florent	Gynécologie-obstétrique ; gynécologie médicale
GABELLE DELOUSTAL Audrey	Neurologie
GAUJOUX Viala Cécile	Rhumatologie
GODREUIL Sylvain	Bactériologie-virologie ; hygiène hospitalière
GUILPAIN Philippe	Médecine Interne, gériatrie et biologie du vieillissement; addictologie
HERLIN Christian	Chirurgie plastique, reconstructrice et esthétique, brulologie
IMMEDIATO DAIEN Claire	Rhumatologie
JACOT William	Cancérologie ; Radiothérapie
JEZIORSKI Eric	Pédiatrie

JUNG Boris	Médecine intensive-réanimation
KALFA Nicolas	Chirurgie infantile
LACHAUD Laurence	Parasitologie et mycologie
LALLEMANT Benjamin	Oto-rhino-laryngologie
LE QUINTREC DONNETTE Moglie	Néphrologie
LETOUZEY Vincent	Gynécologie-obstétrique ; gynécologie médicale
LONJON Nicolas	Neurochirurgie
LOPEZ CASTROMAN Jorge	Psychiatrie d'Adultes ; addictologie
LUKAS Cédric	Rhumatologie
MENJOT de CHAMPFLEUR Nicolas	Radiologie et imagerie médicale
MILLET Ingrid	Radiologie et imagerie médicale
MURA Thibault	Biostatistiques, informatique médicale et technologies de la communication
NAGOT Nicolas	Biostatistiques, informatique médicale et technologies de la communication
OLIE Emilie	Psychiatrie d'adultes; addictologie
PANARO Fabrizio	Chirurgie viscérale et digestive
PARIS Françoise	Biologie et médecine du développement et de la reproduction ; gynécologie médicale
PELLESTOR Franck	Histologie, embryologie et cytogénétique
PEREZ MARTIN Antonia	Chirurgie vasculaire ; médecine vasculaire (option médecine vasculaire)
POUDEROUX Philippe	Gastroentérologie ; hépatologie ; addictologie
RIGAU Valérie	Anatomie et cytologie pathologiques
RIVIER François	Pédiatrie
ROSSI Jean François	Hématologie ; transfusion
ROUBILLE François	Cardiologie
SEBBANE Mustapha	Médecine d'urgence
SIRVENT Nicolas	Pédiatrie
SOLASSOL Jérôme	Biologie cellulaire
STOEBNER Pierre	Dermato-vénéréologie

SULTAN Ariane	Nutrition
THOUVENOT Éric	Neurologie
THURET Rodolphe	Urologie
TUAILLON Edouard	Bactériologie-virologie; hygiène hospitalière
VENAIL Frédéric	Oto-rhino-laryngologie
VILLAIN Max	Ophthalmologie
VINCENT Denis	Médecine interne ; gériatrie et biologie du vieillissement, médecine générale, addictologie
VINCENT Thierry	Immunologie
WOJTUSCISZYN Anne	Endocrinologie-diabétologie-nutrition

PROFESSEURS DES UNIVERSITES

1^{re} classe :

COLINGE Jacques (Cancérologie, Signalisation cellulaire et systèmes complexes)

LAOUDJ CHENIVESSE Dalila (Biochimie et biologie moléculaire)

VISIER Laurent (Sociologie, démographie)

PROFESSEURS DES UNIVERSITES - Médecine générale

1^{re} classe :

LAMBERT Philippe

AMOUYAL Michel

PROFESSEURS ASSOCIES - Médecine Générale

CLARY Bernard

DAVID Michel

GARCIA Marc

PROFESSEURS ASSOCIES - Médecine

BESSIS Didier (Dermato-vénérologie)

MEUNIER Isabelle (Ophtalmologie)

MULLER Laurent (Anesthésiologie-réanimation et médecine péri-opératoire)

PERRIGAULT Pierre-François (Anesthésiologie-réanimation et médecine péri-opératoire)

QUANTIN Xavier (Pneumologie)

ROUBERTIE Agathe (Pédiatrie)

VIEL Eric (Soins palliatifs et traitement de la douleur)

ANNEE UNIVERSITAIRE 2020 - 2021

PERSONNEL ENSEIGNANT

Maîtres de Conférences des Universités - Praticiens Hospitaliers

MCU-PH Hors classe - Echelon Exceptionnel

RICHARD Bruno	Médecine palliative
SEGONDY Michel	Bactériologie-virologie ; hygiène hospitalière

MCU-PH Hors classe

BADIOU Stéphanie	Biochimie et biologie moléculaire
BOULLE Nathalie	Biologie cellulaire
CACHEUX-RATABOUL Valère	Génétique
CARRIERE Christian	Bactériologie-virologie ; hygiène hospitalière
CHARACHON Sylvie	Bactériologie-virologie ; hygiène hospitalière
FABBRO-PERAY Pascale	Epidémiologie, économie de la santé et prévention
GIANSILY-BLAIZOT Muriel	Hématologie ; transfusion

MCU-PH de 1^{re} classe

BERTRAND Martin	Anatomie
BOUDOUSQ Vincent	Biophysique et médecine nucléaire
BRET Caroline	Hématologie biologique
BROUILLET Sophie	Biologie et médecine du développement et de la reproduction ; gynécologie médicale
COSSEE Mireille	Génétique
GIRARDET-BESSIS Anne	Biochimie et biologie moléculaire
LAVIGNE Géraldine	Hématologie ; transfusion
LESAGE François-Xavier	Médecine et Santé au Travail
MARTRILLE Laurent	Médecine légale et droit de la santé
MATHIEU Olivier	Pharmacologie fondamentale ; pharmacologie clinique ; addictologie

MOUZAT Kévin	Biochimie et biologie moléculaire
PANABIERES Catherine	Biologie cellulaire
RAVEL Christophe	Parasitologie et mycologie
SCHUSTER-BECK Iris	Physiologie
STERKERS Yvon	Parasitologie et mycologie
THEVENIN-RENE Céline	Immunologie
 <u>MCU-PH de 2^{ème} classe</u>	
BERGOUGNOUX Anne	Génétique
CHIRIAC Anca	Immunologie
DE JONG Audrey	Anesthésiologie-réanimation et médecine péri-opératoire
DU THANH Aurélie	Dermato-vénérologie
FITENI Frédéric	Cancérologie ; radiothérapie
GOUZI Farès	Physiologie
HERRERO Astrid	Chirurgie viscérale et digestive
HUBERLANT Stéphanie	Gynécologie-obstétrique ; Gynécologie médicale
KUSTER Nils	Biochimie et biologie moléculaire
MAKINSON Alain	Maladies infectieuses, Maladies tropicales
PANTEL Alix	Bactériologie-virologie ; hygiène hospitalière
PERS Yves-Marie	Thérapeutique; addictologie
ROUBILLE Camille	Médecine interne ; gériatrie et biologie du vieillissement ; addictologie
SZABLEWSKY	Anatomie et cytologie pathologiques

Maîtres de Conférences des Universités - Médecine Générale

MCU-MG de 1^{re} classe

COSTA David

OUDE ENGBERINK Agnès

MCU-MG de 2^{ème} classe

FOLCO-LOGNOS Béatrice

CARBONNEL François

Maîtres de Conférences associés - Médecine Générale

CAMPAGNAC Jérôme

LOPEZ Antonio

MILLION Elodie

PAVAGEAU Sylvain

REBOUL Marie-Catherine

SERAYET Philippe

ANNEE UNIVERSITAIRE 2020 - 2021

PERSONNEL ENSEIGNANT

Maitres de Conférences des Universités

Maitres de Conférences hors classe

BADIA Eric	Sciences biologiques fondamentales et cliniques
CHAZAL Nathalie	Biologie cellulaire

Maitres de Conférences de classe normale

BECAMEL Carine	Neurosciences
BERNEX Florence	Physiologie
CHAUMONT-DUBEL Séverine	Sciences du médicament et des autres produits de santé
DELABY Constance	Biochimie et biologie moléculaire
GUGLIELMI Laurence	Sciences biologiques fondamentales et cliniques
HENRY Laurent	Sciences biologiques fondamentales et cliniques
HERBET Guillaume	Neurosciences
LADRET Véronique	Mathématiques appliquées et applications des mathématiques
LAINÉ Sébastien	Sciences du Médicament et autres produits de santé
LE GALLIC Lionel	Sciences du médicament et autres produits de santé
LOZZA Catherine	Sciences physico-chimiques et technologies pharmaceutiques
MAIMOUN Laurent	Sciences physico-chimiques et ingénierie appliquée à la santé
MOREAUX Jérôme	Science biologiques, fondamentales et cliniques
MORITZ-GASSER Sylvie	Neurosciences
MOUTOT Gilles	Philosophie
PASSERIEUX Emilie	Physiologie
RAMIREZ Jean-Marie	Histologie
RAYNAUD Fabrice	Sciences du Médicament et autres produits de santé
TAULAN Magali	Biologie Cellulaire

ANNEE UNIVERSITAIRE 2020 - 2021

PERSONNEL ENSEIGNANT

Praticiens Hospitaliers Universitaires

BARATEAU Lucie	Physiologie
BASTIDE Sophie	Epidémiologie, économie de la santé et prévention
CAZAUBON Yoann	Pharmacologie fondamentale ; pharmacologie clinique ; addictologie
DAGNEAUX Louis	Chirurgie orthopédique et traumatologique
DUFLOS Claire	Biostatistiques, informatique médicale et technologies de la communication
GOULABCHAND Radjiv	Médecine interne ; gériatrie et biologie du vieillissement ; addictologie
LATTUCA Benoit	Cardiologie
MARIA Alexandre	Médecine interne ; gériatrie et biologie du vieillissement ; addictologie
MIOT Stéphanie	Médecine interne ; gériatrie et biologie du vieillissement ; addictologie
SARRABAY Guillaume	Génétique
SOUICHE François-Régis	Chirurgie viscérale et digestive

ANNEE UNIVERSITAIRE 2020 - 2021

PERSONNEL ENSEIGNANT

PH chargés d'enseignements

ABOUKRAT Patrick	BLANCHET Catherine	COROIAN Flavia-Oana	GINIES Patrick
AKKARI Mohamed	BLATIERE Véronique	COUDRAY Sarah	GRECO Frédéric
ALRIC Jérôme	BOBBIA Xavier	CRANSAC Frédéric	GUEDJ Anne Marie
AMEDRO Pascal	BOGE Gudrun	CUNTZ Danielle	GUYON Gaël
AMOUREUX Cyril	BOURRAIN Jean Luc	DARDALHON Brigitte	HENRY Vincent
ANTOINE Valéry	BOUYABRINE Hassan	DAVID Aurore	JAMMET Patrick
ARQUIZAN Caroline	BRINGER-DEUTSCH Sophie	DE BOUTRAY Marie	JEDRYKA François
ATTALIN Vincent	BRINGUIER BRANCHEREAU Sophie	DE LA TRIBONNIÈRE Xavier	JREIGE Riad
AYRIGNAC Xavier	BRISOT Dominique	DEBIEN Blaise	KINNE Mélanie
BADR Maliha	BRONER Jonathan	DELPONT Marion	LABARIAS Coralie
BAIS Céline	CADE Stéphane	DENIS Hélène	LACAMBRE Mathieu
BARBAR Saber Davide	CAIMMI Davide Paolo	DEVILLE de PERIERE Gilles	LANG Philippe
BASSET Didier	CARR Julie	DJANIKIAN Flora	LAZERGES Cyril
BATIFOL Dominique	CARTIER César	DONNADIEU-RIGOLE Hélène	LE GUILLOU Cédric
BATTISTELLA Pascal	CASPER Thierry	FAIDHERBE Jacques	LEGLISE Marie Suzanne
BAUCHET Luc	CASSINOTTO Christophe	FATTON Brigitte	LOPEZ Régis
BENEZECH Jean-Pierre	CATHALA Philippe	FAUCHERRE Vincent	LUQUIENS Amandine
BENNYS Karim	CAZABAN Michel	FILLERON Anne	MANZANERA Cyril
BERNARD Nathalie	CHARBIT Jonathan	FITENI Frédéric	MARGUERITTE Emmanuel
BERTCHANSKY Ivan	CHEVALLIER Thierry	FOURNIER Philippe	MARTIN Lucille
BIBOULET Philippe	CHEVALLIER-MICHAUD Josyane	GAILLARD Nicolas	MATTATIA Laurent
BIRON-ANDREANI Christine	COLIN Olivier	GALMICHE Sophie	MEROUEH Fadi
BLANC Brigitte	CONSEIL Mathieu	GENY Christian	MEYER Pierre
BLANCHARD Sylvie	CORBEAU Catherine	GERONIMI Laetitia	MILESI Christophe

MORAU Estelle	SEGURET Fabienne
MOSER Camille	SENESSE Pierre
MOUSTY Eve	SKALLI El Medhi
MOUTERDE Gaël	SOLA Christelle
PANSARD Nicole	SOULLIER Camille
PERNIN Vincent	STOEBNER DELBARRE Anne
PERRIGAULT Pierre François	TEOT Luc
PEYRON Pierre-Antoine	THIRION Marina
PICARD Eric	VACHIERY-LAHAYE Florence
PICOT Marie Christine	VERNES Eric
PIERONI Laurence	VINCENT Laure
POQUET Héléne	WAGNER Laurent
PUJOL Sarah-Lise	ZERKOWSKI Laetitia
PUPIER Florence	
QUANTIN Xavier	
RAFFARD Laurence	
RAPIDO Francesca	
RIBRAULT Alice	
RICHAUD-MOREL Brigitte	
RIDOLFO Jérôme	
RIPART Sylvie	
RONGIERES Michel	
ROULET Agnès	
RUBENOVITCH Josh	
SANTONI Fannie	
SASSO Milène	
SCHULDINER Sophie	

REMERCIEMENTS

Aux membres du Jury,

Au président du jury, le Professeur Samir JABER

Merci de me faire l'honneur de présider mon jury pour ce jour important et de m'accueillir dans votre service pendant mes 2 ans d'assistantat.

A mon directeur de thèse, le Professeur Gérald CHANQUES,

Merci de nous avoir guidé Lili et moi dans ce travail et d'avoir partagé votre passion pour le bien être des patients, pour la recherche et surtout l'art. Ce fut un honneur de travailler avec vous sur ce projet.

Au Docteur Audrey DE JONG,

Merci de faire partie de mon jury de thèse, de m'avoir tant appris et transmis ta joie de vivre.

Aux personnes qui ont contribué à la réalisation de cette thèse,

A Océane GARNIER,

Merci de t'être autant investi sur notre projet. C'est une très belle rencontre sur le plan professionnel et amical.

Au Professeur Nicolas MOLINARI et Mme Sandrine AKOUETE,

Merci pour votre aide très précieuse pour les statistiques de cette thèse.

A Lili, mon duo de choc pour cette thèse,

Merci d'avoir réalisé ce travail avec moi, d'avoir toujours été au rendez-vous avec le sourire que ce soit pour travailler ou autour d'un verre avec Océane, nous formons une sacrée équipe.

A ceux qui ont participé à ma formation,

Merci à tous les anesthésies réanimateurs ou autres spécialités qui ont pris le temps de me former pendant ces quatre années. Il est impossible de tous vous citer, mais bravo

à l'équipe du CHU de Montpellier et de Nîmes de nous offrir une si bonne formation pendant notre internat.

Merci à tous mes Co-internes d'anesthésie réanimation de la promo 2017, Chloé la blonde, Yaya, Lulu, Eve, Adri, PB, Toto, Flo, Marine, Ambre, Cléa, Dim, Ben, Hugo, Joris, Pauline, Nicolas, Thomas, Boris, principalement pour avoir partagé la meilleure SFAR de tous les temps dans l'aquarium de Paris.

Et ceux que j'ai rencontré à travers les stages : Chachou, Popo, Caillaboux, Geo, Bourdon, Thomas, Cyp, Ludo, Rimka...

A ceux qui m'ont supporté depuis de nombreuses années maintenant,

Merci à ma famille, à mes parents, à ma sœur et mes grands-parents, Mumu et Domi, Vero et Jean Yves de m'avoir soutenue et poussée pour que je puisse en arriver là aujourd'hui, et de traverser la France pour pouvoir être là à mes côtés pour ce jour important.

Merci à mes copines de Poitiers, Amandine, Clémentine, Lucie et Marilou, ma team de gonz avec qui j'ai tout partagé depuis 10 ans, les meilleurs et les pires moments, les rires et les pleurs, qui habitent au 4 coins de la France (presque du monde selon les mois) et qui arrivent toujours à être présentes, comme aujourd'hui. Merci pour tout.

Merci à Lulu et Thomas, mes jeunes mariés pref' en lune de miel pour ma thèse.

A mes copines rencontrées à Montpellier, Chach ma nouvelle voisine, Chlo la blonde avec qui je ne fais plus qu'un en stage et Manax que j'ai redécouverte ici, et maintenant la queen J, merci pour tous les souvenirs, les virées shoppings et les soirées gonz.

A toute notre team, Chach, Chlo, Manax, Clem, Cons, Jéjé, Melik, Maxou, Richie, Yaya et toute la team de Toulouse, merci pour tous ces week-end de retrouvailles, de festivals et de villa seventies (et de rando...).

A Clément, mon Clem (le meilleur pour la fin), merci de me supporter depuis 7 ans et de me rendre heureuse.

INTRODUCTION

Over the last decades, great efforts have been made to better manage comfort and welfare in critically-ill patients (1).

Suffering and psychological disorders are linked to admissions in intensive care units (ICU) (2–5). Reasons are multiple: anxiety-inducing environment and pathologies, painful procedure of care (6), absence of a day-night cycle, noises, light ... These disorders may be associated with short and long-term repercussions in our patients (7). Primarily neuro-psychological disorders include nightmares, reviviscence, and also a real post-traumatic stress syndrome, that will delay the return to social and professional normal life (8).

The development of new strategies to promote comfort while improving cognitive abilities are topical (9). Current guidelines recommend reducing the depth and duration of deep sedation, in order to screen and manage cognitive dysfunction (10). To achieve this double goal (promoting comfort in one hand while avoiding deep sedation in the other hand), research efforts are recommended to develop non-pharmacological analgesic and relaxing techniques that are, by nature, not associated with drug adverse events, especially delirium (10). Several studies have already shown the benefit of using non-pharmacological techniques in intensive care, such as hypnosis (11), music therapy (12,13), massage, cold therapy and relaxation techniques.

Recommended assessment of patient's stressful symptoms is currently based on clinical tools (10). Such tools remain subjective by nature, depending on nurses' education and training, and/or the patient's ability to use tools (14,15). To deal with these issues, several electrophysiological tools have been developed to measure the stress response related to pain in patients unable to report their suffering, for example, in patients who are deeply anesthetized in the operating room, or sedated in the ICU. One of the most studied electrophysiological tools is the Analgesia Nociception Index (ANI). ANI is a mathematical assessment of Heart Rate Variability (HRV), derived from the patient's Electro-Cardio-Graphic (ECG) monitoring. HRV is a physiological response induced by the breathing cycles, driven by the parasympathetic tone and thus, linked to the parasympathetic/sympathetic balance.

ANI provides a number from 0 to 100 through spectral analysis, which is an estimation of the balance between parasympathetic and sympathetic outflows: 100 indicates a high parasympathetic modulation (low stress level = low risk of pain), while 0 indicates an extremely low parasympathetic modulation (high stress level = high risk of pain) (16,17). ANI has shown promising results in patients under general anesthesia during surgery (18), just after surgery in the recovery room (19), as well as in the ICU setting (6,16,20).

However, ANI might not be specific of pain but could rather be a marker of the adrenergic response, as reported in a study enrolling healthy volunteers undergoing non painful but fearful procedures (21). Consequently, it remains interesting to study whether ANI may be more specific to another component of stress and suffering than pain, such as general discomfort, anxiety, dyspnea, lack of rest, or thirst, among the most frequently stressful symptoms reported by patients hospitalized in ICU (22).

The present study is an ancillary, exploratory study of an interventional study designed to evaluate the benefit of different relaxation methods in ICU patients who self-reported their intensity of different stressful symptoms before and after the relaxation sessions, and for who ANI was also continuously monitored. The hypothesis of this ancillary exploratory study was that ANI could be influenced by suffering symptoms other than pain in ICU patients. The primary endpoint was to measure the correlation between ANI and the intensity of overall discomfort and of the five most frequently reported stressful symptoms in ICU: pain, anxiety, dyspnea, thirst and lack of rest. Secondary endpoints were to measure the correlation between the variation of ANI and the variation of each symptom, and to measure the statistical performance of ANI to detect any symptom of at least moderate intensity.

MATERIALS AND METHODS

Ethics approval

The primary study is an interventional randomized cross-over trial aimed at measuring the effect of several relaxation techniques on ICU patients' suffering symptoms. It was approved by an ethics committee [*Comité de Protection des Personnes Sud-Méditerranée-1* (ID-RCB:2016-A00748-43)] according to French law (23), and registered on Clinical Trials NCT04017299.

Patient population

This trial took place in the medical-surgical ICU of the University Hospital of Saint Eloi, Montpellier, France, from July 2019 to December 2019.

All consecutive patients over 18-years admitted to the ICU were eligible if they were non delirious (rated as negative following the Confusion Assessment Method (CAM) for the ICU (24,25), alert according to the Richmond Agitation Sedation Scale (RASS) ≥ 0 (26–28), and with current organ dysfunctions defined by a Sequential Organ Failure Assessment (SOFA) score ≥ 3 (29).

The exclusion criteria were: patient transferred from another ICU, dying patients, patients needing hygiene precautions limiting the access to the headset, patients undergoing psychotic treatment or with previous cognitive impairment, patients hospitalized for brain injury, and according to French law (23): pregnant or breastfeeding women, patients under tutelage or curatorship, patients not registered with the national social security system, or who refused to participate.

Conduct of the primary interventional study and description of the multimedia relaxation tools

Patients were screened daily for eligibility by investigators, and included in the study after written consent. Patients underwent four relaxation sessions consecutively, after randomization of the session order using a cross over design. The randomization was made by the statistic department, and provided via envelopes available for the ICU investigators. The four relaxation sessions are described as follows:

- STANDARD: a relaxation and distraction period of 15 minutes during which a standard usual distraction was chosen by the patient (e.g. television, radio, books...). The bedroom's door was kept closed, and any nursing and medical procedures were prevented during the session.
- MUSIC CARE© (Paris, France): a 15 minutes relaxation session of psychomusical intervention (music therapy) using the MUSIC CARE© device, consisting of U-shaped music score provided through a high-quality audio headset, the style of music being chosen by the patient from the range offered by the software.

- DEEPCEN® VR system (Saint-Didier-au-Mont-d'Or, France): a 15 minutes relaxation session of Virtual Reality (VR), immersing the patient into a series of filmed sequences, using an "all-in-one" headset created by the company. The patient is able to choose the film among four kinds of videos (Norway, mountain countryside, India and Camargue, a quiet seaside in South of France, near Montpellier) using real motion picture, two types of voice (male and female).
- HEALTHY MIND® VR system (Paris, France): a 15 minutes relaxation session of VR, immersing the patient into an artificial world created from computer-generated images using a software linked to the Oculus Rift® helmet and a headset. The patient is able to choose four kinds of environments (beach, mountain, snow and Japan) using synthetic motion pictures, breathing exercises and advanced psychological/relaxation principles such as cardiac coherence.

Data handling

After enrollment in the study, a relaxation technique was proposed to the patient at the time of the day that she or he prefers. At baseline, before starting the session, the following vital parameters were recorded from the patient's bedside monitoring: heart rate, blood pressure, respiratory rate and ANI. Only instant-ANI was recorded because it had previously been reported that instant-ANI was more accurate than mean-ANI in ICU patients (20). Then, the patient was asked to report her or his symptoms' intensity using a large visual Numeric Rating Scale (NRS) ranging from 0 to 10 (0 = no discomfort at all; 10 = the most uncomfortable possible symptom) (30). Overall discomfort as well as the five current stressful symptoms were assessed: pain, anxiety, thirst, dyspnea and lack of rest. All parameters were recorded again just after the end of each relaxation session.

Statistical analysis (ancillary study)

1) Study hypothesis

The hypothesis of the present ancillary exploratory study, derived from the primary interventional trial, was that ANI could be influenced by suffering symptoms other than pain in ICU patients. All measurements performed before and after all relaxation sessions were taken into account for the exploratory analysis.

2) Primary endpoint: correlation between ANI and NRS for each of the 6 stressful symptoms reported by the patients (overall discomfort, pain, anxiety, thirst, dyspnea and lack of rest). The non-parametric Spearman's correlation coefficient was calculated to measure the correlation between ANI and NRS. To test the hypothesis of the study, correlation coefficients were compared between each other for each of the 6 symptoms, following the method by Hotelling - William (31).

3) Secondary endpoints:

- correlation between ANI's variation and NRS' variation (Spearman's coefficient).
- ANI's statistical performance to detect a stressful symptom of at least moderate intensity: Receiving Operator Characteristics (ROC) curves were constructed based on the definition of a moderate to severe stressful symptom as a NRS ≥ 4 , based on previous studies on pain in ICU patients (30,32) and experts' opinion regarding the management of stressful symptoms in ICU patients (22).

4) Number of patients needed to be enrolled

The number of patients needed to be enrolled was n=60 in the primary interventional trial. As the present ancillary study was exploratory, all patients who were enrolled in the primary study were taken into account for analysis.

5) Presentation of data

Quantitative data are shown as medians and 25th-75th percentiles. For descriptive data regarding the impact of relaxation session on ANI and NRS, the difference between the median value recorded before and after each kind of relaxation session was tested by the Student's t test or the Wilcoxon's U test depending on the distribution of the variable. For all statistical tests, a p value of 0.05 was considered statistically significant. Data were analyzed by independent statisticians using the SAS Enterprise Guide version 9.4 (SAS Institute, Cary, NC).

RESULTS

1) Description of the population

Among the 277 patients admitted to the ICU during the study period, 237 were eligible and 60 were enrolled in the primary trial. **Figure 1** shows the study flow chart. Patients' demographic and medical characteristics were summarized in **Table 1**. The median age was 62 [51-69], and there were a majority of men (67%). The main reasons of admission were liver transplantation (30 %) and other abdominal and or thoracic surgical interventions (28%), respiratory failure (10%), hemorrhagic shock (8%) and septic shock (7%). The median Simplify Acute Physiological Score II (SAPS II) score was 36 [13-82]. Seventy five percent of patient were treated with analgesics, and twenty seven percent with anxiolytics.

During the study, patients were assessed up to eight times, i.e. before and after each of the 4 relaxation sessions: Standard relaxation, Music Care©, Healthy Mind® VR, and DeepSen® VR, accounting for up to 428 assessments of patient's symptoms (**Fig 1**). The number of evaluations is lower after relaxation sessions because of a few cases of early relaxation interruptions. ANI recording could be obtained in 406/428 (95%) assessments. **Table 2** shows the measurement of symptom's intensity (NRS), ANI and other vital parameters, according to the type of relaxation session.

Briefly, ANI was significantly higher after music therapy and virtual reality (suggesting a lower physiological stress after these relaxation sessions), while suffering from lack of rest was significantly lower. Anxiety was significantly lower after virtual reality, and overall discomfort was significantly lower after Healthy Mind® VR only (univariate analysis).

2) Correlation between ANI and the intensity of Overall discomfort, Pain, Anxiety, Thirst, Dyspnea and Lack of rest (primary endpoint).

The correlation between ANI and NRS for each of the 6 symptoms studied (all sessions combined) is shown in **Table 3**. The correlation with ANI was low or very low for each symptom (Spearman's r between -0,01 and -0,13) but statistically significant for overall discomfort ($r = -0,13$; $p = 0,007$), pain ($r = -0,13$; $p = 0,006$), anxiety ($r = -0,12$; $p = 0,02$), and lack of rest ($r = -0,11$; $p = 0,03$).

There was a statistically significant difference between the correlation for pain and the correlation for thirst ($p= 0.007$), and for dyspnea ($p= 0.02$). There was no significant difference between the correlation for pain and the correlation for overall discomfort ($p= 0.97$), anxiety ($p= 0.75$), and suffering from lack of rest ($p= 0.67$).

3) Correlation between the variation of ANI, and the variation of the intensity of Overall discomfort, Pain, Anxiety, Thirst, Dyspnea and Lack of rest after relaxation (secondary endpoint).

The correlation between ANI variation and the variation of each symptom was between 0,02 and -0,25, statistically significant for overall discomfort ($r= - 0,25$; $p= 0,0004$) and lack of rest ($r= -0,14$; $p = 0,05$). These results are shown in **Table 3**.

4) ANI performance to detect a stressful symptom (secondary endpoint)

The ROC curves (**Fig 2**) constructed to report the ANI's performance to detect a stressful symptom as defined by a $NRS \geq 4$ was close to the central line with Areas Under the Curve (AUC) ranging from 0,58 (95% CI : 0,53 to 0,64) for overall discomfort to 0,50 (95%CI : 0,44 to 0,56) for dyspnea.

DISCUSSION

The main result of this study is that ANI is statistically significantly correlated with pain but also with diverse stressful symptoms reported by ICU patients: overall discomfort, anxiety and lack of rest. The highest correlation was measured with pain, and this correlation was statistically significantly different from the correlation with dyspnea and thirst. However, the correlation with pain was not significantly different from the correlation with overall discomfort, anxiety and lack of rest.

ANI is probably able to measure the general physiological response of stress which is by nature not only specific of pain. ANI was used principally in intensive care and in perioperative anesthesia to evaluate pain, it has never been studied for the management of another symptom. This study is the first one, that evaluated if ANI could be a marker of other symptoms than pain in the ICU setting.

In non medical setting, ANI was assessed in 20 healthy volunteers, reporting a significant decrease in ANI values (suggesting a significant higher physiological stress response), after nociceptive stimuli including a placebo stimulation or even the information of the stimulation alone without any effective stimulation (21). This suggests that even the only impact of fear could modify the ANI. In the same way, Heart Rate Variation (HRV) technology was used to assess the stress response developed by acute care physicians during simulated training of critical intubations (33). HRV was also studied in the context of depression and anxiety in young peoples and found lower HRV in this case compared to control (34). In all, the present study suggests that when ANI reports a low value in ICU patients, any source of discomfort or suffering should be considered, and not only pain, contrary to what ANI is used for usually today in ICU and perioperative anesthesia care. It is paramount to understand that the name of the technology (“Analgesia and Nociception” Index) would make a confusion regarding its use for pain management only, while ANI is rather a marker of general stress response. Similar results have been found in a pediatric study, where HRV was well correlated with two clinical scoring system evaluating postoperative discomfort and pain (35) .

In our study, the correlation coefficients between ANI and the 6 symptoms were low. Similar results have been found in a previous study (20) measuring the correlation between ANI and the Behavioral Pains Scale (BPS). In that study (20), the validity of ANI to measure pain during painful care procedures was demonstrated by discriminant validation method (i.e. significant changes of ANI were demonstrated before and after nociceptive stimulation) (36). This suggests that the correlation between ANI and symptom measurement is not the best appropriate method to assess the validity of ANI. In the present study, ANI changed also significantly before and after relaxation, along with changes in the intensity of stressful symptoms reported by the patients. Even if the correlation between ANI and the symptoms is not the best appropriate method to assess the validity of ANI, it was chosen in the present study in order to compare the association between ANI and each symptom, with an exploratory objective. It should be also note that the ROC curves reported also a low performance of ANI to detect significant stressful symptoms including pain in the present study, contrary to a previous study (37).

This could be explained by the fact that in the original studies performed to measure the association of ANI with pain, the stimulations that were used were much more nociceptive, and variations were therefore much more marked than in the present study. The median NRS before relaxation was less than 4 meaning that patients suffered from light to moderate pain only. Median ANI values were between 62 and 77 before relaxation suggesting that patients had light or moderate physiological stress, as values above 43 are usually reported in the literature to be not associated with suffering (37).

There are several strengths and limitations in the present study. Strengths include the prospective recording of parameters by a research team dedicated to the primary trial. Parameters were chosen based on validation studies (22,27,37,38), international guidelines (26,38) or experts' opinion (22,39). Assessed symptoms were chosen because they were the stressful symptoms the most frequently reported by ICU patients (22). The exploratory analysis of the impact of a symptom on ANI was performed by independent senior statistical methodologists. Finally, this exploratory analysis is the first study investigating the link between ANI and diverse stressful symptoms other than pain in ICU patients.

Regarding the study limits, first, the correlation between ANI and symptoms, including pain, as well as the ROC curves, were small, more than previously reported in studies investigating pain specifically. The primary study was not designed to validate the capability of ANI to assess these symptoms, but as a surrogate and objective marker of the physiological stress response associated with patient's suffering and diverse relaxation techniques. Also, the present study could not assess all factors impacting on ANI for the same reason than the primary study was not calibrated for this endpoint. Finally, if the paramedical or medical team were asked not to enter the room during the relaxation sessions and to prevent monitor's alarms, so that the patients could take full advantage of the relaxation, this was done as far as possible but impossible to realize in 100% of sessions because of the critical nature of patients' illness. ANI values could be impacted by stressful stimulations that were not reported by the measurement of selected symptoms.

CONCLUSION

This ancillary exploratory study suggests that Analgesia Nociception Index (ANI) is not only an electrophysiological assessment of pain as its name would suggest. ANI is probably more a surrogate marker of overall discomfort and other stressful symptoms, especially anxiety and lack of rest. Discomfort is a parameter that is humanely fundamental to take into account in the overall management of critically ill patients, but it is difficult to analyze objectively, as the present study reports low to very low correlation between ANI and symptoms. However, ANI is a tool that can help managing patient's overall suffering, especially patients unable to communicate. The present study suggests than all sources of stress and suffering should be considered when ANI is used in ICU, and not only pain.

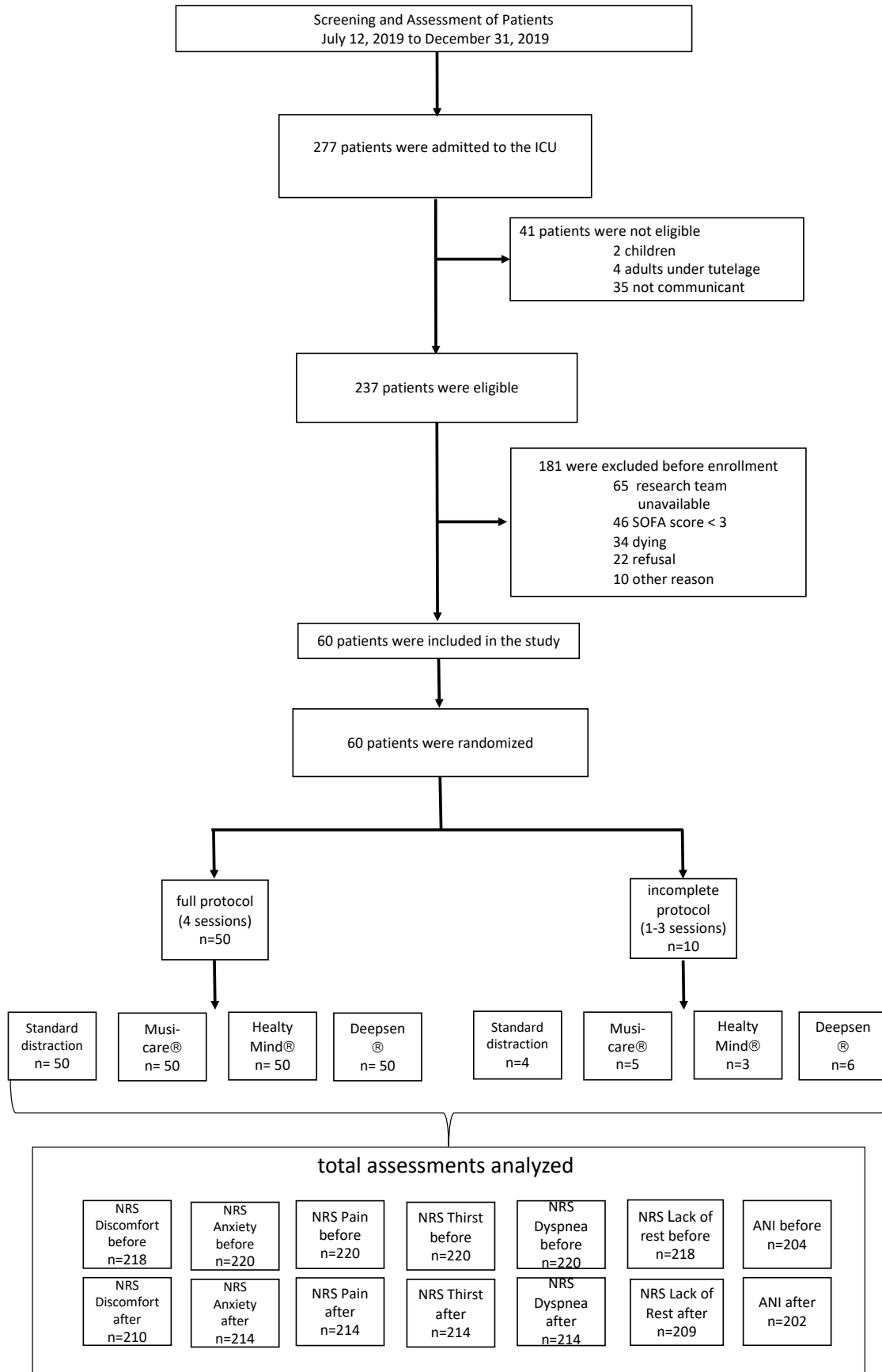


Fig 1 Study Flow Chart.
N are different in total assessments analyzed because of incomplete sessions

Table 1 - Demographic and medicals characteristics

Medical history and characteristics upon admission to ICU	
Age (yr)	62 [51-69]
Sex (F/M)	20/40
BMI (kg.m ⁻²)	27 [22-30]
SAPS II score	36 [28-44]
SOFA score	6 [4-8]
Reason for admission to the ICU	
<i>Liver transplant, n(%)</i>	18 (30%)
<i>Post operative, n(%)</i>	17 (28%)
<i>ARDS, n (%)</i>	6 (10%)
<i>Hemorrhagic choc, n(%)</i>	5 (8%)
<i>Septic choc, n(%)</i>	4 (7%)
<i>Others, n(%)</i>	10 (17%)
Characteristics upon enrolment into the study	
RASS level	0 [0-0]
CAM-ICU negative, n(%)	60 (100%)
Length of stay in ICU before enrolment (days)	2,7 [1,1-3,6]
Invasive mechanical ventilation before enrolment, n(%)	36 (60%)
<i>Time between extubation and enrolment (hours)</i>	25 [14-42]
Sedation before enrolment, n(%)	36 (60%)
Number of catheters	4 [2-5]
Medical characteristics of patients on the first relaxation session	
<i>Mecanical ventilation, n(%)</i>	1 (2%)
<i>Non invasive ventilation, n(%)</i>	2 (3%)
<i>Hight flow nasal oxygen therapy, n(%)</i>	18 (30%)
<i>Dialysis, n(%)</i>	2 (3%)
<i>Vasopressors, n(%)</i>	7 (12%)
Sedation at enrollment, n(%)	0 (0%)
Analgesic administration at enrollment, n(%)	45 (75%)
<i>Acetaminophen, n(%)</i>	19 (32%)
<i>Nefopam, n(%)</i>	38 (63%)
<i>Tramadol, n(%)</i>	32 (53%)
<i>Opioid, n(%)</i>	2 (3%)
<i>Peridural analgesia, n(%)</i>	3 (5%)
Anxiolytic administration at enrollment, n(%)	16 (27%)

Table 1 Patient and medical characteristics of the 60 patients included for analysis. Continuous data are expressed in median [25th-75th percentiles].

BMI: Body Mass Index; SAPS II: simplified acute physiology score II; SOFA: Sequential Organ Failure Assessment score; RASS: Richmond Agitation-Sedation Scale; CAM-ICU: Confusion Assessment Method for the ICU; ARDS: Acute Respiratory distress syndrome

Table 2

Symptoms and vital parameters depending on the type of distractions

Symptoms		Type of relaxative techniques			
		STANDARD	MUSIC CARE®	VR DEEPPSEN®	VR HEALTY MIND®
NRS Overall Discomfort	BEFORE	4 [2;6]	4 [2;6]	5 [2;6]	4 [2;6]
	AFTER	4 [2;5]	2,5 [1;5]	4 [1,5;5]	2 [0;5]
	p	0,27	0,06	0,21	0,02
NRS Pain	BEFORE	2 [0;5]	2 [0;5]	3 [0;5]	2,5 [0;5]
	AFTER	2 [0;5]	1 [0;5]	2 [0;4]	1 [0;4]
	p	0,7	0,45	0,3	0,12
NRS Anxiety	BEFORE	2,5 [0;5]	3 [0;5]	3 [0;5]	3 [0;5]
	AFTER	2 [0;4]	2 [0;5]	1 [0;4]	1,7 [0;4]
	p	0,52	0,32	0,03	0,05
NRS Thirst	BEFORE	6 [1;9]	6 [1;8]	5 [1;8]	4 [0;7]
	AFTER	6 [0;8]	5 [1;8]	4 [0;8]	4 [0;6]
	p	0,68	0,53	0,38	0,93
NRS Dyspnea	BEFORE	1,5 [0;5]	2 [0;5,5]	2 [0;5]	2 [0;4]
	AFTER	1 [0;4]	1 [0;4]	2 [0;5]	0,5 [0;4]
	p	0,89	0,13	0,44	0,5
NRS Lack of rest	BEFORE	4 [2;6]	5 [2;7]	5 [3;8]	5 [3;8]
	AFTER	4 [1;6]	4 [0;5]	2 [1;5]	3,5 [2;5]
	p	0,49	0,05	< 0,01	0,02
Vital parameters					
ANI	BEFORE	62 [48;85]	66 [56;82]	72 [53;80]	67 [51;80]
	AFTER	69 [51;82]	82 [65;93]	80 [70;98]	91 [70;98]
	p	0,45	< 0,01	< 0,01	< 0,01
Heart Rate (/min)	BEFORE	89 [81;102]	88 [80;102]	87 [78;99]	88 [77;100]
	AFTER	92 [79;102]	85 [81;101]	84 [74;98]	92 [80;97]
	p	0,88	0,68	0,51	0,69
Respiratory Rate (/min)	BEFORE	21 [18;24]	20 [17;26]	20 [17;25]	21 [16;27]
	AFTER	22 [18;27]	19 [15;24]	21 [17;26]	20 [16;24]
	p	0,74	0,34	0,81	0,14
Systolic blood Pressure (mmHg)	BEFORE	134 [120;144]	128 [117;154]	136 [121;151]	134 [118;146]
	AFTER	133 [119;146]	127 [113;143]	137 [120;151]	131 [115;148]
	p	0,99	0,51	0,86	0,82
Diastolic Blood Pressure (mmHg)	BEFORE	72 [65;82]	71 [62;82]	70 [62;81]	73 [65;82]
	AFTER	72 [64;79]	66 [61;77]	75 [61;84]	71 [62;81]
	p	0,52	0,18	0,38	0,65

Table 2 The values correspond to a rating from 1 to 10 on a numerical scale, were 0 is the best and 10 the worst intensity, and are expressed in median [25th-75th percentiles]. The p value was calculated via Mann Whitney test for non-parametric values and via Student test for parametric values.

Table 3

Correlation ANI - NRS of Overall Discomfort, Pain, Anxiety, Thirst, Dyspnea and Lack of Rest						
	ANI/NRS Overall Discomfort	ANI/ NRS Pain	ANI/ NRS Anxiety	ANI/ NRS Thirst	ANI /NRS Dyspnea	ANI / NRS Lack of Rest
Correlation between ANI (before/after) and NRS (before/after) on all sessions						
Nb	398	404	404	404	404	397
r = Spearman's Correlation Coefficient	-0,13	-0,13	-0,12	0,07	-0,01	-0,11
p	0,007	0,006	0,02	0,13	0,78	0,03
Correlation between ANIi variation and NRS variation on all sessions						
Nb	193	198	198	198	198	191
r = Spearman's Correlation Coefficient	-0,25	-0,11	-0,06	0,02	-0,09	-0,14
p	0,0004	0,13	0,43	0,74	0,18	0,05
Correlation between ANI variation and NRS variation with Healthy Mind VR						
Nb	51	52	52	52	52	52
r = Spearman's Correlation Coefficient	-0,31	0,07	-0,13	-0,05	-0,06	-0,11
p	0,02	0,59	0,33	0,7	0,67	0,42

ANI: Analgesia Nociception Index ; NRS: Numerating Rate Scale; VR: Virtual Reality

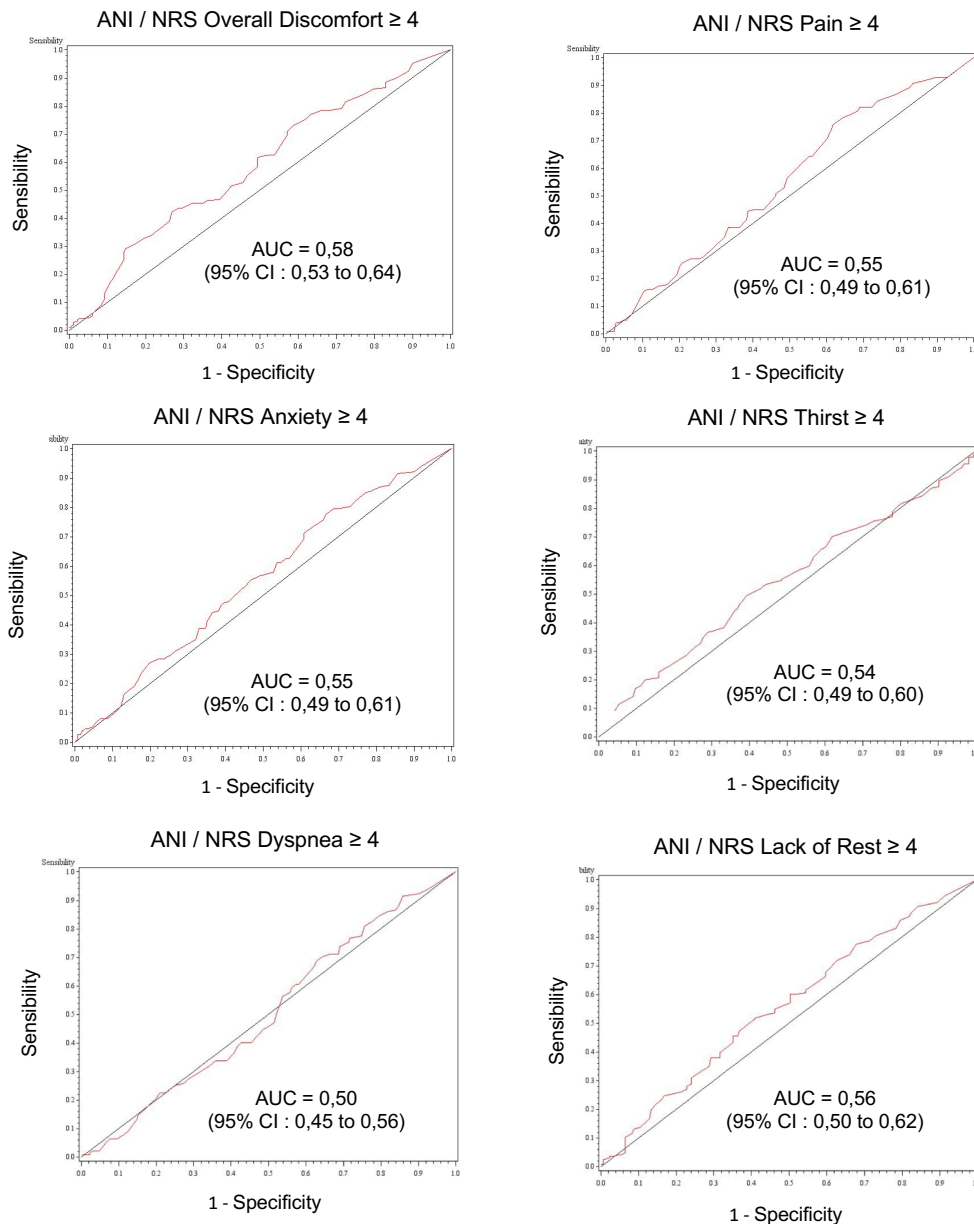


Fig 2 Receiver Operating Characteristics (ROC) curves for ANI associated with Overall Discomfort, Pain, Anxiety, Thirst, Dyspnea and Lack of Rest defined by a NRS ≥ 4 . ANI, Analgesia Nociception Index; NRS, Numerating Rate Scale; AUC, Area under the Curve

REFERENCES

1. Chanques G, Drouot X, Payen J-F. 2008-2018: Ten years of gradual changes in the sedation guidelines for critically ill patients. *Anaesth Crit Care Pain Med.* déc 2018;37(6):509-11.
2. Wade DM, Howell DC, Weinman JA, Hardy RJ, Mythen MG, Brewin CR, et al. Investigating risk factors for psychological morbidity three months after intensive care: a prospective cohort study. *Crit Care Lond Engl.* 15 oct 2012;16(5):R192.
3. Jones C, Griffiths RD, Humphris G. Disturbed memory and amnesia related to intensive care. *Mem Hove Engl. mars 2000;8(2):79-94.*
4. Hatch R, Young D, Barber V, Griffiths J, Harrison DA, Watkinson P. Anxiety, Depression and Post Traumatic Stress Disorder after critical illness: a UK-wide prospective cohort study. *Crit Care.* 23 nov 2018
5. Puntillo KA, Max A, Timsit J-F, Vignoud L, Chanques G, Robleda G, et al. Determinants of Procedural Pain Intensity in the Intensive Care Unit. The European® Study. *Am J Respir Crit Care Med.* 21 nov 2013;189(1):39-47.
6. Chanques G, Delay J-M, Garnier O, Berra J, Prades A, Carr J, et al. Is there a single non-painful procedure in the intensive care unit? It depends! *Intensive Care Med.* avr 2018;44(4):528-30.
7. Puntillo KA, Max A, Chaize M, Chanques G, Azoulay E. Patient Recollection of ICU Procedural Pain and Post ICU Burden: The Memory Study*. *Crit Care Med.* nov 2016;44(11):1988-95.
8. Needham DM, Davidson J, Cohen H, Hopkins RO, Weinert C, Wunsch H, et al. Improving long-term outcomes after discharge from intensive care unit: report from a stakeholders' conference. *Crit Care Med.* févr 2012;40(2):502-9.
9. Jensen JF, Thomsen T, Overgaard D, Bestle MH, Christensen D, Egerod I. Impact of follow-up consultations for ICU survivors on post-ICU syndrome: a systematic review and meta-analysis. *Intensive Care Med.* may 2015;41(5):763-75.
10. Devlin JW, Skrobik Y, Gélinas C, Needham DM, Slooter AJC, Pandharipande PP, et al. Clinical Practice Guidelines for the Prevention and Management of Pain, Agitation/Sedation, Delirium, Immobility, and Sleep Disruption in Adult Patients in the ICU. *Crit Care Med.* sept 2018;46(9):e825-73.
11. Queralt M, Lamazere C. Hypnosis and intensive care nursing, fusion or fiction?. *Rev Infirm.* nov 2018;67(245):23-4.
12. Jaber S, Bahloul H, Guétin S, Chanques G, Sebbane M, Eledjam J-J. Effets de la musicothérapie en réanimation hors sédation chez des patients en cours de sevrage ventilatoire versus des patients non ventilés. *Ann Fr Anesth Réanimation.* jan 2007;26(1):30-8.
13. Golino AJ, Leone R, Gollenberg A, Christopher C, Stanger D, Davis TM, et al. Impact of an Active Music Therapy Intervention on Intensive Care Patients. *Am J Crit Care Off Publ Am Assoc Crit-Care Nurses.* 2019;28(1):48-55.
14. Radtke FM, Heymann A, Franck M, Maechler F, Drews T, Luetz A, et al. How to implement monitoring tools for sedation, pain and delirium in the intensive care unit: an experimental cohort study. *Intensive Care Med.* 1 Dec 2012;38(12):1974-81.
15. de Jong A, Molinari N, de Lattre S, Gniadek C, Carr J, Conseil M, et al. Decreasing severe pain and serious adverse events while moving intensive care unit patients: a prospective interventional study (the NURSE-DO project). *Crit Care.* 2013;17(2):R74.
16. Broucqsaault-Dédrie C, De Jonckheere J, Jeanne M, Nseir S. Measurement of Heart Rate Variability to Assess Pain in Sedated Critically Ill Patients: A Prospective Observational Study. *PLoS ONE* 25 jan 2016 ;11(1).
17. Logier R, Jeanne M, De jonckheere J, Dassonneville A, Delecroix M, Tavernier B. PhysioDoloris: a monitoring device for Analgesia / Nociception balance evaluation using Heart Rate Variability analysis. In: 2010 Annual International Conference of the IEEE Engineering in Medicine and Biology. 2010. p. 1194-7.
18. Gruenewald M, Ilies C, Herz J, Schoenherr T, Fudickar A, Höcker J, et al. Influence of nociceptive stimulation on analgesia nociception index (ANI) during propofol–remifentanil anaesthesia. *Br J Anaesth.* 1 juin 2013;110(6):1024-30.
19. Boselli E, Daniela-Ionescu M, Bégou G, Bouvet L, Dabouz R, Magnin C, et al. Prospective observational study of the non-invasive assessment of immediate postoperative pain using the analgesia/nociception index (ANI). *Br J Anaesth.* sept 2013;111(3):453-9.
20. Chanques G, Tarri T, Ride A, Prades A, De Jong A, Carr J, et al. Analgesia nociception index for the assessment of pain in critically ill patients: a diagnostic accuracy study. *Br J Anaesth.* oct 2017;119(4):812-20.
21. Jess G, Pogatzki-Zahn EM, Zahn PK, Meyer-Frieem CH. Monitoring heart rate variability to assess experimentally induced pain using the analgesia nociception index: A randomised volunteer study. *Eur J Anaesthesiol.* feb 2016;33(2):118-25.
22. Chanques G, Nelson J, Puntillo K. Five patient symptoms that you should evaluate every day. *Intensive Care Med.* 1 July 2015;41(7):1347-50.

23. Toulouse E, Masseguin C, Lafont B, McGurk G, Harbonn A, A Roberts J, et al. French legal approach to clinical research. *Anaesth Crit Care Pain Med.* déc 2018;37(6):607-14.
24. Chanques G, Garnier O, Carr J, Conseil M, de Jong A, Rowan CM, et al. The CAM-ICU has now a French « official » version. The translation process of the 2014 updated Complete Training Manual of the Confusion Assessment Method for the Intensive Care Unit in French (CAM-ICU.fr). *Anaesth Crit Care Pain Med.* oct 2017;36(5):297-300.
25. Chanques G, Ely EW, Garnier O, Perrigault F, Eloi A, Carr J, et al. The 2014 updated version of the Confusion Assessment Method for the Intensive Care Unit compared to the 5th version of the Diagnostic and Statistical Manual of Mental Disorders and other current methods used by intensivists. *Ann Intensive Care.* March 2018
26. Ely EW, Truman B, Shintani A, Thomason JWW, Wheeler AP, Gordon S, et al. Monitoring sedation status over time in ICU patients: reliability and validity of the Richmond Agitation-Sedation Scale (RASS). *JAMA.* 11 juin 2003;289(22):2983-91.
27. Chanques G, Jaber S, Barbotte E, Verdier R, Henriette K, Lefrant J-Y, et al. [Validation of the french translated Richmond vigilance-agitation scale]. *Ann Fr Anesth Reanim.* July 2006;25(7):696-701.
28. Sessler CN, Gosnell MS, Grap MJ, Brophy GM, O'Neal PV, Keane KA, et al. The Richmond Agitation-Sedation Scale: validity and reliability in adult intensive care unit patients. *Am J Respir Crit Care Med.* 15 nov 2002;166(10):1338-44.
29. Lambden S, Laterre PF, Levy MM, Francois B. The SOFA score—development, utility and challenges of accurate assessment in clinical trials. *Crit Care.* 27 nov 2019;23:374.
30. Chanques G, Viel E, Constantin J-M, Jung B, de Lattre S, Carr J, et al. The measurement of pain in intensive care unit: Comparison of 5 self-report intensity scales. *PAIN.* Dec 2010;151(3):711-21.
31. Neill JJ, Dunn OJ. Equality of Dependent Correlation Coefficients. *Biometrics.* 1975;31(2):531-43.
32. Boonstra AM, Stewart RE, Köke AJA, Oosterwijk RFA, Swaan JL, Schreurs KMG, et al. Cut-Off Points for Mild, Moderate, and Severe Pain on the Numeric Rating Scale for Pain in Patients with Chronic Musculoskeletal Pain: Variability and Influence of Sex and Catastrophizing. *Front Psychol.* 30 sept 2016;7:1466.
33. Marjanovic, Nicolas S et al. “Evaluation of emotional excitation during standardized endotracheal intubation in simulated conditions.” *Annals of intensive care* vol. 8,1 117. 4 Dec. 2018.
34. Paniccia M, Paniccia D, Thomas S, Taha T, Reed N. Clinical and non-clinical depression and anxiety in young people: A scoping review on heart rate variability. *Auton Neurosci Basic Clin.* dec 2017;208:1-14.
35. Verweij LM, Kivits JTS, Weber F. The performance of the heart rate variability-derived Newborn Infant Parasympathetic Evaluation Index as a measure of early postoperative pain and discomfort in infants-A prospective observational study. *Paediatr Anaesth.* july 2021;31(7):787-93.
36. Gélinas C, Joffe AM, Szumita PM, Payen J-F, Bérubé M, Shahiri T S, et al. A Psychometric Analysis Update of Behavioral Pain Assessment Tools for Noncommunicative, Critically Ill Adults. *AACN Adv Crit Care.* 15 dec 2019;30(4):365-87.
37. Chanques G, Tarri T, Ride A, Prades A, De Jong A, Carr J, et al. Analgesia nociception index for the assessment of pain in critically ill patients: a diagnostic accuracy study. *Br J Anaesth.* oct 2017;119(4):812-20.
38. Ely EW, Margolin R, Francis J, May L, Truman B, Dittus R, et al. Evaluation of delirium in critically ill patients: validation of the Confusion Assessment Method for the Intensive Care Unit (CAM-ICU). *Crit Care Med.* july 2001;29(7):1370-9.
39. Chanques G, Constantin J-M, Devlin JW, Ely EW, Fraser GL, Gélinas C, et al. Analgesia and sedation in patients with ARDS. *Intensive Care Med.* dec 2020;46(12):2342-56.

SERMENT

- *En présence des Maîtres de cette école, de mes chers condisciples et devant l'effigie d'Hippocrate, je promets et je jure, au nom de l'Être suprême, d'être fidèle aux lois de l'honneur et de la probité dans l'exercice de la médecine.*
- *Je donnerai mes soins gratuits à l'indigent et n'exigerai jamais un salaire au-dessus de mon travail.*
- *Admis (e) dans l'intérieur des maisons, mes yeux ne verront pas ce qui s'y passe, ma langue taira les secrets qui me seront confiés, et mon état ne servira pas à corrompre les mœurs, ni à favoriser le crime.*
- *Respectueux (se) et reconnaissant (e) envers mes Maîtres, je rendrai à leurs enfants l'instruction que j'ai reçue de leurs pères.*
- *Que les hommes m'accordent leur estime si je suis fidèle à mes promesses. Que je sois couvert (e) d'opprobre et méprisé (e) de mes confrères si j'y manque.*

ABSTRACT

Introduction: The management of the comfort of patients in intensive care is fundamental because of the invasive nature of the care and the criticism of the situation which is associated with many states of post-traumatic stress in surviving patients. The Analgesia Nociception Index (ANI) is a tool currently used to monitor pain, ranging from 0 (predominant sympathetic tone, maximum pain) to 100 (predominant parasympathetic tone, no pain). In this ancillary study of an interventional study evaluating different relaxation techniques, we explore the association between ANI and different symptoms of suffering, with the hypothesis that ANI is not a specific measure of pain.

Methods: Discomfort, pain, anxiety, dyspnea, thirst and lack of rest, which are the main symptoms associated with suffering in intensive care, were measured as well as ANI before and after 4 periods of randomized 15-minutes relaxation: standard relaxation, Music Care© music therapy, DeepSen® virtual reality (VR) headset (real images) or Healthy Mind® (synthetic images). The primary outcome was the correlation between ANI values and the 0-10 numerical scales measured by the Spearman coefficient.

Results: 404 evaluations were analyzed in 60 patients. ANI was significantly correlated with pain ($r = -0.13$; $p = 0.006$), discomfort ($r = -0.13$; $p = 0.007$), anxiety ($r = -0.12$; $p = 0.02$) and lack of rest ($r = -0.11$; $p = 0.03$), but not thirst or dyspnea. There was a significant difference between the ANI / pain correlation and the ANI / thirst and dyspnea correlation, but the difference was not significant between the ANI / pain correlation and the ANI / discomfort, anxiety and lack of rest correlation ($p > 0.7$; Hotelling - William method)

Conclusion: ANI is not only as the name suggests a marker of pain and nociception, but rather a marker of more general suffering, including other symptoms of stress.

RESUME

Introduction : La prise en charge du confort des patients en réanimation est fondamentale au vu du caractère invasif des soins et de la criticité de la situation qui est associée à de nombreux états de stress post traumatique. L'Analgesia Nociception Index (ANI) est un outil utilisé pour monitorer la douleur, s'échelonnant de 0 (tonus sympathique prédominant, douleur maximale) à 100 (tonus parasympathique prédominant, absence de douleur). Dans cette étude ancillaire d'une étude interventionnelle évaluant différentes techniques de relaxation, nous explorons l'association entre l'ANI et différents symptômes de souffrance, dans l'hypothèse que l'ANI ne soit pas une mesure spécifique de la douleur.

Méthodes : L'inconfort, la douleur, l'anxiété, la dyspnée, la soif et le manque de repos, qui sont les principaux symptômes associés à la souffrance en réanimation, ont été mesurés de même que l'ANI avant et après des 4 périodes de relaxation de 15 min ordonnées de manière randomisée : relaxation standard, musicothérapie Music Care[©], casque de réalité virtuelle (VR) DeepSen[®] (images réelles) ou Healthy Mind[®] (images synthétique). Le critère de jugement principal était la corrélation entre les valeurs d'ANI et les échelles numériques 0-10 mesurée par le coefficient de Spearman.

Résultats : 406 évaluations ont été analysées chez 60 patients. L'ANI était corrélée significativement à la douleur ($r = -0,13$; $p = 0,006$), l'inconfort ($r = -0,13$; $p = 0,007$), l'anxiété ($r = -0,12$; $p = 0,02$) et au manque de repos ($r = -0,11$; $p = 0,03$), mais pas à la soif ni à la dyspnée. Il existait une différence significative entre la corrélation ANI/douleur et la corrélation ANI/soif et dyspnée, mais la différence n'était pas significative entre la corrélation ANI/douleur et la corrélation ANI/inconfort, anxiété et manque de repos ($p > 0,7$; méthode de Hotelling - William)

Conclusion : L'ANI n'est pas seulement comme son nom l'indique un marqueur de la douleur et de nociception, mais plutôt un marqueur de souffrance plus globale, incluant d'autres symptômes de stress comme l'inconfort général, l'anxiété, et le manque de repos. En cas de valeur basse mesurée avec l'ANI, tout source potentielle de stress et de souffrance doivent être recherchée et pas seulement la douleur.

Mots Clés (8) : Analgesia-Nociception-Index, Réponse physiologique de stress, Douleur, Anxiété, Réanimation Thérapeutiques non pharmacologiques, Musicothérapie, Réalité virtuelle