



HAL
open science

sRAGE et asthme : une étude prospective sur 68 enfants âgés de 7 ans

Julie Magnier

► To cite this version:

Julie Magnier. sRAGE et asthme : une étude prospective sur 68 enfants âgés de 7 ans. Médecine humaine et pathologie. 2020. dumas-03467389

HAL Id: dumas-03467389

<https://dumas.ccsd.cnrs.fr/dumas-03467389>

Submitted on 6 Dec 2021

HAL is a multi-disciplinary open access archive for the deposit and dissemination of scientific research documents, whether they are published or not. The documents may come from teaching and research institutions in France or abroad, or from public or private research centers.

L'archive ouverte pluridisciplinaire **HAL**, est destinée au dépôt et à la diffusion de documents scientifiques de niveau recherche, publiés ou non, émanant des établissements d'enseignement et de recherche français ou étrangers, des laboratoires publics ou privés.

UNIVERSITÉ CLERMONT AUVERGNE
UFR DE MÉDECINE ET DES PROFESSIONS PARAMÉDICALES

THÈSE D'EXERCICE

Pour le

DIPLÔME D'ÉTAT DE DOCTEUR EN MÉDECINE

Par

MAGNIER Julie

Présentée et soutenue publiquement le 23 octobre 2020

TITRE DE LA THÈSE

**sRAGE et asthme : une étude prospective sur 68 enfants
âgés de 7 ans**

Directeur de thèse : Madame EGRON Carole, Docteur, CHU Clermont-Ferrand
Service Pédiatrie Générale

Président du jury : Monsieur SAPIN Vincent, Professeur, UFR de Médecine et des
Professions paramédicales de Clermont-Ferrand

Membres du jury : Monsieur LABBE André, Professeur, UFR de Médecine et des
Professions paramédicales de Clermont-Ferrand
Madame COSTE Karen, Maître de conférences, UFR de Médecine et des
professions paramédicales de Clermont-Ferrand,
Madame JULIAN Valérie Maître de conférence, UFR de Médecine et des professions
paramédicales de Clermont-Ferrand,

UNIVERSITÉ CLERMONT AUVERGNE
UFR DE MÉDECINE ET DES PROFESSIONS PARAMÉDICALES

THÈSE D'EXERCICE

Pour le

DIPLÔME D'ÉTAT DE DOCTEUR EN MÉDECINE

Par

MAGNIER Julie

Présentée et soutenue publiquement le 23 octobre 2020

TITRE DE LA THÈSE

**sRAGE et asthme : une étude prospective sur 68 enfants
âgés de 7 ans**

Directeur de thèse : Madame EGRON Carole, Docteur, CHU Clermont-Ferrand
Service Pédiatrie Générale

Président du jury : Monsieur SAPIN Vincent, Professeur, UFR de Médecine et des
Professions paramédicales de Clermont-Ferrand

Membres du jury : Monsieur LABBE André, Professeur, UFR de Médecine et des
Professions paramédicales de Clermont-Ferrand
Madame COSTE Karen, Maître de conférences, UFR de Médecine et des
professions paramédicales de Clermont-Ferrand,
Madame JULIAN Valérie Maître de conférence, UFR de Médecine et des professions
paramédicales de Clermont-Ferrand,

UNIVERSITE CLERMONT AUVERGNE

PRESIDENTS HONORAIRES
UNIVERSITE D'AUVERGNE

: **JOYON** Louis
: **DOLY** Michel
: **TURPIN** Dominique
: **VEYRE** Annie
: **DULBECCO** Philippe
: **ESCHALIER** Alain

PRESIDENTS HONORAIRES
UNIVERSITE BLAISE PASCAL

: **CABANES** Pierre
: **FONTAINE** Jacques
: **BOUTIN** Christian
: **MONTEIL** Jean-
Marc
: **ODOUARD** Albert
: **LAVIGNOTTE**
Nadine

PRESIDENT DE L'UNIVERSITE et
PRESIDENT DU CONSEIL ACADEMIQUE PLENIER
PRESIDENT DU CONSEIL ACADEMIQUE RESTREINT
VICE-PRESIDENT DU CONSEIL D'ADMINISTRATION

: **BERNARD** Mathias
: **DEQUIEDT** Vianney
: **WILLIAMS**
Benjamin

VICE-PRESIDENT DE LA COMMISSION DE LA
RECHERCHE VICE PRESIDENTE DE LA COMMISSION
DE LA
FORMATION ET DE LA VIE UNIVERSITAIRE
DIRECTEUR GENERAL DES SERVICES

: **HENRARD** Pierre
: **PEYRARD** Françoise
: **PAQUIS** François

☆☆☆☆

**UFR DE MEDECINE
ET DES PROFESSIONS PARAMEDICALES**

DOYENS HONORAIRES

: **DETEIX** Patrice
: **CHAZAL** Jean

DOYEN

: **CLAVELOU** Pierre

RESPONSABLE ADMINISTRATIVE

: **ROBERT** Gaëlle

LISTE DU PERSONNEL ENSEIGNANT

PROFESSEURS HONORAIRES :

MM. BACIN Franck - BEGUE René-Jean - BOUCHER Daniel - BOURGES Michel -
BUSSIÈRE Jean-Louis - CANO Noël - CASSAGNES Jean - CATILINA Pierre -
CHABANNES Jacques – CHAZAL Jean - CHIPPONI Jacques - CHOLLET Philippe -
COUDERT Jean - DASTUGUE
Bernard - DAUPLAT Jacques – DECHELOTTE Pierre - DEMEOCQ François -
DE RIBEROLLES Charles - ESCANDE Georges -Mme FONCK Yvette - MM. GENTOU
Claude
- GLANDDIER Gérard - Mme GLANDDIER Phyllis – M. JACQUETIN Bernard –
Mme LAVARENNE Jeanine - MM. LAVERAN Henri - LESOURD Bruno - LEVAI Jean-
Paul -
MAGE Gérard - MALPUECH Georges - MARCHEIX Jean-Claude - MICHEL Jean-Luc -
MOLINA Claude - MONDIE Jean-Michel - PERI Georges - PETIT Georges - PHILIPPE
Pierre - PLAGNE Robert - PLANCHE Roger - PONSONNAILLE Jean - REY Michel - Mme
RIGAL Danièle - MM. ROZAN Raymond - SCHOEFFLER Pierre - SIROT Jacques -
SOUTEYRAND Pierre - TANGUY Alain - TERVER Sylvain - THIEBLOT Philippe -
TOURNILHAC Michel - VANNEUVILLE Guy - VIALLET Jean-François - Mlle VEYRE
Annie

PROFESSEURS EMERITES :

MM. - BEYTOUT Jean - BOITEUX Jean-Paul - BOMMELAER Gilles - CHAMOIX Alain
-
DETEIX Patrice – DUBRAY Claude - ESCHALIER Alain - IRTIUM Bernard - KEMENY
Jean-
Louis – LABBE André - Mme LAFEUILLE Hélène – MM. LEMERY Didier - LUSSON
JeanRené - RIBAL Jean-Pierre

PROFESSEURS DES UNIVERSITES-PRATICIENS HOSPITALIERS

PROFESSEURS DE CLASSE EXCEPTIONNELLE

M. VAGO Philippe	Histologie-Embryologie Cytogénétique
M. AUMAITRE Olivier	Médecine Interne
M. LABBE André	Pédiatrie
M. AVAN Paul	Biophysique et Traitement de l'Image
M. DURIF Franck	Neurologie
M. BOIRE Jean-Yves	Biostatistiques, Informatique Médicale et Technologies de Communication
M. BOYER Louis	Radiologie et Imagerie Médicale option Clinique
M. POULY Jean-Luc	Gynécologie et Obstétrique
M. CANIS Michel	Gynécologie-Obstétrique
Mme PENAUT-LLORCA Frédérique	Anatomie et Cytologie Pathologiques
M. BAZIN Jean-Etienne	Anesthésiologie et Réanimation Chirurgicale
M. BIGNON Yves Jean	Cancérologie option Biologique
M. BOIRIE Yves	Nutrition Humaine
M. CLAVELOU Pierre	Neurologie
M. DUBRAY Claude	Pharmacologie Clinique
M. GILAIN Laurent	O.R.L.
M. LEMAIRE Jean-Jacques	Neurochirurgie
M. CAMILLERI Lionel	Chirurgie Thoracique et Cardio-Vasculaire
M. DAPOIGNY Michel	Gastro-Entérologie
M. LLORCA Pierre-Michel	Psychiatrie d'Adultes
M. PEZET Denis	Chirurgie Digestive
M. SOUWEINE Bertrand	Réanimation Médicale
M. BOISGARD Stéphane	Chirurgie Orthopédique et Traumatologie
Mme DUCLOS Martine	Physiologie
M. SCHMIDT Jeannot	Thérapeutique
M. BERGER Marc	Hématologie
M. GARCIER Jean-Marc	Anatomie-Radiologie et Imagerie Médicale
M. ROSSET Eugénio	Chirurgie Vasculaire
M. SOUBRIER Martin	Rhumatologie

PROFESSEURS DE 1ère CLASSE

M. CAILLAUD Denis	Pneumo-phtisiologie
M. VERRELLE Pierre	Radiothérapie option Clinique
M. CITRON Bernard	Cardiologie et Maladies Vasculaires
M. D'INCAN Michel	Dermatologie -Vénérologie
Mme JALENQUES Isabelle	Psychiatrie d'Adultes

Mlle BARTHELEMY Isabelle	Chirurgie Maxillo-Faciale
M. GERBAUD Laurent	Epidémiologie, Economie de la Santé et Prévention
M. TAUVERON Igor	Endocrinologie et Maladies Métaboliques
M. MOM Thierry	Oto-Rhino-Laryngologie
M. RICHARD Ruddy	Physiologie
M. RUIVARD Marc	Médecine Interne
M. SAPIN Vincent	Biochimie et Biologie Moléculaire
M. BAY Jacques-Olivier	Cancérologie
M. COUDEYRE Emmanuel	Médecine Physique et de Réadaptation
Mme GODFRAIND Catherine	Anatomie et Cytologie Pathologiques
M. ABERGEL Armando	Hépatologie
M. LAURICHESSE Henri	Maladies Infectieuses et Tropicales
M. TOURNILHAC Olivier	Hématologie
M. CHIAMBARETTA Frédéric	Ophthalmologie
M. FILAIRE Marc	Anatomie – Chirurgie Thoracique et Cardio-Vasculaire
M. GALLOT Denis	Gynécologie-Obstétrique
M. GUY Laurent	Urologie
M. TRAORE Ousmane	Hygiène Hospitalière
M. ANDRE Marc	Médecine Interne
M. BONNET Richard	Bactériologie, Virologie
M. CACHIN Florent	Biophysique et Médecine Nucléaire
M. COSTES Frédéric	Physiologie
M. FUTIER Emmanuel	Anesthésiologie-Réanimation
Mme HENG Anne-Elisabeth	Néphrologie
M. MOTREFF Pascal	Cardiologie
Mme PICKERING Gisèle	Pharmacologie Clinique
M. RABISCHONG Benoît	Gynécologie Obstétrique

PROFESSEURS DE
2ème CLASSE

Mme CREVEAUX Isabelle	Biochimie et Biologie Moléculaire
M. FAICT Thierry	Médecine Légale et Droit de la Santé
Mme KANOLD LASTAWIECKA Justyna	Pédiatrie
M. TCHIRKOV Andréï	Cytologie et Histologie
M. CORNELIS François	Génétique
M. DESCAMPS Stéphane	Chirurgie Orthopédique et Traumatologique
M. POMEL Christophe	Cancérologie – Chirurgie Générale
M. CANAVESE Fédérico	Chirurgie Infantile
M. LESENS Olivier	Maladies Infectieuses et Tropicales
M. AUTHIER Nicolas	Pharmacologie Médicale
M. BROUSSE Georges	Psychiatrie Adultes/Addictologie
M. BUC Emmanuel	Chirurgie Digestive
M. CHABROT Pascal	Radiologie et Imagerie Médicale
M. LAUTRETTE Alexandre	Néphrologie Réanimation Médicale

M. AZARNOUSH Kasra	Chirurgie Thoracique et Cardiovasculaire
Mme BRUGNON Florence	Biologie et Médecine du Développement et de la Reproduction
Mme HENQUELL Cécile	Bactériologie Virologie
M. ESCHALIER Romain	Cardiologie
M. MERLIN Etienne	Pédiatrie
Mme TOURNADRE Anne	Rhumatologie
M. DURANDO Xavier	Cancérologie
M. DUTHEIL Frédéric	Médecine et Santé au Travail
Mme FANTINI Maria Livia	Neurologie
M. SAKKA Laurent	Anatomie – Neurochirurgie
M. BOURDEL Nicolas	Gynécologie-Obstétrique
M. GUIEZE Romain	Hématologie
M. POINCLOUX Laurent	Gastroentérologie
M. SOUTEYRAND Géraud	Cardiologie
M. EVRARD Bertrand	Immunologie
M. POIRIER Philippe	Parasitologie et Mycologie

PROFESSEURS DES UNIVERSITES

M. CLEMENT Gilles	Médecine Générale
Mme MALPUECH-BRUGERE Corinne	Nutrition Humaine
M. VORILHON Philippe	Médecine Générale

PROFESSEURS ASSOCIES DES UNIVERSITES

Mme BOTTET-MAULOUBIER Anne	Médecine Générale
M. CAMBON Benoît	Médecine Générale
M. TANGUY Gilles	Médecine Générale

MAITRES DE CONFERENCES DES UNIVERSITES - PRATICIENS HOSPITALIERS

<i>MAITRES DE CONFERENCES HORS CLASSE</i>
--

Mme CHAMBON Martine	Bactériologie Virologie
---------------------	-------------------------

**MAITRES DE CONFERENCES DE
1ère CLASSE**

M. MORVAN Daniel	Biophysique et Traitement de l'Image
Mle GOUMY Carole	Cytologie et Histologie, Cytogénétique
Mme FOGLI Anne	Biochimie Biologie Moléculaire
Mle GOUAS Laetitia	Cytologie et Histologie, Cytogénétique
M. MARCEAU Geoffroy	Biochimie Biologie Moléculaire
Mme MINET-QUINARD Régine	Biochimie Biologie Moléculaire
M. ROBIN Frédéric	Bactériologie
Mle VERONESE Lauren	Cytologie et Histologie, Cytogénétique
M. DELMAS Julien	Bactériologie
Mle MIRAND Audrey	Bactériologie Virologie
M. OUCHCHANE Lemlih	Biostatistiques, Informatique Médicale et Technologies de Communication
M. LIBERT Frédéric	Pharmacologie Médicale
Mle COSTE Karen	Pédiatrie
Mle AUMERAN Claire	Hygiène Hospitalière
Mme CASSAGNES Lucie	Radiologie et Imagerie Médicale
M. LEBRETON Aurélien	Hématologie
M. BUISSON Anthony	Gastroentérologie

**MAITRES DE CONFERENCES DE
2ème CLASSE**

Mme PONS Hanaë	Biologie et Médecine du Développement et de la Reproduction
M. JABAUDON-GANDET Matthieu	Anesthésiologie – Réanimation Chirurgicale
M. BOUVIER Damien	Biochimie et Biologie Moléculaire
M. COLL Guillaume	Neurochirurgie
Mme SARRET Catherine	Pédiatrie
M. MAQDASY Salwan	Endocrinologie, Diabète et Maladies Métaboliques
Mme NOURRISSON Céline	Parasitologie - Mycologie

MAITRES DE CONFERENCES DES UNIVERSITES

VAURS-BARRIERE Catherine	Biochimie Biologie Moléculaire
Mme BAILLY Jean-Luc	Bactériologie Virologie

Mle	AUBEL Corinne	Oncologie Moléculaire
M.	BLANCHON Loïc	Biochimie Biologie Moléculaire
Mle	GUILLET Christelle	Nutrition Humaine
M.	BIDET Yannick	Oncogénétique
M.	MARCHAND Fabien	Pharmacologie Médicale
M.	DALMASSO Guillaume	Bactériologie
M.	SOLER Cédric	Biochimie Biologie Moléculaire
M.	GIRAUDET Fabrice	Biophysique et Traitement de l'Image
Mme	VAILLANT-ROUSSEL Hélène	Médecine Générale
Mme	LAPORTE Catherine	Médecine Générale
M.	LOLIGNIER Stéphane	Neurosciences – Neuropharmacologie
Mme	MARTEIL Gaëlle	Biologie de la Reproduction
M.	PINEL Alexandre	Nutrition Humaine
M.	PIZON Frank	Santé Publique

MAITRES DE CONFERENCES ASSOCIES DES UNIVERSITES

M.	BERNARD Pierre	Médecine Générale
Mme	ESCHALIER Bénédicte	Médecine Générale
Mme	RICHARD Amélie	Médecine Générale
M.	TESSIERES Frédéric	Médecine Générale

Remerciements

Je remercie profondément toutes les personnes, qui, de près ou de loin, m'ont permis de mener à bien cette thèse, par leur soutien, leurs encouragements et leurs conseils.

Je tiens particulièrement à remercier ma directrice de thèse, Mme Carole EGRON pour ses conseils, sa disponibilité et pour m'avoir encadrée pendant ces deux années de travail.

Je remercie Mr André LABBE qui a accepté d'être mon président de jury ainsi que Mme COSTE, Mr SAPIN et Mme JULIAN pour avoir accepté de participer à mon jury de thèse.

Mes remerciements vont également à Aurélien MULIEZ pour sa collaboration et ses conseils dans le travail d'analyses statistiques, ainsi qu'à toutes les personnes ayant participé à cette étude de cohorte réalisée dans le cadre de ce travail.

A tous les médecins que j'ai croisé et côtoyé pendant mes études, ceux qui ont pris le temps de me former.

Merci à mes parents, mon frère mon parrain et ma marraine pour votre amour et votre accompagnement plein d'attention et de respect tout au long de ces études exigeantes. Ma réussite vous revient en partie.

Merci à Marion et Alexia, qui me suivent et me soutiennent au quotidien depuis le début de cette aventure qu'ont été les études de médecine.

Merci à Mathilde, Maryse et Camille avec qui j'ai partagé le meilleur de l'externat et bien plus encore.

Merci à Bayane, Camille et tous mes autres co internes qui m'ont accompagné ces dernières années.

Et enfin, merci à Morgane qui me supporte et me soutient chaque jour depuis bientôt 3 ans et sans qui la vie ne serait pas aussi belle.

TABLE DES MATIERES

<i>LISTES DES TABLEAUX ET FIGURES</i>	13
<i>LISTES DES ABREVIATIONS</i>	14
<i>sRAGE and asthma: A prospective study in 68 children aged 7 years</i>	15
<i>ABSTRACT</i>	16
<i>INTRODUCTION</i>	17
<i>MATERIALS AND METHOD</i>	19
<i>STUDY DESIGN</i>	19
<i>ETHICS</i>	19
<i>STUDY POPULATION</i>	19
<i>COLLECTED DATA</i>	19
<i>CLINICAL DATA</i>	19
<i>PULMONARY FUNCTION TESTING</i>	20
<i>BIOLOGICAL ASSESSMENT</i>	21
<i>STATISTICAL ANALYSIS</i>	22
<i>RESULTS</i>	23
<i>Population</i>	23
<i>sRAGE levels</i>	23
<i>Mean levels</i>	23
<i>Asthma and atopic status</i>	24
<i>Environment</i>	26
<i>DISCUSSION</i>	28
<i>CONCLUSION</i>	32
<i>SERMENT D'HIPPOCRATE</i>	36
<i>Résumé</i>	38

LISTES DES TABLEAUX ET FIGURES

TABLEAUX :

TABLE I MEAN SERUM sRAGE LEVELS	24
---------------------------------------	----

FIGURES :

FIGURE 1. sRAGE ARISES BY ALTERNATIVE SPLICING MECHANISMS OR THROUGH PROTEOLYTIC CLEAVAGE. sRAGE INCLUDES THE EXTRACELLULAR DOMAIN OF mRAGE. IN THE EXTRACELLULAR COMPARTMENT, sRAGE ACTS AS A DECOY BY CAPTURING mRAGE RECEPTOR LIGANDS AND BLOCKING ITS PRO-INFLAMMATORY SIGNAL.....	18
FIGURE 2. COMPARISON OF PLASMA sRAGE LEVELS IN ASTHMATIC AND NON-ASTHMATIC PATIENTS.....	25
FIGURE 3. sRAGE LEVEL ACCORDING TO ASTHMA DIAGNOSIS (P = 0.238).....	26
FIGURE 4. sRAGE LEVEL ACCORDING TO TOBACCO EXPOSURE (P = 0.053).....	27

LISTES DES ABREVIATIONS

AGEs : advanced glycation end products

AAI : airway inflammation

ARDS : acute respiratory distress syndrome

BAL : broncho alveolar lavage

FeNO : fraction of exhaled nitric oxide

FEF : forced expiratory flow

FEV1 : Forced expiratory volume in 1 second

FVC : forced vital capacity

HMGB1: high mobility group box 1 protein

PEF : peak expiratory flow

MEF : maximum expiratory flow

MMEF : maximum mid-expiratory flow

mRAGE: membrane receptor for advanced glycation end products

Rint : Interrupter resistance

sRAGE: soluble receptor for advanced glycation end products

sRAGE and asthma: A prospective study in 68 children aged 7 years

Julie MAGNIER¹, Valérie JULIAN ², Vincent SAPIN³, Aurélien Mulliez,⁴ Alexandra USCLADE,⁵ Emmanuelle ROCHETTE,⁵ Bertrand EVRARD,^{6,7} André LABBE,¹ Karen Coste⁸, Carole EGRON ¹

¹Department of Pediatrics, CHU Clermont- Ferrand, Clermont-Ferrand, France

²Department of Sport Medicine and Functional Explorations, Diet and Musculoskeletal Health Team, CRNH, INRA, University Teaching Hospital of Clermont-Ferrand, University of Clermont Auvergne, Clermont-Ferrand France

³ Department of Medical Biochemistry and Molecular Biology, CHU Clermont-Ferrand and GReD, Université Clermont Auvergne, CNRS UMR 6293, INSERM U1103, Clermont-Ferrand, France

⁴Department of Clinical Research and Innovation at CHU Clermont-Ferrand, Clermont-Ferrand, France

⁵ Department of Clinical Research for Children (CRECHE) at CHU Clermont-Ferrand, Clermont-Ferrand, France

⁶CHU Clermont-Ferrand, Service d'Immunologie, CHU Gabriel-Montpied, 58 rue Montalembert, F63003 Clermont-Ferrand, France, F-63003 Clermont-Ferrand, France

⁷Clermont Université, Université d'Auvergne, UFR Pharmacie, ERTICa, F-63003 Clermont-Ferrand, France

⁸Department of Pediatrics, CHU Clermont- Ferrand and GReD, Université Clermont Auvergne, CNRS UMR 6293, INSERM U1103, Clermont-Ferrand, France

Auteur principal:

Julie MAGNIER

ABSTRACT

BACKGROUND: Asthma is a chronic inflammatory disease of the airways common in children. In severe cases it can lead to chronic bronchitis in adulthood. The soluble receptor for advanced glycation end products (sRAGE) is a biomarker of lung injury. Its assay has a prognostic value in acute respiratory distress syndrome (ARDS) and could be useful in asthma. Few studies are currently available in children.

MATERIALS AND METHODS: We conducted a prospective, observational, analytical study at Clermont-Ferrand University Hospital. Our main objective was to measure serum sRAGE levels in asthmatic and healthy children aged 7 years.

RESULTS: Of the 68 children assessed, 15 (22.05%) presented asthma. All presented normal respiratory function. The mean plasma sRAGE level was 1875 pg/mL (SD = 472) in asthmatic children and 1794 pg/mL (SD = 418) in healthy children ($p = 0.525$). Mean plasma sRAGE level was significantly decreased with tobacco exposure during pregnancy: 1478 pg/mL (SD = 296) versus 1870 pg/mL (SD = 422). Lower levels were observed in children living in apartments (1557 pg/mL) than in those living in houses (1863 pg/mL) ($p = 0.031$).

CONCLUSION: No difference was observed in serum sRAGE levels in asthmatic children in our population. Most were well treated and controlled. The use of inhaled corticosteroids at an efficient dose may have normalized serum sRAGE levels in this population. Environmental exposure could have an impact on its levels. Further studies are needed, and concomitant assessment in broncho-alveolar lavage fluid and serum could help to better understand its role.

KEYWORDS: sRAGE Biomarker Asthma Tobacco Children

INTRODUCTION

Asthma is a chronic inflammatory disease of the airways associated with airway wall remodeling.

It is important to evaluate inflammatory status, especially in severe cases, to adapt therapeutics. Currently, the main methods to evaluate airway inflammation include sputum analysis, exhaled breath condensate, and fraction of exhaled nitric oxide (FeNO).¹

RAGE is a receptor abundantly expressed in the lungs, particularly in alveolar epithelial type I cells.^{2,3} It is an important mediator in allergic airway inflammation (AAI) and asthma. RAGE is a protein of the immunoglobulin superfamily.⁴ It is found in the body in two main forms: membrane-bound RAGE (mRAGE) and soluble RAGE (sRAGE).⁵ Three domains make up the membrane-bound RAGE: an extracellular domain for the recognition and linking of RAGE ligands, a hydrophobic transmembrane domain, and a cytoplasmic domain for intracellular signaling. The best studied ligands are advanced glycation end products (AGEs), high mobility group box 1 protein (HMGB1), proteins from the S100 family, and beta-amyloid peptides.⁶ Soluble RAGE contains only the extracellular domain of mRAGE. It is a product of either alternative splicing events^{5,7} or the proteolytic cleavage of mRAGE⁸ by ADAM10 or matrix metalloproteinase 9.^{9,10} It can bind ligands but cannot transduce signals intracellularly, making it a decoy receptor that sequesters RAGE ligands and prevents inflammatory responses¹¹ (Figure 1¹²).

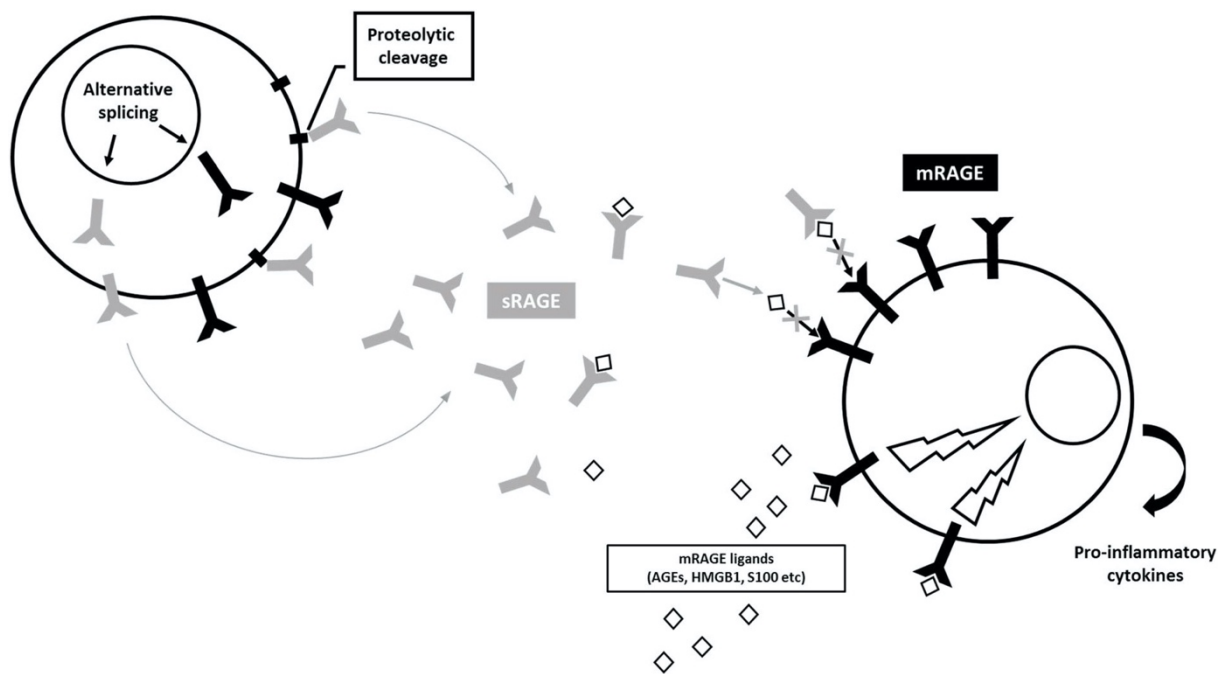


Figure 1. sRAGE arises by alternative splicing mechanisms or through proteolytic cleavage. sRAGE includes the extracellular domain of mRAGE. In the extracellular compartment, sRAGE acts as a decoy by capturing mRAGE receptor ligands and blocking its pro-inflammatory signal

Several human studies argue that sRAGE is a marker of pulmonary damage processes. In both adults and children, plasma sRAGE is associated with severity and prognosis of ARDS.^{13,14} As asthma is an inflammatory disease, RAGE and its soluble form might be expected to play a role in its pathogenesis. A study in mouse RAGE knockouts demonstrated that the absence of RAGE abolished most of the typical pathological indicators of asthma, including airway hypersensitivity, eosinophilic inflammation and airway remodeling, suggesting that RAGE might be a principal mediator of asthma pathogenesis.¹⁵ Few studies are available and the correlation between serum sRAGE levels in young children with recurrent wheezing and its severity is still unclear.^{16,1} In this study, we assessed serum sRAGE levels in children aged 7 years and evaluated its correlation with asthma.

MATERIALS AND METHOD

STUDY DESIGN

We assessed healthy and asthmatic children from a cohort of children included during an episode of acute bronchiolitis during the 2011-2012 winter epidemic season at the University Hospital of Clermont-Ferrand (Auvergne Rhône-Alpes, France).

ETHICS

All the children and their parents gave written informed consent to take part.

The research protocol for this study was first approved by our institutional review board (*Comité de Protection des Personnes Nord Ouest IV*, France, approval number 2018-A02659-46).

STUDY POPULATION

All children aged 7 years, included prospectively in a cohort during the acute bronchiolitis epidemic season in winter 2011-2012 (at inclusion, were considered all children aged below 1 year presenting at the Pediatric Emergency Department for a first episode of acute bronchiolitis).

Children with bronchopulmonary dysplasia, history of prematurity under 34 weeks, cystic fibrosis, known immune deficiencies, suspected primary ciliary dyskinesia, congenital heart disease, or acute renal failure were excluded from the study.

COLLECTED DATA

CLINICAL DATA

A clinical questionnaire was administered to assess data on respiratory symptoms (day or night cough, discomfort during exercise, use of salbutamol), respiratory treatments (corticosteroid p.o. or inhaled, long-acting bronchodilator), hospitalization for asthma, wheezing outside viral episodes, personal atopy (presence of atopic dermatitis, eczema, rhino-conjunctivitis, food

anaphylaxis from birth), environmental exposure to tobacco smoke (current or during pregnancy), pets, type of housing, daycare attendance and number of siblings.

Sociodemographic data were also collected, including sex, weight, height and precariousness assessed using the EPICES (Assessment of Precariousness and Health Inequalities in Health Examination Centers) questionnaire.¹⁷ A precariousness threshold of 30 was considered.

Data from physical examination including symptoms of asthma, existence of eczema or signs of rhino-conjunctivitis, or chest deformity were also collected.

Asthma was defined according to the frequency of the following symptoms: asthma symptoms (tachypnea, wheezing, expiratory stridor, respiratory chest retraction), doctor-diagnosed wheezes or the use of anti-asthmatic medication. If ≥ 3 respiratory symptoms were documented ≥ 2 times, or if any such episode lasted ≥ 4 weeks, then the subject was classified as suffering from asthma.^{18,19}

PULMONARY FUNCTION TESTING

Spirometry was performed using the Jaeger MasterScreen. The spirometer was calibrated each morning using a 3-liter syringe. A nose clip was applied, and the children underwent a forced vital capacity (FVC) test in accordance with American Thoracic Society/ European Thoracic Society 2005 spirometry standards.²⁰ For each child, we obtained three FVC maneuvers meeting ATS/ERS acceptability criteria. Forced expiratory volume in 1 second (FEV1), forced vital capacity (FVC), the peak expiratory flow (PEF), maximum mid-expiratory flow (MMEF), forced expiratory flow (FEF), maximum expiratory flow (MEF), and maximum expiratory flow at 25%, 50%, and 75% expiratory volume (MEF 25, MEF 50, MEF 75) were measured.

Interrupter resistance (Rint) was measured using a Spiro Dyn apparatus (Spiro Dyn'R, Toulouse) calibrating daily for flow. Rint was measured during a 100 ms occlusion during expiration. During measurements, the child was seated and asked to breathe quietly, connected

to the flowmeter by a mouthpiece. Measurements were made with the child's head held in the neutral position, cheeks and chin held by a physician.

The examinations were performed with and without bronchodilator. For bronchodilator response, 400 µg of salbutamol was inhaled through the spacer device. Fifteen minutes after administration of the drug, each child underwent further spirometry to evaluate bronchodilator response.

Normal pattern was defined by normal FVC and normal FEV₁/FVC ratio. Significant obstructive ventilator disorder was defined by FEV₁/FVC < 0.8.

We considered significant reversibility for an increase of 12% in FEV₁ or a decrease of 35% in Rint.

BIOLOGICAL ASSESSMENT

sRAGE levels were measured in duplicate using purpose-designed commercially available ELISA kits (RAGE Quantikine, R&D Systems, Minneapolis, MN) with a manufacturer-stated detection limit of 78 pg/mL. The personnel responsible for performing sRAGE assays had no knowledge of the clinical setting.

Eosinophilia was defined as levels above 0.300 G/L.²¹

Prick tests were carried out by the same trained clinical research nurse to optimize reproducibility. Skin prick tests included histamine and physiological serum as controls, and the main aeroallergens (*Dermatophagoides pteronyssinus*, *Dermatophagoides farinae*, *Alternaria*, timothy grass, birch, cats and dogs), and the main trophallergens (egg, peanut, walnut, almond, hazelnut, soy). Papule diameter was measured at 20 minutes. The prick test was considered positive with a diameter equal to or greater than 3 mm, compared to the control.

Sensitization to aeroallergens and trophallergens was confirmed by unitary assay of specific serum IgE by ImmunoCAP (Phadia 250®, Phadia AB, Uppsala, Sweden). ImmunoCap Phadia 250® provides a quantitative result ranging from 0.1 to 100 kUA/L. We took 0.35 kUA/L as the positive threshold. Multi-sensitization was defined if tests (SPT or IgE assay) were positive for at least two allergens.

STATISTICAL ANALYSIS

Statistics were computed using Stata v15 (StataCorp, College Station, Texas, USA). Study sample is described by frequency and percentage for categorical data and by means \pm standard deviation for continuous data or by median and interquartile range when data were not normal. Comparisons of sRAGE levels were made using Student's *t*-test for two groups (or ANOVA for three or more groups), or Mann and Whitney's test (or Kruskal-Wallis for three or more groups) when data were not normal. Relationships of sRAGE with continuous data were sought using Pearson's correlation coefficient (or Spearman's when data not normal). All tests were two-sided and a *p*-value $< 5\%$ was considered significant.

RESULTS

Population

In all, 68 children were evaluated at age 7 years. Our sample was composed mainly of boys (63.2%), aged 7.68 ± 0.3 years. Mean body mass index was 15.9 kg/m^2 (± 2.1 SD). Fifty-six children (82.3%) lived in a house. Animals were present at home for 48 (70.6%) of them, cats for 25 (36.8%). Twenty-six children (38.2%) were exposed to tobacco smoking, 10 (14.7%) during pregnancy. Precariousness was suspected by the EPICES score for 7 patients (10.3%). We found an asthma rate of 22.05% in our population, i.e. in 15 children. Among these 12 (80%) presented persistent asthma since age 3 years and three (20%) developed symptoms at school age. At clinical examination, only one child presented wheezing. None had any chest deformity. All except one used Ventolin (93%) and 11 (73%) followed a background treatment. We noted an atopic family history for 47 patients (69.1%), 17 patients (25 %) presented an atopic dermatitis history, 20 (29.4%) presented respiratory allergic symptoms, and none had a food allergy.

Regarding respiratory functional exploration, none of the children had any obstructive ventilation disorder (FEV_1 $104\% \pm 9.3\%$, FEV_1/FVC $107\% \pm 6$). We noted reversibility in 29 children (44.6% of our population), observed in five asthmatic patients (35.7%) and 24 of the non-asthmatics (45%), $p = 0.45$.

We highlighted aero sensitization for 16 (20%) children. Eosinophilia was observed for 30 children (44.8%).

sRAGE levels

The main results are reported in Table 1.

Mean levels

The mean plasma sRAGE level was $1812 (\pm 428 \text{ SD}) \text{ pg/mL}$ at 7 years.

There was no significant difference between plasma sRAGE level according to sex in our population (1842 (\pm 430 SD) pg/mL in girls and 1795 (\pm 432 SD) pg/mL in boys).

We found no correlation between sRAGE and BMI ($r = 0.17$, $p = 0.17$) or with birth term ($r = -0.08$, $p = 0.53$)

Table I Mean serum sRAGE levels

	Mean serum sRAGE (pg/mL)				
	Yes	N	No	N	p
Asthma 7 years	1875 \pm 472	15	1794 \pm 418	53	0.525
Patient with inhaled treatment	1893 \pm 453	23	1771 \pm 414	45	0.271
Personal atopic status					
<i>Aeroallergen sensitization</i>	1908 \pm 494	16	1783 \pm 406	52	0.309
<i>Eosinophilia</i>	1821 \pm 380	30	1819 \pm 465	37	0.981
Environmental exposures					
<i>Tobacco smoking in utero</i>	1478 \pm 296	10	1870 \pm 422	58	0.007
<i>Passive tobacco smoking</i>	1772 \pm 479	26	1837 \pm 397	42	0.547
<i>Apartment</i>	1557 \pm 372	11	1863 \pm 427	56	0.031
<i>Cat</i>	1774 \pm 311	25	1834 \pm 485	43	0.579

Asthma and atopic status

There was no significant difference in plasma sRAGE levels between asthmatic patients and healthy patients (Figures 2 and 3): 1875 (\pm 472 SD) pg/mL versus 1794 respectively ($p = 0.525$). sRAGE levels did not differ in patients with significant reversibility (1690 (\pm 683 SD) versus 1787 \pm 381 pg/mL respectively). sRAGE levels were not correlated to eosinophil level

($r = -0.10$, $p = 0.42$), and no difference was observed in eosinophilic versus non-eosinophilic patients (Table 1). In the same way, sRAGE levels did not differ in sensitized versus non-sensitized patients. The same results were observed in the asthmatic population (for aeroallergen sensitization ($p = 0.418$) and eosinophilic status ($p = 1$)).

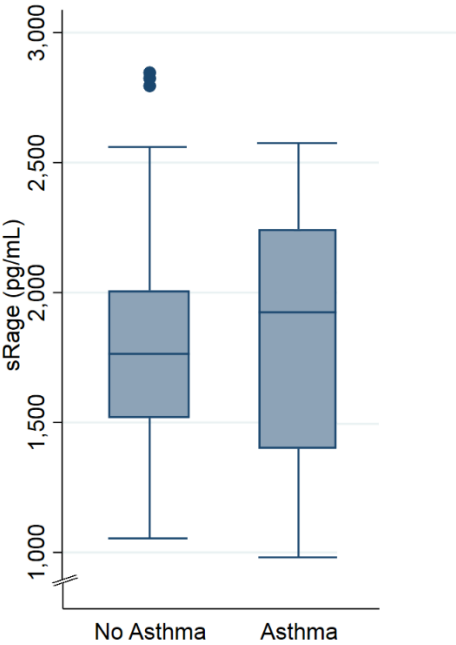


Figure 2. Comparison of plasma sRAGE levels in asthmatic and non-asthmatic patients

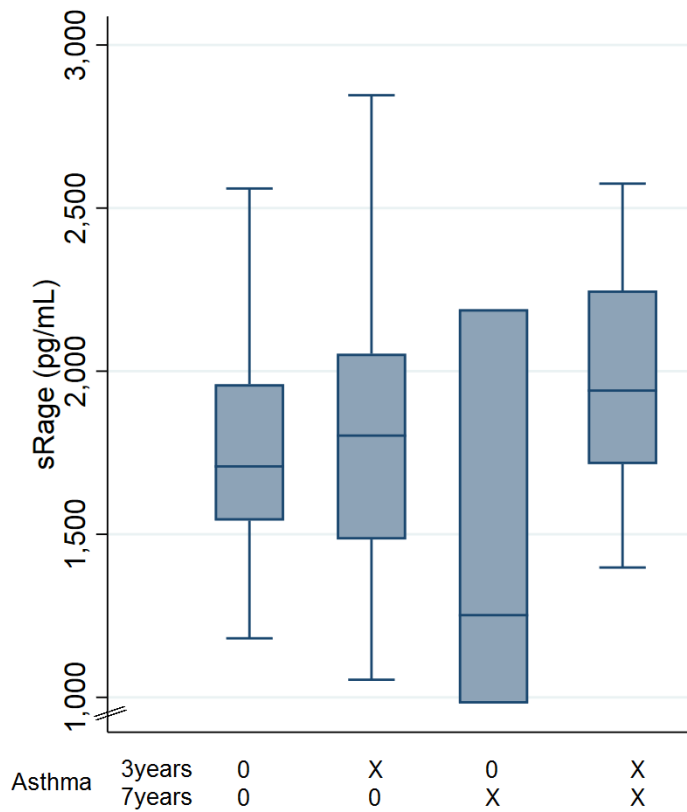


Figure 3. sRAGE level according to asthma diagnosis ($p = 0.238$)

sRAGE level in pg/mL, - (absence) and × (presence)

Environment

Mean plasma sRAGE levels were significantly decreased in children exposed to tobacco smoking during pregnancy (Table 1). Conversely, current passive tobacco exposure had no impact on its levels ($p = 0.547$). Association of antenatal and current exposure (Figure 4), was associated with decreased levels of SRAGE, but not significantly ($p = 0.053$). In asthmatic patients, sRAGE levels were lowered in children exposed to tobacco during pregnancy (1257 ± 96 versus 2099 ± 303 pg/mL in none, $p = 0.004$) unlike those exposed to tobacco currently ($1686 (\pm 271 \text{ SD})$ pg/mL versus $1805 (\pm 388 \text{ SD})$ pg/mL in none, $p = 0.550$).

Lower levels were observed in children living in apartments than in those living in houses (Table 1).

The presence of animals had no impact on sRAGE levels at 7 ($p = 0.322$, especially cats $p = 0.579$).

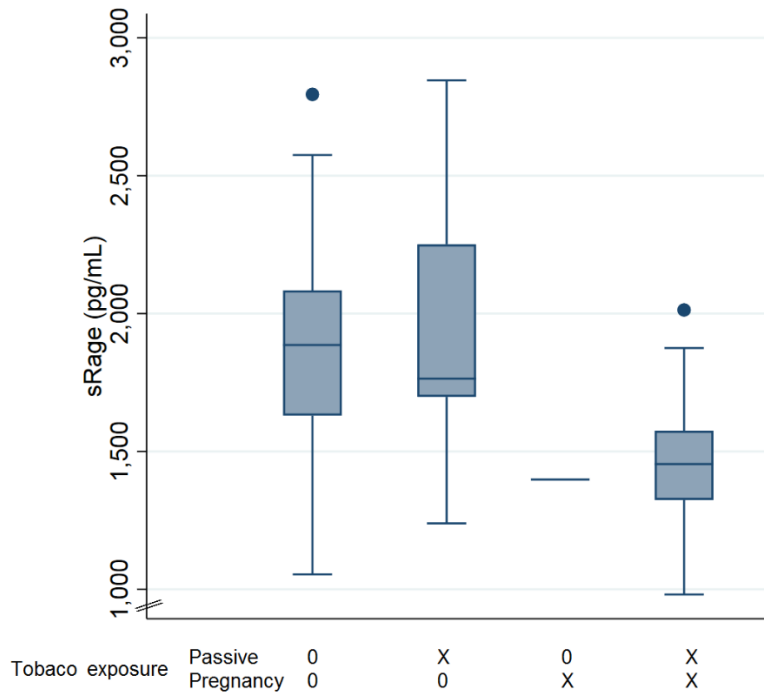


Figure 4. sRAGE level according to tobacco exposure ($p = 0.053$)

sRAGE level in pg/mL, - (absence) and × (presence)

DISCUSSION

The main objective of this study was to investigate the association between serum sRAGE levels and asthma in children at age 7 years. The study enrolled 68 children: to our knowledge, this is so far the largest cohort of patients in a study of sRAGE levels at age 7 years in healthy children or with asthma.

In children, studies examining the role of sRAGE in the pathogenesis of asthma are limited.

Since sRAGE levels have been scantily studied in children, we do not currently have reference values in the literature that are significantly different from adults. The processes of lung maturation and alveolation are thought to explain higher sRAGE levels in infants³ and we observe a decrement in its levels as alveolation phenomena gradually cease. In our previous study, conducted on infants aged under 1 year, we found a mean serum sRAGE level of 2203 (\pm 905 SD) pg/mL in the healthy group.¹² At age 7 years, we observed mean plasma sRAGE level of 1794 (\pm 418 SD) pg/mL in healthy children. In an adult population²² the mean plasma sRAGE level significantly decreased compared with 550 pg/mL in controls. However, these observations need to be confirmed given the small number of studies available and the variability in the levels observed.^{23,24}

Initially, sRAGE was studied as a marker of lung epithelial injury and alveolar fluid clearance. Several studies showed its utility for evaluating the severity and prognosis of lung injury in acute respiratory distress syndrome (ARDS) in adults and children, with elevated levels. Jabaudon *et al.* provide evidence that alveolar epithelial injury at baseline, as assessed by elevated plasma sRAGE, is an independent variable associated with 90-day mortality in ARDS.²⁵ In children, sRAGE levels were higher in PARDS non-survivors, correlated with number of non-pulmonary organ failures and associated with mortality in direct lung injury and in immunocompetent children.²⁶ Median levels observed in these cases were strongly elevated (5000 pg/mL [2600–7200], $p = 0.005$). As sRAGE is more highly expressed in BAL fluid than

in serum²⁷ (ratio of 4), its serum elevation in ARDS could reflect alveolo-capillary membrane damage with a marked leakage of sRAGE from BAL to serum.

Unlike ARDS, bronchial inflammation seems responsible for decreasing sRAGE levels in adults and pediatric health disorders. Decreased sRAGE plasma levels are associated with increased progression of airflow limitations in COPD patients.²⁸ In pediatric patients, significant lower sRAGE levels were observed in asthmatic patients and a cut-off value of serum sRAGE levels for asthma diagnosis of 1080.4 pg/mL has been proposed. sRAGE levels could be correlated and used as a severity biomarker, with lowered levels in uncontrolled and severe asthmatic subgroups compared to others.¹⁶ In these conditions, sRAGE could act as a decoy and serve as an anti-inflammatory element to limit the activation of the RAGE cascade. If sRAGE is considered as a “blocker” of the inflammatory cascade, it could be “consumed” by its binding with pro-inflammatory RAGE ligands to control the inflammation and therefore be found in lower quantities in the plasma. Unlike the lesions induced by ARDS, asthma does not reach the alveolo-capillary membrane and we might expect the blood levels to approach the levels found in the BAL fluid with a consumption proportional to that of the inflammation of the airways. Our present study showed sRAGE levels to be conserved in asthmatic patients. This can be explained by the fact that almost all our patients presented controlled asthma, with normal respiratory function, and daily treatment. A well-taken inhaled corticosteroid treatment controls lung inflammation and could therefore normalize serum level of sRAGE. The study of Sukkar *et al.*²⁹ in clinically stable asthma adult patients demonstrated that the levels could remain relatively stable regardless of the medical therapy used. In addition, the type of inflammation could modify the expected values of sRAGE. Eosinophilic or neutrophilic inflammation may influence sRAGE level.²⁴ In our study, eosinophilia and sensitization did not impact sRAGE levels, but our asthmatic population was too small to draw any firm conclusion.

Environmental exposure such as to atmospheric pollution and tobacco smoke can cause bronchial inflammation. Decreased sRAGE levels were observed in children living in apartments. We can reasonably assume that this type of housing corresponds to urban living. Exposed to urban pollution, these children may thus have underlying inflammation of the lower airways responsible for sRAGE consumption. The same results were observed with tobacco exposure. Cigarette smoke is known to increase the formation of AGEs and the expression of RAGE.³⁰ However, the effect of cigarette smoking on sRAGE is inconsistent across the literature. Decreased, elevated, and unchanged levels of sRAGE have been found in different studies, as reviewed by Prasad and colleagues.³¹ Mostly confirmed our results, with reduced sRAGE levels. Duration and time of the exposure could be determinant. Recently, Pouwels *et al.*³² showed that smoking immediately and severely decreased serum sRAGE levels. The time lag between tobacco exposure and blood testing should be taken account. We did not analyze the time lag and intensity of prior smoking exposure in our study, which could be a source of bias. However, *in utero* exposure appeared to impact sRAGE levels more strongly than postnatal exposure. Children with high early-life exposure were more likely than unexposed children to have early transient and persistent asthma and a reduction in FEV1/FVC in adulthood.^{33,34} As sRAGE is correlated to alveolation processes, we can expect persistent consequences of tobacco smoking during pregnancy on sRAGE levels in children exposed.

To address the questions raised in this pilot study, a new study is planned on inflammatory biomarkers in serum and BAL fluid in children undergoing endobronchial fibroscopy, to clarify the mechanism of sRAGE anti-inflammatory action and analyze the correlation of its levels in the different fluids.

CONCLUSION

Our study showed no significant difference between the serum levels of sRAGE in healthy and asthmatic children. Most of the asthmatic children were well treated and controlled. By reducing bronchial inflammation, the use of inhaled corticosteroids at an efficient dose may have normalized serum levels of sRAGE in our population. Active airway inflammation was correlated with low sRAGE levels, as shown in children exposed to tobacco smoking and urban pollution. This argues for an anti-inflammatory action by blocking the RAGE inflammatory cascade in the lungs. Further studies are needed, and concomitant assessment in BAL fluid and serum could help to better understand its role.

CONCLUSION



UFR DE MÉDECINE
ET DES PROFESSIONS PARAMÉDICALES
Université Clermont Auvergne

Service de la formation
3ème cycle - Pôle 3

CONCLUSION

Bien que nos résultats ne montrent pas de différence significative sur les taux sériques de sRAGE entre les enfants sains et asthmatiques, sRAGE semble être un biomarqueur d'inflammation bronchique intéressant y compris chez l'enfant. Les patients asthmatiques de notre population étaient traités et contrôlés expliquant nos résultats. Une nouvelle étude chez l'enfant asthmatique avec évaluation concomitante des taux de sRAGE dans le lavage broncho alvéolaire et sériques devrait nous aider à approfondir l'intérêt du dosage de ce biomarqueur.

Clermont-Ferrand, le 30.9.20
Pierre CLAVELOU
Doyen - Directeur



Clermont-Ferrand, le 23/09/20
Le Président du Jury,
Pa. Vincent SAPIN

UFR de Médecine et des Professions Paramédicales
Service de la formation - Pôle 3
ISA 50400
28, Place Henri-Dunant
63001 Clermont-Ferrand Cedex 1

REFERENCES BIBLIOGRAPHIQUES

1. Li Y, Wu R, Tian Y, Bao T, Tian Z. Fraction of exhaled nitric oxide and soluble receptors for advanced glycation end products are negatively correlated in children with recurrent wheezing. *Asian Pac J Allergy Immunol* 2017;35(1):33–37.
2. Demling N, Ehrhardt C, Kasper M, Laue M, Knels L, Rieber EP. Promotion of cell adherence and spreading: a novel function of RAGE, the highly selective differentiation marker of human alveolar epithelial type I cells. *Cell Tissue Res* 2006;323(3):475–488.
3. Buckley ST, Ehrhardt C. The Receptor for Advanced Glycation End Products (RAGE) and the Lung. *Journal of Biomedicine and Biotechnology* 2010;2010:1–11.
4. Neeper M, Schmidt AM, Brett J, Yan SD, Wang F, Pan YC, Elliston K, Stern D, Shaw A. Cloning and expression of a cell surface receptor for advanced glycosylation end products of proteins. *J Biol Chem* 1992;267(21):14998–15004.
5. Yonekura H, Yamamoto Y, Sakurai S, Petrova RG, Abedin MJ, Li H, Yasui K, Takeuchi M, Makita Z, Takasawa S, et al. Novel splice variants of the receptor for advanced glycation end-products expressed in human vascular endothelial cells and pericytes, and their putative roles in diabetes-induced vascular injury. *Biochem J* 2003;370(Pt 3):1097–1109.
6. Bierhaus A, Humpert PM, Morcos M, Wendt T, Chavakis T, Arnold B, Stern DM, Nawroth PP. Understanding RAGE, the receptor for advanced glycation end products. *J Mol Med* 2005;83(11):876–886.
7. Harashima A, Yamamoto Y, Cheng C, Tsuneyama K, Myint KM, Takeuchi A, Yoshimura K, Li H, Watanabe T, Takasawa S, et al. Identification of mouse orthologue of endogenous secretory receptor for advanced glycation end-products: structure, function and expression. *Biochem J* 2006;396(1):109–115.
8. Hanford LE, Enghild JJ, Valnickova Z, Petersen SV, Schaefer LM, Schaefer TM, Reinhart TA, Oury TD. Purification and characterization of mouse soluble receptor for advanced glycation end products (sRAGE). *J Biol Chem* 2004;279(48):50019–50024.
9. Raucci A, Cugusi S, Antonelli A, Barabino SM, Monti L, Bierhaus A, Reiss K, Saftig P, Bianchi ME. A soluble form of the receptor for advanced glycation endproducts (RAGE) is produced by proteolytic cleavage of the membrane-bound form by the sheddase a disintegrin and metalloprotease 10 (ADAM10). *FASEB J* 2008;22(10):3716–3727.
10. Zhang L, Bukulin M, Kojro E, Roth A, Metz VV, Fahrenholz F, Nawroth PP, Bierhaus A, Postina R. Receptor for advanced glycation end products is subjected to protein ectodomain shedding by metalloproteinases. *J Biol Chem* 2008;283(51):35507–35516.
11. Oczypok EA, Perkins TN, Oury TD. All the “RAGE” in lung disease: The receptor for advanced glycation endproducts (RAGE) is a major mediator of pulmonary inflammatory responses. *Paediatric Respiratory Reviews* 2017;23:40–49.
12. Egron C, Roszyk L, Rochette E, Jabaudon M, Sapin V, Mulliez A, Labbé A, Coste K. Serum soluble receptor for advanced glycation end-products during acute bronchiolitis in infant: Prospective study in 93 cases. *Pediatr Pulmonol* 2018;53(10):1429–1435.
13. Jabaudon M, Futier E, Roszyk L, Chalus E, Guerin R, Petit A, Mrozek S, Perbet S, Cayot-Constantin S, Chartier C, et al. Soluble form of the receptor for advanced glycation end products is a marker of acute lung injury but not of severe sepsis in critically ill patients*: *Critical Care Medicine* 2011;39(3):480–488.
14. Mrozek S, Jabaudon M, Jaber S, Paugam-Burtz C, Lefrant J-Y, Rouby J-J, Asehnoune K, Allaouchiche B, Baldesi O, Leone M, et al. Elevated Plasma Levels of sRAGE Are Associated With Nonfocal CT-Based Lung Imaging in Patients With ARDS. *Chest* 2016;150(5):998–1007.
15. Milutinovic PS, Alcorn JF, Englert JM, Crum LT, Oury TD. The receptor for advanced glycation end products is a central mediator of asthma pathogenesis. *Am J Pathol* 2012;181(4):1215–1225.

16. El-Seify MYH, Fouda EM, Nabih ES. Serum level of soluble receptor for advanced glycation end products in asthmatic children and its correlation to severity and pulmonary functions. *Clin Lab* 2014;60(6):957–962.
17. Sass C, Guéguen R, Moulin J-J, Abric L, Dauphinot V, Dupré C, Giordanella J-P, Girard F, Guenot C, Labbé É, et al. Comparaison du score individuel de précarité des Centres d'examens de santé, EPICES, à la définition socio-administrative de la précarité. *Sante Publique* 2006;Vol. 18(4):513–522.
18. Hovland V, Riiser A, Mowinckel P, Carlsen K-H, Carlsen KCL. The significance of early recurrent wheeze for asthma outcomes in late childhood. *European Respiratory Journal* 2013;41(4):838–845.
19. Moral L, Vizmanos G, Torres-Borrego J, Praena-Crespo M, Tortajada-Girbés M, Pellegrini FJ, Asensio Ó. Asthma diagnosis in infants and preschool children: a systematic review of clinical guidelines. *Allergologia et Immunopathologia* 2019;47(2):107–121.
20. Standardisation of spirometry | European Respiratory Society. [accessed 2020 Jul 6]. <https://erj.ersjournals.com/content/26/2/319.long>
21. Ortega HG, Liu MC, Pavord ID, Brusselle GG, FitzGerald JM, Chetta A, Humbert M, Katz LE, Keene ON, Yancey SW, et al. Mepolizumab Treatment in Patients with Severe Eosinophilic Asthma. *New England Journal of Medicine* 2014;371(13):1198–1207.
22. Lyu Y, Zhao H, Ye Y, Liu L, Zhu S, Xia Y, Zou F, Cai S. Decreased soluble RAGE in neutrophilic asthma is correlated with disease severity and RAGE G82S variants. *Molecular Medicine Reports* 2018;17(3):4131–4137.
23. García-Salido A, Oñoro G, Melen GJ, Gómez-Piña V, Serrano-González A, Ramírez-Orellana M, Casado-Flores J. Serum sRAGE as a Potential Biomarker for Pediatric Bronchiolitis: A Pilot Study. *Lung* 2015;193(1):19–23.
24. Patregnani JT, Brooks BA, Chorvinsky E, Pillai DK. High BAL sRAGE is Associated with Low Serum Eosinophils and IgE in Children with Asthma. *Children* 2020;7(9):110.
25. Jabaudon M, Blondonnet R, Pereira B, Cartin-Ceba R, Lichtenstern C, Mauri T, Determann RM, Drabek T, Hubmayr RD, Gajic O, et al. Plasma sRAGE is independently associated with increased mortality in ARDS: a meta-analysis of individual patient data. *Intensive Care Med* 2018;44(9):1388–1399.
26. Yehya N, Thomas NJ, Meyer NJ, Christie JD, Berg RA, Margulies SS. Circulating markers of endothelial and alveolar epithelial dysfunction are associated with mortality in pediatric acute respiratory distress syndrome. *Intensive Care Med* 2016;42(7):1137–1145.
27. Yerkovich ST, Chang AB, Carroll ML, Petsky HL, Scrivener G, Upham JW. Soluble receptor for advanced glycation end products (sRAGE) is present at high concentrations in the lungs of children and varies with age and the pattern of lung inflammation. *Respirology* 2012;17(5):841–846.
28. Iwamoto H, Gao J, Pulkkinen V, Toljamo T, Nieminen P, Mazur W. Soluble receptor for advanced glycation end-products and progression of airway disease. *BMC Pulm Med* 2014;14:68.
29. Sukkar MB, Wood LG, Tooze M, Simpson JL, McDonald VM, Gibson PG, Wark P a. B. Soluble RAGE is deficient in neutrophilic asthma and COPD. *European Respiratory Journal* 2012;39(3):721–729.
30. Reynolds PR, Kasteler SD, Cosio MG, Sturrock A, Huecksteadt T, Hoidal JR. RAGE: developmental expression and positive feedback regulation by Egr-1 during cigarette smoke exposure in pulmonary epithelial cells. *American Journal of Physiology-Lung Cellular and Molecular Physiology* 2008;294(6):L1094–L1101.
31. Prasad K, Dhar I, Caspar-Bell G. Role of Advanced Glycation End Products and Its Receptors in the Pathogenesis of Cigarette Smoke-Induced Cardiovascular Disease. *Int J Angiol* 2015;24(2):75–80.

32. Pouwels SD, Klont F, Kwiatkowski M, Wiersma VR, Faiz A, van den Berge M, Horvatovich P, Bischoff R, ten Hacken NHT. Cigarette Smoking Acutely Decreases Serum Levels of the Chronic Obstructive Pulmonary Disease Biomarker sRAGE. *Am J Respir Crit Care Med* 2018;198(11):1456–1458.
33. Thacher JD, Gehring U, Gruzieva O, Standl M, Pershagen G, Bauer C-P, Berdel D, Keller T, Koletzko S, Koppelman GH, et al. Maternal Smoking during Pregnancy and Early Childhood and Development of Asthma and Rhinoconjunctivitis – a MeDALL Project. *Environ Health Perspect* 2018 [accessed 2020 Sep 25];126(4). <https://www.ncbi.nlm.nih.gov/pmc/articles/PMC6071724/>
34. Toppila-Salmi S, Luukkainen AT, Xu B, Lampi J, Auvinen J, Dhaygude K, Järvelin M-R, Pekkanen J. Maternal smoking during pregnancy affects adult onset of asthma in offspring: a follow up from birth to age 46 years. *Eur Respir J* 2020;55(6).

SERMENT D'HIPPOCRATE

Au moment d'être admise à exercer la médecine, je promets et je jure d'être fidèle aux lois de l'honneur et de la probité.

Mon premier souci sera de rétablir, de préserver ou de promouvoir la santé dans tous ses éléments, physiques et mentaux, individuels et sociaux.

Je respecterai toutes les personnes, leur autonomie et leur volonté, sans aucune discrimination selon leur état ou leurs convictions. J'interviendrai pour les protéger si elles sont affaiblies, vulnérables ou menacées dans leur intégrité ou leur dignité. Même sous la contrainte, je ne ferai pas usage de mes connaissances contre les lois de l'humanité.

J'informerai les patients des décisions envisagées, de leurs raisons et de leurs conséquences. Je ne tromperai jamais leur confiance et n'exploiterai pas le pouvoir hérité des circonstances pour forcer les consciences.

Je donnerai mes soins à l'indigent et à quiconque me les demandera. Je ne me laisserai pas influencer par la soif du gain ou la recherche de la gloire.

Admise dans l'intimité des personnes, je tairai les secrets qui me seront confiés. Reçue à l'intérieur des maisons, je respecterai les secrets des foyers et ma conduite ne servira pas à corrompre les mœurs.

Je ferai tout pour soulager les souffrances. Je ne prolongerai pas abusivement les agonies. Je ne provoquerai jamais la mort délibérément.

Je préserverai l'indépendance nécessaire à l'accomplissement de ma mission. Je n'entreprendrai rien qui dépasse mes compétences. Je les entretiendrai et les perfectionnerai pour assurer au mieux les services qui me seront demandés.

J'apporterai mon aide à mes confrères ainsi qu'à leurs familles dans l'adversité.

Que les hommes et mes confrères m'accordent leur estime si je suis fidèle à mes promesses ; que je sois déshonorée et méprisée si j'y manque.

MAGNIER, Julie Signature

SERMENT D'HIPPOCRATE

En présence des Maîtres de cette FACULTE et de mes chers CONDISCIPLES, je promets et je jure d'être fidèle aux lois de l'Honneur et de la Probité dans l'exercice de la Médecine.

Je donnerai mes soins gratuits à l'indigent et je n'exigerai jamais un salaire au-dessus de mon travail. Admis dans l'intérieur des maisons, mes yeux ne verront pas ce qui s'y passe, ma langue taira les secrets qui me seront confiés et mon état ne servira pas à corrompre les mœurs ni à favoriser le crime.

Respectueux et reconnaissant envers mes MAÎTRES, je rendrai à leurs enfants l'instruction que j'ai reçue de leurs pères.

Que les HOMMES m'accordent leur estime si je suis fidèle à mes promesses. Que je sois couvert d'OPPROBRE et méprisé de mes confrères si j'y manque.

MAGNIER, Julie Signature

sRAGE et asthme : une étude prospective sur 68 enfants âgés de 7 ans

Résumé :

CONTEXTE L'asthme est une pathologie inflammatoire chronique des voies aériennes fréquente chez l'enfant. Son pronostic à long terme est lié au remodelage bronchique, faisant le lit de la bronchite chronique de l'adulte. L'utilisation de biomarqueurs d'inflammation bronchique semble séduisante dans l'espoir d'évaluer et de traiter au mieux ces jeunes patients. Le récepteur soluble pour les produits finaux de glycation avancée (sRAGE) est un biomarqueur de lésions pulmonaires, avec une valeur diagnostique et pronostique désormais reconnue dans le syndrome de détresse respiratoire aiguë (SDRA) de l'adulte, et semble également impliqué dans la pathogenèse d'autres maladies respiratoires comme l'asthme. Peu d'études sont disponibles actuellement chez l'enfant

OBJECTIF Évaluer le taux de sRAGE sérique chez des enfants asthmatiques et sains à l'âge de 7 ans

METHODE Nous avons mené une étude prospective, observationnelle et analytique au CHU de Clermont-Ferrand dont l'objectif principal était d'évaluer le taux de sRAGE sérique chez des enfants asthmatiques et sains à l'âge de 7 ans

RESULTATS Sur les 68 enfants évalués, 15 (22,05%) étaient asthmatiques à 7 ans. Aucun enfant ne présentait de trouble ventilatoire obstructif. Le taux plasmatique moyen de sRAGE était de 1875 (± 472 SD) pg/mL chez les enfants asthmatiques et de 1794 (± 418 SD) pg/mL chez les enfants sains $p = 0.525$.

CONCLUSION Bien que nos résultats ne montrent pas de différence significative sur les taux sériques de sRAGE entre les enfants sains et asthmatiques, sRAGE semble être un biomarqueur d'inflammation bronchique intéressant y compris chez l'enfant. Les patients asthmatiques de notre population étaient traités et contrôlés expliquant nos résultats. Une nouvelle étude chez l'enfant asthmatique avec évaluation concomitante des taux de sRAGE dans le lavage broncho-alvéolaire et sériques devrait nous aider à approfondir l'intérêt du dosage de ce biomarqueur.

Mots-clés :

- Asthme
- sRAGE
- Tabac
- Enfant
- Biomarqueur