



**HAL**  
open science

# Incidence, caractéristiques cliniques et pronostic des syndromes coronariens aigus avec sus-décalage du segment ST et reperfusion coronaire spontanée a l'ère des nouvelles stratégies anti thrombotiques

Léa Juenin

## ► To cite this version:

Léa Juenin. Incidence, caractéristiques cliniques et pronostic des syndromes coronariens aigus avec sus-décalage du segment ST et reperfusion coronaire spontanée a l'ère des nouvelles stratégies anti thrombotiques. Human health and pathology. 2021. dumas-03524169

**HAL Id: dumas-03524169**

**<https://dumas.ccsd.cnrs.fr/dumas-03524169v1>**

Submitted on 13 Jan 2022

**HAL** is a multi-disciplinary open access archive for the deposit and dissemination of scientific research documents, whether they are published or not. The documents may come from teaching and research institutions in France or abroad, or from public or private research centers.

L'archive ouverte pluridisciplinaire **HAL**, est destinée au dépôt et à la diffusion de documents scientifiques de niveau recherche, publiés ou non, émanant des établissements d'enseignement et de recherche français ou étrangers, des laboratoires publics ou privés.



Distributed under a Creative Commons Attribution - NonCommercial - ShareAlike 4.0 International License

UNIVERSITE DE MONTPELLIER  
FACULTE DE MEDECINE MONTPELLIER-NIMES

**THESE**

Pour obtenir le titre de

**DOCTEUR EN MEDECINE**

**D.E.S de MEDECINE CARDIO-VASCULAIRE**

Présentée et soutenue publiquement

Par

**Léa JUEININ**

Le 15 octobre 2021

**INCIDENCE, CARACTERISTIQUES CLINIQUES ET PRONOSTIC DES SYNDROMES  
CORONARIENS AIGUS AVEC SUS-DECALAGE DU SEGMENT ST ET REPERFUSION  
CORONAIRE SPONTANEE A L'ERE DES NOUVELLES STRATEGIES ANTI  
THROMBOTIQUES.**

Directeur de thèse : **Docteur ROBERT Pierre**

JURY

**Professeur LECLERCQ Florence**  
**Professeur ROUBILLE François**  
**Professeur CAYLA Guillaume**  
**Docteur ROBERT Pierre**

Présidente  
Assesseur  
Assesseur  
Assesseur

UNIVERSITE DE MONTPELLIER  
FACULTE DE MEDECINE MONTPELLIER-NIMES

**THESE**

Pour obtenir le titre de

**DOCTEUR EN MEDECINE**

**D.E.S de MEDECINE CARDIO-VASCULAIRE**

Présentée et soutenue publiquement

Par

**Léa JUEININ**

Le 15 octobre 2021

**INCIDENCE, CARACTERISTIQUES CLINIQUES ET PRONOSTIC DES SYNDROMES  
CORONARIENS AIGUS AVEC SUS-DECALAGE DU SEGMENT ST ET REPERFUSION  
CORONAIRE SPONTANEE A L'ERE DES NOUVELLES STRATEGIES ANTI  
THROMBOTIQUES.**

Directeur de thèse : **Docteur ROBERT Pierre**

JURY

**Professeur LECLERCQ Florence**  
**Professeur ROUBILLE François**  
**Professeur CAYLA Guillaume**  
**Docteur ROBERT Pierre**

Présidente  
Assesseur  
Assesseur  
Assesseur

**PERSONNEL ENSEIGNANT**

**Professeurs Honoraires**

ALBAT Bernard	BRUNEL Michel	JOURDAN Jacques	PAGES Michel
ALLIEU Yves	CANAUD Bernard	KLEIN Bernard	PEGURET Claude
ALRIC Robert	CHAPTAL Paul-André	LAFFARGUE François	PELISSIER Jacques
ARNAUD Bernard	CIURANA Albert-Jean	LALLEMANT Jean	PETIT Pierre
ASENCIO Gérard	CLOT Jacques	Gabriel	POUGET Régis
ASTRUC Jacques	D'ATHIS Françoise	LAMARQUE Jean-Louis	PUJOL Henri
AUSSILLOUX Charles	DEMAILLE Jacques	LAPEYRIE Henri	RABISCHONG Pierre
AVEROUS Michel	DESCOMPS Bernard	LESBROS Daniel	RAMUZ Michel
AYRAL Guy	DIMEGLIO Alain	LOPEZ François Michel	REBOUL Jean
BAILLAT Xavier	DUBOIS Jean Bernard	LORiot Jean	RIEU Daniel
BALDET Pierre	DUMAS Robert	LOUBATIERES Marie	ROCHEFORT Henri
BALDY-MOULINIER	DUMAZER Romain	Madeleine	ROUANET DE VIGNE
Michel	ECHENNE Bernard	MAGNAN DE	LAVIT Jean Pierre
BALMES Jean-Louis	FABRE Serge	BORNIER Bernard	SAINT AUBERT
BANSARD Nicole	FREREBEAU Philippe	MARTY ANE Charles	Bernard
BAYLET René	GALIFER René Benoît	MARY Henri	SANCHO-GARNIER
BILLIARD Michel	GODLEWSKI Guilhem	MATHIEU-DAUDE	Hélène
BLARD Jean-Marie	GRASSET Daniel	Pierre	SANY Jacques
BLAYAC Jean Pierre	GUILHOU Jean-	MEYNADIER Jean	SEGNARBIEUX
BLOTMAN Francis	Jacques	MICHEL François-	François
BONNEL François	HEDON Bernard	Bernard	SENAC Jean-Paul
BOUDET Charles	HERTAULT Jean	MION Charles	SERRE Arlette
BOURGEOIS Jean-	HUMEAU Claude	MION Henri	SOLASSOL Claude
Marie	JAFFIOL Claude	MIRO Luis	VIDAL Jacques
BOUSQUET Jean	JANBON Charles	NAVARRO Maurice	VISIÉ Jean Pierre
BRUEL Jean Michel	JANBON François	NAVRATIL Henri	
BUREAU Jean-Paul	JARRY Daniel	OTHONIEL Jacques	

### **Professeurs Émérites**

ARTUS Jean-Claude	LARREY Dominique
BLANC François	LE QUELLEC Alain
BONAFE Alain	MARES Pierre
BOULENGER Jean- Philippe	MAUDELONDE Thierry
BOURREL Gérard	MAURY Michèle
BRINGER Jacques	MESSNER Patrick
CLAUSTRES Mireille	MILLAT Bertrand
DAURES Jean-Pierre	MONNIER Louis
DAUZAT Michel DAVY Jean Marc	MOURAD Georges PREFAUT Christian
DEDET Jean-Pierre	PUJOL Rémy
ELEDJAM Jean- Jacques	RIBSTEIN Jean SCHVED Jean-
GROLLAUX RAOUX Robert	François SULTAN Charles
GUERRIER Bernard	TOUCHON Jacques
GUILLOT Bernard	UZIEL Alain
JONQUET Olivier	VOISIN Michel
LANDAIS Paul	ZANCA Michel

### **Docteurs Émérites**

PRAT Dominique	PUJOL Joseph
----------------	--------------

**PERSONNEL ENSEIGNANT**

**Professeurs des Universités - Praticiens Hospitaliers**

**PU-PH de classe exceptionnelle**

ALRIC Pierre – Chirurgie vasculaire ; médecine vasculaire (option chirurgie vasculaire)

BACCINO Éric – Médecine légale et droit de la santé

BASTIEN Patrick – Parasitologie et mycologie

BEREGI Jean-Paul – Radiologie et imagerie médicale

BLAIN Hubert – Médecine interne ; gériatrie et biologie du vieillissement, médecine générale, addictologie

BOULOT Pierre – Gynécologie-obstétrique ; gynécologie médicale

CAPDEVILA Xavier – Anesthésiologie-réanimation

COMBE Bernard – Rhumatologie

COSTES Valérie – Anatomie et cytologie pathologiques

COTTALORDA Jérôme – Chirurgie infantile

COUBES Philippe – Neurochirurgie

COURTET Philippe – Psychiatrie d'adultes, addictologie

CRAMPETTE Louis – Oto-rhino-laryngologie

CRISTOL Jean Paul – Biochimie et biologie moléculaire

CYTEVAL Catherine – Radiologie et imagerie médicale

DE LA COUSSAYE Jean Emmanuel – Anesthésiologie-réanimation

DELAPORTE Éric – Maladies infectieuses ; maladies tropicales

DEMOLY Pascal – Pneumologie, addictologie

DE WAZIERES Benoît – Médecine interne ; gériatrie et biologie du vieillissement, médecine générale, addictologie

DOMERGUE Jacques – Chirurgie viscérale et digestive

DUFFAU Hugues – Neurochirurgie

ELIAOU Jean François – Immunologie

FABRE Jean Michel – Chirurgie générale

FRAPIER Jean-Marc – Chirurgie thoracique et cardiovasculaire  
HAMAMAH Samir – Biologie et Médecine du développement et de la reproduction ; gynécologie médicale  
HERISSON Christian – Médecine physique et de réadaptation  
JABER Samir – Anesthésiologie-réanimation  
JEANDEL Claude-Médecine interne – gériatrie et biologie du vieillissement, médecine générale, addictologie  
JONQUET Olivier – Réanimation ; médecine d'urgence  
JORGENSEN Christian – Thérapeutique ; médecine d'urgence ; addictologie  
KOTZKI Pierre Olivier – Biophysique et médecine nucléaire  
LABAUGE Pierre – Neurologie  
LEFRANT Jean-Yves – Anesthésiologie-réanimation  
LEHMANN Sylvain – Biochimie et biologie moléculaire  
LUMBROSO Serge – Biochimie et biologie moléculaire  
MERCIER Jacques – Physiologie  
MEUNIER Laurent – Dermato-vénérologie  
MONDAIN Michel – Oto-rhino-laryngologie  
MORIN Denis – Pédiatrie  
PAGEAUX Georges – Philippe-Gastroentérologie ; hépatologie ; addictologie  
PUJOL Pascal – Biologie cellulaire  
QUERE Isabelle – Chirurgie vasculaire ; médecine vasculaire (option médecine vasculaire)  
RENARD Éric – Endocrinologie, diabète et maladies métaboliques ; gynécologie médicale  
REYNES Jacques – Maladies infectieuses, maladies tropicales  
RIPART Jacques – Anesthésiologie-réanimation  
SOTTO Albert – Maladies infectieuses ; maladies tropicales  
SCHVED Jean François – Hématologie ; Transfusion  
TAOUREL Patrice – Radiologie et imagerie médicale  
TOUITOU Isabelle – Génétique  
VANDE PERRE Philippe – Bactériologie-virologie ; hygiène hospitalière  
YCHOU Marc – Cancérologie ; radiothérapie

## **PU-PH de 1<sup>re</sup> classe**

AGUILAR MARTINEZ Patricia – Hématologie ; transfusion  
ASSENAT Éric – Gastroentérologie ; hépatologie ; addictologie  
AVIGNON Antoine – Nutrition  
AZRIA David – Cancérologie ; radiothérapie  
BAGHDADLI Amaria – Pédiopsychiatrie ; addictologie  
BLANC Pierre – Gastroentérologie ; hépatologie ; addictologie  
BORIE Frédéric – Chirurgie digestive  
BOURDIN Arnaud – Pneumologie ; addictologie  
CAMBONIE Gilles – Pédiatrie  
CAMU William – Neurologie  
CANOVAS François – Anatomie  
CAPTIER Guillaume – Anatomie  
CARTRON Guillaume – -Hématologie ; transfusion  
CAYLA Guillaume – Cardiologie  
CHANQUES Gérald – Anesthésie-réanimation  
CORBEAU Pierre – Immunologie  
COULET Bertrand – Chirurgie orthopédique et traumatologique  
CUVILLON Philippe – Anesthésiologie-réanimation et médecine péri-opératoire  
DADURE Christophe – Anesthésiologie-réanimation  
DAUVILLIERS Yves – Physiologie  
DE TAYRAC Renaud – Gynécologie-obstétrique, gynécologie médicale  
DE VOS John – Cytologie et histologie  
DEMARIA Roland – Chirurgie thoracique et cardio-vasculaire  
DROUPY Stéphane – Urologie  
DUCROS Anne – Neurologie  
DUPEYRON Arnaud – Médecine physique et réadaptation  
FESLER Pierre – Médecine interne ; gériatrie et biologie du vieillissement,  
médecine générale, addictologie  
GARREL Renaud – Oto-rhino-laryngologie  
GENEVIEVE David – Génétique  
GUILLAUME Sébastien – Psychiatrie d'adultes ; addictologie  
GUIU Boris – Radiologie et imagerie médicale  
HAYOT Maurice – Physiologie



HOUEDE Nadine – Cancérologie ; radiothérapie  
KLOUCHE Kada – Réanimation ; médecine d'urgence  
KOENIG Michel – Génétique moléculaire  
KOUYOUMDJIAN Pascal – Chirurgie orthopédique et traumatologique  
LAFFONT Isabelle – Médecine physique et de réadaptation  
LAVABRE-BERTRAND Thierry – Cytologie et histologie  
LAVIGNE Jean-Philippe – Bactériologie – virologie, hygiène hospitalière  
LEMOING Vincent – Maladies infectieuses ; maladies tropicales  
LECLERCQ Florence – Cardiologie  
MARIANO-GOULART Denis – Biophysique et médecine nucléaire  
MATECKI Stéfan – Physiologie  
MORANNE Olivier – Néphrologie  
MOREL Jacques – Rhumatologie  
NAVARRO Francis – Chirurgie générale  
NOCCA David – Chirurgie viscérale et digestive  
PASQUIE Jean-Luc – Cardiologie  
PERNEY Pascal – Médecine interne ; gériatrie et biologie du vieillissement,  
médecine générale, addictologie  
PRUDHOMME Michel – Anatomie  
PUJOL Jean Louis – Pneumologie ; addictologie  
PURPER-OUAKIL Diane – Pédiopsychiatrie ; addictologie  
ROGER Pascal – Anatomie et cytologie pathologiques  
TRAN Tu-Anh – Pédiatrie  
VERNHET Hélène – Radiologie et imagerie médicale

### **PU-PH de 2ème classe**

BOURGIER Céline – Cancérologie ; radiothérapie  
CANAUD Ludovic – Chirurgie vasculaire ; Médecine Vasculaire  
CAPDEVIELLE Delphine – Psychiatrie d'Adultes ; addictologie  
CLARET Pierre-Géraud – Médecine d'urgence  
COLOMBO Pierre-Emmanuel – Cancérologie ; radiothérapie  
COSTALAT Vincent – Radiologie et imagerie médicale  
DAIEN Vincent – Ophtalmologie

DORANDEU Anne – Médecine légale

FAILLIE Jean-Luc – Pharmacologie fondamentale, pharmacologie clinique, addictologie

FUCHS Florent – Gynécologie-obstétrique ; gynécologie médicale

GABELLE DELOUSTAL Audrey – Neurologie

GAUJOUX Viala Cécile – Rhumatologie

GODREUIL Sylvain – Bactériologie-virologie ; hygiène hospitalière

GUILPAIN Philippe – Médecine Interne, gériatrie et biologie du vieillissement ; addictologie

HERLIN Christian – Chirurgie plastique, reconstructrice et esthétique, brûlologie

IMMEDIATO DAIEN Claire – Rhumatologie

JACOT William – Cancérologie ; Radiothérapie

JEZIORSKI Éric – Pédiatrie

JUNG Boris – Réanimation ; médecine d'urgence

KALFA Nicolas – Chirurgie infantile

LACHAUD Laurence – Parasitologie et mycologie

LALLEMANT Benjamin – Oto-rhino-laryngologie

LE QUINTREC Moglie - Néphrologie

LETOUZEY Vincent – Gynécologie-obstétrique ; gynécologie médicale

LONJON Nicolas - Neurologie

LOPEZ CASTROMAN Jorge – Psychiatrie d'Adultes ; addictologie

LUKAS Cédric – Rhumatologie

MENJOT de CHAMPFLEUR Nicolas – Radiologie et imagerie médicale

MILLET Ingrid – Radiologie et imagerie médicale

MURA Thibault – Biostatistiques, informatique médicale et technologies de la communication

NAGOT Nicolas – Biostatistiques, informatique médicale et technologies de la communication

OLIE Émilie – Psychiatrie d'adultes ; addictologie

NOCCA David – Chirurgie digestive

PANARO Fabrizio – Chirurgie générale

PARIS Françoise – Biologie et médecine du développement et de la reproduction ; gynécologie médicale

PELLESTOR Franck – Histologie, embryologie et cytogénétique

PASQUIE Jean-Luc – Cardiologie  
PEREZ MARTIN Antonia – Physiologie  
POUDEROUX Philippe – Gastroentérologie ; hépatologie ; addictologie  
RIGAU Valérie – Anatomie et cytologie pathologiques  
RIVIER François – Pédiatrie  
ROSSI Jean François – Hématologie ; transfusion  
ROUBILLE François – Cardiologie  
SEBBANE Mustapha – Anesthésiologie-réanimation  
SIRVENT Nicolas – Pédiatrie  
SOLASSOL Jérôme – Biologie cellulaire  
STOEBNER Pierre – Dermato-vénéréologie  
SULTAN Ariane – Nutrition  
THOUVENOT Éric – Neurologie  
THURET Rodolphe – Urologie  
TUAILLON Édouard – Bactériologie-virologie ; hygiène hospitalière  
VENAIL Frédéric – Oto-rhino-laryngologie  
VILLAIN Max – Ophtalmologie  
VINCENT Denis – Médecine interne ; gériatrie et biologie du vieillissement, médecine générale, addictologie  
VINCENT Thierry – Immunologie  
WOJTUSCISZYN Anne – Endocrinologie-diabétologie-nutrition

## **PROFESSEURS DES UNIVERSITÉS**

### **1<sup>re</sup> classe :**

COLINGE Jacques – Cancérologie, Signalisation cellulaire et systèmes complexes  
LAOUDJ CHENIVESSE Dalila – Biochimie et biologie moléculaire  
VISIER Laurent – Sociologie, démographie

## **PROFESSEURS DES UNIVERSITÉS - Médecine générale**

### **1<sup>re</sup> classe :**

LAMBERT Philippe  
AMOUYAL Michel

## **PROFESSEURS ASSOCIÉS - Médecine Générale**

CLARY Bernard

DAVID Michel

GARCIA Marc

## **PROFESSEURS ASSOCIÉS - Médecine**

BESSIS Didier – Dermato-vénéréologie

MEUNIER Isabelle – Ophtalmologie

MULLER Laurent – Anesthésiologie-réanimation

PERRIGAULT Pierre-François – Anesthésiologie-réanimation ; médecine d'urgence

QUANTIN Xavier – Pneumologie

ROUBERTIE Agathe – Pédiatrie

VIEL Éric – Soins palliatifs et traitement de la douleur

## **Maîtres de Conférences des Universités - Praticiens Hospitaliers**

### **MCU-PH Hors classe – Échelon Exceptionnel**

RICHARD Bruno – Médecine palliative

SEGONDY Michel – Bactériologie-virologie ; hygiène hospitalière

### **MCU-PH Hors classe**

BADIOUX Stéphanie – Biochimie et biologie moléculaire

BOULLE Nathalie – Biologie cellulaire

CACHEUX-RATABOUL Valère – Génétique

CARRIERE Christian – Bactériologie-virologie ; hygiène hospitalière

CHARACHON Sylvie – Bactériologie-virologie ; hygiène hospitalière

FABBRO-PERAY Pascale – Épidémiologie, économie de la santé et prévention

GIANSILY-BLAIZOT Muriel – Hématologie, transfusion

### **MCU-PH de 1<sup>re</sup> classe**

BERTRAND Martin – Anatomie

BOUDOUSQ Vincent – Biophysique et médecine nucléaire

BRET Caroline – Hématologie biologique

BROUILLET Sophie – Biologie et médecine du développement et de la reproduction ; gynécologie médicale  
COSSEE Mireille – Génétique Moléculaire  
LAVIGNE Géraldine – Hématologie ; transfusion  
LESAGE François-Xavier – Médecine et santé au travail  
MARTRILLE Laurent – Médecine légale et droit de la santé  
MATHIEU Olivier – Pharmacologie fondamentale ; pharmacologie clinique ; addictologie  
MOUZAT Kévin – Biochimie et biologie moléculaire  
PANABIERES Catherine – Biologie cellulaire  
RAVEL Christophe – Parasitologie et mycologie  
SCHUSTER-BECK Iris – Physiologie  
STERKERS Yvon – Parasitologie et mycologie  
YACHOUH Jacques – Chirurgie maxillo-faciale et stomatologie

**MCU-PH de 2<sup>ème</sup> classe**

BERGOUGNOUX Anne – Génétique  
CHIRIAC Anca – Immunologie  
DE JONG Audrey – Anesthésie-réanimation  
DU THANH Aurélie – Dermato-vénéréologie  
FITENI Frédéric – Cancérologie ; radiothérapie  
GOUZI Farès – Physiologie  
HERRERO Astrid – Chirurgie générale  
HUBERLANT Stéphanie – Gynécologie obstétrique ; Gynécologie médicale  
KUSTER Nils – Biochimie et biologie moléculaire  
MAKINSON Alain – Maladies infectieuses, Maladies tropicales  
PANTEL Alix – Bactériologie-virologie, hygiène hospitalière  
PERS Yves-Marie – Thérapeutique, addictologie  
ROUBILLE Camille – Médecine interne ; gériatrie et biologie du vieillissement ; addictologie  
SABLEWSKI Vanessa – Anatomie et cytologie pathologiques

## **MAITRES DE CONFERENCES DES UNIVERSITES - Médecine Générale**

### **MCU-MG de 1<sup>ère</sup> classe**

COSTA David

OUDE-ENGBERINK Agnès

### **MCU-MG de 2<sup>ème</sup> classe**

FOLCO-LOGNOS Béatrice

CARBONNEL François

## **MAITRES DE CONFERENCES ASSOCIES - Médecine Générale**

CAMPAGNAC Jérôme

LOPEZ Antonio

MILLION Elodie

PAVAGEAU Sylvain

REBOUL Marie-Catherine

SERAYET Philippe

## **MAITRES DE CONFERENCES DES UNIVERSITES**

### **Maîtres de Conférences hors classe**

BADIA Éric – Sciences biologiques fondamentales et cliniques

CHAZAL Nathalie – Biologie cellulaire

### **Maîtres de Conférences de classe normale**

BECAMEL Carine – Neurosciences

BERNEX Florence – Physiologie

CHAUMONT-DUBEL Séverine – Sciences du médicament et des autres produits de santé

DELABY Constance – Biochimie et biologie moléculaire

GUGLIELMI Laurence – Sciences biologiques fondamentales et cliniques

HENRY Laurent – Sciences biologiques fondamentales et cliniques

HERBET Guillaume – Neurosciences

LADRET Véronique – Mathématiques appliquées et applications des mathématiques  
 LAINE Sébastien – Sciences du Médicament et autres produits de santé  
 LE GALLIC Lionel – Sciences du médicament et autres produits de santé  
 LOZZA Catherine – Sciences physico-chimiques et technologies pharmaceutiques  
 MAIMOUN Laurent – Sciences physico-chimiques et ingénierie appliquée à la santé  
 MOREAUX Jérôme – Science biologiques, fondamentales et cliniques  
 MORITZ-GASSER Sylvie – Neurosciences  
 MOUTOT Gilles – Philosophie  
 PASSERIEUX Émilie – Physiologie  
 RAMIREZ Jean-Marie – Histologie  
 RAYNAUD Fabrice  
 TAULAN Magali – Biologie Cellulaire

### **PH chargés d'enseignements**

ABOUKRAT Patrick	BIRON-ANDREANI	CASSINOTTO
AKKARI Mohammed	Christine	Christophe
ALRIC Jérôme	BLANC Brigitte	CATHALA Philippe
AMEDRO Pascal	BLANCHARD Sylvie	CAZABAN Michel
AMOUREUX Cyril	BLANCHET Catherine	CHARBIT Jonathan
ANTOINE Valéry	BLATIERE Véronique	CHEVALLIER Thierry
ARQUIZAN Caroline	BOBBIA Xavier	CHEVALLIER-
ATTALIN Vincent	BOGE Gudrun	MICHAUD Josyane
AYRIGNAC Xavier	BOURRAIN Jean Luc	COLIN Olivier
BADR Maliha	BOUYABRINE Hassan	CONSEIL Mathieu
BAIS Céline	BRINGER-DEUTSCH	CORBEAU Catherine
BARBAR Saber Davide	Sophie	COROIAN Flavia-Oana
BASSET Didier	BRINGUIER	COURDRAY Sarah
BATIFOL Dominique	BRANCHEREAU	CRANSAC Frédéric
BATTISTELLA Pascal	Sophie	CUNTZ Danielle
BAUCHET Luc	BRISOT Dominique	DARDALHON Brigitte
BENEZECH Jean Pierre	BRONER Jonathan	DAVID Aurore
BENNYS Karim	CADE Stéphane	DE BOUTRAY Marie

BERNARD Nathalie	LAZERGES Cyril	RAPIDO Francesca
BERTRCHANSKY Ivan	LE GUILLOU Cédric	RIBRAULT Alice
BIBOULET Philippe	LEGLISE Marie	RICHAUD-MOREL
DENIS Hélène	Suzanne	Brigitte
DEVILLE de PERIERE	CAIMMI Davide Paolo	RIDOLFO Jérôme
Gilles	CARR Julie	RIPART Sylvie
DE LA TRIBONNIERE	CARTIER César	RONGIERES Michel
Xavier	CASPER Thierry	ROULET Agnès
DJANIKIAN Flora	MARGUERITE	RUBENOVITCH Josh
DONNADIEU-RIGOLE	Emmanuel	SANTONI Fannie
Hélène	MARTIN Lucille	DEBIEN Blaise
FAIDHERBE Jacques	MATTATIA Laurent	DELPONT Marion
FATTON Brigitte	MEROUEH Fadi	SASSO Milène
FAUCHERRE Vincent	MEYER Pierre	SCHULDINER Sophie
FILLERON Anne	MILESI Christophe	SEGURET Fabienne
FITENI Frédéric	MORAU Estelle	SENESSE Pierre
FOURNIER Philippe	MOSER Camille	SKALLI EI Mehdi
GAILLARD Nicolas	MOUSTY Eve	SOLA Christelle
GALMICHE Sophie	MOUTERDE Gaël	SOULLIER Camille
GENY Christian	PANSARD Nicole	STOEBNER
GERONIMI Laetitia	PERNIN Vincent	DELBARRE Anne
GINIES Patrick	PERRIGAULT Pierre	TEOT Luc
GRECO Frédéric	François	THIRION Marina
GUEDJ Anne Marie	PEYRON Pierre-	VACHIERY-LAHAYE
GUYON Gaël	Antoine	Florence
HENRY Vincent	PICARD Éric	VERNES Eric
JAMMET Patrick	PICOT Marie Christine	VINCENT Laure
JEDRYKA François	PIERONI Laurence	WAGNER Laurent
JREIGE Riad	POQUET Hélène	ZERKOWSKI Laetitia
KINNE Mélanie	PUJOL Sarah-Lise	
LABARIAS Coralie	PUPIER Florence	
LACAMBRE Mathieu	QUANTIN Xavier	
LANG Philippe	RAFFARD Laurence	



## **PRATICIENS HOSPITALIERS UNIVERSITAIRES**

BARATEAU Lucie – Physiologie

BASTIDE Sophie – Épidémiologie, économie de la santé et prévention

CAZAUBON Yoann – Pharmacologie fondamentale ; pharmacologie clinique ; addictologie

DAGNEAUX Louis – Chirurgie orthopédique et traumatologique

DUFLOS Claire – Biostatistiques ; informatique médicale et technologies de la communication

GOULABCHAND Radjiv – Médecine interne ; gériatrie et biologie du vieillissement ; addictologie

LATTUCA Benoit – Cardiologie

MARIA Alexandre – Médecine interne ; gériatrie et biologie du vieillissement ; addictologie

MIOT Stéphanie – Médecine interne ; gériatrie et biologie du vieillissement ; addictologie

SARRABAY Guillaume – Génétique

SOUICHE François-Régis – Chirurgie viscérale et digestive

# Table des matières

<b>Avant-propos</b> .....	<b>1</b>
Bibliographie relative à l'avant-propos .....	3
<b>Article en anglais</b> .....	<b>7</b>
Abbreviations .....	8
Introduction .....	9
Methods .....	10
Results.....	12
Discussion.....	24
Conclusion .....	27
References .....	28
Appendix.....	33
<b>Annexes</b> .....	<b>35</b>

## Avant-propos

La restauration précoce et complète du flux coronaire est l'objectif principal de la prise en charge du syndrome coronarien aigu avec sus décalage du segment ST (SCA ST+). En effet, la rapidité et la qualité de la reperfusion coronaire sont des facteurs pronostiques majeurs dans l'infarctus du myocarde, toutes deux associées à une diminution de la mortalité à court et moyen terme, comme cela a été démontré dans de nombreuses études <sup>1-5</sup>.

L'angioplastie primaire est actuellement le traitement de référence du SCA ST+ en phase aigüe jusqu'à 48 heures du début des douleurs selon les recommandations <sup>6-10</sup>. En parallèle, le traitement pharmacologique à la phase pré-hospitalière est fondamental, il permet de préparer et d'améliorer les résultats de l'angioplastie avec stenting et fait partie intégrante des recommandations. Il se compose d'une dose de charge d'aspirine, d'une dose d'héparine adaptée au poids du patient ainsi que d'une dose de charge d'un inhibiteur du P2Y<sub>12</sub> <sup>11</sup>. Cette dernière molécule sera choisie parmi les trois disponibles actuellement, c'est à dire ticagrelor, prasugrel ou clopidogrel avec une préférence pour les deux premières, plus récentes et plus puissantes, ayant montré une meilleure efficacité en termes d'évènements ischémiques dans les syndromes coronariens aigus <sup>12-13</sup>. Une autre molécule de la même classe thérapeutique uniquement disponible par voie veineuse, le cangrelor, pourra être utilisée chez les patients qui ne peuvent avaler les comprimés comme chez les patients intubés selon les recommandations actuelles <sup>14</sup>.

Des séries déjà anciennes montrent qu'à l'arrivée en salle de coronarographie une reperfusion coronaire complète avant tout geste endovasculaire est observée chez 15 à 30 % des patients <sup>15,16</sup>. La reperfusion coronaire complète est définie par la constatation à la coronarographie d'une recanalisation coronaire avec un flux TIMI 3 (opacification complète du lit distal sans retard) de l'artère coupable avant toute angioplastie ou geste endovasculaire (y compris thrombo-aspiration) et sans thrombolyse préalable.

De nombreuses études ont montré que la reperfusion coronaire complète à l'arrivée en salle de coronarographie constitue un facteur de bon pronostic indépendant mais aucune d'entre elle n'a été réalisée depuis l'utilisation des nouveaux inhibiteurs du P2Y<sub>12</sub> (ticagrelor et prasugrel) <sup>17-25</sup>. Une seule étude utilisant un nouvel inhibiteur du P2Y<sub>12</sub>, le ticagrelor en l'occurrence, visant à comparer son administration pré ou intra hospitalière relève l'incidence des patients arrivant avec un flux TIMI 3 à la coronarographie. Cette dernière est

sensiblement la même quel que soit le mode d'administration du ticagrelor, à savoir 17,4% lorsque le ticagrelor est administré en pré-hospitalier et 16,9% lorsqu'il l'est en intra-hospitalier <sup>26</sup>. Une autre étude récente s'est intéressée aux caractéristiques cliniques et angiographiques des patients avec reperfusion spontanée mais parmi les inhibiteurs du P2Y<sub>12</sub> seul le clopidogrel était utilisé. Cette dernière montre ainsi que 26% des patients présentent une reperfusion coronaire spontanée <sup>27</sup>.

Notre hypothèse est que la reperfusion coronaire spontanée survient plus fréquemment avec l'utilisation des nouveaux inhibiteurs du P2Y<sub>12</sub> actuellement le plus souvent utilisés dans les SCA ST+. Cet effet favorable sur la reperfusion coronaire précoce pourrait contribuer au bénéfice plus important de ces molécules constaté dans plusieurs études par rapport au clopidogrel dans le SCA ST+ <sup>12-13</sup>. Nous voudrions également évaluer si la reperfusion coronaire spontanée est plus fréquente chez certains patients, notamment ceux traités par anti agrégants plaquettaires et/ou anti coagulants au long cours et si elle est corrélée au délai entre l'administration du pré traitement et la coronarographie. Par ailleurs, nous nous intéresserons également à l'évolution de ces patients, que ce soit intra-hospitalière ou à plus long terme.

L'objectif principal de cette étude est donc d'évaluer l'incidence des patients admis pour SCA ST+ avec reperfusion coronaire spontanée constatée lors de la coronarographie en phase aiguë. Les caractéristiques cliniques et biologiques de ces patients recueillies pendant l'hospitalisation seront évaluées et comparées à ceux avec une artère occluse à l'admission. Nous évaluerons également le pronostic intra hospitalier et à un an de ces deux groupes de patients.

## Bibliographie

1/ Kleiman N S, White H D, Ohman E M, Ross A M, Woodlief L H, Califf R M, Holmes D R, Bates E, Pfisterer M, et Vahanian A. « Mortality within 24 hours of thrombolysis for myocardial infarction. The importance of early reperfusion. The GUSTO Investigators, Global Utilization of Streptokinase and Tissue Plasminogen Activator for Occluded Coronary Arteries. » *Circulation* 90, n° 6 (1 décembre 1994): 2658-65. <https://doi.org/10.1161/01.CIR.90.6.2658>.

2/ Simes R.J., Topol Eric J., Holmes David R., White Harvey D., Rutsch Wolfgang R., Vahanian Alec, Simoons Maarten L., et al. « Link Between the Angiographic Substudy and Mortality Outcomes in a Large Randomized Trial of Myocardial Reperfusion ». *Circulation* 91, n° 7 (1 avril 1995): 1923-28. <https://doi.org/10.1161/01.CIR.91.7.1923>.

3/ Cannon, Christopher P. « Relationship of Symptom-Onset-to-Balloon Time and Door-to-Balloon Time With Mortality in Patients Undergoing Angioplasty for Acute Myocardial Infarction ». *JAMA* 283, n° 22 (14 juin 2000): 2941. <https://doi.org/10.1001/jama.283.22.2941>.

4/De Luca Giuseppe, Suryapranata Harry, Ottervanger Jan Paul, et Antman Elliott M. « Time Delay to Treatment and Mortality in Primary Angioplasty for Acute Myocardial Infarction ». *Circulation* 109, n° 10 (16 mars 2004): 1223-25. <https://doi.org/10.1161/01.CIR.0000121424.76486.20>.

5/ Scholz, Karl Heinrich, Sebastian K G Maier, Lars S Maier, Björn Lengenfelder, Claudius Jacobshagen, Jens Jung, Claus Fleischmann, et al. « Impact of treatment delay on mortality in ST-segment elevation myocardial infarction (STEMI) patients presenting with and without haemodynamic instability: results from the German prospective, multicentre FITT-STEMI trial ». *European Heart Journal* 39, n° 13 (1 avril 2018): 1065-74. <https://doi.org/10.1093/eurheartj/ehy004>.

6/ Zijlstra, Felix, Menko Jan de Boer, Jan Hoorntje, Stoffer Reiffers, Johan Reiber, et Harry Suryapranata. « A Comparison of Immediate Coronary Angioplasty with Intravenous Streptokinase in Acute Myocardial Infarction ». *New England Journal of Medicine* 328, n° 10 (11 mars 1993): 680-84. <https://doi.org/10.1056/NEJM199303113281002>.

7/ Grines, Cindy L., Kevin F. Browne, Jean Marco, Donald Rothbaum, Gregg W. Stone, James O'Keefe, Paul Overlie, et al. « A Comparison of Immediate Angioplasty with Thrombolytic Therapy for Acute Myocardial Infarction ». *New England Journal of Medicine* 328, n° 10 (11 mars 1993): 673-79. <https://doi.org/10.1056/NEJM199303113281001>.

8/ « A Clinical Trial Comparing Primary Coronary Angioplasty with Tissue Plasminogen Activator for Acute Myocardial Infarction ». *New England Journal of Medicine* 336, n° 23 (5 juin 1997): 1621-28. <https://doi.org/10.1056/NEJM199706053362301>.

9/ Weaver, W. Douglas, R. John Simes, Amadeo Betriu, Cindy L. Grines, Felix Zijlstra, Eulogio Garcia, Lilliana Grinfeld, et al. « Comparison of Primary Coronary Angioplasty and Intravenous Thrombolytic Therapy for Acute Myocardial Infarction: A Quantitative Review ». *JAMA* 278, n° 23 (17 décembre 1997): 2093-98. <https://doi.org/10.1001/jama.1997.03550230069040>.

10/ Gibson, C. Michael. « Primary Angioplasty Compared with Thrombolysis: New Issues in the Era of Glycoprotein IIb/IIIa Inhibition and Intracoronary Stenting ». *Annals of Internal Medicine* 130, n° 10 (18 mai 1999): 841-47. <https://doi.org/10.7326/0003-4819-130-10-199905180-00019>.

11/ Borja Ibanez, Stefan James, Stefan Agewall, Manuel J Antunes, Chiara Bucciarelli-Ducci, Héctor Bueno et al « 2017 ESC Guidelines for the management of acute myocardial infarction in patients presenting with ST-segment elevation: The Task Force for the management of acute myocardial infarction in patients presenting with ST-segment elevation of the European Society of Cardiology (ESC) » *European Heart Journal*, Volume 39, Issue 2, 07 January 2018, Pages 119–177. <https://doi.org/10.1093/eurheartj/ehx393>.

12/ Wallentin, Lars, Richard C. Becker, Andrzej Budaj, Christopher P. Cannon, Håkan Emanuelsson, Claes Held, Jay Horrow, et al. « Ticagrelor versus Clopidogrel in Patients with Acute Coronary Syndromes ». *The New England Journal of Medicine* 361, n° 11 (10 septembre 2009): 1045-57. <https://doi.org/10.1056/NEJMoa0904327>.

13/ Wiviott, Stephen D., Elliott M. Antman, C. Michael Gibson, Gilles Montalescot, Jeffrey Riesmeyer, Govinda Weerakkody, Kenneth J. Winters, Jeffrey W. Warmke, Carolyn H. McCabe, et Eugene Braunwald. « Evaluation of Prasugrel Compared with Clopidogrel in Patients with Acute Coronary Syndromes: Design and Rationale for the TRial to Assess Improvement in Therapeutic Outcomes by Optimizing Platelet Inhibition with Prasugrel Thrombolysis In Myocardial Infarction 38 (TRITON-TIMI 38) ». *American Heart Journal* 152, n° 4 (1 octobre 2006): 627-35. <https://doi.org/10.1016/j.ahj.2006.04.012>.

14/ Harrington, Robert A., Gregg W. Stone, Steven McNulty, Harvey D. White, A. Michael Lincoff, C. Michael Gibson, Charles V. Pollack, et al. « Platelet Inhibition with Cangrelor in Patients Undergoing PCI ». *New England Journal of Medicine* 361, n° 24 (10 décembre 2009): 2318-29. <https://doi.org/10.1056/NEJMoa0908628>.

15/ Christian, Timothy F., James J. Milavetz, Todd D. Miller, Ian P. Clements, David R. Holmes, et Raymond J. Gibbons. « Prevalence of Spontaneous Reperfusion and Associated Myocardial Salvage in Patients with Acute Myocardial Infarction ». *American Heart Journal* 135, n° 3 (1 mars 1998): 421-27. [https://doi.org/10.1016/S0002-8703\(98\)70317-5](https://doi.org/10.1016/S0002-8703(98)70317-5).

16/ Uriel, Nir, Gil Moravsky, Alex Blatt, Arkadi Tourovski, Ziad Gabara, Yofik Inna, Vladimir Danicek, et al. « Acute Myocardial Infarction with Spontaneous Reperfusion: Clinical Characteristics and Optimal Timing for Revascularization ». *The Israel Medical Association Journal: IMAJ* 9, n° 4 (avril 2007): 243-46.

17/ Hackworthy, R. A., M. B. Vogel, et P. J. Harris. « Effect of Spontaneous Reperfusion on Myocardial Infarct Size ». *Clinical Cardiology* 10, n° 3 (1987): 168-74. <https://doi.org/10.1002/clc.4960100307>.

18/ Fefer Paul, Beigel Roy, Atar Shaul, Aronson Doron, Pollak Arthur, Zahger Doron, Asher Elad, et al. « Outcomes of Patients Presenting With Clinical Indices of Spontaneous Reperfusion in ST-Elevation Acute Coronary Syndrome Undergoing Deferred Angiography ». *Journal of the American Heart Association* 6, n° 7 (s. d.): e004552. <https://doi.org/10.1161/JAHA.116.004552>.

19/ Haider, A. W., F. Andreotti, D. R. Hackett, D. Tousoulis, C. Kluft, A. Maseri, et G. J. Davies. « Early Spontaneous Intermittent Myocardial Reperfusion during Acute Myocardial Infarction Is Associated with Augmented Thrombogenic Activity and Less Myocardial Damage ». *Journal of the American College of Cardiology* 26, n° 3 (septembre 1995): 662-67. [https://doi.org/10.1016/0735-1097\(95\)00210-U](https://doi.org/10.1016/0735-1097(95)00210-U).

20/ Lee, Cheol Whan, Myeong-Ki Hong, Jae-Hwan Lee, Hyun-Suk Yang, Jae-Joong Kim, Seong-Wook Park, et Seung-Jung Park. « Determinants and Prognostic Significance of Spontaneous Coronary Recanalization in Acute Myocardial Infarction ». *The American Journal of Cardiology* 87, n° 8 (15 avril 2001): 951-54. [https://doi.org/10.1016/S0002-9149\(01\)01427-8](https://doi.org/10.1016/S0002-9149(01)01427-8).

21/ Stone Gregg W., Cox David, Garcia Eulogio, Brodie Bruce R., Morice Marie-Claude, Griffin John, Mattos Luiz, Lansky Alexandra J., O'Neill William W., et Grines Cindy L. « Normal Flow (TIMI-3) Before Mechanical Reperfusion Therapy Is an Independent Determinant of Survival in Acute Myocardial Infarction ». *Circulation* 104, n° 6 (7 août 2001): 636-41. <https://doi.org/10.1161/hc3101.093701>.

22/ Ishihara, Masaharu, Ichiro Inoue, Takuji Kawagoe, Yuji Shimatani, Satoshi Kurisu, Kenji Nishioka, Takashi Umemura, Shuji Nakamura, et Masashi Yoshida. « Impact of Spontaneous Anterograde Flow of the Infarct Artery on Left Ventricular Function in Patients with a First Anterior Wall Acute Myocardial Infarction ». *American Journal of Cardiology* 90, n° 1 (1 juillet 2002): 5-9. [https://doi.org/10.1016/S0002-9149\(02\)02376-7](https://doi.org/10.1016/S0002-9149(02)02376-7).

23/ Rimar, D., E. Crystal, A. Battler, S. Gottlieb, D. Freimark, H. Hod, V. Boyko, L. Mandelzweig, S. Behar, et J. Leor. « Improved Prognosis of Patients Presenting with Clinical Markers of Spontaneous Reperfusion during Acute Myocardial Infarction ». *Heart* 88, n° 4 (1 octobre 2002): 352-56. <https://doi.org/10.1136/heart.88.4.352>.

24/ Fefer, Paul, Hanoch Hod, Haim Hammerman, Valentina Boyko, Shlomo Behar, et Shlomi Matetzky. « Relation of Clinically Defined Spontaneous Reperfusion to Outcome in ST-Elevation Myocardial Infarction ». *American Journal of Cardiology* 103, n° 2 (15 janvier 2009): 149-53. <https://doi.org/10.1016/j.amjcard.2008.08.050>.

25/ Li, Xiaoming, Boyu Li, Jing Gao, Yunfei Wang, Song Xue, Dachuan Jiang, Qi Hua, et Jing Li. « Influence of angiographic spontaneous coronary reperfusion on long-term prognosis in patients with ST-segment elevation myocardial infarction ». *Oncotarget* 8, n° 45 (18 juillet 2017): 79767-74. <https://doi.org/10.18632/oncotarget.19338>.

26/ Gilles Montalescot et al., "Prehospital Ticagrelor in ST-Segment Elevation Myocardial Infarction," *New England Journal of Medicine* 371, no. 11 (September 11, 2014): 1016–1027, accessed September 19, 2021, <http://www.nejm.org/doi/10.1056/NEJMoa1407024>.

27/Wang, Jian, et Song-yuan He. « Clinical and Angiographic Characteristics of Patients with Spontaneous Reperfusion in ST-Segment Elevation Myocardial Infarction ». *Medicine* 99, n° 10 (mars 2020): e19267. <https://doi.org/10.1097/MD.0000000000001926>



**Incidence, clinical characteristics, and prognosis of patients  
with ST-segment elevation myocardial infarction and  
spontaneous coronary reperfusion at admission in the modern  
antithrombotic strategy area.**

## Abbreviations

ACS = Acute coronary syndrome

BARC = bleeding academic research consensus

CK = creatine kinase

CRP = C-reactive protein

ECG = electrocardiogram

GFR = Glomerular filtration rate

GP = general practitioner

HF = heart failure

ICU = Intensive care unit

IQR = Interquartile range

LVEF = Left ventricular ejection fraction

PCI = percutaneous coronary intervention

STEMI = ST-segment elevation myocardial infarction

TIMI = thrombolysis in myocardial infarction

## **Introduction**

The rapid and complete restoration of coronary flow is a key issue in the management of ST-segment elevation myocardial infarction (STEMI) <sup>1-5</sup>. When possible, primary percutaneous coronary intervention (PCI) associated with antithrombotic drugs is the preferred reperfusion strategy <sup>6-11</sup>. In daily practice, some patients may achieve complete spontaneous reopening of the culprit artery at admission in the catheterization laboratory before undergoing any mechanical reperfusion therapy, which is called « spontaneous reperfusion » <sup>12, 13</sup>. The latter is defined as initial TIMI 3 flow (as classified by the Thrombolysis in Myocardial Infarction trial <sup>14</sup>) of the culprit coronary artery observed on diagnostic coronary angiography before PCI. Spontaneous reperfusion is associated with improved outcomes in several studies <sup>15-25</sup> but none of them was performed with the modern antithrombotic strategy including new P2Y<sub>12</sub> inhibitors (ticagrelor and prasugrel).

The objectives of this study was to report the incidence, clinical characteristics and prognostic impact of spontaneous coronary reperfusion of STEMI patients admitted for primary PCI using a modern medical antithrombotic strategy according to guidelines <sup>11</sup>.

## Methods

### Study design and population

This single centre, observational and prospective study was conducted between June 1<sup>st</sup> and November 1<sup>st</sup>, 2020 in the cardiology department of Montpellier University Hospital. All consecutive patients referred to the catheterization laboratory for primary PCI during the study period were screened. We included all patients with STEMI defined by the European Society of Cardiology and receiving, according to guidelines, preloading dose of aspirin, heparin and P2Y<sub>12</sub> inhibitor <sup>11, 27-29</sup>. Inclusion criteria included patients in the early phase of STEMI (pain lasting less 12 hours) or with evolved STEMI (pain lasting between 12 and 48 hours) with ongoing symptoms suggestive of ischaemia, including haemodynamic instability, or life-threatening arrhythmias.

Exclusion criteria included patients referred for coronary angiography after thrombolysis and myocardial infarction outside of acute phase as previously defined.

The study was approved by the local ethics committee (IRB ID 202100821) and was conducted in accordance with the 1964 Helsinki declaration and subsequent revisions. The study was registered on the clinical trial website (NCT 04881552).

### Pre-treatment

According to guidelines <sup>11</sup>, clopidogrel was usually reserved to contraindications of others P2Y<sub>12</sub> inhibitors (ticagrelor and prasugrel) related to bleeding risk including long-term anticoagulant therapy. Prasugrel wasn't used in our centre related to local prehospital emergency medical assistance service (*Service d'Aide Médicale Urgente*) protocol. Cangrelor was used when patients presenting vomiting after administration of ticagrelor or patients unable to absorb oral agents.

Regarding anticoagulation therapy, local habits were to use intravenous enoxaparin in first line, as allowed in guidelines <sup>11</sup>.

### Coronary angiography procedure

Coronary angiography was performed under local anaesthesia. Right radial approach was the default strategy, otherwise left radial or transfemoral access was used. Mechanical thrombectomy (ASAP aspiration catheter, Merit®) was performed for thrombotic burden lesions with indication left at the discretion of the interventional cardiologist. New generation drug-eluting stents (Orsiro, Biotronik®; Xience Sierra, Abbott®; Ultimaster Tansei, Terumo®; Resolute Onyx, Medtronic®) were implanted using a routine method.

Only the infarct-related artery (IRA) was treated during the initial intervention according to guidelines. In patients with multivessel disease, staged revascularization was performed usually before hospital discharge.

#### Data collection and follow up

In-hospital data were collected during the hospital stay for all patients. Data at one-year follow-up were obtained from medical records and by calling patient, general practitioner (GP) or cardiologist.

All the data were collected and analysed according to the CNIL MR-003 reference.

#### Study outcomes

The primary outcome was the incidence of initial spontaneous coronary TIMI flow grade 3 on emergency coronary angiography before primary PCI.

Secondary endpoints included:

- In-hospital clinical events including death, cardiogenic shock, cardiac arrest, ventricular arrhythmias, mechanical complications, heart failure (HF), myocardial reinfarction, stroke... and duration of hospitalization.
- In-hospital biological parameters related to infarct size including dosage of T-hs troponin, creatine kinase (CK), C-reactive protein (CRP).
- Echocardiographic evaluation before hospital discharge including at least left ventricular ejection fraction (LVEF).
- First year clinical events including death, re-hospitalization for cardiac reason (HF, ventricular arrhythmias, acute coronary syndrome), symptomatic angina, myocardial ischemia demonstrated on functional non-invasive tests, new coronary angiography or PCI, stroke and serious haemorrhagic event (BARC  $\geq$  3a).

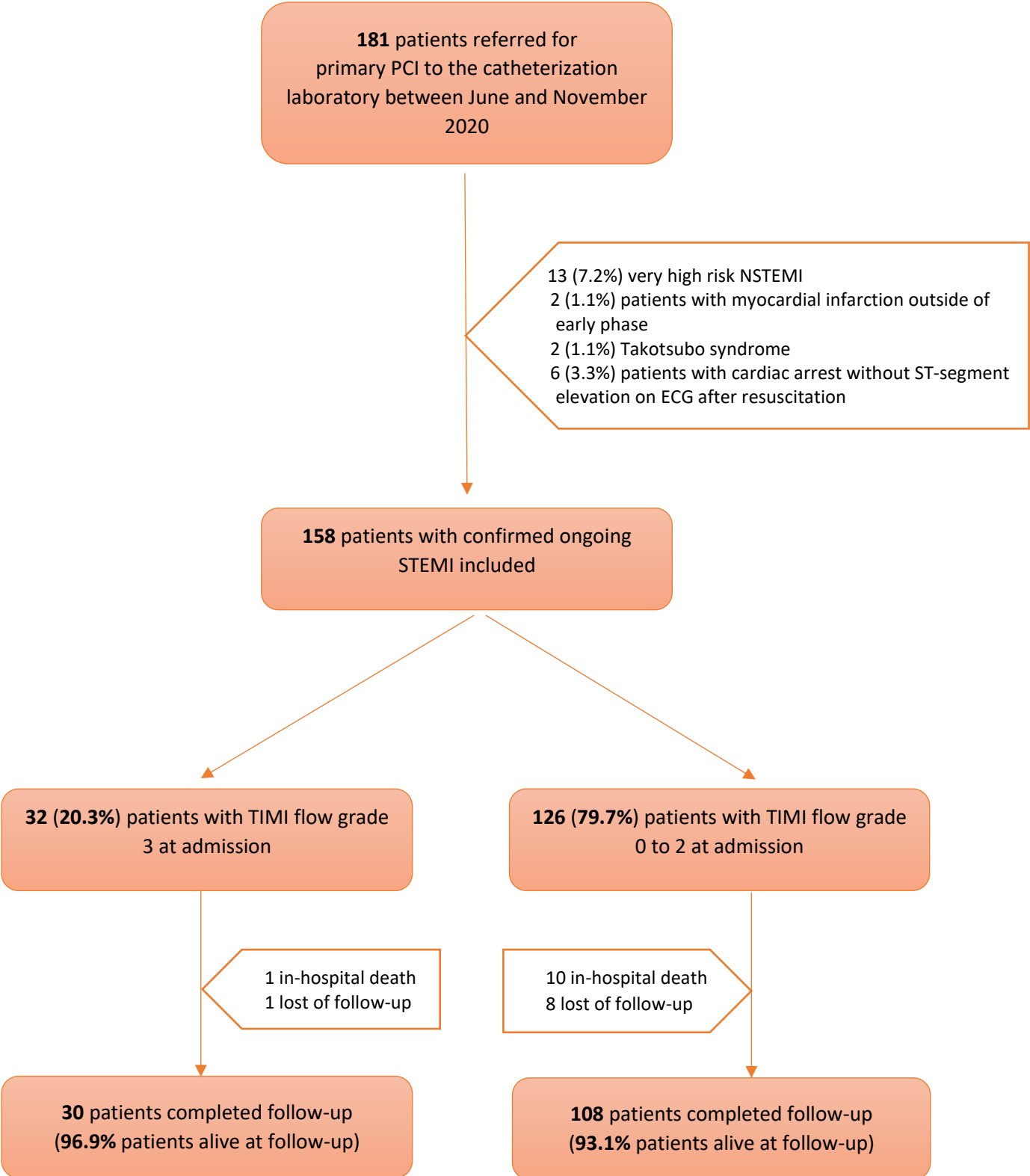
#### Statistical analysis

Categorical data are reported as counts and percentages. Continuous data are reported as mean  $\pm$  standard deviation for normally distributed data and as median (interquartile range) for non-normally distributed data. Comparisons used the chi-squared test or Fisher's exact test for categorical variables and Student's t test or the Mann-Whitney-Wilcoxon test, as appropriate, for continuous variables. A 2-tailed  $p < 0.05$  was considered statistically significant. Survival curves were constructed with the Kaplan-Meier method. All analyses were performed using SPSS statistics software, version 25 (IBM, Armonk, NY, USA).

**Results**

Study population

**Figure 1 – Study flowchart**



Among 181 STEMI patients referred in the catheterization laboratory for primary PCI during the study period, 158 (87.3%) patients with was confirmed to have ongoing STEMI and were included in the study ; 138 patients (93.9% of the living patients) completed 1-year follow-up (**Figure 1**). A total of 151 (95.6%) patients were admitted in the early-phase of STEMI and 7 (4.4%) patients presented evolved STEMI with ongoing symptoms suggestive of persistent ischaemia. Mean age was  $64 \pm 14$  years old and 123 were male (77.8 %). Regarding cardiovascular risk factors we observed mainly hypertension (n=61; 38.6%), active smoking (n=60; 38.0%), dyslipidaemia (n=52; 32.9%) and diabetes (n=33; 20.9%). Initial presentation was cardiac arrest for 16 patients (10.1%) and 133 patients (84.2%) received a pre-hospital loading dose of ticagrelor. Median delay between chest pain and reperfusion therapy was 210 minutes (IQR 25-75: 150-345) (**Table 1**).

### Primary endpoint

During the study period, 32 (20.3%) patients with confirmed ongoing STEMI presented angiographic evidence of spontaneous reperfusion (TIMI flow grade 3 on emergency coronary angiography before primary PCI). In this group, mean age was  $66 \pm 15$  years old and 24 were male (75.0 %). At baseline (prior the ACS), 7 patients (21.9%) were treated with anti-platelet therapy, 4 (12.5%) with anticoagulation therapy and 8 (25.0%) with beta-blockers and statins. 24 patients (75.0%) received a loading dose of ticagrelor and 7 (21.9%) were pre-treated with clopidogrel (**Table 1**).

### Secondary endpoints

- Baseline characteristics

Regarding population profile, there was significantly more patients with peripheral artery disease ( $p=0.03$ ) and without family history of coronary artery disease ( $p=0.04$ ) in the TIMI 3 group, diabetes ( $p=0.11$ ) tended to be more frequent in the TIMI 3 group compared to TIMI 0-2 group. The opposite trend is observed with hypertension ( $p=0.17$ ) which seems to be more frequent in the TIMI 0-2 group. Severe chronic kidney failure was significantly more frequent in the TIMI 3 population ( $p=0.04$ ) but only two patients were observed with this pathology. Patients tended to be more frequently treated with anticoagulation therapy ( $p=0.24$ ), clopidogrel ( $p=0.15$ ) and beta-blockers ( $p=0.12$ ) at baseline (prior the ACS) in the TIMI 3 group. Regarding STEMI characteristics, ST-elevation regression during transport was significantly more frequent in the TIMI 3 group ( $p<0.001$ ) (**Table 1**).

**Table 1** – Baseline characteristics of population and comparison between TIMI 3 and TIMI 0-2 at admission populations

	Overall population (n = 158)	TIMI 0 to 2 at admission (n = 126)	TIMI 3 at admission (n = 32)	<i>p</i>
<b>Demographics</b>				
Age (years), mean	64 (±14)	64 (± 14)	66 (± 15)	0.32
Male	123 (77.8%)	99 (78.6%)	24 (75.0%)	0.66
BMI (kg/m <sup>2</sup> ), median	26 (24-29)	26 (24-29)	26 (23-30)	0.19
<b>Cardiovascular risk factors</b>				
Hypertension	61 (38.6%)	52 (41.3%)	9 (28.1%)	0.17
Diabetes	33 (20.9%)	23 (18.3%)	10 (31.3%)	0.11
Dyslipidaemia	52 (32.9%)	43 (34.1%)	9 (28.1%)	0.52
Active smoking	60 (38.0%)	48 (38.1%)	12 (37.5%)	0.95
Family history of CAD	31 (19.7%)	29 (23.2%)	2 (6.3%)	0.04
<b>Comorbidities</b>				
Previous CAD	25 (15.8%)	21 (16.7%)	4 (12.5%)	0.79
Previous myocardial infarction	9 (5.8%)	8 (6.5%)	1 (3.1%)	0.69
Peripheral artery disease	4 (2.5%)	1 (0.8%)	3 (9.4%)	0.03
Stroke	5 (3.2%)	3 (2.4%)	2 (6.3%)	0.27
Atrial fibrillation	9 (5.7%)	6 (4.8%)	3 (9.4%)	0.39
<b>Chronic kidney failure</b>				
GFR <60 mL/min/1.73m <sup>2</sup>	11 (7.0%)	9 (7.1%)	2 (6.3%)	1.00
GFR ≤30 mL/min/1.73m <sup>2</sup>	2 (1.3%)	0 (0.0%)	2 (6.3%)	0.04
<b>Current treatment</b>				
<b>Anti-platelet therapy</b>				
Aspirin	28 (17.8%)	22 (17.6%)	6 (18.8%)	0.88
Clopidogrel	7 (4.5%)	4 (3.2%)	3 (9.4%)	0.15
Both	4 (2.5%)	2 (1.6%)	2 (6.3%)	0.18
<b>Anticoagulation therapy</b>				
Vitamin K antagonist	2 (1.3%)	1 (0.8%)	1 (3.1%)	0.37
Non-vitamin K antagonist oral anticoagulants	9 (5.7%)	6 (4.8%)	3 (9.4%)	0.39
<b>Beta-blockers</b>	25 (16.0%)	17 (13.7%)	8 (25.0%)	0.12



<b>Statins</b>	29 (18.5%)	21 (16.8%)	8 (25.0%)	0.29
<b>Presentation</b>				
<b>Preexisting angina pectoris</b>	42 (26.6%)	33 (26.2%)	9 (28.1%)	0.83
<b>Initial cardiac arrest</b>	16 (10.1%)	12 (9.5%)	4 (12.5%)	0.74
<b>Initial 3° atrioventricular block</b>	9 (5.7%)	7 (5.6%)	2 (6.3%)	1.00
<b>Initial ventricular tachycardia or fibrillation</b>	13 (8.2%)	10 (7.9%)	3 (9.4%)	0.73
<b>Localization of ST-segment elevation on ECG</b>				
Extensive anterior	23 (14.6%)	19 (15.1%)	4 (12.5%)	1.0
Anterior	48 (30.4%)	37 (29.4%)	11 (34.4%)	0.59
Inferior	69 (43.7%)	56 (44.4%)	13 (40.6%)	0.70
Posterior	6 (3.8%)	5 (4.0%)	1 (3.1%)	1.00
Lateral	12 (7.6%)	9 (7.1%)	3 (9.4%)	0.71
<b>ST-elevation regression during transport</b>	18 (11.5%)	7 (5.6%)	11 (35.5%)	<0.001
<b>Pre-treatment</b>				
<b>Loading dose of P2Y<sub>12</sub> inhibitor</b>				
Clopidogrel	19 (12.0%)	12 (9.5%)	7 (21.9%)	0.06
Ticagrelor	133 (84.2%)	109 (86.5%)	24 (75.0%)	0.11
Cangrelor	9 (6.4%)	8 (6.4%)	1 (3.1%)	1.00
<b>Enoxaparin</b>	150 (94.9%)	122 (96.8%)	28 (87.5%)	0.05
<b>Unfractionated heparin</b>	8 (5.1%)	4 (3.2%)	4 (12.5%)	0.05
<b>Delays (min), median</b>				
<b>Symptoms onset to primary PCI</b>	210 (150-345)	210 (150-346)	230 (148-338)	0.88
<b>Loading dose of P2Y<sub>12</sub> inhibitor to primary PCI</b>	95 (60-121)	98 (63-129)	90 (60-120)	0.63
<b>Initial laboratory tests</b>				
<b>Creatinine at admission (μmol/L), median</b>	81 (66-96)	82 (66-101)	78 (66-91)	0.44
<b>Hemoglobin at admission (g/dL), median</b>	14.4 (13.4-15.5)	14.4 (13.3-15.4)	14.5 (13.7-15.8)	0.37
<b>LDL- cholesterol (g/L)</b>	1.22 (0.97-1.46)	1.25 (1.0-1.5)	1.10 (0.90-1.57)	0.42
<b>HbA1C (%), median</b>	5.8 (5.5-6.2)	5.8 (5.5-6.1)	5.6 (5.5-6.4)	<b>0.07</b>

Values are mean (± DS), median (interquartile range) or n (%)

BMI = body mass index, CAD = coronary artery disease, GFR = glomerular filtration rate, PCI = percutaneous coronary intervention, LDL = low density lipoprotein, HbA1C = glycosylated haemoglobin

- Pre-treatment

TIMI 3 flow at admission tended to be more frequent in patients receiving pre-treatment with clopidogrel than in patients receiving pre-treatment with ticagrelor ( $p=0.06$ ) (**Table 2**).

**Table 2** – TIMI at admission according to P2Y<sub>12</sub> inhibitor loading dose

	Loading dose of	Loading dose of ticagrelor	<i>p</i>
<b>TIMI 0-2 at admission</b>	12 (63.2%)	109 (82.0%)	0.06
<b>TIMI 3 at admission</b>	7 (36.8%)	24 (18.0%)	0.06

Delay between symptoms onset to primary PCI was similar in the two groups with respectively 210 minutes (IQR 150-346) in TIMI 0-2 group and 230 minutes (IQR 148-338) in TIMI 3 group ( $p=0.88$ ). Delay between loading dose of P2Y<sub>12</sub> to primary PCI was not significantly different with respectively 98 minutes (IQR 63-129) in TIMI 0-2 group and 90 minutes (IQR 60-120) in TIMI 3 group ( $p=0.63$ ) (**Table 1**).

- Procedural characteristics

Thrombotic burden lesions tended to be more frequent in the TIMI 0-2 group ( $p=0.10$ ). Mechanical thrombectomy was significantly less used in the TIMI 3 group ( $p=0.02$ ). PCI with stent(s) was equally achieved in the two groups ( $p=0.88$ ).

There was no difference about localisation of the culprit lesion between the two groups, the culprit artery was mainly the left anterior descending artery in both groups (n=55; 43.7% in TIMI 0-2 group and n=16; 50.0% in the TIMI 3 group).

Time of radioscopy tended to be shortened in TIMI 3 group than in TIMI 0-2 group ( $p=0.19$ ). The same tendency was observed for X-ray dosimetry ( $p=0.20$ ) (**Table 3**).

**Table 3** – Procedural characteristics of population and comparison between TIMI 3 and TIMI 0 to 2 at admission populations

	Overall population (n = 158)	TIMI 0 to 2 at admission (n = 126)	TIMI 3 at admission (n = 32)	<i>p</i>
<b>Culprit artery</b>				
Left anterior descending artery	71 (44.9%)	55 (43.7%)	16 (50.0%)	0.52
Diagonal artery	9 (5.7%)	8 (6.3%)	1 (3.1%)	0.69
Circumflex artery	17 (10.8%)	14 (11.1%)	3 (9.4%)	1.00
Left obtuse marginal artery	6 (3.8%)	4 (3.2%)	2 (6.3%)	0.60
Right coronary artery	53 (33.5%)	43 (34.1%)	10 (31.3%)	0.76
Ramus intermedius artery	2 (1.3%)	2 (1.6%)	0 (0.0%)	1.00
<b>High thrombus burden lesion</b>	75 (47.5%)	64 (50.8%)	11 (34.4%)	0.10
<b>Multivessel disease</b>	90 (57.0%)	69 (54.8%)	21 (65.6%)	0.27
<b>Treatment during angiography</b>				
Mechanical thrombectomy	40 (25.5%)	37 (29.6%)	3 (9.4%)	0.02
Eptifibatide	49 (31.0%)	42 (33.3%)	7 (21.9%)	0.21
Isosorbide dinitrate	74 (47.4%)	61 (49.2%)	13 (40.6%)	0.43
Adenosine	9 (5.7%)	8 (6.4%)	1 (3.1%)	0.69
PCI with stent(s)	149 (94.3%)	119 (94.4%)	30 (93.8%)	0.88
<b>TIMI flow grade at the end of the procedure</b>				
TIMI 3	146 (92.4%)	115 (91.3%)	31 (96.9%)	0.46
TIMI 2	4 (2.5%)	4 (3.2%)	0 (0.0%)	0.58
TIMI 1	5 (3.2%)	4 (3.2%)	1 (3.1%)	1.00
TIMI 0	3 (1.9%)	3 (2.4%)	0 (0.0%)	1.00
<b>Contrast product used (mL), median</b>	150 (113-175)	150 (110-180)	138 (119-170)	0.65
<b>Time of radioscapy (min), median</b>	7.2 (5.9-11.6)	7.6 (6.0-12)	6.5 (4.0-10)	0.19
<b>X-ray dosimetry (cGy/cm<sup>2</sup>), median</b>	4792 (2722-7568)	5087 (2911-7742)	3324 (2072-5614)	<b>0.20</b>

- In-hospital evolution

At admission in ICU, all patients with TIMI 3 flow on initial angiography were Killip class I with a trend in favour of this group compared to the TIMI 0-2 group ( $p=0.07$ ). During hospitalisation, peaks of troponin and CK were significantly lower in the TIMI 3 ( $p<0.001$ ). Despite a trend towards a higher CRP peak observed in the TIMI 0-2 group, no significant difference was highlighted ( $p=0.07$ ).

In the TIMI 3 group, there was no ventricular arrhythmias, no conduction disorders and no cardiogenic shock during hospitalisation. Although there was no significant difference ( $p=0.46$ ), there was about twice in-hospital death in the TIMI 0-2 group than in TIMI 3 group with respectively 10 (7.9%) and 1 (3.1%) death in each group. Duration of hospitalisation was similar between the two groups (**Table 4**).

**Table 4** – In-hospital evolution of population and comparison between TIMI 3 and TIMI 0 to 2 at admission populations

	Overall population (n = 158)	TIMI 0 to 2 at admission (n = 126)	TIMI 3 at admission (n = 32)	<i>p</i>
<b>At admission in ICU</b>				
<b>Chest pain</b>	18 (11.4 %)	16 (12.7%)	2 (6.3%)	0.53
<b>Killip class</b>				
I	143 (90.5%)	111 (88.1%)	32 (100.0%)	0.07
II	5 (3.2%)	5 (4.0%)	0 (0.0%)	0.58
III	3 (1.9%)	3 (2.4%)	0 (0.0%)	1.00
IV	4 (2.5%)	4 (3.2%)	0 (0.0%)	0.58
<b>Electrocardiogram</b>				
Q wave	83 (53.9%)	69 (56.1%)	14 (45.2%)	0.28
Regression of ST-segment elevation	102 (66.2%)	80 (65.6%)	22 (68.8%)	0.74
<b>Echocardiographic characteristics</b>				
LVEF (%), median	50 (40-55)	50 (40-55)	50 (45-55)	0.36
Impaired LVEF	43 (27.2%)	36 (28.6%)	7 (21.9%)	0.42
Right ventricular dysfunction	16 (10.3%)	15 (12.1%)	1 (3.1%)	0.20
<b>Laboratory test</b>				
<b>Peak of troponin (ng/L)</b>	3063 (1541-6080)	3580 (1937-6320)	1498 (435-3061)	<0.001
<b>Peak of CK (UI/L)</b>	1144 (577-2381)	1438 (816-2646)	557 (259-1111)	<0.001
<b>Peak of CRP (mg/L)</b>	26.7 (8.8-73.4)	30.6 (10.7-83.5)	17 (5.2-55.4)	0.07
<b>Complications during hospitalization</b>				
<b>Ventricular arrhythmias</b>	5 (3.2%)	5 (4.0%)	0 (0.0%)	0.58
<b>Conduction disorders</b>	8 (5.1%)	8 (6.3%)	0 (0.0%)	0.36
<b>Cardiac arrest</b>	9 (5.7%)	8 (6.3%)	1 (3.1%)	0.69
<b>Congestive heart failure</b>	18 (11.4%)	13 (11.1%)	5 (15.6%)	0.37
<b>Cardiogenic shock</b>	7 (4.4%)	7 (5.6%)	0 (0.0%)	0.35
<b>Stroke</b>	2 (1.3%)	1 (0.8%)	1 (3.1%)	0.37
<b>Intraventricular thrombus</b>	2 (1.3%)	1 (0.8%)	1 (3.1%)	0.37

<b>Mechanical complications</b>	2 (1.3%)	1 (0.8%)	1 (3.1%)	0.37
Free wall rupture	2 (1.3%)	1 (0.8%)	1 (3.1%)	0.37
Ventricular septal defect	1 (0.6%)	0 (0.0%)	1 (3.1%)	0.20
<b>Stent thrombosis</b>	0 (0.0%)	0 (0.0%)	0 (0.0%)	1.00
<b>All cause in-hospital death</b>	11 (7.0%)	10 (7.9%)	1 (3.1%)	0.46
<b>Duration of hospitalization (days), median</b>	5 (4-8)	5 (4-8)	5 (4-8)	0.84

---

- Follow-up

Median duration of the follow up was 12 months (IQR 25-75: 10-13) and the longest follow up was 14 months. There were 9 patients (6.1% of patients alive at follow up) lost of follow-up in equivalent proportion in each group: 8 (6.9%) patients in the TIMI 0-2 group and 1 (3.2%) patients in the TIMI 3 group ( $p = 0.69$ ) (**Table 5**).

At one-year follow-up, a total of 16 (10.1%) patients died (**Figure 1**), respectively 13 (10.3%) patients in the TIMI 0-2 group and 3 (9.4%) in the TIMI 3 group with no significant difference between the two groups ( $p=1.00$ ) (**Table 5**). Survival was not different according to TIMI flow grade at admission (**Figure 2**).

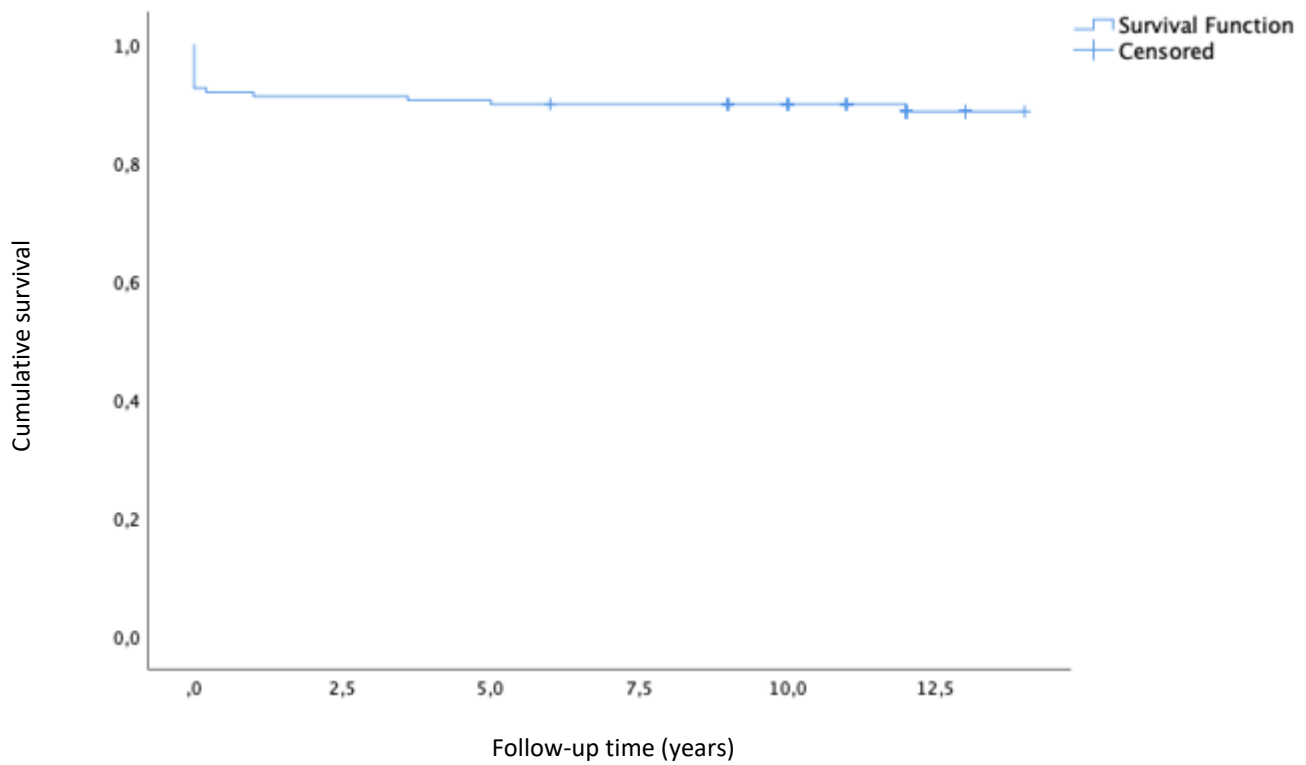
Regarding medical events, we observed 2 ACS (6.3%) and 1 stent thrombosis (3.1%) occurring in the TIMI 3 group during follow up period, while none of these events occurred in the TIMI 0-2 group. So, ACS and stent thrombosis during follow-up period tended to be more frequent in the TIMI 3 group (respectively,  $p=0.05$  and  $0.17$ ) (**Table 5**).

**Table 5 – Follow-up events of population and comparison between TIMI 3 and TIMI 0 to 2 at admission populations**

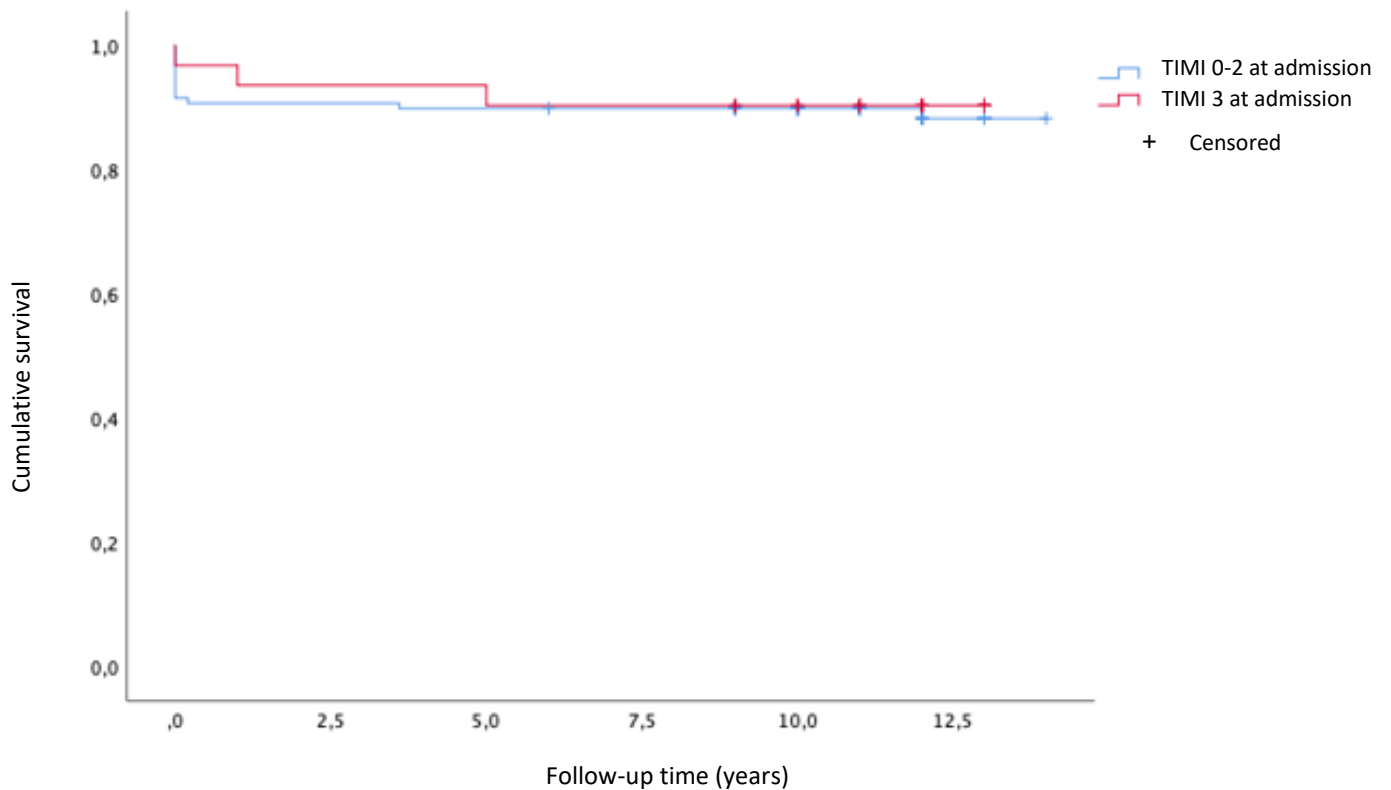
	<b>Overall population (n = 158)</b>	<b>TIMI 0 to 2 at admission (n = 126)</b>	<b>TIMI 3 at admission (n = 32)</b>	<b>p</b>
<b>Re-hospitalisation for cardiologic reason</b>	20 (12.7%)	15 (11.9%)	5 (15.7%)	0.44
<b>Angina pectoris</b>	4 (2.5%)	3 (2.4%)	1 (3.1%)	0.74
<b>Heart failure</b>	3 (1.9%)	3 (2.4%)	0 (0.0%)	0.48
<b>Acute coronary syndrome</b>	2 (1.3%)	0 (0.0%)	2 (6.3%)	0.05
<b>Myocardial ischemia demonstrated on functional non-invasive tests</b>	5 (3.2%)	4 (3.2%)	1 (3.1%)	1.00
<b>Coronary angiography</b>	11 (7.0%)	8 (6.3%)	3 (9.4%)	0.38
<b>Angioplasty</b>	4 (2.5%)	3 (2.4%)	1 (3.1%)	0.74
Same artery angioplasty	3 (1.9%)	2 (1.6%)	1 (3.1%)	0.69
<b>Stent thrombosis</b>	1 (0.6%)	0 (0.0%)	1 (3.1%)	0.17
<b>In-stent restenosis</b>	1 (0.6%)	1 (0.8%)	0 (0.0%)	0.66
<b>Stroke</b>	0 (0.0%)	0 (0.0%)	0 (0.0%)	1.00
<b>Serious haemorrhagic event</b>	2 (1.3%)	2 (1.6%)	0 (0.0%)	0.35
<b>All cause death at one year follow up</b> (excluding in-hospital death)	5 (3.2%)	3 (2.4%)	2 (6.3%)	0.40
<b>All cause death at one year follow up</b> (including in hospital death)	16 (10.1%)	13 (10.3%)	3 (9.4%)	1.00
<b>Follow up duration</b> (months)	12 (10-13)	12 (10-13)	12 (11-13)	0.37
<b>Lost of follow up</b> (% of patients alive at follow up)	9 (6.1%)	8 (6.9%)	1 (3.2%)	0.69



**Figure 2 – Survival curve of the total study population**



**Figure 3 – Survival curve according to TIMI flow grade at admission**



## Discussion

This study shows that about 20% of STEMI patients admitted for primary PCI after prehospital antithrombotic therapy have angiographic evidence of spontaneous reperfusion at admission in the catheterization laboratory.

No identified predictive factors of spontaneous reperfusion were highlighted including the use of new generation P2Y<sub>12</sub> inhibitors.

TIMI 3 flow at admission seems to be related to lower risk profile of STEMI regarding infarct size and in hospital events.

### TIMI 3 flow incidence at baseline angiography

Previous old studies have shown that the incidence of spontaneous reperfusion of STEMI admitted in the cath lab was about 15 to 30%<sup>12-13, 15-26</sup>. Only two studies evaluated this parameter were undergoing with use of P2Y<sub>12</sub> inhibitors: Wang et al.<sup>25</sup>, using clopidogrel as pre-treatment, observed 26% of TIMI 3 flow at admission in a retrospective study including 519 patients. Montalescot et al.<sup>26</sup>, in the prospective and randomized study ATLANTIC, compared as a secondary endpoint, the incidence of TIMI flow grade 3 at admission when ticagrelor was used in a pre- or in an in-hospital strategy. The study showed similar results in the two groups ( 17.4% VS 16.9%,  $p=0.82$ ). Our result regarding incidence of TIMI 3 flow, is consistent with these reports as with older studies that do not use loading dose of P2Y<sub>12</sub> inhibitors<sup>12-13, 15-24</sup>. No improvement of this important parameter is questionable if we consider improvement of the pre-treatment strategy of STEMI in the last twenty years. These results, even non-randomized, argue against beneficial effect of antithrombotic pre-treatment loading dose, even with new P2Y<sub>12</sub> inhibitors, on coronary reperfusion before PCI.

### Predictive factors of TIMI 3 flow at baseline angiography

- Patients characteristics

In our study, only peripheral artery disease or severe kidney disease were significantly associated with TIMI 3 flow at admission. These results would suggest that vascular history or previous antithrombotic therapy (all patients suffering of severe kidney disease and 75% of patients suffering of peripheral artery disease were treated by anti-platelet therapy at baseline), may impact TIMI 3 flow at admission. However, regarding low incidence of patients in this group, interpretation with caution is required. Wang et al.<sup>25</sup> showed that patients with spontaneous reperfusion were younger in age, with culprit lesions mostly

located in the distant left anterior descending artery. Younger age was also observed in another study<sup>23</sup> but another one<sup>21</sup> showed that patients with spontaneous reperfusion were slightly older. So, the relation between age and spontaneous reperfusion remains unclear. Two old studies<sup>18, 21</sup> found that pre infarction angina was associated with the occurrence of spontaneous reperfusion but we did not highlight a difference about this criterion in our study.

- Pre-treatment

Surprisingly in our study, pre-treatment with clopidogrel tends to be more frequently associated with TIMI 3 flow than ticagrelor. No study has compared clopidogrel and ticagrelor regarding TIMI 3 flow at admission in the cathlab in STEMI. In the clopidogrel group, more patients have anticoagulation therapy at baseline, this may have impact the TIMI 3 flow at admission but this association was not significant. This results, even non-randomized, support the hypothesis that the benefit of pre-hospital administration of new generation P2Y<sub>12</sub> inhibitors in STEMI is no related to improvement of coronary reperfusion before PCI.

- Coronary angiography

Two studies<sup>23, 25</sup> showed that culprit distal lesions or left anterior descending branch were independently associated with spontaneous reperfusion. In the present analysis, there was no difference about localisation of the culprit lesion between the two groups.

As previously observed in old studies<sup>18, 38</sup>, our study showed no significant difference between TIMI 3 flow at admission and the time interval between onset of pain and angiography. These results argue against an incidence of TIMI 3 flow that could be artificially increase with late delay of admission.

### Prognosis impact of spontaneous coronary reperfusion

Most of the reports<sup>15-25</sup>, performed before coming up of new P2Y<sub>12</sub> inhibitors, showed that patients with spontaneous reperfusion tended to have all the surrogates of improved myocardial salvage: less cardiac enzyme release, a higher left ventricular ejection fraction, fewer complications, and a better outcome than patients without spontaneous reperfusion. In our study, using mainly a modern strategy of pre-hospital treatment of new P2Y<sub>12</sub> inhibitors, this trend is confirmed: TIMI 3 flow at baseline angiography is clearly related with lower risk profile of STEMI. Thereby peaks of troponin and CK are significantly lower in the TIMI 3 group and we know that prognosis after acute myocardial infarction is strongly

determined by the extent of myocardial injury<sup>30-32</sup>. Several studies have evaluated troponin as a marker for infarct size and left ventricular dysfunction<sup>33-37</sup>. Of the same way, we observed a trend of less patients with impaired LVEF and right ventricular dysfunction in the TIMI 3 group. Interestingly we observed no ventricular arrhythmias, no conduction disorders and no cardiogenic shock during hospitalisation in the TIMI 3 group and, even no significant, there was about half as many in-hospital deaths in this group. Lastly, Killip class at admission was lower in the TIMI 3 group in accordance with previous studies<sup>18,19,21</sup>.

In our study, delays between symptom onset to primary PCI and between loading dose of P2Y<sub>12</sub> inhibitors to primary PCI were not significantly different between the two groups so the differences about in-hospital evolution identified are really due to spontaneous reperfusion and not to difference in delays of admission or delays of therapy.

Regarding one-year follow-up, no difference were highlighted in prognosis but we observed a trend to more ACS and stent thrombosis in the TIMI 3 group but the low number of events does not allow to interpret these results. The lack of difference in one-year mortality between the two groups is in accordance with previous study<sup>21</sup>, which showed that although spontaneous reperfusion was independently associated with improved survival at 30 days the association between spontaneous reperfusion and survival decreased at one year. But this is also to interpret with caution regarding low incidence of events in each group.

#### Study limitations

Our study has some limitations. Firstly, regarding the relatively small number of patients and events, the study lacks of power and interpretation of secondary endpoints must be done with caution. Secondly, the single centre design of study could also appear as a limitation. Considering the well-defined guidelines of STEMI pre-hospital therapy, excepted for prasugrel not usually used in our centre, no difference can be anticipated in the strategy of therapy in a multicentre study. However, our objective is to continue the study by using a multicentre design and a longer follow-up to better evaluate the profile of patients associated with TIMI 3 flow at admission and prognosis.

## **Conclusion**

This prospective study shows an incidence of about 20% of STEMI patients admitted for primary PCI, with angiographic evidence of spontaneous reperfusion. This incidence is the same as that observed in old studies despite the use of a modern medical pre-hospital antithrombotic strategy using loading dose of anti-platelet therapy and mainly new generation P2Y<sub>12</sub> inhibitors.

There is no identified baseline demographic characteristics clearly predicting spontaneous reperfusion, but TIMI 3 flow at admission is associated with lower risk profile of STEMI regarding clinical and biological parameters. While in-hospital outcome seems to be better in patients with spontaneous reperfusion, there is no difference regarding medical events between the two groups at one-year follow-up. Multicentre study with longer follow-up is planned to better evaluate prognostic impact and predictive factors of TIMI 3 flow at admission with the modern antithrombotic strategy.

## References

1/ Kleiman N S, White H D, Ohman E M, Ross A M, Woodlief L H, Califf R M, Holmes D R, Bates E, Pfisterer M, et Vahanian A. « Mortality within 24 hours of thrombolysis for myocardial infarction. The importance of early reperfusion. The GUSTO Investigators, Global Utilization of Streptokinase and Tissue Plasminogen Activator for Occluded Coronary Arteries. » *Circulation* 90, n° 6 (1 décembre 1994): 2658-65. <https://doi.org/10.1161/01.CIR.90.6.2658>.

2/ Simes R.J., Topol Eric J., Holmes David R., White Harvey D., Rutsch Wolfgang R., Vahanian Alec, Simoons Maarten L., et al. « Link Between the Angiographic Substudy and Mortality Outcomes in a Large Randomized Trial of Myocardial Reperfusion ». *Circulation* 91, n° 7 (1 avril 1995): 1923-28. <https://doi.org/10.1161/01.CIR.91.7.1923>.

3/ Cannon, Christopher P. « Relationship of Symptom-Onset-to-Balloon Time and Door-to-Balloon Time With Mortality in Patients Undergoing Angioplasty for Acute Myocardial Infarction ». *JAMA* 283, n° 22 (14 juin 2000): 2941. <https://doi.org/10.1001/jama.283.22.2941>.

4/De Luca Giuseppe, Suryapranata Harry, Ottervanger Jan Paul, et Antman Elliott M. « Time Delay to Treatment and Mortality in Primary Angioplasty for Acute Myocardial Infarction ». *Circulation* 109, n° 10 (16 mars 2004): 1223-25. <https://doi.org/10.1161/01.CIR.0000121424.76486.20>.

5/ Scholz, Karl Heinrich, Sebastian K G Maier, Lars S Maier, Björn Lengenfelder, Claudius Jacobshagen, Jens Jung, Claus Fleischmann, et al. « Impact of treatment delay on mortality in ST-segment elevation myocardial infarction (STEMI) patients presenting with and without haemodynamic instability: results from the German prospective, multicentre FITT-STEMI trial ». *European Heart Journal* 39, n° 13 (1 avril 2018): 1065-74. <https://doi.org/10.1093/eurheartj/ehy004>.

6/ Zijlstra, Felix, Menko Jan de Boer, Jan Hoorntje, Stoffer Reiffers, Johan Reiber, et Harry Suryapranata. « A Comparison of Immediate Coronary Angioplasty with Intravenous Streptokinase in Acute Myocardial Infarction ». *New England Journal of Medicine* 328, n° 10 (11 mars 1993): 680-84. <https://doi.org/10.1056/NEJM199303113281002>.

7/ Grines, Cindy L., Kevin F. Browne, Jean Marco, Donald Rothbaum, Gregg W. Stone, James O'Keefe, Paul Overlie, et al. « A Comparison of Immediate Angioplasty with Thrombolytic Therapy for Acute Myocardial Infarction ». *New England Journal of Medicine* 328, n° 10 (11 mars 1993): 673-79. <https://doi.org/10.1056/NEJM199303113281001>.

8/ « A Clinical Trial Comparing Primary Coronary Angioplasty with Tissue Plasminogen Activator for Acute Myocardial Infarction ». *New England Journal of Medicine* 336, n° 23 (5 juin 1997): 1621-28. <https://doi.org/10.1056/NEJM199706053362301>.

9/ Weaver, W. Douglas, R. John Simes, Amadeo Betriu, Cindy L. Grines, Felix Zijlstra, Eulogio Garcia, Lilliana Grinfeld, et al. « Comparison of Primary Coronary Angioplasty and Intravenous Thrombolytic Therapy for Acute Myocardial Infarction: A Quantitative Review ». *JAMA* 278, n° 23 (17 décembre 1997): 2093-98. <https://doi.org/10.1001/jama.1997.03550230069040>.

10/ Gibson, C. Michael. « Primary Angioplasty Compared with Thrombolysis: New Issues in the Era of Glycoprotein IIb/IIIa Inhibition and Intracoronary Stenting ». *Annals of Internal Medicine* 130, n° 10 (18 mai 1999): 841-47. <https://doi.org/10.7326/0003-4819-130-10-199905180-00019>.

11/ Borja Ibanez, Stefan James, Stefan Agewall, Manuel J Antunes, Chiara Bucciarelli-Ducci, Héctor Bueno et al « 2017 ESC Guidelines for the management of acute myocardial infarction in patients presenting with ST-segment elevation: The Task Force for the management of acute myocardial infarction in patients presenting with ST-segment elevation of the European Society of Cardiology (ESC) » *European Heart Journal*, Volume 39, Issue 2, 07 January 2018, Pages 119–177. <https://doi.org/10.1093/eurheartj/ehx393>

12/ Christian, Timothy F., James J. Milavetz, Todd D. Miller, Ian P. Clements, David R. Holmes, et Raymond J. Gibbons. « Prevalence of Spontaneous Reperfusion and Associated Myocardial Salvage in Patients with Acute Myocardial Infarction ». *American Heart Journal* 135, n° 3 (1 mars 1998): 421-27. [https://doi.org/10.1016/S0002-8703\(98\)70317-5](https://doi.org/10.1016/S0002-8703(98)70317-5).

13/ Uriel, Nir, Gil Moravsky, Alex Blatt, Arkadi Tourovski, Ziad Gabara, Yofik Inna, Vladimir Danicek, et al. « Acute Myocardial Infarction with Spontaneous Reperfusion: Clinical Characteristics and Optimal Timing for Revascularization ». *The Israel Medical Association Journal: IMAJ* 9, n° 4 (avril 2007): 243-46.

14/ “The Thrombolysis in Myocardial Infarction (TIMI) Trial,” *New England Journal of Medicine* 312, no. 14 (April 4, 1985): 932–936, <https://doi.org/10.1056/NEJM198504043121437>.

15/ Hackworthy, R. A., M. B. Vogel, et P. J. Harris. « Effect of Spontaneous Reperfusion on Myocardial Infarct Size ». *Clinical Cardiology* 10, n° 3 (1987): 168-74. <https://doi.org/10.1002/clc.4960100307>.

16/ Fefer Paul, Beigel Roy, Atar Shaul, Aronson Doron, Pollak Arthur, Zahger Doron, Asher Elad, et al. « Outcomes of Patients Presenting With Clinical Indices of Spontaneous Reperfusion in ST-Elevation Acute Coronary Syndrome Undergoing Deferred Angiography ». *Journal of the American Heart Association* 6, n° 7 (s. d.): e004552. <https://doi.org/10.1161/JAHA.116.004552>.

17/ Haider, A. W., F. Andreotti, D. R. Hackett, D. Tousoulis, C. Kluft, A. Maseri, et G. J. Davies. « Early Spontaneous Intermittent Myocardial Reperfusion during Acute Myocardial Infarction Is Associated with Augmented Thrombogenic Activity and Less Myocardial Damage ». *Journal of the American College of Cardiology* 26, n° 3 (septembre 1995): 662-67. [https://doi.org/10.1016/0735-1097\(95\)00210-U](https://doi.org/10.1016/0735-1097(95)00210-U).

18/ Lee, Cheol Whan, Myeong-Ki Hong, Jae-Hwan Lee, Hyun-Suk Yang, Jae-Joong Kim, Seong-Wook Park, et Seung-Jung Park. « Determinants and Prognostic Significance of Spontaneous Coronary Recanalization in Acute Myocardial Infarction ». *The American Journal of Cardiology* 87, n° 8 (15 avril 2001): 951-54. [https://doi.org/10.1016/S0002-9149\(01\)01427-8](https://doi.org/10.1016/S0002-9149(01)01427-8).

19/ Stone Gregg W., Cox David, Garcia Eulogio, Brodie Bruce R., Morice Marie-Claude, Griffin John, Mattos Luiz, Lansky Alexandra J., O'Neill William W., et Grines Cindy L. « Normal Flow (TIMI-3) Before Mechanical Reperfusion Therapy Is an Independent Determinant of Survival in Acute Myocardial Infarction ». *Circulation* 104, n° 6 (7 août 2001): 636-41. <https://doi.org/10.1161/hc3101.093701>.

20/ Ishihara, Masaharu, Ichiro Inoue, Takuji Kawagoe, Yuji Shimatani, Satoshi Kurisu, Kenji Nishioka, Takashi Umemura, Shuji Nakamura, et Masashi Yoshida. « Impact of Spontaneous Anterograde Flow of the Infarct Artery on Left Ventricular Function in Patients with a First Anterior Wall Acute Myocardial Infarction ». *American Journal of Cardiology* 90, n° 1 (1 juillet 2002): 5-9. [https://doi.org/10.1016/S0002-9149\(02\)02376-7](https://doi.org/10.1016/S0002-9149(02)02376-7).

21/ Rimar, D., E. Crystal, A. Battler, S. Gottlieb, D. Freimark, H. Hod, V. Boyko, L. Mandelzweig, S. Behar, et J. Leor. « Improved Prognosis of Patients Presenting with Clinical Markers of Spontaneous Reperfusion during Acute Myocardial Infarction ». *Heart* 88, n° 4 (1 octobre 2002): 352-56. <https://doi.org/10.1136/heart.88.4.352>.

22/ Fefer, Paul, Hanoch Hod, Haim Hammerman, Valentina Boyko, Shlomo Behar, et Shlomi Matetzky. « Relation of Clinically Defined Spontaneous Reperfusion to Outcome in ST-Elevation Myocardial Infarction ». *American Journal of Cardiology* 103, n° 2 (15 janvier 2009): 149-53. <https://doi.org/10.1016/j.amjcard.2008.08.050>.

23/ Li, Xiaoming, Boyu Li, Jing Gao, Yunfei Wang, Song Xue, Dachuan Jiang, Qi Hua, et Jing Li. « Influence of angiographic spontaneous coronary reperfusion on long-term prognosis in patients with ST-segment elevation myocardial infarction ». *Oncotarget* 8, n° 45 (18 juillet 2017): 79767-74. <https://doi.org/10.18632/oncotarget.19338>.

24/ Philippe Gabriel Steg et al., "Conservative Management of Patients with Acute Myocardial Infarction and Spontaneous Acute Patency of the Infarct-Related Artery," *American Heart Journal* 134, no. 2 (August 1, 1997): 248-252, accessed March 17, 2021, <https://www.sciencedirect.com/science/article/pii/S0002870397701315>.



25/ Wang, Jian, et Song-yuan He. « Clinical and Angiographic Characteristics of Patients with Spontaneous Reperfusion in ST-Segment Elevation Myocardial Infarction ». *Medicine* 99, n° 10 (mars 2020): e19267. <https://doi.org/10.1097/MD.0000000000001926>

26/ Gilles Montalescot et al., “Prehospital Ticagrelor in ST-Segment Elevation Myocardial Infarction,” *New England Journal of Medicine* 371, no. 11 (September 11, 2014): 1016–1027, <http://www.nejm.org/doi/10.1056/NEJMoa1407024>.

27/ Wallentin, Lars, Richard C. Becker, Andrzej Budaj, Christopher P. Cannon, Håkan Emanuelsson, Claes Held, Jay Horrow, et al. « Ticagrelor versus Clopidogrel in Patients with Acute Coronary Syndromes ». *The New England Journal of Medicine* 361, no 11 (10 septembre 2009): 1045 57. <https://doi.org/10.1056/NEJMoa0904327>.

28/ Wiviott, Stephen D., Elliott M. Antman, C. Michael Gibson, Gilles Montalescot, Jeffrey Riesmeyer, Govinda Weerakkody, Kenneth J. Winters, Jeffrey W. Warmke, Carolyn H. McCabe, et Eugene Braunwald. « Evaluation of Prasugrel Compared with Clopidogrel in Patients with Acute Coronary Syndromes: Design and Rationale for the TRial to Assess Improvement in Therapeutic Outcomes by Optimizing Platelet Inhibition with Prasugrel Thrombolysis In Myocardial Infarction 38 (TRITON-TIMI 38) ». *American Heart Journal* 152, no 4 (1 octobre 2006): 627 35. <https://doi.org/10.1016/j.ahj.2006.04.012>.

29/ Harrington, Robert A., Gregg W. Stone, Steven McNulty, Harvey D. White, A. Michael Lincoff, C. Michael Gibson, Charles V. Pollack, et al. « Platelet Inhibition with Cangrelor in Patients Undergoing PCI ». *New England Journal of Medicine* 361, no 24 (10 décembre 2009): 2318 29. <https://doi.org/10.1056/NEJMoa0908628>.

30/ “Risk Stratification and Survival after Myocardial Infarction,” *New England Journal of Medicine* 309, no. 6 (August 11, 1983): 331–336, accessed September 19, 2021, <https://doi.org/10.1056/NEJM198308113090602>.

31/ Xiaoxiao Zhao et al., “Association between Variation of Troponin and Prognosis of Acute Myocardial Infarction before and after Primary Percutaneous Coronary Intervention,” *Journal of Interventional Cardiology* 2020 (July 25, 2020): 4793178, accessed September 19, 2021, <https://www.ncbi.nlm.nih.gov/pmc/articles/PMC7399759/>.

32/ Shlomo Matetzky et al., “Elevated Troponin I Level on Admission Is Associated With Adverse Outcome of Primary Angioplasty in Acute Myocardial Infarction,” *Circulation* 102, no. 14 (October 3, 2000): 1611–1616, accessed September 19, 2021, <https://www.ahajournals.org/doi/10.1161/01.cir.102.14.1611>.

33/ Mauro Panteghini et al., “Measurement of Troponin I 48h after Admission as a Tool to Rule out Impaired Left Ventricular Function in Patients with a First Myocardial Infarction,” *Clinical Chemistry and Laboratory Medicine (CCLM)* 43, no. 8 (August 1, 2005): 848–854, accessed September 19, 2021, <https://www.degruyter.com/document/doi/10.1515/CCLM.2005.143/html>.

34/ Evangelos Giannitsis et al., "Cardiac Magnetic Resonance Imaging Study for Quantification of Infarct Size Comparing Directly Serial Versus Single Time-Point Measurements of Cardiac Troponin T," *Journal of the American College of Cardiology* 51, no. 3 (January 22, 2008): 307–314, accessed September 19, 2021, <https://www.sciencedirect.com/science/article/pii/S0735109707034420>.

35/ A. C. R. Rao et al., "Troponin T Measurement after Myocardial Infarction Can Identify Left Ventricular Ejection of Less than 40%," *Heart* 80, no. 3 (September 1, 1998): 223–225, accessed September 19, 2021, <https://heart.bmj.com/content/80/3/223>.

36/ John F Younger et al., "Troponin-I Concentration 72 h after Myocardial Infarction Correlates with Infarct Size and Presence of Microvascular Obstruction," *Heart* 93, no. 12 (December 2007): 1547–1551, accessed September 19, 2021, <https://www.ncbi.nlm.nih.gov/pmc/articles/PMC2095742/>.

37/ M. Licka et al., "Troponin T Concentrations 72 Hours after Myocardial Infarction as a Serological Estimate of Infarct Size," *Heart* 87, no. 6 (June 1, 2002): 520–524, accessed September 19, 2021, <https://heart.bmj.com/content/87/6/520>.

38/ K P Rentrop et al., "Serial Angiographic Assessment of Coronary Artery Obstruction and Collateral Flow in Acute Myocardial Infarction. Report from the Second Mount Sinai-New York University Reperfusion Trial," *Circulation* 80, no. 5 (1989): 1166–1175, accessed September 28, 2021, <https://www.ahajournals.org/doi/10.1161/01.CIR.80.5.1166>.

## Appendix

### Appendix 1 – TIMI (Thrombolysis in Myocardial Infarction) classification

**TIMI 0** refers to the absence of any antegrade flow beyond a coronary occlusion.

**TIMI 1** flow is faint antegrade coronary flow beyond the occlusion, although filling of the distal coronary bed is incomplete.

**TIMI 2** flow is delayed or sluggish antegrade flow with complete filling of the distal territory.

**TIMI 3** flow is normal flow, which fills the distal coronary bed completely.

## Appendix 2 – BARC (Bleeding Academic Research Consensus) classification

Type	Definition of BARC Bleeding (Primary Endpoint)
0	No evidence of bleeding.
1	Bleeding that is not actionable.
2	Any clinically overt sign of hemorrhage that is actionable, but does not meet criteria for type 3, 4, or 5 bleeding. It must meet at least one of the following criteria: <ul style="list-style-type: none"> <li>• Requiring medical or percutaneous intervention guided by a healthcare professional</li> <li>• Leading to hospitalization or an increased level of care</li> <li>• Prompting evaluation (laboratory or imaging)</li> </ul>
3	Clinical, laboratory, and/or imaging evidence of bleeding with healthcare responses, as listed below:
3a	<ul style="list-style-type: none"> <li>• Any transfusion with overt bleeding</li> <li>• Overt bleeding plus hemoglobin (Hb) drop <math>\geq 3</math> to <math>&lt; 5</math> g/dl (provided Hb drop is related to bleeding)</li> </ul>
3b	<ul style="list-style-type: none"> <li>• Overt bleeding plus Hb drop <math>\geq 5</math> g/dl</li> <li>• Cardiac tamponade</li> <li>• Bleeding requiring surgical intervention for control</li> <li>• Bleeding requiring intravenous vasoactive drugs</li> </ul>
3c	<ul style="list-style-type: none"> <li>• Intracranial hemorrhage</li> <li>• Intraocular bleed compromising vision</li> </ul>
4	CABG-related bleeding <ul style="list-style-type: none"> <li>• Perioperative intracranial bleeding within 48 hours</li> <li>• Reoperation following closure of sternotomy for the purpose of controlling bleeding</li> <li>• Transfusion of <math>\geq 5</math> units of whole blood or packed red blood cells within a 48-hour period</li> <li>• Chest tube output <math>\geq 2</math> l within a 24-hour period</li> </ul>
5	Fatal bleeding. Bleeding directly causes death with no other explainable cause. Categorized further as either definite or probable:
5a	Probable fatal bleeding that is clinically suspicious as the cause of death, but the bleeding is not directly observed
5b	Definite fatal bleeding that is directly observed.

## Annexes

### Annexe 1 – Classification TIMI du flux coronaire

Type	Caractéristiques du flux
<b>TIMI 0</b>	Absence complète de flux au-delà de l'obstruction.
<b>TIMI 1</b>	Passage du produit de contraste au-delà de la sténose sans opacification complète du lit d'aval.
<b>TIMI 2</b>	Passage du produit de contraste au-delà de la sténose. Opacification complète du lit d'aval. Vitesse de lavage ralentie.
<b>TIMI 3</b>	Passage du produit de contraste au-delà de la sténose. Opacification complète du lit d'aval. Vitesse de lavage non ralentie.

## Annexe 2 – Classification BARC (Bleeding Academic Research Consensus)

<b>BARC 0</b>	pas de saignement.
<b>BARC 1</b>	saignement qui ne modifie pas la prise en charge médicale et sur lequel aucune action médicale n'est entreprise ; peut induire des épisodes d'arrêts de la thérapie par le patient sans consultation d'un professionnel de santé.
<b>BARC 2</b>	saignement extériorisé qui a l'une des trois caractéristiques suivantes : il entraîne un traitement non chirurgical, il conduit à une hospitalisation ou à une évaluation médicale.
<b>BARC 3</b>	saignements plus sévères. Il existe trois sous catégories de BARC 3
<b>Type 3a</b>	saignement extériorisé avec chute de l'hémoglobine de 3 à 5 points (g/dL) ou une transfusion accompagnée d'un saignement extériorisé quel que soit le degré et l'importance de la transfusion.
<b>Type 3b :</b>	saignement extériorisé avec une chute de l'hémoglobine d'au moins 5 points, ou une tamponnade ou un saignement qui nécessite une hémostase chirurgicale (exclue les dents, la peau, le nez, les hémorroïdes), ou un saignement qui nécessite l'utilisation d'amine vasoconstrictrice intraveineuse.
<b>Type 3c</b>	hémorragie intracrânienne ou intraoculaire qui affecte la vision.
<b>BARC 4</b>	saignements péripontage aorto-coronaires. Saignement intracrânien dans les 48 heures, ré-intervention dans le but de contrôler l'hémorragie, transfusion d'au moins 5 unités de sang total ou de concentré de globules rouges dans les 48 heures, drainage thoracique d'au moins 2 litres dans les 24 heures.
<b>BARC 5</b>	saignements mortels.
<b>Type 5a</b>	saignement mortel probable, absence d'autopsie ou de confirmation par imagerie mais suspicion clinique
<b>Type 5b</b>	saignement mortel confirmé par autopsie ou imagerie

Annexe 3 – Protocole du SAMU 34 concernant les SCA ST+

**SAMU 34 - SMUR MONTPELLIER - LUNEL**

SCA ST+, ANGIOPLASTIE PRIMAIRE

**Délai ECG qualifiant - Transport < 120 minutes**

① HBPM (Enoxaparine = Lovenox® : 0,5 mg/kg IV)  
ou HNF : 5000 UI IV  
+ ② Aspirine 250 mg IV

*Si absence de contre-indication (\*)*  
+ ③ Ticagrelor  
**BRILIQUE® 180 mg**  
2 comprimés 90 mg ORO dispersibles  
**sur la langue ou dilués dans SNG**

(\*) Contre-indications Ticagrelor

- Traitement par AVK
- Traitement par NACO (Dabigatran = Pradaxa®, Rivaroxaban=Xarelto®, Apixaban=Eliquis®)
- Risque hémorragique élevé
- ATCD Hémorragie intracrânienne / AVC ischémique
- Insuffisance Hépatique sévère
- Hémodialysé
- Allergie Ticagrelor

Si contre-indications Ticagrelor

+ ③ Clopidogrel  
**PLAVIX® 600 mg**  
2 comprimés 300 mg PO



**THÉRAPEUTIQUES ASSOCIÉES**

- ④ Morphine titrée si EN  $\geq$  6  
⑤ Oxygénothérapie si SpO<sub>2</sub> < 90 %



JANVIER 2018

## SERMENT

*En présence des Maîtres de cette école, de mes chers condisciples et devant l'effigie d'Hippocrate, je promets et je jure, au nom de l'Être suprême, d'être fidèle aux lois de l'honneur et de la probité dans l'exercice de la médecine.*

*Je donnerai mes soins gratuits à l'indigent et n'exigerai jamais un salaire au-dessus de mon travail.*

*Admis (e) dans l'intérieur des maisons, mes yeux ne verront pas ce qui s'y passe, ma langue taira les secrets qui me seront confiés, et mon état ne servira pas à corrompre les mœurs, ni à favoriser le crime.*

*Respectueux (se) et reconnaissant (e) envers mes Maîtres, je rendrai à leurs enfants l'instruction que j'ai reçue de leurs pères.*

*Que les hommes m'accordent leur estime si je suis fidèle à mes promesses. Que je sois couvert (e) d'opprobre et méprisé (e) de mes confrères si j'y manque.*



## RESUME

**Introduction :** La restauration précoce du flux coronaire est l'objectif principal de la prise en charge du syndrome coronarien aigu avec sus-décalage du segment ST (SCA ST+). En parallèle du traitement pharmacologique administré en pré-hospitalier, l'angioplastie primaire est actuellement le traitement de référence à la phase aiguë. Dans les études à notre disposition, dont une seule réalisée depuis l'avènement des nouveaux inhibiteurs du P2Y<sub>12</sub>, une reperfusion coronaire complète avant tout geste endovasculaire est observée chez 15 à 30 % des patients. De nombreuses études ont montré que cette dernière constitue un facteur de bon pronostic indépendant, cependant aucune d'entre elle n'a été réalisée avec l'utilisation des nouvelles molécules anti-thrombotiques.

**Objectifs :** Déterminer l'incidence des patients se présentant pour un SCA ST+ avec reperfusion coronaire spontanée à l'arrivée en salle de coronarographie à l'ère des nouvelles stratégies anti-thrombotiques (objectif principal). Définir les caractéristiques des patients qui présentent une reperfusion coronaire spontanée et déterminer l'impact de cette dernière sur le pronostic intra-hospitalier puis à un an (objectifs secondaires).

**Matériel et méthodes :** Etude monocentrique, prospective incluant tous les patients admis pour SCA ST+ en salle de coronarographie au CHU de Montpellier du 1<sup>er</sup> juin au 1<sup>er</sup> novembre 2020. Le critère de jugement principal était la constatation d'un flux TIMI 3 lors de la coronarographie réalisée en urgence.

**Résultats :** 158 patients ont été inclus. Parmi eux, 32 (20,3%) présentaient une reperfusion coronaire complète à l'arrivée en salle de coronarographie. Les délais de revascularisation étaient identiques dans les deux groupes (TIMI 0-2 VS TIMI 3 à l'admission). Les pics de troponine et de CK étaient significativement plus bas dans le groupe TIMI 3 ( $p < 0,001$ ). Les patients du groupe TIMI 3 présentaient moins d'insuffisance cardiaque ( $p = 0,37$ ) et aucun d'entre eux n'a présenté de choc cardiogénique ( $p = 0,35$ ). Deux fois moins de décès ont eu lieu durant l'hospitalisation dans le groupe TIMI 3 ( $p = 0,46$ ). La durée médiane de suivi était de 12 mois. La mortalité à un an était comparable dans les deux groupes ( $p = 1,00$ ).

**Conclusion :** L'incidence de la reperfusion coronaire spontanée de 20% dans notre étude est stable par rapport aux données plus anciennes, malgré l'avènement de nouvelles molécules anti-thrombotiques. Aucun facteur prédictif de reperfusion spontanée n'a été mis en avant dans cette étude notamment l'utilisation du ticagrelor comparé au clopidogrel. Ce paramètre apparaît comme un facteur pronostique intra-hospitalier à délai de reperfusion identique. En revanche à un an, aucune différence pronostique entre les deux groupes n'a été mise en évidence. Un suivi à plus long terme et l'inclusion d'un plus grand nombre de patients sont envisagés.

**Mots-clés :** Syndrome coronarien aigu, reperfusion spontanée, coronarographie, TIMI, incidence, pronostic, ticagrelor, clopidogrel