



HAL
open science

Immunohistochemical expression of DNAJB9 in IgG4-related disease

Emily Stuchfield-Denby

► **To cite this version:**

Emily Stuchfield-Denby. Immunohistochemical expression of DNAJB9 in IgG4-related disease. Human health and pathology. 2022. dumas-03945194

HAL Id: dumas-03945194

<https://dumas.ccsd.cnrs.fr/dumas-03945194v1>

Submitted on 18 Jan 2023

HAL is a multi-disciplinary open access archive for the deposit and dissemination of scientific research documents, whether they are published or not. The documents may come from teaching and research institutions in France or abroad, or from public or private research centers.

L'archive ouverte pluridisciplinaire **HAL**, est destinée au dépôt et à la diffusion de documents scientifiques de niveau recherche, publiés ou non, émanant des établissements d'enseignement et de recherche français ou étrangers, des laboratoires publics ou privés.

UNIVERSITÉ CLERMONT AUVERGNE
UFR DE MÉDECINE ET DES PROFESSIONS PARAMÉDICALES

THÈSE D'EXERCICE

pour le

DIPLÔME D'ÉTAT DE DOCTEUR EN MÉDECINE

par

Emily STUCHFIELD-DENBY

Présentée et soutenue publiquement le 6 octobre 2022

Immunohistochemical expression of DNAJB9 in IgG4-related disease

Directeur de thèse :

Monsieur RUIVARD Marc, Professeur, UFR de Médecine et des Professions Paramédicales, Médecine Interne, Hôpital Estaing, CHU de Clermont-Ferrand

Président du jury :

Monsieur ANDRE Marc, Professeur, UFR de Médecine et des Professions Paramédicales, Médecine Interne, Hôpital Gabriel Montpied, CHU de Clermont-Ferrand

Membres du jury :

Monsieur SCHLEINITZ Nicolas, Professeur, Faculté des Sciences Médicales et Paramédicales, Médecine Interne, Hôpital Universitaire La Timone, Assistance Publique – Hôpitaux de Marseille

Madame GODFRAIND Catherine, Professeur, UFR de Médecine et des Professions Paramédicales, Anatomie et Cytologie Pathologiques, Hôpital Gabriel Montpied, CHU de Clermont-Ferrand

Monsieur GROBOST Vincent, Docteur, Praticien Hospitalier, Médecine Interne, Hôpital Estaing, CHU de Clermont-Ferrand

UNIVERSITÉ CLERMONT AUVERGNE
UFR DE MÉDECINE ET DES PROFESSIONS PARAMÉDICALES

THÈSE D'EXERCICE
pour le
DIPLOME D'ÉTAT DE DOCTEUR EN MÉDECINE
par

Emily STUCHFIELD-DENBY

Présentée et soutenue publiquement le 6 octobre 2022

Immunohistochemical expression of DNAJB9 in IgG4-related disease

Directeur de thèse :

Monsieur RUIVARD Marc, Professeur, UFR de Médecine et des Professions Paramédicales, Médecine Interne, Hôpital Estaing, CHU de Clermont-Ferrand

Président du jury :

Monsieur ANDRE Marc, Professeur, UFR de Médecine et des Professions Paramédicales, Médecine Interne, Hôpital Gabriel Montpied, CHU de Clermont-Ferrand

Membres du jury :

Monsieur SCHLEINITZ Nicolas, Professeur, Faculté des Sciences Médicales et Paramédicales, Médecine Interne, Hôpital Universitaire La Timone, Assistance Publique – Hôpitaux de Marseille

Madame GODFRAIND Catherine, Professeur, UFR de Médecine et des Professions Paramédicales, Anatomie et Cytologie Pathologiques, Hôpital Gabriel Montpied, CHU de Clermont-Ferrand

Monsieur GROBOST Vincent, Docteur, Praticien Hospitalier, Médecine Interne, Hôpital Estaing, CHU de Clermont-Ferrand

UNIVERSITE CLERMONT AUVERGNE

PRESIDENTS HONORAIRES
UNIVERSITE D'AUVERGNE

: **JOYON** Louis
: **DOLY** Michel
: **TURPIN** Dominique
: **VEYRE** Annie
: **DULBECCO** Philippe
: **ESCHALIER** Alain

PRESIDENTS HONORAIRES
UNIVERSITE BLAISE PASCAL

: **CABANES** Pierre
: **FONTAINE** Jacques
: **BOUTIN** Christian
: **MONTEIL** Jean-Marc
: **ODOUARD** Albert
: **LAVIGNOTTE** Nadine

PRESIDENT DE L'UNIVERSITE
PREMIERE VICE-PRESIDENTE
CHARGEE DU PILOTAGE ET DES MOYENS
VICE PRESIDENTE CHARGEE DE LA FORMATION
VICE-PRESIDENTE CHARGEE DE LA RECHERCHE
DIRECTEUR GENERAL DES SERVICES

: **BERNARD** Mathias

: **FOGLI** Anne
: **PEYRARD** Françoise
: **PREVOT** Vanessa
: **PAQUIS** François



UFR DE MEDECINE ET DES PROFESSIONS PARAMEDICALES

DOYENS HONORAIRES

: **DETEIX** Patrice
: **HAZAL** Jean

DOYEN
RESPONSABLE ADMINISTRATIVE

: **CLAVELOU** Pierre
: **ROBERT** Gaëlle

LISTE DU PERSONNEL ENSEIGNANT

PROFESSEURS HONORAIRES :

MM. BACIN Franck - BEGUE René-Jean - BEYTOUT Jean - BOIRE Jean-Yves - BOITEUX Jean-Paul - BOMMELAER Gilles - BOUCHER Daniel - BUSSIÈRE Jean-Louis - CANO Noël - CASSAGNES Jean - CATILINA Pierre - CHABANNES Jacques - CHAMOUX Alain - CHAZAL Jean - CHIPPONI Jacques - CHOLLET Philippe - CITRON Bernard - CLEMENT Gilles - COUDERT Jean - DASTUGUE Bernard - DAUPLAT Jacques - DECHELOTTE Pierre - DEMEOCQ François - DE RIBEROLLES Charles - DETEIX Patrice - ESCANDE Georges - Mme FONCK Yvette - M. GENTOU Claude - Mme GLANDDIER Phyllis - MM. IRTIUM Bernard - JACQUETIN Bernard - Mme LAVARENNE Jeanine - MM. LAVERAN Henri - LESOURD Bruno - LEVAI Jean-Paul - MAGE Gérard - MICHEL Jean-Luc - MONDIE Jean-Michel - PHILIPPE Pierre - PLAGNE Robert - PLANCHE Roger - PONSONNAILLE Jean - REY Michel - Mme RIGAL Danièle - MM. ROZAN Raymond - SCHOEFFLER Pierre - SIROT Jacques - RIBAL Jean-Pierre - SOUTEYRAND Pierre - TANGUY Alain - TERVER Sylvain - THIEBLOT Philippe - TOURNILHAC Michel - VANNEUVILLE Guy - VIALLET Jean-François - Mme VEYRE Annie

PROFESSEURS EMERITES :

MM. AUMAITRE Olivier - AVAN Paul - BAZIN Jean-Etienne - CAILLAUD Denis - DAPOIGNY Michel - DUBRAY Claude - ESCHALIER Alain - KEMENY Jean-Louis - LABBE André - Mme LAFEUILLE Hélène - MM. LEMERY Didier - LUSSON Jean-René - POULY Jean-Luc

PROFESSEURS DES UNIVERSITES-PRATICIENS HOSPITALIERS

CLASSE EXCEPTIONNELLE

M. VAGO Philippe	Histologie-Embryologie Cytogénétique
M. DURIF Franck	Neurologie
M. BOYER Louis	Radiologie et Imagerie Médicale option Clinique
M. CANIS Michel	Gynécologie-Obstétrique
Mme PENAULT-LLORCA Frédérique	Anatomie et Cytologie Pathologiques
M. BIGNON Yves Jean	Cancérologie option Biologique
M. BOIRIE Yves	Nutrition Humaine
M. CLAVELOU Pierre	Neurologie
M. GILAIN Laurent	O.R.L.
M. LEMAIRE Jean-Jacques	Neurochirurgie
M. CAMILLERI Lionel	Chirurgie Thoracique et Cardio-Vasculaire
M. LLORCA Pierre-Michel	Psychiatrie d'Adultes
M. PEZET Denis	Chirurgie Digestive
M. SOUWEINE Bertrand	Réanimation Médicale
M. BOISGARD Stéphane	Chirurgie Orthopédique et Traumatologie
Mme DUCLOS Martine	Physiologie

M.	SCHMIDT Jeannot	Médecine d'Urgence
M.	BERGER Marc	Hématologie
M.	GARCIER Jean-Marc	Anatomie-Radiologie et Imagerie Médicale
M.	ROSSET Eugénio	Chirurgie Vasculaire
M.	SOUBRIER Martin	Rhumatologie
M.	ABERGEL Armando	Hépatologie
Mme	BARTHELEMY Isabelle	Chirurgie Maxillo-Faciale
M.	RUIVARD Marc	Médecine Interne

1ère CLASSE

M.	VERRELLE Pierre	Radiothérapie option Clinique
M.	D'INCAN Michel	Dermatologie -Vénérologie
Mme	JALENQUES Isabelle	Psychiatrie d'Adultes
M.	GERBAUD Laurent	Epidémiologie, Economie de la Santé et Prévention
M.	TAUVERON Igor	Endocrinologie et Maladies Métaboliques
M.	MOM Thierry	Oto-Rhino-Laryngologie
M.	RICHARD Ruddy	Physiologie
M.	SAPIN-DEFOUR Vincent	Biochimie et Biologie Moléculaire
M.	BAY Jacques-Olivier	Cancérologie
M.	COUDEYRE Emmanuel	Médecine Physique et de Réadaptation
Mme	GODFRAIND Catherine	Anatomie et Cytologie Pathologiques
M.	LAURICHESSE Henri	Maladies Infectieuses et Tropicales
M.	TOURNILHAC Olivier	Hématologie
M.	CHIAMBARETTA Frédéric	Ophthalmologie
M.	FILAIRE Marc	Anatomie – Chirurgie Thoracique et Cardio-Vasculaire
M.	GALLOT Denis	Gynécologie-Obstétrique
M.	GUY Laurent	Urologie
M.	TRAORE Ousmane	Hygiène Hospitalière
M.	ANDRE Marc	Médecine Interne
M.	BONNET Richard	Bactériologie, Virologie
M.	CACHIN Florent	Biophysique et Médecine Nucléaire
M.	COSTES Frédéric	Physiologie
M.	FUTIER Emmanuel	Anesthésiologie-Réanimation
Mme	HENG Anne-Elisabeth	Néphrologie
M.	MOTREFF Pascal	Cardiologie
Mme	PICKERING Gisèle	Pharmacologie Clinique
M.	RABISCHONG Benoît	Gynécologie Obstétrique
M.	CHABROT Pascal	Radiologie et Imagerie Médicale
M.	DESCAMPS Stéphane	Chirurgie Orthopédique et Traumatologique
Mme	HENQUELL Cécile	Bactériologie Virologie
M.	POMEL Christophe	Cancérologie – Chirurgie Générale

2ème CLASSE

Mme CREVEAUX Isabelle	Biochimie et Biologie Moléculaire
M. FAICT Thierry	Médecine Légale et Droit de la Santé
Mme KANOLD LASTAWIECKA Justyna	Pédiatrie
M. TCHIRKOV Andréï	Cytologie et Histologie
M. CORNELIS François	Génétique
M. LESENS Olivier	Maladies Infectieuses et Tropicales
M. AUTHIER Nicolas	Pharmacologie Médicale
M. BROUSSE Georges	Psychiatrie Adultes/Addictologie
M. BUC Emmanuel	Chirurgie Digestive
M. LAUTRETTE Alexandre	Néphrologie Réanimation Médicale
Mme BRUGNON Florence	Biologie et Médecine du Développement et de la Reproduction
M. ESCHALIER Romain	Cardiologie
M. MERLIN Etienne	Pédiatrie
Mme TOURNADRE Anne	Rhumatologie
M. DURANDO Xavier	Cancérologie
M. DUTHEIL Frédéric	Médecine et Santé au Travail
Mme FANTINI Maria Livia	Neurologie
M. SAKKA Laurent	Anatomie – Neurochirurgie
M. BOURDEL Nicolas	Gynécologie-Obstétrique
M. GUIEZE Romain	Hématologie
M. POINCLOUX Laurent	Gastroentérologie
M. SOUTEYRAND Géraud	Cardiologie
M. EVRARD Bertrand	Immunologie
M. POIRIER Philippe	Parasitologie et Mycologie
Mme PHAM DANG Nathalie	Chirurgie Maxillo-Faciale et Stomatologie
Mme SARRET Catherine	Pédiatrie
M. BOUVIER Damien	Biochimie et Biologie Moléculaire
M. BUISSON Anthony	Gastroentérologie
Mme CASSAGNES Lucie	Radiologie et Imagerie Médicale
M. GAGNIERE Johan	Chirurgie Viscérale et Digestive
M. JABAUDON-GANDET Matthieu	Anesthésiologie-Réanimation et Médecine Péri-Opératoire
M. LEBRETON Aurélien	Hématologie
M. MOISSET Xavier	Neurologie
M. SAMALIN Ludovic	Psychiatrie d'Adultes
M. THAVEAU Fabien	Chirurgie Vasculaire

PROFESSEURS DES UNIVERSITES DE MEDECINE GENERALE**1ère CLASSE**

M. VORILHON Philippe	Médecine Générale
Mme LAPORTE Catherine	Médecine Générale

PROFESSEURS DES UNIVERSITES

2ème CLASSE

Mme MALPUECH-BRUGERE Corinne Nutrition Humaine

PROFESSEURS ASSOCIES DES UNIVERSITES

Mme BOTTET-MAULOUBIER Anne Médecine Générale
M. CAMBON Benoit Médecine Générale
M. TANGUY Gilles Médecine Générale
M. BERNARD Pierre Médecine Générale

MAITRES DE CONFERENCES DES UNIVERSITES - PRATICIENS HOSPITALIERS

HORS CLASSE

Mme CHAMBON Martine Bactériologie Virologie
Mme BOUTELOUP Corinne Nutrition
Mme FOGLI Anne Biochimie Biologie Moléculaire
Mme GOUAS Laetitia Cytologie et Histologie, Cytogénétique

1ère CLASSE

M. MORVAN Daniel Biophysique et Traitement de l'Image
Mme GOUMY Carole Cytologie et Histologie, Cytogénétique
M. MARCEAU Geoffroy Biochimie Biologie Moléculaire
Mme MINET-QUINARD Régine Biochimie Biologie Moléculaire
M. ROBIN Frédéric Bactériologie
Mme VERONESE Lauren Cytologie et Histologie, Cytogénétique
M. DELMAS Julien Bactériologie
Mme MIRAND Audrey Bactériologie Virologie
M. OUCHCHANE Lemlih Biostatistiques, Informatique Médicale
et Technologies de Communication
Pharmacologie Médicale
M. LIBERT Frédéric Pédiatrie
Mme COSTE Karen Hygiène Hospitalière
Mme AUMERAN Claire Parasitologie - Mycologie
Mme NOURRISSON Céline Biologie et Médecine du Développement
et de la Reproduction
Mme PONS Hanaë

2ème CLASSE

M. COLL Guillaume	Neurochirurgie
M. GODET Thomas	Anesthésiologie-Réanimation et Médecine Péri-Opératoire
M. LACHAL Jonathan	Pédopsychiatrie
M. MOUSTAFA Farès	Médecine d'Urgence
M. CHENAF Chouki	Pharmacologie Clinique

**MAITRES DE CONFERENCES DES UNIVERSITES
DE MEDECINE GENERALE**

1ère CLASSE

Mme VAILLANT-ROUSSEL Hélène	Médecine Générale
-----------------------------	-------------------

MAITRES DE CONFERENCES DES UNIVERSITES

HORS CLASSE

M. BLANCHON Loïc	Biochimie Biologie Moléculaire
M. MARCHAND Fabien	Pharmacologie Médicale
Mme VAURS-BARRIERE Catherine	Biochimie Biologie Moléculaire

CLASSE NORMALE

M. BAILLY Jean-Luc	Bactériologie Virologie
Mme AUBEL Corinne	Oncologie Moléculaire
Mme GUILLET Christelle	Nutrition Humaine
M. BIDEY Yannick	Oncogénétique
M. DALMASSO Guillaume	Bactériologie
M. PIZON Frank	Santé Publique
M. SOLER Cédric	Biochimie Biologie Moléculaire
M. GIRAUDET Fabrice	Biophysique et Traitement de l'Image
M. LOLIGNIER Stéphane	Neurosciences – Neuropharmacologie
Mme MARTEIL Gaëlle	Biologie de la Reproduction
M. PINEL Alexandre	Nutrition Humaine

MAITRES DE CONFERENCES ASSOCIES DES UNIVERSITES

Mme ESCHALIER Bénédicte	Médecine Générale
Mme RICHARD Amélie	Médecine Générale
M. TESSIERES Frédéric	Médecine Générale
Mme ROUGE Laure	Médecine Générale
Mme BERTRAND-JARROUSSE Véronique	Médecine Générale
Mme VICARD-OLAGNE Mathilde	Médecine Générale

REMERCIEMENTS

Au Professeur André, pour votre accompagnement depuis le début, le partage de vos connaissances, vos conseils et avertissements. Merci de présider ce jury.

Au Professeur Ruivard, pour m'avoir fait confiance et m'avoir accompagnée avec une aide sans faille, enthousiasme, écoute et décision, merci pour votre encadrement précieux.

Au Professeur Schleinitz, de me faire l'honneur de juger ce travail de votre œil expert.

Au Professeur Godfraind, merci d'avoir accepté de juger ce travail et de faire partie de ce jury.

Au Docteur Grobost, pour tes encouragements réconfortants.

A Bruno Pereira, pour votre aide indispensable.

A l'équipe d'anatomopathologie : Marie, Marie-Pierre, Walter, pour tout votre travail ; Victoria, pour ton aide plus que nécessaire.

Au Professeur Aumaître, pour votre présence à nos côtés et votre soutien.

A Perrine, pour ta confiance, pédagogie, vivacité d'esprit et ton humanité ; Hervé, pour ton attention chaleureuse et tes conseils ; Louis, pour ta gentillesse et bienveillance ; Julien, pour ta gentillesse et modestie ; Mélissa, pour ton soutien ; Ludovic, pour ton aide (et l'IFN α). A Magali, Natacha, Paule, Claire, Olivier, pour mon très agréable semestre passé avec vous.

A Damien, pour le chemin parcouru, les délires innombrables, la hideur et l'esclaffe ; Alycia, pour les stétho bien mis ; Clôt, pour les goûters-confidences ; Agathe, pour ta sagesse ; Billy, pour la débrouille et le fun ; Jordan, pour le thé et la folie ; Domitile, 'just no way'. A Florence et à Marie d'être là. A mes co-internes, pour ce trail parcouru, les horaires tardifs et certains goûters biquotidiens. A Paul, Méryl, Sara, Louis, Hugo, pour les débuts. Merci pour vos amitiés.

A Lise et Alexis, pour ce trio précieux ; Céline, Nicolas, Alexandre pour les poulperies éternelles ; Adrien, là depuis toujours ; Céline et Victoria, pour les activités partagées et à venir. A Julie, Emeline, Parag qui, même loin, sont proches. Merci d'être mes amis.

A celui qui est là (presque) tous les jours pour voir comme c'est dur parfois d'être moi, entendre les idées incongrues et inopinées et les blagues apparemment pas drôles. Allez, courage.

A Isabelle, pour ta présence, comme si depuis toujours.

A mes parents d'être là, toujours, de m'avoir accompagnée et d'avoir bien essayé de comprendre ce que c'était que la MAG4...

TABLE OF CONTENTS

INTRODUCTION.....	15
METHODS.....	17
1. Patients	17
1.1. IgG4-RD patients	17
1.2. Non-auto-immune controls	18
1.3. Sjögren’s syndrome controls.....	18
2. Immunohistochemistry of DNAJB9.....	19
3. Statistics	20
4. Ethics.....	20
RESULTS.....	21
1. Patient characteristics	21
2. Immunohistochemical expression of DNAJB9	26
DISCUSSION	29
CONCLUSIONS	31
BIBLIOGRAPHY	33
ACKNOWLEDGEMENTS	35
APPENDICES.....	36

LIST OF TABLES AND FIGURES

FIGURES

Figure 1: Representation of the immunohistochemical scoring system for DNAJB9.....	26
Figure 2: Immunohistochemistry of DNAJB9 revealing fibrillary glomerulonephritis..	27
Figure 3: Representation of DNJAB9 immunohistochemistry results.....	28

TABLES

Table I: Characteristics of IgG4-related disease patients	23
Table II: Characteristics of non-auto-immune controls.....	24
Table III: Characteristics of Sjögren's syndrome controls	25
Table IV: Immunochemical expression of DNAJB9 in normal tissue.....	29

LIST OF APPENDICES

Appendix I: Manifestations of IgG4-related disease.....	36
Appendix II: Illustration of DNAJB9 functions in cell survival.	37
Appendix III: The 2020 Revised Comprehensive Diagnostic criteria for IgG4-related disease.....	38
Appendix IV: The 2019 ACR/EULAR classification criteria for IgG4-related disease ..	39
Appendix V: International Consensus Diagnostic Criteria for Autoimmune Pancreatitis	41
Appendix VI: Immunohistochemical expression of DNAJB9 in normal tissue	42
Appendix VII: Plasma cells	43

LIST OF ABBREVIATIONS

ACR/EULAR: American College of Rheumatology and the European League Against Rheumatism

ADICAP: Association pour le Développement de l'Informatique en Cytologie et en Anatomie Pathologiques

AIP: autoimmune pancreatitis

ANA: antinuclear antibodies

ANCA: anti-neutrophil cytoplasmic antibodies

CDC: Comprehensive Diagnostic Criteria

CRP: C-reactive protein

CS: cytoplasmic staining

DNAJB9: DnaJ Heat Shock Protein Family B Member 9

ENA: Extractable Nuclear Antigen

ER: endoplasmic reticulum

ERdj4: endoplasmic reticulum DNAJ domain-containing protein 4

FGN: fibrillary glomerulonephritis

ICDC: International Consensus Diagnostic Criteria

IgG4-RD: immunoglobulin G4-related disease

IQR: interquartile range

Mdg-1: microvascular endothelial differentiation gene 1 protein

MGN: membranous glomerulonephritis

NAI: non-auto-immune

RCD: Revised Comprehensive Diagnostic

SCS: systemic corticosteroids

SS: Sjögren's syndrome

TIN: tubular interstitial nephropathy

INTRODUCTION

Immunoglobulin G4-related disease (IgG4-RD) is a rare, multisystem, fibro-inflammatory, immune-mediated condition(1) presenting with mass-forming lesions and strictures that can affect almost any organ(2) (**Appendix I**). Autoimmune pancreatitis (AIP) was the first disease manifestation to be described but others have since been reported, including sclerosing cholangitis, lymphadenopathy, dacryoadenitis, sialadenitis, tubulointerstitial nephritis, retroperitoneal fibrosis and pseudotumors(3,4). The diagnosis is made by the association of clinical, biological and histological features(5).

IgG4-RD is characterised by elevated serum IgG4 levels, a dense polyclonal IgG4⁺ plasma cell infiltration(2) and abnormalities in the differentiation of the B-cell lineage(6). A specific subset of circulating B cells was shown to be increased in IgG4-RD patients(7). These CD19⁺CD24⁻CD38^{hi} plasmablasts/plasma cells correlated positively with serum IgG4 levels and the number of organs involved, and decreased significantly after steroid treatment. Differential gene expression analysis in CD19⁺CD24⁻CD38^{hi} plasmablasts/plasma cells showed upregulation of several genes, including the DnaJ Heat Shock Protein Family B Member 9 (*DNAJB9*) gene, coding for co-chaperone protein DNAJB9(6).

DNAJB9 – also named endoplasmic reticulum DNAJ domain-containing protein 4 (ERdj4) or microvascular endothelial differentiation gene 1 protein (Mdg-1) – is a co-chaperone protein located in the nuclei(8) and endoplasmic reticulum (ER)(9). It is expressed at low levels in all human tissues, with the highest levels of expression in tissues with cells with well-developed endoplasmic reticulum (ER) such as the liver, placenta, and kidneys. DNAJB9 protects against cell death and governs the integrity and functions of different cells(10) (**Appendix II**)

Recently, DNAJB9 was shown to be abundant in the glomeruli of patients with fibrillary glomerulonephritis (FGN), a rare proliferative form of glomerulonephritis, characterised by IgG, C3 and light chain deposits in the mesangium and/or along the glomerular basement membranes(11). It was shown to co-localise in large proportions with IgG4 deposits(12). Histological similarities can be found between FGN and IgG4-related kidney disease, such as granular IgG and C3 deposits along the tubular basement membrane in 80% of IgG4-related tubular interstitial nephropathy cases, and IgG4 sub-epithelial or mesangial deposits in IgG4-related membranous glomerulonephritis(13). FGN is associated with inflammatory and autoimmune diseases, such as Sjögren's syndrome (SS), in 13 to 30% of cases(10).

These findings suggest a pathophysiological link between FGN and autoimmune or inflammatory disorders, DNAJB9 being a putative autoantigen(10), which may also trigger IgG4 production in IgG4-RD.

As there is no specific marker for the diagnosis of IgG4-RD(3), evidence of DNAJB9 tissue upregulation in IgG4-RD patients could be a turning point for the diagnosis and treatment-response monitoring of IgG4-RD. Tissue expression of DNAJB9 in IgG4-RD has, to our knowledge, never been explored.

In this study we question DNABJ9 immunohistochemical expression in tissues from patients with IgG4-RD to determine if it may play a role in IgG4-RD pathophysiology.

METHODS

1. Patients

1.1. IgG4-RD patients

IgG4-RD cases were selected by examining all high serum IgG4 measurements (high range 0.86g/L, immunoturbidimetric method, Optilite®, The Binding Site) assessed between 2016 and 2020 in the Immunology department of *Gabriel Montpied* Teaching Hospital, Clermont-Ferrand. Only serum IgG4 levels greater than 1.35g/L were considered, and each corresponding patient's medical record was examined to determine whether a diagnosis of IgG4-RD had been made. Additional IgG4-RD cases were included by asking clinicians for details of known IgG4-RD patients who had been followed in the Internal Medicine departments of *Gabriel Montpied* and *Estaing* Teaching Hospitals, Clermont-Ferrand.

Only definite IgG4-RD cases were selected by meeting either the 2020 Revised Comprehensive Diagnostic (RCD) criteria for IgG4-RD (**Appendix III**), the American College of Rheumatology and the European League Against Rheumatism (ACR/EULAR) international classification criteria (**Appendix IV**) or the International Consensus Diagnostic Criteria (ICDC) for AIP (**Appendix V**).

Each selected IgG4-RD patient's medical record was examined and information was collected regarding sex, age at tissue biopsy, significant medical history, organs involved in IgG4-RD, lab tests results at sampling (C-Reactive Protein [CRP], eosinophils, serum IgG4), pathology reports regarding the tissue sample showing evidence for IgG4-RD, the organ sampled, RCD, ACR/EULAR or ICDC scoring, number and nature of treatments undertaken to achieve remission.

1.2. Non-auto-immune controls

To select non-auto-immune (NAI) tissue controls corresponding to each IgG4-RD affected organ, we generated for each organ a list of samples examined from 2016 to 2021 in the Pathology laboratories of *Gabriel Montpied* and *Estaing* Teaching Hospitals, Clermont-Ferrand, using the ‘Association pour le Développement de l’Informatique en Cytologie et en Anatomie Pathologiques’ (ADICAP) coding system. Where several controls were available, the nearest in age was selected. Cases and controls were not matched on sex.

For each tissue sample selected, the patient’s medical record was examined, and information was collected regarding sex, age at biopsy, significant medical history, lab tests results at sampling (CRP and eosinophil levels), pathology reports regarding the tissue sample, and the organ sampled.

1.3. Sjögren’s syndrome controls

Each IgG4-RD salivary gland tissue sample was paired with a SS control. We also used the ADICAP coding system to go through salivary gland biopsies and select patients compatible with SS, according to the ACR/EULAR classification criteria(14).

For each tissue sample selected, the patient’s medical record was examined and information was collected regarding sex, age at biopsy, significant medical history, organs involved in SS, lab tests results at sampling (CRP and eosinophil levels), pathology reports regarding the sample, the organ biopsied, the number of organs involved in the disease, ACR/EULAR scoring, and the number and nature of treatments undertaken to achieve remission.

2. Immunohistochemistry of DNAJB9

We collected the existing hematoxylin-eosin-stained slides for each patient, and the existing IgG4-stained slides for IgG4-RD patients. Extra IgG4-stained slides were made for SS controls to rule out IgG4-RD. For each IgG4-RD case, non-auto-immune and SS control, a new slide was made from the corresponding tissue block. Anti-DNAJB9 immunohistochemistry (IHC) was then performed on 4µm-thick, 4% formaldehyde-fixed and paraffin-embedded tissue sections, mounted on positively charged slides. Slides were stained with an anti-DNAJB9 polyclonal antibody (catalogue no. HPA040967; 1/75 titre; Sigma-Aldrich, St Louis, MO) on a Ventana BenchMark XT machine. The staining protocol included deparaffinisation, epitope retrieval with Cell Conditioner for 32 minutes, incubation with 100µL of the primary antibody for 32 minutes at 37°C, then OptiView HQ Universal Linker for 8 minutes and OptiView HRP Multimer for 8 minutes. OptiView DAB chromogen and hydrogen peroxide were then added for signal generation. Finally, counterstaining was performed with Hematoxylin II for 8 minutes and then bluing reagent for 4 minutes. The slides were then analysed using a Carl Zeiss microscope. All were examined blinded, by 2 readers, including a junior pathologist, and a third opinion was sought if they disagreed. To recognise normal staining, we referred to The Human Protein Atlas website and *Nasr et al.* descriptions of IHC of DNAJB9 in normal tissues (**Appendix VI**). As DNAJB9 is known to be a specific marker for FGN, there were no extra-renal positive controls available. Our positive control consisted of a kidney tissue sample from a patient with FGN. Information regarding tissue structure, staining pattern, intensity and distribution was sought. We designed an immunohistochemical intensity scoring system with the following grading: 0 (negative), 1 (very weak), 2 (weak), 3 (moderate) and 4 (strong).

3. Statistics

Patient characteristics were described by headcounts and percentages for categorial variables, and by mean and standard deviation or median and interquartile range for quantitative variables, according to their statistical distribution. Assumption of normality was studied using a Shapiro-Wilk test. For quantitative variables, comparisons between independent groups (IgG4-RD vs. NAI) were made using a Student t test, or a Mann-Whitney test if the conditions to use a t test were not met. Homoscedasticity (equality of variables) was studied with a Fisher-Snedecor test. Comparisons between groups regarding categorial parameters were made using a Chi² test, or a Fisher exact test where applicable. Given the headcounts, we preferred non-parametric tests. All statistical analyses were conducted with Stata software (version 15, StataCorp, College Station, USA), taking into consideration a bilateral Type I error risk of 5%.

4. Ethics

This study was retrospective and all investigations were led using data and samples collected at the time of patients' original disease investigation and diagnosis, and did not necessitate any extra data collection or sampling. Therefore, this study did not require validation from the ethics committee. However, each patient was sent a no-objection letter by post. None refused to participate.

RESULTS

1. Patient characteristics

We collected 11 IgG4-RD cases, 21 non-auto-immune and 6 SS controls. Nine slides were rejected because the staining procedure failed (1 prostatic sample and 1 salivary gland sample from the IgG4-RD group; 1 salivary gland sample, 1 pancreatic and 1 lung samples from the NAI control group; and 3 salivary gland samples from the SS control group) or because sample quality was poor (1 salivary gland sample from the NAI control group). Two extra slides were rejected because they were controls for the IgG4-related prostatitis sample.

After exclusion of the 11 faulty slides, 9 IgG4-RD cases (5 salivary gland biopsies, 1 pleural biopsy, 1 lung biopsy, 1 pancreatic biopsy and 1 retroperitoneal fibrosis sample), 15 NAI controls (10 salivary gland biopsies, 1 pleural biopsy, 1 lung biopsy, 1 pancreatic biopsy and 2 samples of fibrotic nodules), and 3 SS controls (salivary gland samples) were available. **Table I** and **Table II** show characteristics for IgG4-RD patients and NAI controls, respectively. Because too few SS cases were available, they were not included in further results (characteristics of SS patients are shown in **Table III**).

Males represented 66.7% in each group (IgG4-RD patients and NAI controls). The mean age at biopsy was similar in each group (65 ± 12 years in the IgG4-RD group and 67 ± 14 years in the NAI control group, $p = 0.86$). Regarding IgG4-RD organ involvement, 44.4% had 1 organ involved, 22.2% had 2 organs involved and 33.3% had 3 organs involved. Mean serum IgG4 concentrations were 2.8 ± 1.1 g/L in the IgG4-RD group, and 33.3% of IgG4-RD patients had an eosinophil count above 0.4G/L (8.3% in the NAI control group; data was unavailable for 3 patients). The median ACR/EULAR score was 24 (interquartile range [IQR] = 23 – 28). There was no significant difference regarding the inflammatory status between our groups: CRP levels

were greater than 5mg/L in 55.6% of IgG4-RD patients and 30% of NAI controls (CRP levels were unavailable for 5 NAI patients) ($p = 0.63$). For 2 IgG4-RD patients with elevated CRP levels at the time of biopsy (16 and 105mg/L), the elevation was possibly due to concomitant synovitis in the first case and infectious prostatitis in the second. One IgG4-RD patient with well-defined pancreatic IgG4-RD according to the ICDC for AIP had rheumatoid arthritis with positive antinuclear antibodies (ANA) (1:2560), anti-SSA ($> 8U$; normal range $< 1U$) and anti-CCP antibodies. He did not have sufficient ACR/EULAR scoring for SS. Among our NAI controls, 1 patient had positive anti-MPO antibodies (2.9U, normal range $< 1U$, multiplex flow immunoassay, BioPlex 2200®, Bio-Rad), negative anti-neutrophil cytoplasmic antibodies (ANCA) on fluorescence, without symptoms for ANCA-associated-vasculitis. Two patients (1 IgG4-RD patient and 1 NAI patient) were under immune-suppressive therapy (systemic corticosteroids, methotrexate) at the time of biopsy. The median number of treatments undertaken to achieve remission of IgG4-RD was 1 (IQR = 0 – 3).

Patient	Sex	Age at biopsy	Significant history	IgG4-RD manifestations	Organ biopsied	Serum IgG4 at diagnosis (g/L)	ACR/EULAR score (IgG4-RD)*	Treatments
1	M	77	Dilated cardiomyopathy	AIP, sialadenitis, sclerosing cholangitis	Minor salivary gland	2.9	20	SCS
2	M	74	Rheumatoid arthritis, lymphocytic colitis	AIP	Pancreas	2.8	23	RTX
3	F	72	Hypertension, hypothyroidism, breast and uterine cancer	AIP, sialadenitis, lymphadenopathy	Minor salivary gland	5.5	63	SCS
4	M	64	Hypertension, type 2 diabetes, ischemic heart disease, colon adenocarcinoma	Pleural, rétro-péritonéal fibrosis	Pleura	2.0	23	SCS, RTX, AZA, MA
5	F	62	Asthma	Sialadenitis, lymphadenopathy	Submandibular gland	3.1	24	None
6	M	47	Hypertension, pericarditis	Pulmonary, posterior uveitis	Lung	2.2	24	SCS, RTX, MA
7	F	74	Unsignificant	Sialadenitis	Submandibular gland	2.4	28	None
8	M	44	Unsignificant	Retroperitoneal fibrosis	Retroperitoneal fibrosis	1.7	28	SCS, MTX, surgery
9	M	75	Unsignificant	Sialadenitis	Submandibular gland	2.6	26	None

Table I: Characteristics of IgG4-related disease patients. M: male, F: female, AIP: autoimmune pancreatitis, SCS: systemic corticosteroids, RTX: rituximab, AZA: azathioprine, MA: mycophenolic acid, MTX: methotrexate, *threshold (specificity 99.2%, sensitivity 85.5%) ≥ 20

Patient	Sex	Age at biopsy	Significant history	Organ biopsied
10	F	81	Type 2 diabetes, hypertension, gout, colon high-grade dysplasia polyp	Minor salivary gland
11	M	68	Type 2 diabetes, hypertension, intraductal papillary mucinous neoplasm, psoriasis	Pancreas
12	M	69	Hypertension, idiopathic sensitive neuropathy	Minor salivary gland
13	M	70	Mixed liver cirrhosis, cardiac and renal insufficiency	Minor salivary gland
14	M	83	Infectious endocarditis, renal insufficiency	Pleura
15	M	68	Central retinal artery occlusion, uveitis, metastatic cutaneous fibrosarcoma, idiopathic chronic pachymeningitis	Minor salivary gland
16	M	63	Type 2 diabetes, hypertension	Minor salivary gland
17	F	45	Unsignificant	Minor salivary gland
18	F	59	Unsignificant	Lung
19	F	72	Type 2 diabetes, hypertension	Minor salivary gland
20	F	72	Breast adenocarcinoma, unicentric Castleman's disease *, paraneoplastic pemphigus*	Minor salivary gland
21	M	69	Colon carcinoma, lung adenocarcinoma	Retroperitoneal fibrosis
22	M	32	Unsignificant	Retroperitoneal fibrosis
23	M	78	Type 2 diabetes, hypertension, IgA type multiple myeloma, prostatic neoplasm**, acute ischemic anterior optic neuropathy	Minor salivary gland
24	M	77	Hypertension, idiopathic membranoproliferative glomerulonephritis	Minor salivary gland

Table II: Characteristics of non-auto-immune controls. M: male, F: female, *9 years prior to biopsy and of full recovery, **cured

Patient	Sex	Age at biopsy	Significant history	SS manifestations	Organ biopsied	ACR/EULAR score (SS)*	Treatments
25	F	72	Chronic heart failure	Sicca symptoms, pulmonary, renal	Minor salivary gland	6	SCS, RTX
26	F	58	Unsignificant	Sicca symptoms, pulmonary	Minor salivary gland	5	HC
27	M	66	Hyperferritinemia, ischemic heart disease	Sicca symptoms	Minor salivary gland	6	SCS

Table III: Characteristics of Sjögren's syndrome controls. *M: male, F: female, SS: Sjögren's syndrome, SCS: systemic corticosteroids, RTX: rituximab, HC: hydroxychloroquine, *threshold (specificity 95%, specificity 96%) ≥ 4*

2. Immunohistochemical expression of DNAJB9

Figure 1 is an example of each staining intensity score category. **Figure 2** shows the immunohistochemical aspect of our positive control, with glomerular homogenous, smudgy, extracellular deposits.

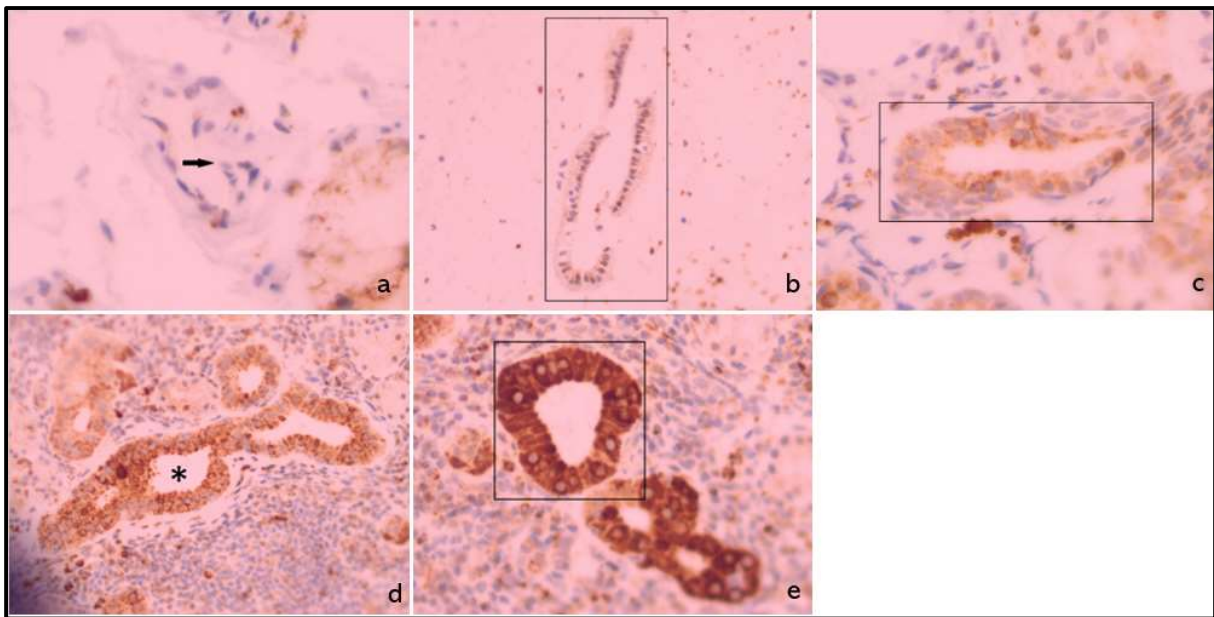


Figure 1: Representation of the immunohistochemical scoring system for DNAJB9. Immunohistochemistry of DNAJB9 showing (a) negative endothelial cells (arrow) in a blood vessel of a minor salivary gland biopsy from a non-auto-immune control patient, (b) very weak staining of ductal epithelial cells in a pancreatic duct (rectangle) from a patient with IgG4-related autoimmune pancreatitis, (c) weak, (d) moderate and (e) strong staining of ductal epithelial cells in salivary glands from patients with IgG4-related sialadenitis. (a-e, magnification x400.)

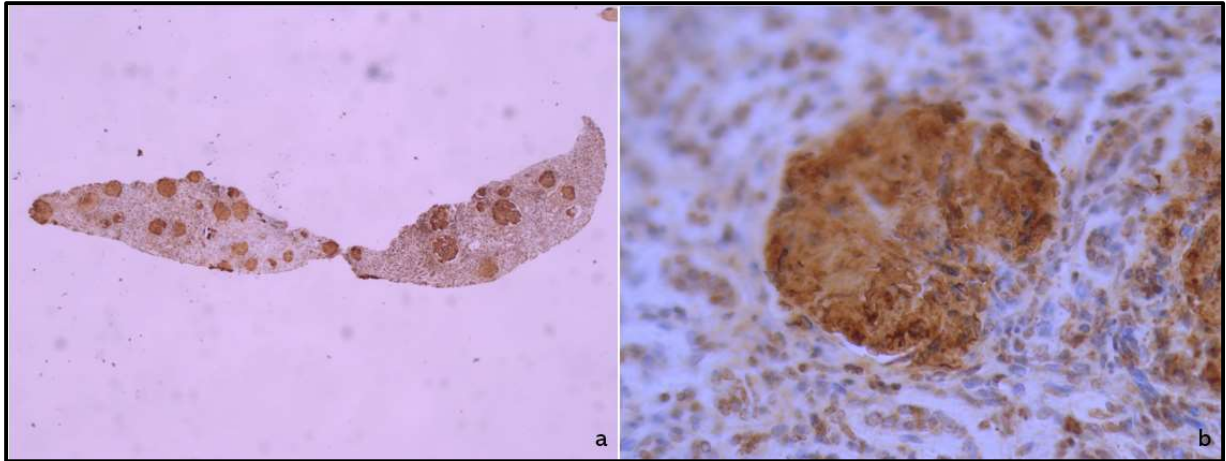


Figure 2: Immunohistochemistry of DNAJB9 revealing fibrillary glomerulonephritis. Immunohistochemistry of DNAJB9 in a renal sample (a,b) showing strong glomerular, smudgy, extracellular staining suggestive of fibrillary glomerulonephritis. (a, magnification x20, b, magnification x400.)

Among all patients included, the median intensity score for endothelial cells was 0 (IQR = 0 – 0) in the IgG4-RD group and 2 (IQR = 1 – 2) in NAI controls ($p < 0.01$). For ductal epithelial cells, the median intensity score was 3 (IQR = 2 – 3) in each group ($p = 0.60$). For glandular epithelial cells it was 2 (IQR = 2 – 2) in each group ($p = 0.26$). For inflammatory cells (including lymphocytes, plasma cells and undifferentiated inflammatory cells) it was 3 (IQR = 2 – 3) in each group ($p = 0.74$). These results are represented in **Figure 3**.

We did the same analysis considering salivary gland alone (5 IgG4-RD patients and 10 NAI controls) to put aside the potential influence of tissue type on IHC intensity. The median intensity score for endothelial cells was 0 (IQR = 0 – 0) in the IgG4-RD group and 1 (IQR = 1 – 2) in NAI controls ($p = 0.01$); for inflammatory cells, the median intensity score was 2 (IQR = 2 – 2) in the IgG4-RD group and 3 (IQR = 2 – 3) in NAI controls ($p = 0.11$); for ductal epithelial cells it was 3 (IQR = 3 – 3) in each group ($p = 0.76$); and for glandular epithelial cells, the median intensity score was 2 (IQR = 2 – 2) in each group ($p = 0.11$) (data not shown). We could not draw conclusions regarding smooth muscle cells, myoepithelial cells, mesothelial

cells, pneumocytes, respiratory epithelial cells and fibroblasts due to the small number of patients available (data not shown).

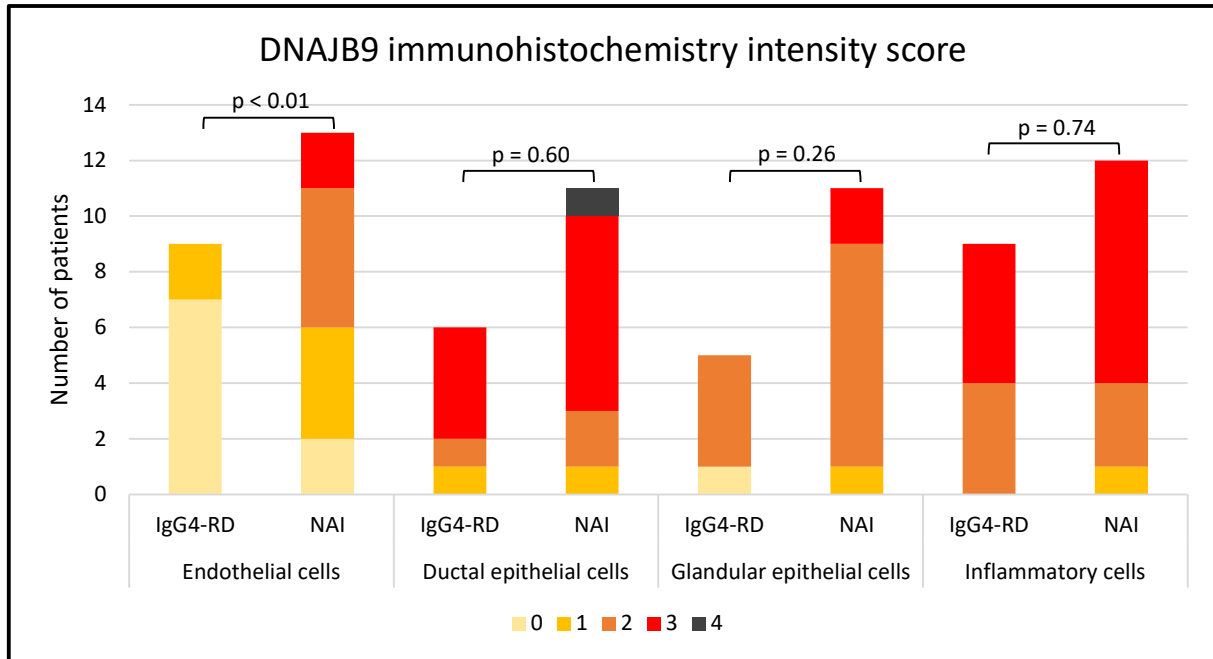


Figure 3: Representation of DNJAB9 immunohistochemistry results. Illustration of DNAJB9 immunohistochemical staining intensity in endothelial cells, ductal and glandular epithelial cells, and inflammatory cells in patients with IgG4-related disease and non-auto-immune controls. Medians of staining intensity were compared using a Mann-Whitney test.

Furthermore, in IgG4-RD patients, endothelial staining intensity was negatively correlated with serum IgG4 concentrations ($r = -0.72$, $p = 0.03$) and the number of treatments required to achieve disease remission ($r = -0.70$, $p = 0.04$).

All our patients displayed a cytoplasmic and granular IHC staining pattern, regardless of their study group. **Table IV** describes the staining pattern in cells of interest in normal tissue from NAI patients.

Secondarily, we identified 3 patients with positive plasma cells, 2 of which belonged to the IgG4-RD group and 1 to the NAI control group (**Appendix VII**).

Organ system	Location and characteristics of DNAJB9 staining
Digestive system	
Pancreas	Acinar cells (very weak, granular, CS), ductal epithelial cells (very weak, granular, CS)
Salivary gland	Acinar cells (weak to moderate, granular, CS), ductal epithelial cells (weak to strong, granular, CS)
Respiratory system	
Lung	Epithelial respiratory cells (moderate, granular, CS), pneumocytes (moderate, granular, CS)
Pleura	Fibroblasts (negative to moderate, granular, CS), mesothelial cells (negative)
Immune system	
Immune cells	Lymphocytes (negative to moderate, granular, CS), plasma cells (moderate, granular, CS)
Vascular system	
Vessels	Endothelial cells (negative to moderate, granular, CS)

Table IV: Immunochemical expression of DNAJB9 in normal tissue. CS: cytoplasmic staining

DISCUSSION

This study was to our knowledge the first to explore tissular expression of DNAJB9 in IgG4-RD.

In this study, all patients displayed a cytoplasmic and granular staining pattern, showing there was no difference in DNAJB9 expression patterns between IgG4-RD patients and NAI controls. This aspect coincided with the description of immunochemical expression of DNAJB9 in normal tissue by *Nasr et al.*(11) (**Appendix VI**).

We also evidenced that there was no significant difference in terms of staining intensity for DNAJB9 between IgG4-RD patients and NAI controls regarding ductal and glandular epithelial cells and inflammatory cells. The same conclusion was drawn as to salivary glands alone.

However, endothelial cells showed significantly weaker staining in the IgG4-RD group compared to NAI controls, suggesting possible loss of DNAJB9 expression in those cells. Staining intensity seemed to be negatively correlated with baseline concentrations of serum IgG4 and the number of treatments needed to achieve disease remission.

Our findings regarding endothelial cells seemed paradoxical as IgG4-RD is known to be an inflammatory disease, and inflammatory vascular lesions have been evidenced, with adventitial fibrous thickening and infiltration of inflammatory cells(15), and we expected to show higher expressions of DNAJB9 in IgG4-RD tissues compared to NAI controls.

Although the mechanisms underlying DNAJB9 loss of expression in endothelial cells remain unclear, the endostatin pathway could be partially explanatory. Inflammation leads to tissue hypoxemia which ultimately activates angiogenesis(16). Under such stressful conditions, endothelial cells increase their secretory activity(17), leading to higher levels of ER-resident chaperones and co-chaperones, such as DNJAB9, minimising the amount of misfolded proteins, and contributing to perpetual inflammation via the secretion of pro-inflammatory cytokines(17,18). DNAJB9 was shown to be strongly induced in endothelial cells submitted to stress(18). In IgG4-RD, endostatin – a protein with profibrotic and antiangiogenic activities – was shown to be significantly upregulated compared to healthy controls(19). The implications of endostatin could explain lowered levels of DNJAB9 through its antiangiogenic action, reducing the need for DNAJB9 activation.

In IgG4-RD, pro-inflammatory pathways are upregulated but the implication of regulatory T lymphocytes has also been evidenced(20). Investigating the immune and inflammatory regulations in IgG4-RD at an endothelial level may help to explain our findings and understand their pathological implications in IgG4-RD pathophysiology and management.

High baseline concentrations of serum IgG4 have been associated with a greater risk of disease relapse(21). A negative correlation between endothelial staining intensity and serum

IgG4 levels may suggest lower expression of DNAJB9 in endothelial cells in patients with a higher risk of disease relapse.

Our study did have limitations. First, we studied a small number of patients, no auto-immune controls, and mixed organ types. Two patients were under immune suppressive therapy (SCS, MTX) at the time of biopsy. Secondly, we submitted a semi-quantitative intensity scoring system that might be examined further by considering more patients and a single organ type – or even patients with IgG4-related arterial disease – and auto-immune controls, to see if endothelial loss of expression for DNAJB9 is specific to IgG4-RD. Increasing the number of patients may evidence differences in DNJAB9 tissue expression in other cell types.

CONCLUSIONS

Immunohistochemical expression of DNAJB9 was studied in patients with IgG4-related disease and in non-auto-immune controls, regarding its staining pattern and intensity. No difference was shown in terms of staining pattern between the two groups, and there was no difference in terms of staining intensity in the different tissue cell types, except in endothelial cells in which it was significantly weaker in the IgG4-related disease group. These results were unexpected as IgG4-related disease is an inflammatory disorder with the potential for vascular involvement and we anticipated overexpression of DNAJB9 in IgG4-related disease. The pathophysiological mechanisms underlying this potential loss of expression of DNAJB9 in endothelial cells in IgG4-related disease remain unclear. Our scoring system could be applied to additional patients to confirm its usefulness and determine the specificity of our findings. The endostatin and regulatory T cell pathways could be ones to explore further.

CONCLUSION

Nous avons étudié l'expression immunohistochimique du DNAJB9 en termes d'aspect et d'intensité de marquage chez des patients atteints de la maladie associée aux IgG4 et chez des témoins non auto-immuns. Il n'y avait aucune différence d'aspect de marquage entre les deux groupes, ni d'intensité de marquage des différents types cellulaires, hormis pour les cellules endothéliales pour lesquelles l'intensité était significativement plus faible dans le groupe de patients avec une maladie associée aux IgG4 par rapport aux témoins non auto-immuns. Ces résultats étaient inattendus étant donné le caractère inflammatoire de cette pathologie et son possible tropisme vasculaire et nous nous attendions à une surexpression du DNAJB9. Les mécanismes physiopathologiques sous-tendant cette potentielle perte d'expression du DNAJB9 dans les cellules endothéliales dans la maladie associée aux IgG4 restent incertains. Notre système de gradation d'intensité de marquage pourrait être appliqué à davantage de patients pour confirmer son utilité et vérifier la spécificité de nos résultats. Les voies de l'endostatine et des lymphocytes T régulateurs pourraient être explorées davantage.

Le Doyen de l'UFR de Médecine
Pr Pierre CLAVELOU



Le Président du Jury
Pr Marc ANDRE


CHU GABRIEL MONTPIED
63003 CLERMONT-FERRAND CEDEX 1
Professeur Marc ANDRE
Médecine Interne
mandre@chu-clermontferrand.fr
Tél. : 04 73 751 435 - Fax : 04 73 754 799
numéro RPPS : 10003168068

BIBLIOGRAPHY

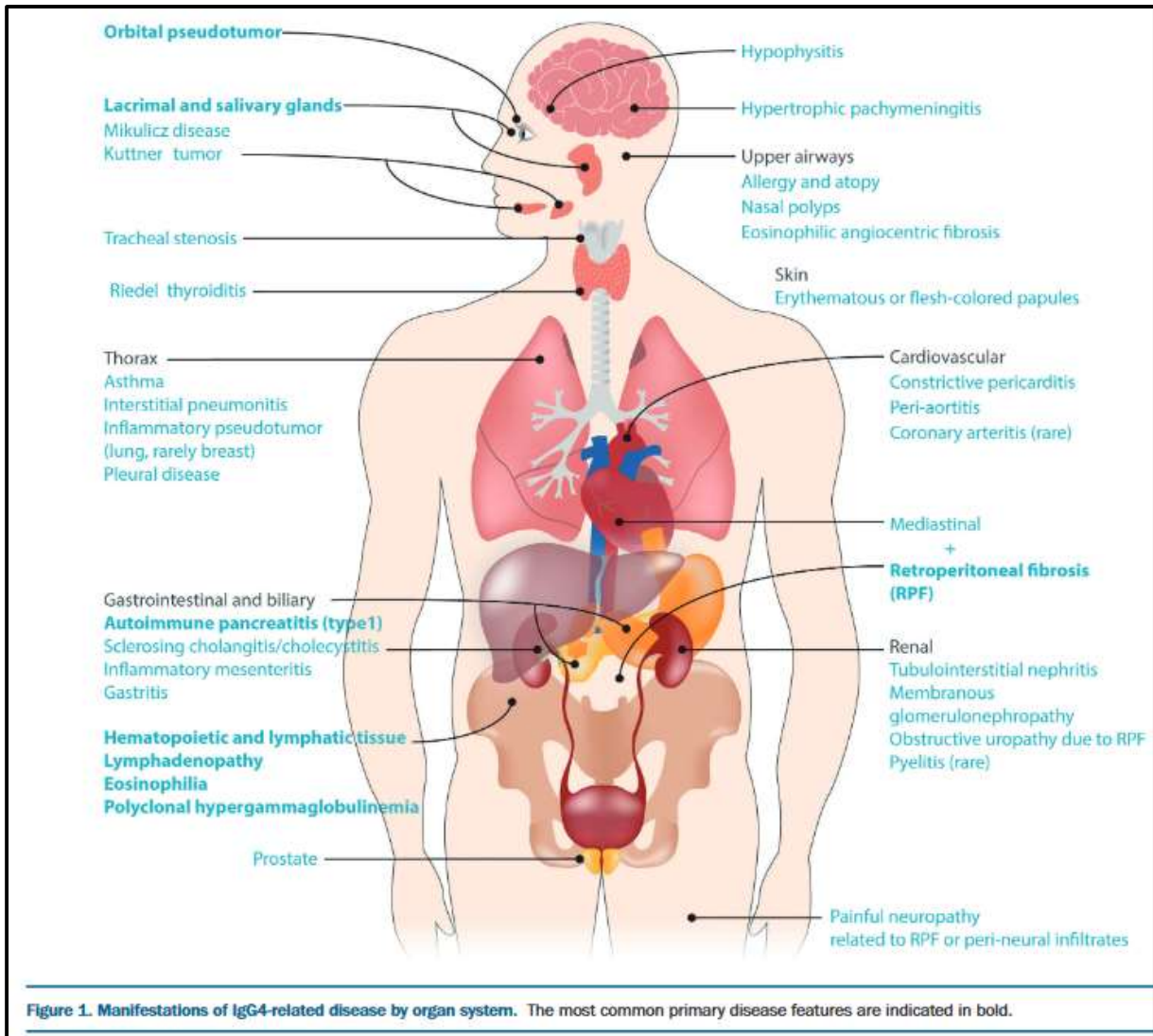
1. Li J, Peng Y, Zhang Y, Zhang P, Liu Z, Lu H, et al. Identifying clinical subgroups in IgG4-related disease patients using cluster analysis and IgG4-RD composite score. *Arthritis Res Ther*. 2020 Dec;22(1):7.
2. Stone JH, Deshpande V. IgG4-Related Disease. *N Engl J Med*. 2012;13.
3. Ebbo M, Grados A, Daniel L, Vély F, Harlé JR, Pavic M, et al. [IgG4-related systemic disease: emergence of a new systemic disease? Literature review]. *Rev Med Interne*. 2012 Jan;33(1):23–34.
4. Wallace ZS, Perugino C, Matza M, Deshpande V, Sharma A, Stone JH. IgG4-Related Disease. *Clin Chest Med*. 2019 Sep;40(3):583–97.
5. Umehara H, Okazaki K, Masaki Y, Kawano M, Yamamoto M, Saeki T, et al. Comprehensive diagnostic criteria for IgG4-related disease (IgG4-RD), 2011. *Mod Rheumatol*. 2012 Feb;22(1):21–30.
6. Lin W, Zhang P, Chen H, Chen Y, Yang H, Zheng W, et al. Circulating plasmablasts/plasma cells: a potential biomarker for IgG4-related disease. *Arthritis Res Ther*. 2017 Dec;19(1):25.
7. Lin W, Jin L, Chen H, Wu Q, Fei Y, Zheng W, et al. B cell subsets and dysfunction of regulatory B cells in IgG4-related diseases and primary Sjögren's syndrome: the similarities and differences. *Arthritis Res Ther*. 2014;16(3):R118.
8. Qiu XB, Shao YM, Miao S, Wang L. The diversity of the DnaJ/Hsp40 family, the crucial partners for Hsp70 chaperones. *Cell Mol Life Sci CMLS*. 2006 Nov 1;63(22):2560–70.
9. Ozkaya AB, Ak H, Aydin HH. High concentration calcitriol induces endoplasmic reticulum stress related gene profile in breast cancer cells. *Biochem Cell Biol*. 2017 Apr;95(2):289–94.
10. Nasr SH, Fogo AB. New developments in the diagnosis of fibrillary glomerulonephritis. *Kidney Int*. 2019 Sep;96(3):581–92.
11. Nasr SH, Vrana JA, Dasari S, Bridoux F, Fidler ME, Kaaki S, et al. DNAJB9 Is a Specific Immunohistochemical Marker for Fibrillary Glomerulonephritis. *Kidney Int Rep*. 2017 Aug 8;3(1):56–64.
12. Andeen NK, Yang HY, Dai DF, MacCoss MJ, Smith KD. DnaJ Homolog Subfamily B Member 9 Is a Putative Autoantigen in Fibrillary GN. *J Am Soc Nephrol JASN*. 2018;29(1):231–9.
13. Salvadori M, Tsalouchos A. Immunoglobulin G4-related kidney diseases: An updated review. *World J Nephrol*. 2018 Jan 6;7(1):29–40.

14. Shiboski CH, Shiboski SC, Seror R, Criswell LA, Labetoulle M, Lietman TM, et al. 2016 American College of Rheumatology/European League Against Rheumatism classification criteria for primary Sjögren's syndrome: A consensus and data-driven methodology involving three international patient cohorts. *Ann Rheum Dis*. 2017 Jan 1;76(1):9–16.
15. Kasashima F, Kawakami K, Matsumoto Y, Endo M, Kasashima S, Kawashima A. IgG4-Related Arterial Disease. *Ann Vasc Dis*. 2018 Mar 25;11(1):72–7.
16. Alaarg A, Pérez-Medina C, Metselaar JM, Nahrendorf M, Fayad ZA, Storm G, et al. Applying nanomedicine in maladaptive inflammation and angiogenesis. *Adv Drug Deliv Rev*. 2017 Sep 15;119:143–58.
17. Berger BJ, Müller TS, Buschmann IR, Peters K, Kirsch M, Christ B, et al. High levels of the molecular chaperone Mdg1/ERdj4 reflect the activation state of endothelial cells. *Exp Cell Res*. 2003 Oct;290(1):82–92.
18. Tsaryk R, Bartholomä NM, Simiantonaki N, Anspach L, Peters K, Heilmann C, et al. Endoplasmic reticulum-resident chaperones modulate the inflammatory and angiogenic responses of endothelial cells. *Br J Dermatol*. 2015 Aug;173(2):416–27.
19. Puxeddu I, Capecchi R, Pratesi F, Cianchetti S, Tavoni A, Migliorini P. Mediators of angiogenesis and fibrosis in IgG4-related disease. *Clin Exp Med*. 2018 May;18(2):245–9.
20. Takeuchi M, Sato Y, Ohno K, Tanaka S, Takata K, Gion Y, et al. T helper 2 and regulatory T-cell cytokine production by mast cells: a key factor in the pathogenesis of IgG4-related disease. *Mod Pathol*. 2014 Aug;27(8):1126–36.
21. Wallace ZS, Mattoo H, Mahajan VS, Kulikova M, Lu L, Deshpande V, et al. Predictors of disease relapse in IgG4-related disease following rituximab. *Rheumatol Oxf Engl*. 2016 Jun;55(6):1000–8.
22. Chen LYC, Mattman A, Seidman MA, Carruthers MN. IgG4-related disease: what a hematologist needs to know. *Haematologica*. 2019 Mar;104(3):444–55.
23. Daverkausen-Fischer L, Pröls F. The function of the co-chaperone ERdj4 in diverse (patho-)physiological conditions. *Cell Mol Life Sci*. 2022;79(1):9.
24. Umehara H, Okazaki K, Kawa S, Takahashi H, Goto H, Matsui S, et al. The 2020 revised comprehensive diagnostic (RCD) criteria for IgG4-RD. *Mod Rheumatol*. 2021 May 4;31(3):529–33.
25. Wallace ZS, Naden RP, Chari S, Choi HK, Della-Torre E, Dicaire JF, et al. The 2019 American College of Rheumatology/European League Against Rheumatism classification criteria for IgG4-related disease. *Ann Rheum Dis*. 2020 Jan 1;79(1):77–87.
26. Shimosegawa T, Chari ST, Frulloni L, Kawa S, Mino-Kenudson M, Kim MH, et al. International Consensus Diagnostic Criteria for Autoimmune Pancreatitis. 2011;40(3):7.

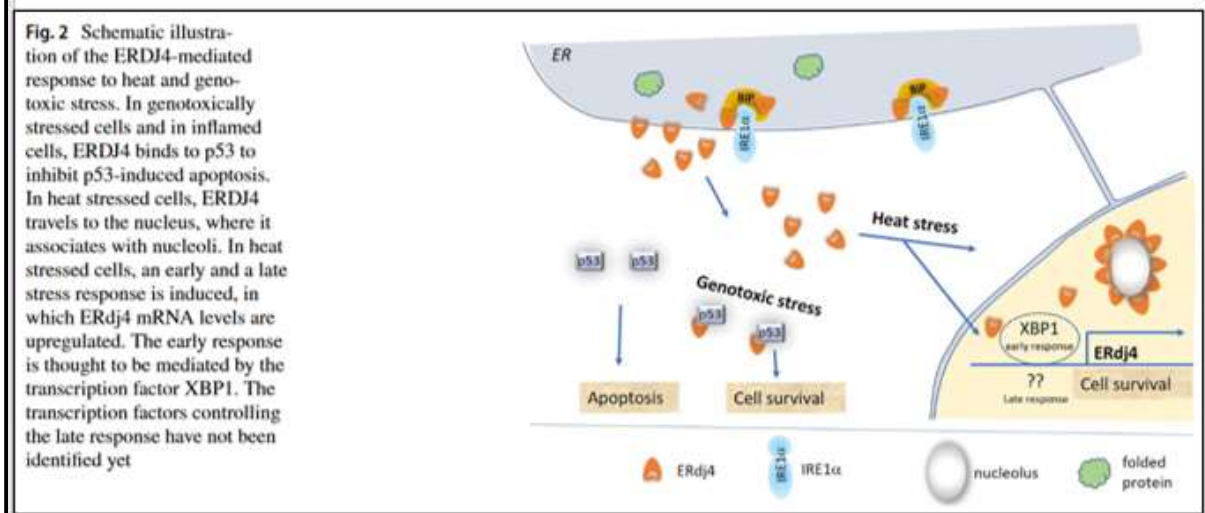
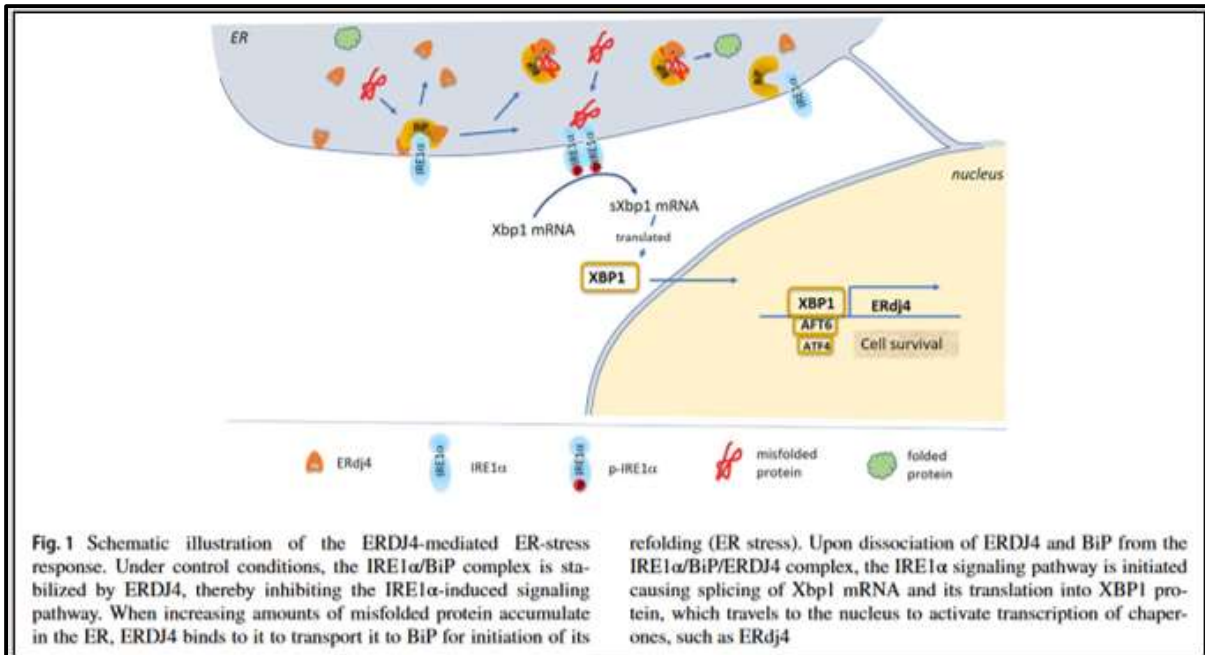
ACKNOWLEDGEMENTS

The authors wish to thank the Immunology Department of *Gabriel Montpied* Teaching Hospital, Clermont-Ferrand, particularly Prof. B. Evrard and Dr. J. Cosme for helping with data collection. We thank also the Internal Medicine Departments of *Gabriel Montpied* and *Estaing* Teaching Hospitals, particularly Prof. M. André, Prof. M. Ruivard, Dr. V. Rieu, Dr. P. Smets, Dr. V. Grobost, Dr. G. Le Guenno, Dr. L. Olagne, Dr. H. Lobbes and Dr. M. Clément for their help with patient recruitment. We thank the Pathology Departments of *Gabriel Montpied* and *Estaing* Teaching Hospitals, Clermont-Ferrand, for their support, particularly Mr. W. Glaziou for his much-appreciated help with sample screening, Mrs. M. Pirol and Mrs. M-P. Terras for their work with sample processing, Dr. C. Darcha for supporting this study and Junior Dr. V. Mattutzu for her help with pathology slides reading. Finally, we thank M. B. Pereira for his invaluable help with statistics.

APPENDICES



Appendix I: Manifestations of IgG4-related disease(22)



Appendix II: Illustration of DNAJB9 functions in cell survival. Implications of DNAJB9 in (Fig.1) ER-stress response and (Fig.2) heat and genotoxic stress response(23).

Table 2. The 2020 Revised comprehensive diagnostic (RCD) criteria for IgG4-RD.

<p>[Item 1] clinical and radiological features One or more organs show diffuse or localized swelling or a mass or nodule characteristic of IgG4-RD. In single organ involvement, lymph node swelling is omitted.</p> <p>[Item 2] serological diagnosis Serum IgG4 levels greater than 135 mg/dl.</p> <p>[Item 3] pathological diagnosis Positivity for two of the following three criteria: ① Dense lymphocyte and plasma cell infiltration with fibrosis. ② Ratio of IgG4-positive plasma cells /IgG-positive cells greater than 40% and the number of IgG4-positive plasma cells greater than 10 per high powered field ③ Typical tissue fibrosis, particularly storiform fibrosis, or obliterative phlebitis</p> <p>Diagnosis: Definite: 1) +2) +3) Probable: 1) +3): Possible: 1) +2)</p>

Explanatory note 1: Combination of organ-specific diagnostic criteria*.

Patients with a possible or probable diagnosis by comprehensive diagnostic criteria who fulfill the organ-specific criteria for IgG4-RD are regarded as being definite for IgG4-RD.

*Diagnostic criteria according to the IgG4-related organ:

① International consensus diagnostic criteria for autoimmune pancreatitis⁷⁾, ② IgG4-related lacrimal gland, saliva adenitis diagnostic criteria⁸⁾, ③ Diagnostic criteria for IgG4-related kidney disease⁹⁾, ④ Clinical diagnostic criteria of IgG4-related sclerosing cholangitis 2012¹⁰⁾, ⑤ Diagnostic criteria for IgG4-related ophthalmic disease¹¹⁾, ⑥ Diagnostic criteria for IgG4-related respiratory disease¹²⁾, ⑦ Diagnostic criteria for IgG4-related large periarteritis/periarteritis and retroperitoneal fibrosis¹³⁾.

Explanatory note 2: exclusion diagnosis.

1) It is important to acquire tissue samples from each involved organ to distinguish malignant tumors (e.g. cancer, malignant lymphoma) and similar benign conditions (e.g. Sjögren syndrome, primary sclerosing cholangitis, multicentric Castleman's disease, secondary retroperitoneal fibrosis, granulomatosis with polyangiitis, sarcoidosis, eosinophilic granulomatosis with polyangiitis).

2) It is important to exclude an infectious- or inflammation-related disease in patients with high fever, highly elevated CRP and neutrophilia.

Explanatory note 3: pathologic diagnosis.

1) The numbers of IgG4-positive cells are usually more abundant in resected organs and partially enucleated tissue than in tissue samples obtained by needle biopsy or endoscopic biopsy. Thus, it is important to not be too particular about cell number and to provide a precise judgment.

2) Storiform fibrosis is defined as spindle-shaped cells, inflammatory cells and fine collagen fibers forming a flowing arrangement. Obliterative phlebitis is defined as fibrous venous obliteration with inflammatory cells. Both are helpful for a diagnosis of IgG4-RD. ① and ③ without ② can only be applied in a case with poor IgG4 and/or IgG staining.

Explanatory note 4: steroid reactivity.

Steroid trial is not recommended. However, if patients do not respond to initial steroid therapy, the diagnosis should be reconsidered.

Appendix III: The 2020 Revised Comprehensive Diagnostic criteria for IgG4-related disease(24)

Table 4. The 2019 American College of Rheumatology/European League Against Rheumatism classification criteria for IgG4-related disease

Step	Categorical assessment or numeric weight
Step 1. Entry criteria	Yes† or No
Characteristic* clinical or radiologic involvement of a typical organ (e.g., pancreas, salivary glands, bile ducts, orbits, kidney, lung, aorta, retroperitoneum, pachymeninges, or thyroid gland [Riedel's thyroiditis]) OR pathologic evidence of an inflammatory process accompanied by a lymphoplasmacytic infiltrate of uncertain etiology in one of these same organs	
Step 2. Exclusion criteria: domains and items‡	Yes or No§
<i>Clinical</i>	
Fever	
No objective response to glucocorticoids	
<i>Serologic</i>	
Leukopenia and thrombocytopenia with no explanation	
Peripheral eosinophilia	
Positive antineutrophil cytoplasmic antibody (specifically against proteinase 3 or myeloperoxidase)	
Positive SSA/Ro or SSB/La antibody	
Positive double-stranded DNA, RNP, or Sm antibody	
Other disease-specific autoantibody	
Cryoglobulinemia	
<i>Radiologic</i>	
Known radiologic findings suspicious for malignancy or infection that have not been sufficiently investigated	
Rapid radiologic progression	
Long bone abnormalities consistent with Erdheim-Chester disease	
Splenomegaly	
<i>Pathologic</i>	
Cellular infiltrates suggesting malignancy that have not been sufficiently evaluated	
Markers consistent with inflammatory myofibroblastic tumor	
Prominent neutrophilic inflammation	
Necrotizing vasculitis	
Prominent necrosis	
Primarily granulomatous inflammation	
Pathologic features of macrophage/histiocytic disorder	
<i>Known diagnosis of the following:</i>	
Multicentric Castleman's disease	
Crohn's disease or ulcerative colitis (if only pancreaticobiliary disease is present)	
Hashimoto thyroiditis (if only the thyroid is affected)	
If case meets entry criteria and does not meet any exclusion criteria, proceed to step 3.	
Step 3. Inclusion criteria: domains and items¶	
<i>Histopathology</i>	
Uninformative biopsy	0
Dense lymphocytic infiltrate	+4
Dense lymphocytic infiltrate and obliterative phlebitis	+6
Dense lymphocytic infiltrate and storiform fibrosis with or without obliterative phlebitis	+13
<i>Immunostaining#</i>	0–16, as follows:
	Assigned weight is 0 if the IgG4+ : IgG+ ratio is 0–40% or indeterminate and the number of IgG4+ cells/hpf is 0–9.**
	Assigned weight is 7 if 1) the IgG4+ : IgG+ ratio is ≥41% and the number of IgG4+ cells/hpf is 0–9 or indeterminate; or 2) the IgG4+ : IgG+ ratio is 0–40% or indeterminate and the number of IgG4+ cells/hpf is ≥10 or indeterminate.
	Assigned weight is 14 if 1) the IgG4+ : IgG+ ratio is 41–70% and the number of IgG4+ cells/hpf is ≥10; or 2) the IgG4+ : IgG+ ratio is ≥71% and the number of IgG4+ cells/hpf is 10–50.
	Assigned weight is 16 if the IgG4+ : IgG+ ratio is ≥71% and the number of IgG4+ cells/hpf is ≥51.

(Continued)

*Appendix IV: The 2019 ACR/EULAR classification criteria for IgG4-related disease(25)
(continued on the next page)*

Step	Categorical assessment or numeric weight
Serum IgG4 concentration	
Normal or not checked	0
> Normal but <2x upper limit of normal	+4
2–5x upper limit of normal	+6
>5x upper limit of normal	+11
Bilateral lacrimal, parotid, sublingual, and submandibular glands	
No set of glands involved	0
One set of glands involved	+6
Two or more sets of glands involved	+14
Chest	
Not checked or neither of the items listed is present	0
Peribronchovascular and septal thickening	+4
Paravertebral band-like soft tissue in the thorax	+10
Pancreas and biliary tree	
Not checked or none of the items listed is present	0
Diffuse pancreas enlargement (loss of lobulations)	+8
Diffuse pancreas enlargement and capsule-like rim with decreased enhancement	+11
Pancreas (either of above) and biliary tree involvement	+19
Kidney	
Not checked or none of the items listed is present	0
Hypocomplementemia	+6
Renal pelvis thickening/soft tissue	+8
Bilateral renal cortex low-density areas	+10
Retroperitoneum	
Not checked or neither of the items listed is present	0
Diffuse thickening of the abdominal aortic wall	+4
Circumferential or anterolateral soft tissue around the infrarenal aorta or iliac arteries	+8
Step 4: Total inclusion points	
A case meets the classification criteria for IgG4-RD if the entry criteria are met, no exclusion criteria are present, and the total points is ≥20.	
* Refers to enlargement or tumor-like mass in an affected organ except in 1) the bile ducts, where narrowing tends to occur, 2) the aorta, where wall thickening or aneurysmal dilatation is typical, and 3) the lungs, where thickening of the bronchovascular bundles is common.	
† If entry criteria are not fulfilled, the patient cannot be further considered for classification as having IgG4-related disease (IgG4-RD).	
‡ Assessment for the presence of exclusion criteria should be individualized depending on a patient's clinical scenario.	
§ If exclusion criteria are met, the patient cannot be further considered for classification as having IgG4-RD.	
¶ Only the highest-weighted item in each domain is scored.	
# Biopsies from lymph nodes, mucosal surfaces of the gastrointestinal tract, and skin are not acceptable for use in weighting the immunostaining domain.	
** "Indeterminate" refers to a situation in which the pathologist is unable to clearly quantify the number of positively staining cells within an infiltrate yet can still ascertain that the number of cells is at least 10/high-power field (hpf). For a number of reasons, most often pertaining to the quality of the immunostain, pathologists are sometimes unable to count the number of IgG4+ plasma cells with precision yet even so, can be confident in grouping cases into the appropriate immunostaining result category.	

Appendix IV: The 2019 ACR/EULAR classification criteria for IgG4-related disease(25)

TABLE 1. Diagnosis of Definitive and Probable Type 1 AIP Using ICDC

Diagnosis	Primary Basis for Diagnosis	Imaging Evidence	Collateral Evidence
Definitive type 1 AIP	Histology	Typical/indeterminate	Histologically confirmed LPSP (level 1 H)
	Imaging	Typical Indeterminate	Any non-D level 1/level 2 Two or more from level 1 (+level 2 D*)
	Response to steroid	Indeterminate	Level 1 S/OOI + Rt or level 1 D + level 2 S/OOI/H + Rt
Probable type 1 AIP		Indeterminate	Level 2 S/OOI/H + Rt

*Level 2 D is counted as level 1 in this setting.

TABLE 2. Level 1 and Level 2 Criteria for Type 1 AIP

Criterion	Level 1	Level 2
P Parenchymal imaging	Typical; Diffuse enlargement with delayed enhancement (sometimes associated with rim-like enhancement)	Indeterminate (including atypical [†]); Segmental/focal enlargement with delayed enhancement
D Ductal imaging (ERP)	Long (>1/3 length of the main pancreatic duct) or multiple strictures without marked upstream dilatation	Segmental/focal narrowing without marked upstream dilatation (duct size, <5 mm)
S Serology	IgG4, >2× upper limit of normal value	IgG4, 1–2× upper limit of normal value
OOI Other organ involvement	a or b a. Histology of extrapancreatic organs Any three of the following: (1) Marked lymphoplasmacytic infiltration with fibrosis and without granulocytic infiltration (2) Storiform fibrosis (3) Obliterative phlebitis (4) Abundant (>10 cells/HIPF) IgG4-positive cells b. Typical radiological evidence At least one of the following: (1) Segmental/multiple proximal (hilar/intrahepatic) or proximal and distal bile duct stricture (2) Retroperitoneal fibrosis	a or b a. Histology of extrapancreatic organs including endoscopic biopsies of bile duct [‡] : Both of the following: (1) Marked lymphoplasmacytic infiltration without granulocytic infiltration (2) Abundant (>10 cells/HIPF) IgG4-positive cells b. Physical or radiological evidence At least one of the following: (1) Symmetrically enlarged salivary/lachrymal glands (2) Radiological evidence of renal involvement described in association with AIP
H Histology of the pancreas	LPSP (core biopsy/resection) At least 3 of the following: (1) Periductal lymphoplasmacytic infiltrate without granulocytic infiltration (2) Obliterative phlebitis (3) Storiform fibrosis (4) Abundant (>10 cells/HIPF) IgG4-positive cells	LPSP (core biopsy) Any 2 of the following: (1) Periductal lymphoplasmacytic infiltrate without granulocytic infiltration (2) Obliterative phlebitis (3) Storiform fibrosis (4) Abundant (>10 cells/HIPF) IgG4-positive cells
Response to steroid (Rt)*	Diagnostic steroid trial Rapid (≤2 wk) radiologically demonstrable resolution or marked improvement in pancreatic/extrapancreatic manifestations	

*Diagnostic steroid trial should be conducted carefully by pancreatologists with caveats (see text) only after negative workup for cancer including endoscopic ultrasound-guided fine needle aspiration.

[†]Atypical: Some AIP cases may show low-density mass, pancreatic ductal dilatation, or distal atrophy. Such atypical imaging findings in patients with obstructive jaundice and/or pancreatic mass are highly suggestive of pancreatic cancer. Such patients should be managed as pancreatic cancer unless there is strong collateral evidence for AIP, and a thorough workup for cancer is negative (see algorithm).

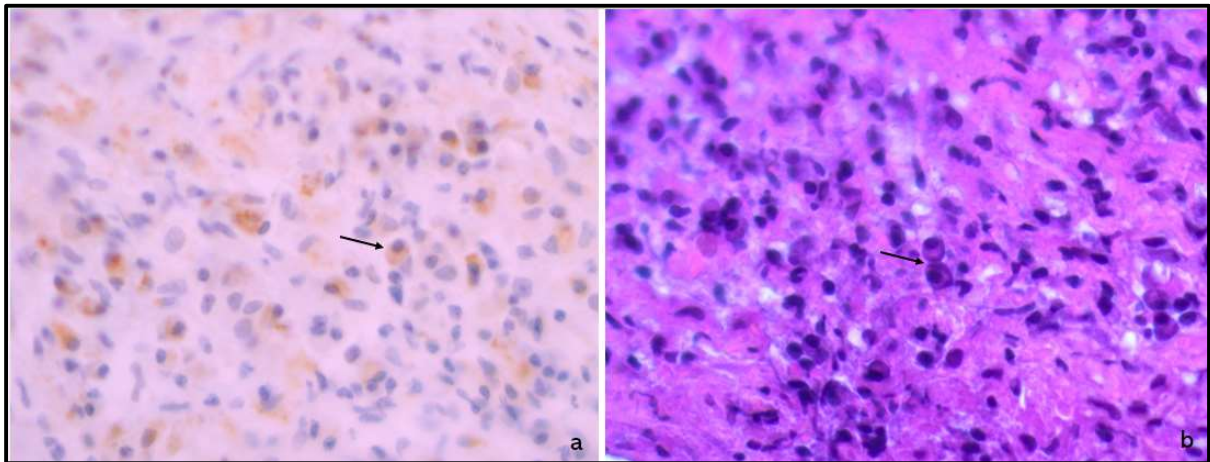
[‡]Endoscopic biopsy of duodenal papilla is a useful adjunctive method because ampulla often is involved pathologically in AIP.

Appendix V: International Consensus Diagnostic Criteria for Autoimmune Pancreatitis(26)

Table 2. Immunohistochemical expression of DNAJB9 in normal tissue

Organ system	Location of DNAJB9 positivity
Central nervous system	
Cerebral cortex	Neurons (variably fine to coarsely granular CS)
Digestive system	
Stomach, small and large intestine	Entero-endocrine cells (coarsely granular CS); Epithelial cells (finely granular CS)
Liver	Sinusoidal endothelial cells (variably fine to coarsely granular CS)
Pancreas	Acinar cells (variably fine to coarsely granular CS)
Respiratory system	
Lung	Epithelial cells (finely granular CS)
Endocrine system	
Pituitary (adenohypophysis)	Subset of adenohypophyseal cells (variably finely to coarsely granular CS)
Thyroid	Epithelial cells (finely granular CS)
Parathyroid	Endothelial cells (finely granular CS)
Adrenal	Secretory cells of medulla (variably fine to coarsely granular CS)
Lymphoid system	
Spleen	Splenic cord (variably finely granular CS)
Tonsil	Small lymphocytes (variably finely granular CS)
Lymph node	Small lymphocytes of paracortex (variably finely granular CS)
Thymus	Small lymphocytes in the medulla (finely granular CS)
Female reproductive system	
Endometrium, Fallopian tube	Epithelial cells (finely granular CS)
Ovary	Endothelial cells (finely granular CS)
Placenta (term)	Syncytiotrophoblasts (variably finely granular CS)
Mammary glands	Alveolar and ductal epithelial cells and myoepithelial cells (finely granular CS)
Male reproductive system	
Testis	Primary spermatocytes and spermatids (finely granular CS)
Prostate	Fibromuscular stroma (finely granular CS)
Urinary System	
Kidney	Tubular epithelium and podocytes and mesangial cells and endothelial cells (variably finely granular CS), vascular smooth muscle cells
Ureter	Smooth muscle cells and urothelium (finely granular CS)
Skeletal muscle	(finely granular CS)

CS, cytoplasmic staining.



Appendix VII: Plasma cells. (a) immunohistochemistry and (b) hematoxylin and eosin stain showing plasma cells (arrows) in a pleural sample from a patient with IgG4-related pleural involvement. (a,b, magnification x400.)

SERMENT D'HIPPOCRATE

Au moment d'être admis(e) à exercer la médecine, je promets et je jure d'être fidèle aux lois de l'honneur et de la probité.

Mon premier souci sera de rétablir, de préserver ou de promouvoir la santé dans tous ses éléments, physiques et mentaux, individuels et sociaux.

Je respecterai toutes les personnes, leur autonomie et leur volonté, sans aucune discrimination selon leur état ou leurs convictions. J'interviendrai pour les protéger si elles sont affaiblies, vulnérables ou menacées dans leur intégrité ou leur dignité. Même sous la contrainte, je ne ferai pas usage de mes connaissances contre les lois de l'humanité.

J'informerai les patients des décisions envisagées, de leurs raisons et de leurs conséquences.

Je ne tromperai jamais leur confiance et n'exploiterai pas le pouvoir hérité des circonstances pour forcer les consciences.

Je donnerai mes soins à l'indigent et à quiconque me les demandera. Je ne me laisserai pas influencer par la soif du gain ou la recherche de la gloire.

Admis(e) dans l'intimité des personnes, je tairai les secrets qui me seront confiés. Reçu(e) à l'intérieur des maisons, je respecterai les secrets des foyers et ma conduite ne servira pas à corrompre les mœurs.

Je ferai tout pour soulager les souffrances. Je ne prolongerai pas abusivement les agonies. Je ne provoquerai jamais la mort délibérément.

Je préserverai l'indépendance nécessaire à l'accomplissement de ma mission. Je n'entreprendrai rien qui dépasse mes compétences. Je les entretiendrai et les perfectionnerai pour assurer au mieux les services qui me seront demandés.

J'apporterai mon aide à mes confrères ainsi qu'à leurs familles dans l'adversité.

Que les hommes et mes confrères m'accordent leur estime si je suis fidèle à mes promesses ; que je sois déshonoré(e) et méprisé(e) si j'y manque.

Nom, Prénom

Signature

SERMENT D'HIPPOCRATE

En présence des Maîtres de cette FACULTE et de mes chers CONDISCIPLES, je promets et je jure d'être fidèle aux lois de l'Honneur et de la Probité dans l'exercice de la Médecine.

Je donnerai mes soins gratuits à l'indigent et je n'exigerai jamais un salaire au-dessus de mon travail. Admis dans l'intérieur des maisons, mes yeux ne verront pas ce qui s'y passe, ma langue taira les secrets qui me seront confiés et mon état ne servira pas à corrompre les mœurs ni à favoriser le crime.

Respectueux et reconnaissant envers mes MAÎTRES, je rendrai à leurs enfants l'instruction que j'ai reçue de leurs pères.

Que les HOMMES m'accordent leur estime si je suis fidèle à mes promesses. Que je sois couvert d'OPPROBRE et méprisé de mes confrères si j'y manque.

Nom, Prénom

Signature

Immunohistochemical expression of DNAJB9 in IgG4-related disease

Introduction. Immunoglobulin G4-related disease (IgG4-RD) is a rare immune-mediated condition with expansion of plasmablasts/plasma cells and possible upregulation of *DNAJB9*. *DNAJB9* (a co-chaperone protein that governs the integrity and functions of cells) was described as a specific marker for fibrillary glomerulonephritis, a rare proliferative form of glomerulonephritis displaying histological similarities with IgG4-related kidney disease. *DNAJB9* may be a putative autoantigen. We aimed to study the immunohistochemical expression of *DNAJB9* in IgG4-RD to explore its role in disease pathophysiology.

Methods. We selected patients with definite IgG4-RD (RCD, ACR/EULAR or ICDC classification criteria), non-auto-immune (NAI) controls and Sjögren's syndrome controls, and produced tissue slides for anti-*DNAJB9* immunohistochemistry on which we performed double reading and applied our intensity scoring system ranging from 0 to 4. Our positive control was a renal sample suggestive of fibrillary glomerulonephritis.

Results. We studied the tissue slides of 9 IgG4-RD patients and 15 NAI controls (including salivary gland, pancreatic, pulmonary, pleural, and retroperitoneal fibrotic tissue). Median intensity for endothelial cells was 0 in IgG4-RD and 2 in NAI controls ($p < 0.01$). In each group, it was 3 for ductal epithelial cells ($p = 0.60$), 2 for glandular epithelial cells ($p = 0.26$) and 3 for inflammatory cells ($p = 0.74$). All samples displayed a cytoplasmic and granular immunohistochemical staining pattern, with no difference between the 2 groups.

Conclusions. There was no difference in terms of staining intensity for *DNAJB9* between IgG4-RD patients and NAI controls regarding ductal and glandular epithelial cells and inflammatory cells. Surprisingly, endothelial cells showed significantly weaker staining in IgG4-RD, suggesting loss of *DNAJB9* expression in those cells. The underlying mechanisms are unclear but the endostatin and regulatory T cell pathways could be partially explanatory and raise interest for further exploration.

Key words: IgG4-related disease, *DNAJB9*, endothelial cells, immunohistochemical intensity scoring system