



**HAL**  
open science

# Impact de la crise COVID 19 sur la présentation clinique initiale des cancers solides nouvellement diagnostiqués : une revue systématique de la littérature et une méta-analyse

Simon Marty

## ► To cite this version:

Simon Marty. Impact de la crise COVID 19 sur la présentation clinique initiale des cancers solides nouvellement diagnostiqués : une revue systématique de la littérature et une méta-analyse. Médecine humaine et pathologie. 2023. dumas-04470482

**HAL Id: dumas-04470482**

**<https://dumas.ccsd.cnrs.fr/dumas-04470482>**

Submitted on 21 Feb 2024

**HAL** is a multi-disciplinary open access archive for the deposit and dissemination of scientific research documents, whether they are published or not. The documents may come from teaching and research institutions in France or abroad, or from public or private research centers.

L'archive ouverte pluridisciplinaire **HAL**, est destinée au dépôt et à la diffusion de documents scientifiques de niveau recherche, publiés ou non, émanant des établissements d'enseignement et de recherche français ou étrangers, des laboratoires publics ou privés.



Distributed under a Creative Commons Attribution - NonCommercial - NoDerivatives 4.0 International License

## **AVERTISSEMENT**

Cette thèse d'exercice est le fruit d'un travail approuvé par le jury de soutenance et réalisé dans le but d'obtenir le diplôme d'Etat de docteur en médecine. Ce document est mis à disposition de l'ensemble de la communauté universitaire élargie.

Il est soumis à la propriété intellectuelle de l'auteur. Ceci implique une obligation de citation et de référencement lors de l'utilisation de ce document.

D'autre part, toute contrefaçon, plagiat, reproduction illicite encourt toute poursuite pénale.

Code de la Propriété Intellectuelle. Articles L 122.4

Code de la Propriété Intellectuelle. Articles L 335.2 - L 335.10

**UNIVERSITÉ PARIS CITÉ**

Faculté de Santé

**UFR de Médecine**

**Année 2023**

**N°**

**THÈSE POUR LE DIPLÔME D'ÉTAT DE DOCTEUR EN MÉDECINE**

Présentée et soutenue publiquement le : 15 Décembre 2023.

Par

**Simon MARTY**

**Impact of the Sars-Cov 2 outbreak on the initial clinical presentation  
of new solid cancer diagnoses: A systematic review and meta-  
analysis.**

Dirigée par Mme. La Docteure Emmanuelle KEMPF

JURY

M. le Professeur Luc MOUTHON	Président
Mme la Docteure Emmanuelle KEMPF	Directrice
M. le Professeur Christophe TOURNIGAND	Membre du jury
M. le Professeur Gilles CHATELLIER	Membre du jury
Mme la Docteure Ines HACINI	Membre du jury
M. le Docteur Benjamin SUBRAN	Membre du jury

# Table des matières

---

REMERCIEMENTS .....	1
INTRODUCTION GENERALE.....	9
RESUME ET INDEXATION EN FRANÇAIS .....	18
RESUME ET INDEXATION EN ANGLAIS .....	20
LISTE DES ABREVIATIONS .....	22
BACKGROUND.....	24
1 : MATERIAL AND METHOD .....	25
2 : RESULTS.....	28
3 : DISCUSSION .....	38
4 : CONCLUSION .....	43
CONCLUSION GENERALE.....	44
BIBLIOGRAPHIE .....	50
TABLE DES FIGURES.....	63
SUPPLEMENTARY MATERIALS.....	64

## Remerciements

---

### ***A Mme. la Docteure Emmanuelle KEMPF,***

Pour ton soutien remarquable, ta confiance, ta patience, ta bienveillance ; mais aussi pour ta rigueur et pour m'avoir tant appris. Pour ton influence dans ma façon de travailler, de voir la médecine, de comprendre les sciences. Pour tous les souvenirs inoubliables générés par ce travail intense, toutes ces belles rencontres. Pour avoir été là du premier au dernier jour, tout en l'étant aussi pour de si nombreux étudiants. Pour nous avoir fait avancer, quelles que soient les circonstances, toujours en étant si douce. Pour chaque petite seconde que tu m'as accordée, en visio, ou dans le bureau autour d'une tasse de thé. Pour Marie, et pour tout le reste. Un chapitre entier de remerciements ne serait pas suffisant. Je te dois tellement, et je n'oublierais jamais.

### ***À M. le Professeur Luc Mouthon,***

Pour avoir accepté d'être le Président de mon jury, c'est réellement un très grand honneur. Pour tout ce que vous faites pour les internes de Médecine Interne, et pour la Spécialité. Pour m'avoir reçu dans les moments difficiles, et pour les conseils précieux que vous m'avez alors donnés. Merci d'être un grand exemple en Médecine.

### ***À M. le Professeur Christophe TOURNIGAND,***

Pour la confiance que vous m'avez toujours accordée lors de mon passage dans votre service, et pour avoir été un Patron si inspirant dans son approche de la médecine, ses relations avec ses patients et ses étudiants. Mais aussi pour la confiance tout au long de ce travail, pour avoir été au premier rang lors de sa présentation à Madrid. Merci d'avoir cru en moi.

**À M. le Professeur Gilles CHATELLIER,**

Pour tes conseils avisés, ton soutien et l'apport de ton expertise tout au long de ce travail.

Tu as été d'une grande aide, merci d'avoir trouvé du temps pour moi. Cela a été un très grand honneur de travailler à tes côtés.

**À M. le Docteur Benjamin SUBRAN,**

Pour m'avoir conforté dans mon choix de spécialité en étant un Maître et un modèle exemplaire dans ton approche de la médecine, et pour avoir été présent en ami dans les moments les plus durs. Pour avoir aussi été un exemple de ténacité, de courage, et pour nous avoir prouvé qu'il y a toujours le soleil après l'orage. C'est un privilège d'être ton ami.

**À Mme. La Docteure Ines HACINI,**

Pour ton soutien et ton amitié depuis mes premiers pas d'interne en médecine, pour avoir été avec toute l'équipe du 9<sup>ème</sup> une véritable seconde famille pendant 6 mois, et pour tout ce que tu m'as apporté en médecine. « Ines est une grande chef » m'avait dit le Professeur Godeau. Je crois qu'il n'y a pas de meilleure description. Et pourtant tu es tellement plus.

Merci d'être à mes côtés pour cette thèse, comme tu l'as été au tout début de cet internat.

A Guillaume Lamé,

Pour toute ton aide, si précieuse, pour tout le temps que tu m'as accordé durant tout ce travail, pour ton humilité, ta gentillesse, ta grande intelligence. Rien de tout cela n'aurait été possible sans toi. Je te dois un milliard de mercis.

A Sonia Priou et Etienne Guevel,

Pour leur aide tout au long de ce travail, merci d'avoir été d'un si grand support.

Au Dr. Pierre Charles,

Pour m'accompagner depuis les débuts de mon internat en tant que tuteur, en étant toujours source de précieux conseils.

Aux équipes des services d'endocrinologie, d'oncologie et de rhumatologie de l'hôpital Henri Mondor, à l'équipe de Médecine Interne de l'hôpital de La Croix Saint Simon, avec qui travailler et apprendre m'a permis de grandir, toujours dans la bienveillance.

A mes chefs,

Quentin, Clara, Aline, Hélène, Pauline, pour tout ce que vous m'avez apporté, tant sur le plan médical qu'humain. Vous avoir comme chefs était un plaisir, vous avoir comme amis est un honneur.

A mes co-internes incroyables,

Aurélié et Clémentine, mes combattantes du COVID en infectiologie au plus dur de la pandémie, grâce à vous, Melun n'était pas si loin.

Chanthon Phum, mon frère de l'autre bout du monde, tu es un modèle de courage. Le Cambodge a de la chance d'avoir un médecin comme toi. Un jour nous retravaillerons ensemble en écoutant de la musique, mais je ne mangerai toujours pas de gâteaux aux Durians.

Nazim et Laura sans qui les premiers pas dans l'internat n'auraient pas été pareils. Il n'y a pas eu un seul jour triste avec vous. Travailler ensemble fut un véritable plaisir.

Xavier, Samir, Julie et Anne-Esther, tous des modèles de rigueur débordants de connaissances, j'ai beaucoup appris à vos côtés.

Caroline, Angèle, Corentin, Candie, aka mes « Sacrés » ; Merci d'être comme vous êtes, merci d'être mes amis. Merci d'avoir été et d'être toujours un soutien dans les moments difficiles. Merci d'avoir fait du bureau des internes une seconde maison pendant 6 mois. Merci d'être aussi brillants. Merci, tout simplement.

A ma fiancée, Marie Dorandeu,

Merci d'être le soleil qui rythme mes journées, et d'écrire chaque jour à mes côtés un véritable livre d'aventures. Merci d'être là même avec la distance et les obstacles. Merci d'être une femme aussi courageuse et forte. Merci pour hier, pour aujourd'hui et pour demain. Merci pour Nous.

Je t'aime.

A mes parents, Christine et Jérôme,

Merci d'être toujours là, quoiqu'il arrive. Pour tout l'amour que vous nous donnez, à Sophie et à moi. Pour avoir fait de notre enfance un bonheur. Pour nous avoir construits tels que nous sommes aujourd'hui. Pour nous avoir appris et pour nous apprendre, encore.

Pour être des parents formidables.

A ma petite sœur, Sophie,

Merci d'être la sœur que tu es, merci d'être un exemple de maturité bien qu'étant plus jeune, un exemple d'intelligence, d'humour. Merci d'avoir été une adversaire si pugnace sur Tekken, tu l'aurais été aussi au ski si tu avais pris Georg d'Allemagne.

Merci pour la part de pizza pour mon anniversaire.

Merci pour toute l'enfance à tes côtés et pour tout ce qui est à venir.



A mes grands parents, Jeanine et François,

A toi mamie, jeunesse éternelle, pour être notre encyclopédie vivante, la mémoire de la famille. Pour ton rire à nos bêtises, le thé sur la terrasse, les pachades, ton chocolat chaud. Pour ta grande patience avec moi et l'amour dans tes yeux même si je t'embête.

A toi papy, pour être un exemple de curiosité, quel que soit le sujet, surtout si il touche à la Lozère ou à la médecine. Merci d'avoir été mon premier maître, pour tous ces moments passés dehors à travailler avec toi, à réfléchir ensemble. Tu as fait ces études plus douces.

A mon grand-père René,

Parce que quoi qu'on ait pu faire, tu étais fier. Parce que je sais qu'encore aujourd'hui tu nous regardes, quelque part. Parce que tu es toujours là.

Pour tout ce que tu nous a appris, pour tout l'amour que tu nous as donné.

Pour la pêche, les poulets du Dimanche, les Noël's plus beaux.

Tu nous manques terriblement. Ce travail est pour toi.

A mon oncle Thierry, ma tante Sandra et ma cousine Clara,

A toi Thierry, pour ta si grande influence, pour m'avoir fait rêver avec les 121 puis Bigsby, avec un son de strat inimitable qui accompagne tous les moments de ma vie. Pour ton humilité, ton courage qui n'a d'égal que ton talent, ton humour. Tu sais que c'est pas mal ?

A toi Sandra, tellement forte, merci d'être venue renforcer notre famille. Si douce dans la vie, si déterminée dans le travail, si attentionnée avec les tiens. Merci d'être un exemple pour tout cela.

A toi ma Clara, merci d'être notre bonheur à tous. Tu grandis bien trop vite, mais tu resteras toujours ma petite cousine.

A mes cousins Juliette et Matthieu ma tante Dominique et mon oncle Eric,

A Matth et Ju, pour tous les souvenirs, et pour ceux que nous construirons. A la confrérie des Mages, au château des Anges, Jack, Rose, Poison Ivy, Heeeeee. Pour les nuits Lozériennes, les étés Catalans, les vacances plus belles.

A Domi pour ton sens de l'accueil, et ta serviabilité, notions si importantes en médecine, et pour nous permettre de nous réunir tous à Grandrieu, les traditions étant le noyau d'une famille.

A Eric pour ton humour, ton sens de la répartie et pour nous montrer chaque jour que suivre sa passion est plus important que tout.

A Marc et Pierrette Milhet, ma famille de l'autre côté de la rue, merci à vous deux d'être toujours là pour nous tous. J'aimerais tant vous donner tout ce que vous nous avez donné. Marc, tu es un exemple de force, de volonté, d'humanité, de gentillesse ; Pierrette un exemple de travail, de perfectionnisme, d'amabilité, mais aussi de cuisine (que tu fais bien mieux qu'une certaine personne soit dit en passant).

A Joel Dorandeu, et à sa famille, Elise, Aubin, Michel, Catherine, Guilhem, Louis et Pierre-Alexis (sans oublier Phoebus), à Dominique Coupan, pour avoir été d'un très grand soutien ces derniers mois, et pour m'avoir aidé à avancer dans la tempête. Faire partie de votre famille est un honneur.

A ma deuxième famille frontonnaise, Agnes Lepers, Adrien Anduze, Emeline Anduze et Guillaume Anduze. Pour toutes ces années et celles à venir, pour tous ces soirs chez vous, notre deuxième maison. Je sais que vous êtes et serez toujours là, et qu'Adrien sera quoi qu'il arrive, le maitre du jeu à Defifoo.

A mes frères, mes musclés, Adrien Cathala, Quentin Brail, Guillaume Henry, comme ma vie a changé depuis que je vous connais. J'ai du mal à trouver des remerciements adéquats tellement vous m'êtes importants. Beaucoup, beaucoup plus que des amis, vous êtes la famille que j'ai choisie, ceux qui sont toujours là, quoi qu'il arrive, ceux avec qui on pourrait partir à la guerre les yeux fermés. Je me souviens de chaque instant passé avec vous (sauf peut-être quelques fins de nuits en remontant du Beach). Vous êtes une source constante de motivation, chacun étant un crack dans son domaine. Vous savez donner du temps au temps et vous êtes extrêmement respectueux des uns et des autres comme dirait Eric Favre. Ne changez jamais rien les frérots, je vous admire et surtout je vous aime.

A mes frérots de médecine, Grégoire Van Straaten et Pierre Henri Cazarre, merci d'avoir fait de ces études l'un des plus beaux moments de ma vie. Traverser toutes ces épreuves ensemble a fait de nous bien plus que des amis. Se dire que le meilleur est à venir, avec vous à mes côtés, est une source de motivation tous les jours. Vous êtes en plus de cela des modèles en tant que médecins, mais aussi en tant qu'amateurs de très bons vins. Vous aussi ne changez rien mes sangliers sauvages, ensemble on retournera tout dans le midi, le long des dunes.

A Terry Boutte, mon Chef, mon frérot. Car tout ton talent et ton génie sont une source d'admiration, de même que ta volonté et la passion de ton métier. Tu as beau être à Montréal, tu n'es pas plus éloigné que lorsque tu étais à Pourradel.

A tout ceux qui ont rendu ces dernières années inoubliables, Raphael Austray et Florent Portet, avec qui nous avons fondé la FDEH partagé des moments incroyables partout à bord de Monique, en compagnie de Yannick Bouchaut (YLB pour les intimes) ; Solenn Le Draoullec, Chloé Combacau, Pauline Roby Chapelet les déesses de la FDEH, Edouard Massip, Thomas Mouisset et Juliette Le Vourch mes irréductibles du banc du fond en PACES, Nicolas Croizet, Louis Calvet, sans qui l'Espagne ne serait pas l'Espagne, à tous mes galériens de Fronton, à Thibault Martin, mon Chachou voisin Aveyronnais, avec qui la vie parisienne est tellement plus belle.

Ce travail de thèse a fait l'objet :

- D'une communication orale « Proffered Paper » au congrès international de l'ESMO (European Society of Medical Oncology) à Madrid en Octobre 2023 : Abstract 16900, présentation interactive : <https://esmocongress.esmo.org/esmo/esmo2023/en-GB/presentation/638219>



- D'une publication dans BMC Cancer : « Impact of the Sars Cov 2 outbreak on the initial clinical presentation of new solid cancer diagnoses : A systematic review and meta-analysis » par Simon Marty, Guillaume Lame, Gilles Chatelier, Etienne Guevel, Sonia Priou, Christophe Tournigand et Emmanuelle Kempf.



## I. Introduction générale

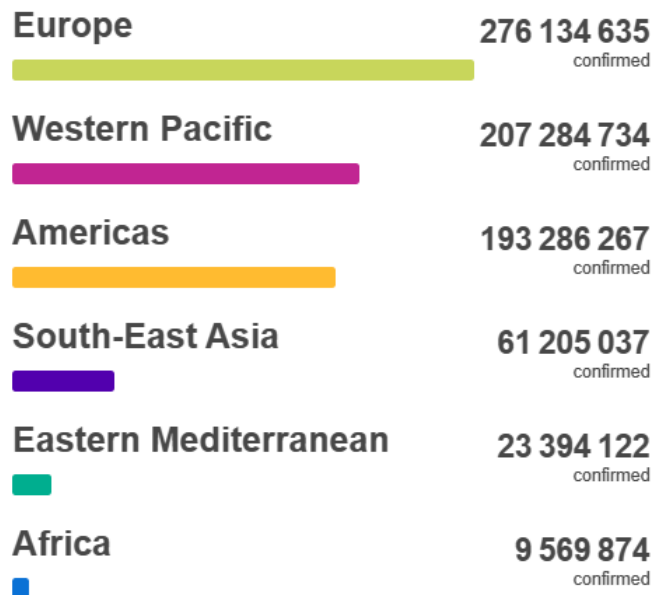
En décembre 2019, dans la région de Wuhan en Chine, apparaissent des cas de pneumopathies sévères dont l'agent infectieux semble inconnu. Rapidement identifié comme un coronavirus appelé Severe Acute Respiratory Syndrome Coronavirus 2 (Sars Cov 2), l'infection médiée par ce pathogène est nommée COVID 19 (Coronavirus Disease 2019). Se propageant tout d'abord en Chine et dans les pays frontaliers, l'OMS (Organisation Mondiale de la Santé) déclare l'état de pandémie le 11 mars 2020 (1). Par sa rapidité d'expansion à l'échelle mondiale, sa gravité clinique potentielle, et l'absence d'arsenal thérapeutique d'efficacité prouvée entraînant de nombreuses controverses dans le monde scientifique dans les premiers mois, la COVID 19 représente la plus importante crise sanitaire que le monde ait connu depuis la grippe espagnole au début du XX<sup>ème</sup> siècle (2). Sur le plan clinique, cette infection se caractérise par une transmission par aérosolisation et une diversité importante de symptômes, dont la gravité dépend grandement du terrain sur lequel elle survient. Ainsi, si un tiers des patients atteints présentent des formes asymptomatiques, l'infection à Sars Cov 2 peut également se manifester dans la majorité des cas (environ 50%) par une symptomatologie dite « modérée » caractérisée par de la fièvre (45 à 80% des patients), de la toux (49 à 65% des cas), une anosmie (59% des cas), une symptomatologie intestinale avec diarrhée, douleurs

abdominales (12% des cas), une altération de l'état général, des céphalées, une angine... (3),(4). Enfin, au cours des premières vagues, environ 15% des patients développent des formes dites « sévères », et 5% de formes « critiques », conséquences de la réponse inflammatoire explosive consécutive à l'infection, caractérisées par un syndrome de détresse respiratoire aiguë et/ou des défaillances multiviscérales (encéphalite, myocardite, insuffisance rénale aiguë, insuffisance surrénalienne aiguë, insuffisance hépatique, pancréatique...) nécessitant des transferts en réanimation (5).

Devant cette situation sanitaire sans précédent, les gouvernements de plus de 90 pays mettent en place des stratégies de prévention non médicamenteuses avec plus ou moins de réactivité, dès début 2020 (6). Ces stratégies comprenaient des mesures de distanciation sociale plus ou moins strictes, allant de l'interdiction de rassemblement au confinement national, la fermeture des frontières à certains ressortissants provenant de pays particulièrement affectés, l'aération des espaces confinés, le port du masque en réunion, le lavage des mains à la solution hydro alcoolique, le dépistage obligatoire au moindre symptôme ou contact prolongé avec un cas suspect ou déclaré (7). Malgré ces mesures et l'arrivée sur le marché de vaccins ainsi que de recommandations de traitement médicamenteux, la COVID 19 reste malgré tout une infection virulente et potentiellement mortelle. En effet, l'OMS fait état, au 1<sup>er</sup> octobre

2023, de 770 874 669 cas déclarés pour 6 959 303 décès, inégalement répartis à la surface du globe (Figure A) (8).

### Situation by WHO Region



Source: World Health Organization

Figure A : Situation épidémique des cas déclarés de COVID 19 au 1er octobre 2023 à l'échelle mondiale

(source : Organisation Mondiale de la Santé)

Au-delà de ses conséquences propres en tant que maladie infectieuse, la prise en charge de toutes les pathologies chroniques fut impactée par les décisions politiques relatives à la prévention de la COVID 19, et la peur causée par la virulence du virus. En effet, dès les premiers mois de l'état de pandémie, par mesure de protection des populations les plus fragiles et comorbides, l'accès aux soins fut restreint aux soins les plus urgents, entraînant une déprogrammation massive des soins chirurgicaux, des consultations de suivis, des programmes de dépistage (9). Cet impact n'a pas épargné la discipline de l'oncologie.

Or, les cancers constituent l'une des premières causes de mortalité dans le monde au premier rang desquels le cancer du poumon (1,80 millions de décès par an), le cancer colorectal (916 000 décès par an), le cancer du foie (830 000 décès par an), le cancer de l'estomac (769 000 décès par an), le cancer du sein (685 000 décès par an) (10). Ils constituent des pathologies chroniques dont la prise en charge pluridisciplinaire implique des équipes chirurgicales, médicales, pharmaceutiques et d'imagerie ainsi qu'un suivi rigoureux et régulier sur le plan clinique, radiologique, et biologique. Devant la gravité de ces pathologies une fois diagnostiquées, une histoire naturelle assez bien connue, une fréquence et une mortalité importantes, de nombreux pays ont mis en place, au fil des années, des programmes nationaux de dépistages standardisés en vue de diminuer la mortalité spécifique des cancers concernés (Table A).



Table A. Liste des programmes nationaux de dépistages de cancers organisés, par pays<sup>(11)</sup>.

Country	Organization (Type)	Year	Test	40-44	45-49	50-54	55-59	60-64	65-69	70-74	75+
United States <sup>1</sup>	US Preventive Services Task Force (A)	2016	Colo or FS+FIT								
United States <sup>1</sup>	US Preventive Services Task Force (A)	2016	FIT, gFOBT, or FIT-DNA <sup>1</sup>								
United States <sup>1</sup>	US Preventive Services Task Force (A)	2016	CT, colo or FS								
United States <sup>1</sup>	American Cancer Society (B)	2017	Colo								
United States <sup>1</sup>	American Cancer Society (B)	2017	FIT, gFOBT, or FIT-DNA								
United States <sup>1</sup>	Multi-Society Specialty Group (C)	2017	FIT								
United States <sup>2</sup>	Multi-Society Specialty Group (C)	2017	Colo								
Luxembourg	Ministry of Health (A)	2016	FIT								
Switzerland <sup>2</sup>	League Against Cancer (B)	2013	FIT/gFOBT								
Norway <sup>1</sup>	Cancer Registry of Norway (B)	2012	FIT								
Netherlands	NIPHE (A)	2014	FIT								
Germany <sup>2</sup>	Federal Joint Committee (A)	2017	FIT + Colo								
Sweden	National Board of Health and Welfare (A)	2014	gFOBT								
Ireland <sup>2</sup>	National Screening Service (A)	2012	FIT								
Austria <sup>4</sup>	Austrian Cancer Care (B)	2003	FIT + Colo								
Denmark	National Board of Health (A)	2014	FIT								
Belgium	Foundation Against Cancer (B)	2016	FIT								
Canada <sup>7</sup>	CTFPHC (A)	2016	FIT/gFOBT								
Australia	AGDH (A)	2016	FIT/gFOBT								
France	Institut National Du Cancer (A)	2015	FIT								
Japan	National Cancer Center (A)	2016	FIT								
Iceland <sup>2</sup>	Icelandic Cancer Society (B)	2015	FIT								
UK	UK National Screening Committee (A)	2016	FIT								
Finland	Cancer Society of Finland (B)	2010	gFOBT								
New Zealand	Ministry of Health (A)	2017	FIT								
Italy <sup>2</sup>	National Screening Observatory (A)	2015	FIT								
Spain	CSNHS (A)	2009	FIT								

Recommend:   Recommend selectively:   Do not recommend:   Insufficient evidence:   Every year:   Every 2 years:   Every 5 years:   Every 10 years:  

a) Organisation des dépistages nationaux des cancers colorectaux par pays

Country	Organization (Type)	Year	40-44	45-49	50-54	55-59	60-64	65-69	70-74	75+
United States	US Preventive Services Task Force (A)	2016								
United States	American Cancer Society (B)	2015								
United States <sup>2</sup>	American College of Obstetrics & Gynecology (C)	2017								
United States	American College of Radiology (C)	2016								
Luxembourg	Ministry of Health (A)	NA								
Switzerland <sup>2</sup>	League Against Cancer (B)	2016								
Norway	Cancer Registry of Norway (B)	2010								
Netherlands <sup>3</sup>	NIPHE (A)	2017								
Germany	Federal Joint Committee (A)	2015								
Sweden <sup>4</sup>	National Board of Health and Welfare (A)	2013								
Ireland	National Screening Service (A)	NA								
Austria	Austrian Cancer Aid Society (B)	2014								
Denmark	National Board of Health (A)	2014								
Belgium	Foundation Against Cancer (B)	2017								
Canada <sup>5</sup>	CTFPHC (A)	2011								
Australia	Australian Government Department of Health (A)	2015								
France <sup>6</sup>	National Cancer Institute (A)	2015								
Japan <sup>7</sup>	National Cancer Center (A)	2016								
Iceland	Icelandic Cancer Society (B)	NA								
UK	UK National Screening Committee (A)	2012								
Finland	Cancer Society of Finland (B)	2010								
New Zealand	Ministry of Health (B)	2014								
Italy	National Screening Observatory (A)	2015								
Spain	Cancer Strategy of National Health System (A)	2009								

Recommend:   Recommend selectively:   Do not recommend:   Insufficient evidence:   Every 3 years:   Every 2 years:   Every 1 year:  

b) Organisation des dépistages nationaux de cancers du sein par pays

Country	Organization (Type)	Year	Test	40-44	45-49	50-54	55-59	60-64	65-69	70-74	75+
United States	USPSTF final recommendation (A)	2012	PSA								
United States	USPSTF draft recommendation (A)	2017	PSA								
United States <sup>1</sup>	American Cancer Society (B)	2016	PSA								
United States <sup>2</sup>	American Urological Association (C)	2015	PSA								
Luxembourg <sup>3</sup>	Ministry of Health (A)	2014	PSA								
Switzerland <sup>4</sup>	League Against Cancer (B)	2015	DRE, PSA								
Norway	Cancer Registry of Norway (B)										
Netherlands	NIPHE (A)										
Germany	Federal Joint Committee (A)	2017	DRE								
Sweden	NBHW (A)	2016	PSA								
Ireland	National Screening Service (A)										
Austria <sup>1</sup>	Austrian Cancer Care (B)	2015	DRE, PSA								
Denmark	National Board of Health (A)										
Belgium <sup>5</sup>	Foundation Against Cancer (B)	2017	PSA								
Canada	CTFPHC (A)	2014	PSA								
Australia	AGDH (A)	2017	PSA								
France	Institut National Du Cancer (A)	2016	PSA								
Japan	National Cancer Center (A)	2009	DRE, PSA								
Iceland <sup>7</sup>	Icelandic Cancer Society (B)	2016	PSA								
United Kingdom	UK National Screening Committee (A)	2016	PSA								
Finland	Cancer Society of Finland (B)										
New Zealand	Ministry of Health (A)	2016	PSA								
Italy	National Screening Observatory (A)										
Spain	CSNHS (A)	2009	PSA								

Recommend:   Recommend selectively:   Do not recommend:   Insufficient evidence:   No recommendations available:   Every year:   Every 2 years:   No interval specified:  

c) Organisation des dépistages nationaux des cancers de la prostate par pays

Country	Organization (Type)	Year	Test	10-19	20-29	30-39	40-49	50-59	60-69	70-79
United States <sup>1</sup>	US Preventive Services Task Force (A)	2012	Cyt							
United States <sup>1</sup>	US Preventive Services Task Force (A)	2012	Cyt+HPV							
United States <sup>1</sup>	US Preventive Services Task Force draft (A)	2017	Cyt							
United States <sup>1</sup>	US Preventive Services Task Force draft (A)	2017	HPV							
United States <sup>1</sup>	American Cancer Society (B)	2016	Cyt							
United States <sup>1</sup>	American Cancer Society (B)	2016	Cyt+HPV							
United States <sup>2</sup>	American College of Obstetrics & Gynecology	2016	Cyt							
United States <sup>2</sup>	American College of Obstetrics & Gynecology	2016	Cyt+HPV							
Luxembourg	Ministry of Health (A)	2010	Cyt							
Switzerland <sup>2</sup>	League Against Cancer (B)	2010	Cyt							
Norway <sup>3</sup>	Cancer Registry of Norway (B)	2010	Cyt							
Norway <sup>3</sup>	Cancer Registry of Norway (B)	2010	HPV							
Netherlands <sup>4</sup>	NIPHE (A)	2015	Cyt							
Germany <sup>5</sup>	Federal Joint Committee (A)	2016	Cyt							
Sweden <sup>6</sup>	National Board of Health and Welfare (A)	2014	Cyt							
Sweden <sup>6</sup>	National Board of Health and Welfare (A)	2014	HPV							
Ireland <sup>2</sup>	National Screening Service (A)	2008	Cyt							
Austria <sup>1</sup>	Austrian Cancer Aid Society (B)	NR	Cyt							
Denmark <sup>4</sup>	National Board of Health (A)	2014	Cyt							
Denmark <sup>4</sup>	National Board of Health (A)	2014	HPV							
Belgium <sup>5</sup>	Foundation Against Cancer (B)	2017	Cyt							
Canada	CTFPHC (A)	2013	Cyt							
Australia <sup>11</sup>	Australian Government Department of Health (A)	2017	Cyt							
Australia <sup>11</sup>	Australian Government Department of Health (A)	2017	HPV							
France <sup>12</sup>	National Cancer Institute (B)	2017	Cyt							
Japan <sup>13</sup>	National Cancer Center (A)	2010	Cyt							
Japan <sup>13</sup>	National Cancer Center (A)	2010	HPV							
Japan <sup>13</sup>	National Cancer Center (A)	2010	Cyt+HPV							
Japan <sup>13</sup>	National Cancer Center (A)	2010	HPV with cyt triage							
Iceland <sup>14</sup>	Icelandic Cancer Society (B)	NR	Cyt							
UK <sup>15</sup>	UK National Screening Committee (A)	2016	HPV							
Finland <sup>16</sup>	Cancer Society of Finland (B)	2010	Cyt or HPV							
New Zealand <sup>17</sup>	Ministry of Health (B)	2014	Cyt							
Italy <sup>18</sup>	National Screening Observatory (A)	2016	Cyt							
Spain <sup>19</sup>	Cancer Strategy of National Health System (A)	2009	Cyt							

Recommend:   Recommend selectively:   Do not recommend:   Insufficient evidence:   Every 2 years:   Every 5 years:   Every 3 years:   No interval specified:  

d) Organisation des dépistages nationaux des cancers de la prostate par pays

Ces dépistages, en permettant une détection précoce des tumeurs, à des stades localisés, ont pour conséquence d'augmenter la capacité de traitement des patients entraînant une amélioration de leur pronostic en réduisant le risque de mortalité (12).

Cette organisation de prévention secondaire oncologique à l'échelle nationale fut par conséquent perturbée de manière très importante lors des premiers mois de pandémie du fait de la mise en place de mesures de confinements nationaux adjointes à la suspension des programmes de dépistage demandée par les tutelles (Table B (9)).

Table B. Liste des éventuelles mesures de distanciation sociale nationale et impact sur les programmes nationaux de dépistage de cancers dans les pays à l'étude dans notre travail

Country	Date of First National Lockdown	Cancer Screening Disruptions
Italy	09/03/2020 – 03/05/2020(13)	From March to May 2020(13)
Netherlands	from 15 March until early June 2020(14)	From March, 12, 2020 to mid May 2020(15)
Spain	14/03/2020 - 09/05/2020(16,17)	From 12/03/2020 to mid May 2020(18,19)
Turkey	29/04/2021 – 14/05/2021(20). No national lockdown in 2020.	From March 2020 to June, 1st 2020 (21)
USA	<ul style="list-style-type: none"> <li>• California: 19/03/2020 – 15/06/2021(22)</li> <li>• Connecticut: 23/03/2020 – 22/04/2020(23,24)</li> <li>• Illinois: 21/03/2020 – 30/05/2020(25)</li> <li>• Kansas: 24/03/2020 – 19/04/2020(26)</li> <li>• Massachusetts: 24/03/2020 – 04/05/2020(27)</li> <li>• Michigan: 24/03/2020 – 13/04/2020(28)</li> <li>• New York: 22/03/2020 – 13/06/2020(29)</li> <li>• Oregon: 24/03/2020 – 15/05/2020(30)</li> <li>• Wisconsin: 24/03/2020 – 13/05/2020(31)</li> </ul>	Mid March to Mid July 2020(32)
Taiwan	No national lockdown(33)	No cancer screenings suspension(34)
Switzerland	17/03/2020 – 27/04/2020(35)	From mid March 2020 to 6 weeks later(36)
Germany	22/03/2020 – 20/04/2020(37)	From late March to late April 2020(38)
Portugal	18/03/2020 – 02/05/2020(39)	From mid March to May 2020(39)
China	<p>Main provinces(40):</p> <ul style="list-style-type: none"> <li>• Hubei: 23/01/2020 - 25/03/2020</li> <li>• Zhejiang: 02/02/2020 – 20/02/2020</li> <li>• Xinjiang: 18/07/2020 – 26/08/2020</li> <li>• Hebei: 07/01/2021 – 31/01/2021</li> <li>• Shaanxi: 22/12/2021 – 16/01/2022</li> <li>• Henan: 10/01/2022 – 03/02/2022</li> <li>• Guangdong: 14/03/2022 – 21/03/2022</li> <li>• Shanghai: 01/04/2022 – 01/06/2022</li> </ul>	No screening interruption
France	17/03/2020 – 11/05/2020 (41)	From mid March to 15/06/2020 (42)
Canada	<p>Main provinces:</p> <ul style="list-style-type: none"> <li>• Ontario: 17/03/2020 – 14/05/2020 (43)</li> <li>• British Columbia: 18/03/2020 – 18/05/2020 (44)</li> <li>• Quebec: 18/03/2020 – 05/04/2020 (45)</li> </ul>	23/03/2020 – 26/05/2020 (24)
United Kingdom	23/03/2020 – 10/05/2020 (46)	Between March and April 2020 (47)
South Korea	No national lockdown (48)	No cancer screening suspension (49)
Japan	No national lockdown (50)	From April 7 to May 25 2020 (51)
Brazil	No national lockdown (52,53)	No population-based cancer screening programs in Brazil (53)
Singapore	07/04/2020 – 01/06/2020 (54,55)	07/04/2020 – 01/06/2020 (56)
Poland	13/03/2020-19/04/2020 (57,58)	April-May 2020 (59)
India	25/03/2020-08/06/2020 (60,61)	During 2020 Lockdown (62)

Suite aux deux premières vagues de la pandémie et aux interruptions de soins liées, l'OMS enregistrerait déjà une baisse inquiétante du

nombre de cancers diagnostiqués en Europe. En effet, à la fin de l'année 2020, la Belgique enregistrait une baisse de 44% des nouveaux diagnostics de tumeurs invasives, tandis que l'Espagne voyait une décroissance de 34% du nombre total de cancers diagnostiqués en 2020, par rapport à 2019. Sur la même période, l'Italie décrivait quant à elle une chute de 46% dans le diagnostic des seuls cancers colorectaux (63). Plus largement, à l'échelle mondiale, un travail de méta-analyse montrait qu'à l'issue des deux premières années de pandémie (2020-2021), la réalisation de dépistages systématiques avait diminué de 37% par rapport à 2019, tandis que le nombre total de cancer diagnostiqué avait, lui, diminué de 27% (64).

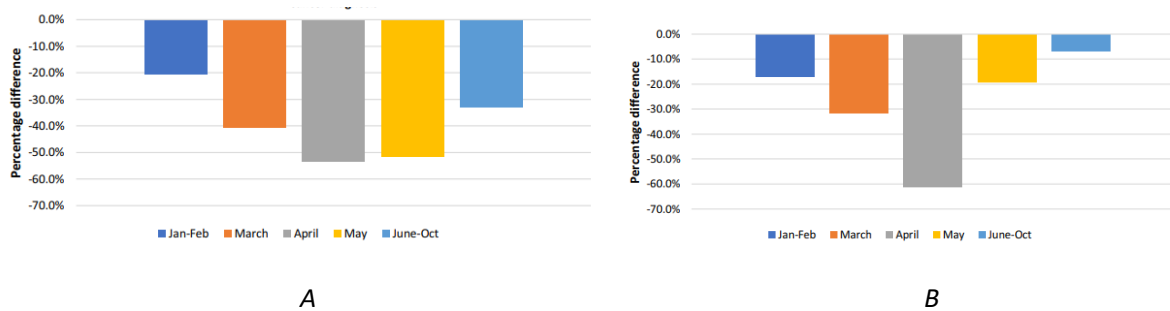


Figure B: Décroissance des tests de dépistages (A) et des diagnostics de cancer solides (B), à l'échelle mondiale, entre 2019 et 2021<sup>(64)</sup>

Cette diminution du nombre de nouveaux cas de cancer lors du début de la pandémie a fait craindre un retard accru de diagnostic des cancers, et donc, un diagnostic réalisé à un stade de dissémination

tumorale plus avancée ainsi qu'une mortalité plus élevée en lien avec ces diagnostics tardifs comme le montrent de nombreuses études de modélisation (65–67). Notre travail avait pour objectif, via la conduite d'une revue systématique de la littérature et d'une méta-analyse, d'évaluer l'impact de la crise COVID 19 sur le stade de dissémination tumorale des cancers solides nouvellement diagnostiqués dans les populations adultes à l'échelle mondiale, par rapport à la situation pré-pandémique.

## II. Résumé et indexation en français

---

### **Impact de la crise COVID 19 sur la présentation clinique initiale des cancers solides nouvellement diagnostiqués : Une revue systématique de la littérature et une méta-analyse.**

#### **Résumé :**

**Contexte :** Les perturbations de soins causées par la crise COVID 19 ont pu impacter la présentation initiale des cancers solides nouvellement diagnostiqués sur cette période ainsi que leur pronostic. Le but de cette revue systématique de la littérature était de comparer la distribution globale des stades des cancers solides avant et après les premières vagues de la pandémie.

**Méthode :** Une revue systématique de la littérature a été réalisée en suivant les recommandations PRISMA et MOOSE, par deux investigateurs indépendants au travers des publications disponibles sur MEDLINE et EMBASE. Une méta-analyse a été conduite afin de comparer le taux de métastases au diagnostic de cancers solides avant et après les premières vagues de la pandémie. Des analyses en sous-groupes ont été menées par type de cancer, et par localisation géographique de l'étude. L'hétérogénéité entre les études et les différences entre sous-groupes ont été vérifiées par des tests  $I^2$  et  $X^2$ .

**Résultats :** Des 2013 articles extraits par l'équation de recherche, 58 ont été inclus dans l'analyse finale, représentant 109 996 patients. Le taux de présentation métastatique au diagnostic était significativement plus important après les premières vagues de la pandémie ( pooled OR: 1.29 (95% CI, 1.06-1.57),  $I^2$ : 89% (95% CI, 86-91)). Les analyses en sous groupes par type de cancer ont révélé significativement plus de métastases au diagnostic pour les cancers du sein et les cancers gynécologiques (OR: 1.51 (95% CI 1.07-2.12) et OR: 1.51 (95% CI 1.04-2.18) respectivement). Les autres types de cancers

ne révélaiet pas de modifications significatives. Les analyses en sous groupes par localisation géographique des études montraient significativement plus de métastases au diagnostic en Italie (OR (95% CI) : 1.55 (1.01-2.39)) et en Espagne (OR (95% CI) : 1.14 (1.02-1.29)). Au contraire, moins de métastases au diagnostic ont été notifiées à Taiwan (OR (95% CI) : 0.51 (0.28-0.93)) et au Canada (OR (95%CI) : 0.14 (0 .07-0.29)). La répartition des stades I-II VS III-IV et I-II VS III ne montrait quand à elle pas de différence notable par pays ou par type de cancer.

**Conclusion :** Malgré une hétérogénéité importante entre les études, notre méta-analyse a démontré un taux plus important de métastases au diagnostic après la pandémie COVID 19. La mise en place de mesures préventives de distanciation et le report des soins peuvent contribuer à expliquer ce résultats.

**Spécialité :**

[Médecine Interne](#)

**Mots clés français :**

[COVID 19](#), [Système de santé](#), [Détection précoce des cancers](#), [Recherche sur les système de soins](#), [Métastases](#), [Stadification des cancers](#).

**Forme ou Genre :**

fMeSH : Dissertation universitaire

Rameau : Thèses et écrits académiques

### III. Résumé et indexation en anglais

---

**Impact of the Sars-Cov-2 outbreak on the initial clinical presentation of new solid cancer diagnoses:  
a systematic review and meta-analysis**

**Abstract:**

**Background:** The COVID-19 pandemic disrupted healthcare systems which might have impaired the initial clinical presentation and the related prognosis of new solid tumor patients. The aim of this systematic review was to determine and compare the initial tumor stage of solid cancer diagnoses before and after the first waves of the Sars Cov-2 outbreak.

**Methods:** Following the PRISMA and MOOSE guidelines, a systematic review on the tumor stage of new solid cancer diagnoses before and after the COVID-19 pandemic was performed by independent reviewers from the published literature in MEDLINE and EMBASE. A random-effects meta-analysis on the rate of metastatic tumors was conducted to compare the rate of metastatic tumors at initial presentation before and after the initial pandemic waves. Subgroup analyses were performed according to the primary tumor site, and to the study country. Interstudy heterogeneity and subgroup differences were assessed with  $I^2$  and  $X^2$  tests, respectively.

**Results:** From 2,013 studies published between January 2020 and April 2022, we included 58 studies with 109,996 patients. The rate of metastatic tumors was higher after the COVID-19 outbreak than before (pooled OR: 1.29 (95% CI, 1.06-1.57),  $I^2$ : 89% (95% CI, 86-91)). For specific cancers, common ORs reached statistical significance for breast (OR: 1.51 (95% CI 1.07-2.12)) and gynecologic (OR: 1.51 (95% CI 1.04-2.18)) cancers, but not for other cancer types. According to countries, common OR (95% CI) reached statistical significance only for Italy: 1.55 (1.01-2.39) and Spain:1.14 (1.02-1.29). Conversely, lower metastatic rates were found in Taiwan (OR (95% CI) : 0.51 (0.28-0.93)) and in Canada (OR (95%CI) : 0.14 (0 .07-0.29)).



Rates were comparable for stage I-II versus III-IV in studies for which that information was available, and for stages I-II versus stage III in studies that did not include metastatic patients.

**Conclusions:** Despite inter-study heterogeneity, our meta-analysis showed a higher rate of metastatic tumors at diagnosis after the pandemic. The burden of social distancing policies might explain those results, as patients may have delayed seeking care.

**English keywords:**

COVID-19, Delivery of Health Care, Early detection of cancer, Health Services Research, Neoplasm Staging, Neoplasm Metastasis.

**Publication type:**

MeSH : Academic Dissertation

## IV. Liste des abréviations

---

- Sars-Cov 2: Severe Acute Respiratory Syndrome Corona Virus 2
- COVID 19: Coronavirus Disease 2019
- WHO: World Health Organisation
- OMS: Organisation Mondiale de la Santé
- OR : Odd Ratio
- CI : Confidence Interval
- IC : Intervalle de confiance
- VS : Versus
- PRISMA : Preferred Reporting Items for Systematic Review and Meta-Analyses
- MOOSE: Meta-Analysis of Observational Studies in Epidemiology
- MeSH: Medical Subject Headings
- NIH: National Institute of Health
- E.G.: Exempli gratia
- M+: Metastatic
- M-: Non metastatic
- N+: Node invasion
- N0: No node invasion
- B: Breast cancer
- C: Colorectal cancer
- M: Melanoma
- G: Gynecologic cancer
- P: Prostate cancer
- L: Lungs cancer
- Ga: Other gastrointestinal cancers
- G-U: Genito-Urinary cancers
- O: Other types of cancers
- NA: Not Applicable
- UK: United Kingdom

- USA: United States of America
- PMID: PubMed Identifier.
- SRAS Cov: Syndrome respiratoire Aigu Sévère lié au Coronavirus

## Background

---

In 2020, the COVID-19 pandemic disrupted healthcare systems worldwide, as a result both of the pandemic itself and the strain it imposed on services, and of the range of social distancing policies that were implemented and may have affected care-seeking behaviors. In cancer care, screening programs were suspended in many countries, and care strategies were sometimes adapted to avoid exposing patients to COVID-19 infection, and to reduce the burden on intensive care units. Patients may also have avoided consulting for fear of being contaminated. As a result, meta-analyses suggest that screening decreased by 40 to 50% , and that overall, cancer diagnoses fell by 27% in January-October 2020 compared to the pre-COVID-19 period(68,69).

Although recovery plans have been implemented in many countries, it is possible that patients with new cancers whose initial care was delayed could present more advanced tumors, with poorer prognosis. Indeed, modeling studies have anticipated thousands of additional cancer-related deaths in the coming years due to delays in diagnosis and treatment, resulting in tens of thousands of total years of life lost compared with pre-pandemic setting(70).

The aim of this systematic review of the literature with meta-analysis was to compare the proportion of metastatic presentations, and the distribution of initial tumor stage at diagnosis, before and after the COVID-19 outbreak, for patients with solid cancers

## 1 : Material and method

---

This systematic review was reported in accordance with the Preferred Reporting Items for Systematic Review and Meta-Analyses (PRISMA 2020) and the Meta-Analysis of Observational Studies in Epidemiology (MOOSE) guidelines.(71),(72)

### 1.1 *Data sources, literature searches and eligibility criteria*

We searched PubMed and Embase databases for English-language original articles published between January 2020 and April 2022 that included information on the impact of the COVID-19 pandemic on solid malignant tumor stage, using Medical Subject Headings (MeSH) terms and free words. The complete search equation is available in Supplementary materials, Appendix S1. We screened the list of retrieved articles by evaluating titles first, then abstracts, and finally full texts. At each step, two independent investigators evaluated each article. A third independent investigator settled disagreements. We included articles in English that compared cancer stages at diagnosis before versus after the Covid-19 outbreak, using any relevant cancer staging guideline. We excluded reviews, editorials, posters, letters, and guidelines. Full inclusion and exclusion criteria are available in Appendix S2.

### 1.2 *Data collection and risk of bias assessment*

For each article, two independent investigators collected items of interest which are summarized in Appendix S3. In the event of a discrepancy, a third independent investigator

settled the issue. We did not contact any study author. We classified primary tumor types as displayed in Appendix S4. We assessed the risk of bias of the included studies with the NIH Quality Assessment Tool for Observational Cohort and Cross-sectional Studies.(73)

### 1.3 *Data analysis*

We used the rate of metastatic tumors for comparing cancer presentation before and after the initial COVID-19 pandemic waves. We calculated odds ratio (OR) and 95% confidence intervals (CI) for each study, and we then pooled these individual ORs using a random-effects meta-analysis. Subgroup analyses were performed according to the primary tumor site (when this information was available), and to the study country.

We conducted meta-analysis across all studies and at the subgroup level using the Mantel-Haenszel method. Because we expected heterogeneity between studies, we used the Hartung-Knapp method to calculate CIs on the main effect estimate, with a variance correction.(74,75) We computed prediction intervals for exposure effect based on Hartung and Knapp's method.(76) Results were graphically represented in forest plots. The extent of interstudy heterogeneity and subgroup differences were assessed with the Cochran  $I^2$  statistics and  $X^2$  tests, respectively. Between-study variance  $\tau^2$  was assessed using the Sidik and Jonkman's approach and the Q-Profile method for  $\tau^2$ 's CI.(77,78) We applied a continuity correction of 0.5 in studies with zero events in one arm.

When articles mentioned missing data or unknown status for some patients, we ignored those patients. When studies overlapped, we only included the study with the broadest inclusion criteria.(79) In situ tumors were excluded from the analysis.

For analyses where more than ten studies could be included, we plotted funnel plots and conducted Thompson and Sharp's arcsine test to assess the presence of small study effects.(80,81)

Using the same methods, we performed meta-analysis on the rate of stage I-II versus III-IV for the studies where this information was available. When studies mentioned 'advanced stages' with no more detailed information, we counted the 'advanced' patients as stage IV when a separate 'locally advanced' category was also available. These data were then included in the first analysis of metastatic vs non-metastatic status. If no separate 'locally advanced' category was available alongside 'advanced', we could not know if these 'advanced' patients were stage III or IV, and these data were included in the 'stage I-II vs III-IV' analysis.

Finally, for studies that did not include metastatic patients (e.g., studies that focused on patients undergoing surgery), we performed a separate meta-analysis comparing stage I-II versus stage III.

All analyses were conducted using R v.2.2.2 (The R project for statistical computing, [www.r-project.org](http://www.r-project.org)) and the *meta* package (v6.2.1.).(82) No ethics committee approval and no patient consent were necessary because the study was restricted to publicly available data.

## 2 : Results

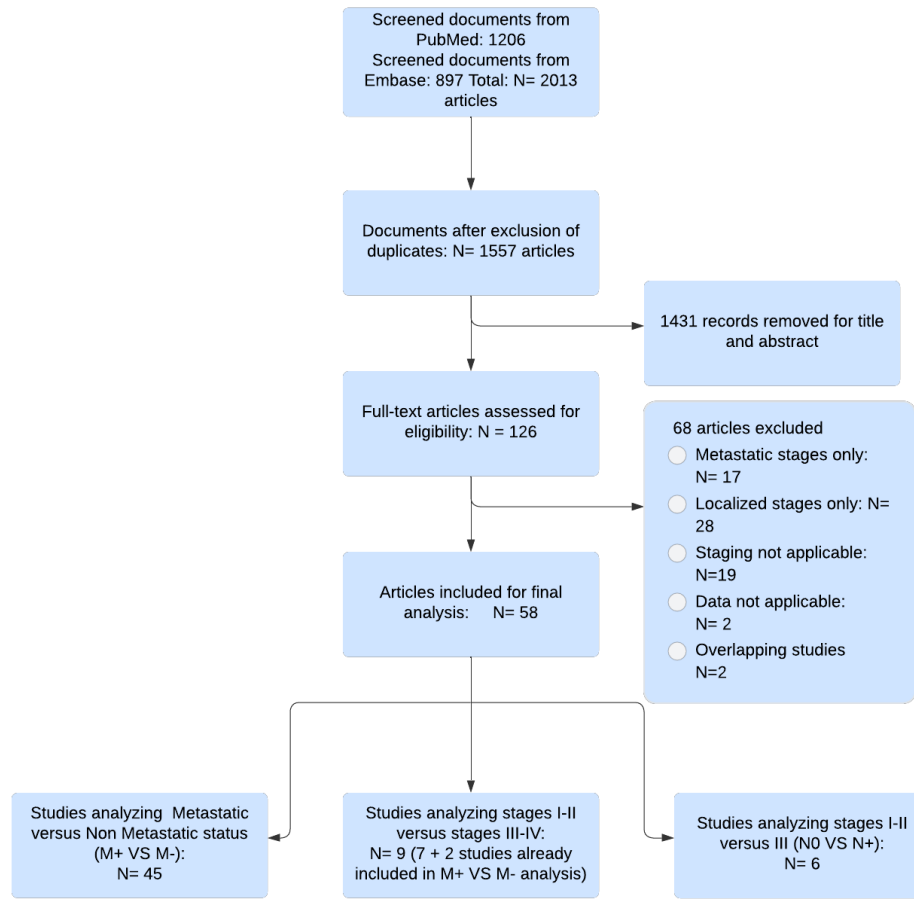
---

### 2.1 *Study characteristics*

We identified 2,013 studies published between January 2020 and April 2022, and included 58 studies in our meta-analysis (Figure 1, Supplementary Table S1). These articles covered Europe, Asia, North and South America (Supplementary Figure S1). The quality assessment of included studies is presented in Supplementary Table S2. For each study location, lockdowns and cancer screening postponement were summarized in Supplementary Table S3. Breast cancer was the most represented cancer type.

Forty-five studies (98,307 patients) compared metastatic stages IV versus non-metastatic stages I-II-III; Nine studies (7316 patients) compared stages I-II versus III-IV (some articles contributed to both the first and the second analyses) and six (4,373 patients) compared stages I-II versus III without including metastatic patients. The number of patients included per study ranged from 44 to 54, 828 (Supplementary Table S1) .





**Figure 1: Study selection flowchart.**

Two instances of overlapping studies were identified. In the case of two Dutch register-based studies, we kept the study that included all patients over the one that focused on screening and included only patients aged 50-74.(83,84) In the case of two Italian studies, one monocentric and one multicentric that included the previous center, we kept the multicentric study.(85,86)

## 2.2 *Metastatic versus non-metastatic:*

In the 45 studies that contained information on metastatic stage shift, the OR (95% CI) on metastatic stage after vs before the COVID-19 outbreak reached 1.29 (1.06-1.57), indicating a higher probability of patients being metastatic after the outbreak (Figure 2). Heterogeneity between studies was high, with a  $I^2$  of 89% (95% CI, 86-91) and ORs varying from 0.14 to 12.07. Funnel plot showed uneven distribution of small studies (Figure 3), but the arcsine test was not significant ( $p = 0.25$ ).

In subgroup analysis per country, results reached statistical significance for Italy (seven studies) and Spain (one study), with ORs of 1.55 (1.01-2.39) and 1.14 (1.02-1.29) respectively (Figure 3). In other countries with more than one study, ORs were 1.65 (0.37-7.32) for Turkey, 1.14 (0.46-2.84) for the Netherlands, 1.88 (0.78-4.53) for the US, 1.48 (0.00-1135,67) for France, 0.96 (0.26-3.53) for Germany, 1.36 (0.26-7.20) for Portugal, 0.91 (0.15-5.57) for China, 1.77 (0.76-4.10) for the United Kingdom, and 1.24 (0.75-2.04) for South Korea.

Conversely, lower metastatic presentations were found in Taiwan (OR (95% CI) : 0.51 (0.28-0.93)) and in Canada (OR (95%CI) : 0.14 (0.07-0.29)).

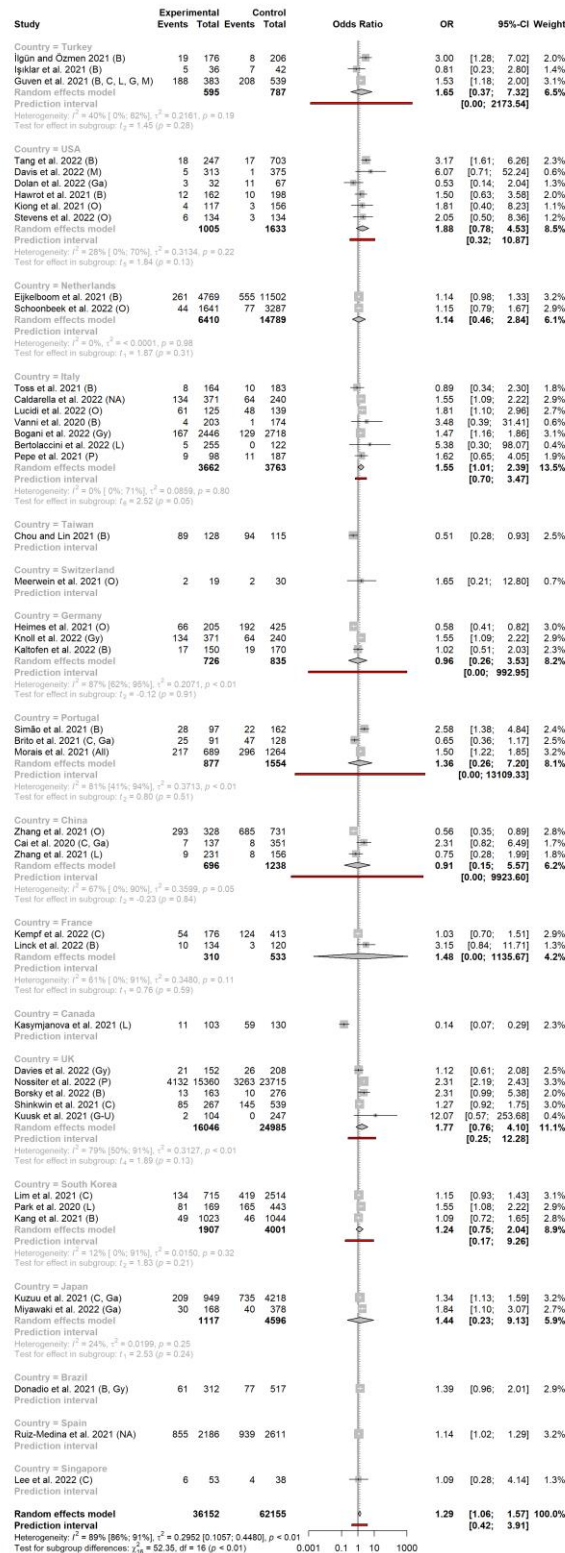
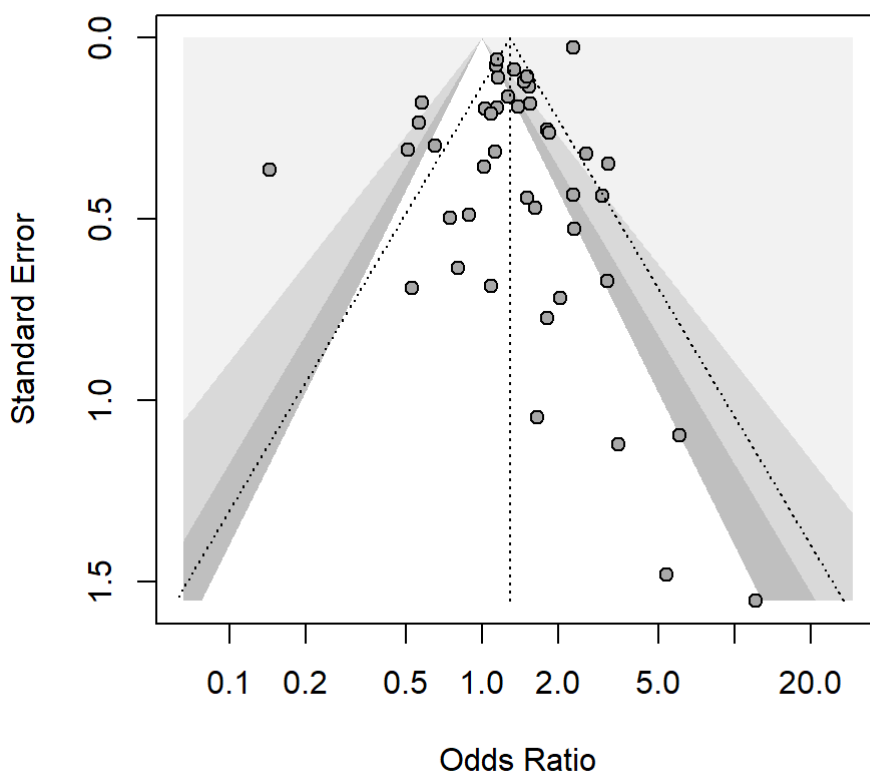


Figure 2: Metastatic tumor rates before and after the Sars Cov2 outbreak, according to study country.



**Figure 3: Funnel plot for assessment of study bias.**

In subgroup analysis per location, the related OR reached statistical significance for breast and gynecologic cancers: 1.51 (1.07-2.12) and 1.51 (1.04-2.18) respectively (Figure 4). OR for other cancer types did not reach statistical significance: 0.79 (0.18-3.52) for lung cancer, 1.15 (0.89-1.49) for colorectal cancer, 1.45 (0.62-3.42) for other types of digestive cancers, 2.26 (0.51-10.05) for prostate cancer, 12.07 (0.57-253.68) for genito-urinary cancer (one study only), 2.49 (0.00-84469.69) for melanomas, and 1.01 (0.59-1.75) for other types of cancers ( $X^2 = 24.60$ ,  $p < 0.01$ ) (Figure 4a). The funnel plot for breast cancer (the only cancer type with more than ten studies) is available in Supplementary material (Figure S2). Arcsine test was non-significant ( $p = 0.76$ ).

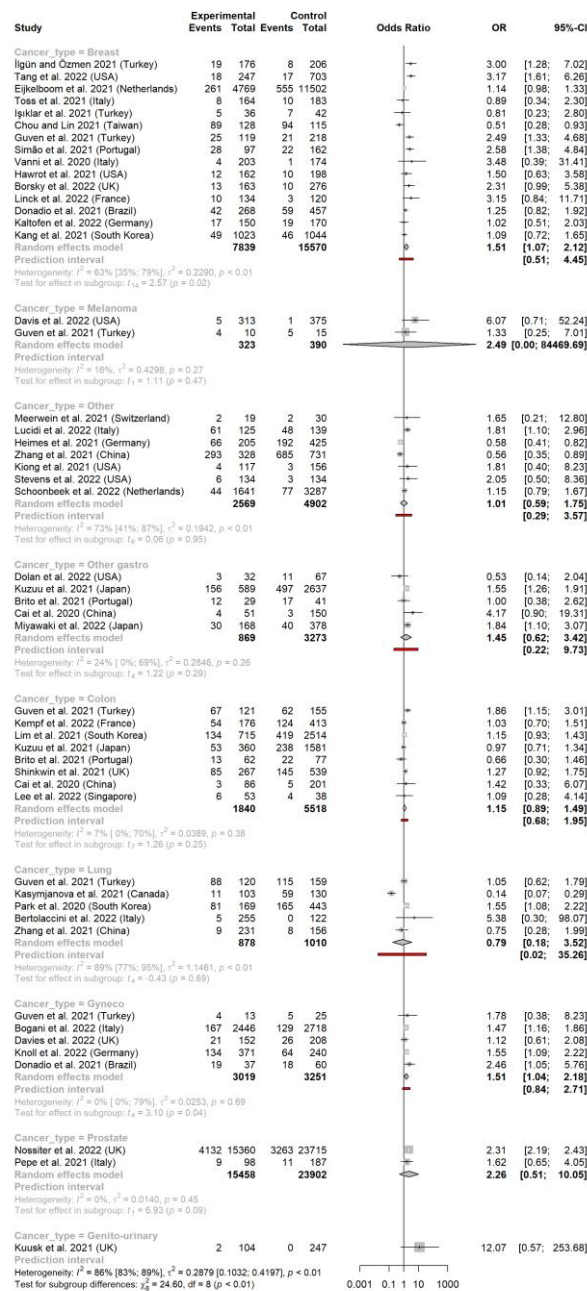


Figure 4: Metastatic tumor rates before and after the pandemic, according to cancer type.

### 2.3 Localized versus advanced cancer (Stages I-II vs III-IV)

In the analysis of localized versus advanced cancer stages (i.e., stages I-II vs III-IV), the pooled OR was 1.48 (0.84-2.62) (Figure 5). None of the subgroup analyses per location or per country reached statistical significance (Figures 5 and 6), except for the only Spanish study included in the stage I-II vs III-IV analysis (OR (95%): 1.17 (1.03; 1.31)). Heterogeneity was high, with  $I^2$  51% (0-77) and ORs varying between 0.13 and 10.67

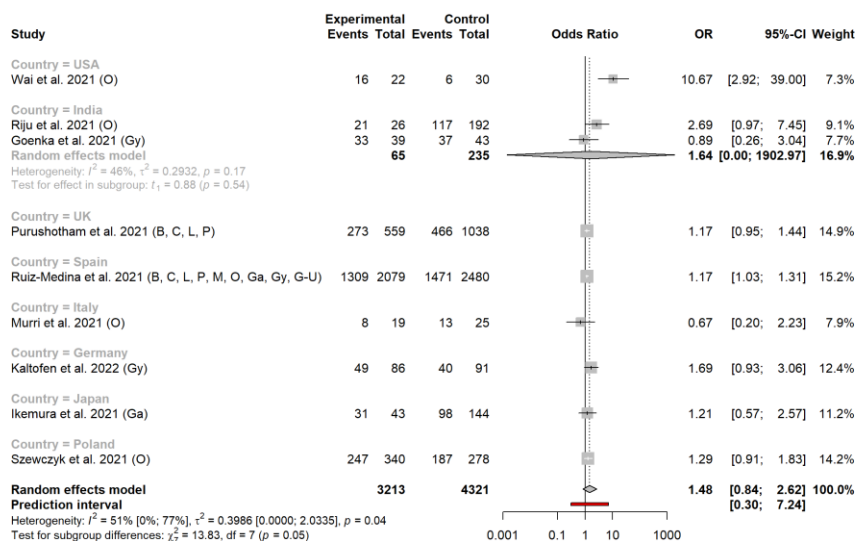


Figure 5: Rates of stage I-II versus III-IV before and after the pandemic according to study country.

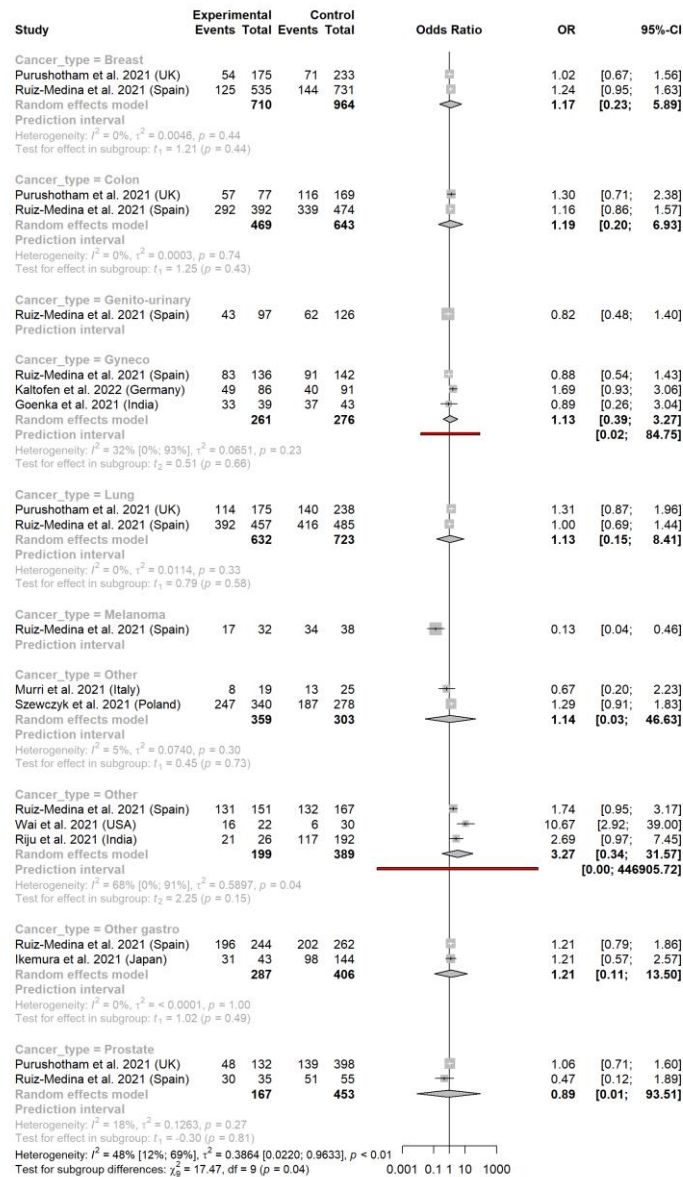
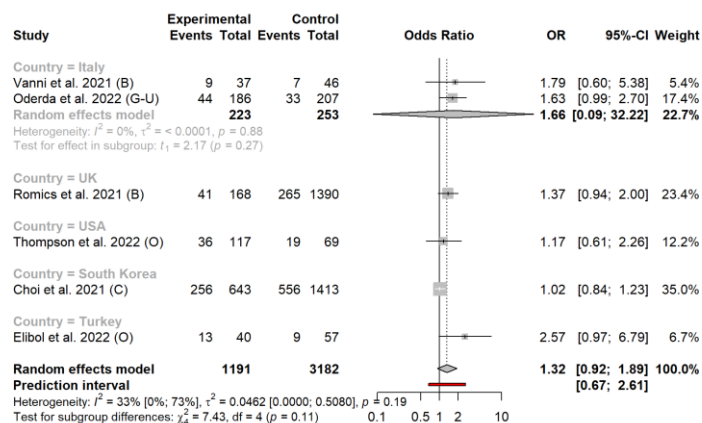


Figure 6: Rates of stage I-II versus III-IV before and after the pandemic according to cancer type.

**2.4 Studies with no metastatic patients (Stages I-II vs III)**

In the analysis of Stages I-II vs III, in studies that did not include metastatic patients, the pooled OR was 1.32 (0.92-1.89) (Figures 7 and 8).



**Figure 7: Rates of stage I-II versus III before and after the pandemic according to study country.**



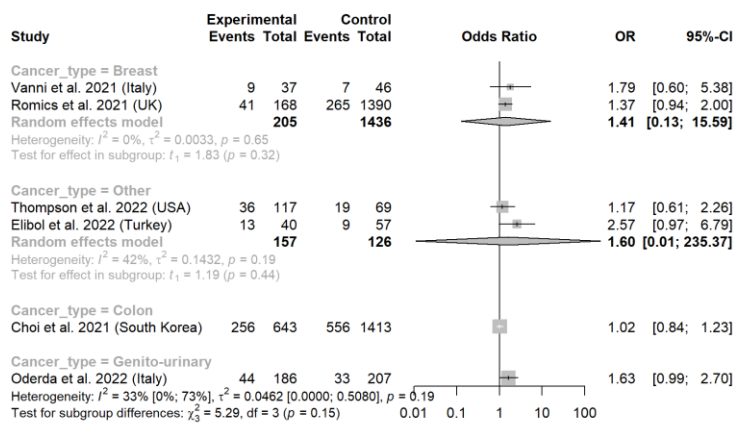


Figure 8: Rates of stage I-II versus III before and after the pandemic, according to cancer type.

### 3 : Discussion

---

We have reviewed published evidence on the impact of the Covid19 outbreak on cancer stages at diagnosis. The results of the main analysis (45 studies) showed an increased rate of metastatic stages at initial clinical presentation, for new solid cancer cases, after compared to before the COVID-19 outbreak. Subgroup analyses yielded significant results for breast and gynecologic cancers, and for Italy and Spain. Secondary analyses on Stages I-II vs III-IV (nine studies) and Stages I-II vs III (for the six studies that excluded metastatic patients) yielded non-significant results.

Based on these results, one may conclude that the pandemic has been associated with more severe forms of cancer at diagnoses. However, we noticed large variations between countries, as well as between tumor locations.

This heterogeneity is still present in more recent observational studies. In the US, Berrian *et al.* found a 21.4% increase in *de novo* metastatic disease in colorectal, lung, prostate, and breast cancers.(87) In Brazil, Resende *et al.* showed that stage IV breast cancer diagnoses were more frequent post-COVID than pre-COVID period (2018-2019). Indeed, advanced stages represented 16,9% of patients during COVID 19 pandemic versus 12,7% in the pre-pandemic period.(88)

Yet, other studies did not encounter significant differences in cancer stages. For example, studies found significant stage shifts for melanomas in the US and Greece, for lung cancer in the UK and for genito-urinary cancers in Iran.(89–93) For colorectal cancer, stage shifts were absent in Canada and the US but noticeable in Italy and South Korea.(94–97) In a systematic review, Pararas *et al.* analyzed stage shifting for colorectal cancer. They noted a significant

increase in the number of patients presenting with *de novo* metastatic neoplasms during the pandemic (OR 1.65, 95% CI 1.02–2.67).(98) We found a positive but non-significant association between the Covid19 pandemic and *de novo* metastatic colorectal cancer, but our analysis included less patients for this location, which may explain the difference in findings.

In our study, Italy and Spain were associated with significant increase of *de novo* metastatic tumor stages. In the case of Italy, such an increase might be due to the number of studies included (seven studies including 7,423 patients, versus five for the UK, six for the US and one to three for other countries). National screening programs for breast, colorectal and cervix cancers were stopped from March 2020 and resumed in May 2020, with differences between regions(99). Overall, the number of screening invitations sent was 15 to 20% smaller in 2020 than in 2019.(99) These disruptions could partly explain the excess of metastatic cases observed in Italy.(100,101) We also observed a significant increase in metastatic stages in Spain. However, we included only one Spanish study, limited to Malaga's region. Spanish national screening programs for breast and colorectal cancer were paused during the pandemic, which could have contributed to this outcome. More recent Spanish studies have obtained contrasting results.(19,102)

We found a significantly lower presence of metastatic stages at diagnosis after the COVID-19 outbreak in Taiwan and Canada. We included only one small study from each of these countries. In Taiwan, there was no national lockdown or interruption to screening programs. Indeed, Taiwan could draw on its experience of the 2003 SARS pandemic, and applied early policies of travel regulation, testing, and prevention, avoiding lockdowns and screening postponements.(103),(104) For Canada, we included a single study about lung cancer in

Quebec. In the same province, Ramanakumar *et al* did not find any significant difference in Stage IV for lung cancer before and after the pandemic.(105)

We found significantly more metastatic stages at diagnosis after the Covid-10 outbreak for breast and gynecological cancers. In both cases, we included multiple large studies (15 studies with 23,409 patients for breast cancer, 5 studies with 6,270 patients for gynecological cancers). In both cases, interruptions of screening programs may have contributed to the result.

From a general point of view, our results suggest that cancer care disruptions such as national lockdowns and national screening programs postponement led to more severe cancer cases with more metastasis at diagnosis. Unfortunately, these findings only give weight to the dark projections obtained in modelling studies, which anticipate an increase in cancer-related deaths (106–108) Lockdowns and interruptions to screening programs were probably only one factor contributing to the decrease in diagnoses. Patients feared Covid-19 infection, sometimes more than cancer (45), which can explain the prolonged impact on care seeking behaviors(109–111)

We conducted a systematic review of the academic literature, with dual, blinded study selection and data extraction. We covered all cancer types and regions. We also analyzed studies per cancer type and per country, to account for the possibility of different impacts of the pandemic. We included a large number of studies, covering 109,996 patients over 19 countries. However, some limitations must be taken into consideration when considering our findings.

Many studies in our review were small and monocenter. Researchers in areas most affected by the pandemic may have been more prone to report observational data, generating a publication bias (although this was not detected in our analyses). Monocentric studies also cannot account for potential reconfigurations in care trajectories, with some hospitals attracting more cancer patients during the pandemic while others focused on Covid-19 care. Only a minority of studies were population-based, which is the only way to mitigate these issues. When analyzing studies by country, we could not account for variations between regions, including the level of restrictions imposed (e.g., between American states).

We also noticed methodological differences. The way pre- and post-Covid time periods were defined varied between studies. Some studies focused on a short period at the apex of the pandemic, when screening programs stopped, and their area was under lockdown. It is likely that only the most serious patients presented to hospital at these times, increasing the rate of advanced tumors while the absolute number of patients decreased. Other studies defined the COVID-19 period more broadly. Data sources were also heterogeneous in our sample. A few studies were based on registries, which normally guarantee good data completeness and reliability. Other studies mixed data sources, used EHRs or claims data. This may have affected both completeness and quality of the data.

Finally, we only included English sources, and focused on full articles. Data may also have been shared in other languages, and studies presented as conference abstracts may not have been published as full articles.

Despite these limitations, our results suggest that national cancer screening programs should be maintained in high-risk populations even during infectious outbreak waves. After the disruptions, platforms of rapid cancer diagnosis might compensate the interruptions of

screening programs and clear diagnosis backlogs. The issue of how cancer care recovers from the pandemic would require population-based studies. Such studies are likely to be available only once registries have been updated, which may take some time.(112). These studies should also look at the evolution of patient survival, given the dark picture painted by modeling studies. Finally, the data we analyzed comes overwhelmingly from high-income countries. Analyzing outcomes in low- and middle-income countries is important to understand how their healthcare systems have worked to mitigate the pandemic impact.

## 4 : Conclusion

---

The COVID-19 outbreak has affected cancer management around the world. This meta-analysis of 58 articles from 19 countries showed an increased rate of metastatic stages at initial clinical presentation for new solid cancer cases diagnosed after the COVID-19 outbreak, with variations between cancer types and between countries. Future studies on the long-term consequences of the pandemic should also assess the impact on patient survival.

## V. Conclusion Générale

Cette étude est, à notre connaissance, la première revue systématique de littérature et méta-analyse s'intéressant aux différences de présentation diagnostique pour les cancers solides à l'échelle mondiale, avant et après les premières vagues de cette pandémie. Les principaux résultats retrouvaient une augmentation significative de 29% (OR = 1,29 (Intervalle de Confiance (IC) 95% 1,06-1,57)) des présentations métastatiques au diagnostic pour les cancers solides dans les populations adultes après les premières vagues de COVID 19 par rapport aux périodes antérieures, et avec des disparités importantes selon les pays ou le type de cancer à l'étude. Ainsi, les résultats retrouvaient une augmentation de 51% des tumeurs solides métastatiques au diagnostic pour les cancers du sein (OR= 1,51 (IC95% 1,07-2,12)) et les cancers gynécologiques (OR=1,51 (IC95% 1,04-2,18)), par rapport aux périodes antérieure, tandis que les autres types de cancers étudiés n'étaient pas concernés de façon significative. Concernant les localisations géographiques, l'Italie et l'Espagne voyaient leur nombre de cancers métastatiques augmenter de 55% (OR = 1,55 (IC95% 1,01-2,39)) et 14% (OR = 1,14 IC95% (1,02-1,29)) respectivement, par rapport à 2019.



Ces résultats s'expriment en grande partie comme des conséquences très probables des modifications de soins et des mesures de distanciation sociale survenues pendant la COVID 19, à l'image des confinements nationaux et des arrêts des dépistages de masse. Au contraire, un nombre moins important de cas métastatique au diagnostic était notifié à Taïwan et au Canada avec une baisse de 49% (OR = 0,51 (IC95% 0,28-0,93)) et 86% (OR = 0,14 (IC95% 0,07-0,29)) en 2020 par rapport à 2019, respectivement. Une telle baisse des présentations métastatiques peut s'expliquer, dans le cas de Taïwan, par une mise en place rapide des mesures de régulation des flux de transports internationaux, de tests de masse et de prévention de la transmission du virus s'appuyant sur l'expérience de l'épidémie de Sars cov survenue en 2003 dans le pays (113). Les résultats canadiens sont, quant à eux, plus difficilement interprétables, compte tenu du peu de patients inclus (n = 233) et du caractère monocentrique de l'article étudié.

Bien que la majoration relative du nombre de présentations métastatiques semble intimement liée aux suspensions des dépistages nationaux et aux confinements survenus au pic de la pandémie, certaines études montrent que de nombreux patients ont continué à éviter les hôpitaux après la reprise normale des soins (114). La peur de l'infection était le principal facteur évoqué, intriqué de manière étroite

aux répercussions que celle-ci pourrait avoir si une pathologie chronique telle qu'un cancer solide à un stade avancé venait à être découverte : peur d'une plus faible immunité face au virus, peur d'un report de l'instauration d'un traitement du fait de l'infection ... (114,115). Ce retard au diagnostic médié par la peur du virus et la poursuite de l'isolement malgré la fin des mesures restrictives pourrait amplifier l'impact de la pandémie elle-même sur la gravité des cancers solides nouvellement découverts, et leur évolution prévisible. En effet, des études de modélisation prévoient une surmortalité significative concernant les néoplasies solides, à l'horizon 2030. En Angleterre, l'équipe de Duffy prédit une surmortalité d'environ 700 cas par an concernant le seul cancer du sein, en lien direct avec le retard diagnostic occasionné par la poursuite de l'isolement malgré la fin du confinement national survenu entre mars et mai 2020 (106). Aux Etats-Unis, l'équipe d'Alagoz prévoit, quant à elle, un excès global de mortalité de 2 487 cas pour le cancer du sein, tandis que Sharpless compte jusqu'à 10 000 morts supplémentaires pour les cancers du sein et colorectaux cumulés (65,116). Selon les études, l'excès de mortalité mesuré en 2030 au Royaume Uni et aux Etats Unis, variera entre 1 et 10%, sans différence notable selon l'ethnie du patient (65–67).

Cette surmortalité n'étant pas négligeable, il convient d'instaurer des stratégies afin de diminuer le retard diagnostique si une situation

similaire à la pandémie COVID-19 venait à se reproduire. Les résultats de notre étude plaideraient, dans la mesure du possible, pour une continuité des dépistages en temps de pandémie. Si cela s'avérait toutefois impossible, une des solutions évoquées par de nombreuses études serait une meilleure utilisation de la télémédecine à des fins de dépistage contre les cancers (117). Par exemple, aux Etats-Unis, l'équipe de Gorin suggère d'améliorer les recours aux téléconsultations incitant les patients à effectuer plus de dépistages à la maison pour les cancers colorectaux et les cancers du col de l'utérus (114). L'équipe de Parker a, quant à elle, démontré que les femmes concernées par le dépistage des cancers du col de l'utérus ont préféré, durant la pandémie COVID-19, effectuer ce dépistage à domicile du fait de la peur de contracter l'infection (41,3%), de la difficulté d'obtenir un rendez-vous en temps de crise sanitaire (21,7%), et d'avoir plus de temps pour s'occuper de leur santé en temps de confinement (12%) (115). Les populations les plus âgées pourraient, quant à elles, bénéficier d'une éducation à la télémédecine, ce recours étant essentiellement utilisé par les populations les plus jeunes (118). Enfin, une utilisation facilitée de l'intelligence artificielle médicale semble pouvoir être une solution afin de rattraper un retard diagnostic occasionné par les perturbations de soins survenues en temps de pandémie, en permettant une détection rapide des lésions

cancéreuses ainsi qu'un triage plus efficace des patients pour les suites de prises en charge (119,120).

La crise COVID 19 et les perturbations de soins qui en résultent pourraient être riches d'enseignements dans un monde où les conflits armés sont de plus en plus nombreux et globaux, entraînant bien souvent d'importantes ruptures de suivis chez les patients atteints de pathologies chroniques, et notamment de cancers (121). Par exemple, fin 2020, en pleine crise COVID 19, 82 millions de personnes se sont vues contraintes de quitter leur pays du fait de contexte de guerre (122). En Ukraine, depuis février 2022 et l'annexion par la Russie, plus de 3 millions de personnes ont fui le pays. Les patients atteints de cancer résidant toujours sur le territoire ukrainien font face à un retard de prise en charge majeur et inévitable, du fait des dommages causés aux infrastructures de soins, de la réquisition des services pour la prise en charge des blessés de guerre, de la peur de sortir des habitations en lieu découvert, du manque de moyen de transport ... Ainsi, l'équipe de Calgevic, estime qu'un retard de 4 mois dans la prise en charge des cancers en Ukraine en ce temps de guerre mènera à un surplus annuel de 676 morts pour le cancer de la vessie, 663 pour le cancer du côlon, 1 118 pour le cancer du sein, 306 pour les cancers du nasopharynx, et 848 pour le cancer du col de l'utérus dans les prochaines années (123). De même, l'émergence d'un conflit armé

entre Israël et la Palestine laisse présager de conséquences néfastes liées au retard de prise en charge des pathologies chroniques et notamment des cancers, dont le bilan des pertes viendra s'ajouter à celui des disparus civils et militaires. Limiter les décès « indirects » en temps de guerre apparait donc comme un enjeu essentiel au cours des prochains mois et années, et en ce sens, l'expérience acquise lors des crises sanitaires mondiales doit se rendre au service de la communauté internationale et des états en détresse.

## Bibliographie

---

1. WHO. Allocution liminaire du Directeur général de l’OMS lors du point presse sur la COVID-19 - 11 mars 2020. 2020 Mar 11;
2. Unwin RJ. &#x201c;The 1918 Influenza Pandemic: Back to the Future?&#x201d; Kidney Blood Press Res. 2021;46(5):639–46.
3. Oran DP, Topol EJ. The Proportion of SARS-CoV-2 Infections That Are Asymptomatic. Ann Intern Med. 2021 May;174(5):655–62.
4. University of Oxford. In patients of COVID-19, what are the symptoms and clinical features of mild and moderate cases? The Center for Evidence-Based Medicine. 2020 Apr 1;
5. Elrobaa IH, New KJ. COVID-19: Pulmonary and Extra Pulmonary Manifestations. Front Public Health. 2021 Sep 28;9.
6. Alasdair Sandford. Coronavirus: Half of humanity now on lockdown as 90 countries call for confinement. Euronews, AFP. 2020 Apr 2;
7. Buisson Y. Covid-19, an unfinished story. Presse Med. 2022 Sep;51(3):104131.
8. WHO. WHO Coronavirus (COVID-19) Dashboard | WHO Coronavirus (COVID-19) Dashboard With Vaccination Data. 2023 Oct;
9. Boniface D, Tapia-Rico G. Oncology During the COVID-19 Pandemic: a Lockdown Perspective. Curr Oncol Rep. 2022 Oct 27;24(10):1219–35.
10. WHO. Cancers - WHO. 2022 Feb 3;
11. Ebell MH, Thai TN, Royalty KJ. Cancer screening recommendations: an international comparison of high income countries. Public Health Rev. 2018 Dec 2;39(1):7.
12. Coleman C. Early Detection and Screening for Breast Cancer. Semin Oncol Nurs. 2017 May;33(2):141–55.
13. Battisti F, Falini P, Gorini G, Sassoli de Bianchi P, Armaroli P, Giubilato P, et al. Cancer screening programmes in Italy during the COVID-19 pandemic:

- an update of a nationwide survey on activity volumes and delayed diagnoses. *Ann Ist Super Sanita*. 2022;58(1):16–24.
14. Yerkes MA, André SCH, Besamusca JW, Kruijven PM, Remery CLHS, van der Zwan R, et al. “Intelligent” lockdown, intelligent effects? Results from a survey on gender (in)equality in paid work, the division of childcare and household work, and quality of life among parents in the Netherlands during the Covid-19 lockdown. *PLoS One*. 2020;15(11):e0242249.
  15. Dinmohamed AG, Cellamare M, Visser O, de Munck L, Elferink MAG, Westenend PJ, et al. The impact of the temporary suspension of national cancer screening programmes due to the COVID-19 epidemic on the diagnosis of breast and colorectal cancer in the Netherlands. *J Hematol Oncol*. 2020 Nov 4;13(1):147.
  16. <https://www.theguardian.com/world/2020/mar/14/spain-government-set-to-order-nationwide-coronavirus-lockdown>. *The Guardian*. 2020 Mar 14;
  17. <https://www.bloomberg.com/news/articles/2020-04-22/spain-extends-lockdown-as-virus-cases-rise-again-in-europe#xj4y7vzkg>. *Bloomberg*. 2020 Apr 22;
  18. Vives N, Binefa G, Vidal C, Milà N, Muñoz R, Guardiola V, et al. Short-term impact of the COVID-19 pandemic on a population-based screening program for colorectal cancer in Catalonia (Spain). *Prev Med (Baltim)*. 2022 Feb 1;155.
  19. Bosch G, Posso M, Louro J, Roman M, Porta M, Castells X, et al. Impact of the COVID-19 pandemic on breast cancer screening indicators in a Spanish population-based program: a cohort study. 2022;11:77434.
  20. Genç K. COVID-19 in Turkey: a nation on edge. Vol. 397, *Lancet (London, England)*. NLM (Medline); 2021. p. 1794–6.
  21. Yılmaz E, GÜldoğan N, Arıbal E. The effect of covid-19 pandemic on breast imaging: A clinical observations. Vol. 26, *Diagnostic and Interventional Radiology*. Turkish Society of Radiology; 2020. p. 603.

22. <https://www.nytimes.com/2021/04/07/us/california-lockdowns.html>. New York Times. 2021 Apr 7;
23. <https://www.nbcconnecticut.com/news/coronavirus/coronavirus-outbreak-latest-updates/2242154/>. NBC Connecticut. 2020 Mar 20;
24. Wikipedia [Internet]. 2023. [https://en.wikipedia.org/wiki/COVID-19\\_lockdowns](https://en.wikipedia.org/wiki/COVID-19_lockdowns).
25. <https://www.nbcchicago.com/news/coronavirus/pritzker-expected-to-extend-illinois-stay-at-home-order-thursday-sources/2260588/>. NBC Chicago. 2020 Apr 23;
26. <https://eu.usatoday.com/story/news/nation/2020/03/21/coronavirus-lockdown-orders-shelter-place-stay-home-state-list/2891193001/>. USA Today News. 2020 Mar 21;
27. <https://www.newsweek.com/which-state-lockdowns-us-have-been-extended-1497162>. Newsweek. 2020 Apr 9;
28. <https://www.clickondetroit.com/news/local/2020/03/23/watch-live-michigan-gov-whitmer-to-provide-update-on-states-covid-19-response-efforts/>. Click on Detroit. 2020 Mar 23;
29. <https://www.oregonlive.com/coronavirus/2020/05/coronavirus-in-oregon-governor-kate-brown-lays-out-the-road-to-reopening-public-life.html>. The Oregonian. 2020 May;
30. <https://www.oregonlive.com/coronavirus/2020/05/coronavirus-in-oregon-governor-kate-brown-lays-out-the-road-to-reopening-public-life.html>.
31. <https://www.npr.org/sections/coronavirus-live-updates/2020/05/13/855782006/wisconsin-supreme-court-overturms-the-states-stay-at-home-order>. NPR. 2020 May 13;
32. <https://acsjournals.onlinelibrary.wiley.com/doi/full/10.3322/caac.21692>. ACS Journal. 2021 Sep;
33. <https://www.aier.org/article/lockdowns-in-taiwan-myths-versus-reality/>. American Institute of Economic Research. 2021 May 20;



34. Tsai HY, Chang YL, Shen CT, Chung WS, Tsai HJ, Chen FM. Effects of the COVID-19 pandemic on breast cancer screening in Taiwan. *Breast*. 2020 Dec 1;54:52–5.
35. <https://web.archive.org/web/20200415104635/https://www.bag.admin.ch/bag/en/home/krankheiten/ausbrueche-epidemien-pandemien/aktuelle-ausbrueche-epidemien/novel-cov/massnahmen-des-bundes.html>. Internet Archive. 2020 Apr 20;
36. <https://www.heidi.news/sante/quel-impact-covid-19-a-t-il-eu-sur-la-lutte-contre-le-cancer-du-sein-en-suisse>. Heidi News. 2020 Oct 1;
37. <https://apnews.com/article/coronavirus-pandemic-health-europe-epidemics-berlin-b61de99739774c1f52b4ba6860054d6d>. AP News. 2021 Nov 25;
38. <https://www.aerztezeitung.de/Politik/Mammographie-Screening-wegen-Corona-Pandemie-ausgesetzt-408072.html>. AerzteZeitung. 2020 Mar 26;
39. Morais S, Antunes L, Rodrigues J, Fontes F, Bento MJ, Lunet N. The impact of the COVID-19 pandemic on the short-term survival of patients with cancer in Northern Portugal. *Int J Cancer*. 2021 Jul 15;149(2):287–96.
40. [https://en.wikipedia.org/wiki/COVID-19\\_lockdown\\_in\\_China](https://en.wikipedia.org/wiki/COVID-19_lockdown_in_China).
41. <https://www.gouvernement.fr/info-coronavirus/les-actions-du-gouvernement>. Gouvernement Français. 2021 May 31;
42. [https://www.ligue-cancer.net/sites/default/files/docs/covid\\_19\\_et\\_cancer\\_-\\_2eme\\_vague\\_-\\_positionnement.pdf#:~:text=La%20Ligue%20r%C3%A9it%C3%A8re%20ses%20demandes%20formul%C3%A9es%20d%C3%A8s%20le,anti%20HPV%20doit%20aussi%20%C3%Aatre%20maintenue%20et%20encourag%C3%A9e](https://www.ligue-cancer.net/sites/default/files/docs/covid_19_et_cancer_-_2eme_vague_-_positionnement.pdf#:~:text=La%20Ligue%20r%C3%A9it%C3%A8re%20ses%20demandes%20formul%C3%A9es%20d%C3%A8s%20le,anti%20HPV%20doit%20aussi%20%C3%Aatre%20maintenue%20et%20encourag%C3%A9e). Ligue contre le cancer. 2020 Nov 20;
43. <https://www.thestar.com/news/canada/2020/07/17/coronavirus-covid-19-updates-toronto-ontario-gta-canada-july-17-2020.html>. Toronto Star. 2020 Jul 17;

44. <https://www2.gov.bc.ca/gov/content/covid-19/info/response>. Canadian government. 2023 Feb 17;
45. [https://en.wikipedia.org/wiki/COVID-19\\_lockdowns](https://en.wikipedia.org/wiki/COVID-19_lockdowns).
46. <https://www.instituteforgovernment.org.uk/data-visualisation/timeline-coronavirus-lockdowns>. Institute for government of UK. 2023 Apr;
47. Greenwood E, Swanton C. Consequences of COVID-19 for cancer care — a CRUK perspective. Vol. 18, Nature Reviews Clinical Oncology. Nature Research; 2021. p. 3–4.
48. Dighe A, Cattarino L, Cuomo-Dannenburg G, Skarp J, Imai N, Bhatia S, et al. Response to COVID-19 in South Korea and implications for lifting stringent interventions. BMC Med. 2020 Oct 9;18(1).
49. Lee K, Suh M, Jun JK, Choi KS. Impact of the COVID-19 Pandemic on Gastric Cancer Screening in South Korea: Results From the Korean National Cancer Screening Survey (2017–2021). J Gastric Cancer. 2022 Oct 1;22(4):264–72.
50. <https://www.rfi.fr/fr/asia-pacifique/20200407-coronavirus-japon-%C3%A9tat-urge>. RFI. 2020 Apr 7;
51. Machii R, Takahashi H. Japanese cancer screening programs during the COVID-19 pandemic: Changes in participation between 2017-2020. Cancer Epidemiol. 2023 Feb 1;82.
52. <https://www.france24.com/en/americas/20210408-brazil-s-bolsonaro-ignores-call-for-new-lockdown-despite-rise-in-covid-19-cases>. France 24. 2021 Apr 8;
53. Ribeiro CM, Correa F de M, Migowski A. Short-term effects of the COVID-19 pandemic on cancer screening, diagnosis and treatment procedures in Brazil: a descriptive study, 2019-2020. Epidemiol Serv Saude. 2022;31(1):e2021405.
54. <https://www.straitstimes.com/singapore/education/schools-to-shift-to-full-home-based-learning-from-april-8#:~:text=Home-based%20learning%20would%20also%20mean%20the%20cancellation%20of,full%20home->

- based%20learning%20from%20next%20week%3A%20PM%20Lee. 2020 Apr 14;
55. <https://www.straitstimes.com/singapore/politics/pm-lee-hsien-loong-to-address-nation-on-covid-19-situation-at-noon-on-oct-9>. 2021 Oct 21;
  56. Chan JJ, Sim Y, Ow SGW, Lim JSJ, Kusumawidjaja G, Zhuang Q, et al. The impact of COVID-19 on and recommendations for breast cancer care: The Singapore experience. Vol. 27, *Endocrine-Related Cancer*. BioScientifica Ltd.; 2020. p. R307–27.
  57. <https://www.thefirstnews.com/article/poland-in-covid-19-lockdown-pm-orders-bars-restaurants-shopping-centres-and-borders-closed---and-cancels-all-flights-11142>. The First News. 2020 Mar 20;
  58. <https://www.dw.com/en/coronavirus-what-are-the-lockdown-measures-across-europe/a-52905137>. DW. 2020 Apr 15;
  59. Krok D, Telka E, Szcześniak M, Falewicz A. Threat Appraisal, Resilience, and Health Behaviors in Recovered COVID-19 Patients: The Serial Mediation of Coping and Meaning-Making. *Int J Environ Res Public Health*. 2023 Feb 1;20(4).
  60. <https://www.financialexpress.com/lifestyle/health/lockdown-5-0-guidelines-state-wise-lockdown-extension-5-0-rules-latest-updates/1975135/>. India News. 2020 May 30;
  61. <https://www.bbc.com/news/world-asia-india-52086274>. BBC. 2020 Mar 30;
  62. Pramesh CS, Chinnaswamy G, Sengar M, Ranganathan P, Badwe R. COVID-19 and cancer care in India. Vol. 2, *Nature Cancer*. Nature Research; 2021. p. 1257–9.
  63. WHO. La COVID-19 a un impact catastrophique sur le cancer. 2022 Feb 3;
  64. Angelini M, Teglia F, Astolfi L, Casolari G, Boffetta P. Decrease of cancer diagnosis during COVID-19 pandemic: a systematic review and meta-analysis. *Eur J Epidemiol*. 2023 Jan 3;38(1):31–8.
  65. Alagoz O, Lowry KP, Kurian AW, Mandelblatt JS, Ergun MA, Huang H, et al. Impact of the COVID-19 Pandemic on Breast Cancer Mortality in the US:

- Estimates From Collaborative Simulation Modeling. *JNCI: Journal of the National Cancer Institute*. 2021 Nov 2;113(11):1484–94.
66. Maringe C, Spicer J, Morris M, Purushotham A, Nolte E, Sullivan R, et al. The impact of the COVID-19 pandemic on cancer deaths due to delays in diagnosis in England, UK: a national, population-based, modelling study. *Lancet Oncol*. 2020 Aug;21(8):1023–34.
67. Berrian J, Liu Y, Ezenwajiaku N, Moreno-Aspitia A, Holton SJ, Toriola AT, et al. Impact of the COVID-19 pandemic on breast, colorectal, lung, and prostate cancer stage at diagnosis according to race. *Cancer Med*. 2023 Mar 20;12(6):7381–8.
68. Teglia F, Angelini M, Astolfi L, Casolari G, Boffetta P. Global Association of COVID-19 Pandemic Measures With Cancer Screening: A Systematic Review and Meta-analysis. *JAMA Oncol*. 2022 Sep 1;8(9):1287–93.
69. Angelini M, Teglia F, Astolfi L, Casolari G, Boffetta P. Decrease of cancer diagnosis during COVID-19 pandemic: a systematic review and meta-analysis. *Eur J Epidemiol*. 2023 Jan;38(1):31–8.
70. Maringe C, Spicer J, Morris M, Purushotham A, Nolte E, Sullivan R, et al. The impact of the COVID-19 pandemic on cancer deaths due to delays in diagnosis in England, UK: a national, population-based, modelling study. *Lancet Oncol*. 2020 Aug 1;21(8):1023–34.
71. Page MJ, McKenzie JE, Bossuyt PM, Boutron I, Hoffmann TC, Mulrow CD, et al. The PRISMA 2020 statement: an updated guideline for reporting systematic reviews. *BMJ*. 2021 Mar;372:n71.
72. <https://jamanetwork.com/journals/jamasurgery/article-abstract/2778476>.
73. <https://www.nhlbi.nih.gov/health-topics/study-quality-assessment-tools>.
74. Hartung J, Knapp G. A refined method for the meta-analysis of controlled clinical trials with binary outcome. *Stat Med*. 2001 Dec 30;20(24):3875–89.

75. Hartung J, Knapp G. On tests of the overall treatment effect in meta-analysis with normally distributed responses. *Stat Med*. 2001 Jun 30;20(12):1771–82.
76. Partlett C, Riley RD. Random effects meta-analysis: Coverage performance of 95% confidence and prediction intervals following REML estimation. *Stat Med*. 2017 Jan 30;36(2):301–17.
77. Sidik K, Jonkman JN. Simple heterogeneity variance estimation for meta-analysis [Internet]. Vol. 54, *Appl. Statist*. 2005. Available from: <https://academic.oup.com/jrsssc/article/54/2/367/7112945>
78. Viechtbauer W. Confidence intervals for the amount of heterogeneity in meta-analysis. *Stat Med*. 2007 Jan 15;26(1):37–52.
79. Senn SJ. Overstating the evidence: double counting in meta-analysis and related problems. *BMC Med Res Methodol*. 2009 Feb 13;9:10.
80. Rücker G, Schwarzer G, Carpenter J. Arcsine test for publication bias in meta-analyses with binary outcomes. *Stat Med*. 2008 Feb 28;27(5):746–63.
81. Thompson SG, Sharp SJ. Explaining heterogeneity in meta-analysis: a comparison of methods. *Stat Med*. 1999 Oct 30;18(20):2693–708.
82. Balduzzi S, Rücker G, Schwarzer G. How to perform a meta-analysis with R: a practical tutorial. *Evid Based Ment Health*. 2019 Nov;22(4):153–60.
83. Eijkelboom AH, de Munck L, Lobbes MBI, van Gils CH, Wesseling J, Westenend PJ, et al. Impact of the suspension and restart of the Dutch breast cancer screening program on breast cancer incidence and stage during the COVID-19 pandemic. *Prev Med (Baltim)*. 2021 Oct 1;151:106602.
84. Eijkelboom AH, de Munck L, Vrancken Peeters MJTFD, Broeders MJM, Strobbe LJA, Bos MEMM, et al. Impact of the COVID-19 pandemic on diagnosis, stage, and initial treatment of breast cancer in the Netherlands: a population-based study. *J Hematol Oncol*. 2021 Dec 1;14(1).
85. Vanni G, Pellicciaro M, Materazzo M, Pedini D, Portarena I, Buonomo C, et al. Advanced stages and increased need for adjuvant treatments in breast

- cancer patients: The effect of the one-year covid-19 pandemic. *Anticancer Res.* 2021 May 1;41(5):2689–96.
86. Vanni G, Tazzioli G, Pellicciaro M, Materazzo M, Paolo O, Cattadori F, et al. Delay in breast cancer treatments during the first COVID-19 lockdown. a multicentric analysis of 432 patients. *Anticancer Res.* 2020 Dec 1;40(12):7119–25.
  87. Berrian J, Liu Y, Ezenwajiaku N, Moreno-Aspitia A, Holton SJ, Toriola AT, et al. Impact of the COVID-19 pandemic on breast, colorectal, lung, and prostate cancer stage at diagnosis according to race. *Cancer Med.* 2022 Mar 1;
  88. Resende CAA, Fernandes Cruz HM, Matheus Costa E Silva ;, Paes RD, Pharm B, Dienstmann R, et al. Impact of the COVID-19 Pandemic on Cancer Staging: An Analysis of Patients With Breast Cancer From a Community Practice in Brazil. *JCO Global Oncol* [Internet]. 2022;8:2200289. Available from: [https://doi](https://doi.org/10.1200/JGO.2022.8.2200289).
  89. Fanning JE, Kalsi S, Krag DN. Impact of the COVID-19 pandemic on melanoma diagnosis and presentation: a `review. *Int J Dermatol.* 2023 Apr 19;
  90. Hasegawa N, Rusakevich A, Bernicker E, Teh BS, Scheffler A. Comparison of Tumor Size and Gene Expression at Presentation in Uveal Melanoma Patients before and during the COVID-19 Pandemic. *Ocul Oncol Pathol.* 2022 Nov 1;8(3):156–60.
  91. Seretis K, Bounas N, Gaitanis G, Bassukas I. A Meta-Analysis on the Impact of the COVID-19 Pandemic on Cutaneous Melanoma Diagnosis in Europe. Vol. 14, *Cancers.* MDPI; 2022.
  92. Jaitly J, Mavilakandy A, Naeem M, Reddy R V, Goodman L, Johnson N, et al. Lung cancer recovery focus post pandemic: an income-deprived area paradigm. *Clin Med (Lond).* 2023 Jan;23(1):38–44.
  93. Taheri D, Jahanshahi F, Khajavi A, Kafi F, Pouramini A, Farsani RM, et al. The Impact of Covid-19 Pandemic on Genitourinary Cancers Stage and Grade. *Clin Genitourin Cancer.* 2023 Feb 1;21(1):84–90.

94. Castonguay M, El Sayed R, Richard C, Vachon MF, Nassabein R, Charpentier D, et al. COVID-19 Impact on Diagnosis and Staging of Colorectal Cancer: A Single Tertiary Canadian Oncology Center Experience. *Current Oncology*. 2022 May 1;29(5):3282–90.
95. Elamin D, Ozgur I, Steele SR, Khorana AA, Jia X, Gorgun E. Impact of COVID-19 pandemic on treatment of colorectal cancer patients. *Am J Surg*. 2023 May 1;
96. Frazzoni L, Dajti E, Silviu Ungureanu B. The impact of the COVID-19 pandemic on colorectal and gastric cancer diagnosis, disease stage and mortality [Internet]. Available from: [www.cbs.gov.il](http://www.cbs.gov.il)
97. Park YY, Lee J, Lee K yong, Oh ST. Short-Term Impact of Temporary Shutdown of a University-Affiliated Hospital on Patients With Colorectal Cancer During the Coronavirus Disease 2019 Pandemic. *J Korean Med Sci*. 2022;37(21).
98. Pararas N, Pikouli A, Papaconstantinou D, Bagias G, Nastos C, Pikoulis A, et al. Colorectal Surgery in the COVID-19 Era: A Systematic Review and Meta-Analysis. Vol. 14, *Cancers*. MDPI; 2022.
99. Battisti F, Falini P, Gorini G, de Bianchi PS, Armaroli P, Giubilato P, et al. Cancer screening programmes in Italy during the COVID-19 pandemic: an update of a nationwide survey on activity volumes and delayed diagnoses. *Ann Ist Super Sanita*. 2022;58(1):16–24.
100. Mentrasti G, Cantini L, Zichi C, D’Ostilio N, Gelsomino F, Martinelli E, et al. Alarming Drop in Early Stage Colorectal Cancer Diagnoses After COVID-19 Outbreak: A Real-World Analysis from the Italian COVID-DELAY Study. *Oncologist*. 2022 Sep 2;27(9):e723–30.
101. Mentrasti G, Cantini L, Vici P, D’Ostilio N, La Verde N, Chiari R, et al. Rising incidence of late stage breast cancer after COVID-19 outbreak. Real-world data from the Italian COVID-DELAY study. *Breast*. 2022 Oct 1;65:164–71.
102. Garrido-Cantero G, Longo F, Hernández-González J, Pueyo Á, Fernández-Aparicio T, Dorado JF, et al. Impact of the COVID-19 Pandemic on Cancer Diagnosis in Madrid (Spain) Based on the RTMAD Tumor Registry (2019–

- 2021). *Cancers (Basel)* [Internet]. 2023 Mar 14;15(6):1753. Available from: <https://www.mdpi.com/2072-6694/15/6/1753>
103. Tsai HY, Chang YL, Shen CT, Chung WS, Tsai HJ, Chen FM. Effects of the COVID-19 pandemic on breast cancer screening in Taiwan. *Breast*. 2020 Dec 1;54:52–5.
  104. Wang CJ, Ng CY, Brook RH. Response to COVID-19 in Taiwan: Big Data Analytics, New Technology, and Proactive Testing. Vol. 323, *JAMA - Journal of the American Medical Association*. American Medical Association; 2020. p. 1341–2.
  105. Ramanakumar A V., Annie B, Frederic L, Christine B, Cathy R, Jean L. Evaluating the impact of COVID-19 on cancer declarations in Quebec, Canada. *Cancer Med*. 2022 Mar 1;
  106. Duffy SW, Seedat F, Kearins O, Press M, Walton J, Myles J, et al. The projected impact of the COVID-19 lockdown on breast cancer deaths in England due to the cessation of population screening: a national estimation. *Br J Cancer*. 2022 May;126(9):1355–61.
  107. Yong JH, Mainprize JG, Yaffe MJ, Ruan Y, Poirier AE, Coldman A, et al. The impact of episodic screening interruption: COVID-19 and population-based cancer screening in Canada. *J Med Screen*. 2021 Jun;28(2):100–7.
  108. Ward ZJ, Walbaum M, Walbaum B, Guzman MJ, Jimenez de la Jara J, Nervi B, et al. Estimating the impact of the COVID-19 pandemic on diagnosis and survival of five cancers in Chile from 2020 to 2030: a simulation-based analysis. *Lancet Oncol*. 2021 Oct;22(10):1427–37.
  109. Guven DC, Sahin TK, Aktepe OH, Yildirim HC, Aksoy S, Kilickap S. Perspectives, Knowledge, and Fears of Cancer Patients About COVID-19. *Front Oncol*. 2020 Aug 28;10.
  110. Gebbia V, Piazza D, Valerio MR, Borsellino N, Firenze A. Patients With Cancer and COVID-19: A WhatsApp Messenger-Based Survey of Patients' Queries, Needs, Fears, and Actions Taken. *JCO Glob Oncol*. 2020 May;6:722–9.



111. Momenimovahed Z, Salehiniya H, Hadavandsiri F, Allahqoli L, Günther V, Alkatout I. Psychological Distress Among Cancer Patients During COVID-19 Pandemic in the World: A Systematic Review. *Front Psychol.* 2021;12:682154.
112. Jansen L, Schröder CC, Emrich K, Holleczeck B, Pritzkeleit R, Brenner H. Disclosing progress in cancer survival with less delay. *Int J Cancer.* 2020 Aug 1;147(3):838–46.
113. Chen SC. Taiwan's experience in fighting COVID-19. *Nat Immunol.* 2021 Apr 26;22(4):393–4.
114. Gorin SNS, Jimbo M, Heizelman R, Harmes KM, Harper DM. The future of cancer screening after COVID-19 may be at home. *Cancer.* 2021 Feb 15;127(4):498–503.
115. Parker SL, Deshmukh AA, Chen B, Lairson DR, Daheri M, Vernon SW, et al. Perceived barriers to cervical cancer screening and motivators for at-home human papillomavirus self-sampling during the COVID-19 pandemic: Results from a telephone survey. *medRxiv.* 2022 Nov 22;
116. Sharpless NE. COVID-19 and cancer. *Science (1979).* 2020 Jun 19;368(6497):1290–1290.
117. Burbury K, Wong Z, Yip D, Thomas H, Brooks P, Gilham L, et al. Telehealth in cancer care: during and beyond the COVID-19 pandemic. *Intern Med J.* 2021 Jan 11;51(1):125–33.
118. Mo A, Chung J, Eichler J, Yukelis S, Feldman S, Fox J, et al. Breast cancer survivorship care during the COVID-19 pandemic within an urban New York Hospital System. *The Breast.* 2021 Oct;59:301–7.
119. Hunter B, Hindocha S, Lee RW. The Role of Artificial Intelligence in Early Cancer Diagnosis. *Cancers (Basel).* 2022 Mar 16;14(6):1524.
120. Goncalves S, Fong PC, Blokhina M. Artificial intelligence for early diagnosis of lung cancer through incidental nodule detection in low- and middle-income countries-acceleration during the COVID-19 pandemic but here to stay. *Am J Cancer Res.* 2022;12(1):1–16.

121. Huivaniuk et al. Cancer care during armed conflict: Factors associated with adult patient transfer for treatment abroad during the war in Ukraine. *Annals of Oncology*. 2023 Oct;
122. UNHCR - The UN Refugee Agency. *Global Trends in Forced Displacement*. 2020;
123. Caglevic C, Rolfo C, Gil-Bazo I, Cardona A, Sapunar J, Hirsch FR, et al. The Armed Conflict and the Impact on Patients With Cancer in Ukraine: Urgent Considerations. *JCO Glob Oncol*. 2022 Aug;(8).
124. <https://www.nhlbi.nih.gov/health-topics/study-quality-assessment-tools>. 2021.

## Table des figures

---

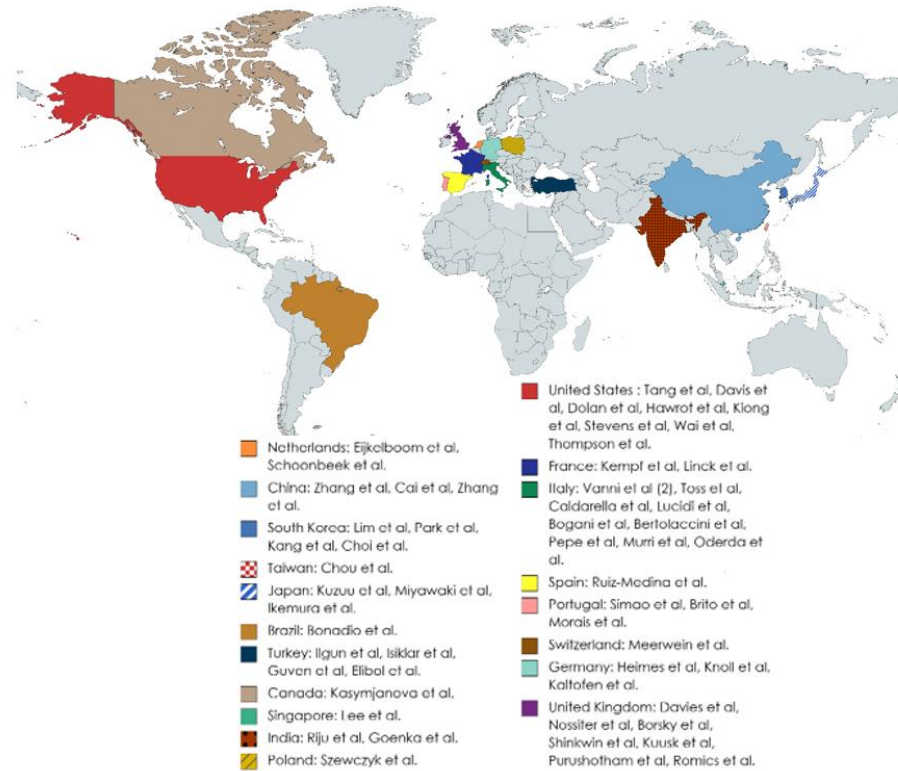
Figure 1 : Study selection flowchart .....	30
Figure 2 : Metastatic tumor rates before and after the Sars Cov2 outbreak, according to study country. ....	32
Figure 3 : Funnel plot for assessment of study bias. ....	33
Figure 4 : Metastatic tumor rates before and after the pandemic, according to cancer type. .....	34
Figure 5 : Rates of stage I-II versus III-IV before and after the pandemic according to study country .....	35
Figure 6: Rates of stage I-II versus III-IV before and after the pandemic according to cancer type.....	36
Figure 7: Rates of stage I-II versus III before and after the pandemic according to study country.....	37
Figure 8: Rates of stage I-II versus III before and after the pandemic, according to cancer type.....	38

## Supplementary materials

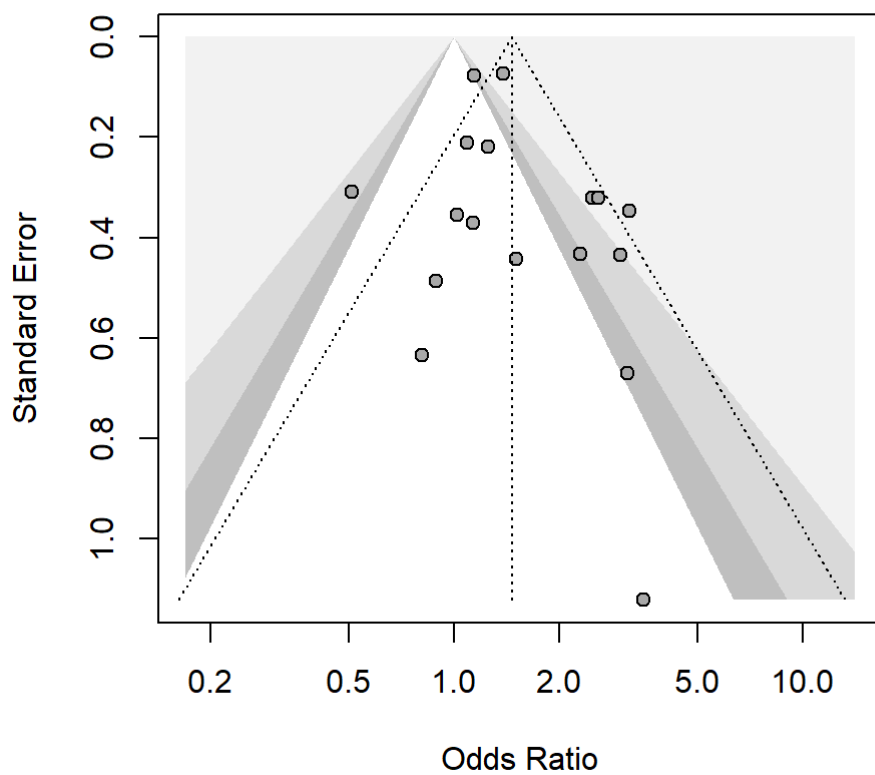
---

FIGURE S1: LOCATION OF INCLUDED STUDIES .....	64
FIGURE S2. FUNNEL PLOT FOR SUBGROUP METASTATIC VS NON-METASTATIC ANALYSIS ON BREAST CANCER.....	66
TABLE S1. STUDY CHARACTERISTICS .....	67
TABLE S2. STUDY QUALITY ASSESSMENT.....	91
TABLE S3: SYNTHESIS OF FIRST NATIONAL LOCKDOWNS AND CANCER SCREENING DISRUPTIONS .....	94
APPENDIX S1. PUBMED AND EMBASE SEARCH EQUATIONS .....	96
APPENDIX S2. INCLUSION AND EXCLUSION CRITERIA FOR ARTICLE SELECTION .....	104
APPENDIX S3. LIST OF DATA ELEMENTS WE EXTRACTED FROM INCLUDED ARTICLES .....	105
APPENDIX S4. CLASSIFICATION OF PRIMARY CANCER TYPES .....	106

**Figure S1: Location of included studies**



**Figure S2. Funnel plot for subgroup metastatic vs non-metastatic analysis on breast cancer**



**Table S1. Study characteristics**

<b>Title</b>	<b>Study pop.</b>	<b>Control pop.</b>	<b>Exposition</b>	<b>Staging</b>
Changes in gynecologic and breast cancer diagnoses during the first wave of the COVID-19 pandemic: analysis from a tertiary academic gynecologic center in Germany (1)	patients diagnosed with gynecologic or breast cancer between January and June 2020  N= 236	Same pop. in 2019  N= 261	COVID 19	TNM
The impact of COVID-19 pandemic on the rate of newly diagnosed gynecological and breast cancers: a tertiary center perspective (2)	patients diagnosed with gynecological or breast cancer from March 2020 to April 2020 and November to December 2020  N= 371	Same periods in 2019  N= 240	COVID 19	TNM/ FIGO Stages
Has the COVID-19 Pandemic Caused Upshifting in Colorectal Cancer Stage? (3)	patients diagnosed with colorectal cancer for the first time from January to June 2020.  N= 715	Same period from 2017 to 2019  N= 2514	COVID 19	Stage

Title	Study pop.	Control pop.	Exposition	Staging
COVID-19 is Affecting the Presentation and Treatment of Melanoma Patients in the Northeastern United States (4)	patients undergoing surgical management for a primary diagnosis of cutaneous melanoma from May 2020-December 2020  N= 313	Same pop. from August 2019 to March 2020  N= 375	COVID 19	Stage
Impact of the COVID-19 pandemic on breast and cervical cancer stage at diagnosis in Brazil (5)	Patients with histologically confirmed breast or cervical carcinoma of any histologic type.from from 1 September 2020 to 31 January 2021  N= 312	Same pop. from from 1 September 2019 to 31 January 2020  N= 517	COVID 19	Stages



Title	Study pop.	Control pop.	Exposition	Staging
The impact of the COVID-19 pandemic on oncological disease extent at FDG PET/CT staging: the ONCOVIPET study (6)	Only patients ≥18 years of age with a cancer diagnosis and FDG-avid tumours, who performed a whole-body PET/CT for staging purposes for Lung, Gynecologic, Gastrointestinal, lymphoma, breast, head and neck, myeloma, melanoma from June 1 to October 31, 2020.  N=371	Same pop. from June 1 to October 31, 2019  N= 240	Covid 19	TNM
Gastrointestinal Cancer Stage at Diagnosis Before and During the COVID-19 Pandemic in Japan (7)	Patients who were diagnosed with gastrointestinal cancer from March 2020 to December 2020  N=949	Same pop. from January 2017 to February 2020  N= 4218	COVID 19	Stages

Title	Study pop.	Control pop.	Exposition	Staging
Significant Decrease in Annual Cancer Diagnoses in Spain during the COVID-19 Pandemic: A Real-Data Study (8)	All patients diagnosed between 13 March 2020 and 13 March 2021 for 24 cancer types ( cf study )  N= 2340	Same pop from between 13 March 2019 and 13 March 2020  N= 2825	COVID 19	Stages
Head and Neck Cancer During Covid-19 Pandemic: Was there a Diagnostic Delay? (9)	Patients with newly diagnosed laryngeal, salivary, skin of the head and neck, nasal, paranasal, oral, pharyngeal and occult cancer from from March 1st, 2020 to October 15th, 2020.  N= 125	Same pop. from from March 1st, 2019 to October 15th, 2019.  N= 139	Covid 19	Stages
How Do Breast Cancer Patients Present Following COVID-19 Early Peak in a Breast Cancer Center in Turkey? (10)	New patients diagnosed for breast cancer between May and June 2020  N= 36	Same pop. from May and June 2017-2019  N= 42	COVID 19	Notion of Early/ Advanced or Metastatic disease.

Title	Study pop.	Control pop.	Exposition	Staging
Impact of the COVID-19 pandemic on the diagnosis and treatment of men with prostate cancer (11)	all patients in England newly diagnosed with prostate cancer between between March, 23 and December, 31 2020  N= 15360	Same pop. during same period in 2019  N= 23715	COVID 19	Stage
Study of the gastrointestinal tumor progression during the COVID-19 epidemic in Wuhan (12)	Patients with gastro intestinal tumor admitted in Wuhan Union Hospital from March To April 2020  N= 137	Same pop. in same period in 2019.  N= 351	COVID 19	pTNM
Time to Treatment Initiation for Breast Cancer During the 2020 COVID-19 Pandemic (13)	New histologic diagnosis of invasive breast cancer, ductal carcinoma in situ (DCIS), or lobular carcinoma in situ (LCIS) between January 1, 2020, and May 15, 2020  N= 162	Same pop. between 01/01/2018 and 15/05/2018  N= 198	COVID 19	Stage

<b>Title</b>	<b>Study pop.</b>	<b>Control pop.</b>	<b>Exposition</b>	<b>Staging</b>
Advanced Stages and Increased Need for Adjuvant Treatments in Breast Cancer Patients: The Effect of the One-year COVID-19 Pandemic (14)	All patients with a diagnosis of breast cancer from February, 21, 2020 to February, 21 2021  N= 203	Same pop. from February, 21, 2019, to February, 20, 2020  N= 174	COVID 19	TNM
Impact of the first surge of the COVID-19 pandemic on a tertiary referral centre for kidney cancer (15)	Patients underwent renal surgery, from 18 March 2020 until 30 September 2020.  N= 104	Same pop. from April 2019 to March 2020  N= 247	COVID 19	cTNM/ pTNM
Prostate Cancer Diagnosis and Management During One Year of the COVID-19 Pandemic (16)	Men with Pca between March 2020 and March 2021  N= 98	Same population between March 2019 and 2020  N= 187	COVID 19	ISUP
Digestive Oncology in the COVID-19 Pandemic Era (17)	patients with an inaugural digestive cancer diagnosis from March to August 2020  N= 91	Same pop. same period In 2018  N= 128	COVID 19	Stage

Title	Study pop.	Control pop.	Exposition	Staging
The impact of national non-pharmaceutical interventions ('lockdowns') on the presentation of cancer patients (18)	patients newly diagnosed with cancer in the South East London Cancer Alliance from April 2020 to September 2020. For lung, prostate, colorectal and breast cancer.  N= 559	Same pop. from March 2020 to April 2020  N= 1038	COVID 19	Notions of Early and Late disease
Analysis of Early Impact of COVID-19 on Presentation and Management of Oral Cancers - an Experience from a Tertiary Care Hospital in South India (19)	All patients primarily concerned with oral cancers and who underwent primary surgical management for oral cancers with a curative intend from April 2020 to June 2020  N= 26	Same pop. from April 2019 to March 2020  N= 192	COVID 19	Stage

Title	Study pop.	Control pop.	Exposition	Staging
Consequences of the COVID-19 Pandemic and Governmental Containment Policies on the Detection and Therapy of Oral Malignant Lesions-A Retrospective, Multicenter Cohort Study from Germany (20)	Patients with a histopathological confirmed diagnosis of oral cancer from March, 13, 2020- November 1 2020.  N= 205	Same pop. in same periods in 2018 and 2019.  N= 425	COVID 19	TNM
The impact of the COVID-19 pandemic on the short-term survival of patients with cancer in Northern Portugal (21)	Cases of invasive tumors of the esophagus, skin melanoma, pancreas and prostate diagnosed between 2 March and 1 July 2020  N= 689	Same pop. in same period in 2019.  N= 1264	COVID 19	Stage
Delay in Breast Cancer Treatments During the First COVID-19 Lockdown. A Multicentric Analysis of 432 Patients (22)	Patients with breast surgery from March 11, 2020 to May 30, 2020.  N= 37	Same pop. in same period from March 11, 2019 to May 30, 2019  N= 46	COVID 19	TNM/ Grade

Title	Study pop.	Control pop.	Exposition	Staging
Impact of COVID-19 on presentation, staging, and treatment of head and neck mucosal squamous cell carcinoma (23)	new patients who presented to the head and neck surgical oncology clinic of Vanderbilt in Nashville from March to July 2020  N= 134	Same pop. in same period in 2019.  N= 134	COVID 19	cTNM/ pTNM
The Impact of COVID-19 on the Diagnosis and Treatment of Lung Cancer at a Canadian Academic Center: A Retrospective Chart Review (24)	patient diagnosed with lung cancer between 1 March 2020 and 28 February 2021  N= 103	Same pop. between 1 March 2019 and 29 February 2020.  N= 130	COVID 19	Notion of Early / Locoregional and Advanced disease
Reduction in healthcare services during the COVID-19 pandemic: Patient screening based on symptoms is an effective strategy for avoiding delayed laryngeal cancer diagnosis (25)	new histological diagnosis of laryngeal SCC from March 2020 to December 2020.  N= 19	Same pop. from March 2019 to December 2019.  N= 25	COVID 19	Stage

Title	Study pop.	Control pop.	Exposition	Staging
The "collateral damage" of the war on COVID-19: impact of the pandemic on the care of epithelial ovarian cancer (26)	Patient with EOC diagnosed and treated between 1st January 2020 and 31st December 2020.  N= 39	Same pop. between 1st January 2019 and 30th September 2019.  N= 43	COVID 19	Stage
Newly diagnosed cancer and the COVID-19 pandemic: tumour stage migration and higher early mortality (27)	newly referred patients with cancer from March to December 2020. Cancer: breast, CRC, NSCLC, melanoma, cervix.  N= 383	Same pop. in same period in 2019.  N= 539	COVID 19	Stage
Lung cancer stage distribution from before COVID-19 through 18 months of the pandemic: the experience of a large-volume oncological referral centre (28)	Patients with lung cancer analyzed by pathological staging review by a multidisciplinary tumour board from January to July 2020 and 2021  N= 255	Same pop. from January to July 2019.  N= 122	COVID 19	Stage



Title	Study pop.	Control pop.	Exposition	Staging
COVID-19 pandemic impact on uro-oncological disease outcomes at an Italian tertiary referral center (29)	Patients treated for suspected or confirmed urologic cancer between January and December 2020.  N= 186	Same pop. between January and December 2019.  N= 207	COVID 19	cTNM
Impact of the Coronavirus Disease-2019 Pandemic on Pancreaticobiliary Disease Detection and Treatment (30)	Newly diagnosed pancreaticobiliary cancer from 7 April to 25 May 2020 AND 26 May to 31 July.  N= 43	Same pop. from 1 April 2018 to 6 April 2020.  N= 144	COVID 19	Stages
Impact of Coronavirus Disease 2019 on Clinical Characteristics in Patients With Lung Cancer: A Large Single-Centre Retrospective Study (31)	patients with lung cancer in Mianyang Central Hospital from February to July 2020.  N= 231	Same pop. from February to July 2019.  N= 156	COVID 19	Stage

Title	Study pop.	Control pop.	Exposition	Staging
Thyroid surgery during coronavirus-19 pandemic phases I, II and III: lessons learned in China, South Korea, Iran and Italy (32)	Patients treated at the Division of Thyroid Surgery of the China-Japan Union Hospital of Jilin University from January 25 to April 20, 2020  N= 328	Same pop. from January 25 to April 20, 2019.  N= 731	COVID 19	TNM
Pattern of breast cancer presentation during the COVID-19 pandemic: results from a cohort study in the UK (33)	all new breast cancer diagnoses from May to October 2020.  N= 163	Same pop. from May to October 2019.  N= 276	COVID 19	Stage
Head and neck surgery during the coronavirus-19 pandemic: The University of California San Francisco experience (34)	patients undergoing head and neck or reconstructive surgery between March 16, 2020 and April 16, 2020.  N= 22	Same pop. between March 16, 2019 and April 16, 2019.  N= 30	COVID 19	Stage
Delayed Breast Cancer Detection in an Asian Country (Taiwan) with Low COVID-19 Incidence (35)	All patients receiving a breast biopsy between January 21 and July 31, 2020.  N= 115	Same pop Between January 21 and July 31, 2019.  N= 128	COVID 19	Invasive VS Non Invasive

<b>Title</b>	<b>Study pop.</b>	<b>Control pop.</b>	<b>Exposition</b>	<b>Staging</b>
Two-month stop in mammographic screening significantly impacts on breast cancer stage at diagnosis and upfront treatment in the COVID era (36)	women diagnosed with BC in the province of Modena between May 2020 and July 2020.  N= 164	Same pop. between May and June 2019.  N= 183	COVID 19	Stage
Diagnostic pathway and stage migration of sinonasal malignancies in the era of the COVID-19 pandemic (37)	patients treated for sinonasal malignancies between January 2020 and December 2020.  N= 19	Same pop between January 2018 and December 2019.  N= 30	COVID 19	cTNM/ Stage
Impact of the COVID-19 pandemic on diagnosis, stage, and initial treatment of breast cancer in the Netherlands: a population-based study (38)	Women older than 18 years and diagnosed with breast cancer during weeks 2–17 of 2020.  N= 4769	Same pop. during Weeks 2-17 of 2018 and 2019.  N= 11502	COVID 19	Stage
The Impact of the COVID-19 Pandemic on Breast Cancer Patients (39)	patients with invasive breast cancer treated between March 2020 and March 2021.  N= 176	Same pop. between between March 2019 and March 2020.  N= 206	COVID 19	Stage

<b>Title</b>	<b>Study pop.</b>	<b>Control pop.</b>	<b>Exposition</b>	<b>Staging</b>
Impact of the coronavirus disease 2019 pandemic on first-visit patients with oesophageal cancer in the first infection wave in Saitama prefecture near Tokyo: a single-centre retrospective study (40)	patients with new oesophageal cancer who first visited our hospital from April 2020 to March 2021.  N= 168	Same pop. from April 2018 to March 2020.  N= 378	COVID 19	cTNM
The impact of the COVID-19 pandemic on the management of head and neck cancer patients at a tertiary care institution in Poland (41)	all head and neck cancer patients who presented to the multidisciplinary tumour board (MTB) during the 12-month period from March 1, 2020 to February 28, 2021.  N= 340	Same pop. from February 1, 2019 to February 28, 2020.  N= 278	COVID 19	Locally Advanced, Regional, Advanced disease.
Characteristics and patterns of care of endometrial cancer before and during COVID-19 pandemic (42)	newly diagnosed EC treated in Italy from April 1, 2020 to March 31, 2021.  N= 2446	Same pop. from March 1, 2019 to February 29, 2020.  N= 2718	COVID 19	FIGO Stage

Title	Study pop.	Control pop.	Exposition	Staging
Impact of the COVID-19 Pandemic on Surgical Treatment Patterns for Colorectal Cancer in a Tertiary Medical Facility in Korea (43)	Patients with colon and rectal cancer who underwent surgery at the Asan Medical Center March to September 2020.  N= 643	Same pop. from same period in 2019.  N= 1413	COVID 19	Stage
Esophagectomy for Esophageal Cancer Performed During the Early Phase of the COVID-19 Pandemic (44)	all patients who underwent esophagectomy for esophageal cancer from March 1, 2020 to June 30, 2020.  N= 32	Same pop. from January 1, 2019, to December 31, 2019.  N= 67	COVID 19	Stage
Impact of two waves of Sars-Cov2 outbreak on the number, clinical presentation, care trajectories and survival of patients newly referred for a colorectal cancer:  A French multicentric cohort study from a large group of University hospitals (45)	new CRC cases between 1 January 2020 and 31 December 2020.  N= 176	Same pop. in Same period in 2018 and 2019.  N= 413	COVID 19	Stage

Title	Study pop.	Control pop.	Exposition	Staging
Impact of the COVID-19 Pandemic on the Diagnosis and Surgery of Breast Cancer: A Multi-Institutional Study (46)	patients diagnosed with breast cancer from 1 February to 31 July 2020.  N= 1023	Same pop in same period in 2019.  N= 1044	COVID 19	Stage
Fewer head and neck cancer diagnoses and faster treatment initiation during COVID-19 in 2020: A nationwide population-based analysis (47)	all patients with a pathologically confirmed first primary head and neck malignancy from 1 June to 31 December 2020.  N= 1641	Same pop. in same periods in 2018-2019.  N= 3287	COVID 19	Stage
Cervical cancer and COVID-an assessment of the initial effect of the pandemic and subsequent projection of impact for women in England: A cohort study (48)	all cervical cancers between May and October 2020.  N= 152	Same pop. between May and October 2019.  N= 208	COVID 19	Stage

Title	Study pop.	Control pop.	Exposition	Staging
The effect of COVID-19 pandemic on laryngeal cancer in a tertiary referral center (49)	patients who operated due to laryngeal cancer in a tertiary referral hospital's ENT department, period not clear.  N= 40	Same pop, period not clear.  N= 57	COVID 19	cTNM
Care in the time of COVID-19: impact on the diagnosis and treatment of breast cancer in a large, integrated health care system (50)	patients with breast cancer diagnosed between March 17 and May 17, 2020.  N= 247	Same pop. between March 17 and May 17, 2019.  N= 703	COVID 19	cTNM/ Grade
Collateral effects of the coronavirus disease 2019 pandemic on lung cancer diagnosis in Korea (51)	patients, aged 18 years or older, who were diagnosed with pathological lung cancer between February and June 2020.  N= 169	Same pop between February and June during 2017–2019.  N= 443.	COVID 19	Stage

<b>Title</b>	<b>Study pop.</b>	<b>Control pop.</b>	<b>Exposition</b>	<b>Staging</b>
COVID-19 and the emergency presentation of colorectal cancer (52)	Patients with diagnosis of Colorectal adenocarcinoma in 2020.  N= 267	Same pop. in 2018-2019.  N= 539	COVID 19	pTNM
Impact of the Novel Coronavirus 2019 (COVID-19) Pandemic on Head and Neck Cancer Care (53)	Patients over 18 years of age who presented for head and neck oncologic care from March 18, 2020, to May 20, 2020.  N= 117	Same pop. in same period in 2019.  N= 69	COVID 19	cTNM
Did the COVID-19 lockdown result in a delay of colorectal cancer presentation and outcomes? A single centre review (54)	Initial and revised diagnosis between 7/4/20 and 7/10/20.  N= 53	Same pop. between 6/10/19 and 6/4/20.  N= 38	COVID 19	pTNM
What Has Changed During the COVID-19 Pandemic? - The Effect on an Academic Breast Department in Portugal (55)	Breast cancer patients between March 2020 and March 2021.  N= 97	Same pop. same period one year previously.  N= 162	COVID 19	Stage



Title	Study pop.	Control pop.	Exposition	Staging
The impact of COVID-19 on head and neck cancer diagnosis and disease extent (56)	Patients presenting with newly diagnosed or recurrent HNC from May 14, 2020 to June 18, 2020.  N= 117	Same pop. in same period from from May 16, 2019 to June 20, 2019.  N= 156	COVID 19	cTNM
Impact of the COVID-19 lockdown in France on the diagnosis and staging of breast cancers in a tertiary cancer centre (57)	patients who underwent an imaging-guided percutaneous breast biopsy performed from January to July 2020.  N= 134	Same period in 2019.  N= 120	Covid 19	TNM
A prospective cohort study of the safety of breast cancer surgery during COVID-19 pandemic in the West of Scotland (58)	People with surgical treatment for invasive or non-invasive breast cancer between 23 March 2020 and 15 May 2020.  N= 168	Same pop. in 2015.  N= 1390	COVID 19	cTNM/ pTNM/ Grade

## **References:**

1. Kaltofen T, Hagemann F, Harbeck N, et al. Changes in gynecologic and breast cancer diagnoses during the first wave of the COVID-19 pandemic: analysis from a tertiary academic gynecologic center in Germany. *Arch Gynecol Obstet*. Published online 2021. doi:10.1007/S00404-021-06211-7
2. Knoll K, Reiser E, Leitner K, et al. The impact of COVID-19 pandemic on the rate of newly diagnosed gynecological and breast cancers: a tertiary center perspective. *Arch Gynecol Obstet*. Published online 2021. doi:10.1007/S00404-021-06259-5
3. Lim JH, Lee WY, Yun SH, et al. Has the COVID-19 pandemic caused upshifting in colorectal cancer stage? *Ann Coloproctol*. 2021;37(4):253-258. doi:10.3393/AC.2021.00269.0038
4. Davis CH, Ho J, Greco SH, et al. COVID-19 is Affecting the Presentation and Treatment of Melanoma Patients in the Northeastern United States. *Ann Surg Oncol*. Published online 2021. doi:10.1245/S10434-021-11086-8
5. Bonadio RC, Messias AP, Moreira OA, et al. Impact of the COVID-19 pandemic on breast and cervical cancer stage at diagnosis in Brazil. *Ecancermedicalscience*. 2021;15. doi:10.3332/ECANCER.2021.1299
6. Caldarella C, Cocciolillo F, Taralli S, et al. The impact of the COVID-19 pandemic on oncological disease extent at FDG PET/CT staging: the ONCOVIPET study. *Eur J Nucl Med Mol Imaging*. Published online 2021. doi:10.1007/S00259-021-05629-0
7. Kuzuu K, Misawa N, Ashikari K, et al. Gastrointestinal Cancer Stage at Diagnosis before and during the COVID-19 Pandemic in Japan. *JAMA Netw Open*. Published online 2021. doi:10.1001/JAMANETWORKOPEN.2021.26334
8. Ruiz-Medina S, Gil S, Jimenez B, et al. Significant decrease in annual cancer diagnoses in Spain during the COVID-19 pandemic: A real-data study. *Cancers (Basel)*. 2021;13(13). doi:10.3390/CANCERS13133215
9. Lucidi D, Valerini S, Federici G, Miglio M, Cantaffa C, Alicandri-Ciuffelli M. Head and Neck Cancer During COVID-19 Pandemic: Was there a Diagnostic Delay? *Indian Journal of Otolaryngology and Head and Neck Surgery*. Published online 2022. doi:10.1007/S12070-021-03050-5
10. Dauti Işıklar A, Deniz C, Soyder A, GÜldoğan N, Yılmaz E, Başaran G. How Do Breast Cancer Patients Present Following COVID-19 Early Peak in a Breast Cancer Center in Turkey? *Eur J Breast Health*. 2021;17(3):253-257. doi:10.4274/EJBH.GALENOS.2021.6161
11. Nossiter J, Morris M, Parry MG, et al. Impact of the COVID-19 pandemic on the diagnosis and treatment of men with prostate cancer. *BJU Int*. 2022;130(2):262-270. doi:10.1111/bju.15699
12. Cai M, Wang GG, Wu Y, Wang Z, Wang GG, Tao K. Study of the gastrointestinal tumor progression during the COVID-19 epidemic in Wuhan. *British Journal of Surgery*. 2020;107(11):e502-e503. doi:10.1002/BJS.11965

13. Hawrot K, Shulman LN, Bleiweiss IJ, et al. Time to Treatment Initiation for Breast Cancer During the 2020 COVID-19 Pandemic. *JCO Oncol Pract*. 2021;17(9):534-540. doi:10.1200/op.20.00807
14. Vanni G, Pellicciaro M, Materazzo M, et al. Advanced stages and increased need for adjuvant treatments in breast cancer patients: The effect of the one-year covid-19 pandemic. *Anticancer Res*. 2021;41(5):2689-2696. doi:10.21873/ANTICANRES.15050
15. Kuusk T, Cullen D, Neves JB, et al. Impact of the first surge of the COVID-19 pandemic on a tertiary referral centre for kidney cancer. *BJU Int*. 2021;128(6):752-758. doi:10.1111/bju.15441
16. Pepe P, Pepe L, Pennisi M, Fraggetta F. Prostate cancer diagnosis and management during one year of the COVID-19 pandemic. *Anticancer Res*. 2021;41(6):3127-3130. doi:10.21873/anticanres.15097
17. Brito M, Laranjo A, Sabino J, Oliveira C, Mocanu I, Fonseca J. Digestive Oncology in the COVID-19 Pandemic Era. *GE Port J Gastroenterol*. 2021;579(5):1-8. doi:10.1159/000514784
18. Purushotham A, Roberts G, Haire K, et al. The impact of national non-pharmaceutical interventions ('lockdowns') on the presentation of cancer patients. *Ecancermedicalscience*. 2021;15. doi:10.3332/ECANCER.2021.1180
19. Riju J, Tirkey AJ, Mathew M, et al. Analysis of Early Impact of COVID-19 on Presentation and Management of Oral Cancers – an Experience from a Tertiary Care Hospital in South India. *Indian J Surg Oncol*. 2021;12:242-249. doi:10.1007/s13193-021-01302-y
20. Heimes D, Müller LK, Schellin A, et al. Consequences of the COVID-19 pandemic and governmental containment policies on the detection and therapy of oral malignant lesions— a retrospective, multicenter cohort study from germany. *Cancers (Basel)*. 2021;13(12). doi:10.3390/cancers13122892
21. Morais S, Antunes L, Rodrigues J, Fontes F, Bento MJ, Lunet N. The impact of the COVID-19 pandemic on the short-term survival of patients with cancer in Northern Portugal. *Int J Cancer*. 2021;149(2):287-296.
22. Vanni G, Tazzioli G, Pellicciaro M, et al. Delay in breast cancer treatments during the first COVID-19 lockdown. a multicentric analysis of 432 patients. *Anticancer Res*. 2020;40(12):7119-7125. doi:10.21873/anticanres.14741
23. Stevens MN, Patro A, Rahman B, et al. Impact of COVID-19 on presentation, staging, and treatment of head and neck mucosal squamous cell carcinoma. *American Journal of Otolaryngology - Head and Neck Medicine and Surgery*. 2022;43(1). doi:10.1016/J.AMJOTO.2021.103263
24. Kasymjanova G, Anwar A, Cohen V, et al. The impact of COVID-19 on the diagnosis and treatment of lung cancer at a canadian academic center: A retrospective chart review. *Current Oncology*. 2021;28(6):4247-4255. doi:10.3390/CURRONCOL28060360
25. Murri D, Botti C, Bassano E, Fornaciari M, Crocetta FM, Ghidini A. Reduction in healthcare services during the COVID-19 pandemic: Patient screening based on symptoms is an effective strategy for avoiding delayed laryngeal cancer diagnosis. *American Journal of*

*Otolaryngology - Head and Neck Medicine and Surgery.* 2021;42(6). doi:10.1016/J.AMJOTO.2021.103162

26. Goenka L, Anandaradje A, Nakka T, et al. The “collateral damage” of the war on COVID-19: impact of the pandemic on the care of epithelial ovarian cancer. *Medical Oncology.* 2021;38(11). doi:10.1007/s12032-021-01588-6

27. Guven DC, Sahin TK, Yildirim HC, et al. Newly diagnosed cancer and the COVID-19 pandemic: tumour stage migration and higher early mortality. *BMJ Support Palliat Care.* Published online October 28, 2021:bmjspcare-2021-003301. doi:10.1136/BMJSPCARE-2021-003301

28. Bertolaccini L, Ciani O, Prisciandaro E, Sedda G, Spaggiari L. Lung cancer stage distribution from before COVID-19 through 18 months of the pandemic: the experience of a large-volume oncological referral centre. *European Journal of Surgical Oncology.* Published online October 2021. doi:10.1016/J.EJSO.2021.09.024

29. Oderda M, Soria F, Rosi F, et al. COVID-19 pandemic impact on uro-oncological disease outcomes at an Italian tertiary referral center. *World J Urol.* Published online 2021. doi:10.1007/S00345-021-03842-Y

30. Ikemura M, Tomishima K, Ushio M, et al. Impact of the coronavirus disease-2019 pandemic on pancreaticobiliary disease detection and treatment. *J Clin Med.* 2021;10(18). doi:10.3390/JCM10184177

31. Zhang Y, Li J, Li ZK, et al. Impact of Coronavirus Disease 2019 on Clinical Characteristics in Patients With Lung Cancer: A Large Single-Centre Retrospective Study. *Front Oncol.* 2021;11. doi:10.3389/FONC.2021.693002

32. Zhang D, Fu Y, Zhou L, et al. Thyroid surgery during coronavirus-19 pandemic phases I, II and III: lessons learned in China, South Korea, Iran and Italy. *J Endocrinol Invest.* 2021;44(5):1065-1073. doi:10.1007/S40618-020-01407-1

33. Borsky K, Shah K, Cunnick G, Tsang-Wright F. Pattern of breast cancer presentation during the COVID-19 pandemic: results from a cohort study in the UK. *Future Oncology.* 2022;18(4):437-443. doi:10.2217/FON-2021-0970

34. Wai KC, Xu MJ, Lee RH, et al. Head and neck surgery during the coronavirus-19 pandemic: The University of California San Francisco experience. *Head Neck.* 2021;43(2):622-629. doi:10.1002/HED.26514

35. Chou CP, Lin HS. Delayed breast cancer detection in an asian country (Taiwan) with low covid-19 incidence. *Cancer Manag Res.* 2021;13:5899-5906. doi:10.2147/CMAR.S314282

36. Toss A, Isca C, Venturelli M, et al. Two-month stop in mammographic screening significantly impacts on breast cancer stage at diagnosis and upfront treatment in the COVID era. *ESMO Open.* 2021;6(2).

37. Meerwein CM, Stadler TM, Balermipas P, Soyka MB, Holzmann D. Diagnostic pathway and stage migration of sinonasal malignancies in the era of the COVID-19 pandemic. *Laryngoscope Investig Otolaryngol.* 2021;6(5):904-910. doi:10.1002/LIO2.640

38. Eijkelboom AH, de Munck L, Vrancken Peeters MJTFD, et al. Impact of the COVID-19 pandemic on diagnosis, stage, and initial treatment of breast cancer in the Netherlands: a population-based study. *J Hematol Oncol*. 2021;14(1).
39. İlgün AS, Özmen V. The Impact of the COVID-19 Pandemic on Breast Cancer Patients. *Eur J Breast Health*. 2022;18(1):85-90. doi:10.4274/EJBH.GALENOS.2021.2021-11-5
40. Miyawaki Y, Sato H, Lee S, et al. Impact of the coronavirus disease 2019 pandemic on first-visit patients with oesophageal cancer in the first infection wave in Saitama prefecture near Tokyo: a single-centre retrospective study. *Jpn J Clin Oncol*. Published online January 26, 2022. doi:10.1093/JJCO/HYAC002
41. Szewczyk M, Pazdrowski J, Golusiński P, Pazdrowski P, Więckowska B, Golusiński W. The impact of the COVID-19 pandemic on the management of head and neck cancer patients at a tertiary care institution in Poland. *Współczesna Onkologia*. 2021;25(4):264-269. doi:10.5114/WO.2021.111310
42. Bogani G, Scambia G, Cimmino C, et al. Characteristics and patterns of care of endometrial cancer before and during COVID-19 pandemic. *J Gynecol Oncol*. 2022;33(1):e10. doi:10.3802/JGO.2022.33.E10
43. Choi JY, Park IJ, Lee HG, et al. Impact of the COVID-19 pandemic on surgical treatment patterns for colorectal cancer in a tertiary medical facility in Korea. *Cancers (Basel)*. 2021;13(9). doi:10.3390/CANCERS13092221
44. Dolan DP, Swanson SJ, Lee DN, et al. Esophagectomy for Esophageal Cancer Performed During the Early Phase of the COVID-19 Pandemic. *Semin Thorac Cardiovasc Surg*. Published online 2021.
45. Kempf E, Priou S, Lamé G, et al. Impact of two waves of Sars-Cov2 outbreak on the number, clinical presentation, care trajectories and survival of patients newly referred for a colorectal cancer: A French multicentric cohort study from a large group of university hospitals. *Int J Cancer*. Published online 2022. doi:10.1002/IJC.33928
46. Kang YJ, Baek JM, Kim YS, et al. Impact of the COVID-19 Pandemic on the Diagnosis and Surgery of Breast Cancer: A Multi-Institutional Study. *J Breast Cancer*. 2021;24(6):491-503. doi:10.4048/JBC.2021.24.E55
47. Schoonbeek RC, de Jel DVC, van Dijk BAC, et al. Fewer head and neck cancer diagnoses and faster treatment initiation during COVID-19 in 2020: A nationwide population-based analysis: Impact of COVID-19 on head and neck cancer. *Radiotherapy and Oncology*. 2022;167:42-48. doi:10.1016/J.RADONC.2021.12.005
48. Davies JM, Spencer A, Macdonald S, et al. Cervical cancer and COVID—an assessment of the initial effect of the pandemic and subsequent projection of impact for women in England: A cohort study. *BJOG*. 2022;129(7):1133-1139. doi:10.1111/1471-0528.17098
49. Elibol E, Koçak Ö, Sancak M, Arslan B, Gül F, Babademez MA. The effect of COVID-19 pandemic on laryngeal cancer in a tertiary referral center. *European Archives of Oto-Rhino-Laryngology*. Published online 2022. doi:10.1007/S00405-022-07268-Z

50. Tang A, Neeman E, Vuong B, et al. Care in the time of COVID-19: impact on the diagnosis and treatment of breast cancer in a large, integrated health care system. *Breast Cancer Res Treat*. Published online 2022. doi:10.1007/S10549-021-06468-1
51. Park JY, Lee YJ, Kim T, et al. Collateral effects of the coronavirus disease 2019 pandemic on lung cancer diagnosis in Korea. *BMC Cancer*. 2020;20(1). doi:10.1186/S12885-020-07544-3
52. Shinkwin M, Silva L, Vogel I, et al. COVID-19 and the emergency presentation of colorectal cancer. *Colorectal Disease*. 2021;23(8):2014-2019.
53. Thompson JA, Lubek JE, Amin N, et al. Impact of the Novel Coronavirus 2019 (COVID-19) Pandemic on Head and Neck Cancer Care. *Otolaryngology - Head and Neck Surgery (United States)*. 2022;166(1):93-100. doi:10.1177/01945998211004544
54. Lee T, Cheng DZ, Foo FJ, et al. Did the COVID-19 lockdown result in a delay of colorectal cancer presentation and outcomes? A single centre review. *Langenbecks Arch Surg*. Published online January 26, 2022. doi:10.1007/S00423-022-02448-1
55. Simão D, Sardinha M, Reis AF, Spencer AS, Luz R, Oliveira S. What Has Changed During the COVID-19 Pandemic? - The Effect on an Academic Breast Department in Portugal. *Eur J Breast Health*. 2022;18(1):74-78. doi:10.4274/EJBH.GALENOS.2021.2021-11-1
56. Kiong KL, Diaz EMEM, Gross ND, Diaz EMEM, Hanna EY. The impact of COVID-19 on head and neck cancer diagnosis and disease extent. *Head Neck*. 2021;43(6):1890-1897.
57. Linck PA, Garnier C, Depetiteville MP, et al. Impact of the COVID-19 lockdown in France on the diagnosis and staging of breast cancers in a tertiary cancer centre. *Eur Radiol*. Published online 2021. doi:10.1007/S00330-021-08264-3
58. Romics L, Doughty J, Stallard S, et al. A prospective cohort study of the safety of breast cancer surgery during COVID-19 pandemic in the West of Scotland. *Breast*. 2021;55:1-6. doi:10.1016/j.breast.2020.11.015

**Table S2. Study quality assessment(124)**

	Q1	Q2	Q3	Q4	Q5	Q6	Q7	Q8	Q9	Q10	Q11	Q12	Q13	Q14
Kaltofen(125)	N	Y	NR	Y	N	N	UK	NA	Y	NA	Y	N	UK	N
Knoll(126)	Y	Y	NR	Y	N	N	UK	NA	Y	NA	Y	N	UK	N
Lim(127)	Y	Y	NR	Y	N	N	UK	NA	Y	NA	Y	N	UK	N
Davis(128)	Y	Y	NR	Y	N	N	UK	NA	Y	NA	Y	N	UK	N
Bonadio(129)	Y	Y	NR	Y	N	N	UK	NA	Y	NA	Y	N	UK	N
Caldarella(130)	Y	Y	NR	Y	N	N	UK	NA	Y	NA	Y	N	UK	N
Kuzuu(131)	Y	Y	Y	Y	N	N	UK	NA	Y	NA	Y	N	UK	N
Ruiz-Medina(132)	Y	Y	NR	Y	N	N	UK	NA	Y	NA	Y	N	UK	N
Lucidi(133)	Y	Y	NR	Y	N	N	UK	NA	Y	NA	Y	N	UK	N
Işıklar(134)	Y	Y	NR	N	N	N	UK	NA	Y	NA	Y	N	UK	N
Nossiter(135)	Y	Y	Y	Y	N	N	UK	NA	Y	NA	Y	N	UK	N
Cai(136)	Y	Y	Y	Y	N	N	UK	NA	Y	NA	Y	N	UK	N
Hawrot(137)	Y	Y	Y	N	N	N	UK	NA	Y	NA	Y	N	UK	N
Vanni(85)	Y	Y	NR	Y	N	N	UK	NA	Y	NA	Y	N	UK	N
Kuusk(138)	N	N	NR	Y	N	N	UK	NA	Y	NA	Y	N	UK	N
Pepe(139)	N	N	NR	Y	N	N	UK	NA	Y	NA	Y	N	UK	N
Brito(140)	Y	Y	NR	Y	N	N	UK	NA	Y	NA	N	N	UK	N
Purushotham(141)	Y	Y	NR	Y	N	N	UK	NA	Y	NA	Y	N	UK	N
Riju(142)	N	Y	NR	Y	N	N	UK	NA	Y	NA	Y	N	UK	N
Heimes(143)	N	Y	NR	Y	N	N	UK	NA	Y	NA	Y	N	UK	N
Morais(144)	Y	Y	Y	Y	N	N	UK	NA	Y	NA	Y	N	UK	N
Vanni(86)	Y	Y	NR	Y	N	N	UK	NA	Y	NA	N	N	UK	N
Stevens(145)	Y	Y	Y	Y	N	N	UK	NA	Y	NA	N	N	UK	N
Kasymjanova(146)	Y	Y	NR	Y	N	N	UK	NA	Y	NA	Y	N	UK	N
Murri(147)	Y	Y	NR	Y	N	N	UK	NA	Y	NA	Y	N	UK	N
Goenka(148)	N	Y	NR	N	N	N	UK	NA	Y	NA	Y	N	UK	N
Guven (149)	Y	Y	NR	Y	N	N	UK	NA	Y	NA	Y	N	UK	N
Bertolaccini(150)	Y	N	NR	NR	N	N	UK	NA	Y	NA	Y	N	UK	N
Oderda(151)	Y	Y	NR	Y	N	N	UK	NA	Y	NA	Y	N	UK	N
Ikemura(152)	N	N	NR	NR	N	N	UK	NA	Y	NA	CD	N	UK	N
Zhang(153)	Y	Y	NR	Y	N	N	UK	NA	Y	NA	Y	N	UK	N
Zhang(154)	Y	Y	NR	Y	N	N	UK	NA	Y	NA	Y	N	UK	N
Borsky(155)	Y	Y	NR	Y	N	N	UK	NA	Y	NA	Y	N	UK	N
Wai(156)	Y	Y	NR	Y	N	N	UK	NA	Y	NA	Y	N	UK	N
Chou(157)	Y	Y	NR	Y	N	N	UK	NA	Y	NA	CD	N	UK	N
Toss(158)	Y	Y	NR	Y	N	N	UK	NA	Y	NA	Y	N	UK	N
Meerwein(159)	Y	Y	NR	Y	N	N	UK	NA	Y	NA	Y	N	UK	Y
Eijkelboom(84)	Y	Y	Y	Y	N	N	UK	NA	Y	NA	Y	N	UK	N
İlgün(160)	Y	Y	NR	Y	N	N	UK	NA	Y	NA	Y	N	UK	N

	Q1	Q2	Q3	Q4	Q5	Q6	Q7	Q8	Q9	Q10	Q11	Q12	Q13	Q14
Miyawaki(161)	Y	Y	NR	Y	N	N	UK	NA	Y	NA	Y	N	UK	N
Szewczyk(162)	Y	Y	NR	Y	N	N	UK	NA	Y	NA	Y	N	UK	N
Bogani(163)	Y	Y	NR	Y	N	N	UK	NA	Y	NA	Y	N	UK	N
Choi(164)	Y	Y	NR	Y	N	N	UK	NA	Y	NA	Y	N	UK	N
Dolan(165)	Y	Y	NR	Y	N	N	UK	NA	Y	NA	Y	N	UK	N
Kempf(166)	Y	Y	NR	Y	N	N	UK	NA	Y	NA	Y	N	UK	N
Kang(167)	Y	Y	NR	Y	N	N	UK	NA	Y	NA	Y	N	UK	N
Schoonbeek(168)	Y	Y	NR	Y	N	N	UK	NA	Y	NA	Y	N	UK	N
Davies(169)	Y	Y	NR	Y	N	N	UK	NA	Y	NA	Y	N	UK	N
Elibol(170)	Y	Y	NR	Y	N	N	UK	NA	Y	NA	Y	N	UK	N
Tang(171)	Y	Y	NR	Y	N	N	UK	NA	Y	NA	Y	N	UK	N
Park(172)	Y	Y	NR	Y	N	N	UK	NA	Y	NA	Y	N	UK	N
Shinkwin(173)	Y	Y	NR	Y	N	N	UK	NA	Y	NA	Y	N	UK	N
Thompson(174)	Y	Y	NR	Y	N	N	UK	NA	Y	NA	Y	N	UK	N
Lee(175)	Y	Y	NR	Y	N	N	UK	NA	Y	NA	Y	N	UK	N
Simão(176)	Y	Y	NR	Y	N	N	UK	NA	Y	NA	Y	N	UK	N
Kiong(177)	Y	Y	NR	Y	N	N	UK	NA	Y	NA	Y	N	UK	N
Linck(178)	Y	Y	NR	Y	N	N	UK	NA	Y	NA	Y	N	UK	N
Romics(179)	Y	Y	NR	Y	N	N	UK	NA	Y	NA	N	N	UK	N

**Abbreviations:** Y = Yes, N = No, UK = Unknown NA= Not Applicable NR= Not Reported CD= Can not Determined

**Questions:**

1. Was the research question or objective in this paper clearly stated?
2. Was the study population clearly specified and defined?
3. Was the participation rate of eligible people at least 50%?
4. Were all the subjects selected or recruited from the same or similar populations (including the same time period)? Were inclusion and exclusion criteria for being in the study prespecified and applied uniformly to all participants?
5. Was a sample size justification, power description, or variance and effect estimates provided?
6. For the analyses in this paper, were the exposure(s) of interest measured prior to the outcome(s) being measured?
7. Was the timeframe sufficient so that one could reasonably expect to see an association between exposure and outcome if it existed?
8. For exposures that can vary in amount or level, did the study examine different levels of the exposure as related to the outcome (e.g., categories of exposure, or exposure measured as continuous variable)?



9. Were the exposure measures (independent variables) clearly defined, valid, reliable, and implemented consistently across all study participants?
10. Was the exposure(s) assessed more than once over time?
11. Were the outcome measures (dependent variables) clearly defined, valid, reliable, and implemented consistently across all study participants?
12. Were the outcome assessors blinded to the exposure status of participants?
13. Was loss to follow-up after baseline 20% or less?
14. Were key potential confounding variables measured and adjusted statistically for their impact on the relationship between exposure(s) and outcome(s)

Smith J, Petrovic P, Rose M, et al. Placeholder Text: A Study. *Citation Styles*. 2021;3.  
doi:10.10/X

**Table S3: Synthesis of first national lockdowns and cancer screening disruptions**

Country	Date of First National Lockdown	Cancer Screening Disruptions
Italy	09/03/2020 – 03/05/2020(13)	From March to May 2020(13)
Netherlands	from 15 March until early June 2020(14)	From March, 12, 2020 to mid May 2020(15)
Spain	14/03/2020 - 09/05/2020(16,17)	From 12/03/2020 to mid May 2020(18,19)
Turkey	29/04/2021 – 14/05/2021(20). No national lockdown in 2020.	From March 2020 to June, 1st 2020 (21)
USA	<p>Main lockdowns:</p> <ul style="list-style-type: none"> <li>• California: 19/03/2020 – 15/06/2021(22)</li> <li>• Connecticut: 23/03/2020 – 22/04/2020(23,24)</li> <li>• Illinois: 21/03/2020 – 30/05/2020(25)</li> <li>• Kansas: 24/03/2020 – 19/04/2020(26)</li> <li>• Massachusetts: 24/03/2020 – 04/05/2020(27)</li> <li>• Michigan: 24/03/2020 – 13/04/2020(28)</li> <li>• New York: 22/03/2020 – 13/06/2020(29)</li> <li>• Oregon: 24/03/2020 – 15/05/2020(30)</li> <li>• Wisconsin: 24/03/2020 – 13/05/2020(31)</li> </ul>	Mid March to Mid July 2020(32)
Taiwan	No national lockdown(33)	No cancer screenings suspension(34)
Switzerland	17/03/2020 – 27/04/2020(35)	From mid March 2020 to 6 weeks later(36)
Germany	22/03/2020 – 20/04/2020(37)	From late March to late April 2020(38)
Portugal	18/03/2020 – 02/05/2020(39)	From mid March to May 2020(39)
China	<p>Main provinces(40):</p> <ul style="list-style-type: none"> <li>• Hubei: 23/01/2020 - 25/03/2020</li> <li>• Zhejiang: 02/02/2020 – 20/02/2020</li> <li>• Xinjiang: 18/07/2020 – 26/08/2020</li> <li>• Hebei: 07/01/2021 – 31/01/2021</li> <li>• Shaanxi: 22/12/2021 – 16/01/2022</li> <li>• Henan: 10/01/2022 – 03/02/2022</li> <li>• Guangdong: 14/03/2022 – 21/03/2022</li> <li>• Shanghai: 01/04/2022 – 01/06/2022</li> </ul>	No clear national datas
France	17/03/2020 – 11/05/2020(41)	From mid March to 15/06/2020(42)
Canada	<p>Main provinces:</p> <ul style="list-style-type: none"> <li>• Ontario: 17/03/2020 – 14/05/2020(43)</li> </ul>	23/03/2020 – 26/05/2020(24)

	<ul style="list-style-type: none"> <li>• British Columbia: 18/03/2020 – 18/05/2020(44)</li> <li>• Quebec: 18/03/2020 – 05/04/2020(45)</li> </ul>	
United Kingdom	23/03/2020 – 10/05/2020(46)	Between March and April 2020(47)
South Korea	No national lockdown(48)	No cancer screening suspension(49)
Japan	No national lockdown(50)	From April 7 to May 25 2020(51)
Brazil	No national lockdown(52,53)	No population-based cancer screening programs in Brazil(53)
Singapore	07/04/2020 – 01/06/2020(54,55)	07/04/2020 – 01/06/2020(56)
Poland	13/03/2023-19/04/2020(57,58)	April-May 2020(59)
India	25/03/2020-08/06/2020(60,61)	During 2020 Lockdown(62)

## Appendix S1. Pubmed and EMBASE search equations

Adapted from PubMed's 'Cancer filter', discontinued in 2019 <sup>1</sup>

### #1

neoplasms OR American Cancer Society OR angiogenesis inducing agents OR antibodies, neoplasm OR antigens, neoplasm OR antineoplastic agents OR antineoplastic protocols OR biomarkers, tumor OR biopsy OR biopsy OR bone marrow purging OR bone marrow transplantation OR cancer care facilities OR cancer vaccines OR carcinogenicity tests OR carcinogens OR chemoembolization, therapeutic OR clonal evolution OR clonal evolution OR colonography, computed tomographic OR colonoscopy OR colposcopy OR combined modality therapy OR cryosurgery OR cytapheresis OR dna, neoplasm OR drug resistance, neoplasm OR drug screening assays, antitumor OR early detection of cancer OR gene expression regulation, neoplastic OR genes, neoplasm OR graft vs tumor effect OR hematopoietic stem cell transplantation OR hematopoietic stem cell mobilization OR immunotherapy, adoptive OR lymph node excision OR tumor-infiltrating OR mammography OR mastectomy OR medical oncology OR metastasectomy OR mohs surgery OR neoplasm grading OR neoplasm proteins OR neoplasm staging OR neoplasm transplantation OR neoplastic processes OR neoplastic stem cells OR oncogene fusion OR oncogenic viruses OR oncology nursing OR oncology service, hospital OR oncolytic viruses OR papanicolaou test OR papillomavirus vaccines OR peripheral blood stem cell transplantation OR polyomavirus OR radiotherapy OR radiotherapy planning, computer assisted OR rna, neoplasm OR second-look surgery OR SEER program OR stem cell transplantation OR transplantation conditioning OR tumor cells, cultured OR tumor escape OR tumor lysis syndrome OR tumor necrosis factors OR receptors, tumor necrosis factor OR tumor necrosis factor receptor-associated peptides and proteins OR ultrasonography, mammary OR AACR OR AJCC OR (ASCO NOT fungi) OR IARC OR "National Cancer Institute (U.S.)" OR UICC OR aCML OR AGCUS OR AILD OR AML OR ANLL OR ASCUS OR ATLL OR BRCA OR BRCA1 OR BRCA2 OR CIN OR CLL OR CMML OR CMPD OR ECCL OR EGIST OR FMTC OR GLNH OR HNPCC OR HNSCC OR HPV OR HSIL OR ICD O OR JCML OR JMML OR LGLL OR MGUS OR MLH1 OR MPD OR MSH2 OR NSCLC OR RAEB OR RCMD OR SCLC OR VOD OR 5q syndrome OR BCR ABL OR c erbB 2 OR c erbB2 OR carney complex OR cone biopsy OR denys drash OR estrogen receptor negative OR estrogen receptor positive OR li fraumeni OR meigs syndrome OR molar pregnancy OR peutz jehgers OR sentinel lymph node OR struma ovarii OR sturge weber OR zollinger ellison OR (aberrant AND crypt AND foci) OR ((anti-n-methyl-d-aspartate OR anti-nmda) AND encephalitis) OR (barrett AND

---

<sup>1</sup> [https://www.nlm.nih.gov/bsd/pubmed\\_subsets/cancer\\_strategy.html](https://www.nlm.nih.gov/bsd/pubmed_subsets/cancer_strategy.html), consulted on 24 May 2023

esophagus) OR (gestational AND trophoblastic) OR (microsatellite AND instability) OR (paget AND (breast OR nipple )) OR (polycythemia AND vera) OR (radiation AND therapy) OR (WAGR AND syndrome) OR (pap AND (smear OR smears )) OR cervical smear OR cervical smears OR pap test OR pap tests OR (PSA AND prostate) OR PSA test OR PSA testing OR (prostate AND specific AND antigen ) OR acanthoma OR acanthomas OR acrochordon OR acrochordons OR acrospiroma OR acrospiromas OR adamantinoma OR adamantinomas OR adenoacanthoma OR adenoacanthomas OR adenoameloblastoma OR adenoameloblastomas OR adenocanthoma OR adenocanthomas OR adenocarcinoma OR adenocarcinomas OR adenofibroma OR adenofibromas OR adenolipoma OR adenolipomas OR adenolymphoma OR adenolymphomas OR adenoma OR adenomas OR adenomatosis OR adenomatous OR adenomyoepithelioma OR adenomyoepitheliomas OR adenomyoma OR adenomyomas OR adenosarcoma OR adenosarcomas OR adenosis OR aesthesioneuroblastoma OR aesthesioneuroblastomas OR ameloblastoma OR ameloblastomas OR amyloidoses OR anaplasia OR androblastoma OR androblastomas OR angioblastoma OR angioblastomas OR angioendothelioma OR angioendotheliomas OR angioendotheliomatosis OR angiofibroma OR angiofibromas OR angiofibrosarcoma OR angiogenesis factor OR angiokeratoma OR angiokeratomas OR angioleiomyoma OR angioleiomyomas OR angioliipoma OR angioliipomas OR angioma OR angiomas OR angiomatosis OR angiomyolipoma OR angiomyolipomas OR angiomyoma OR angiomyomas OR angiomyxoma OR angiomyxomas OR angioreticuloma OR angioreticulomas OR angiosarcoma OR angiosarcomas OR anticancer OR anticarcinogenesis OR anticarcinogenic OR antimutagenesis OR antineoplastic OR antioncogene OR antioncogenes OR antitumor OR antitumors OR antitumour OR antitumours OR apudoma OR apudomas OR argentaffinoma OR argentaffinomas OR arrhenoblastoma OR arrhenoblastomas OR astroblastoma OR astroblastomas OR astrocytoma OR astrocytomas OR astroglioma OR astrogliomas OR atypia OR baltoma OR basiloma OR basilomas OR biochemotherapies OR biochemotherapy OR bioradiotherapy OR Birt-Hogg-Dube OR blastoma OR blastomas OR Buschke-Lowenstein OR cachexia OR cancer OR cancerous OR cancers OR carcinogen OR carcinogenesis OR carcinogenic OR carcinogens OR carcinoid OR carcinoma OR carcinomas OR carcinomatosis OR carcinosarcoma OR carcinosarcomas OR cavernoma OR cavernomas OR cementoma OR cementomas OR cerbB2 OR ceruminoma OR ceruminomas OR chemodectoma OR chemodectomas OR chemoimmunoradiotherapy OR chemoimmunotherapies OR chemoimmunotherapy OR chemoprevention OR chemoradiation OR chemoradiotherapies OR chemoradiotherapy OR cherubism OR chloroma OR chloromas OR cholangiocarcinoma OR cholangiocarcinomas OR cholangiohepatoma OR cholangioma OR cholangiomas OR cholangiosarcoma OR cholesteatoma OR cholesteatomas OR chondroblastoma OR chondroblastomas OR chondroma OR chondromas OR chondrosarcoma OR chondrosarcomas OR chordoma OR chordomas OR chorioadenoma OR chorioadenomas OR chorioangioma OR chorioangiomas OR choriocarcinoma OR choriocarcinomas OR chorioepithelioma OR chorioepitheliomas OR chorionepithelioma OR chorionepitheliomas OR choristoma OR choristomas OR chromaffinoma OR chromaffinomas OR cocarcinogenesis OR collagenoma OR collagenomas OR colonoscopies OR coloscopy OR coloscopies OR comedocarcinoma

OR comedocarcinomas OR condyloma OR condylomas OR corticotropinoma OR corticotropinomas OR craniopharyngioma OR craniopharyngiomas OR cylindroma OR cylindromas OR cyst OR cysts OR cystadenocarcinoma OR cystadenocarcinomas OR cystadenofibroma OR cystadenofibromas OR cystadenoma OR cystadenomas OR cystoma OR cystomas OR cystosarcoma OR cystosarcomas OR dentinoma OR dentinomas OR dermatofibroma OR dermatofibromas OR dermatofibrosarcoma OR dermatofibrosarcomas OR dermoid OR desmoid OR desmoplastic OR dictyoma OR dysgerminoma OR dysgerminomas OR dyskeratoma OR dyskeratomas OR dysplasia OR dysplastic OR ectomesenchymoma OR ectomesenchymomas OR elastofibroma OR elastofibromas OR enchondroma OR enchondromas OR enchondromatosis OR endothelioma OR endotheliomas OR ependymblastoma OR ependymblastomas OR ependymoma OR ependymomas OR epidermoid OR epithelioma OR epitheliomas OR erythroplasia OR esthesioneuroblastoma OR esthesioneuroblastomas OR esthesioneuroepithelioma OR esthesioneuroepitheliomas OR exostosis OR fibroadenoma OR fibroadenomas OR fibroadenosarcoma OR fibroadenosis OR fibrochondrosarcoma OR fibroelastoma OR fibroelastomas OR fibroepithelioma OR fibroepitheliomas OR fibrofolliculoma OR fibrofolliculomas OR fibroid OR fibroids OR fibrolipoma OR fibrolipomas OR fibroliposarcoma OR fibroma OR fibromas OR fibromatosis OR fibromyoma OR fibromyomas OR fibromyxolipoma OR fibromyxoma OR fibromyxomas OR fibroodontoma OR fibroodontomas OR fibrosarcoma OR fibrosarcomas OR fibrothecoma OR fibrothecomas OR fibroxanthoma OR fibroxanthomas OR fibroxanthosarcoma OR fibroxanthosarcomas OR ganglioblastoma OR ganglioblastomas OR gangliocytoma OR gangliocytomas OR ganglioglioma OR gangliogliomas OR ganglioneuroblastoma OR ganglioneuroblastomas OR ganglioneurofibroma OR ganglioneurofibromas OR ganglioneuroma OR ganglioneuromas OR gastrinoma OR gastrinomas OR germinoma OR germinomas OR glioblastoma OR glioblastomas OR gliofibroma OR gliofibromas OR glioma OR gliomas OR gliomatosis OR glioneuroma OR glioneuromas OR gliosarcoma OR gliosarcomas OR glomangioma OR glomangiomas OR glomangiomatosis OR glomangiomyoma OR glomangiomyomas OR glomangiosarcoma OR glomangiosarcomas OR glucagonoma OR glucagonomas OR gonadoblastoma OR gonadoblastomas OR gonocytoma OR gonocytomas OR granuloma OR granulomas OR granulomatosis OR gynaecomastia OR gynandroblastoma OR gynecomastia OR haemangioblastoma OR haemangioblastomas OR haemangioma OR haemangiomas OR haemangiopericytoma OR haemangiopericytomas OR haemangiosarcoma OR haemangiosarcomas OR hamartoma OR hamartomas OR hemangioblastoma OR hemangioblastomas OR hemangioendothelioma OR hemangioendotheliomas OR hemangioendotheliosarcoma OR hemangioendotheliosarcomas OR hemangioma OR hemangiomas OR hemangiomatosis OR hemangiopericytoma OR hemangiopericytomas OR hemangioperithelioma OR hemangiosarcoma OR hemangiosarcomas OR hepatoblastoma OR hepatoblastomas OR hepatocarcinoma OR hepatocarcinomas OR hepatocholangiocarcinoma OR hepatocholangiocarcinomas OR hepatoma OR hepatomas OR hibernoma OR hibernomas OR hidradenoma OR hidradenomas OR hidrocystoma OR hidrocystomas OR histiocytoma OR histiocytomas OR hodgkin OR hodgkins OR hydatidiform OR hydradenoma OR hydradenomas OR hypernephroma OR hypernephromas OR

immunochemoradiotherapy OR immunochemotherapies OR immunochemotherapy OR immunocytoma OR immunocytoma OR  
 immunoradiotherapy OR insulinomas OR integrative oncology OR kasabach-merritt OR keratoacanthoma OR keratoacanthomas OR keratosis  
 OR leiomyoblastoma OR leiomyoblastomas OR leiomyofibroma OR leiomyofibromas OR leiomyoma OR leiomyomas OR leiomyomatosis OR  
 leiomyosarcoma OR leiomyosarcomas OR lipoadenoma OR lipadenomas OR lipoblastoma OR lipoblastomas OR lipoblastomatosis OR lipoma  
 OR lipomas OR lipomatosis OR liposarcoma OR liposarcomas OR luteinoma OR luteoma OR luteomas OR lymphangioendothelioma OR  
 lymphangioendotheliomas OR lymphangiroleiomyomatosis OR lymphangioma OR lymphangiomas OR lymphangiomatosis OR  
 lymphangiomyoma OR lymphangiomyomas OR lymphangiomyomatosis OR lymphangiosarcoma OR lymphangiosarcomas OR  
 lymphoepithelioma OR lymphoepitheliomas OR macroprolactinoma OR malignancies OR malignancy OR malignant OR maltoma OR maltomas  
 OR mammogram OR mammograms OR masculinoblastoma OR mastocytoma OR mastocytomas OR mcf-7 OR medulloblastoma OR  
 medulloblastomas OR medulloctoma OR medulloctomas OR medulloepithelioma OR medulloepitheliomas OR medullomyoblastoma OR  
 medullomyoblastomas OR melanoacanthoma OR melanoacanthomas OR melanoameloblastoma OR melanocytoma OR melanocytomas OR  
 melanoma OR melanomas OR melanomatosis OR meningioblastoma OR meningioma OR meningiomas OR meningiomatosis OR  
 mesenchymoma OR mesenchymomas OR mesonephroma OR mesonephromas OR mesothelioma OR mesotheliomas OR metaplasia OR  
 metastases OR metastasis OR metastatic OR microcarcinoma OR microcarcinomas OR microglioma OR microgliomas OR micrometastases  
 OR micrometastasis OR mucositis OR myelolipoma OR myelolipomas OR myelosuppression OR myoblastoma OR myoblastomas OR  
 myoepithelioma OR myoepitheliomas OR myofibroblastoma OR myofibroblastomas OR myofibroma OR myofibromas OR myofibromatosis  
 OR myofibrosarcoma OR myofibrosarcomas OR myolipoma OR myolipomas OR myoma OR myomas OR myopericytoma OR myosarcoma OR  
 myosarcomas OR myxofibroma OR myxofibromas OR myxolipoma OR myxolipomas OR myxoliposarcoma OR myxoma OR myxomas OR  
 naevus OR neoplasia OR neoplasia OR neoplasm OR neoplasms OR neoplastic OR nephroblastoma OR nephroblastomas OR neurilemmoma  
 OR neurilemmomas OR neurilemmomatosis OR neurilemoma OR neurilemmas OR neurinoma OR neurinomas OR neuroblastoma OR  
 neuroblastomas OR neurocytoma OR neurocytomas OR neuroepithelioma OR neuroepitheliomas OR neurofibroma OR neurofibromas OR  
 neurofibromatosis OR neurofibrosarcoma OR neurofibrosarcomas OR neurolipocytoma OR neuroma OR neuromas OR neuronevus OR  
 neurothekeoma OR neurothekeomas OR nevus OR nonseminoma OR nonseminomas OR nonseminomatous OR odontoameloblastoma OR  
 odontoma OR oligoastrocytoma OR oligoastrocytomas OR oligodendroglioma OR oligodendrogliomas OR oncocytoma OR oncocytomas OR  
 oncogen OR oncogene OR oncogenes OR oncogenesis OR oncogenic OR oncogens OR oncologic OR oncologist OR oncologists OR oncology  
 OR oncoprotein OR oncoproteins OR opsoclonus-myooclonus OR orchioblastoma OR orchioblastomas OR osteoblastoma OR osteoblastomas  
 OR osteochondroma OR osteochondromas OR osteochondrosarcoma OR osteochondrosarcomas OR osteoclastoma OR osteoclastomas OR

osteofibrosarcoma OR osteoma OR osteomas OR osteosarcoma OR osteosarcomas OR pancreatoblastoma OR pancreatoblastomas OR papilloma OR papillomas OR papillomata OR papillomatosis OR papillomavirus OR papillomaviruses OR parachordoma OR parachordomas OR paraganglioma OR paragangliomas OR paraneoplastic OR perineurioma OR perineuriomas OR pheochromocytoma OR pheochromocytomas OR pheochromoblastoma OR pheochromoblastomas OR pheochromocytoma OR pheochromocytomas OR pilomatricoma OR pilomatricomas OR pilomatrixoma OR pilomatrixomas OR pinealblastoma OR pinealoblastoma OR pinealoblastomas OR pinealoma OR pinealomas OR pineoblastoma OR pineoblastomas OR pineocytoma OR pineocytomas OR plasmacytoma OR plasmacytomas OR pneumoblastoma OR pneumoblastomas OR pneumocytoma OR polyembryoma OR polyembryomas OR polyhistioma OR polyhistiomas OR polyp OR polyposis OR polyps OR porocarcinoma OR porocarcinomas OR poroma OR poromas OR precancer OR precancerous OR premalignant OR preneoplastic OR prolactinoma OR prolactinomas OR protooncogene OR protooncogenes OR pseudotumor OR pseudotumors OR radiochemotherapy OR radioimmunotherapies OR radioimmunotherapy OR reninoma OR reninomas OR reticuloendothelioma OR reticuloendotheliomas OR reticulohistiocytoma OR reticulohistiocytomas OR reticulosis OR retinoblastoma OR retinoblastomas OR rhabdomyoma OR rhabdomyomas OR rhabdomyosarcoma OR rhabdomyosarcomas OR rhabdosarcoma OR rhabdosarcomas OR sarcoma OR sarcomas OR sarcomatosis OR schwannoma OR schwannomas OR schwannomatosis OR seminoma OR seminomas OR seminomatous OR somatostatinoma OR somatostatinomas OR somatotropinoma OR somatotropinomas OR spermatocytoma OR spiradenoma OR spiradenomas OR spongioblastoma OR spongioblastomas OR steatocystoma OR steatocystomas OR subependymoma OR subependymomas OR syringadenoma OR syringadenomas OR syringocystadenoma OR syringocystadenomas OR syringoma OR syringomas OR teratocarcinoma OR teratocarcinomas OR teratoma OR teratomas OR thecoma OR thecomas OR thymolipoma OR thymolipomas OR trichilemmoma OR trichilemmomas OR trichoadenoma OR trichoblastoma OR trichoblastomas OR trichodiscoma OR trichodiscomas OR trichoepithelioma OR trichoepitheliomas OR trichofolliculoma OR trichofolliculomas OR tricholemmoma OR tricholemmomas OR tumor OR tumorigenesis OR tumorigenic OR tumorigenesis OR tumorigenic OR tumors OR tumour OR tumours OR vipoma OR vipomas OR xanthoastrocytoma OR xanthoastrocytomas OR xanthofibroma OR xanthofibromas OR xanthogranuloma OR xanthogranulomas OR xanthoma OR xanthomas OR xanthosarcoma OR xanthosarcomas OR Acta Oncol OR Acta Radiol Oncol Radiat Phys Biol OR Acta Radiol Oncol OR Adv Cancer Res OR Adv Immun Cancer Ther OR Ai Zheng OR Am J Cancer OR Am J Clin Oncol OR Am Soc Clin Oncol Educ Book OR Anal Cell Pathol OR Ann Oncol OR Ann Surg Oncol OR Anti cancer Drugs OR Anticancer Agents Med Chem OR Anticancer Drug Des OR Anticancer Res OR Asia Pac J Clin Oncol OR BMC Cancer OR Baillieres Clin Oncol OR Biochim Biophys Acta OR Blood Cancer J OR Br J Cancer Suppl OR Br J Cancer OR Brain Tumor Pathol OR Breast Cancer Res Treat OR Breast Cancer Res OR Breast Cancer OR Breast J OR Bull Assoc Fr Etud Cancer OR Bull Cancer Radiother OR Bull Cancer OR CA Cancer J Clin OR Can J Oncol OR Can Oncol Nurs J OR Cancer Biochem



Biophys OR Cancer Biol Ther OR Cancer Biomark OR Cancer Biother Radiopharm OR Cancer Biother OR Cancer Bull OR Cancer Causes Control  
 OR Cancer Cell Int OR Cancer Cell OR Cancer Cells OR Cancer Chemother Biol Response Modif OR Cancer Chemother Pharmacol OR Cancer  
 Chemother Rep 2 OR Cancer Chemother Rep 3 OR Cancer Chemother Rep OR Cancer Clin Trials OR Cancer Commun OR "Cancer Commun  
 (Lond)" OR Cancer Control OR Cancer Cytol OR Cancer Cytopathol OR Cancer Detect Prev Suppl OR Cancer Detect Prev OR Cancer Discov OR  
 Cancer Drug Deliv OR Cancer Epidemiol Biomarkers Prev OR Cancer Epidemiol OR Cancer Gene Ther OR Cancer Genet OR Cancer Genet  
 Cytogenet OR Cancer Genomics Proteomics OR Cancer Imaging OR Cancer Immun OR Cancer Immunol Immunother OR Cancer Immunol Res  
 OR Cancer Inform OR Cancer Invest OR Cancer J Sci Am OR Cancer J OR Cancer Lett OR Cancer Med OR Cancer Metastasis Rev OR Cancer  
 Microenviron OR Cancer Nurs OR Cancer Pract OR Cancer Prev Control OR Cancer Prev Res Phila OR Cancer Radiother OR Cancer Res Treat  
 OR Cancer Res OR Cancer Sci OR Cancer Surv OR Cancer Treat Rep OR Cancer Treat Res OR Cancer Treat Res Commun OR Cancer Treat Rev  
 OR Cancer OR Carcinogenesis OR Cell Growth Differ OR Cell Oncol Dordr OR Chin Clin Oncol OR Chin J Cancer OR Chin J Cancer OR Clin Breast  
 Cancer OR Clin Cancer Res OR Clin Colorectal Cancer OR Clin Exp Metastasis OR Clin J Oncol Nurs OR Clin Lymphoma Myeloma Leuk OR Clin  
 Lymphoma OR Clin Oncol R Coll Radiol OR Clin Oncol OR Clin Transl Oncol OR CNS Oncol OR Contemp Oncol OR Crit Rev Oncog OR Crit Rev  
 Oncol Hematol OR Curr Cancer Drug Targets OR Curr Oncol Rep OR Curr Oncol OR Curr Opin Oncol OR Curr Probl Cancer OR Curr Treat Options  
 Oncol OR Dimens Oncol Nurs OR Drug Resist Updat OR Eksp Onkol OR Endocr Relat Cancer OR Eur J Cancer B Oral Oncol OR Eur J Cancer Care  
 Engl OR Eur J Cancer Clin Oncol OR Eur J Cancer Prev OR Eur J Cancer OR Eur J Gynaecol Oncol OR Eur J Surg Oncol OR Front Radiat Ther Oncol  
 OR Future Oncol OR Gan No Rinsho OR Gan To Kagaku Ryoho OR Gastric Cancer OR Gastrointest Cancer Res OR Genes Chromosomes Cancer  
 OR Gulf J Oncolog OR Gynecol Oncol OR Head Neck Oncol OR Hematol Oncol Clin North Am OR Hematol Oncol Stem Cell Ther OR Hematol  
 Oncol OR Hered Cancer Clin Pract OR Horm Cancer OR IARC Monogr Eval Carcinog Risk Chem Hum Suppl OR IARC Monogr Eval Carcinog Risk  
 Chem Hum OR IARC Monogr Eval Carcinog Risk Chem Man OR IARC Monogr Eval Carcinog Risks Hum Suppl OR IARC Monogr Eval Carcinog Risks  
 Hum OR IARC Sci Publ OR Important Adv Oncol OR Indian J Cancer OR Infect Agent Cancer OR Innov Oncol Nurs OR Int Adv Surg Oncol OR Int  
 J Biol Markers OR Int J Cancer Suppl OR Int J Cancer OR Int J Clin Oncol OR Int J Gastrointest Cancer OR Int J Gynecol Cancer OR Int J  
 Hyperthermia OR Int J Oncol OR Int J Radiat Oncol Biol Phys OR Int J Surg Oncol OR Integr Cancer Ther OR Invasion Metastasis OR Invest New  
 Drugs OR J Adolesc Young Adult Oncol OR J Assoc Pediatr Oncol Nurses OR J Cancer Educ OR J Cancer Epidemiol Prev OR J Cancer Res Clin  
 Oncol OR J Cancer Res OR J Cancer Surviv OR J Chemother OR J Clin Oncol OR J Community Support Oncol OR J Dermatol Surg Oncol OR J  
 Egypt Natl Canc Inst OR J Environ Pathol Toxicol Oncol OR J Exp Clin Cancer Res OR J Exp Ther Oncol OR J Geriatr Oncol OR J Gynecol Oncol OR  
 J Hematol Oncol OR J Immunother Emphasis Tumor Immunol OR J Immunother OR J Mammary Gland Biol Neoplasia OR J Med Imaging Radiat  
 Oncol OR J Natl Cancer Inst Monogr OR J Natl Cancer Inst OR J Natl Compr Canc Netw OR J Neurooncol OR J Oncol Manag OR J Oncol Pract

OR J Oncol OR J Pediatr Hematol Oncol OR J Pediatr Oncol Nurs OR J Soc Integr Oncol OR J Support Oncol OR J Surg Oncol Suppl OR J Surg Oncol OR J Thorac Oncol OR Jaarb Kankeronderz Kankerbestrijd Ned OR JAMA Oncol OR JCO Clin Cancer Inform OR Jpn J Cancer Res OR Jpn J Clin Oncol OR Klin Onkol OR Lancet Oncol OR Leuk Lymphoma OR Leuk Res OR Leukemia OR Lung Cancer OR Lutte Cancer OR Magy Onkol OR Med Oncol Tumor Pharmacother OR Med Oncol OR Med Pediatr Oncol Suppl OR Med Pediatr Oncol OR Melanoma Res OR Mol Cancer Res OR Mol Cancer Ther OR Mol Cancer OR Mol Oncol OR Monogr Neoplast Dis Var Sites OR NCI Monogr OR Nat Rev Cancer OR Nat Rev Clin Oncol OR Natl Cancer Inst Monogr OR Natl Cancer Inst Res Rep OR Neoplasia OR Neoplasma OR Neuro oncol OR Nippon Gan Chiryō Gakkai Shi OR Noshuyo Byori OR Nutr Cancer OR ONS Connect OR ONS News OR Oncogene Res OR Oncogene OR Oncol Nurs Forum OR Oncol Rep OR Oncol Res OR Oncol Res Treat OR Oncologist OR Oncology Huntingt OR Oncology OR Oncotarget OR Onkologie OR Open Clin Cancer J OR Oral Oncol OR Papillomavirus Res OR Pathol Oncol Res OR Pediatr Blood Cancer OR Pediatr Hematol Oncol OR Pigment Cell Melanoma Res OR Pract Radiat Oncol OR Princess Takamatsu Symp OR Proc Am Assoc Cancer Res OR Proc Can Cancer Conf OR Proc Natl Cancer Conf OR Prog Clin Cancer OR Prog Exp Tumor Res OR Prog Tumor Res OR Prostate Cancer Prostatic Dis OR Psychooncology OR Radiat Oncol Investig OR Radiat Oncol OR Radiol Oncol OR Radiother Oncol OR Recent Results Cancer Res OR Rep Carcinog Backgr Doc OR Rev Mex Cir Ginecol Cancer OR S Afr Cancer Bull OR Sci Rep Res Inst Tohoku Univ Med OR Sel Cancer Ther OR Semin Cancer Biol OR Semin Oncol Nurs OR Semin Oncol OR Semin Radiat Oncol OR Semin Surg Oncol OR Semin Urol Oncol OR Strahlenther Onkol OR Suppl J Med Oncol Tumor Pharmacother OR Suppl Tumori OR Support Cancer Ther OR Support Care Cancer OR Surg Oncol Clin N Am OR Surg Oncol OR Symp Fundam Cancer Res OR Target Oncol OR Technol Cancer Res Treat OR Thorac Cancer OR Transl Oncol OR Tumor Res OR Tumori OR Tumour Biol OR Urol Oncol OR Vet Comp Oncol OR Vopr Onkol OR World J Surg Oncol OR Z Krebsforsch Klin Onkol Cancer Res Clin Oncol OR Z Krebsforsch OR Zhongguo Fei Ai Za Zhi OR Zhonghua Zhong Liu Za Zhi

**#2**

**Neoplasm Staging[MeSH Terms] OR Neoplasm Metastasis[MeSH Terms] OR (stage[Title/Abstract] OR metasta\*[Title/Abstract] OR pTNM[Title/Abstract] OR TNM[Title/Abstract])**

**#3**

**LitCGeneral[sb]**

**#4**

Address OR Autobiography OR Biography OR Clinical Trial, Veterinary OR Dictionary OR Directory OR Duplicate Publication OR Expression of Concern OR Festschrift OR Historical Article OR Interactive Tutorial OR Interview OR Lecture OR Legal Case OR Legislation OR News OR Newspaper Article OR Observational Study, Veterinary OR Patient Education Handout OR Periodical Index OR Personal Narrative OR Portrait OR Preprint OR Published Erratum OR Randomized Controlled Trial, Veterinary OR Retracted Publication OR Retraction of Publication OR Scientific Integrity Review OR Technical Report OR Video-Audio Media OR Webcast

**#5**

"animals"[mh:noexp]

**((#1 AND #2) AND #3) NOT #4 NOT #5**

## Appendix S2. Inclusion and exclusion criteria for article selection

### Inclusion criteria:

- Studies published between January 2020 and April 2022 in PubMed or Embase
- English language only
- Patients >18 years old only
- Solid tumors only
- New cancer diagnosis
- Articles comparing stages before and after the outbreak of the Sars-Cov-2 pandemic

### Exclusion criteria:

- Abstracts
- Posters
- Letters to the editor
- Guidelines
- Systematic reviews and other types of literature reviews
- Short communications
- Articles unpublished or from grey literature
- Articles with no or insufficient cancer staging information
- Articles focusing only on pre or post Sars-Cov-2 results (e.g., cross-sectional studies of cancer staging during the pandemic)
- Articles that only included metastatic patients

## Appendix S3. List of data elements we extracted from included articles

### 1. Identification of articles:

- First author
- Titles
- PMID

### 2. Method-related items

- Country
- Study type
- Type of data collection (Cancer register, care records, other types)
- Mono or multicentric status
- Type of care center (primary, secondary or tertiary )
- Inclusion criteria
- Cancer type
- Period of interest
- Comparative period
- Notion of cancer screening postponement
- Notion of national lockdown
- Primary outcome
- Secondary outcomes

### 3. Result-related items

- Number of patients included for each period.
- Median or mean age for each period
- % of male patients for each period
- Time between diagnosis and treatment for each period
- Cancer staging for each period

#### **Appendix S4. Classification of primary cancer types**

- Breast cancer
- Colorectal cancer
- Other gastro: Esophageal, gastric, pancreatic, biliary tract, liver.
- Gynecologic cancer: Cervix, endometre, ovaries, vulvar/vagina.
- Genito-urinary: Kidney, bladder
- Other cancer: Head and neck (sinonasal, oral, thyroid), sarcoma, germ cells, CUP, mesothelioma.
- Melanoma
- Prostate
- Lungs

## Impact de la crise COVID 19 sur la présentation clinique initiale des cancers solides nouvellement diagnostiqués : Une revue systématique de la littérature et une méta-analyse.

**Contexte :** Les perturbations de soins causées par la crise COVID 19 ont pu impacter la présentation initiale des cancers solides nouvellement diagnostiqués sur cette période ainsi que leur pronostic. Le but de cette revue systématique de la littérature était de comparer la distribution globale des stades des cancers solides avant et après les premières vagues de la pandémie.

**Méthode :** Une revue systématique de la littérature a été réalisée en suivant les recommandations PRISMA et MOOSE, par deux investigateurs indépendants au travers des publications disponibles sur MEDLINE et EMBASE. Une méta-analyse a été conduite afin de comparer le taux de métastases au diagnostic de cancers solides avant et après les premières vagues de la pandémie. Des analyses en sous-groupes ont été menées par type de cancer, et par localisation géographique de l'étude. L'hétérogénéité entre les études et les différences entre sous-groupes ont été vérifiées par des tests  $I^2$  et  $X^2$ .

**Résultats :** Des 2013 articles extraits par l'équation de recherche, 58 ont été inclus dans l'analyse finale, représentant 109 996 patients. Le taux de présentation métastatique au diagnostic était significativement plus important après les premières vagues de la pandémie ( pooled OR: 1.29 (95% CI, 1.06-1.57),  $I^2$ : 89% (95% CI, 86-91)). Les analyses en sous groupes par type de cancer ont révélé significativement plus de métastases au diagnostic pour les cancers du sein et les cancers gynécologiques (OR: 1.51 (95% CI 1.07-2.12) et OR: 1.51 (95% CI 1.04-2.18) respectivement). Les autres types de cancers ne révélaient pas de modifications significatives. Les analyses en sous groupes par localisation géographique des études montraient significativement plus de métastases au diagnostic en Italie (OR (95% CI) : 1.55 (1.01-2.39)) et en Espagne (OR (95% CI) : 1.14 (1.02-1.29)). Au contraire, moins de métastases au diagnostic ont été notifiées à Taiwan (OR (95% CI) : 0.51 (0.28-0.93)) et au Canada (OR (95%CI) : 0.14 (0.07-0.29)). La répartition des stades I-II VS III-IV et I-II VS III ne montrait quand à elle pas de différence notable par pays ou par type de cancer.

**Conclusion :** Malgré une hétérogénéité importante entre les études, notre méta-analyse a démontré un taux plus important de métastases au diagnostic après la pandémie COVID 19. La mise en place de mesures préventives de distanciation et le report des soins peuvent contribuer à expliquer ce résultats.

### Spécialité :

[\[Médecine Interne et Immunologie Clinique\]](#)

### Mots clés français :

[COVID 19](#), [Système de santé](#), [Détection précoce des cancers](#), [Recherche sur les système de soins](#), [Métastases](#), [Stadification des cancers](#).

### Forme ou Genre :

[fMeSH : Dissertation universitaire](#)

[Rameau : Thèses et écrits académiques](#)